

Introduction

While an estimated 2.1 million people live in displacement sites in Somalia¹, existing information on exact locations and site level vulnerabilities is sparse, and existing assessments have been ad-hoc and unharmonised, resulting in low comparability and verification.

The Detailed Site Assessment (DSA) was triggered in coordination with the Camp Coordination and Camp Management (CCCM) Cluster in order to provide the humanitarian community with up-to-date information on location of internally displaced persons (IDP) sites, the conditions and capacity of the sites and the humanitarian needs of the residents.

Target locations for assessment were selected based on needs identified by the CCCM Cluster

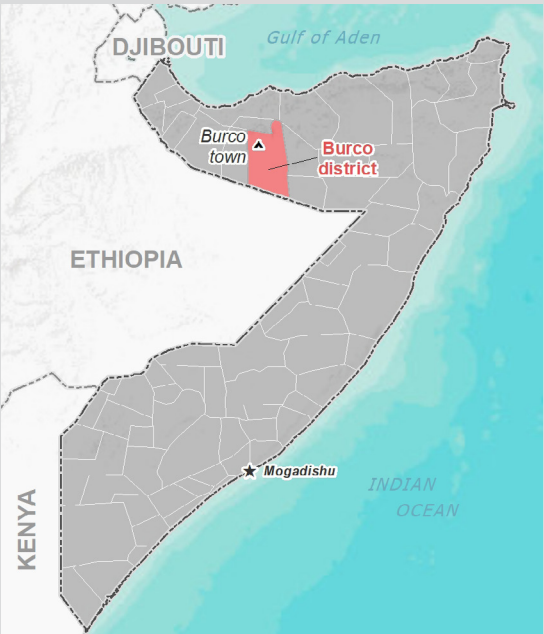
and accessibility for data collection.

A grid pattern approach² was applied during data collection to ensure that all IDP sites in the target area were identified. In each site, two key informant (KI) interviews were conducted: one with the site manager or community leader and one with a women's representative to ensure the perspectives of different groups were captured³. KI responses were aggregated to give one response per question per site.

This factsheet presents a summary of Cali Xuseen Site profile along with the needs and priorities of IDPs residing in the site. As the data is captured through KIs, findings should be considered indicative only.

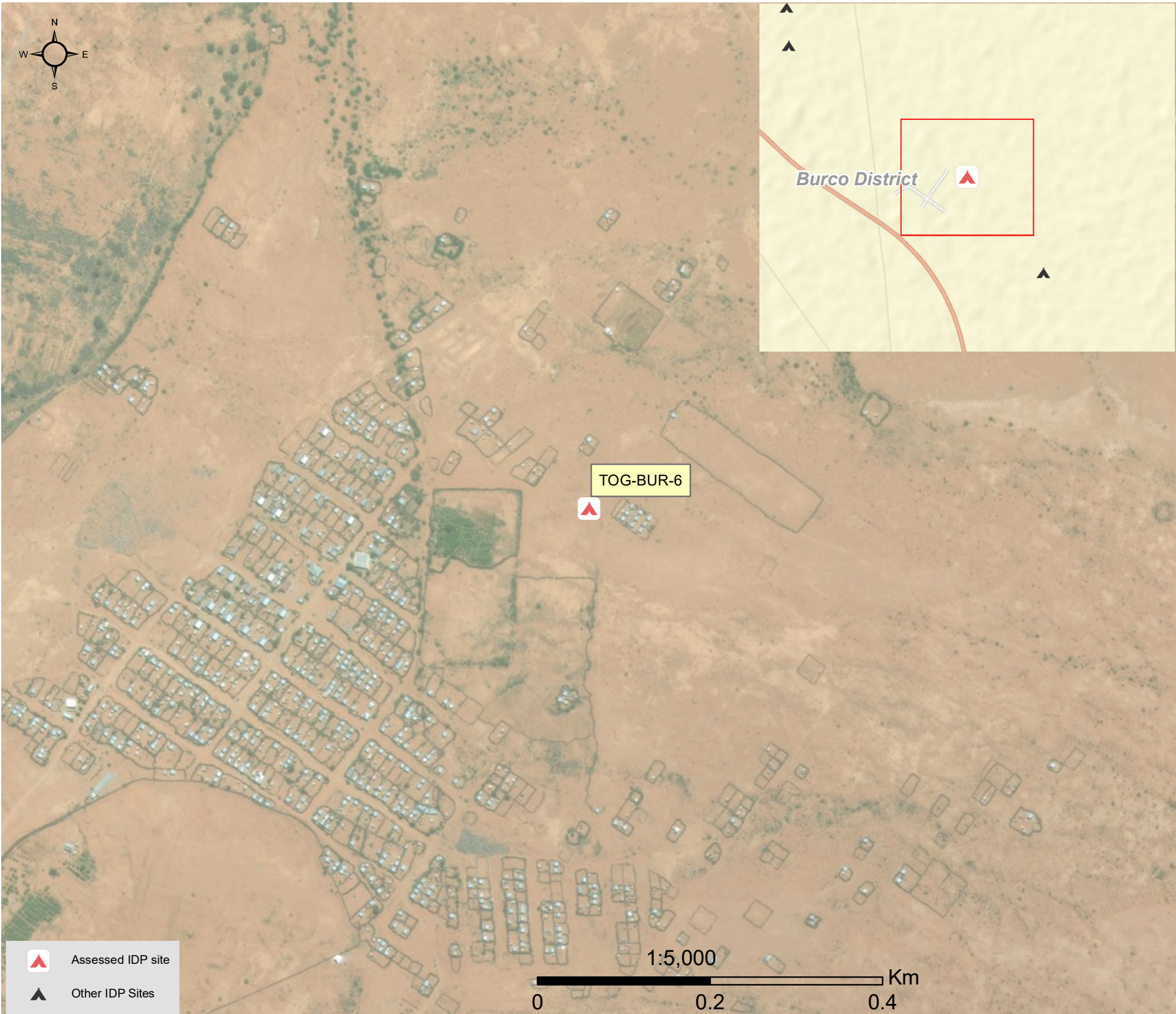
Date assessed: **Nov - 2017**

Location map



Assessed IDP sites in Burco

Coordinates: Lat. 9.565, Long. 45.536



1.United Nations High Commissioner for Refugees (UNHCR): Protection & Return Monitoring Network (PRMN), September 2017

2.For each target location, the area was divided into 1km² grids. Enumerator teams then visited each grid to verify whether an IDP site was present. By visiting all grids, teams were able to determine the total number of sites in each location.

3.Where KI responses were significantly divergent, these were verified with the respective KIs with a higher reliability accorded to the response provided by the site manager or community leader.



Site Information

Settlement type	Spontaneous site
Estimated number of individuals	13800
Estimated number of households	2300
Site capacity reached	No
Responsible management agency	Local authority
Date when most site residents arrived	Aug-16
Site owner	Local authority



Protection

Number of vulnerable households:	
Female-headed households	200
Child-headed households	16
Elderly individuals ⁴	2700
Unaccompanied children	0
Individuals with a physical disability	180
Presence of shared community space	Yes
Presence of separate space for women/girls	Yes
Presence of child friendly space	No
Public lighting in the site	Yes
Type of landownership	Formal
Risk of eviction in next three months	No



WASH

Access to potable water	Yes
Number of latrines in the site:	
Latrines (mixed)	40
Latrines (male)	0
Latrines (female)	0
Access to handwashing facilities	No



Shelter and Non-Food Items (NFI)

Most common shelter types in the site⁵:	
1. Buul	
2. Brick	
3. CGI	
Electricity available in the site	Yes
Access to a NFI market	No
Average walking time to the nearest NFI market	N/A
Perceived safe access to NFI market	N/A



Displacement

Estimated number of households per displacement group:	
IDPs	2300
Host community/ non-displaced	0
IDP households arrived in the past 3 months	500
Most common areas of origin:	
First area of origin	Togdheer
Second area of origin	Woqooyi Galbeed
Third area of origin	N/A



Food Security

Primary source of food	Market purchase
Food distributions	Monthly
Access to a food market	No



Health and Nutrition

Most common health issue(s) reported in the site:	
1. AWD / Cholera	
2. Other	
3. N/A	
Access to healthcare services	No
Average walking time to the nearest health service	N/A
Women give birth in the site	Yes
Access to nutrition services	No
Average walking time to the nearest nutrition service	N/A
Access to nutrition services:	No



Education

Education services available	Yes
Average walking time to the nearest school	15 minutes
Education facilities available to residents in the site⁵:	
1. Primary	
2. Quranic	
3. N/A	



Communication

Three most trusted sources of information⁵:	
1. Religious leader	
2. TV	
3. Radio	
Most commonly spoken language	Somali Standard

4.More than 60 years old.

5.Key informants could select multiple responses.



Introduction

While an estimated 2.1 million people live in displacement sites in Somalia¹, existing information on exact locations and site level vulnerabilities is sparse, and existing assessments have been ad-hoc and unharmonised, resulting in low comparability and verification.

The Detailed Site Assessment (DSA) was triggered in coordination with the Camp Coordination and Camp Management (CCCM) Cluster in order to provide the humanitarian community with up-to-date information on location of internally displaced persons (IDP) sites, the conditions and capacity of the sites and the humanitarian needs of the residents.

Target locations for assessment were selected based on needs identified by the CCCM Cluster

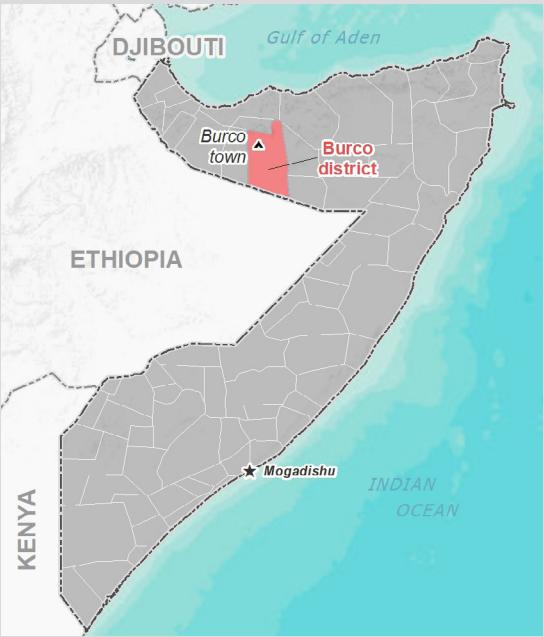
and accessibility for data collection.

A grid pattern approach² was applied during data collection to ensure that all IDP sites in the target area were identified. In each site, two key informant (KI) interviews were conducted: one with the site manager or community leader and one with a women's representative to ensure the perspectives of different groups were captured³. KI responses were aggregated to give one response per question per site.

This factsheet presents a summary of Koosar A Site profile along with the needs and priorities of IDPs residing in the site. As the data is captured through KIs, findings should be considered indicative only.

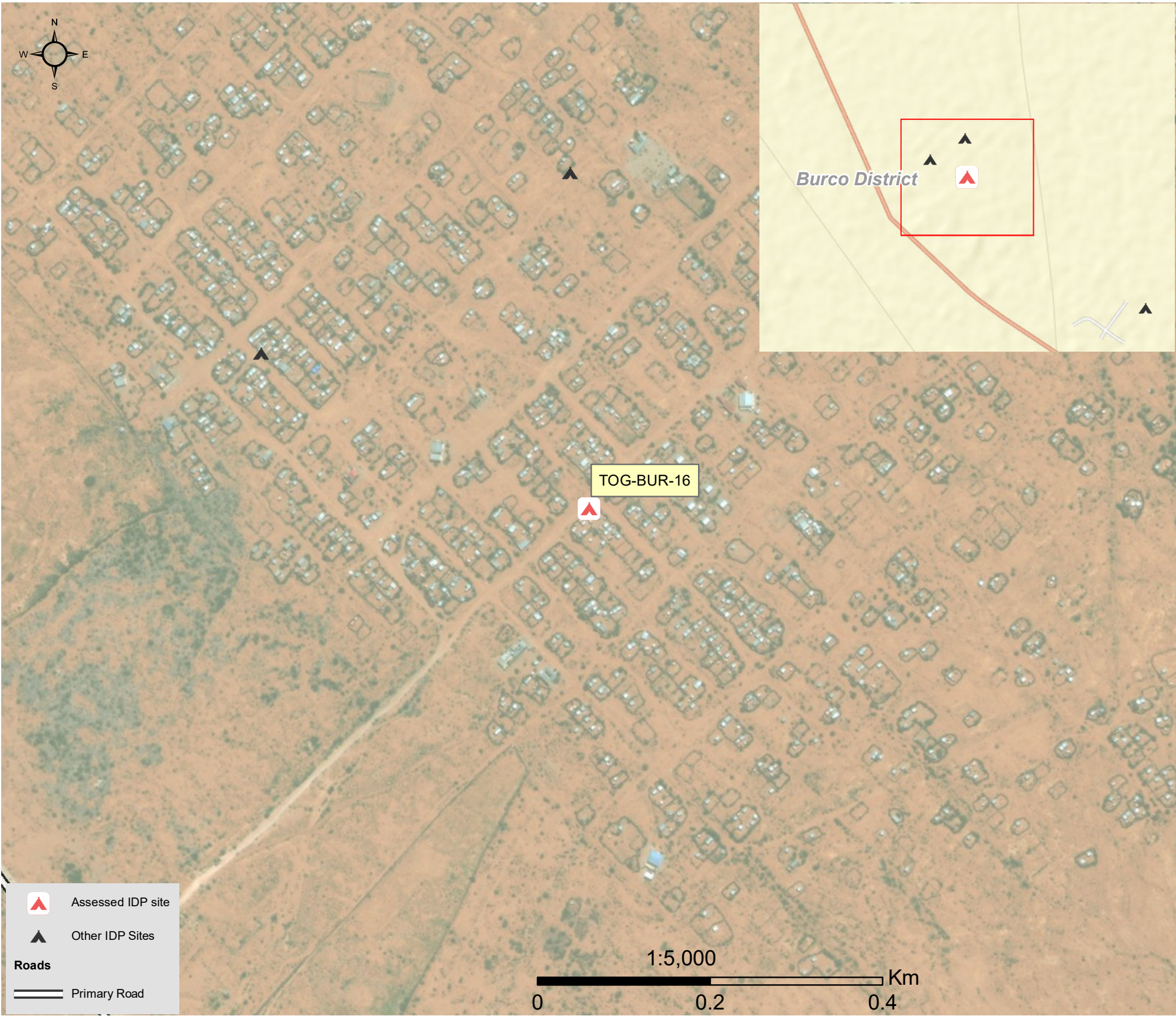
Date assessed: Nov - 2017

Location map



Assessed IDP sites in Burco

Coordinates: Lat. 9.577, Long. 45.52



1.United Nations High Commissioner for Refugees (UNHCR): Protection & Return Monitoring Network (PRMN), September 2017

2.For each target location, the area was divided into 1km² grids. Enumerator teams then visited each grid to verify whether an IDP site was present. By visiting all grids, teams were able to determine the total number of sites in each location.

3.Where KI responses were significantly divergent, these were verified with the respective KIs with a higher reliability accorded to the response provided by the site manager or community leader.



Site Information

Settlement type	Spontaneous site
Estimated number of individuals	6400
Estimated number of households	800
Site capacity reached	Yes
Responsible management agency	No management
Date when most site residents arrived	Dec-02
Site owner	Local authority



Protection

Number of vulnerable households:	
Female-headed households	200
Child-headed households	15
Elderly individuals ⁴	1400
Unaccompanied children	0
Individuals with a physical disability	10
Presence of shared community space	Yes
Presence of separate space for women/girls	No
Presence of child friendly space	No
Public lighting in the site	No
Type of landownership	Unknown
Risk of eviction in next three months	No



WASH

Access to potable water	Yes
Number of latrines in the site:	
Latrines (mixed)	30
Latrines (male)	0
Latrines (female)	0
Access to handwashing facilities	No



Shelter and Non-Food Items (NFI)

Most common shelter types in the site⁵:	
1. Buul	
2. Stone	
3. CGI	
Electricity available in the site	No
Access to a NFI market	No
Average walking time to the nearest NFI market	N/A
Perceived safe access to NFI market	N/A



Displacement

Estimated number of households per displacement group:	
IDPs	800
Host community/ non-displaced	0
IDP households arrived in the past 3 months	10
Most common areas of origin:	
First area of origin	Togdheer
Second area of origin	Sool
Third area of origin	Sanaag



Food Security

Primary source of food	Market purchase
Food distributions	Less than montly
Access to a food market	No



Health and Nutrition

Most common health issue(s) reported in the site:	
1. None	
2. N/A	
3. N/A	
Access to healthcare services	Yes
Average walking time to the nearest health service	5 minutes
Women give birth in the site	Yes
Access to nutrition services	No
Average walking time to the nearest nutrition service	N/A
Access to nutrition services:	No



Education

Education services available	Yes
Average walking time to the nearest school	3 minutes
Education facilities available to residents in the site⁵:	
1. Primary	
2. N/A	
3. N/A	



Communication

Three most trusted sources of information⁵:	
1. Religious leader	
2. Community leader	
3. Radio	
Most commonly spoken language	Somali Standard

4.More than 60 years old.
5.Key informants could select multiple responses.



Introduction

While an estimated 2.1 million people live in displacement sites in Somalia¹, existing information on exact locations and site level vulnerabilities is sparse, and existing assessments have been ad-hoc and unharmonised, resulting in low comparability and verification.

The Detailed Site Assessment (DSA) was triggered in coordination with the Camp Coordination and Camp Management (CCCM) Cluster in order to provide the humanitarian community with up-to-date information on location of internally displaced persons (IDP) sites, the conditions and capacity of the sites and the humanitarian needs of the residents.

Target locations for assessment were selected based on needs identified by the CCCM Cluster

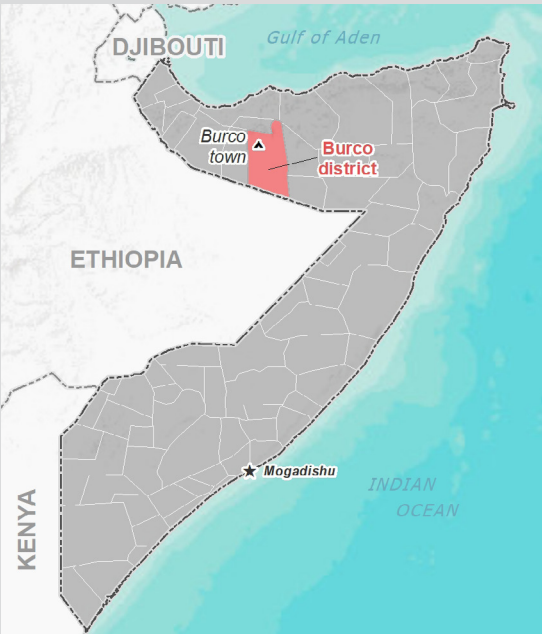
and accessibility for data collection.

A grid pattern approach² was applied during data collection to ensure that all IDP sites in the target area were identified. In each site, two key informant (KI) interviews were conducted: one with the site manager or community leader and one with a women's representative to ensure the perspectives of different groups were captured³. KI responses were aggregated to give one response per question per site.

This factsheet presents a summary of Fiifteen May Site profile along with the needs and priorities of IDPs residing in the site. As the data is captured through KIs, findings should be considered indicative only.

Date assessed: **Nov - 2017**

Location map



Assessed IDP sites in Burco

Coordinates: Lat. 9.525, Long. 45.532



1.United Nations High Commissioner for Refugees (UNHCR): Protection & Return Monitoring Network (PRMN), September 2017

2.For each target location, the area was divided into 1km² grids. Enumerator teams then visited each grid to verify whether an IDP site was present. By visiting all grids, teams were able to determine the total number of sites in each location.

3.Where KI responses were significantly divergent, these were verified with the respective KIs with a higher reliability accorded to the response provided by the site manager or community leader.



Site Information

Settlement type	Spontaneous site
Estimated number of individuals	600
Estimated number of households	100
Site capacity reached	Yes
Responsible management agency	Local authority
Date when most site residents arrived	Dec-17
Site owner	Private



Protection

Number of vulnerable households:	
Female-headed households	6
Child-headed households	5
Elderly individuals ⁴	100
Unaccompanied children	5
Individuals with a physical disability	2
Presence of shared community space	No
Presence of separate space for women/girls	No
Presence of child friendly space	No
Public lighting in the site	No
Type of landownership	None
Risk of eviction in next three months	No



WASH

Access to potable water	Yes
Number of latrines in the site:	
Latrines (mixed)	5
Latrines (male)	1
Latrines (female)	1
Access to handwashing facilities	No



Shelter and Non-Food Items (NFIs)

Most common shelter types in the site⁵:	
1. Buul	
2. Tent	
3. CGI	
Electricity available in the site	Yes
Access to a NFI market	No
Average walking time to the nearest NFI market	N/A
Perceived safe access to NFI market	N/A



Displacement

Estimated number of households per displacement group:	
IDPs	90
Host community/ non-displaced	10
IDP households arrived in the past 3 months	40
Most common areas of origin:	
First area of origin	Togdheer
Second area of origin	Sool
Third area of origin	Sanaag



Food Security

Primary source of food	Market purchase
Food distributions	Less than montly
Access to a food market	No



Health and Nutrition

Most common health issue(s) reported in the site:	
1. AWD / Cholera	
2. Malaria	
3. N/A	
Access to healthcare services	Yes
Average walking time to the nearest health service	10 minutes
Women give birth in the site	Yes
Access to nutrition services	No
Average walking time to the nearest nutrition service	N/A
Access to nutrition services:	No



Education

Education services available	Yes
Average walking time to the nearest school	5 minutes
Education facilities available to residents in the site⁵:	
1. Primary	
2. Quranic	
3. N/A	



Communication

Three most trusted sources of information⁵:	
1. Religious leader	
2. Radio	
3. N/A	
Most commonly spoken language	Somali Standard

4.More than 60 years old.

5.Key informants could select multiple responses.





Introduction

While an estimated 2.1 million people live in displacement sites in Somalia¹, existing information on exact locations and site level vulnerabilities is sparse, and existing assessments have been ad-hoc and unharmonised, resulting in low comparability and verification.

The Detailed Site Assessment (DSA) was triggered in coordination with the Camp Coordination and Camp Management (CCCM) Cluster in order to provide the humanitarian community with up-to-date information on location of internally displaced persons (IDP) sites, the conditions and capacity of the sites and the humanitarian needs of the residents.

Target locations for assessment were selected based on needs identified by the CCCM Cluster

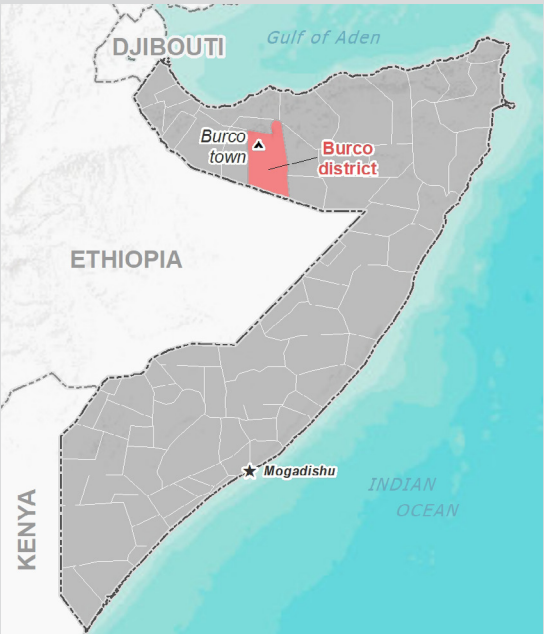
and accessibility for data collection.

A grid pattern approach² was applied during data collection to ensure that all IDP sites in the target area were identified. In each site, two key informant (KI) interviews were conducted: one with the site manager or community leader and one with a women's representative to ensure the perspectives of different groups were captured³. KI responses were aggregated to give one response per question per site.

This factsheet presents a summary of Ccaqil Yare Site profile along with the needs and priorities of IDPs residing in the site. As the data is captured through KIs, findings should be considered indicative only.

Date assessed: **Nov - 2017**

Location map



Assessed IDP sites in Burco

Coordinates: Lat. 9.525, Long. 45.532



1.United Nations High Commissioner for Refugees (UNHCR): Protection & Return Monitoring Network (PRMN), September 2017

2.For each target location, the area was divided into 1km² grids. Enumerator teams then visited each grid to verify whether an IDP site was present. By visiting all grids, teams were able to determine the total number of sites in each location.

3.Where KI responses were significantly divergent, these were verified with the respective KIs with a higher reliability accorded to the response provided by the site manager or community leader.





Site Information

Settlement type	Spontaneous site
Estimated number of individuals	600
Estimated number of households	100
Site capacity reached	No
Responsible management agency	Residents
Date when most site residents arrived	Dec-15
Site owner	Private



Protection

Number of vulnerable households:

Female-headed households	10
Child-headed households	5
Elderly individuals ⁴	100
Unaccompanied children	5
Individuals with a physical disability	5

Presence of shared community space	Yes
Presence of separate space for women/girls	No
Presence of child friendly space	No
Public lighting in the site	Yes
Type of landownership	Informal
Risk of eviction in next three months	No



WASH

Access to potable water	Yes
Number of latrines in the site:	
Latrines (mixed)	12
Latrines (male)	0
Latrines (female)	0
Access to handwashing facilities	No



Shelter and Non-Food Items (NFI)

Most common shelter types in the site⁵:

1. Buul
2. Tent
3. CGI

Electricity available in the site	Yes
Access to a NFI market	Yes
Average walking time to the nearest NFI market	12 minutes
Perceived safe access to NFI market	Yes



Displacement

Estimated number of households per displacement group:

IDPs	90
Host community/ non-displaced	10
IDP households arrived in the past 3 months	40

Most common areas of origin:

First area of origin	Sool
Second area of origin	N/A
Third area of origin	N/A



Food Security

Primary source of food	Market purchase
Food distributions	Less than montly
Access to a food market	No



Health and Nutrition

Most common health issue(s) reported in the site:

1. Other
2. N/A
3. N/A

Access to healthcare services	Yes
Average walking time to the nearest health service	25 minutes
Women give birth in the site	Yes
Access to nutrition services	No
Average walking time to the nearest nutrition service	N/A

Access to nutrition services: No



Education

Education services available	Yes
Average walking time to the nearest school	5 minutes

Education facilities available to residents in the site⁵:

1. Primary
2. Quranic
3. N/A



Communication

Three most trusted sources of information⁵:

1. Religious leader
2. Government official
3. N/A

Most commonly spoken language	Somali Standard
-------------------------------	-----------------

4.More than 60 years old.

5.Key informants could select multiple responses.

Introduction

While an estimated 2.1 million people live in displacement sites in Somalia¹, existing information on exact locations and site level vulnerabilities is sparse, and existing assessments have been ad-hoc and unharmonised, resulting in low comparability and verification.

The Detailed Site Assessment (DSA) was triggered in coordination with the Camp Coordination and Camp Management (CCCM) Cluster in order to provide the humanitarian community with up-to-date information on location of internally displaced persons (IDP) sites, the conditions and capacity of the sites and the humanitarian needs of the residents.

Target locations for assessment were selected based on needs identified by the CCCM Cluster

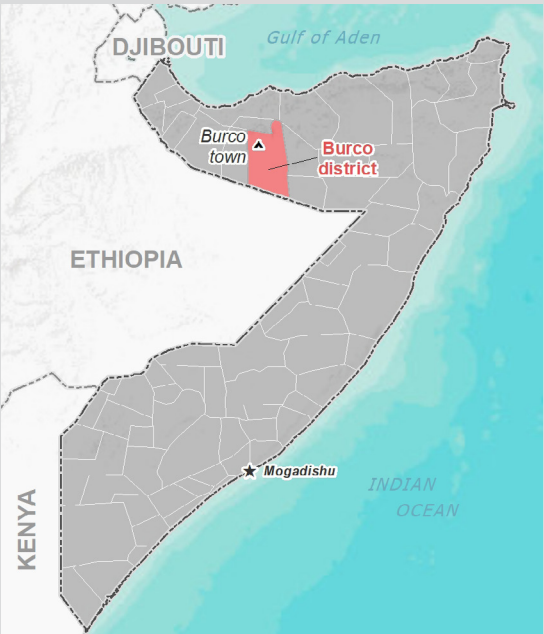
and accessibility for data collection.

A grid pattern approach² was applied during data collection to ensure that all IDP sites in the target area were identified. In each site, two key informant (KI) interviews were conducted: one with the site manager or community leader and one with a women's representative to ensure the perspectives of different groups were captured³. KI responses were aggregated to give one response per question per site.

This factsheet presents a summary of Koosar B Site profile along with the needs and priorities of IDPs residing in the site. As the data is captured through KIs, findings should be considered indicative only.

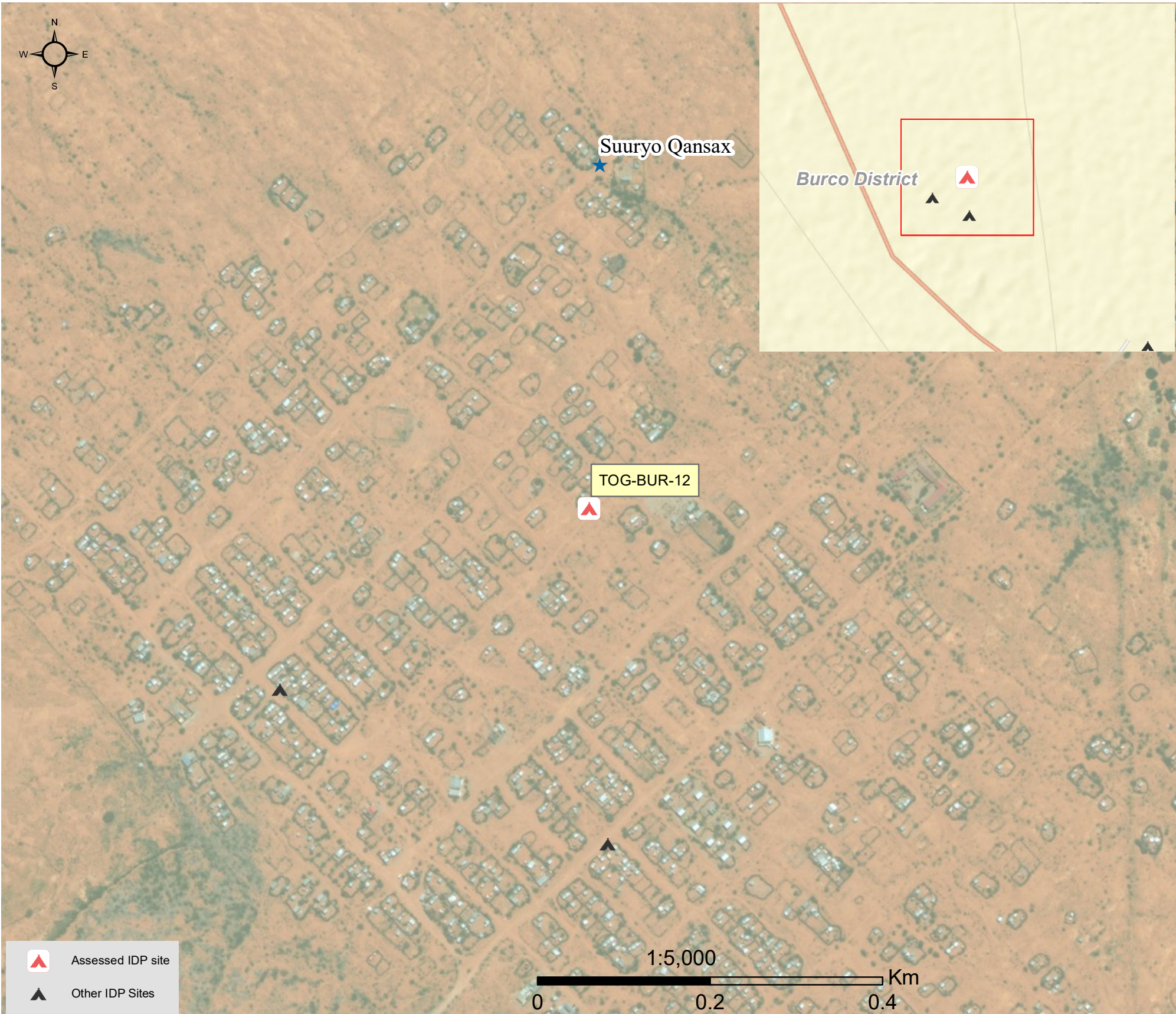
Date assessed: **Nov - 2017**

Location map



Assessed IDP sites in Burco

Coordinates: Lat. 9.58, Long. 45.52



1.United Nations High Commissioner for Refugees (UNHCR): Protection & Return Monitoring Network (PRMN), September 2017

2.For each target location, the area was divided into 1km² grids. Enumerator teams then visited each grid to verify whether an IDP site was present. By visiting all grids, teams were able to determine the total number of sites in each location.

3.Where KI responses were significantly divergent, these were verified with the respective KIs with a higher reliability accorded to the response provided by the site manager or community leader.



Site Information

Settlement type	Spontaneous site
Estimated number of individuals	4200
Estimated number of households	700
Site capacity reached	No
Responsible management agency	No management
Date when most site residents arrived	Dec-02
Site owner	Local authority



Protection

Number of vulnerable households:	
Female-headed households	300
Child-headed households	10
Elderly individuals ⁴	900
Unaccompanied children	0
Individuals with a physical disability	15
Presence of shared community space	No
Presence of separate space for women/girls	No
Presence of child friendly space	No
Public lighting in the site	Yes
Type of landownership	Unknown
Risk of eviction in next three months	No



WASH

Access to potable water	Yes
Number of latrines in the site:	
Latrines (mixed)	0
Latrines (male)	0
Latrines (female)	0
Access to handwashing facilities	N/A



Shelter and Non-Food Items (NFI)

Most common shelter types in the site⁵:	
1. Buul	
2. Stone	
3. CGI	
Electricity available in the site	No
Access to a NFI market	No
Average walking time to the nearest NFI market	N/A
Perceived safe access to NFI market	N/A



Displacement

Estimated number of households per displacement group:	
IDPs	700
Host community/ non-displaced	0
IDP households arrived in the past 3 months	20
Most common areas of origin:	
First area of origin	Togdheer
Second area of origin	Sool
Third area of origin	Sanaag



Food Security

Primary source of food	Market purchase
Food distributions	Less than montly
Access to a food market	No



Health and Nutrition

Most common health issue(s) reported in the site:	
1. None	
2. N/A	
3. N/A	
Access to healthcare services	Yes
Average walking time to the nearest health service	2 minutes
Women give birth in the site	Yes
Access to nutrition services	No
Average walking time to the nearest nutrition service	N/A
Access to nutrition services:	No



Education

Education services available	Yes
Average walking time to the nearest school	5 minutes
Education facilities available to residents in the site⁵:	
1. Primary	
2. N/A	
3. N/A	



Communication

Three most trusted sources of information⁵:	
1. Religious leader	
2. Community leader	
3. Radio	
Most commonly spoken language	Somali Standard

4.More than 60 years old.
5.Key informants could select multiple responses.



Introduction

While an estimated 2.1 million people live in displacement sites in Somalia¹, existing information on exact locations and site level vulnerabilities is sparse, and existing assessments have been ad-hoc and unharmonised, resulting in low comparability and verification.

The Detailed Site Assessment (DSA) was triggered in coordination with the Camp Coordination and Camp Management (CCCM) Cluster in order to provide the humanitarian community with up-to-date information on location of internally displaced persons (IDP) sites, the conditions and capacity of the sites and the humanitarian needs of the residents.

Target locations for assessment were selected based on needs identified by the CCCM Cluster

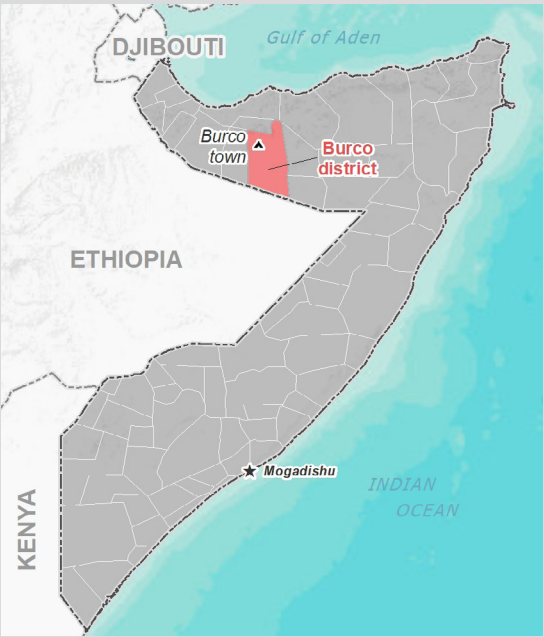
and accessibility for data collection.

A grid pattern approach² was applied during data collection to ensure that all IDP sites in the target area were identified. In each site, two key informant (KI) interviews were conducted: one with the site manager or community leader and one with a women's representative to ensure the perspectives of different groups were captured³. KI responses were aggregated to give one response per question per site.

This factsheet presents a summary of Adan Saleban A Site profile along with the needs and priorities of IDPs residing in the site. As the data is captured through KIs, findings should be considered indicative only.

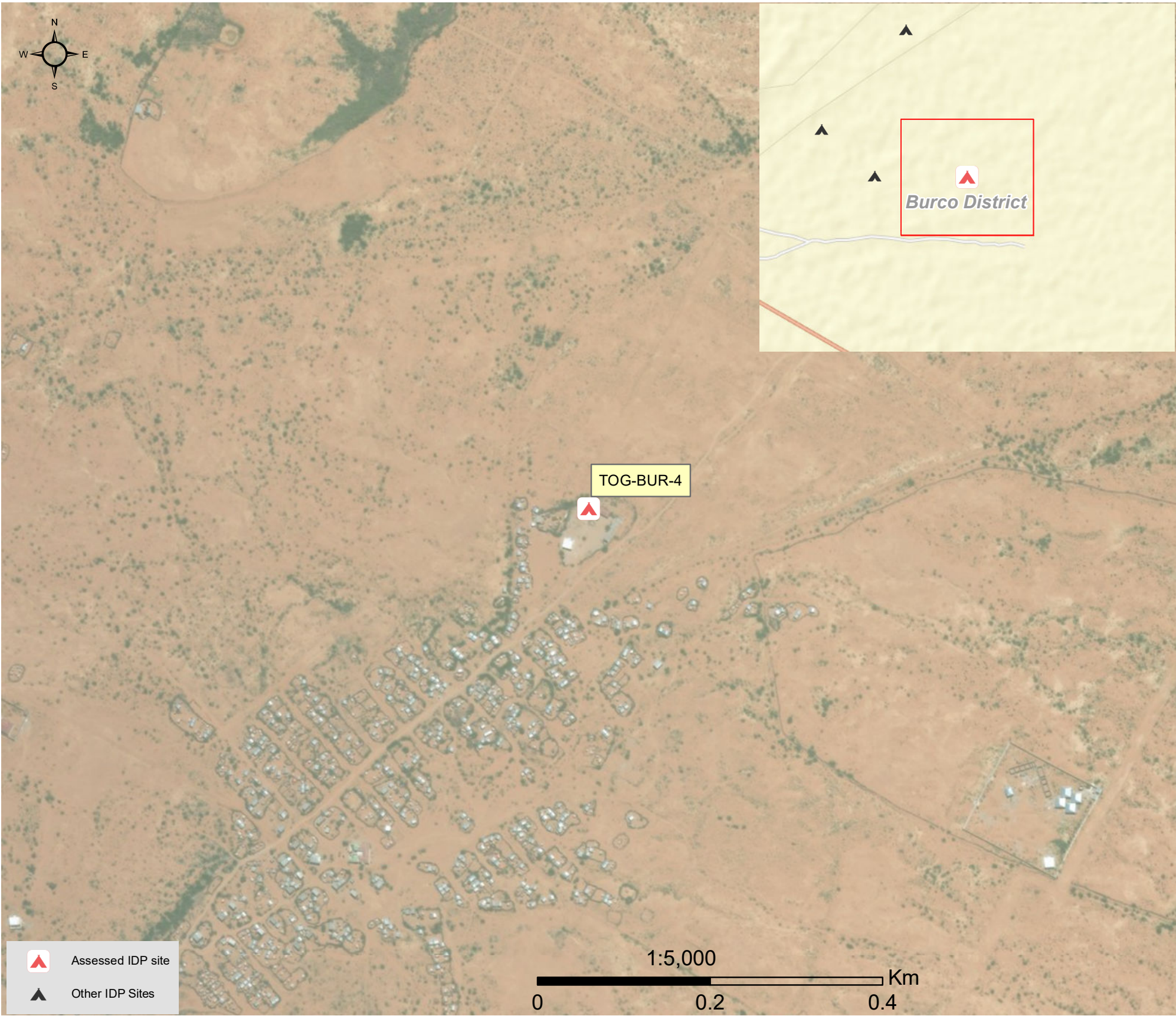
Date assessed: **Nov - 2017**

Location map



Assessed IDP sites in Burco

Coordinates: Lat. 9.525, Long. 45.579



1.United Nations High Commissioner for Refugees (UNHCR): Protection & Return Monitoring Network (PRMN), September 2017

2.For each target location, the area was divided into 1km² grids. Enumerator teams then visited each grid to verify whether an IDP site was present. By visiting all grids, teams were able to determine the total number of sites in each location.

3.Where KI responses were significantly divergent, these were verified with the respective KIs with a higher reliability accorded to the response provided by the site manager or community leader.



Site Information

Settlement type	Planned site
Estimated number of individuals	5400
Estimated number of households	900
Site capacity reached	Yes
Responsible management agency	Residents
Date when most site residents arrived	Feb-17
Site owner	Private



Protection

Number of vulnerable households:	
Female-headed households	30
Child-headed households	80
Elderly individuals ⁴	160
Unaccompanied children	40
Individuals with a physical disability	30
Presence of shared community space	Yes
Presence of separate space for women/girls	Yes
Presence of child friendly space	Yes
Public lighting in the site	No
Type of landownership	None
Risk of eviction in next three months	No



WASH

Access to potable water	Yes
Number of latrines in the site:	
Latrines (mixed)	40
Latrines (male)	0
Latrines (female)	0
Access to handwashing facilities	No



Shelter and Non-Food Items (NFI)

Most common shelter types in the site⁵:	
1. Buul	
2. Timber and plastic sheet	
3. CGI	
Electricity available in the site	Yes
Access to a NFI market	No
Average walking time to the nearest NFI market	N/A
Perceived safe access to NFI market	N/A



Displacement

Estimated number of households per displacement group:	
IDPs	850
Host community/ non-displaced	50
IDP households arrived in the past 3 months	35
Most common areas of origin:	
First area of origin	Togdheer
Second area of origin	N/A
Third area of origin	N/A



Food Security

Primary source of food	Market purchase
Food distributions	Less than montly
Access to a food market	Yes



Health and Nutrition

Most common health issue(s) reported in the site:	
1. AWD / Cholera	
2. Malaria	
3. N/A	
Access to healthcare services	Yes
Average walking time to the nearest health service	10 minutes
Women give birth in the site	Yes
Access to nutrition services	No
Average walking time to the nearest nutrition service	N/A
Access to nutrition services:	No



Education

Education services available	Yes
Average walking time to the nearest school	15 minutes
Education facilities available to residents in the site⁵:	
1. Primary	
2. Quranic	
3. N/A	



Communication

Three most trusted sources of information⁵:	
1. Religious leader	
2. Community leader	
3. Radio	
Most commonly spoken language	Somali Standard

4.More than 60 years old.

5.Key informants could select multiple responses.



Introduction

While an estimated 2.1 million people live in displacement sites in Somalia¹, existing information on exact locations and site level vulnerabilities is sparse, and existing assessments have been ad-hoc and unharmonised, resulting in low comparability and verification.

The Detailed Site Assessment (DSA) was triggered in coordination with the Camp Coordination and Camp Management (CCCM) Cluster in order to provide the humanitarian community with up-to-date information on location of internally displaced persons (IDP) sites, the conditions and capacity of the sites and the humanitarian needs of the residents.

Target locations for assessment were selected based on needs identified by the CCCM Cluster

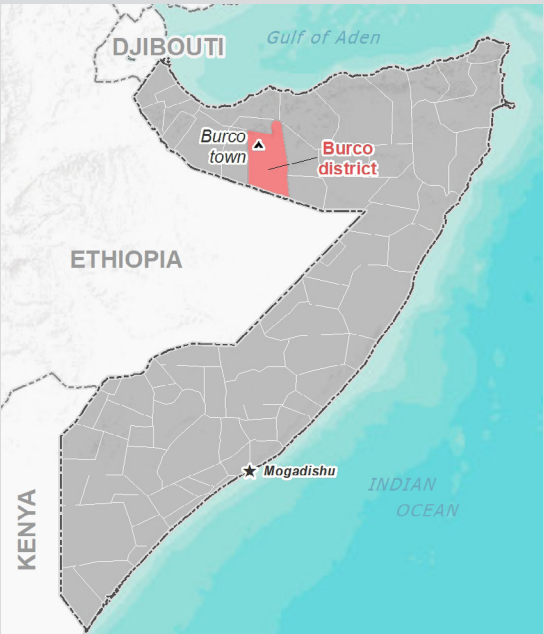
and accessibility for data collection.

A grid pattern approach² was applied during data collection to ensure that all IDP sites in the target area were identified. In each site, two key informant (KI) interviews were conducted: one with the site manager or community leader and one with a women's representative to ensure the perspectives of different groups were captured³. KI responses were aggregated to give one response per question per site.

This factsheet presents a summary of Adan Saleban B1 Site profile along with the needs and priorities of IDPs residing in the site. As the data is captured through KIs, findings should be considered indicative only.

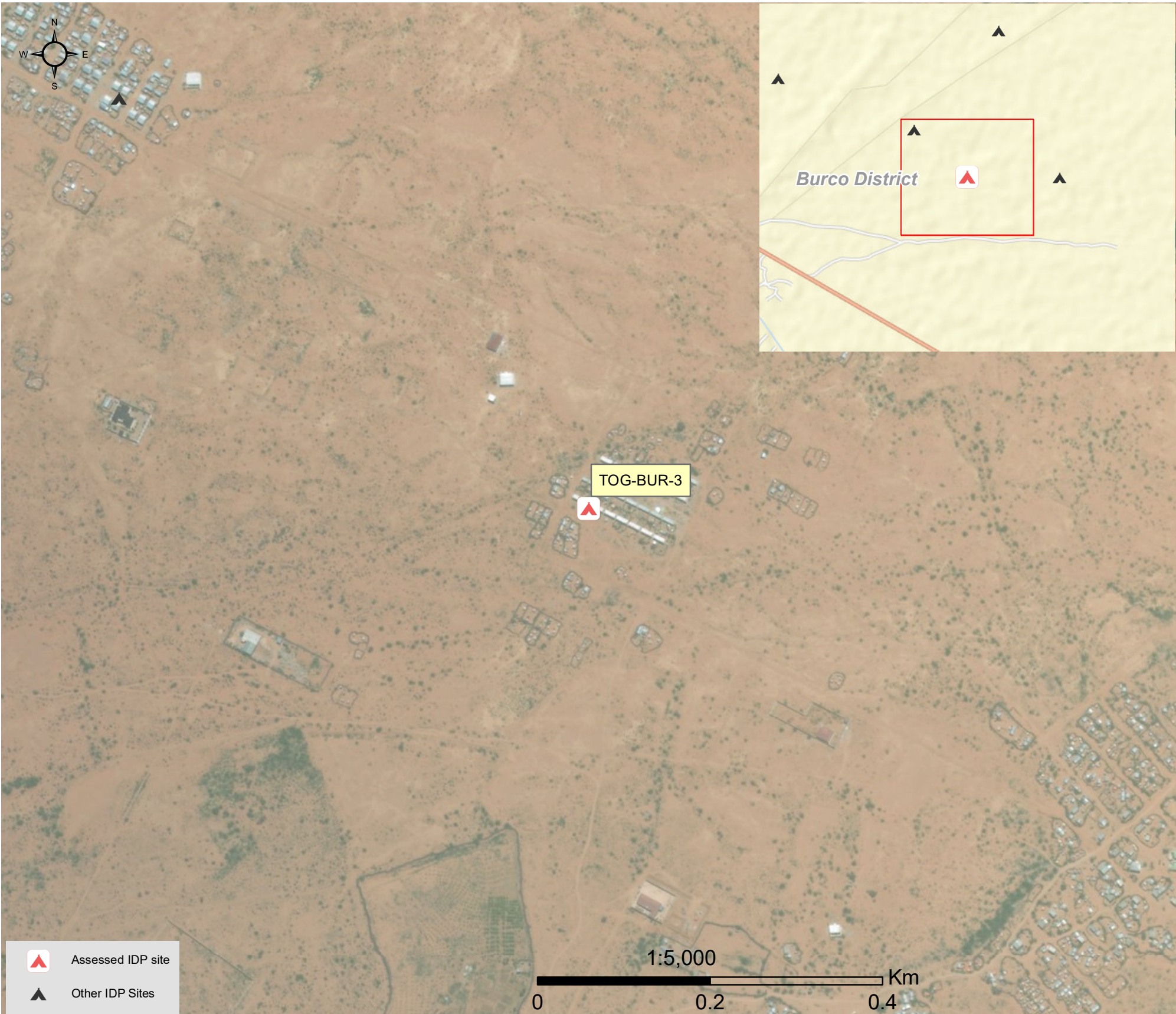
Date assessed: **Nov - 2017**

Location map



Assessed IDP sites in Burco

Coordinates: Lat. 9.525, Long. 45.571



1.United Nations High Commissioner for Refugees (UNHCR): Protection & Return Monitoring Network (PRMN), September 2017

2.For each target location, the area was divided into 1km² grids. Enumerator teams then visited each grid to verify whether an IDP site was present. By visiting all grids, teams were able to determine the total number of sites in each location.

3.Where KI responses were significantly divergent, these were verified with the respective KIs with a higher reliability accorded to the response provided by the site manager or community leader.



Site Information

Settlement type	Planned site
Estimated number of individuals	600
Estimated number of households	100
Site capacity reached	Yes
Responsible management agency	Residents
Date when most site residents arrived	Dec-16
Site owner	Private



Protection

Number of vulnerable households:

Female-headed households	30
Child-headed households	3
Elderly individuals ⁴	100
Unaccompanied children	5
Individuals with a physical disability	3

Presence of shared community space	No
Presence of separate space for women/girls	No
Presence of child friendly space	No
Public lighting in the site	No
Type of landownership	None
Risk of eviction in next three months	No



WASH

Access to potable water	Yes
Number of latrines in the site:	
Latrines (mixed)	20
Latrines (male)	0
Latrines (female)	0
Access to handwashing facilities	No



Shelter and Non-Food Items (NFI)

Most common shelter types in the site⁵:

1. Buul
2. Timber and plastic sheet
3. CGI

Electricity available in the site	Yes
Access to a NFI market	No
Average walking time to the nearest NFI market	N/A
Perceived safe access to NFI market	N/A



Displacement

Estimated number of households per displacement group:

IDPs	100
Host community/ non-displaced	0
IDP households arrived in the past 3 months	10

Most common areas of origin:

First area of origin	Togdheer
Second area of origin	N/A
Third area of origin	N/A



Food Security

Primary source of food	Market purchase
Food distributions	Less than montly
Access to a food market	Yes



Health and Nutrition

Most common health issue(s) reported in the site:

1. AWD / Cholera
2. N/A
3. N/A

Access to healthcare services	Yes
Average walking time to the nearest health service	25 minutes
Women give birth in the site	Yes
Access to nutrition services	Yes
Average walking time to the nearest nutrition service	30 minutes

Access to nutrition services: Yes



Education

Education services available	Yes
Average walking time to the nearest school	30 minutes

Education facilities available to residents in the site⁵:

1. Primary
2. Quranic
3. N/A



Communication

Three most trusted sources of information⁵:

1. Religious leader
2. Community leader
3. Radio

Most commonly spoken language	Somali Standard
-------------------------------	-----------------

4.More than 60 years old.

5.Key informants could select multiple responses.



Introduction

While an estimated 2.1 million people live in displacement sites in Somalia¹, existing information on exact locations and site level vulnerabilities is sparse, and existing assessments have been ad-hoc and unharmonised, resulting in low comparability and verification.

The Detailed Site Assessment (DSA) was triggered in coordination with the Camp Coordination and Camp Management (CCCM) Cluster in order to provide the humanitarian community with up-to-date information on location of internally displaced persons (IDP) sites, the conditions and capacity of the sites and the humanitarian needs of the residents.

Target locations for assessment were selected based on needs identified by the CCCM Cluster

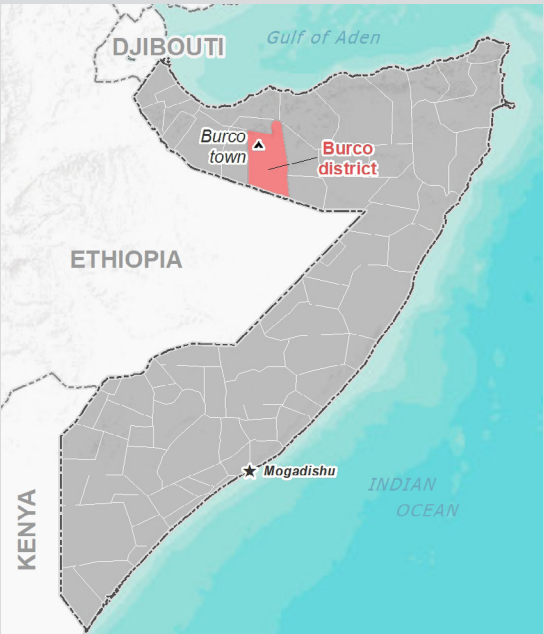
and accessibility for data collection.

A grid pattern approach² was applied during data collection to ensure that all IDP sites in the target area were identified. In each site, two key informant (KI) interviews were conducted: one with the site manager or community leader and one with a women's representative to ensure the perspectives of different groups were captured³. KI responses were aggregated to give one response per question per site.

This factsheet presents a summary of Adan Saleban B2 Site profile along with the needs and priorities of IDPs residing in the site. As the data is captured through KIs, findings should be considered indicative only.

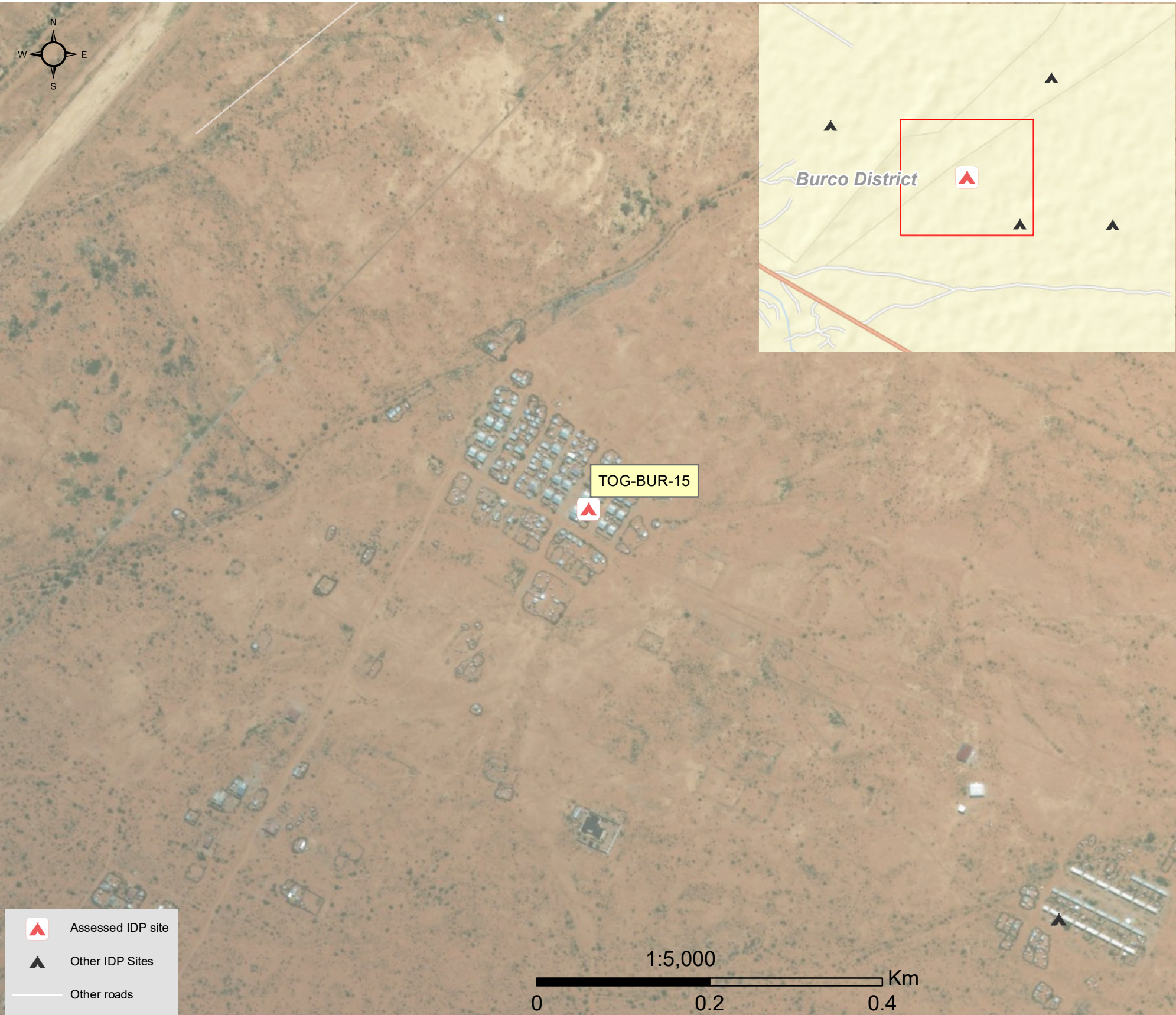
Date assessed: **Nov - 2017**

Location map



Assessed IDP sites in Burco

Coordinates: Lat. 9.53, Long. 45.566



1.United Nations High Commissioner for Refugees (UNHCR): Protection & Return Monitoring Network (PRMN), September 2017

2.For each target location, the area was divided into 1km² grids. Enumerator teams then visited each grid to verify whether an IDP site was present. By visiting all grids, teams were able to determine the total number of sites in each location.

3.Where KI responses were significantly divergent, these were verified with the respective KIs with a higher reliability accorded to the response provided by the site manager or community leader.



Site Information

Settlement type	Planned site
Estimated number of individuals	2400
Estimated number of households	400
Site capacity reached	Yes
Responsible management agency	Residents
Date when most site residents arrived	May-17
Site owner	Private



Protection

Number of vulnerable households:

Female-headed households	30
Child-headed households	6
Elderly individuals ⁴	100
Unaccompanied children	10
Individuals with a physical disability	11

Presence of shared community space	No
Presence of separate space for women/girls	No
Presence of child friendly space	No
Public lighting in the site	No
Type of landownership	None
Risk of eviction in next three months	No



WASH

Access to potable water	Yes
Number of latrines in the site:	
Latrines (mixed)	40
Latrines (male)	0
Latrines (female)	0
Access to handwashing facilities	No



Shelter and Non-Food Items (NFIs)

Most common shelter types in the site⁵:

1. Buul	
2. Timber and plastic sheet	
3. Stone	
Electricity available in the site	Yes
Access to a NFI market	No
Average walking time to the nearest NFI market	N/A
Perceived safe access to NFI market	N/A



Displacement

Estimated number of households per displacement group:

IDPs	392
Host community/ non-displaced	8
IDP households arrived in the past 3 months	15

Most common areas of origin:

First area of origin	Togdheer
Second area of origin	N/A
Third area of origin	N/A



Food Security

Primary source of food	Market purchase
Food distributions	Less than montly
Access to a food market	No



Health and Nutrition

Most common health issue(s) reported in the site:

1. AWD / Cholera
2. N/A
3. N/A

Access to healthcare services	Yes
Average walking time to the nearest health service	30 minutes
Women give birth in the site	Yes
Access to nutrition services	No
Average walking time to the nearest nutrition service	N/A

Access to nutrition services: No



Education

Education services available	Yes
Average walking time to the nearest school	30 minutes

Education facilities available to residents in the site⁵:

1. Primary
2. Quranic
3. N/A



Communication

Three most trusted sources of information⁵:

1. Religious leader
2. Community leader
3. Radio

Most commonly spoken language	Somali Standard
-------------------------------	-----------------

4.More than 60 years old.

5.Key informants could select multiple responses.



Introduction

While an estimated 2.1 million people live in displacement sites in Somalia¹, existing information on exact locations and site level vulnerabilities is sparse, and existing assessments have been ad-hoc and unharmonised, resulting in low comparability and verification.

The Detailed Site Assessment (DSA) was triggered in coordination with the Camp Coordination and Camp Management (CCCM) Cluster in order to provide the humanitarian community with up-to-date information on location of internally displaced persons (IDP) sites, the conditions and capacity of the sites and the humanitarian needs of the residents.

Target locations for assessment were selected based on needs identified by the CCCM Cluster

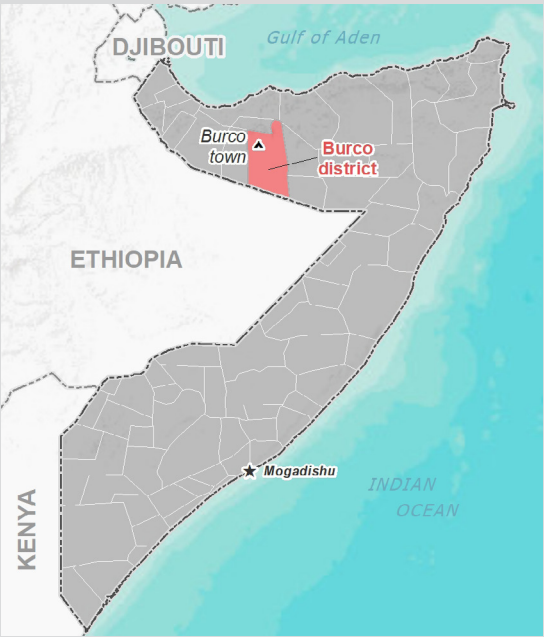
and accessibility for data collection.

A grid pattern approach² was applied during data collection to ensure that all IDP sites in the target area were identified. In each site, two key informant (KI) interviews were conducted: one with the site manager or community leader and one with a women's representative to ensure the perspectives of different groups were captured³. KI responses were aggregated to give one response per question per site.

This factsheet presents a summary of Caaqil Yare Site profile along with the needs and priorities of IDPs residing in the site. As the data is captured through KIs, findings should be considered indicative only.

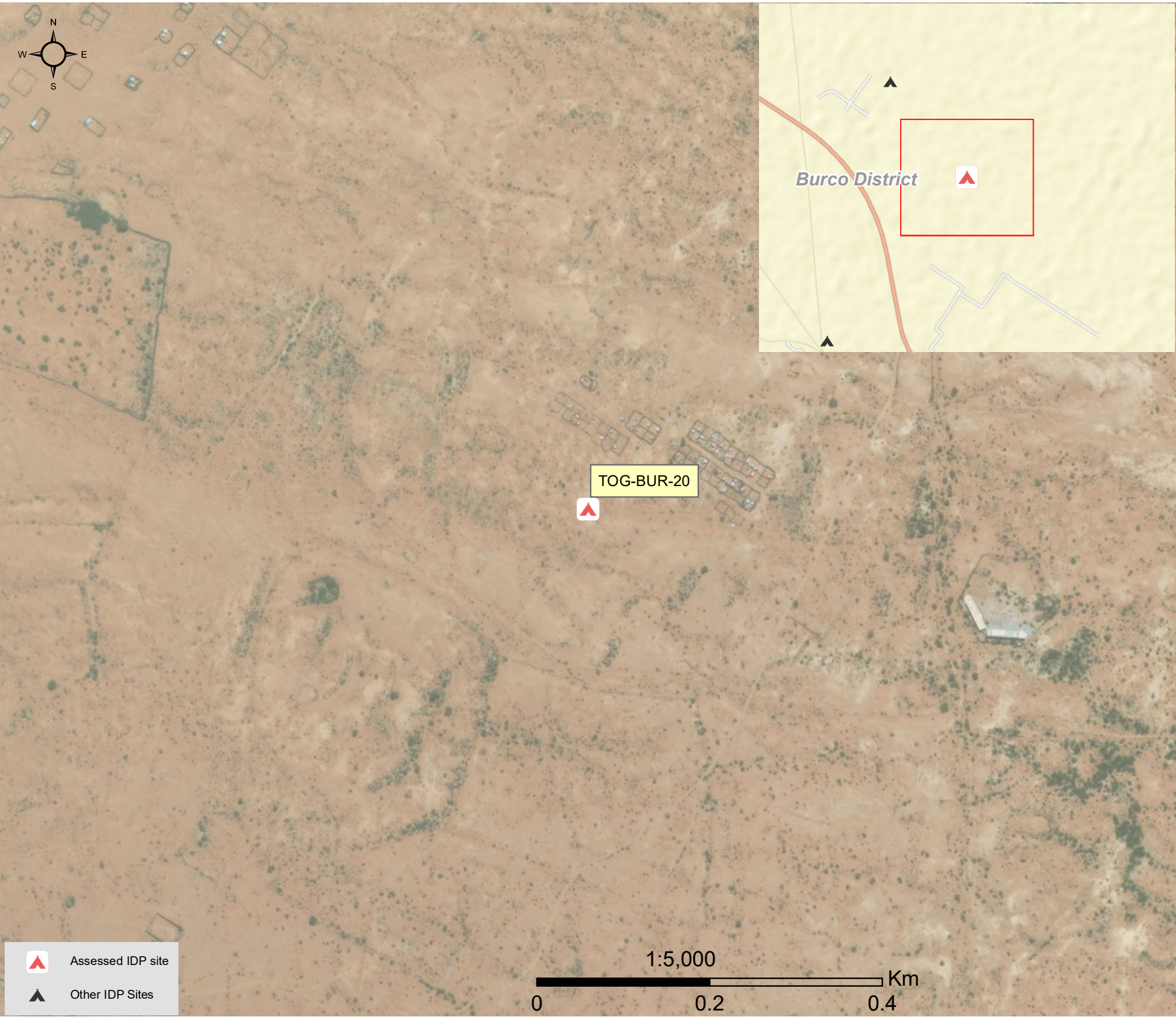
Date assessed: **Nov - 2017**

Location map



Assessed IDP sites in Burco

Coordinates: Lat. 9.556, Long. 45.543



1.United Nations High Commissioner for Refugees (UNHCR): Protection & Return Monitoring Network (PRMN), September 2017

2.For each target location, the area was divided into 1km² grids. Enumerator teams then visited each grid to verify whether an IDP site was present. By visiting all grids, teams were able to determine the total number of sites in each location.

3.Where KI responses were significantly divergent, these were verified with the respective KIs with a higher reliability accorded to the response provided by the site manager or community leader.



Site Information

Settlement type	Spontaneous site
Estimated number of individuals	4200
Estimated number of households	700
Site capacity reached	No
Responsible management agency	Residents
Date when most site residents arrived	Mar-17
Site owner	Local authority



Protection

Number of vulnerable households:

Female-headed households	70
Child-headed households	20
Elderly individuals ⁴	800
Unaccompanied children	0
Individuals with a physical disability	30

Presence of shared community space	No
Presence of separate space for women/girls	No
Presence of child friendly space	No
Public lighting in the site	No
Type of landownership	Informal
Risk of eviction in next three months	No



WASH

Access to potable water	Yes
Number of latrines in the site:	
Latrines (mixed)	40
Latrines (male)	0
Latrines (female)	0
Access to handwashing facilities	No



Shelter and Non-Food Items (NFI)

Most common shelter types in the site⁵:

1. Buul
2. N/A
3. N/A

Electricity available in the site	Yes
Access to a NFI market	No
Average walking time to the nearest NFI market	N/A
Perceived safe access to NFI market	N/A



Displacement

Estimated number of households per displacement group:

IDPs	700
Host community/ non-displaced	0
IDP households arrived in the past 3 months	100

Most common areas of origin:

First area of origin	Togdheer
Second area of origin	N/A
Third area of origin	N/A



Food Security

Primary source of food	Market purchase
Food distributions	Less than montly
Access to a food market	No



Health and Nutrition

Most common health issue(s) reported in the site:

1. AWD / Cholera
2. Malaria
3. Diphtheria

Access to healthcare services	No
Average walking time to the nearest health service	N/A
Women give birth in the site	Yes
Access to nutrition services	No
Average walking time to the nearest nutrition service	N/A

Access to nutrition services: No



Education

Education services available	Yes
Average walking time to the nearest school	30 minutes

Education facilities available to residents in the site⁵:

1. Primary
2. Quranic
3. N/A



Communication

Three most trusted sources of information⁵:

1. Religious leader
2. Community leader
3. N/A

Most commonly spoken language	Somali Standard
-------------------------------	-----------------

4.More than 60 years old.

5.Key informants could select multiple responses.



Introduction

While an estimated 2.1 million people live in displacement sites in Somalia¹, existing information on exact locations and site level vulnerabilities is sparse, and existing assessments have been ad-hoc and unharmonised, resulting in low comparability and verification.

The Detailed Site Assessment (DSA) was triggered in coordination with the Camp Coordination and Camp Management (CCCM) Cluster in order to provide the humanitarian community with up-to-date information on location of internally displaced persons (IDP) sites, the conditions and capacity of the sites and the humanitarian needs of the residents.

Target locations for assessment were selected based on needs identified by the CCCM Cluster

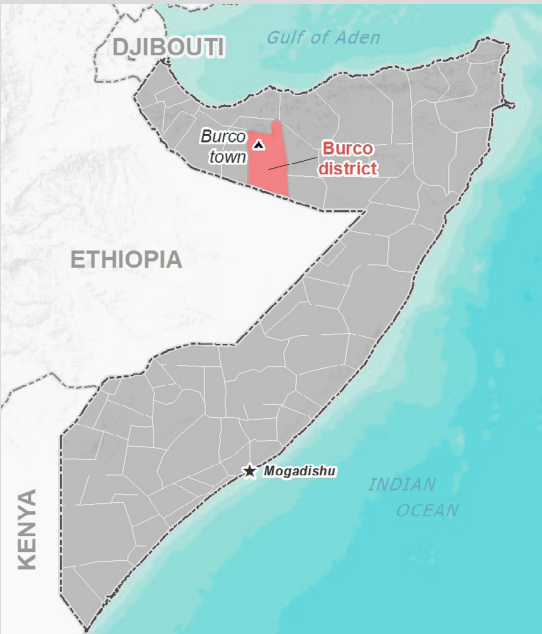
and accessibility for data collection.

A grid pattern approach² was applied during data collection to ensure that all IDP sites in the target area were identified. In each site, two key informant (KI) interviews were conducted: one with the site manager or community leader and one with a women's representative to ensure the perspectives of different groups were captured³. KI responses were aggregated to give one response per question per site.

This factsheet presents a summary of Sahara Site profile along with the needs and priorities of IDPs residing in the site. As the data is captured through KIs, findings should be considered indicative only.

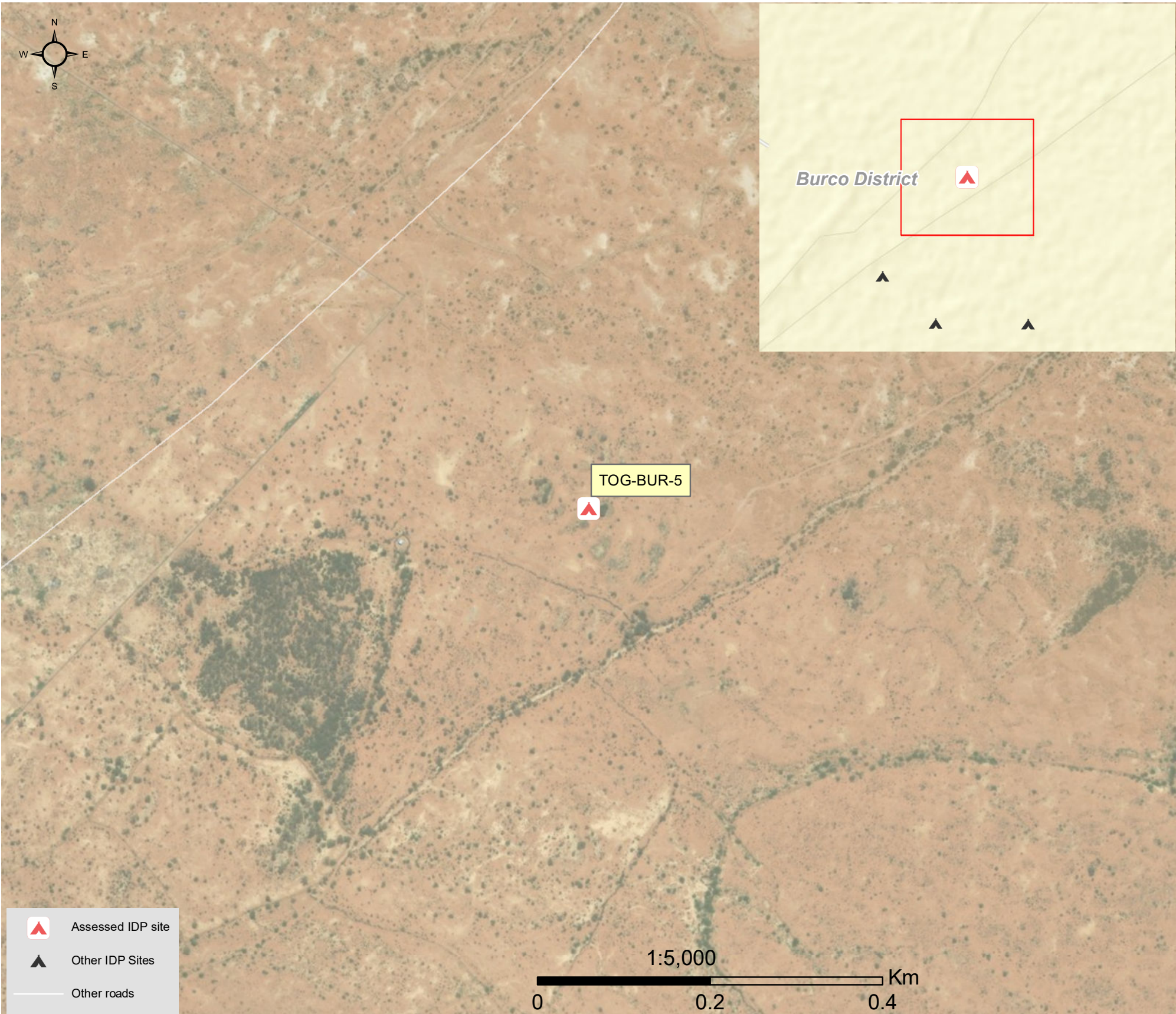
Date assessed: **Nov - 2017**

Location map



Assessed IDP sites in Burco

Coordinates: Lat. 9.539, Long. 45.574



1.United Nations High Commissioner for Refugees (UNHCR): Protection & Return Monitoring Network (PRMN), September 2017

2.For each target location, the area was divided into 1km² grids. Enumerator teams then visited each grid to verify whether an IDP site was present. By visiting all grids, teams were able to determine the total number of sites in each location.

3.Where KI responses were significantly divergent, these were verified with the respective KIs with a higher reliability accorded to the response provided by the site manager or community leader.



Site Information

Settlement type	Spontaneous site
Estimated number of individuals	5705
Estimated number of households	815
Site capacity reached	Yes
Responsible management agency	Residents
Date when most site residents arrived	Nov-16
Site owner	Private



Protection

Number of vulnerable households:	
Female-headed households	150
Child-headed households	13
Elderly individuals ⁴	705
Unaccompanied children	0
Individuals with a physical disability	20
Presence of shared community space	No
Presence of separate space for women/girls	Yes
Presence of child friendly space	No
Public lighting in the site	No
Type of landownership	None
Risk of eviction in next three months	Yes



WASH

Access to potable water	No
Number of latrines in the site:	
Latrines (mixed)	0
Latrines (male)	0
Latrines (female)	0
Access to handwashing facilities	N/A



Shelter and Non-Food Items (NFI)

Most common shelter types in the site⁵:	
1. Buul	
2. Tent	
3. Timber and plastic sheet	
Electricity available in the site	No
Access to a NFI market	No
Average walking time to the nearest NFI market	N/A
Perceived safe access to NFI market	N/A



Displacement

Estimated number of households per displacement group:	
IDPs	700
Host community/ non-displaced	115
IDP households arrived in the past 3 months	100
Most common areas of origin:	
First area of origin	Togdheer
Second area of origin	Sanaag
Third area of origin	Sool



Food Security

Primary source of food	Market purchase
Food distributions	Less than montly
Access to a food market	Yes



Health and Nutrition

Most common health issue(s) reported in the site:	
1. AWD / Cholera	
2. Malaria	
3. N/A	
Access to healthcare services	No
Average walking time to the nearest health service	N/A
Women give birth in the site	Yes
Access to nutrition services	No
Average walking time to the nearest nutrition service	N/A
Access to nutrition services:	No



Education

Education services available	No
Average walking time to the nearest school	N/A
Education facilities available to residents in the site⁵:	
1. N/A	
2. N/A	
3. N/A	



Communication

Three most trusted sources of information⁵:	
1. Community leader	
2. Radio	
3. N/A	
Most commonly spoken language	Somali Standard

4.More than 60 years old.
5.Key informants could select multiple responses.



Introduction

While an estimated 2.1 million people live in displacement sites in Somalia¹, existing information on exact locations and site level vulnerabilities is sparse, and existing assessments have been ad-hoc and unharmonised, resulting in low comparability and verification.

The Detailed Site Assessment (DSA) was triggered in coordination with the Camp Coordination and Camp Management (CCCM) Cluster in order to provide the humanitarian community with up-to-date information on location of internally displaced persons (IDP) sites, the conditions and capacity of the sites and the humanitarian needs of the residents.

Target locations for assessment were selected based on needs identified by the CCCM Cluster

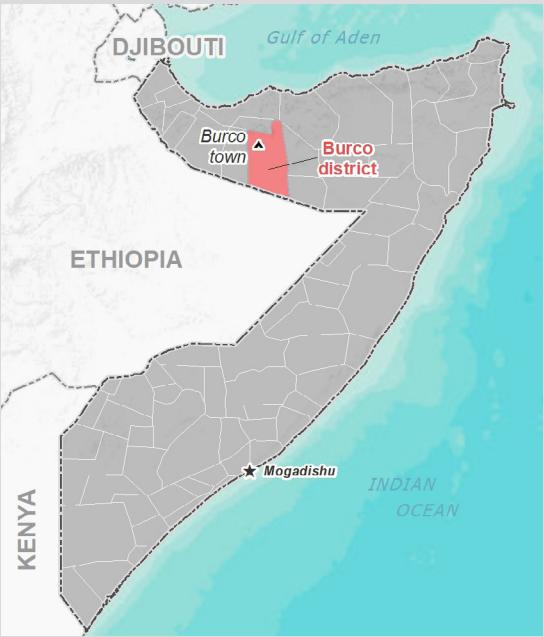
and accessibility for data collection.

A grid pattern approach² was applied during data collection to ensure that all IDP sites in the target area were identified. In each site, two key informant (KI) interviews were conducted: one with the site manager or community leader and one with a women's representative to ensure the perspectives of different groups were captured³. KI responses were aggregated to give one response per question per site.

This factsheet presents a summary of Qunyar Dega Site profile along with the needs and priorities of IDPs residing in the site. As the data is captured through KIs, findings should be considered indicative only.

Date assessed: **Nov - 2017**

Location map



Assessed IDP sites in Burco

Coordinates: Lat. 9.537, Long. 45.538



1.United Nations High Commissioner for Refugees (UNHCR): Protection & Return Monitoring Network (PRMN), September 2017

2.For each target location, the area was divided into 1km² grids. Enumerator teams then visited each grid to verify whether an IDP site was present. By visiting all grids, teams were able to determine the total number of sites in each location.

3.Where KI responses were significantly divergent, these were verified with the respective KIs with a higher reliability accorded to the response provided by the site manager or community leader.



Site Information

Settlement type	Spontaneous site
Estimated number of individuals	3000
Estimated number of households	1500
Site capacity reached	Yes
Responsible management agency	Residents
Date when most site residents arrived	Apr-99
Site owner	Federal govern-



Protection

Number of vulnerable households:	
Female-headed households	900
Child-headed households	3
Elderly individuals ⁴	300
Unaccompanied children	6
Individuals with a physical disability	5
Presence of shared community space	Yes
Presence of separate space for women/girls	Yes
Presence of child friendly space	No
Public lighting in the site	Yes
Type of landownership	Informal
Risk of eviction in next three months	No



WASH

Access to potable water	Yes
Number of latrines in the site:	
Latrines (mixed)	3
Latrines (male)	0
Latrines (female)	0
Access to handwashing facilities	No



Shelter and Non-Food Items (NFI)

Most common shelter types in the site⁵:	
1. Buul	
2. Timber and plastic sheet	
3. CGI	
Electricity available in the site	Yes
Access to a NFI market	No
Average walking time to the nearest NFI market	N/A
Perceived safe access to NFI market	N/A



Displacement

Estimated number of households per displacement group:	
IDPs	1200
Host community/ non-displaced	300
IDP households arrived in the past 3 months	230
Most common areas of origin:	
First area of origin	Togdheer
Second area of origin	Sool
Third area of origin	N/A



Food Security

Primary source of food	Market purchase
Food distributions	None
Access to a food market	Yes



Health and Nutrition

Most common health issue(s) reported in the site:	
1. AWD / Cholera	
2. Malaria	
3. N/A	
Access to healthcare services	No
Average walking time to the nearest health service	N/A
Women give birth in the site	Yes
Access to nutrition services	No
Average walking time to the nearest nutrition service	N/A
Access to nutrition services:	No



Education

Education services available	Yes
Average walking time to the nearest school	5 minutes
Education facilities available to residents in the site⁵:	
1. Primary	
2. Secondary	
3. Quranic	



Communication

Three most trusted sources of information⁵:	
1. TV	
2. Community leader	
3. Radio	
Most commonly spoken language	Somali Standard

4.More than 60 years old.

5.Key informants could select multiple responses.



Introduction

While an estimated 2.1 million people live in displacement sites in Somalia¹, existing information on exact locations and site level vulnerabilities is sparse, and existing assessments have been ad-hoc and unharmonised, resulting in low comparability and verification.

The Detailed Site Assessment (DSA) was triggered in coordination with the Camp Coordination and Camp Management (CCCM) Cluster in order to provide the humanitarian community with up-to-date information on location of internally displaced persons (IDP) sites, the conditions and capacity of the sites and the humanitarian needs of the residents.

Target locations for assessment were selected based on needs identified by the CCCM Cluster

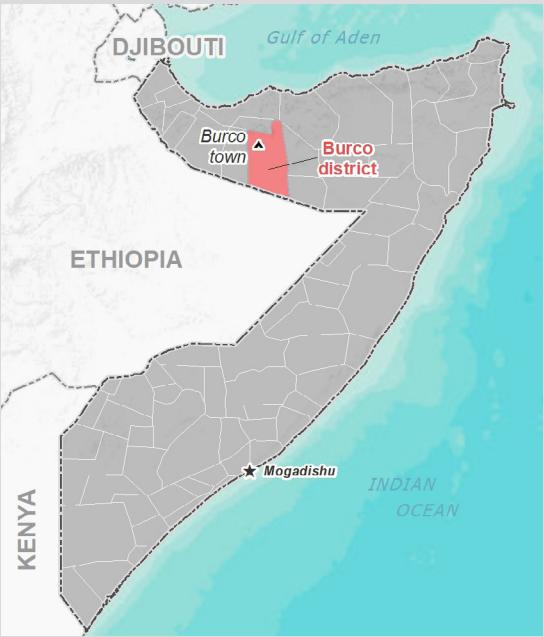
and accessibility for data collection.

A grid pattern approach² was applied during data collection to ensure that all IDP sites in the target area were identified. In each site, two key informant (KI) interviews were conducted: one with the site manager or community leader and one with a women's representative to ensure the perspectives of different groups were captured³. KI responses were aggregated to give one response per question per site.

This factsheet presents a summary of Tawakal Site profile along with the needs and priorities of IDPs residing in the site. As the data is captured through KIs, findings should be considered indicative only.

Date assessed: **Nov - 2017**

Location map



Assessed IDP sites in Burco

Coordinates: Lat. 9.53, Long. 45.531



1.United Nations High Commissioner for Refugees (UNHCR): Protection & Return Monitoring Network (PRMN), September 2017

2.For each target location, the area was divided into 1km² grids. Enumerator teams then visited each grid to verify whether an IDP site was present. By visiting all grids, teams were able to determine the total number of sites in each location.

3.Where KI responses were significantly divergent, these were verified with the respective KIs with a higher reliability accorded to the response provided by the site manager or community leader.



Site Information

Settlement type	Spontaneous site
Estimated number of individuals	3000
Estimated number of households	500
Site capacity reached	Yes
Responsible management agency	Residents
Date when most site residents arrived	May-00
Site owner	Local authority



Protection

Number of vulnerable households:	
Female-headed households	5
Child-headed households	5
Elderly individuals ⁴	115
Unaccompanied children	2
Individuals with a physical disability	8
Presence of shared community space	No
Presence of separate space for women/girls	Yes
Presence of child friendly space	No
Public lighting in the site	No
Type of landownership	None
Risk of eviction in next three months	No



WASH

Access to potable water	Yes
Number of latrines in the site:	
Latrines (mixed)	15
Latrines (male)	8
Latrines (female)	10
Access to handwashing facilities	No



Shelter and Non-Food Items (NFI)

Most common shelter types in the site ⁵ :	
1. Buul	
2. Timber and plastic sheet	
3. Stone	
Electricity available in the site	Yes
Access to a NFI market	Yes
Average walking time to the nearest NFI market	15 minutes
Perceived safe access to NFI market	Yes



Displacement

Estimated number of households per displacement group:	
IDPs	450
Host community/ non-displaced	50
IDP households arrived in the past 3 months	25
Most common areas of origin:	
First area of origin	Sanaag
Second area of origin	Nugaal
Third area of origin	Togdheer



Food Security

Primary source of food	Market purchase
Food distributions	None
Access to a food market	Yes



Health and Nutrition

Most common health issue(s) reported in the site:	
1. Other	
2. N/A	
3. N/A	
Access to healthcare services	Yes
Average walking time to the nearest health service	20 minutes
Women give birth in the site	Yes
Access to nutrition services	Yes
Average walking time to the nearest nutrition service	5 minutes
Access to nutrition services:	Yes



Education

Education services available	Yes
Average walking time to the nearest school	5 minutes
Education facilities available to residents in the site ⁵ :	
1. Primary	
2. N/A	
3. N/A	



Communication

Three most trusted sources of information ⁵ :	
1. Religious leader	
2. Community leader	
3. Radio	
Most commonly spoken language	Somali Standard

4.More than 60 years old.
5.Key informants could select multiple responses.



Introduction

While an estimated 2.1 million people live in displacement sites in Somalia¹, existing information on exact locations and site level vulnerabilities is sparse, and existing assessments have been ad-hoc and unharmonised, resulting in low comparability and verification.

The Detailed Site Assessment (DSA) was triggered in coordination with the Camp Coordination and Camp Management (CCCM) Cluster in order to provide the humanitarian community with up-to-date information on location of internally displaced persons (IDP) sites, the conditions and capacity of the sites and the humanitarian needs of the residents.

Target locations for assessment were selected based on needs identified by the CCCM Cluster

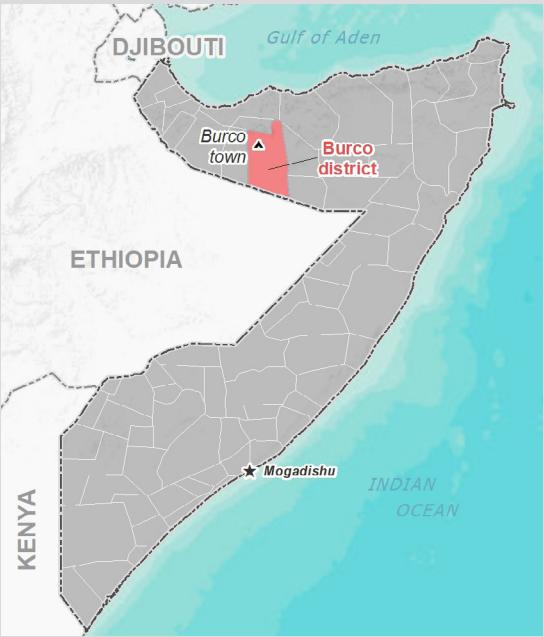
and accessibility for data collection.

A grid pattern approach² was applied during data collection to ensure that all IDP sites in the target area were identified. In each site, two key informant (KI) interviews were conducted: one with the site manager or community leader and one with a women's representative to ensure the perspectives of different groups were captured³. KI responses were aggregated to give one response per question per site.

This factsheet presents a summary of Koosaar C Site profile along with the needs and priorities of IDPs residing in the site. As the data is captured through KIs, findings should be considered indicative only.

Date assessed: **Nov - 2017**

Location map



Assessed IDP sites in Burco

Coordinates: Lat. 9.578, Long. 45.516



1.United Nations High Commissioner for Refugees (UNHCR): Protection & Return Monitoring Network (PRMN), September 2017

2.For each target location, the area was divided into 1km² grids. Enumerator teams then visited each grid to verify whether an IDP site was present. By visiting all grids, teams were able to determine the total number of sites in each location.

3.Where KI responses were significantly divergent, these were verified with the respective KIs with a higher reliability accorded to the response provided by the site manager or community leader.



Site Information

Settlement type	Planned site
Estimated number of individuals	3600
Estimated number of households	600
Site capacity reached	Yes
Responsible management agency	No management
Date when most site residents arrived	Dec-02
Site owner	Local authority



Protection

Number of vulnerable households:

Female-headed households	20
Child-headed households	3
Elderly individuals ⁴	100
Unaccompanied children	1
Individuals with a physical disability	15

Presence of shared community space	No
Presence of separate space for women/girls	No
Presence of child friendly space	Yes
Public lighting in the site	No
Type of landownership	Informal
Risk of eviction in next three months	No



WASH

Access to potable water	No
Number of latrines in the site:	
Latrines (mixed)	30
Latrines (male)	0
Latrines (female)	0
Access to handwashing facilities	No



Shelter and Non-Food Items (NFI)

Most common shelter types in the site⁵:

1. Buul
2. CGI
3. N/A

Electricity available in the site	No
Access to a NFI market	No
Average walking time to the nearest NFI market	N/A
Perceived safe access to NFI market	N/A



Displacement

Estimated number of households per displacement group:

IDPs	600
Host community/ non-displaced	0
IDP households arrived in the past 3 months	27

Most common areas of origin:

First area of origin	Togdheer
Second area of origin	Sool
Third area of origin	Sanaag



Food Security

Primary source of food	Market purchase
Food distributions	None
Access to a food market	No



Health and Nutrition

Most common health issue(s) reported in the site:

1. AWD / Cholera
2. Malaria
3. N/A

Access to healthcare services	Yes
Average walking time to the nearest health service	15 minutes
Women give birth in the site	Yes
Access to nutrition services	No
Average walking time to the nearest nutrition service	N/A

Access to nutrition services: No



Education

Education services available	Yes
Average walking time to the nearest school	15 minutes

Education facilities available to residents in the site⁵:

1. Primary
2. Quranic
3. N/A



Communication

Three most trusted sources of information⁵:

1. Religious leader
2. Radio
3. N/A

Most commonly spoken language	Somali Standard
-------------------------------	-----------------

4. More than 60 years old.

5. Key informants could select multiple responses.



Introduction

While an estimated 2.1 million people live in displacement sites in Somalia¹, existing information on exact locations and site level vulnerabilities is sparse, and existing assessments have been ad-hoc and unharmonised, resulting in low comparability and verification.

The Detailed Site Assessment (DSA) was triggered in coordination with the Camp Coordination and Camp Management (CCCM) Cluster in order to provide the humanitarian community with up-to-date information on location of internally displaced persons (IDP) sites, the conditions and capacity of the sites and the humanitarian needs of the residents.

Target locations for assessment were selected based on needs identified by the CCCM Cluster

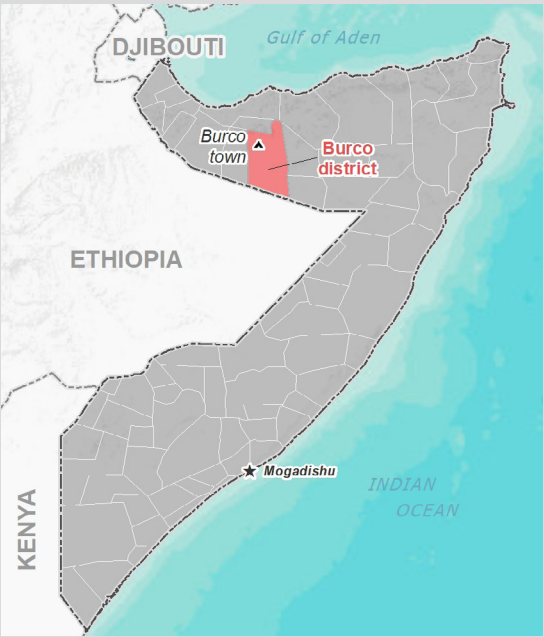
and accessibility for data collection.

A grid pattern approach² was applied during data collection to ensure that all IDP sites in the target area were identified. In each site, two key informant (KI) interviews were conducted: one with the site manager or community leader and one with a women's representative to ensure the perspectives of different groups were captured³. KI responses were aggregated to give one response per question per site.

This factsheet presents a summary of October 1 Site profile along with the needs and priorities of IDPs residing in the site. As the data is captured through KIs, findings should be considered indicative only.

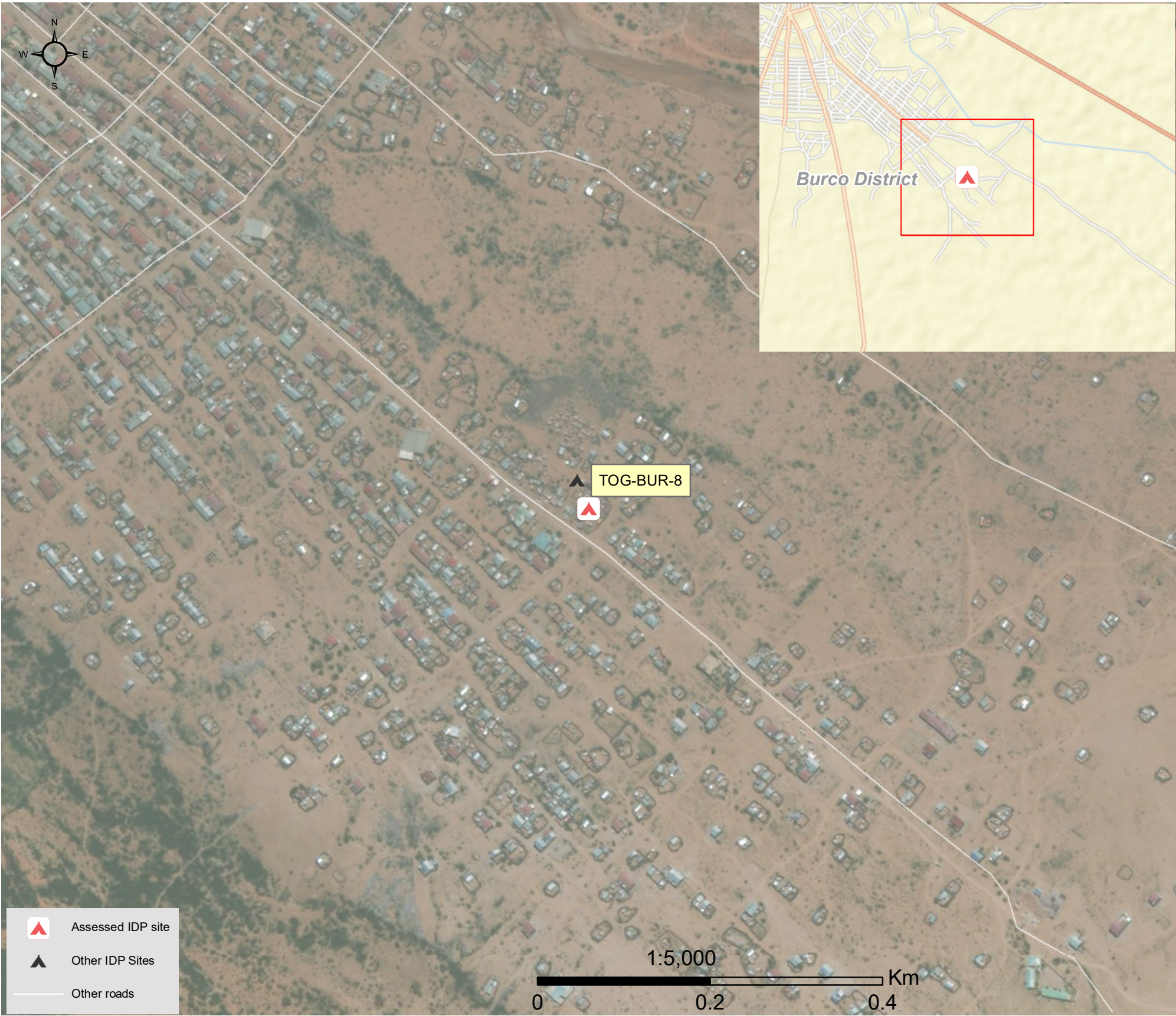
Date assessed: **Nov - 2017**

Location map



Assessed IDP sites in Burco

Coordinates: Lat. 9.503, Long. 45.555



1.United Nations High Commissioner for Refugees (UNHCR): Protection & Return Monitoring Network (PRMN), September 2017

2.For each target location, the area was divided into 1km² grids. Enumerator teams then visited each grid to verify whether an IDP site was present. By visiting all grids, teams were able to determine the total number of sites in each location.

3.Where KI responses were significantly divergent, these were verified with the respective KIs with a higher reliability accorded to the response provided by the site manager or community leader.





Site Information

Settlement type	Spontaneous site
Estimated number of individuals	900
Estimated number of households	150
Site capacity reached	Yes
Responsible management agency	Residents
Date when most site residents arrived	Jun-00
Site owner	Private



Protection

Number of vulnerable households:	
Female-headed households	20
Child-headed households	5
Elderly individuals ⁴	50
Unaccompanied children	20
Individuals with a physical disability	10
Presence of shared community space	No
Presence of separate space for women/girls	Yes
Presence of child friendly space	No
Public lighting in the site	No
Type of landownership	Informal
Risk of eviction in next three months	Yes



WASH

Access to potable water	Yes
Number of latrines in the site:	
Latrines (mixed)	1
Latrines (male)	1
Latrines (female)	1
Access to handwashing facilities	No



Shelter and Non-Food Items (NFI)

Most common shelter types in the site⁵:	
1. Buul	
2. Timber and plastic sheet	
3. N/A	
Electricity available in the site	No
Access to a NFI market	No
Average walking time to the nearest NFI market	N/A
Perceived safe access to NFI market	N/A



Displacement

Estimated number of households per displacement group:	
IDPs	120
Host community/ non-displaced	30
IDP households arrived in the past 3 months	40
Most common areas of origin:	
First area of origin	Sanaag
Second area of origin	Togdheer
Third area of origin	Bari



Food Security

Primary source of food	Market purchase
Food distributions	None
Access to a food market	No



Health and Nutrition

Most common health issue(s) reported in the site:	
1. AWD / Cholera	
2. Other	
3. N/A	
Access to healthcare services	No
Average walking time to the nearest health service	N/A
Women give birth in the site	Yes
Access to nutrition services	Yes
Average walking time to the nearest nutrition service	10 minutes
Access to nutrition services:	Yes



Education

Education services available	No
Average walking time to the nearest school	N/A
Education facilities available to residents in the site⁵:	
1. N/A	
2. N/A	
3. N/A	



Communication

Three most trusted sources of information⁵:	
1. Religious leader	
2. Community leader	
3. Radio	
Most commonly spoken language	Somali Standard

4. More than 60 years old.

5. Key informants could select multiple responses.



Introduction

While an estimated 2.1 million people live in displacement sites in Somalia¹, existing information on exact locations and site level vulnerabilities is sparse, and existing assessments have been ad-hoc and unharmonised, resulting in low comparability and verification.

The Detailed Site Assessment (DSA) was triggered in coordination with the Camp Coordination and Camp Management (CCCM) Cluster in order to provide the humanitarian community with up-to-date information on location of internally displaced persons (IDP) sites, the conditions and capacity of the sites and the humanitarian needs of the residents.

Target locations for assessment were selected based on needs identified by the CCCM Cluster

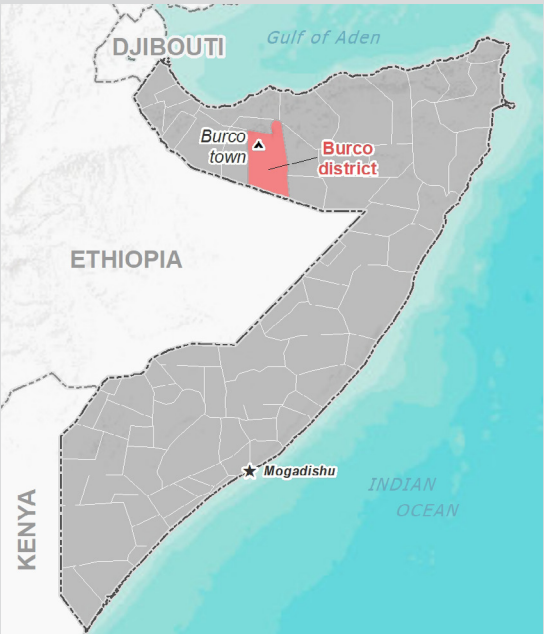
and accessibility for data collection.

A grid pattern approach² was applied during data collection to ensure that all IDP sites in the target area were identified. In each site, two key informant (KI) interviews were conducted: one with the site manager or community leader and one with a women's representative to ensure the perspectives of different groups were captured³. KI responses were aggregated to give one response per question per site.

This factsheet presents a summary of Fifteenmay 1 Site profile along with the needs and priorities of IDPs residing in the site. As the data is captured through KIs, findings should be considered indicative only.

Date assessed: **Nov - 2017**

Location map



Assessed IDP sites in Burco

Coordinates: Lat. 9.507, Long. 45.534



1.United Nations High Commissioner for Refugees (UNHCR): Protection & Return Monitoring Network (PRMN), September 2017

2.For each target location, the area was divided into 1km² grids. Enumerator teams then visited each grid to verify whether an IDP site was present. By visiting all grids, teams were able to determine the total number of sites in each location.

3.Where KI responses were significantly divergent, these were verified with the respective KIs with a higher reliability accorded to the response provided by the site manager or community leader.



Site Information

Settlement type	Spontaneous site
Estimated number of individuals	900
Estimated number of households	150
Site capacity reached	Yes
Responsible management agency	No management
Date when most site residents arrived	Jun-08
Site owner	Private



Protection

Number of vulnerable households:

Female-headed households	3
Child-headed households	1
Elderly individuals ⁴	250
Unaccompanied children	7
Individuals with a physical disability	3

Presence of shared community space	No
Presence of separate space for women/girls	No
Presence of child friendly space	No
Public lighting in the site	No
Type of landownership	Unknown
Risk of eviction in next three months	No



WASH

Access to potable water	Yes
Number of latrines in the site:	
Latrines (mixed)	2
Latrines (male)	0
Latrines (female)	0
Access to handwashing facilities	No



Shelter and Non-Food Items (NFI)

Most common shelter types in the site⁵:

1. Buul	
2. N/A	
3. N/A	
Electricity available in the site	No
Access to a NFI market	No
Average walking time to the nearest NFI market	N/A
Perceived safe access to NFI market	N/A



Displacement

Estimated number of households per displacement group:

IDPs	140
Host community/ non-displaced	10
IDP households arrived in the past 3 months	45

Most common areas of origin:

First area of origin	Bakool
Second area of origin	Banadir
Third area of origin	Middle Juba



Food Security

Primary source of food	Market purchase
Food distributions	None
Access to a food market	No



Health and Nutrition

Most common health issue(s) reported in the site:

1. AWD / Cholera
2. Other
3. N/A

Access to healthcare services	No
Average walking time to the nearest health service	N/A
Women give birth in the site	Yes
Access to nutrition services	No
Average walking time to the nearest nutrition service	N/A

Access to nutrition services: No



Education

Education services available	No
Average walking time to the nearest school	N/A

Education facilities available to residents in the site⁵:

1. N/A
2. N/A
3. N/A



Communication

Three most trusted sources of information⁵:

1. Radio
2. N/A
3. N/A

Most commonly spoken language	Somali Maay
-------------------------------	-------------

4.More than 60 years old.

5.Key informants could select multiple responses.



Introduction

While an estimated 2.1 million people live in displacement sites in Somalia¹, existing information on exact locations and site level vulnerabilities is sparse, and existing assessments have been ad-hoc and unharmonised, resulting in low comparability and verification.

The Detailed Site Assessment (DSA) was triggered in coordination with the Camp Coordination and Camp Management (CCCM) Cluster in order to provide the humanitarian community with up-to-date information on location of internally displaced persons (IDP) sites, the conditions and capacity of the sites and the humanitarian needs of the residents.

Target locations for assessment were selected based on needs identified by the CCCM Cluster

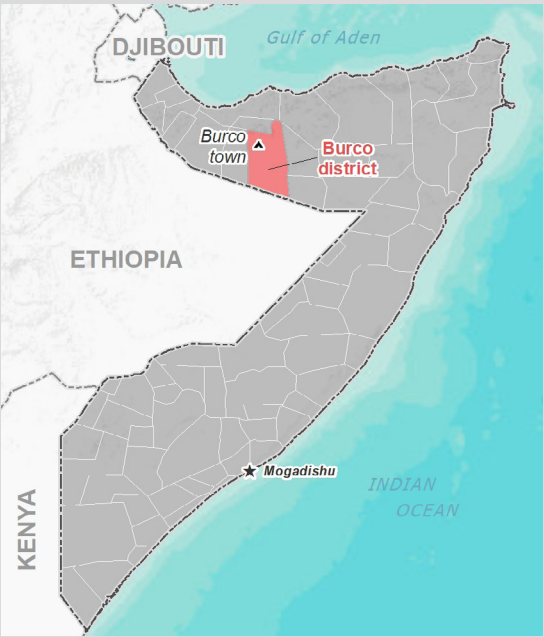
and accessibility for data collection.

A grid pattern approach² was applied during data collection to ensure that all IDP sites in the target area were identified. In each site, two key informant (KI) interviews were conducted: one with the site manager or community leader and one with a women's representative to ensure the perspectives of different groups were captured³. KI responses were aggregated to give one response per question per site.

This factsheet presents a summary of Fifteenmay 2 Site profile along with the needs and priorities of IDPs residing in the site. As the data is captured through KIs, findings should be considered indicative only.

Date assessed: **Nov - 2017**

Location map



Assessed IDP sites in Burco

Coordinates: Lat. 9.505, Long. 45.533



1.United Nations High Commissioner for Refugees (UNHCR): Protection & Return Monitoring Network (PRMN), September 2017

2.For each target location, the area was divided into 1km² grids. Enumerator teams then visited each grid to verify whether an IDP site was present. By visiting all grids, teams were able to determine the total number of sites in each location.

3.Where KI responses were significantly divergent, these were verified with the respective KIs with a higher reliability accorded to the response provided by the site manager or community leader.





Site Information

Settlement type	Spontaneous site
Estimated number of individuals	1080
Estimated number of households	180
Site capacity reached	No
Responsible management agency	No management
Date when most site residents arrived	Dec-03
Site owner	Private



Protection

Number of vulnerable households:	
Female-headed households	4
Child-headed households	0
Elderly individuals ⁴	100
Unaccompanied children	0
Individuals with a physical disability	7
Presence of shared community space	No
Presence of separate space for women/girls	No
Presence of child friendly space	No
Public lighting in the site	No
Type of landownership	None
Risk of eviction in next three months	Yes



WASH

Access to potable water	Yes
Number of latrines in the site:	
Latrines (mixed)	8
Latrines (male)	0
Latrines (female)	0
Access to handwashing facilities	No



Shelter and Non-Food Items (NFI)

Most common shelter types in the site⁵:	
1. Buul	
2. N/A	
3. N/A	
Electricity available in the site	No
Access to a NFI market	No
Average walking time to the nearest NFI market	N/A
Perceived safe access to NFI market	N/A



Displacement

Estimated number of households per displacement group:	
IDPs	180
Host community/ non-displaced	0
IDP households arrived in the past 3 months	2
Most common areas of origin:	
First area of origin	Bakool
Second area of origin	Banadir
Third area of origin	Lower Shabelle



Food Security

Primary source of food	Market purchase
Food distributions	None
Access to a food market	No



Health and Nutrition

Most common health issue(s) reported in the site:	
1. AWD / Cholera	
2. Other	
3. N/A	
Access to healthcare services	No
Average walking time to the nearest health service	N/A
Women give birth in the site	Yes
Access to nutrition services	No
Average walking time to the nearest nutrition service	N/A
Access to nutrition services:	No



Education

Education services available	No
Average walking time to the nearest school	N/A
Education facilities available to residents in the site⁵:	
1. N/A	
2. N/A	
3. N/A	



Communication

Three most trusted sources of information⁵:	
1. TV	
2. Radio	
3. N/A	
Most commonly spoken language	Somali Maay

4.More than 60 years old.

5.Key informants could select multiple responses.



Introduction

While an estimated 2.1 million people live in displacement sites in Somalia¹, existing information on exact locations and site level vulnerabilities is sparse, and existing assessments have been ad-hoc and unharmonised, resulting in low comparability and verification.

The Detailed Site Assessment (DSA) was triggered in coordination with the Camp Coordination and Camp Management (CCCM) Cluster in order to provide the humanitarian community with up-to-date information on location of internally displaced persons (IDP) sites, the conditions and capacity of the sites and the humanitarian needs of the residents.

Target locations for assessment were selected based on needs identified by the CCCM Cluster

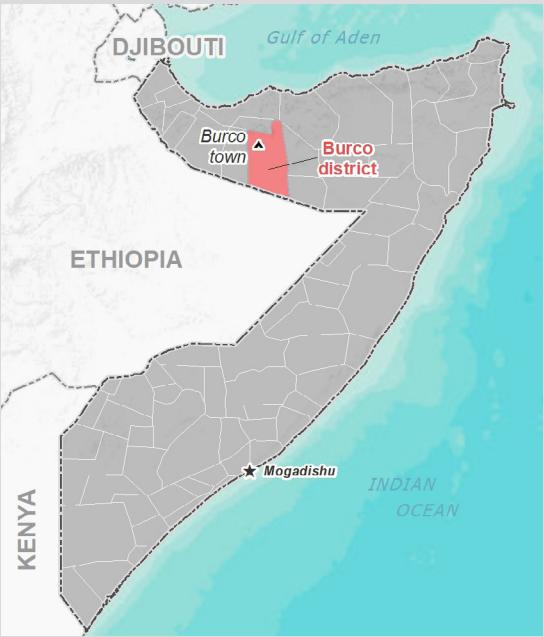
and accessibility for data collection.

A grid pattern approach² was applied during data collection to ensure that all IDP sites in the target area were identified. In each site, two key informant (KI) interviews were conducted: one with the site manager or community leader and one with a women's representative to ensure the perspectives of different groups were captured³. KI responses were aggregated to give one response per question per site.

This factsheet presents a summary of October 2 Site profile along with the needs and priorities of IDPs residing in the site. As the data is captured through KIs, findings should be considered indicative only.

Date assessed: Nov - 2017

Location map



Assessed IDP sites in Burco

Coordinates: Lat. 9.503, Long. 45.555



1.United Nations High Commissioner for Refugees (UNHCR): Protection & Return Monitoring Network (PRMN), September 2017

2.For each target location, the area was divided into 1km² grids. Enumerator teams then visited each grid to verify whether an IDP site was present. By visiting all grids, teams were able to determine the total number of sites in each location.

3.Where KI responses were significantly divergent, these were verified with the respective KIs with a higher reliability accorded to the response provided by the site manager or community leader.



Site Information

Settlement type	Spontaneous site
Estimated number of individuals	600
Estimated number of households	100
Site capacity reached	Yes
Responsible management agency	Residents
Date when most site residents arrived	Oct-00
Site owner	Private



Protection

Number of vulnerable households:	
Female-headed households	10
Child-headed households	3
Elderly individuals ⁴	50
Unaccompanied children	5
Individuals with a physical disability	5
Presence of shared community space	No
Presence of separate space for women/girls	No
Presence of child friendly space	No
Public lighting in the site	No
Type of landownership	Informal
Risk of eviction in next three months	No



WASH

Access to potable water	Yes
Number of latrines in the site:	
Latrines (mixed)	3
Latrines (male)	0
Latrines (female)	0
Access to handwashing facilities	No



Shelter and Non-Food Items (NFIs)

Most common shelter types in the site⁵:	
1. Buul	
2. Timber and plastic sheet	
3. N/A	
Electricity available in the site	No
Access to a NFI market	No
Average walking time to the nearest NFI market	N/A
Perceived safe access to NFI market	N/A



Displacement

Estimated number of households per displacement group:	
IDPs	100
Host community/ non-displaced	0
IDP households arrived in the past 3 months	10
Most common areas of origin:	
First area of origin	Bakool
Second area of origin	Bay
Third area of origin	Banadir



Food Security

Primary source of food	Market purchase
Food distributions	None
Access to a food market	Yes



Health and Nutrition

Most common health issue(s) reported in the site:	
1. None	
2. N/A	
3. N/A	
Access to healthcare services	No
Average walking time to the nearest health service	N/A
Women give birth in the site	Yes
Access to nutrition services	No
Average walking time to the nearest nutrition service	N/A
Access to nutrition services:	No



Education

Education services available	No
Average walking time to the nearest school	N/A
Education facilities available to residents in the site⁵:	
1. N/A	
2. N/A	
3. N/A	



Communication

Three most trusted sources of information⁵:	
1. Religious leader	
2. Community leader	
3. Radio	
Most commonly spoken language	Somali Benaadir

4. More than 60 years old.
5. Key informants could select multiple responses.





Introduction

While an estimated 2.1 million people live in displacement sites in Somalia¹, existing information on exact locations and site level vulnerabilities is sparse, and existing assessments have been ad-hoc and unharmonised, resulting in low comparability and verification.

The Detailed Site Assessment (DSA) was triggered in coordination with the Camp Coordination and Camp Management (CCCM) Cluster in order to provide the humanitarian community with up-to-date information on location of internally displaced persons (IDP) sites, the conditions and capacity of the sites and the humanitarian needs of the residents.

Target locations for assessment were selected based on needs identified by the CCCM Cluster

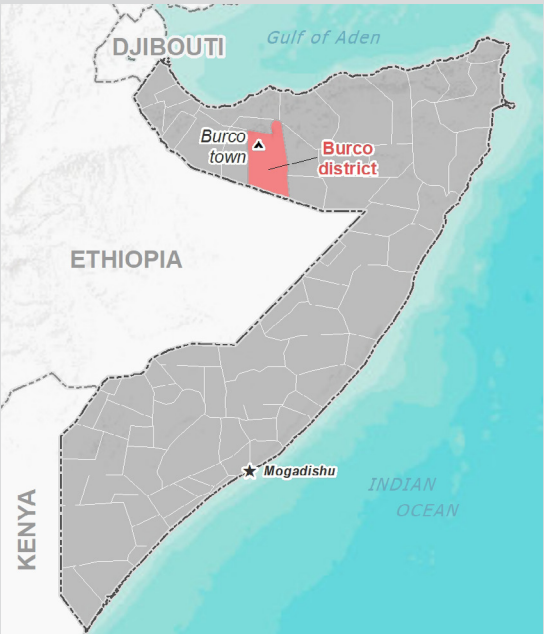
and accessibility for data collection.

A grid pattern approach² was applied during data collection to ensure that all IDP sites in the target area were identified. In each site, two key informant (KI) interviews were conducted: one with the site manager or community leader and one with a women's representative to ensure the perspectives of different groups were captured³. KI responses were aggregated to give one response per question per site.

This factsheet presents a summary of Caqiibo Site profile along with the needs and priorities of IDPs residing in the site. As the data is captured through KIs, findings should be considered indicative only.

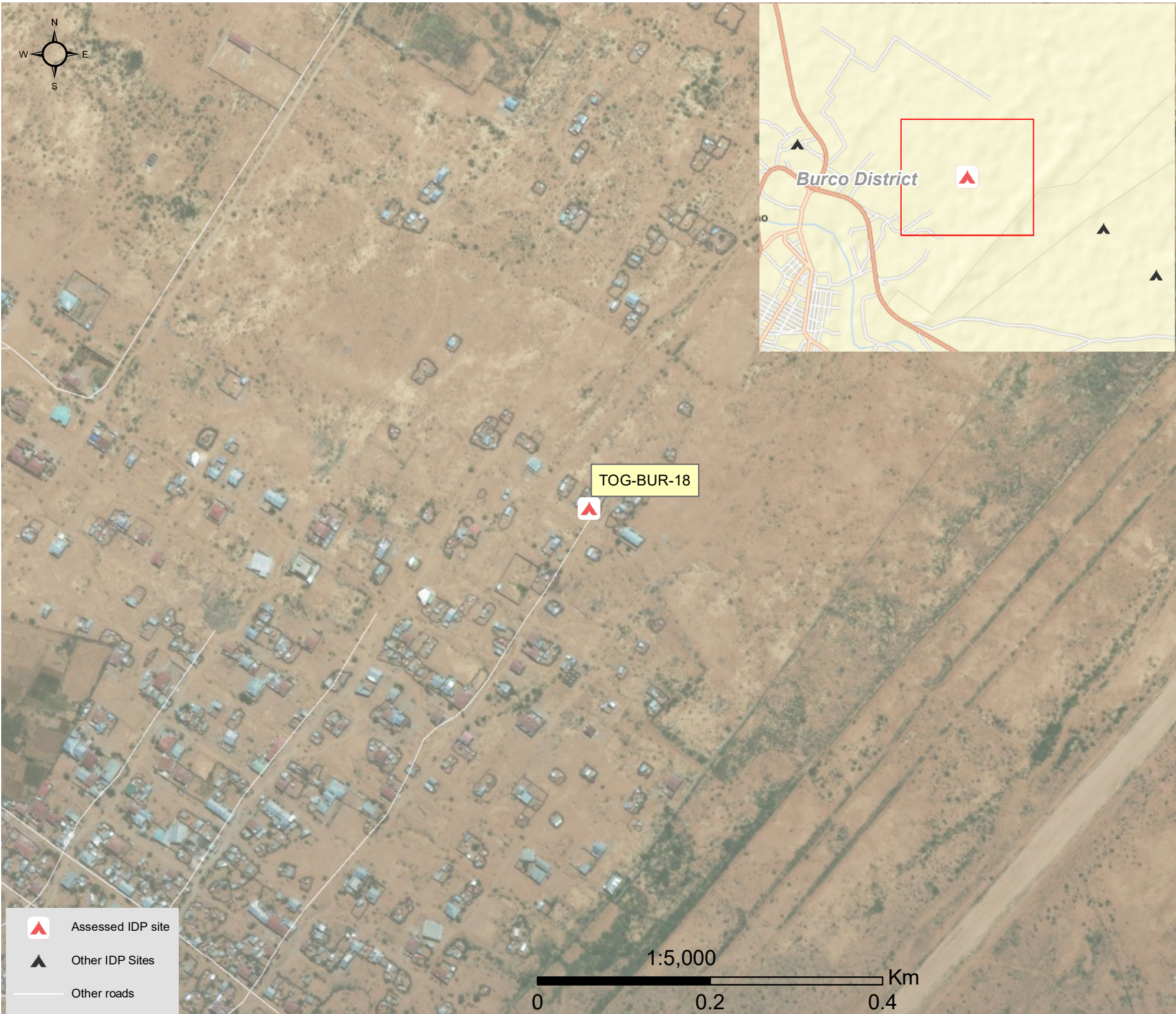
Date assessed: **Nov - 2017**

Location map



Assessed IDP sites in Burco

Coordinates: Lat. 9.534, Long. 45.553



1.United Nations High Commissioner for Refugees (UNHCR): Protection & Return Monitoring Network (PRMN), September 2017

2.For each target location, the area was divided into 1km² grids. Enumerator teams then visited each grid to verify whether an IDP site was present. By visiting all grids, teams were able to determine the total number of sites in each location.

3.Where KI responses were significantly divergent, these were verified with the respective KIs with a higher reliability accorded to the response provided by the site manager or community leader.





Site Information

Settlement type	Spontaneous site
Estimated number of individuals	1320
Estimated number of households	220
Site capacity reached	Yes
Responsible management agency	No management
Date when most site residents arrived	Mar-17
Site owner	Private



Protection

Number of vulnerable households:	
Female-headed households	30
Child-headed households	0
Elderly individuals ⁴	210
Unaccompanied children	0
Individuals with a physical disability	15
Presence of shared community space	No
Presence of separate space for women/girls	No
Presence of child friendly space	No
Public lighting in the site	Yes
Type of landownership	Informal
Risk of eviction in next three months	No



WASH

Access to potable water	No
Number of latrines in the site:	
Latrines (mixed)	30
Latrines (male)	0
Latrines (female)	0
Access to handwashing facilities	No



Shelter and Non-Food Items (NFI)

Most common shelter types in the site⁵:	
1. Buul	
2. CGI	
3. N/A	
Electricity available in the site	Yes
Access to a NFI market	No
Average walking time to the nearest NFI market	N/A
Perceived safe access to NFI market	N/A



Displacement

Estimated number of households per displacement group:	
IDPs	200
Host community/ non-displaced	20
IDP households arrived in the past 3 months	80
Most common areas of origin:	
First area of origin	Togdheer
Second area of origin	Sanaag
Third area of origin	Sool



Food Security

Primary source of food	Market purchase
Food distributions	None
Access to a food market	No



Health and Nutrition

Most common health issue(s) reported in the site:	
1. Malaria	
2. N/A	
3. N/A	
Access to healthcare services	No
Average walking time to the nearest health service	N/A
Women give birth in the site	Yes
Access to nutrition services	No
Average walking time to the nearest nutrition service	N/A
Access to nutrition services:	No



Education

Education services available	No
Average walking time to the nearest school	N/A
Education facilities available to residents in the site⁵:	
1. N/A	
2. N/A	
3. N/A	



Communication

Three most trusted sources of information⁵:	
1. Radio	
2. N/A	
3. N/A	
Most commonly spoken language	Somali Standard

4. More than 60 years old.
5. Key informants could select multiple responses.





Introduction

While an estimated 2.1 million people live in displacement sites in Somalia¹, existing information on exact locations and site level vulnerabilities is sparse, and existing assessments have been ad-hoc and unharmonised, resulting in low comparability and verification.

The Detailed Site Assessment (DSA) was triggered in coordination with the Camp Coordination and Camp Management (CCCM) Cluster in order to provide the humanitarian community with up-to-date information on location of internally displaced persons (IDP) sites, the conditions and capacity of the sites and the humanitarian needs of the residents.

Target locations for assessment were selected based on needs identified by the CCCM Cluster

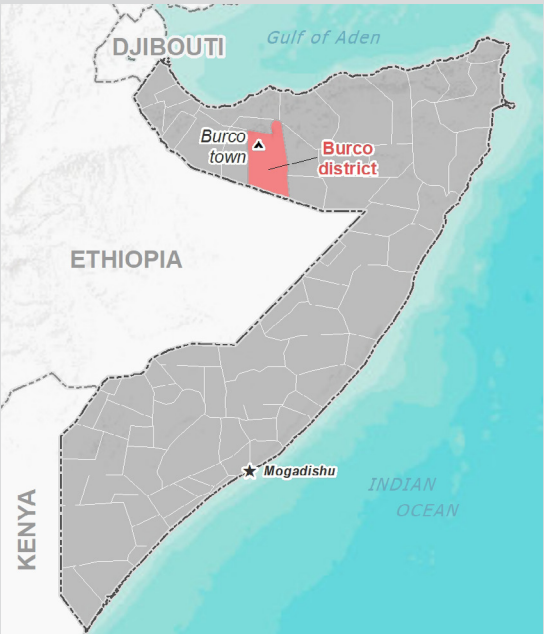
and accessibility for data collection.

A grid pattern approach² was applied during data collection to ensure that all IDP sites in the target area were identified. In each site, two key informant (KI) interviews were conducted: one with the site manager or community leader and one with a women's representative to ensure the perspectives of different groups were captured³. KI responses were aggregated to give one response per question per site.

This factsheet presents a summary of Ood Yar Site profile along with the needs and priorities of IDPs residing in the site. As the data is captured through KIs, findings should be considered indicative only.

Date assessed: Nov - 2017

Location map



Assessed IDP sites in Burco

Coordinates: Lat. 9.51, Long. 45.531



1.United Nations High Commissioner for Refugees (UNHCR): Protection & Return Monitoring Network (PRMN), September 2017

2.For each target location, the area was divided into 1km² grids. Enumerator teams then visited each grid to verify whether an IDP site was present. By visiting all grids, teams were able to determine the total number of sites in each location.

3.Where KI responses were significantly divergent, these were verified with the respective KIs with a higher reliability accorded to the response provided by the site manager or community leader.





Site Information

Settlement type	Spontaneous site
Estimated number of individuals	4000
Estimated number of households	400
Site capacity reached	Yes
Responsible management agency	Local authority
Date when most site residents arrived	Jan-12
Site owner	Private



Protection

Number of vulnerable households:	
Female-headed households	100
Child-headed households	3
Elderly individuals ⁴	1000
Unaccompanied children	0
Individuals with a physical disability	10
Presence of shared community space	Yes
Presence of separate space for women/girls	No
Presence of child friendly space	No
Public lighting in the site	Yes
Type of landownership	Formal
Risk of eviction in next three months	No



WASH

Access to potable water	Yes
Number of latrines in the site:	
Latrines (mixed)	30
Latrines (male)	30
Latrines (female)	0
Access to handwashing facilities	No



Shelter and Non-Food Items (NFI)

Most common shelter types in the site⁵:	
1. Buul	
2. CGI	
3. N/A	
Electricity available in the site	No
Access to a NFI market	No
Average walking time to the nearest NFI market	N/A
Perceived safe access to NFI market	N/A



Displacement

Estimated number of households per displacement group:	
IDPs	200
Host community/ non-displaced	200
IDP households arrived in the past 3 months	100
Most common areas of origin:	
First area of origin	Togdheer
Second area of origin	Sool
Third area of origin	Nugaal



Food Security

Primary source of food	Market purchase
Food distributions	None
Access to a food market	No



Health and Nutrition

Most common health issue(s) reported in the site:	
1. AWD / Cholera	
2. Other	
3. N/A	
Access to healthcare services	No
Average walking time to the nearest health service	N/A
Women give birth in the site	Yes
Access to nutrition services	No
Average walking time to the nearest nutrition service	N/A
Access to nutrition services:	No



Education

Education services available	No
Average walking time to the nearest school	N/A
Education facilities available to residents in the site⁵:	
1. N/A	
2. N/A	
3. N/A	



Communication

Three most trusted sources of information⁵:	
1. Friends, neighbours and family	
2. Radio	
3. N/A	
Most commonly spoken language	Somali Standard

4. More than 60 years old.
5. Key informants could select multiple responses.





Introduction

While an estimated 2.1 million people live in displacement sites in Somalia¹, existing information on exact locations and site level vulnerabilities is sparse, and existing assessments have been ad-hoc and unharmonised, resulting in low comparability and verification.

The Detailed Site Assessment (DSA) was triggered in coordination with the Camp Coordination and Camp Management (CCCM) Cluster in order to provide the humanitarian community with up-to-date information on location of internally displaced persons (IDP) sites, the conditions and capacity of the sites and the humanitarian needs of the residents.

Target locations for assessment were selected based on needs identified by the CCCM Cluster

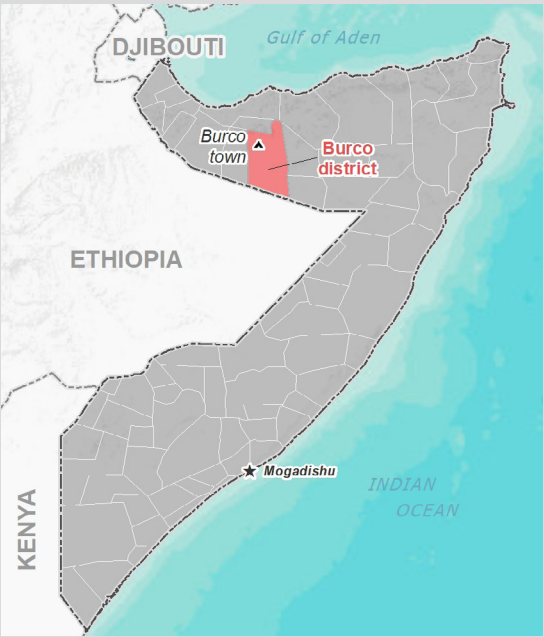
and accessibility for data collection.

A grid pattern approach² was applied during data collection to ensure that all IDP sites in the target area were identified. In each site, two key informant (KI) interviews were conducted: one with the site manager or community leader and one with a women's representative to ensure the perspectives of different groups were captured³. KI responses were aggregated to give one response per question per site.

This factsheet presents a summary of Alle Aa minutes Site profile along with the needs and priorities of IDPs residing in the site. As the data is captured through KIs, findings should be considered indicative only.

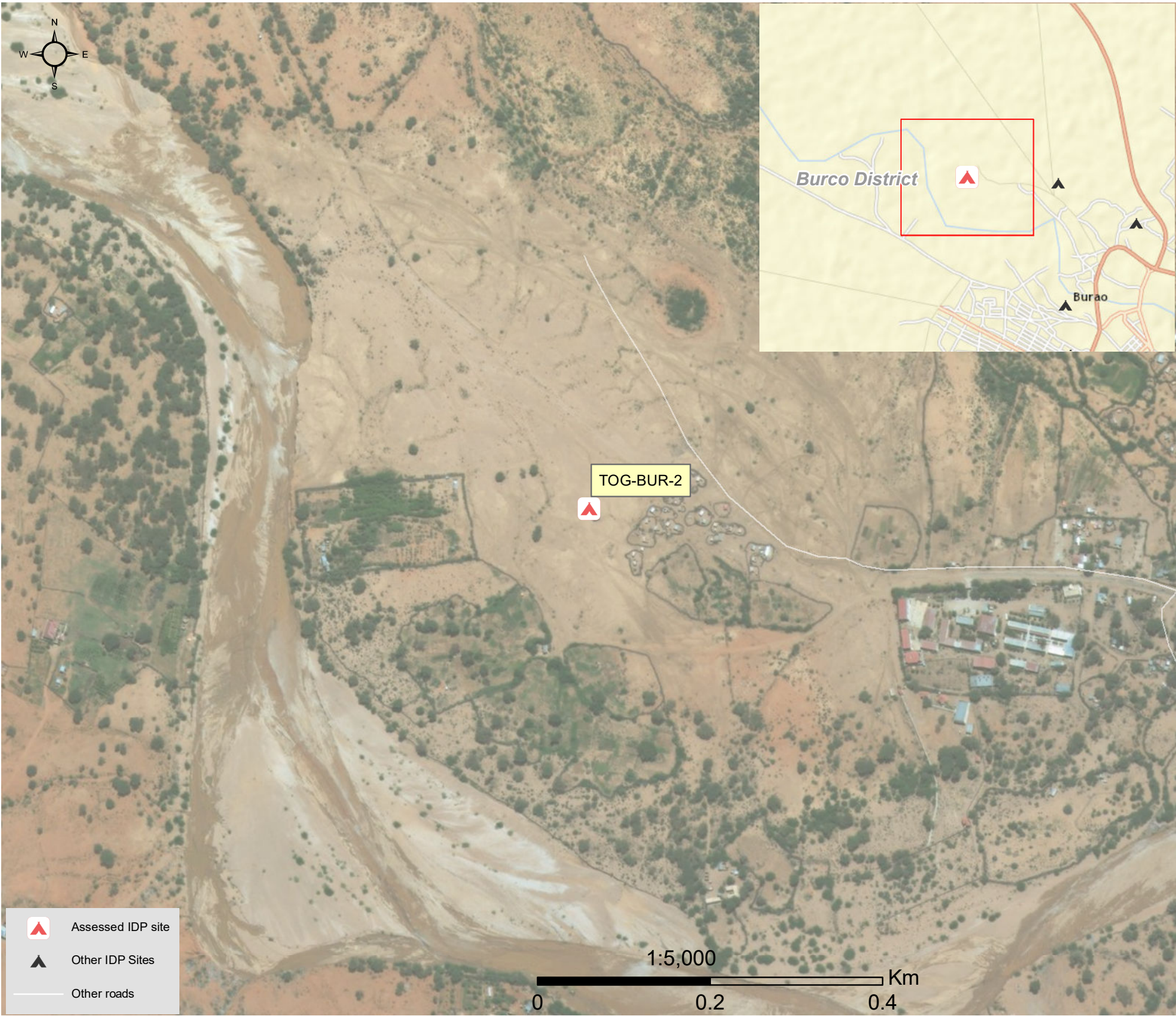
Date assessed: **Nov - 2017**

Location map



Assessed IDP sites in Burco

Coordinates: Lat. 9.542, Long. 45.522



1.United Nations High Commissioner for Refugees (UNHCR): Protection & Return Monitoring Network (PRMN), September 2017

2.For each target location, the area was divided into 1km² grids. Enumerator teams then visited each grid to verify whether an IDP site was present. By visiting all grids, teams were able to determine the total number of sites in each location.

3.Where KI responses were significantly divergent, these were verified with the respective KIs with a higher reliability accorded to the response provided by the site manager or community leader.





Site Information

Settlement type	Spontaneous site
Estimated number of individuals	1200
Estimated number of households	200
Site capacity reached	No
Responsible management agency	Residents
Date when most site residents arrived	Jun-17
Site owner	Private



Protection

Number of vulnerable households:	
Female-headed households	4
Child-headed households	0
Elderly individuals ⁴	100
Unaccompanied children	0
Individuals with a physical disability	3
Presence of shared community space	No
Presence of separate space for women/girls	No
Presence of child friendly space	No
Public lighting in the site	No
Type of landownership	Formal
Risk of eviction in next three months	No



WASH

Access to potable water	Yes
Number of latrines in the site:	
Latrines (mixed)	2
Latrines (male)	0
Latrines (female)	0
Access to handwashing facilities	No



Shelter and Non-Food Items (NFI)

Most common shelter types in the site⁵:	
1. Buul	
2. Timber and plastic sheet	
3. N/A	
Electricity available in the site	No
Access to a NFI market	No
Average walking time to the nearest NFI market	N/A
Perceived safe access to NFI market	N/A



Displacement

Estimated number of households per displacement group:	
IDPs	180
Host community/ non-displaced	20
IDP households arrived in the past 3 months	1
Most common areas of origin:	
First area of origin	Togdheer
Second area of origin	Bari
Third area of origin	Sool



Food Security

Primary source of food	Market purchase
Food distributions	None
Access to a food market	No



Health and Nutrition

Most common health issue(s) reported in the site:	
1. Malaria	
2. N/A	
3. N/A	
Access to healthcare services	No
Average walking time to the nearest health service	N/A
Women give birth in the site	Yes
Access to nutrition services	No
Average walking time to the nearest nutrition service	N/A
Access to nutrition services:	No



Education

Education services available	No
Average walking time to the nearest school	N/A
Education facilities available to residents in the site⁵:	
1. N/A	
2. N/A	
3. N/A	



Communication

Three most trusted sources of information⁵:	
1. Religious leader	
2. Community leader	
3. Radio	
Most commonly spoken language	Somali Standard

4.More than 60 years old.

5.Key informants could select multiple responses.

Introduction

While an estimated 2.1 million people live in displacement sites in Somalia¹, existing information on exact locations and site level vulnerabilities is sparse, and existing assessments have been ad-hoc and unharmonised, resulting in low comparability and verification.

The Detailed Site Assessment (DSA) was triggered in coordination with the Camp Coordination and Camp Management (CCCM) Cluster in order to provide the humanitarian community with up-to-date information on location of internally displaced persons (IDP) sites, the conditions and capacity of the sites and the humanitarian needs of the residents.

Target locations for assessment were selected based on needs identified by the CCCM Cluster

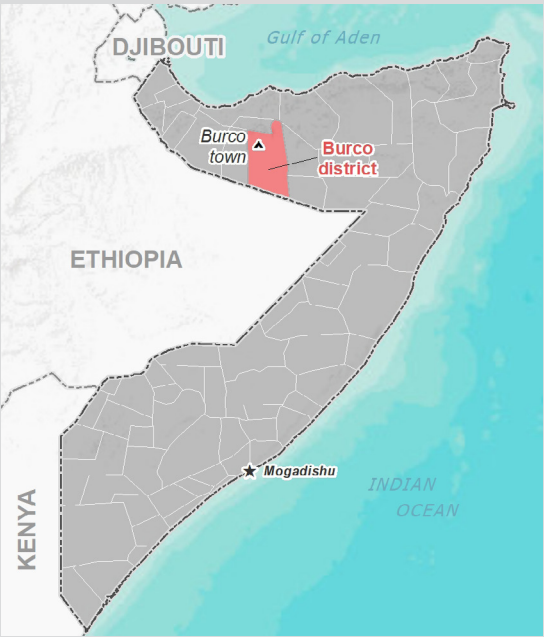
and accessibility for data collection.

A grid pattern approach² was applied during data collection to ensure that all IDP sites in the target area were identified. In each site, two key informant (KI) interviews were conducted: one with the site manager or community leader and one with a women's representative to ensure the perspectives of different groups were captured³. KI responses were aggregated to give one response per question per site.

This factsheet presents a summary of Samir Iyo Imaan Site profile along with the needs and priorities of IDPs residing in the site. As the data is captured through KIs, findings should be considered indicative only.

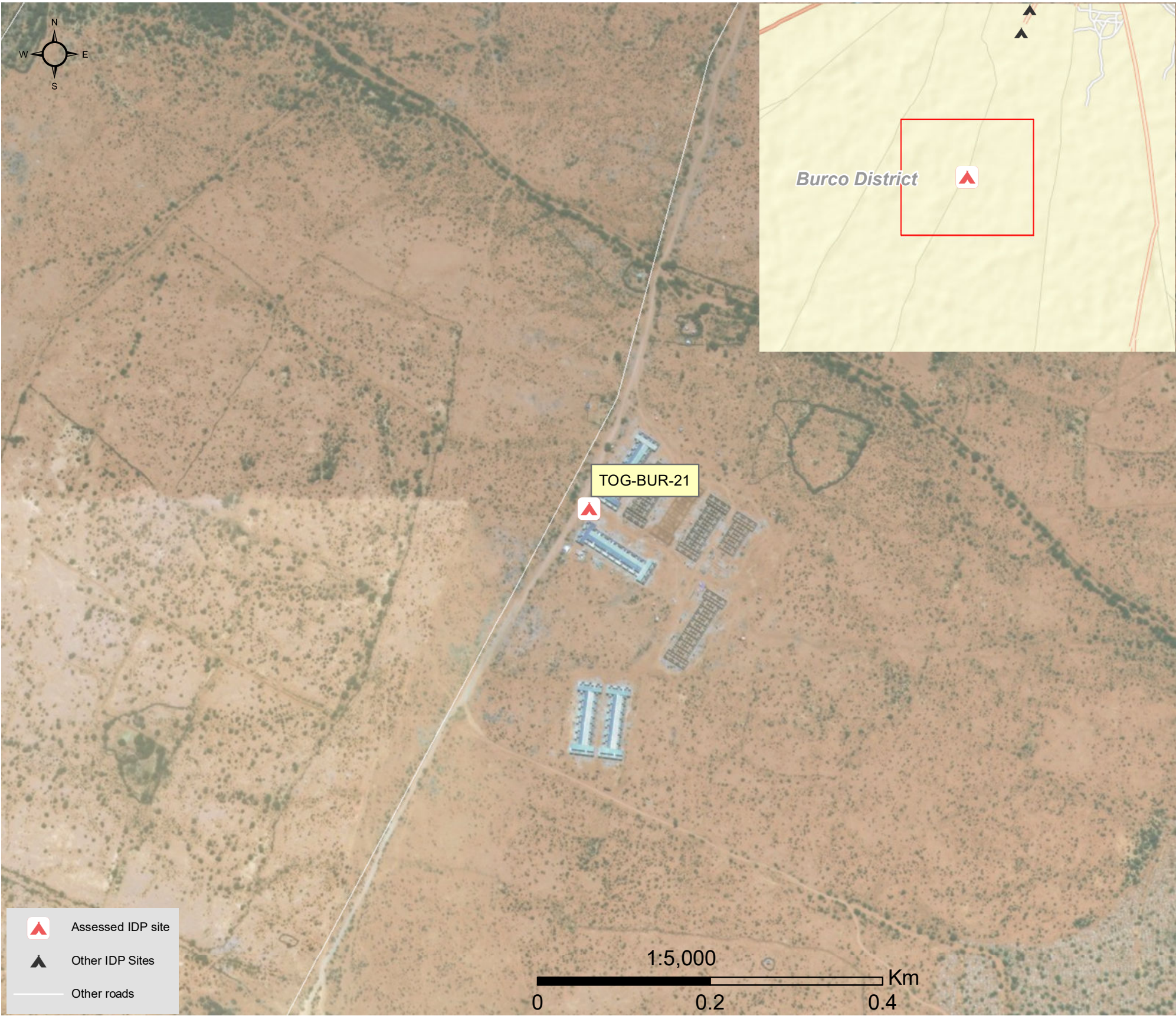
Date assessed: **Nov - 2017**

Location map



Assessed IDP sites in Burco

Coordinates: Lat. 9.492, Long. 45.528



1.United Nations High Commissioner for Refugees (UNHCR): Protection & Return Monitoring Network (PRMN), September 2017

2.For each target location, the area was divided into 1km² grids. Enumerator teams then visited each grid to verify whether an IDP site was present. By visiting all grids, teams were able to determine the total number of sites in each location.

3.Where KI responses were significantly divergent, these were verified with the respective KIs with a higher reliability accorded to the response provided by the site manager or community leader.



Site Information

Settlement type	Planned site
Estimated number of individuals	1140
Estimated number of households	190
Site capacity reached	No
Responsible management agency	Local authority
Date when most site residents arrived	Jul-16
Site owner	Local authority



Protection

Number of vulnerable households:	
Female-headed households	50
Child-headed households	0
Elderly individuals ⁴	340
Unaccompanied children	0
Individuals with a physical disability	2
Presence of shared community space	No
Presence of separate space for women/girls	No
Presence of child friendly space	No
Public lighting in the site	Yes
Type of landownership	Informal
Risk of eviction in next three months	No



WASH

Access to potable water	No
Number of latrines in the site:	
Latrines (mixed)	35
Latrines (male)	0
Latrines (female)	0
Access to handwashing facilities	No



Shelter and Non-Food Items (NFI)

Most common shelter types in the site⁵:	
1. Brick	
2. Stone	
3. N/A	
Electricity available in the site	Yes
Access to a NFI market	No
Average walking time to the nearest NFI market	N/A
Perceived safe access to NFI market	N/A



Displacement

Estimated number of households per displacement group:	
IDPs	150
Host community/ non-displaced	40
IDP households arrived in the past 3 months	50
Most common areas of origin:	
First area of origin	Togdheer
Second area of origin	Sool
Third area of origin	Sanaag



Food Security

Primary source of food	Market purchase
Food distributions	None
Access to a food market	No



Health and Nutrition

Most common health issue(s) reported in the site:	
1. AWD / Cholera	
2. Malaria	
3. N/A	
Access to healthcare services	No
Average walking time to the nearest health service	N/A
Women give birth in the site	Yes
Access to nutrition services	No
Average walking time to the nearest nutrition service	N/A
Access to nutrition services:	No



Education

Education services available	No
Average walking time to the nearest school	N/A
Education facilities available to residents in the site⁵:	
1. N/A	
2. N/A	
3. N/A	



Communication

Three most trusted sources of information⁵:	
1. Friends, neighbours and family	
2. TV	
3. Radio	
Most commonly spoken language	Somali Standard

4.More than 60 years old.

5.Key informants could select multiple responses.

Introduction

While an estimated 2.1 million people live in displacement sites in Somalia¹, existing information on exact locations and site level vulnerabilities is sparse, and existing assessments have been ad-hoc and unharmonised, resulting in low comparability and verification.

The Detailed Site Assessment (DSA) was triggered in coordination with the Camp Coordination and Camp Management (CCCM) Cluster in order to provide the humanitarian community with up-to-date information on location of internally displaced persons (IDP) sites, the conditions and capacity of the sites and the humanitarian needs of the residents.

Target locations for assessment were selected based on needs identified by the CCCM Cluster

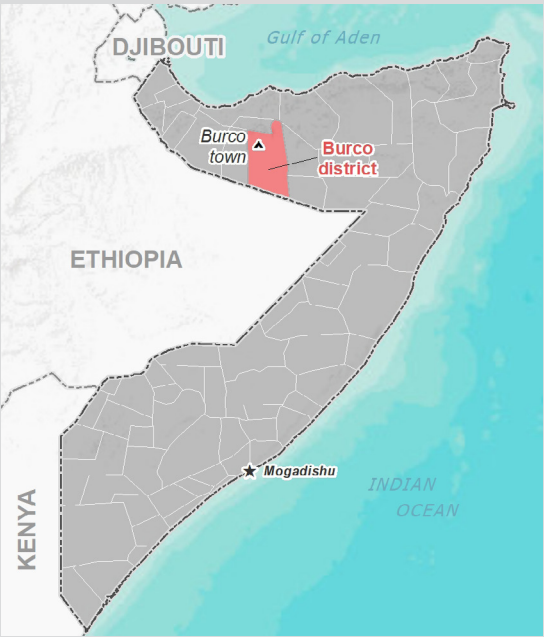
and accessibility for data collection.

A grid pattern approach² was applied during data collection to ensure that all IDP sites in the target area were identified. In each site, two key informant (KI) interviews were conducted: one with the site manager or community leader and one with a women's representative to ensure the perspectives of different groups were captured³. KI responses were aggregated to give one response per question per site.

This factsheet presents a summary of Murug Maal Site profile along with the needs and priorities of IDPs residing in the site. As the data is captured through KIs, findings should be considered indicative only.

Date assessed: **Nov - 2017**

Location map



Assessed IDP sites in Burco

Coordinates: Lat. 9.541, Long. 45.531



1.United Nations High Commissioner for Refugees (UNHCR): Protection & Return Monitoring Network (PRMN), September 2017

2.For each target location, the area was divided into 1km² grids. Enumerator teams then visited each grid to verify whether an IDP site was present. By visiting all grids, teams were able to determine the total number of sites in each location.

3.Where KI responses were significantly divergent, these were verified with the respective KIs with a higher reliability accorded to the response provided by the site manager or community leader.



Site Information

Settlement type	Spontaneous site
Estimated number of individuals	1800
Estimated number of households	300
Site capacity reached	No
Responsible management agency	No management
Date when most site residents arrived	Sep-00
Site owner	Private



Protection

Number of vulnerable households:

Female-headed households	30
Child-headed households	0
Elderly individuals ⁴	500
Unaccompanied children	0
Individuals with a physical disability	5
Presence of shared community space	No
Presence of separate space for women/girls	No
Presence of child friendly space	No
Public lighting in the site	No
Type of landownership	Informal
Risk of eviction in next three months	No



WASH

Access to potable water	No
Number of latrines in the site:	
Latrines (mixed)	38
Latrines (male)	0
Latrines (female)	0
Access to handwashing facilities	No



Shelter and Non-Food Items (NFI)

Most common shelter types in the site⁵:

1. CGI	
2. N/A	
3. N/A	
Electricity available in the site	No
Access to a NFI market	No
Average walking time to the nearest NFI market	N/A
Perceived safe access to NFI market	N/A



Displacement

Estimated number of households per displacement group:

IDPs	300
Host community/ non-displaced	0
IDP households arrived in the past 3 months	28

Most common areas of origin:

First area of origin	Togdheer
Second area of origin	Sanaag
Third area of origin	Sool



Food Security

Primary source of food	Household production
Food distributions	None
Access to a food market	No



Health and Nutrition

Most common health issue(s) reported in the site:

1. None
2. N/A
3. N/A

Access to healthcare services	No
Average walking time to the nearest health service	N/A
Women give birth in the site	Yes
Access to nutrition services	No
Average walking time to the nearest nutrition service	N/A

Access to nutrition services: No



Education

Education services available	No
Average walking time to the nearest school	N/A

Education facilities available to residents in the site⁵:

1. N/A
2. N/A
3. N/A



Communication

Three most trusted sources of information⁵:

1. TV
2. Radio
3. N/A

Most commonly spoken language	Somali Standard
-------------------------------	-----------------

4.More than 60 years old.

5.Key informants could select multiple responses.