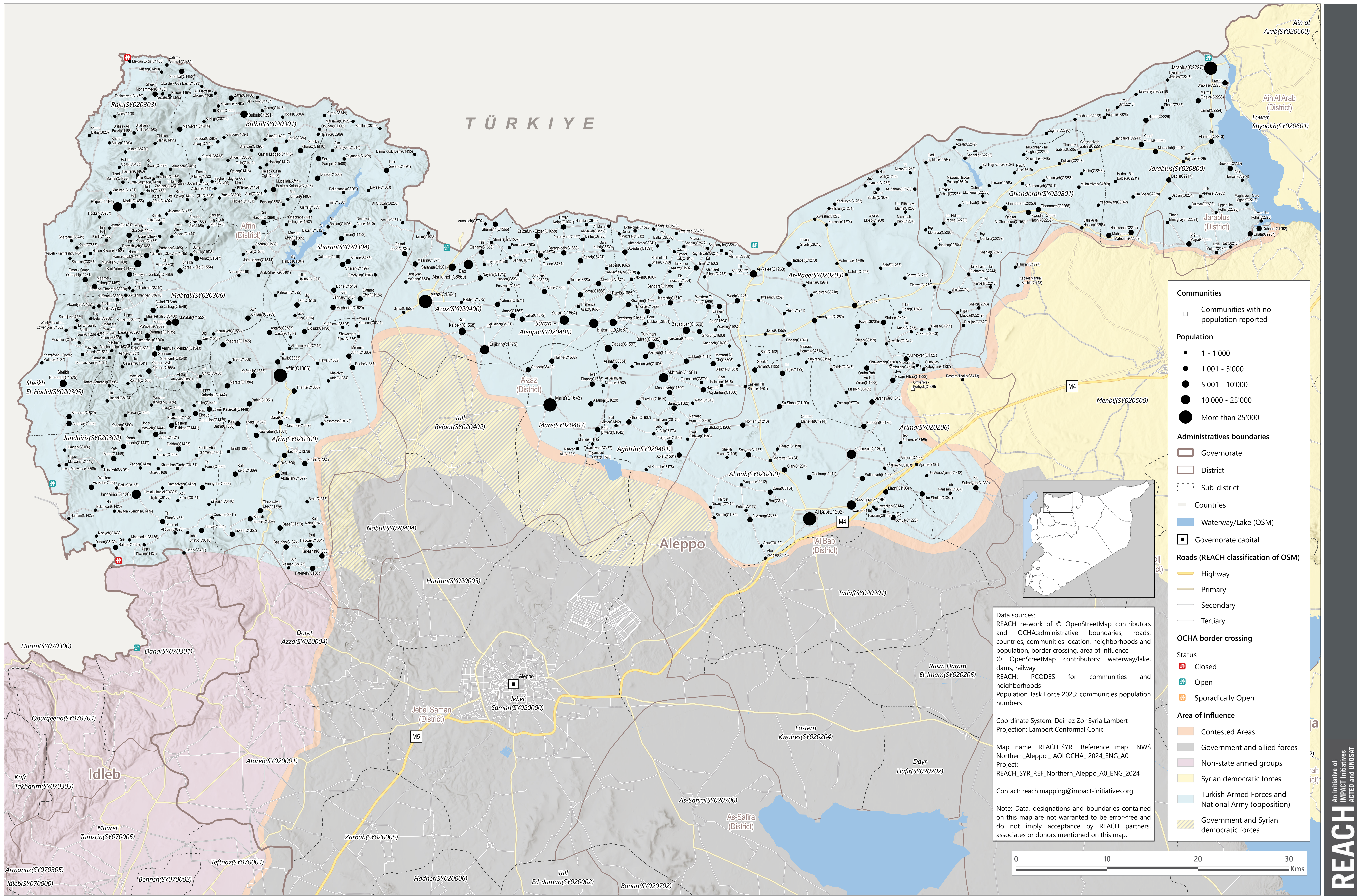


Syrian Arab Republic - Northwest Syria (NWS) - Northern Aleppo

Reference map - May 2024

For humanitarian purpose only
Production date : 22 May 2024



Communities

- Communities with no population reported

Population

- 1 - 1'000
- 1'001 - 5'000
- 5'001 - 10'000
- 10'000 - 25'000
- More than 25'000

Administratives boundaries

- ▭ Governorate
- ▭ District
- ▭ Sub-district
- ▭ Countries
- ▭ Waterway/Lake (OSM)
- ▭ Governorate capital

Roads (REACH classification of OSM)

- ▭ Highway
- ▭ Primary
- ▭ Secondary
- ▭ Tertiary

OCHA border crossing

- ▭ Status
- ▭ Closed
- ▭ Open
- ▭ Sporadically Open

Area of Influence

- ▭ Contested Areas
- ▭ Government and allied forces
- ▭ Non-state armed groups
- ▭ Syrian democratic forces
- ▭ Turkish Armed Forces and National Army (Operation)
- ▭ Government and Syrian democratic forces

Data sources:
REACH re-work of © OpenStreetMap contributors and OCHA: administrative boundaries, roads, countries, communities location, neighborhoods and population, border crossing, area of influence
© OpenStreetMap contributors: waterway/lake, dams, railway
REACH: PCODES for communities and neighborhoods
Population Task Force 2023: communities population numbers.

Coordinate System: Deir ez Zor Syria Lambert
Projection: Lambert Conformal Conic

Map name: REACH_SYR_Reference map_NWS Northern_Aleppo_AOI OCHA_2024_ENG_A0
Project: REACH_SYR_REF_Northern_Aleppo_A0_ENG_2024

Contact: reach.mapping@impact-initiatives.org

Note: Data, designations and boundaries contained on this map are not warranted to be error-free and do not imply acceptance by REACH partners, associates or donors mentioned on this map.

