

Summary

This profile provides a quarterly overview of the humanitarian situation in Pamir camp, including general infrastructure, WASH infrastructure and water access. Information on the camp overview and demographics was provided by UNHCR, while NGOs provided information on services. REACH collected GPS data points between 1 and 31 July, 2018 to create the maps. A profile for Ajuong Thok accompanies this profile.

Camp overview¹

of individuals: 32,168

of households: 7,041

Date opened: 30/03/2013

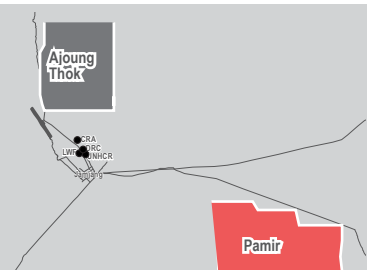
Ongoing extension: yes

Planned capacity (individuals): 55,000

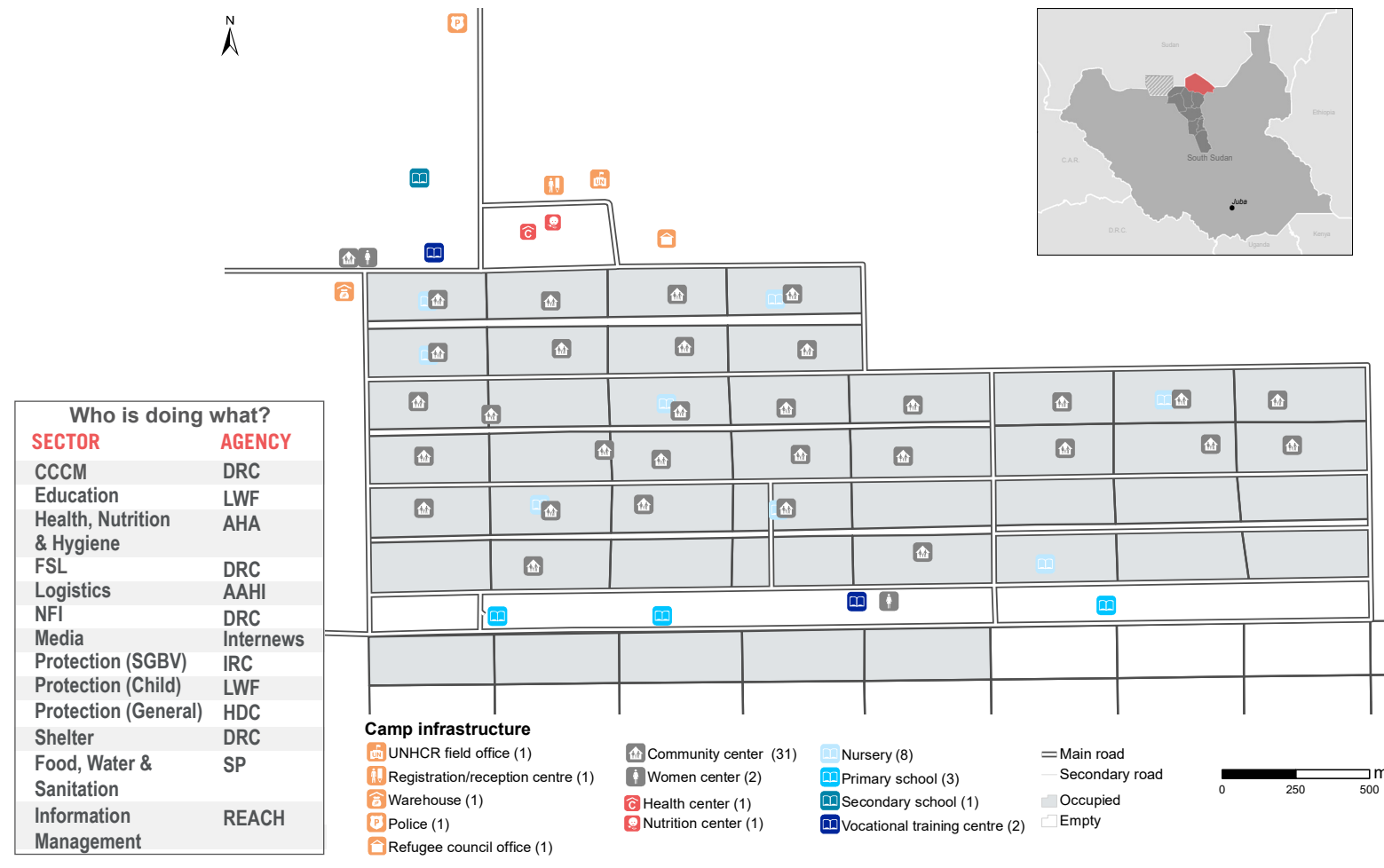
Demographics²

44% male / 56% female	
1% Over 60	1%
13% 18 - 59	25%
7% 12 - 17	7%
12% 5 - 11	12%
11% 0 - 4	11%

Location map



Pamir general infrastructure



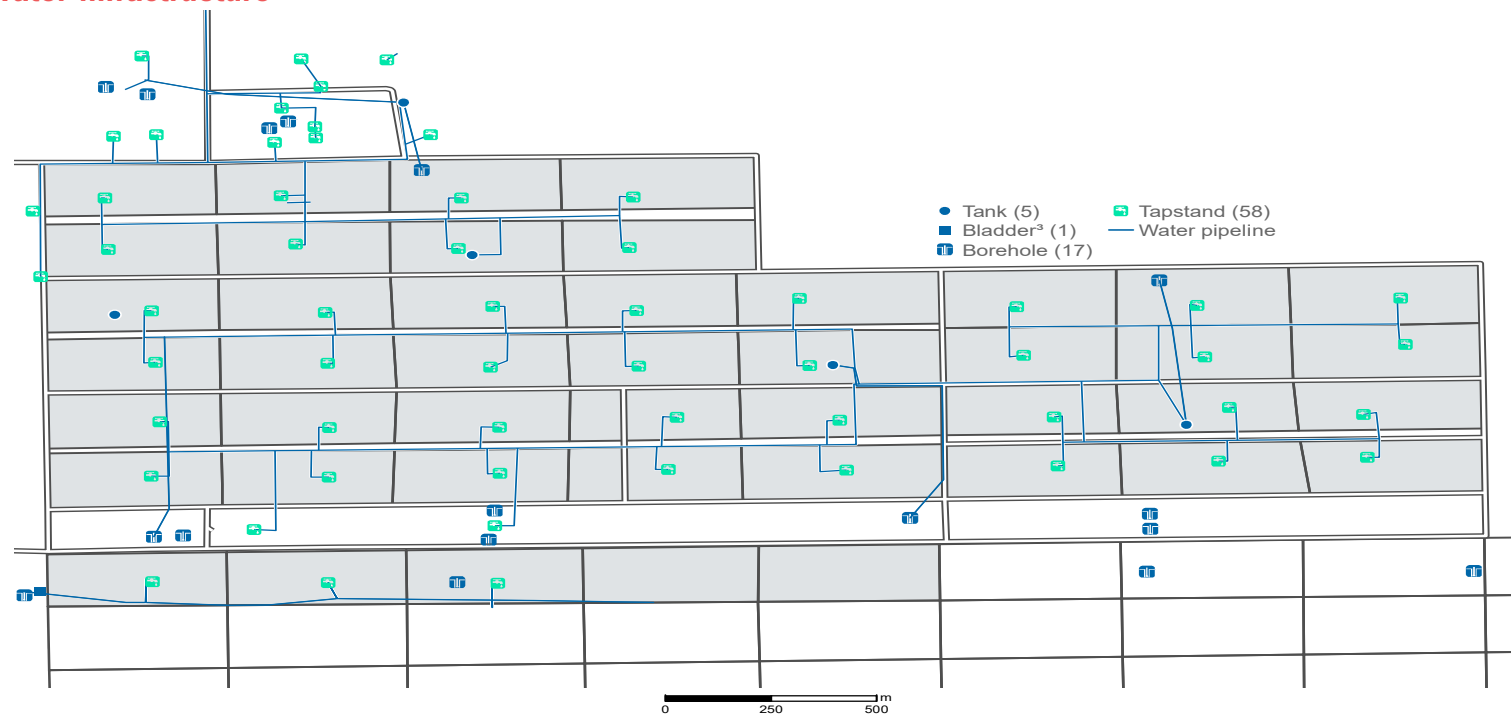
Monthly feature of services

Structure	Run by	Main activities	Beneficiaries
Women and Girls Wellness Centre	IRC	Case management and psychosocial support, adolescent girls learning sessions and GBV community outreach activities	Women and girls, including SGBV survivors, vulnerable women and adolescent girls
Child Friendly Space	LWF	Early Development Centre services, pre-school education, child friendly space, youth recreation activities	Children and youth aged 3-17 years
Livelihood Learning Centre	IRC	Trainings for farmers and entrepreneurs, space for community meetings	Youth and adult community members
Program Site	IRC	Complaint, feedback and response mechanisms about IRC programs, facilitation of stakeholders reference group meetings, community dialogues	Diverse community members; including women , youth and community leaders
Nutrition Centre	AHA	Distribution of supplementary feeding program (BSFP) and commodities	Children under five and pregnant/ lactating women



Camp profile - Pamir

Water infrastructure



Water access description

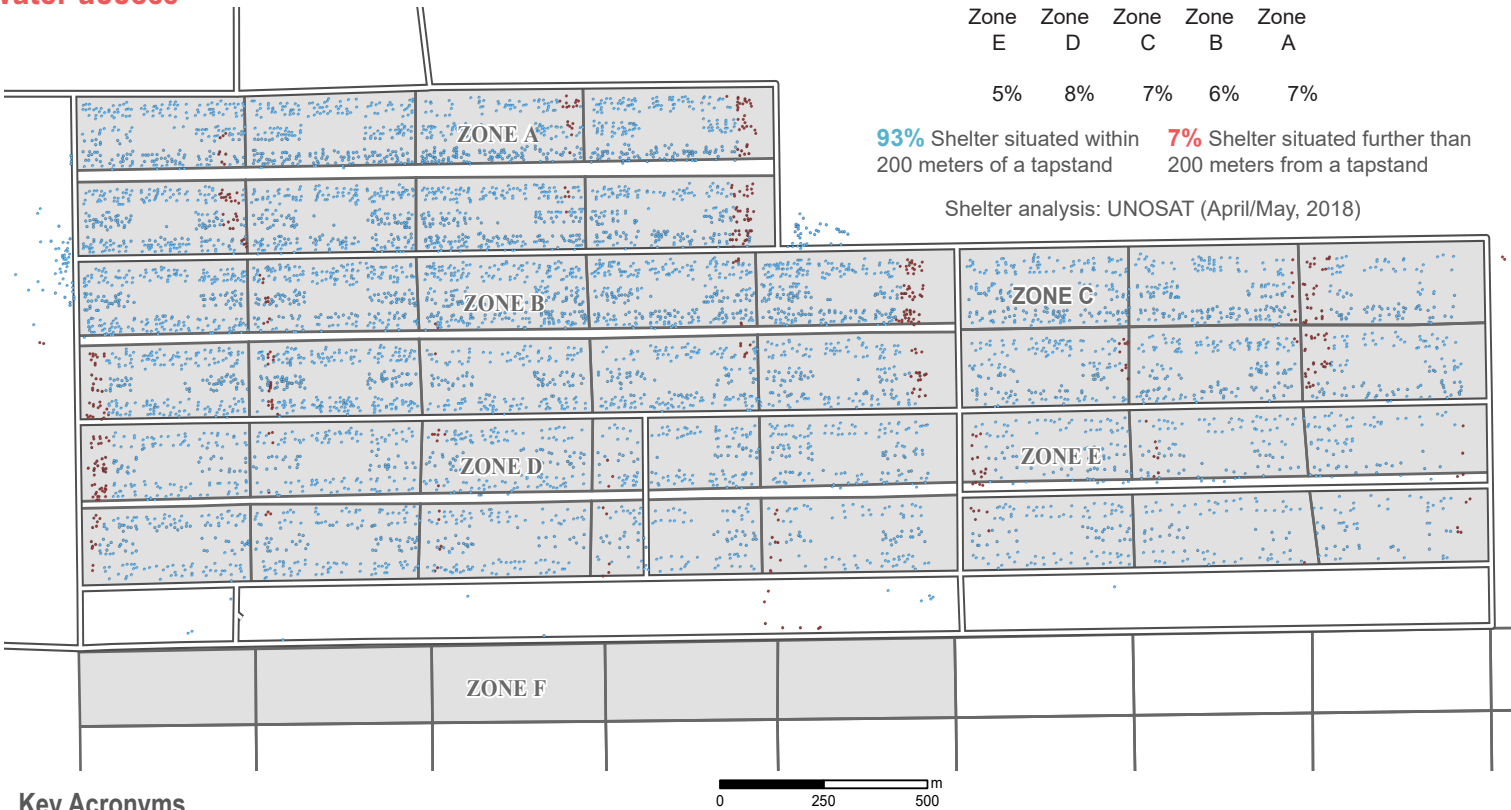
% of shelters situated more than 200 meters from a tapstand per zone

Zone E	Zone D	Zone C	Zone B	Zone A
5%	8%	7%	6%	7%

93% Shelter situated within 200 meters of a tapstand **7%** Shelter situated further than 200 meters from a tapstand

Shelter analysis: UNOSAT (April/May, 2018)

Water access



Key Acronyms

CCCM	Camp Coordination and Camp Management
CFS	Child Friendly Space
ERD	Economic Recovery and Development
FSL	Food Security and Livelihoods
GPS	Global Positioning System
HDC	Humanitarian Development Consortium
NFI	Non-Food Items
SGBV	Sexual and Gender-based Violence
WASH	Water, Sanitation and Hygiene

Footnotes

- 1 Camp overview data provided by UNHCR Jamjang Sub Office
- 2 Demographics data provided by UNHCR Jamjang Sub Office
- 3 Bladder: resistant, flexible, and mobile water container used in the camps to store water
- 4 Water distribution point is defined here as a tap stand or hand pump