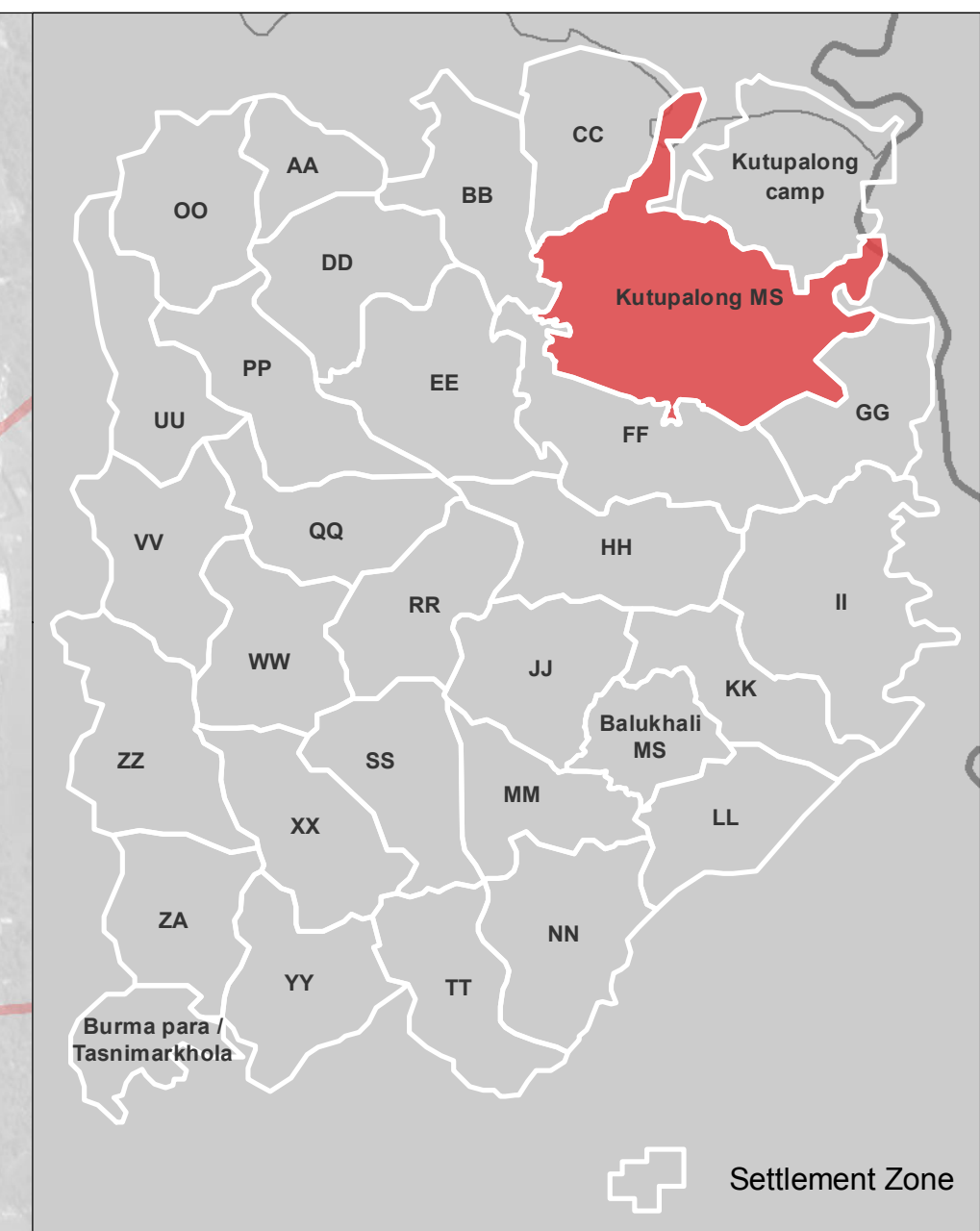
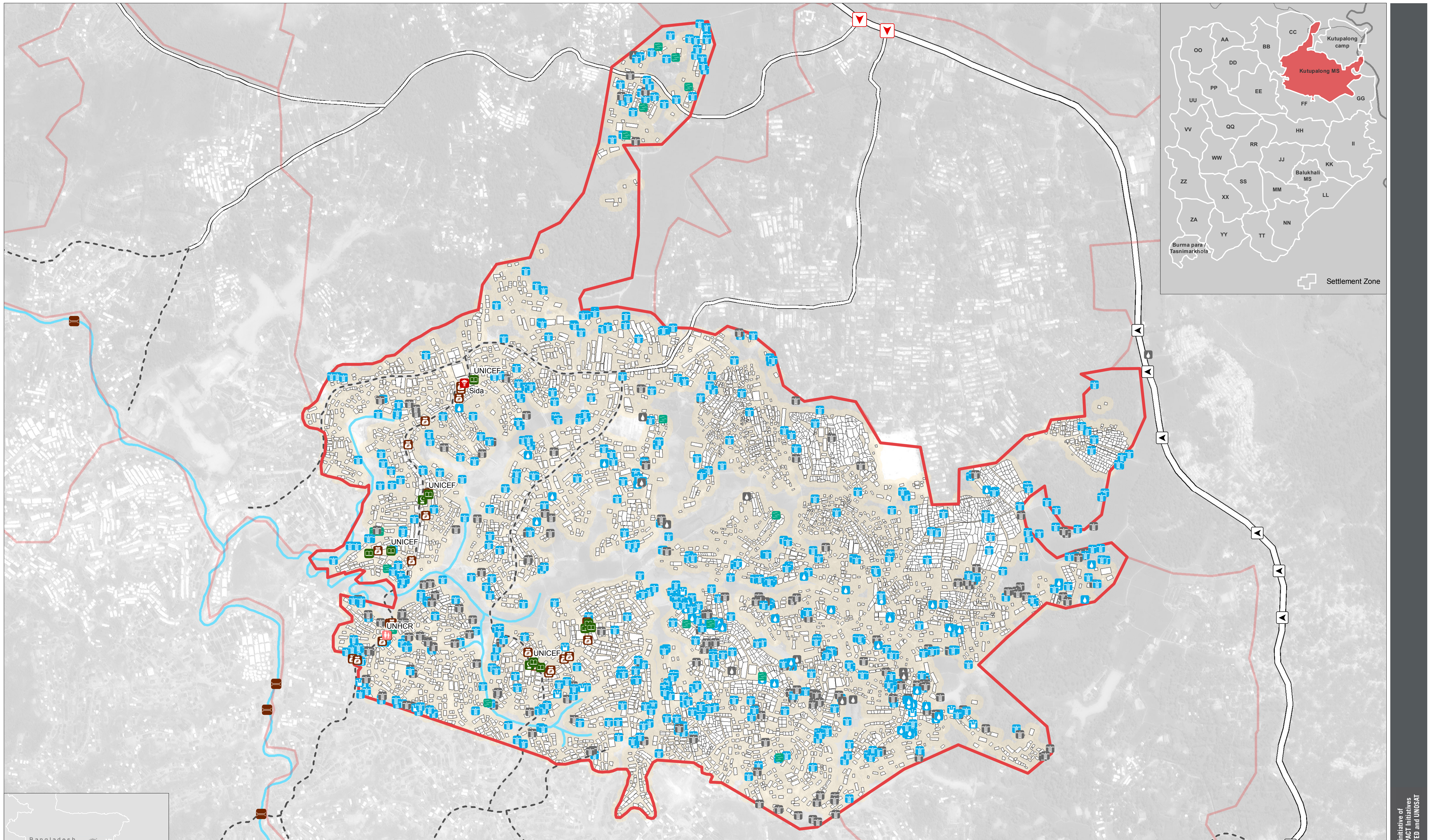
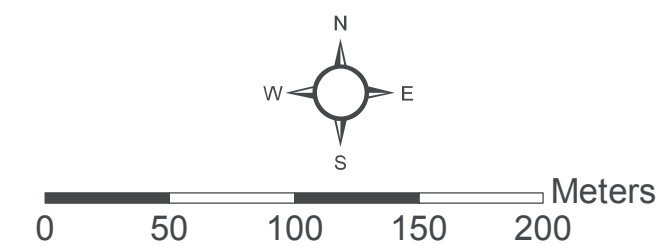


# BANGLADESH - Rohingya Refugee Crisis - Cox's Bazar District

## Kutupalong Makeshift Settlement - Water Points and General Infrastructure



- |   |                           |   |                   |
|---|---------------------------|---|-------------------|
| Unimproved Water Source                 | Health Centre             | Zone Boundary                           | Primary Footpath  |
| Hand Pump - Tubewell                    | Child Friendly Space      | Shelter Footprints (as of 25 September) | River             |
| Water Tank                              | Learning Centre/Madrassah | Main Road                               | Pedestrian Bridge |
| Unimproved Well                         | Mosque                    | Vehicle Road                            | Car Access        |
| Hand Pump - Tubewell (Non Functioning)* | Shop(s)                   |   | Pedestrian Access |
| Water Tank (Non Functioning)*           |                           |   |                   |



Data Sources:  
Camp Infrastructure - REACH  
Site Boundaries - REACH / OCHA ROAP  
Shelter Footprints - REACH / UNOSAT  
Satellite Imagery: WorldView-2 from 25 September 2017  
Copyright: ©2017 DigitalGlobe  
Source: US Department of State, Humanitarian Information Unit, NextView License.  
Coordinate System: GCS WGS 1984  
File:  
reach\_bgd\_map\_coxsbazar\_kutupalong\_ms\_infrastructure\_waterpoints\_17102017\_a1

\*Due to missing information in data collected by enumerators, the number of non-functioning facilities may be higher than indicated.  
Note: Data, designations and boundaries contained on this map are not warranted to be error-free and do not imply acceptance by the REACH partners, associates or donors mentioned on this

