

Baidoa Town IDP Settlements Profile

Baidoa District, Bay Region, Somalia

Summary

Baidoa is the capital of the Bay region; a strategic town in south-central Somalia situated approximately 250 kilometers west of Mogadishu and 240 km southeast of the Ethiopian border. Baidoa Town is a home to approximately 168 IDP settlements. The settlements host a number of Internally displaced persons (IDPs) who, as a result of protracted conflict and drought, have moved from their Areas of Origin to in Baidoa.

The objective of the assessment was to support multi-sectoral and area-based approaches to intervention in IDP settlements, through needs assessments and facility mapping, development of community information and coordination structures, and qualitative information on community needs, communication and demographics. This factsheet presents an overview of Baidoa town IDP settlements.

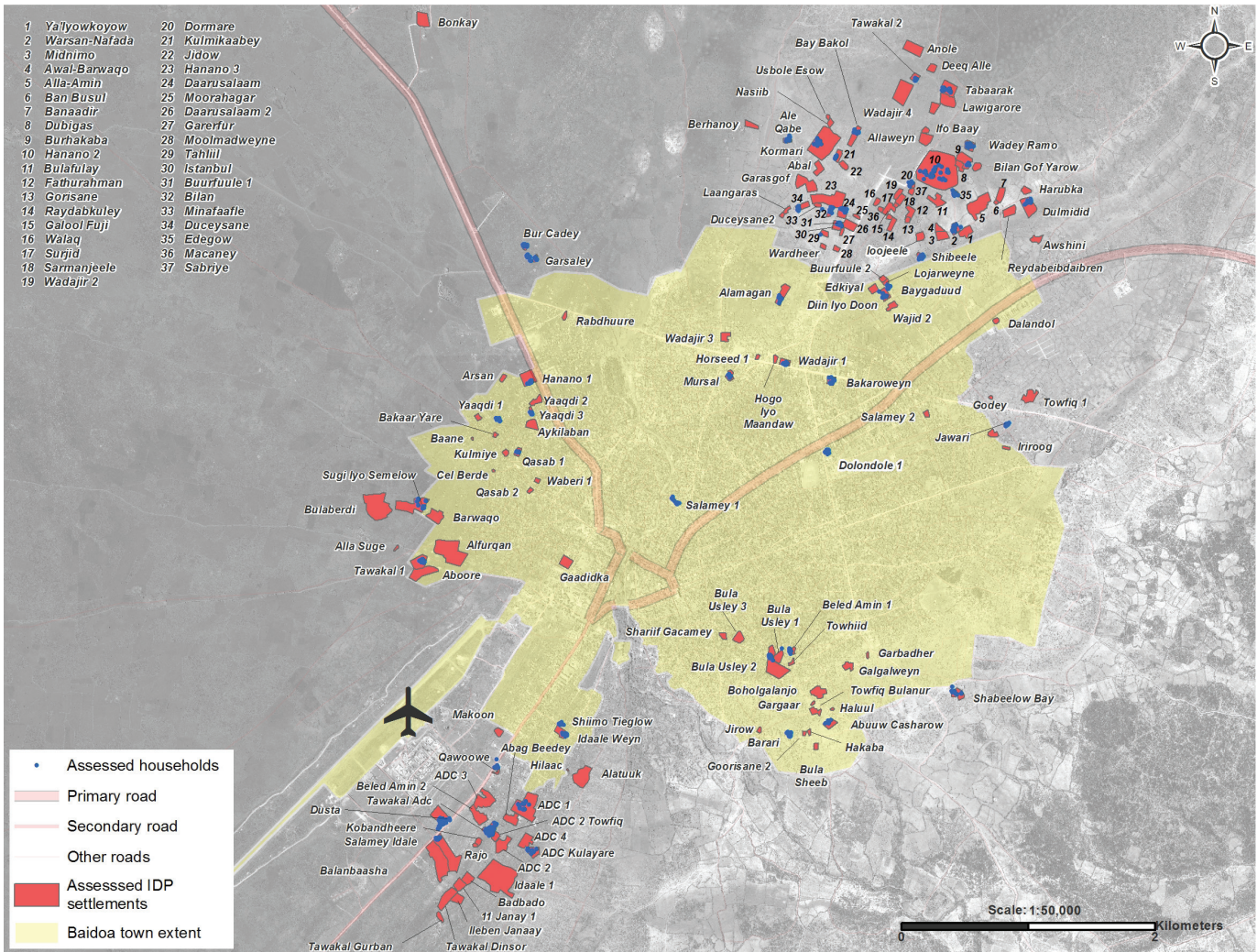
Findings are based on primary data collection through household surveys conducted between 8 and 11 April 2017. Additional data from key informant interviews and facility mapping, conducted between 13 and 14 April 2017, has been used to complement the household data. Findings are statistically representative of the population in the settlement with a confidence level of 95% and a margin of error of +/- 5%.

Education	% of children aged 5-17 that attend school	100%	8%	●
	% of schools that meet minimum teacher to student criteria of 1:45 (1 teacher to every 45 students)	100%	21%	●
Food	% of HHs reporting an acceptable food consumption score	100%	7%	●
	% of HHs reporting low or negative coping strategies	0%	21%	●
Shelter/ NFIs	% of HHs with acceptable NFI Score	100%	1%	●
	% of HHs reporting any damage to shelter	0%	65%	●
Health	% of HHs with children aged 6 months to 15 years that have received BCG and Measles vaccinations	100%	33%	●
	% of HHs with children aged 6 months to 15 years that have received Polio and DTP vaccinations	100%	49%	●
CCCM	% of HHs that have reported to be registered <sup>2</sup> in the settlement	100%	78%	●
	Average open area per HH	min 30m <sup>2</sup>	42m <sup>2</sup>	●
Water & Sanitation	% of HHs reporting hand washing with soap or ash	100%	13%	●
	% of HHs within 50m of a functioning latrine	100%	40%	●
Nutrition	% of HHs that accessed nutrition services in the last 3 months	100%	21%	●
	% of HHs with children under 6 months that are exclusively breastfed	100%	60%	●

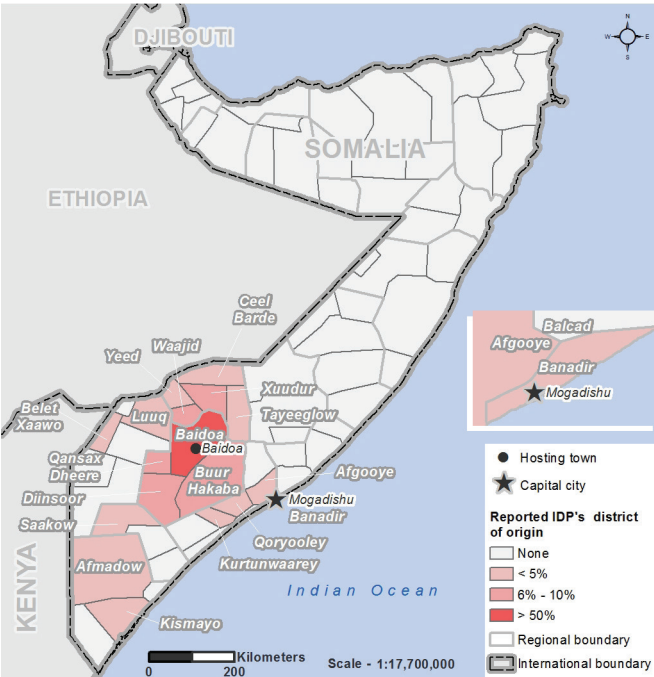
1) Targets are based on minimum Sphere or UNHCR standards. ● Target reached , ● Target more than 50% reached, ● Target less than 50% or not at all reached.  
2) Households were registered with Local Government, Community Leader or UN body  
3) Population and HH estimates from PRMN (Protection and Return Monitoring network) by UNHCR, March 2017



Baidoa Settlement Map



Areas of Origins



Primary reported pull factors for arriving in the IDP settlements:

- 1 Availability of Aid (55%)
- 2 Work (11%)
- 3 No conflict (5%)

Primary reported push factors for leaving their Areas of origin:

- 1 Drought (60%)
- 2 Conflict (10%)
- 3 Loss of Livelihoods (8%)

\* Households could select multiple answers

10% of HHs reported being at risk of eviction in their settlement



For more information on this profile please contact:  
REACH Initiative: [somalia@reach-initiative.org]  
<http://www.reachresourcecentre.info/countries/somalia>



Vulnerabilities

% of households reporting the following members:

Pregnant/Lactating Women	40%
Disabled or Chronically ill	11%
Sick Children	20%
Psychologically stressed separated children	5%
	4%

Communication

3 most trusted information sources reported by HHs:

- 1 Radio (46%)
- 2 Community Meetings (16%)
- 3 Telephone (5%)

Food Security

% of households reporting a change in food spending per week since previous month:

Increase	31%
Decrease	42%
No Change	27%

Average food spending per week: 6 USD. Food Minimum Expenditure Basket (MEB) For Bay in March was 73 USD.

Livelihood

Top 3 primary livelihood sources in the past year:

- 1 Day Labour (39%)
- 2 Subsistence Farming (20%)
- 3 Cash Crop Farming (13%)

Shelter

% of reported shelter types:

Buul	72%
CGI Sheeting	20%
Tent	5%
Other	3%

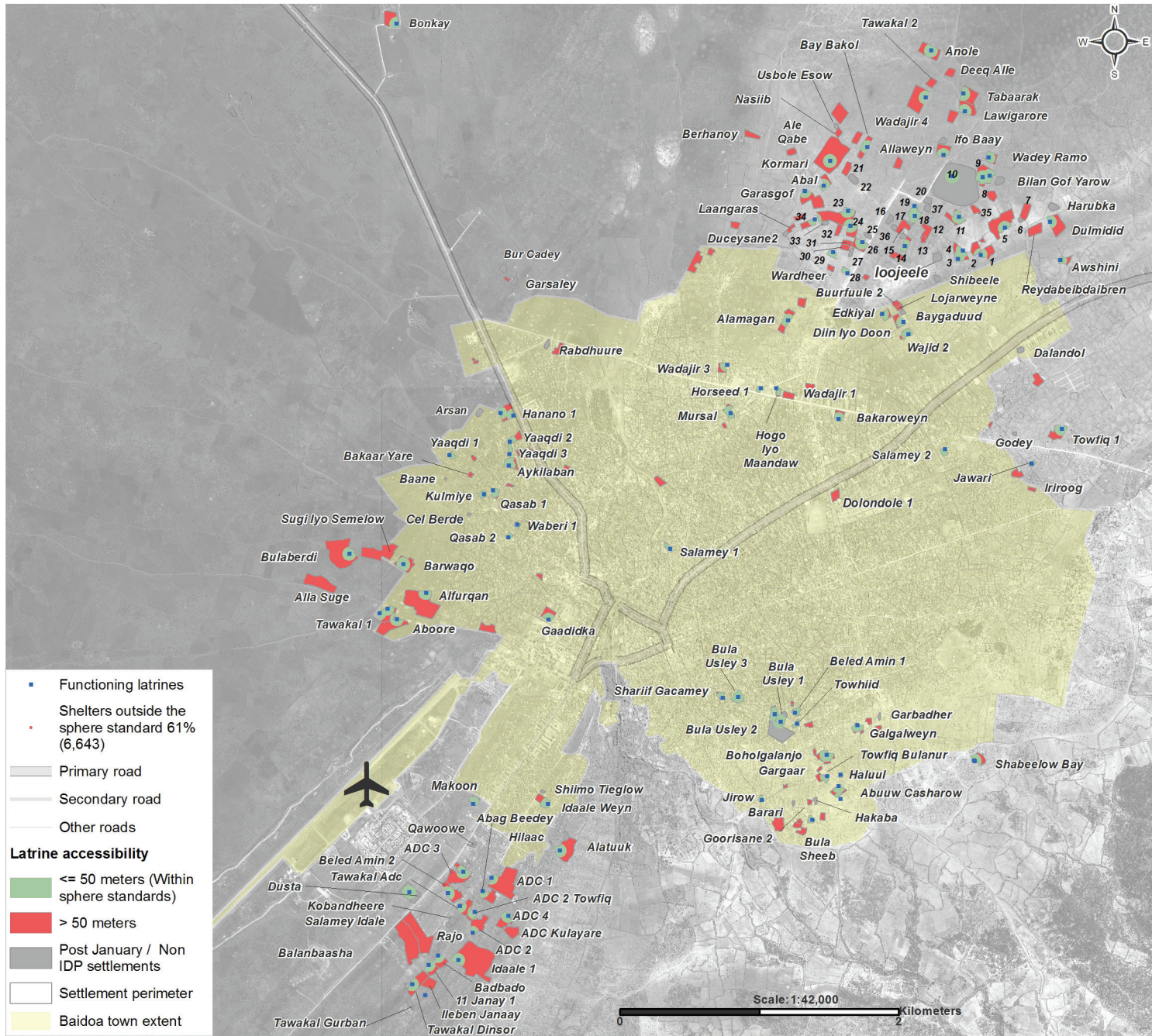
% of reported shelter categories:

Emergency	57%
Semi-Permanent	16%
Temporary	27%

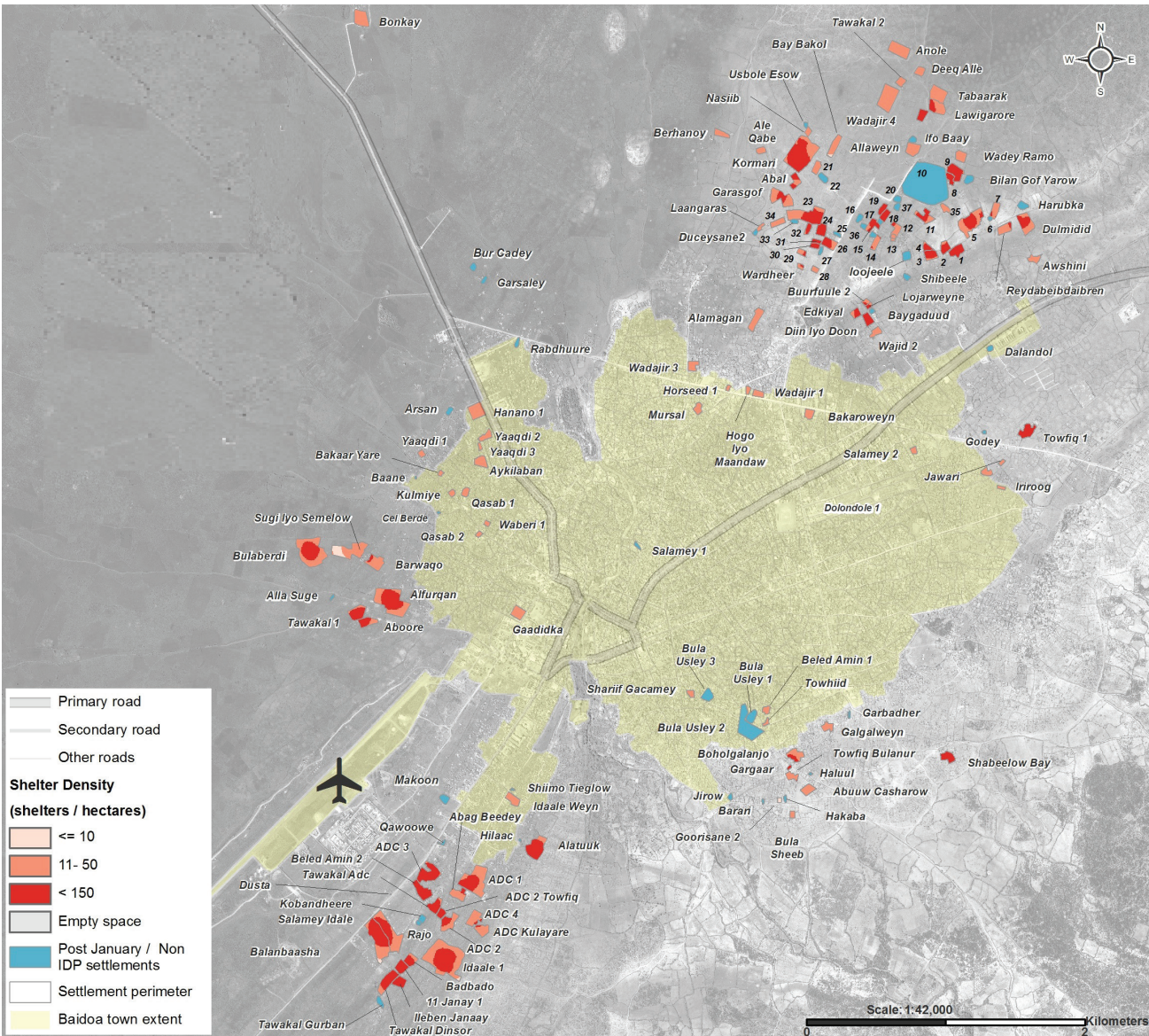
Primary shelter materials:

Floor	Earth (87%)
Main Structure	Wood (68%)
Wall & Roof	Clothes/Rags (48%)

Latrine & Water Access



Shelter Density & Access to Services



Education

47 schools are operational within 1km from the assessed shelters. Of these 47, the following types of schools are available:

Primary	31
Secondary	12
Quranic	2
Early Childhood Development	1
Informal	1

Average reported school dropout rate during the past school year:

Boys	19%
Girls	25%

Health

20 functioning health facilities are available within 5 km of the households in Baidoa.

The following types of health facilities are available:

Primary Health Care Unit	7
Health Centre	6
Pharmacy	3
Referral Health Centre	3
Hospital	1

Water & Sanitation

75 functioning water points are located within 500m of the households in Baidoa. The 3 most common water sources as reported by households are:

- 1 Water Trucking (67%)
- 2 Unprotected Well (6%)
- 3 Protected Well With Hand Pump (6%)

% of reported latrine types used by households:

Communal	68%
Private	5%
No Latrine	27%