

Yemen Joint Market Monitoring Initiative

August 2021 Situation Overview

Governorates 15
Districts 53
Key informants 203



WASH Cluster
Water Sanitation Hygiene

CMWGW

Intersector Cash
and Markets
Working Group

REACH

Informing
more effective
humanitarian action

Introduction

The Yemen Joint Market Monitoring Initiative (JMMI) was launched by REACH in collaboration with the Water, Sanitation, and Hygiene (WASH) Cluster and the Cash and Market Working Group (CMWG) to support humanitarian actors with the harmonization of price monitoring among all cash actors in Yemen. The JMMI incorporates information on market systems including price levels and supply chains. The basket of goods to be assessed includes ten non-food items (NFIs), such as fuel, water, and hygiene products, reflecting the programmatic areas of the WASH Cluster. The JMMI tracks all components of the WASH and Food Survival Minimum Expenditure Basket (SMEB) as well as other food and non-food items. In light of the current COVID-19 pandemic, REACH has adapted the JMMI to begin assessing the potential impact of the pandemic on markets and on respondents' businesses.

Methodology

Data was collected through interviews with vendor key informants (KIs), selected by partner organisations from markets of various sizes in both urban and rural areas. Following data collection, REACH compiles, cleans and analyzes all data, through detailed follow-ups with partners. Findings are **indicative** for the assessed locations and time frame in which the data was collected. From April to September 2020, data for the JMMI was collected on a bi-weekly basis to better track disruptions caused by COVID-19. COVID-specific JMMI factsheets were produced bi-weekly, and a more comprehensive situation overview using data from both factsheets was produced monthly. After discussion with the CMWG, REACH resumed data collection on a monthly basis in September 2020, and resumed producing one monthly situation overview. Please refer to page 12 for additional methodological details.

JMMI monthly figures

Data collection **8 August - 12 August**

15 Participating partners
15 Governorates assessed
53 Districts assessed
203 Vendor KIs surveyed

Assessed items	July 2021 prices in YER	August 2021 prices in YER	Change (from July 2021)
Full SMEB* (dry beans)	73718	75660	+2.6%
WASH SMEB**	16668	14960	-11.4%
Soap (100g)	200	200	0.0%
Laundry powder (100g)	150	153	+2.0%
Sanitary napkins (10 Pack)	634	700	+10.4%
Water trucking (1m ³)	2666	2000	-33.3%
Petrol (1L)	580	565	-2.6%
Diesel (1L)	600	660	+10.0%
Bottled water (0.75L)	150	150	0.0%
Treated water (10L)	100	100	0.0%
Bleach (1L)	900	1000	+11.1%
Cooking gas (1cylinder)	6800	7000	+2.9%
Food SMEB (dry beans)[^]	57050	60700	+6.4%
Food SMEB (canned beans)[§]	60450	67700	+12.0%
Wheat flour (1 kg)	450	480	6.7%
Rice (1 kg)	900	950	5.6%
Dry kidney beans (1 kg)	1100	1100	0.0%
Canned kidney beans (15 oz can)	400	500	+25.0%
Lentils (1 kg)	800	800	0.0%
Vegetable oil (1L)	1350	1500	+11.1%
Sugar (1 kg)	540	620	+14.8%
Salt (1 kg)	150	150	0.0%
Potatoes (1 kg)	400	500	+25.0%
Onions (1 kg)	400	450	+12.5%

* Includes WASH and food SMEB; excludes cooking gas, NFI/Shelter and Services.

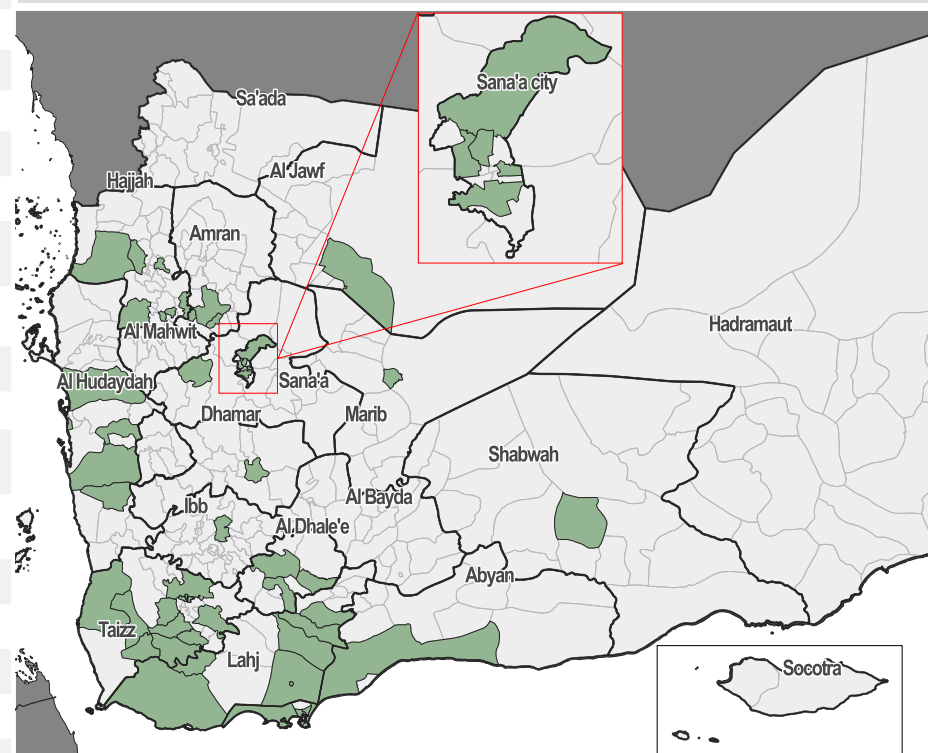
** Contains soap (1.05 kg), laundry powder (2 kg), sanitary napkins (50 units), and water (3.15 m³).
Sanitary napkins' units were changed from 20 to 50 based on CMWG's September SMEB revision.

[^] Contains wheat flour (75 kg), dry beans (10 kg), vegetable oil (8 L), sugar (2.5 kg), salt (1 kg)

[§] Contains wheat flour (75 kg), canned beans (36 cans), vegetable oil (8 L), sugar (2.5 kg), salt (1kg)

Key findings

- **Exchange rates for new notes were recorded at levels of 1000 YER and higher for the first time.** The highest recorded exchange rate was in Taizz (1030 Yemeni Riyal (YER) to one US dollar (USD)). The parallel exchange rate remained stable, with a median level of 594 YER to one USD.
- **The average reported restocking time for fuel jumped in Sana'a and Sana'a City governorates.** In Sana'a, a restocking time of 30 days was recorded (compared to 4 days in July) and in Sana'a City a restocking time of 11 days (compared to 1 day in July) was reported. In terms of decline in restocking time, the steepest decline was recorded in Amran for fuel (19 days compared to 30 days in July). Nevertheless the restocking time remains high.
- **Price inflation, followed by transportation challenges,** remains the most commonly reported constraint faced by the vendor KIs when obtaining fuel, WASH items, food items, and water trucking services.
- **The WASH SMEB cost was found to have decreased by 11.4% since the last round of data collection in July.** This can be attributed to a recorded decrease of water trucking cost by 33.3%.
- **The Food SMEB (dry beans) increased by 6.7% between August and July,** compared to an increase of 3.4% between June and July. The highest price increase was recorded for Potatoes (25%) and sugar (14.8%), contributing to a **2.4% increase in the overall SMEB cost.**
- **The proportion of vendors reporting being able to absorb a sudden increase** decreased considerably for water trucking vendors, after an increase was recorded in July.



Exchange Rate

250
► 0.0%
USD/YER
Official

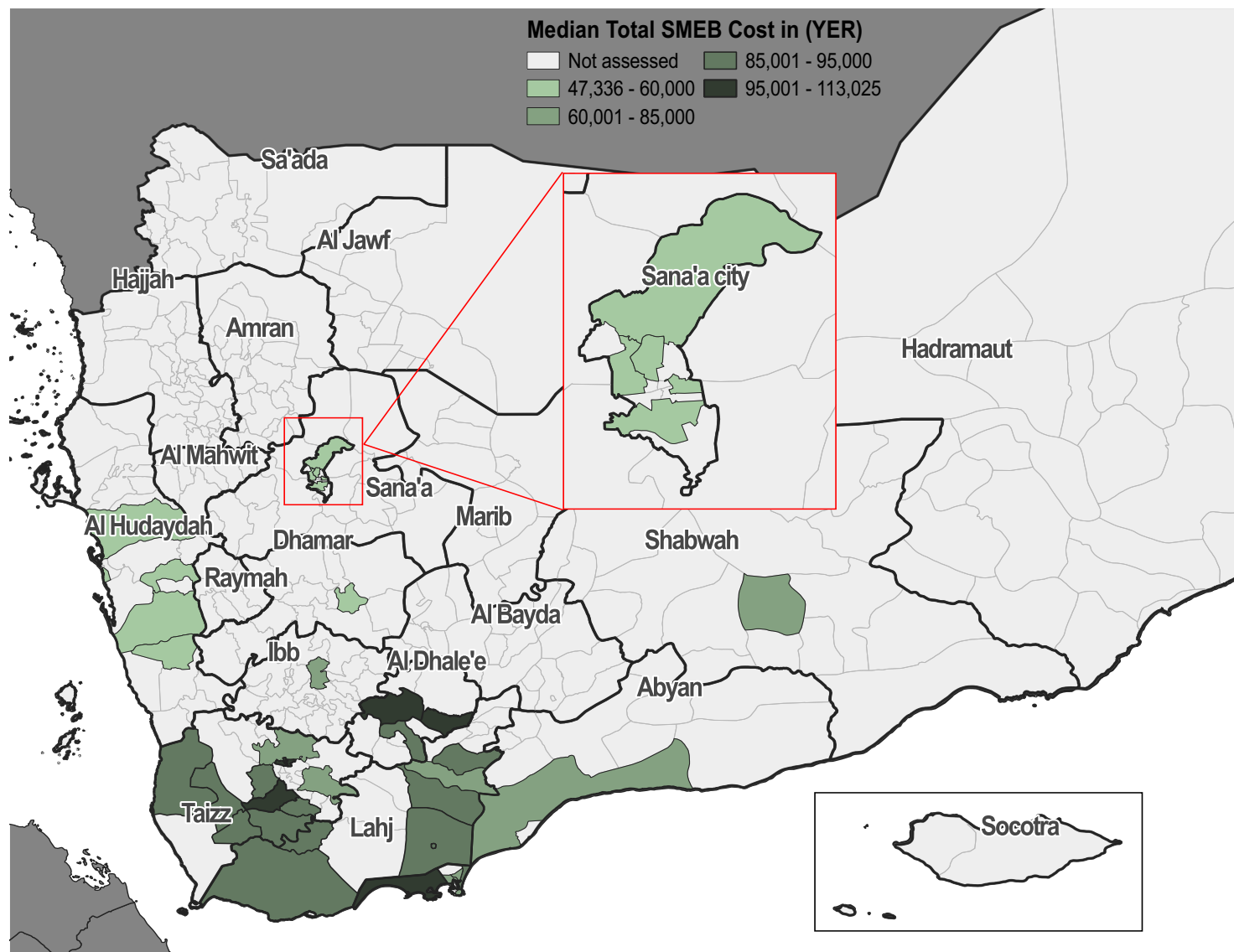
597
► 0.0%
USD/YER
Parallel market (in DFA)
rate August 2021

595
USD/YER
Parallel Market
rate (in DFA)
July 2021

1000
▲ 1.0%
USD/YER
Parallel market (in IRG)
rate August 2021

955
USD/YER
Parallel Market rate
(in IRG)
July 2021

Total SMEB prices (8-12 August 2021)*,^



*Total SMEB cost in the legend represents the calculated food basket cost with dry beans.

^ Red outlines over districts indicate the districts for which outliers were recorded.

Exchange rate (YER/

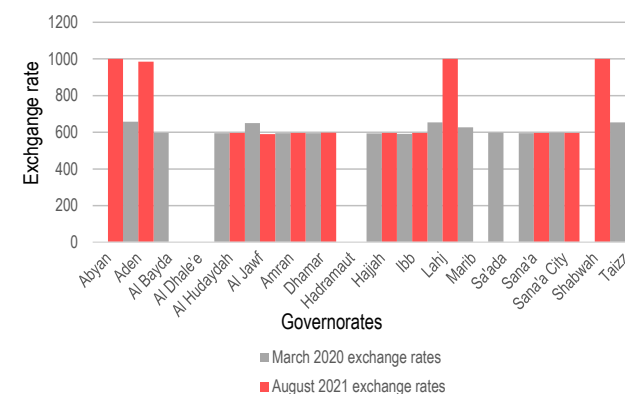
Governorate	March 2020 [^]	July 2021	August 2021
Abyan	NA	950	1000
Aden	658	950	985
Al Bayda	596	NA	NA
Al Dhale'e	NA	600 (955)	NA
Al Hudaydah	595	597	597
Al Jawf	650	600	590
Amran	595	595	596
Dhamar	595	595	598
Hadramaut	NA	1000 (961)	NA
Hajjah	594	597	597
Ibb	592	597	597
Lahj	654	945	1000
Marib	628	600 (945)	NA
Sa'ada	598	NA	NA
Sana'a	595	NA	596
Sana'a City	598 (628)	595	597
Shabwah	NA	900	1000

*New banknote exchange rates / Exchange rate for the new currency released last year is in parenthesis.

NA (not applicable) data was not available.

^March was chosen as a baseline to assess the effect of COVID-19 on exchange rates.

Exchange rate in March 2020 and August 2021 (YER/USD)*



*Governorate labels point to two bars indicating March 2020 base values and August 2021 values. Gaps between bars indicates that no exchange rate value was recorded in this governorate.

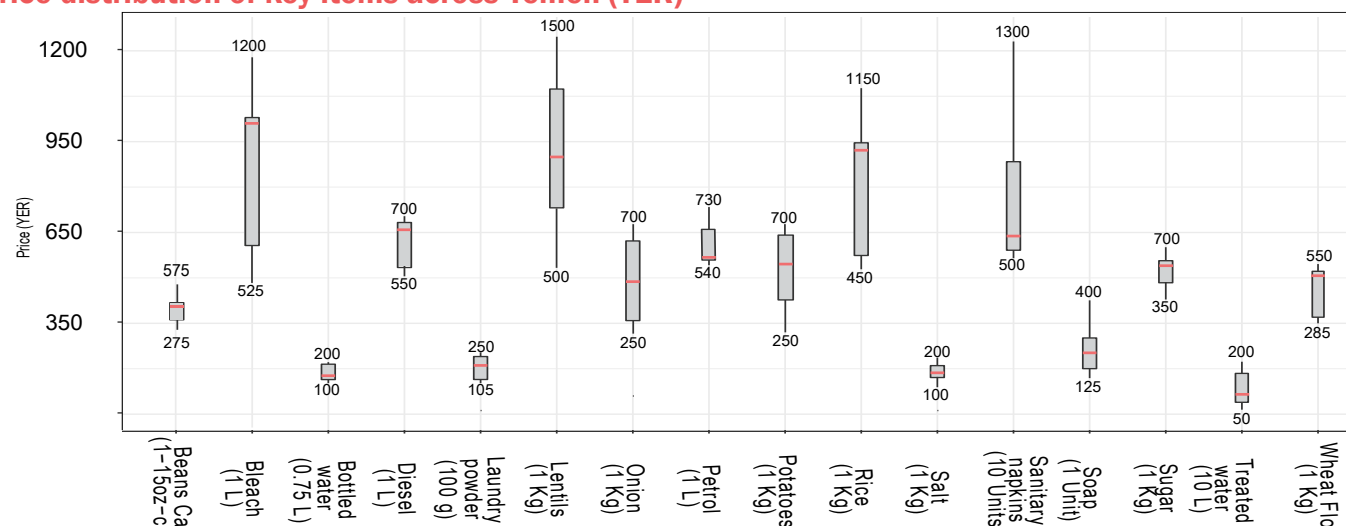
Price per key item, per governorate (YER)*

Governorate	Petrol (1L)	Diesel (1L)	Cooking gas (1 cylinder)	Bottled water (0.75L)	Treated water (10L)	Soap (100g)	Laundry powder (100g)	Sanitary napkins (10 units)	Bleach (1L)	Water trucking (1m³)	WASH SMEB	Wheat flour (1kg)	Rice (1kg)	Beans dry (1kg)	Beans cans (15oz)	Lentils (1kg)	Vegetable oil (1L)	Sugar (1kg)	Salt (1kg)	Potatoes (1kg)	Onions (1 kg)	Food SMEB (Dry Beans)	Food SMEB (Canned beans)
Abyan	670	700	4500	100	100	263	150	750	1200	2250	16599	550	800	1000	450	NA	1800	700	100	600	600	67500	73700
Aden	560	640	9200	200	100	200	160	800	1200	5750	27413	550	1150	550	550	1400	1800	700	200	500	700	63100	77400
Al Dhale'e	660	675	9000	200	100	250	170	800	1117	4000	22625	510	1162	2000	500	1000	1800	655	200	800	500	74488	72488
Al Hudaydah	550	575	10000	150	50	150	130	550	650	2000	13225	320	1000	800	325	800	1100	450	100	500	350	42025	45725
Al Jawf	550	560	5000	200	NA	350	250	1300	700	2000	21475	296	438	NA	350	NA	1500	420	150	400	300	NA	48000
Amran	540	525	NA	130	150	150	120	500	1000	1475	11121	350	600	NA	300	700	1000	350	150	350	325	NA	46075
Dhamar	540	550	7500	130	500	150	150	600	750	1000	10725	285	450	1400	330	800	1300	430	100	300	250	46950	44830
Hadramaut^	NA	NA	NA	NA	NA	NA	NA	NA	NA	NA	NA	NA	NA	NA	NA	NA	NA	NA	NA	NA	NA	NA	NA
Hajjah	550	650	8750	150	100	150	130	500	1000	2000	12975	350	900	NA	300	800	1040	400	100	400	450	NA	46470
Ibb	540	550	5000	150	100	200	150	600	900	3000	17550	450	750	1125	275	725	650	550	150	250	300	51725	50375
Lahj	635	678	7000	200	100	200	160	800	1200	2000	15600	500	1150	1800	575	1500	1750	700	200	700	600	71450	74150
Marib	NA	NA	NA	150	150	250	200	750	1000	NA	NA	514	1000	1000	525	1000	1563	680	100	NA	NA	62854	71754
Sana'a	NA	NA	5000	120	200	150	109	500	1000	1350	10508	350	500	NA	300	500	1013	400	150	400	250	NA	46304
Sana'a City	540	568	4700	110	135	125	105	575	525	1167	9964	300	550	700	300	700	887	400	100	350	350	37700	41500
Shabwah	700	660	4500	100	NA	400	550	500	500	2600	25890	500	550	450	450	800	1550	500	250	400	450	55900	67600
Taizz	730	740	7000	200	150	208	200	800	1184	3833	22258	510	925	2000	500	1200	1700	700	155	700	500	73755	71755
National median price	565	660	7000	150	100	200	153	700	1000	2000	14960	480	950	1100	500	800	1500	620	150	500	450	60700	67700

*Darker colour strokes indicate high outliers for each commodity, lighter colour strokes indicate the low outliers of each commodity. NA (not applicable) data was not available.

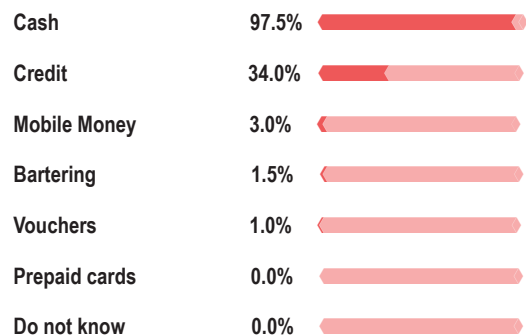
^No data was collected in August for Hadramaut governorate, but data collection will resume in this governorate next month.

Price distribution of key items across Yemen (YER)



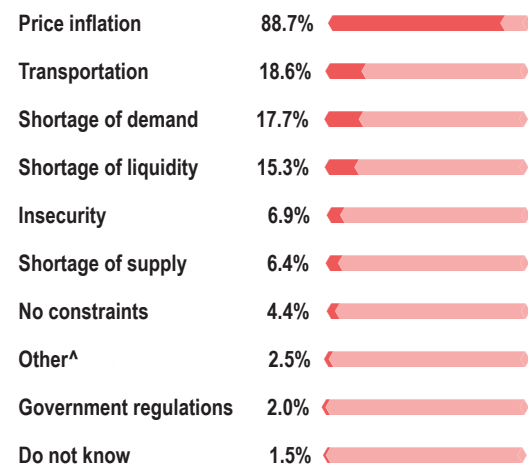
WASH SMEB*

WASH vendor KIs reported accepting the following payment



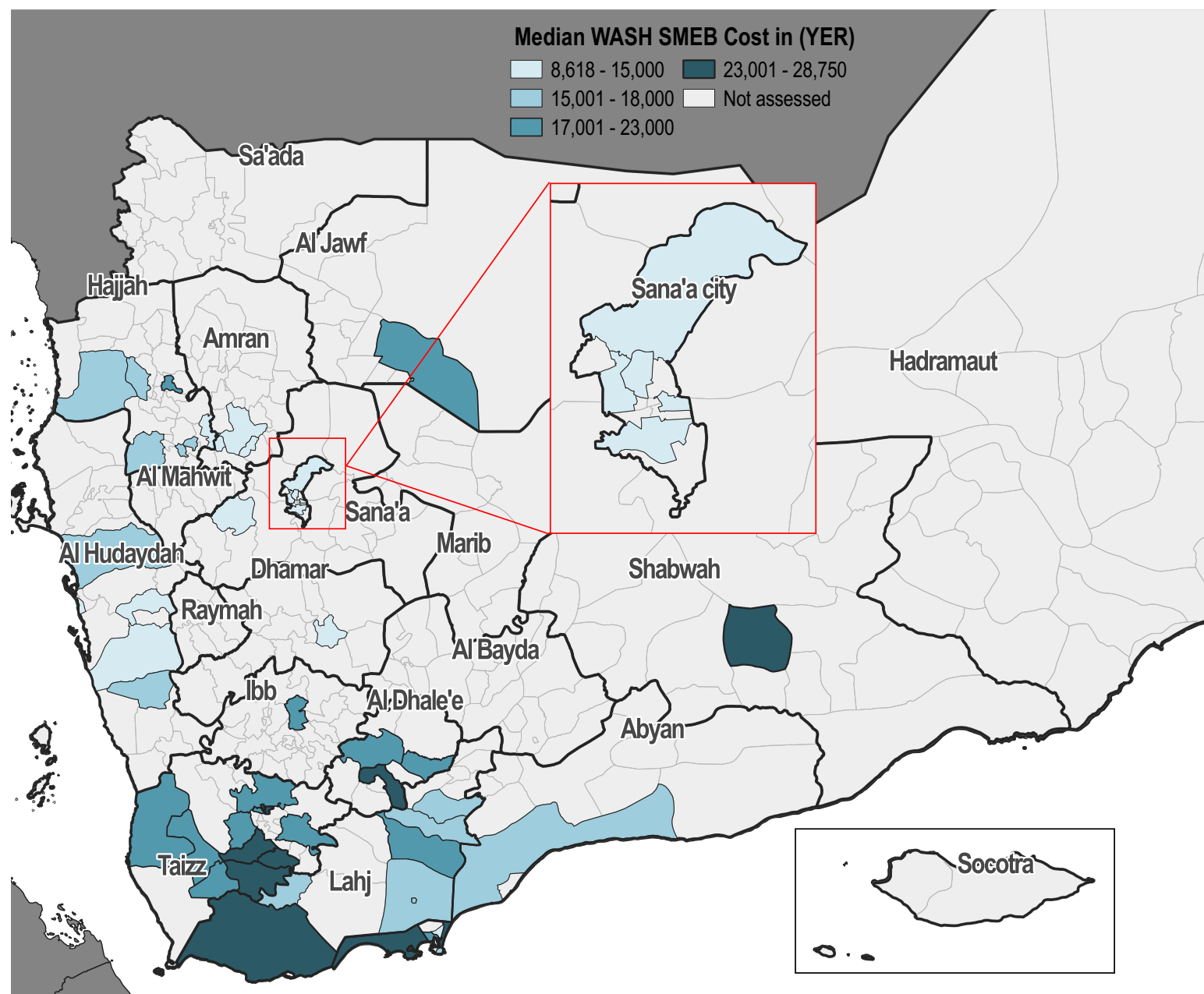
*Values do not add up to 100% as vendor KIs were allowed to select multiple options.

Most commonly reported constraints, by % of WASH vendor



*Values do not add up to 100% as vendor KIs were allowed to select multiple options.

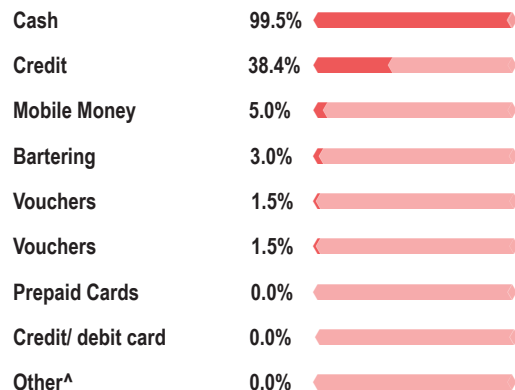
[^]Includes increased currency fluctuations, lack of oil derivatives, and additional fees.



*Red outlines over districts indicate the districts for which outliers were recorded.

Food SMEB*

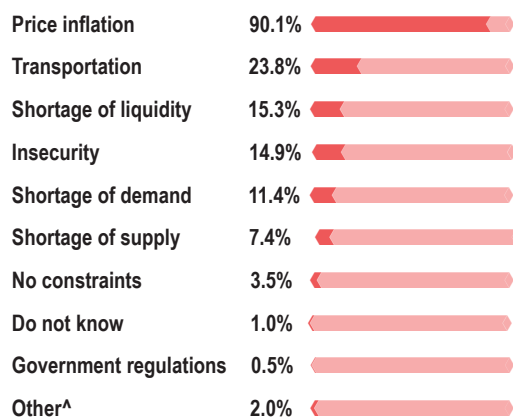
Food vendor KIs reported accepting the following payment modalities*



*Values do not add up to 100% as vendor KIs were allowed to select multiple options.

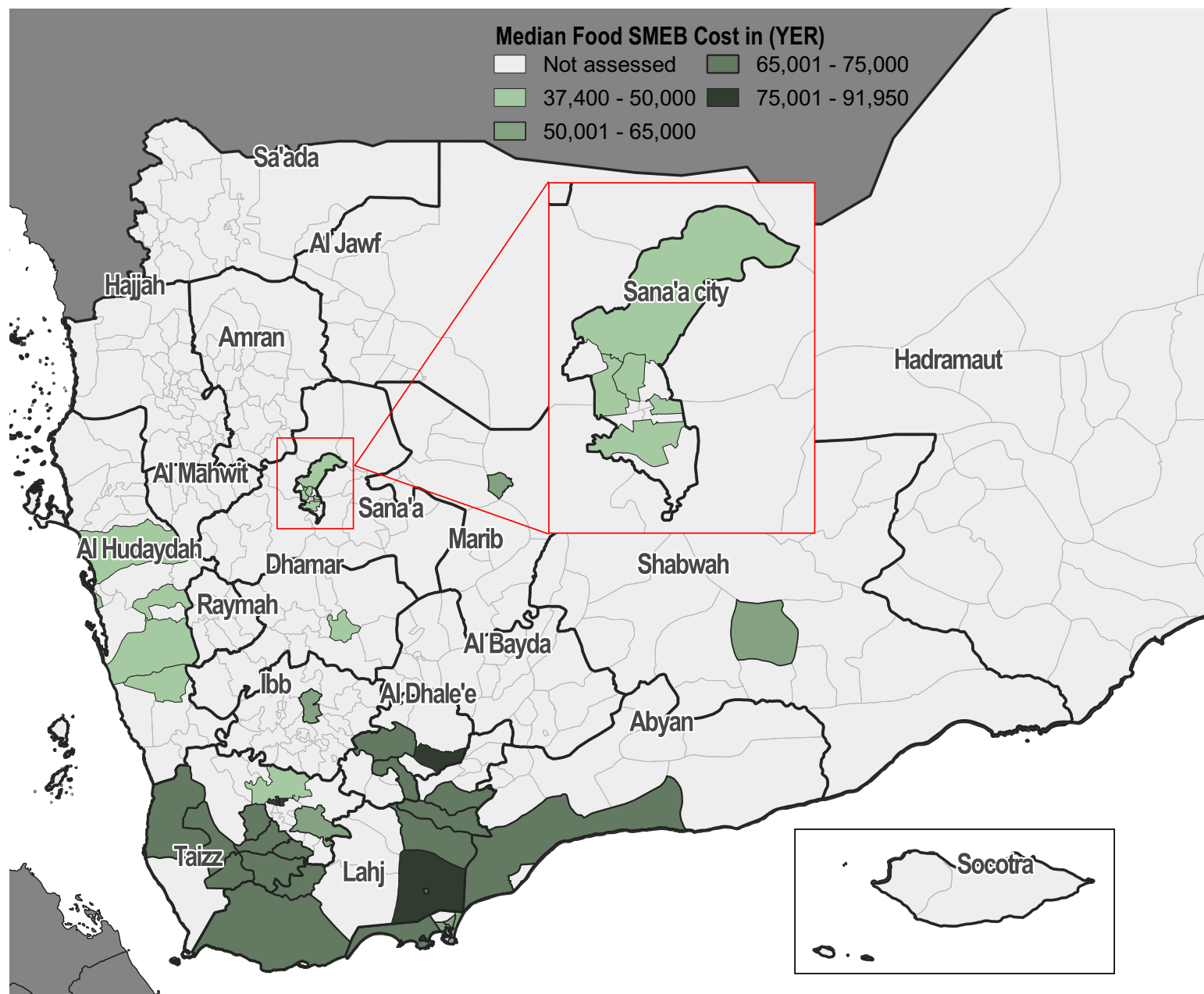
^Includes bank transfers.

Most commonly reported constraints, by % of food vendor



*Values do not add up to 100% as vendor KIs were allowed to select multiple options.

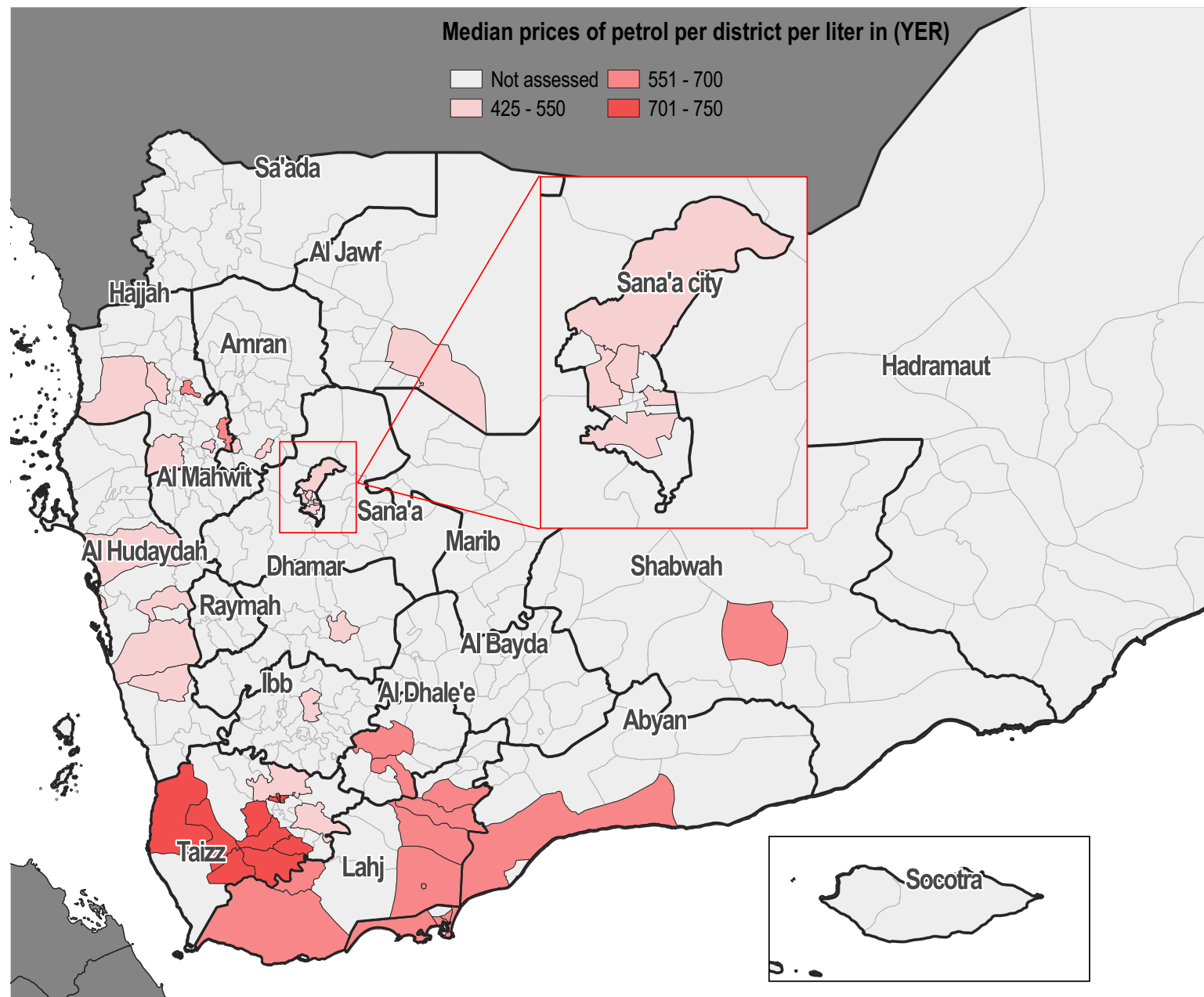
^Includes increased currency fluctuations, lack of oil derivatives, and additional fees.



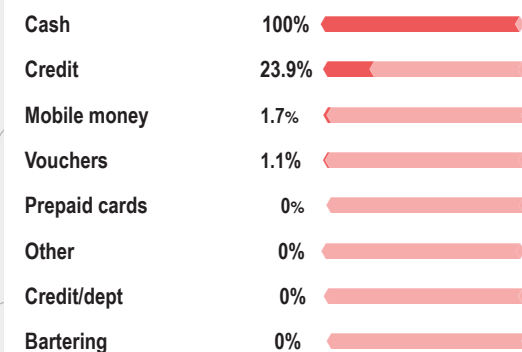
*Total SMEB cost in the legend represents the calculated food basket cost with dry beans.

Median prices of petrol per district per liter in (YER)

Not assessed 551 - 700
425 - 550 701 - 750

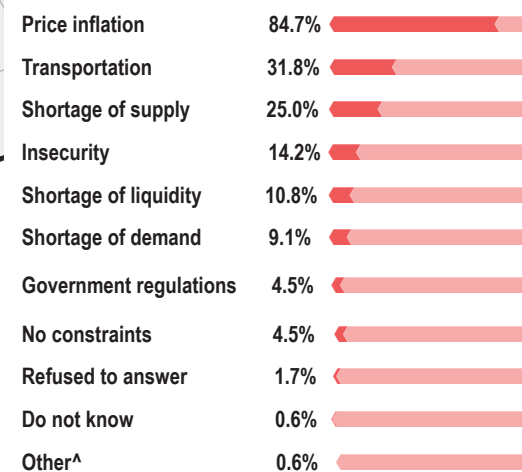


Fuel vendor KIs reported accepting the following payment modalities*



*Values do not add up to 100% as vendor KIs were allowed to select multiple options.

Most commonly reported constraints, by % of fuel vendor KIs*



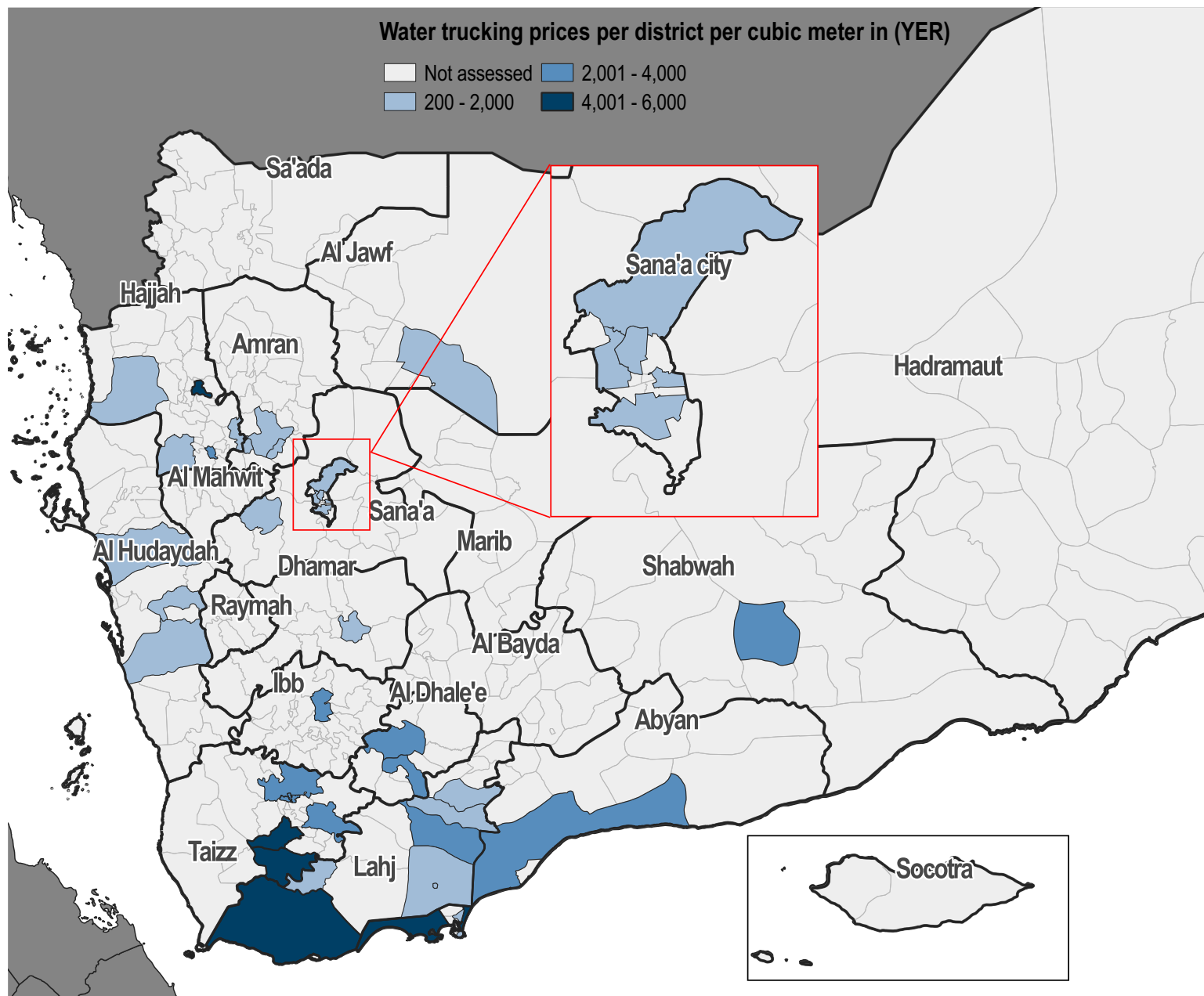
*Values do not add up to 100% as vendor KIs were allowed to select multiple options.

^Includes increased currency fluctuations, loss of vendors in the area, and additional fees.

Water Trucking

Water trucking prices per district per cubic meter in (YER)

Not assessed 2,001 - 4,000
200 - 2,000 4,001 - 6,000



*Red outlines over districts indicate the districts for which outliers were recorded.

Water trucking vendor KIs reported accepting the following payment modalities*

Cash	100%	<div></div>
Credit	22.6%	<div></div>
Other	0%	<div></div>
Mobile money	0%	<div></div>
Do not know	0%	<div></div>
Vouchers	0%	<div></div>
Credit/ debit card	0%	<div></div>
Prepaid cards	0%	<div></div>

*Values do not add up to 100% as vendor KIs were allowed to select multiple options.

^Includes bank transfers.

Most commonly reported constraints, by % of water trucking

Price inflation	70.4%	<div></div>
Shortage of demand	23.5%	<div></div>
Transportation	18.3%	<div></div>
Insecurity	13.0%	<div></div>
No constraints	10.4%	<div></div>
Other^	10.4%	<div></div>
Shortage of liquidity	9.6%	<div></div>
Shortage of supply	4.3%	<div></div>
Government regulations	1.0%	<div></div>
Do not know	0%	<div></div>

*Values do not add up to 100% as vendor KIs were allowed to select multiple options.

^Includes increased currency fluctuations, loss of vendors in the area, and additional fees.

SUPPLY CHAIN OVERVIEW FOR YEMEN

Median price of goods originating from Aden and al Hudaydah

Vendor KIs were asked about the origin of various products sold in their stores. The two main ports of origin for these products were Aden and al Hudaydah. The table below shows the median price of goods originating from these two ports.

Item	Al Hudaydah (price in YER)	Aden (price in YER)
Petrol (1L)	540	660
Diesel (1L)	600	700
Cooking Gas (1 cylinder)	10000	7000
Bottled water (0.75L)	150	200
Treated water (10L)	60	135
Bleach (1L)	600	1200
Soap (100g)	150	250
Laundry Powder (100g)	130	200
Sanitary Napkins (10 units)	500	850
Water trucking (1m ³)	2000	3833
Wheat Flour (1kg)	300	575
Rice (1kg)	1000	1250
Beans Dry (1kg)	800	2100
Beans Can (15oz can)	325	550
Lentils (1kg)	800	1350
Vegetable Oil (1L)	1025	2000
Sugar (1kg)	450	740
Salt (1kg)	50	225
Potatoes (1kg)	500	650
Onions (1kg)	375	550

Average reported restocking time (days)*^

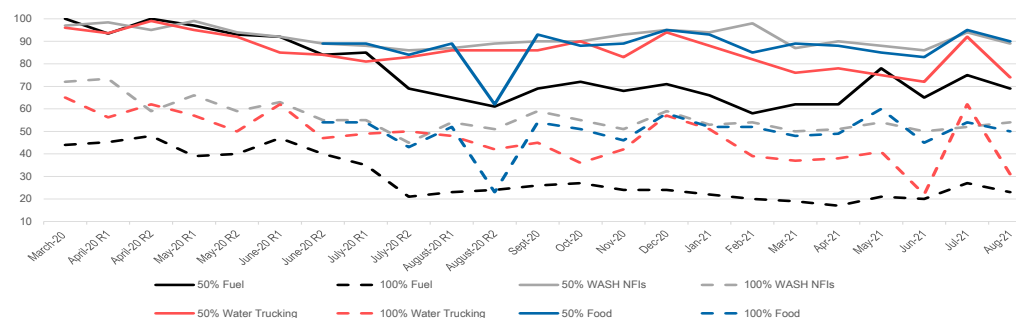
Governorate	Fuel Items	WASH Items	Food Items
Abyan	5(5)	4(3)	4(3)
Aden	4(4)	2(3)	3(2)
Al Dhale'e	4(3)	2(2)	3(2)
Al Hudaydah	10(10)	13(14)	12(9)
Al Jawf	4(8)	5(6)	4(4)
Amran	19(30)	3(4)	4(6)
Dhamar	NA	4(1)	3
Hadramaut	(5)	(13)	13
Hajjah	7(10)	7(6)	5(5)
Ibb	(6)	3(4)	
Lahj	7(9)	7(11)	6(2)
Marib	NA	2(3)	2
Sana'a	30(4)	2(2)	2(8)
Sana'a City	11(1)	3(1)	2(1)
Shabwah	1(5)	1(5)	1(1)
Taizz	7	7	6(4)

*Previous average restocking time (July 2021) in days between brackets.

^ Darker colour strokes indicate high outliers for each commodity, lighter colour strokes indicate the low outliers of each commodity. NA (not applicable)

Vendor capacity to respond to a sudden increase in demand: Proportion of vendors able to absorb a 50% and 100% increase in demand for key items*

To understand vendor capacity to cope with sudden increases in the demand for water trucking, fuel, and WASH items, vendor KIs were asked if they would be able to increase their stock by 50% and 100% respectively.

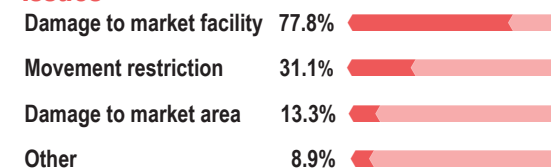


*Between April and August 2020, two rounds of data collection were held each month to monitor the foreseen more rapid changes as a result of the COVID-19 pandemic and restrictions

Effect of supply route changes on businesses

Overall, 28.5% of vendor KIs (45/203) reported having faced supply chain disruptions in the 30 days prior to data collection. Those vendors were asked which supply chain issues they had faced (see graph on the right).

Most commonly reported supply chain issues*



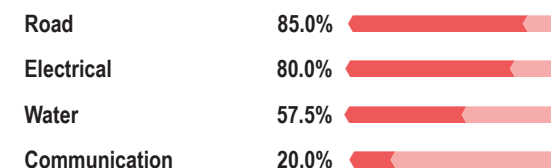
*Values do not add up to 100% as vendor KIs were allowed to select multiple options.

^Other includes: "Lack of oil derivatives" and "high exchange USD/YER rate".

Damaged infrastructure affecting vendor capacity to conduct business

The 28 vendor KIs who reported "damage to the market area" and/or "damage to the market facility" as concerns affecting their capacity to run their businesses were then asked which type of infrastructure was most damaged.

Most commonly reported infrastructure damage*



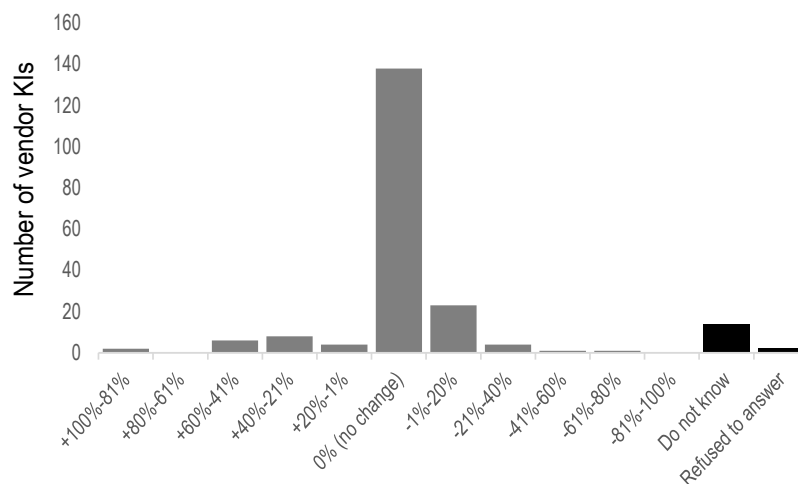
*Values do not add up to 100% as vendor KIs were allowed to select multiple options.

Impact of COVID-19 on respondents' businesses

Reported estimated change in number of customers in the two weeks prior to data collection

Overall, over half of vendor KIs (66.8%, 136/203 vendors) reported having perceived no change in the number of customers in the two weeks prior to data collection. 14.3% or 29/203 of vendors reported having experienced a decrease in the number of customers. 9.8% or 20/203 of vendors reported having experienced an increase in the number of customers.

Of the 203 vendor KIs surveyed, 4.0% (8/203) reported having faced difficulties obtaining key commodities due to disruptions caused by COVID-19 measures in the two weeks prior to data collection.



Average number of businesses closures by governorate^

The reported number of businesses within a 2 minute walk from vendor KIs' stalls being closed in the two weeks prior to data collection (162 businesses) increased by 23.6% compared to the last round of data collection in July (131 businesses).



Average reported number of nearby businesses that were open in March 2020*

9

*Average number of businesses within a two minute walk from KIs' businesses that were open in early March 2020, as reported by vendors in August 2021.

Average reported number of nearby businesses that were closed in August 2021^

1

^Average number of businesses within a two minute walk from KIs' businesses that were reportedly closed due to COVID-19 in the two weeks prior to data collection.

Average reported number of nearby businesses that were closed in July 2021^

0.6

^Average number of businesses within a two minute walk from KIs' businesses that were reportedly closed due to COVID-19 in the two weeks prior to data collection.

Top 3 COVID-19 related constraints*

Shortage of supplies	87.5%	
Transportation	75.0%	
Availability of goods	35.7%	

Results from the previous JMIMI round (4 - 8 July)

Shortage of supply	66.7%	
Shortage of liquidity	50.0%	
Transportation	33.3%	

*Based on the responses from the 4% (8/203) of vendor KIs who had difficulties obtaining goods due to COVID-19.

Top 3 most difficult goods to obtain^

Sanitary napkins	50.0%	
Flour	37.5%	
Diesel	20.0%	

Results from the previous JMIMI round (4 - 8 July)

Vegetables	66.7%	
Fruits/Suger	33.3%	
Diesel/Cooking gas	33.3%	

^Based on the responses from the 4.3% (10 out of 232) of vendor KIs who had difficulties obtaining goods due to COVID-19.

ABOUT REACH'S COVID-19 RESPONSE

As an initiative deployed in many vulnerable and crisis-affected countries, REACH is deeply concerned by the devastating impact the COVID-19 pandemic may have on the millions of affected people we seek to serve. REACH works with Cash Working Groups and Partners to provide up-to-date evidence to inform the humanitarian responses in the countries where we operate. COVID-19-relevant market monitoring and market assessments are a key area where REACH aims to leverage its existing expertise to help humanitarian actors understand the impact of changing restrictions on markets and trade. Updates regarding REACH's response to COVID-19 can be found in [a devoted thread](#) on the REACH website. Contact geneva@impact-initiatives.org for further information.

DISTRICTS COVERED*

Governorate	District	Petrol price	Water Trucking	SMEB WASH	SMEB Food	SMEB Total	Fuel: Supplier Governorate	Fuel: Total number of respondents^	WASH: Supplier Governorate	WASH: Total number of respondents^	Food: Supplier governorate	Food: Total number of respondents^
Hajjah	Abs	545	2000	13700	NA	NA	Al Hudaydah	4/6	Al Hudaydah	6/6	Al Hudaydah	3/6
Al Dhale'e	Ad Dhale'e	625	4000	23288	71150	94438	Aden	3/4	Al Dhale'e	4/4	Al Dhale'e	3/4
Lahj	Al Hawtah	560	1600	15340	71500	86840	Aden	3/3	Aden	3/3	Aden	3/3
Taizz	Al Mukha	715	NA	21924	65538	87461	Aden	6/6	Aden	6/6	Aden	6/6
Aden	Al Buraiqeh	560	6000	28750	66850	95600	Aden	5/5	Aden	5/5	Aden	5/5
Al Hudaydah	Al Hawak	425	NA	12975	43450	56425	NA	NA	NA	NA	NA	NA
Sana'a	Al Haymah Ad	NA	1350	10508	NA	NA	Al Hudaydah	1/1	Sana'a	3/3	Sana'a	3/3
Al Jawf	Al Hazm	550	2000	21475	NA	NA	Marib	3/3	Sana'a	3/3	Sana'a	3/3
Al Hudaydah	Al Khawkhah	NA	NA	NA	NA	NA	NA	NA	NA	NA	NA	NA
Taizz	Al Ma'afer	713	5000	25433	70550	95983	NA	NA	Aden	5/6	Aden	3/6
Lahj	Al Madaribah Wa	700	5555	27298	67700	94998	Aden	3/3	Aden	3/3	Aden	3/3
Ibb	Al Makhadir	540	3000	17550	51725	69275	NA	NA	Ibb	3/3	Ibb	3/3
Aden	Al Mansura	560	NA	21255	59054	80309	Aden	3/3	Aden	3/3	Aden	3/3
Lahj	Al Maqatirah	600	2000	16700	71800	88500	Aden	3/3	Aden	3/3	Aden	3/3
Taizz	Al Mawasit	750	NA	23417	67854	91271	Lahj	3/3	Taizz	2/3	Taizz	3/3
Lahj	Al Milah	660	3000	18270	73650	91920	Aden	3/3	Aden	2/3	Lahj	2/3
Taizz	Al Mudhaffar	750	3000	21075	91950	113025	Aden	3/3	Aden	3/3	Taizz	2/3
Hadramaut	Al Mukalla City	NA	NA	NA	NA	NA	NA	NA	NA	NA	NA	NA
Taizz	Al Qahirah	750	3833	24199	86925	111124	Aden	3/3	Aden	3/3	Aden	3/3
Taizz	Al Wazi'iyah	715	NA	22308	66334	88642	Aden	6/6	Aden	6/6	Aden	5/6
Amran	Amran	540	1750	12410	NA	NA	NA	NA	Sana'a	6/6	Sana'a	5/6
Sana'a City	As Sabain	540	1600	12505	38275	50780	Sana'a city	3/5	Sana'a	3/6	NA	NA
Al Hudaydah	As Sukhnah	550	200	7555	43675	51230	Al Hudaydah	3/3	Al Hudaydah	3/3	Al Hudaydah	3/3
Aden	Ash Shaikh	560	1000	12775	64650	77425	Aden	3/3	Aden	3/3	Aden	3/3
Taizz	Ash Shamayatayn	730	5000	26375	66650	93025	NA	NA	Aden	6/9	Taizz	5/9
Al Dhale'e	Ash Shu'ayb	NA	NA	22355	78283	100638	NA	NA	Aden	3/3	Aden	3/3
Hajjah	Aslem	550	NA	14025	NA	NA	NA	NA	NA	NA	NA	NA
Taizz	At Ta'iziyah	540	3000	17150	47700	64850	Al Hudaydah	1/2	Al Hudaydah	1/3	NA	NA
Shabwah	Ataq	700	2600	25890	55900	81790	Aden	1/3	Taizz	3/3	Taizz	3/3
Sana'a City	Ath'thaorah	540	1167	9936	37600	47536	NA	NA	Aden	3/3	Hadramaut	3/3
Sana'a City	Az'zal	540	1167	9936	38600	48536	Sana'a	3/3	Sana'a	3/3	Sana'a	3/3
Al Hudaydah	Bajil	550	2000	13225	39675	52900	Sana'a	3/3	Sana'a	3/3	Sana'a	3/3
Hajjah	Bani Al Awam	NA	NA	NA	NA	NA	Al Hudaydah	3/3	Al Hudaydah	3/3	Al Hudaydah	3/3
Sana'a City	Bani Al Harith	540	1167	9936	37400	47336	NA	NA	NA	NA	NA	NA
Hajjah	Bani Qa'is	540	2000	13375	NA	NA	Sana'a	3/3	Sana'a	3/3	Sana'a	3/3
Al Hudaydah	Bayt Al Faqiah	540	2000	12775	40500	53275	Al Hudaydah	3/3	Al Hudaydah	3/3	Al Hudaydah	3/3
Aden	Craiter	560	1400	14710	58975	73685	Al Hudaydah	3/3	Al Hudaydah	3/3	Al Hudaydah	3/3
Dhamar	Dhamar City	540	1000	10725	46950	57675	Aden	3/3	Aden	3/3	Aden	3/3
Taizz	Dimnat Khadir	545	3000	17550	50450	68000	NA	NA	Dhamar	2/3	Dhamar	3/3
Lahj	Habil Jabr	650	2000	16100	69250	85350	Taizz	1/2	Taizz	3/3	Taizz	3/3
							Aden	3/3	Aden	3/3	Aden	3/3

CONT.

Governorate	District	Petrol price	Water Trucking	SMEB WASH	SMEB Food	SMEB Total	Fuel: Supplier Governorate	Fuel: Total number of respondents^	WASH: Supplier Governorate	WASH: Total number of respondents^	Food: Supplier governorate	Food: Total number of respondents^
Hajjah	Hajjah City	550	NA	15525	NA	NA	Al Jawf	2/3	Sana'a city	2/3	Sana'a city	2/3
Taizz	Jabal Habashy	730	NA	22770	71238	94008	Lahj	3/3	Taizz	2/2	Taizz	2/2
Amran	Jabal lyal Yazid		1200	10035	NA	NA	NA	0/	Amran	3/3	Amran	3/3
Abyan	Khanfir	670	2250	16599	67500	84099	Aden	2/3	Abyan	4/5	Abyan	4/5
Aden	Khur Maksar	560	6000	28525	64650	93175	Aden	3/3	Aden	3/3	Aden	3/3
Hajjah	Kuhlan Affar	600	2000	12775	NA	NA	Al Hudaydah	1/3	Amran	2/3	Amran	2/3
Hajjah	Kuhlan Ash Sharaf	600	4643	20885	NA	NA	Sana'a	3/3	Hajjah	3/3	Hajjah	3/3
Sana'a City	Ma'ain	425	1200	10045	39450	49495	Al Hudaydah	3/3	Sana'a	3/3	Sana'a	3/3
Marib	Marib City	NA	NA	NA	62854	NA	NA	NA	Marib	6/9	Marib	6/9
Taizz	Mawza	715	NA	22918	69804	92722	Aden	3/3	Aden	3/3	Aden	3/3
Hajjah	Najrah	NA	2750	15538	NA	NA	Al Hudaydah	1/3	Al Hudaydah	3/3	Al Hudaydah	2/3
Al Dhale'e	Qa'atabah	668	4000	21591	74350	95941	Aden	6/6	Aden	6/6	Aden	9/9
Lahj	Radfan	660	2000	15563	68050	83613	Aden	3/3	Aden	3/3	Aden	3/3
Taizz	Salh	750	3833	23699	85125	108824	Aden	3/3	Aden	3/3	Aden	3/3
Hadramaut	Sayun	NA	NA	NA	NA	NA	NA	NA	NA	NA	NA	NA
Hadramaut	Tarim	NA	NA	NA	NA	NA	NA	NA	NA	NA	NA	NA
Lahj	Tuban	560	2000	16585	75225	91810	Aden	5/6	Aden	6/6	Aden	5/6
Al Hudaydah	Zabid	550	NA	13370	41600	54970	Al Hudaydah	3/3	Al Hudaydah	3/3	Al Hudaydah	3/3

*NA (not applicable) data was not available.

^If the number is 4/10 (e.g), this indicates that 10 vendor KIs were interviewed, and of this, 4 answered the supply question.

The supplier governorate indicates the most prevalent answer. In the case of a tie, both governorates are shown.

The table shows SMEB values and supply chains inside the same governorate and towards other governorates. Districts without a main supplier are those districts where vendor KIs could not identify the origin of the items they sold.

APPENDIX

What is the cash and markets working group (CMWG)?

With the emergence of the conflict in 2014, humanitarian actors in Yemen began using cash and vouchers as a response tool to meet the immediate needs of the Yemeni population. The CMWG was established to provide a platform for discussion and setting standards/recommendations on cash and market-based responses (inclusive of cash and vouchers) for the cash actors in Yemen. The JMIMI was developed by the CMWG, the WASH Cluster, and REACH in order to harmonize price monitoring amongst WASH actors in Yemen.

Additional information on methodology

To be assessed by the JMIMI, markets must be either a single permanent market, or a local community where multiple commercial areas are located in close proximity to one another. When possible, markets/shops are selected within a single geographical location, where there is at least one wholesaler operating in the market.

Participating organisations train their enumerators on the JMIMI methodology and data collection tools using standard training materials developed by REACH. Each month, enumerators conduct KI interviews with market vendors to collect three price quotations for each item from the same market in each district. In addition to price levels, vendors are asked about the location of their supplier, the number of days it takes to restock the items, and the constraints they are facing in purchasing and selling the items in question. Additional questions are included for water trucking, to gauge the impact of delivery distance upon price level.

Following data collection, REACH compiles and cleans all partner data, normalising prices and cross-checking outliers. The cleaned data is then analysed by commodity and by governorate. To illustrate local variations in prices and availability, REACH uses the collected data to map the price of each type of item in each district. REACH also calculates the WASH SMEB (Survival Minimum Expenditure Basket), which is composed of four items: soap (1.05 kg), laundry powder (2 kg), sanitary napkins (50 units) and water trucking (3.15 m³). Food SMEB contains 75 kg of wheat flour, 10 kg of beans (kidney), 8L of vegetable oil, 2.5 kg of sugar, and 1 kg iodized salt.

The cleaned data sets are available on the [REACH Resource Centre](#) and are distributed to all participating partners, as well as to relevant clusters and the broader humanitarian community.

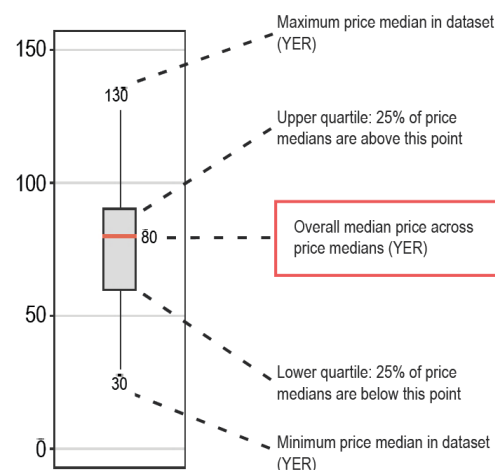
Limitations

Due to issues of access and security across Yemen, the districts included in the JMIMI vary on a monthly basis, and as such there are sometimes a limited number of districts for which trends can be assessed over time. Governorate level data is aggregated from the respective districts assessed in a given month, and so the findings are not representative of individual markets. Finally, the market monitoring process has been coordinated remotely by REACH, which inherently presents some challenges in terms of coordination and follow-up with partners. Participating organisations are therefore requested to adopt harmonised data collection methodologies and tools to ensure that the data uploaded is as accurate as possible.

Calculation of district and governorate median price

District, governorate and national median prices are calculated using data from all assessed markets. Percentage changes from one month to another are calculated only on data from markets that were assessed in both consecutive months. Therefore, part of the percentage variation could be attributed to changes in monthly coverage.

How to read a box plot



ABOUT REACH

REACH is a joint initiative that facilitates the development of information tools and products that enhance the capacity of aid actors to make evidence-based decisions in emergency, recovery and development contexts. By doing so, REACH contributes to ensuring that communities affected by emergencies receive the support they need. All REACH activities are conducted in support to and within the framework of inter-agency aid coordination mechanisms. For more information, please visit our website at www.reach-initiative.org, contact us directly at nissa.berntsen@reach-initiative.org or follow us on Twitter at [@REACH_info](https://twitter.com/REACH_info).

Participating partners include



Number of districts assessed per governorate

Governorate	Assessed districts
Abyan	1
Aden	5
Al Dhale'e	3
Al Hudaydah	5
Al Jawf	1
Amran	2
Dhamar	1
Hajjah	6
Ibb	1
Lahj	6
Marib	1
Sana'a	1
Sana'a City	5
Shabwah	1
Taizz	11