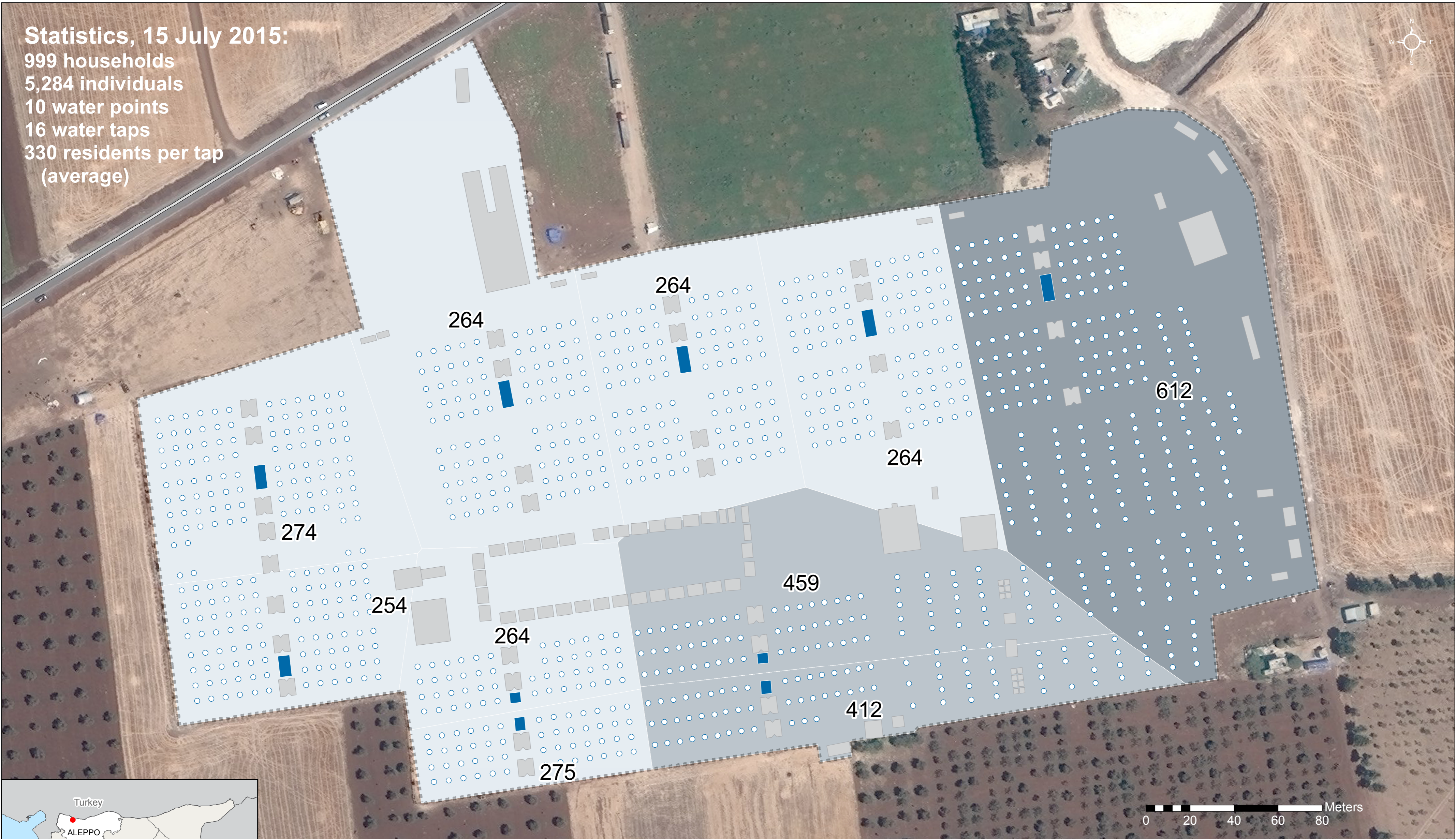


Statistics, 15 July 2015:

999 households
5,284 individuals
10 water points
16 water taps
330 residents per tap
(average)



Residents per Water Tap

Sphere standard:
Maximum of 250
residents per water tap

250 - 300	301 - 400	401 - 500	501 - 600	601 - 700
-----------	-----------	-----------	-----------	-----------

- Water points
- Other structures
- Shelters
- Roads
- Settlement Boundary

The polygons in the map above represent the **service areas** of each water point. A service area is defined as the area of land closer to that water point than to any other. All else being equal, camp residents will prefer to use the water point that is closest to their household.

Data sources:
 Imagery: © UNOSAT, 19 July 2015
 Administrative Boundaries: Common Operational Dataset
 Roads: © OpenStreetMap contributors
 Camp Boundary: UNOSAT
 Building Digitization: REACH
 Building Classification: REACH, NRC, World Vision
 Population Figures: CCCM Cluster, ISIMM July 2015
 Coordinate System: WGS 1984 UTM Zone 37N
 File: REACH_SYR_SujjoWaterPointServiceAreas_CCM_A2_11Sep2015_V2
 Contact: mena.reach@impact-initiatives.org

Note: Data, designations and boundaries contained on this map are not warranted to be error-free and do not imply acceptance by the REACH partners, associates or donors mentioned on this map.