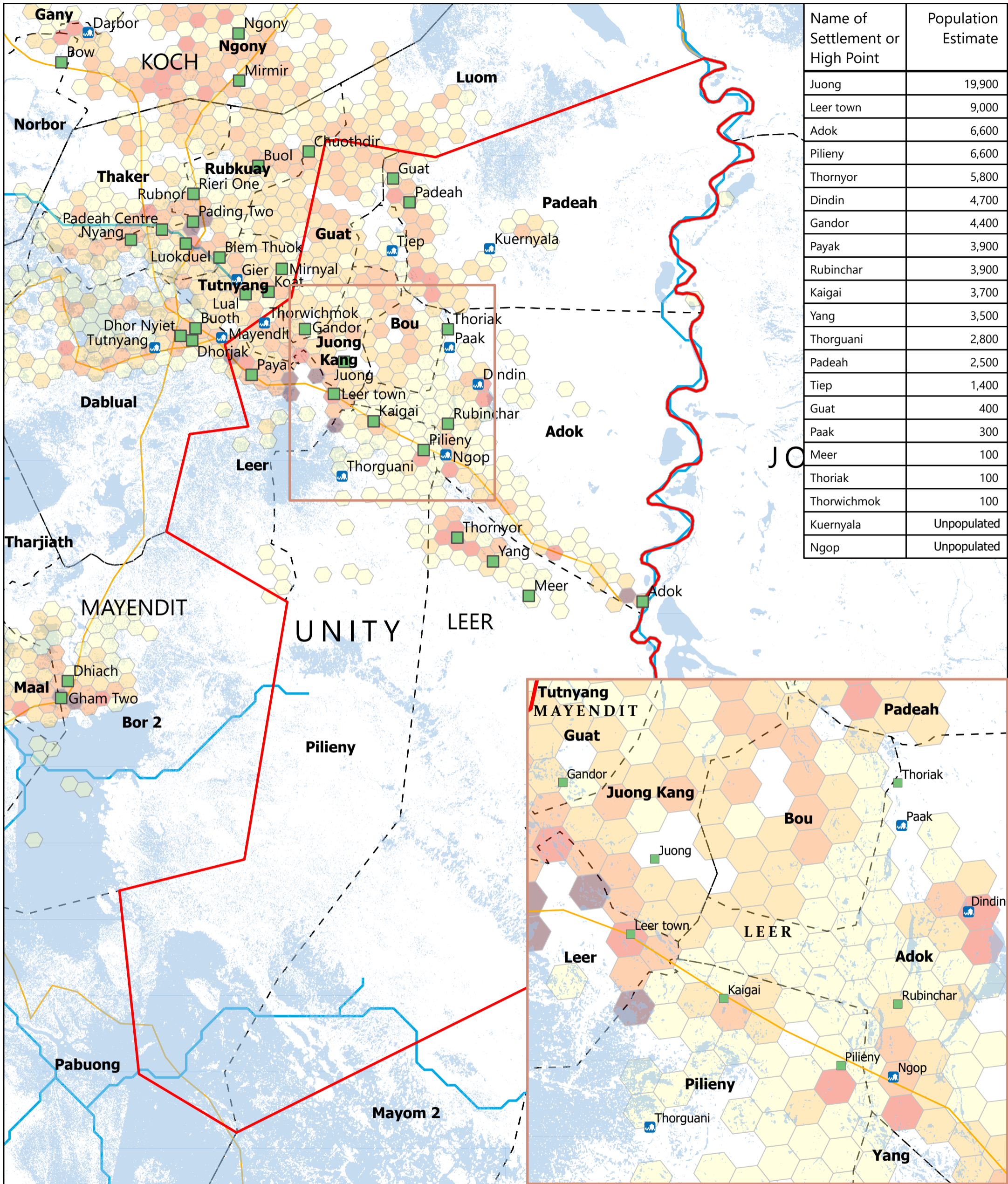


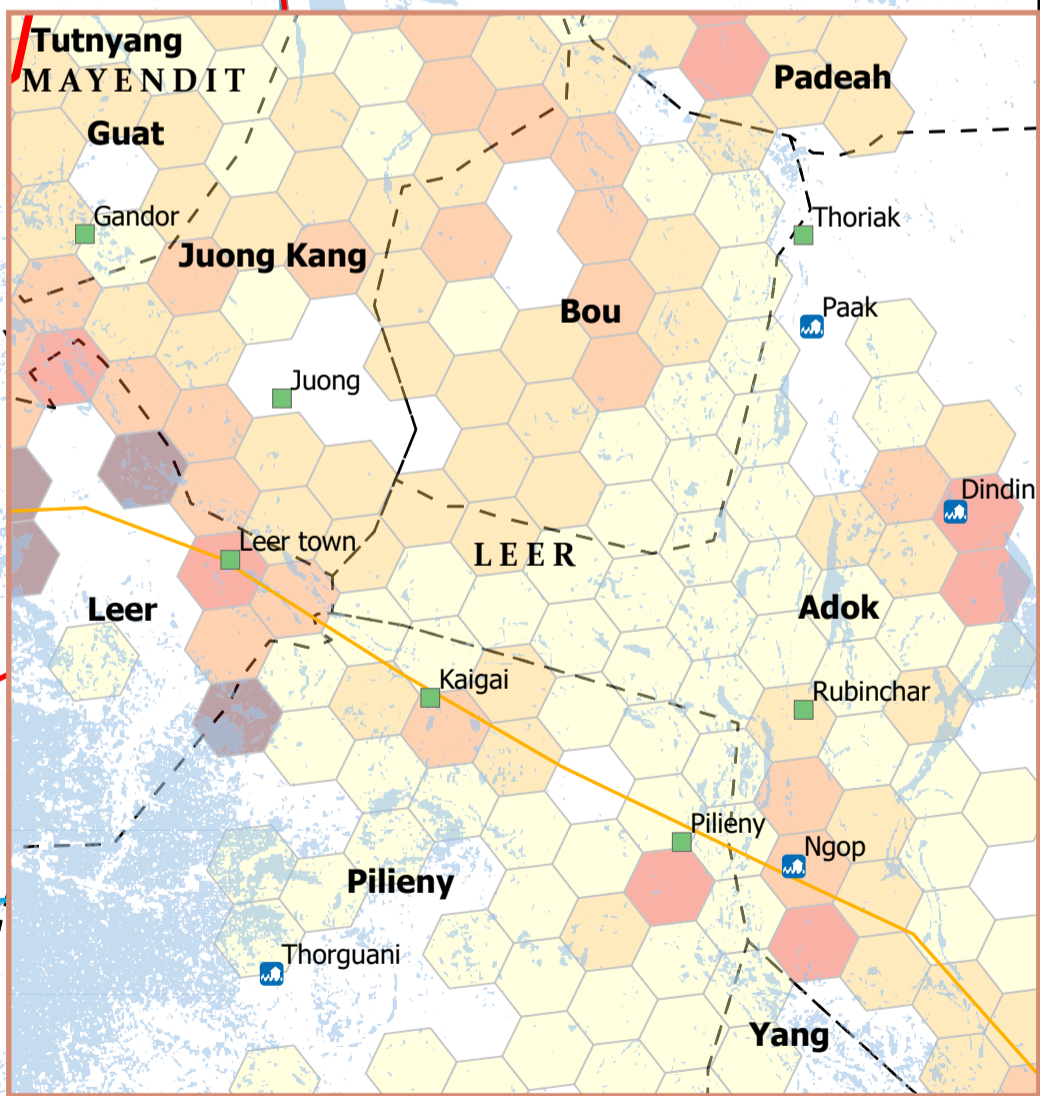
SOUTH SUDAN - Leer County

Flood overview (September 2025)

For Humanitarian Purposes Only
Production Date: 29 September 2025



Name of Settlement or High Point	Population Estimate
Juong	19,900
Leer town	9,000
Adok	6,600
Pilieny	6,600
Thornyor	5,800
Dindin	4,700
Gandor	4,400
Payak	3,900
Rubinchar	3,900
Kaigai	3,700
Yang	3,500
Thorguani	2,800
Padeah	2,500
Tiep	1,400
Guat	400
Paak	300
Meer	100
Thoriak	100
Thorwichmok	100
Kuernyala	Unpopulated
Ngop	Unpopulated

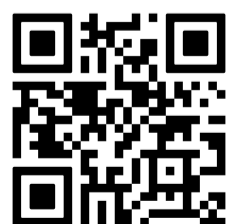
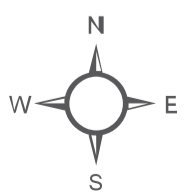


Population (Kontur, 2023)

- 1 - 100
- 101 - 250
- 251 - 500
- 501 - 750
- > 750

Legend:

- Flooded settlements
- Flooded Small Towns
- High Ground (OCHA 2024 & UNMISS 2025)
- Roads
- River
- Payam
- Focus County
- County
- State



Data sources: Source: REACH, OCHA, UNMISS, IOM_DTM, UNOSAT, FEWSNET
Coordinate System: Name: GCS WGS 1984
File: REACH_SSD_Map_Unity_Leer_Flood_29_Sept_2025
Contact: reach.mapping@impact-initiatives.org

Note: Data, designations and boundaries contained on this map are not warranted to be error-free and do not imply acceptance by REACH partners, associates or donors mentioned on this map.