

Rapid Response Mechanism: Central African Republic



12 01 - 30 November 2015
Monthly factsheet



The Rapid Response Mechanism (RRM) is a tool to monitor humanitarian action, conduct multisector assessments and intervene in NFI and WASH when there is no capacity on site. The RRM is made possible through the generous support of the CERF, CHF, Denmark, European Commission's Humanitarian Aid and Civil Protection (ECHO), Global Thematic, IFRC, OFDA, Portugal, SDC and SIDA. All RRM products are available on the [Humanitarian Response](#) portal.

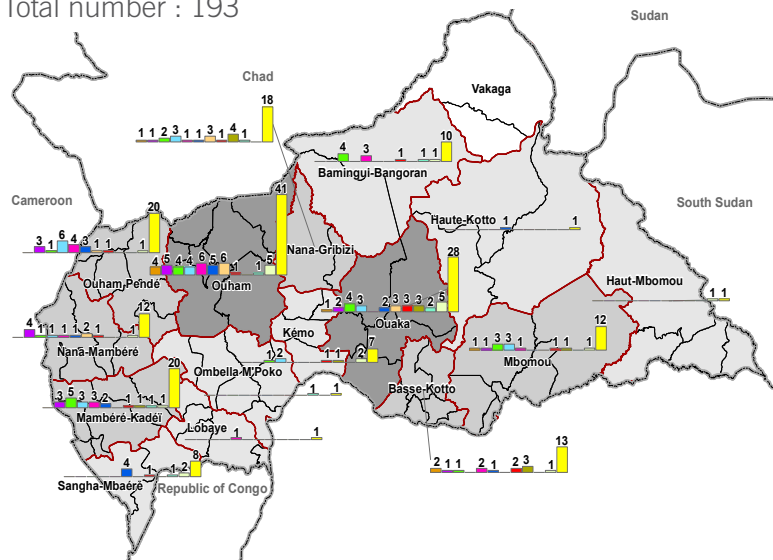
Activities : January - November 2015

Ongoing activities are not taken into account.
The WASH package is adapted to the priority needs identified at each answer.

Exploratory missions (MEX)	88
Multisectoral assessments MSA)	90
NFI Distributions	44
WASH Interventions	30
Hygiene sessions	127
Built emergency latrines	265
Rehabilitation of water sources	43

Alerts received or sent by the RRM in 2015

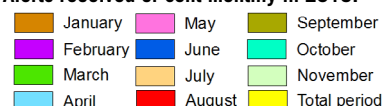
Total number : 193



Beneficiaries : January-November 2015

NFI (beneficiaries)	154,190
NFI (households)	29,545
WASH (beneficiaires)	65,248

Alerts received or sent monthly in 2015:

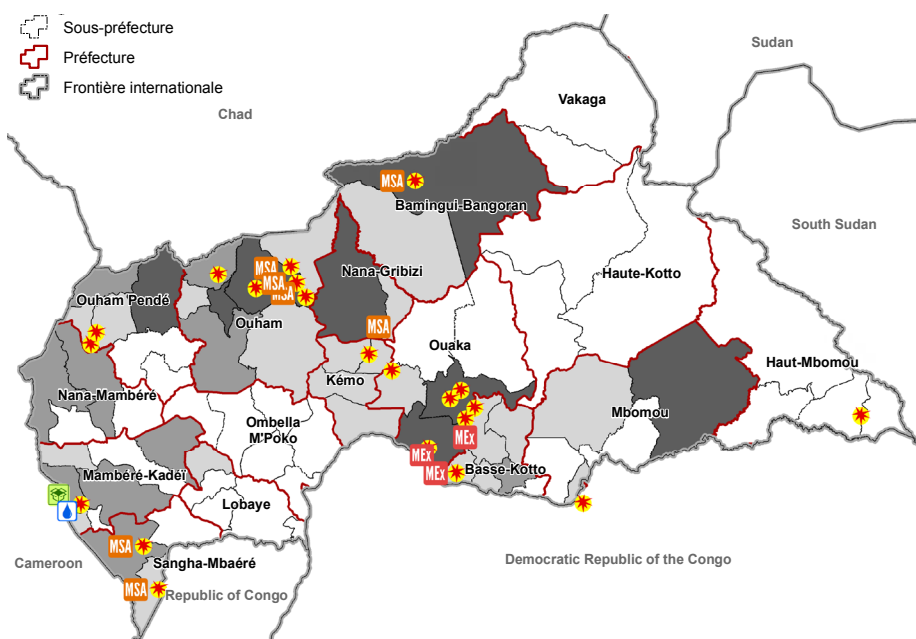
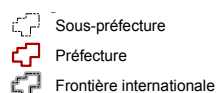


Number of alerts:

January - November 2015



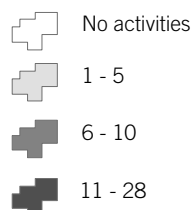
Overview of RRM activities in 2015



Activities completed : November 2015

- Alerts (21)
- Exploratory missions (MEX) (3)
- Multi-sectoral assessments (MSA) (7)
- NFI Distributions NFI (1)
- WASH Interventions (1)

Total number of activities (MEX, MSA et interventions): January - November 2015



For more information, please contact :
RRM Coordinator, Christine Guinot: cguinot@unicef.org
RRM Specialist, Jaime Buch: jbuch@unicef.org

REACH An initiative of
IMPACT Initiatives
ACTED and UNOSAT

Number of beneficiaries

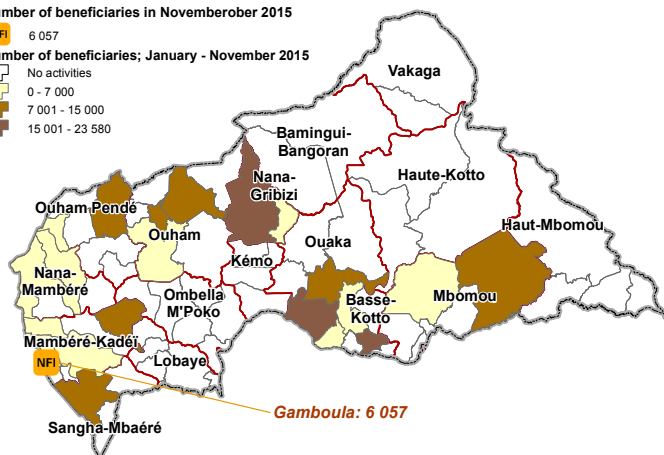
NFI : 6,057 beneficiaries in November 2015

Number of beneficiaries in November 2015

NFI 6 057

Number of beneficiaries; January - November 2015

No activities
0 - 7 000
7 001 - 15 000
15 001 - 23 580



Gamboula: 6 057

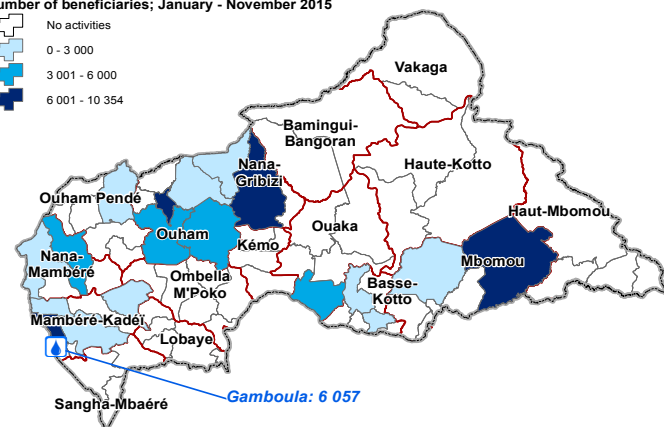
WASH : 6,057 beneficiaries in November 2015

Number of beneficiaries in November 2015

WASH 6 057

Number of beneficiaries; January - November 2015

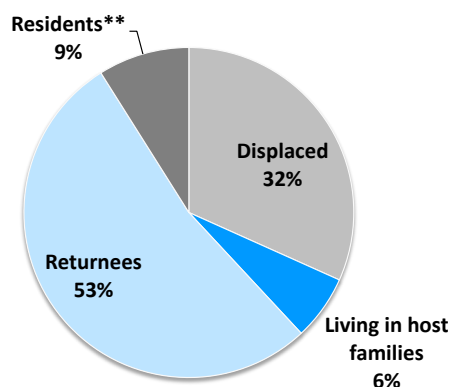
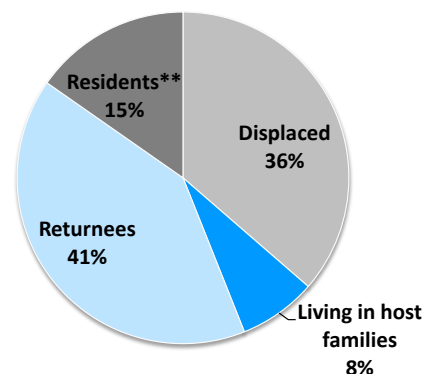
No activities
0 - 3 000
3 001 - 6 000
6 001 - 10 354



Gamboula: 6 057

RRM in action

Status of beneficiaries : January - November 2015



NB: The term 'residents' refers to individuals that have not been displaced as the result of a humanitarian-related event and are not hosting anyone in their home.

NB: The term 'host family' refers to families who are hosting displaced, returnee or refugee persons in their home.

**Due to the absence of recent population data in the majority of communities in CAR, these figures are estimations.

Results of the post-distribution monitoring : January - November 2015

The 21 PDMs made between January and November 2015 have provided the following answers to the question about the overall beneficiary satisfaction with NFIs received:

- 82% Completely satisfied
- 14% Moderately satisfied
- 3% Dissatisfied
- 1% Not satisfied at all

