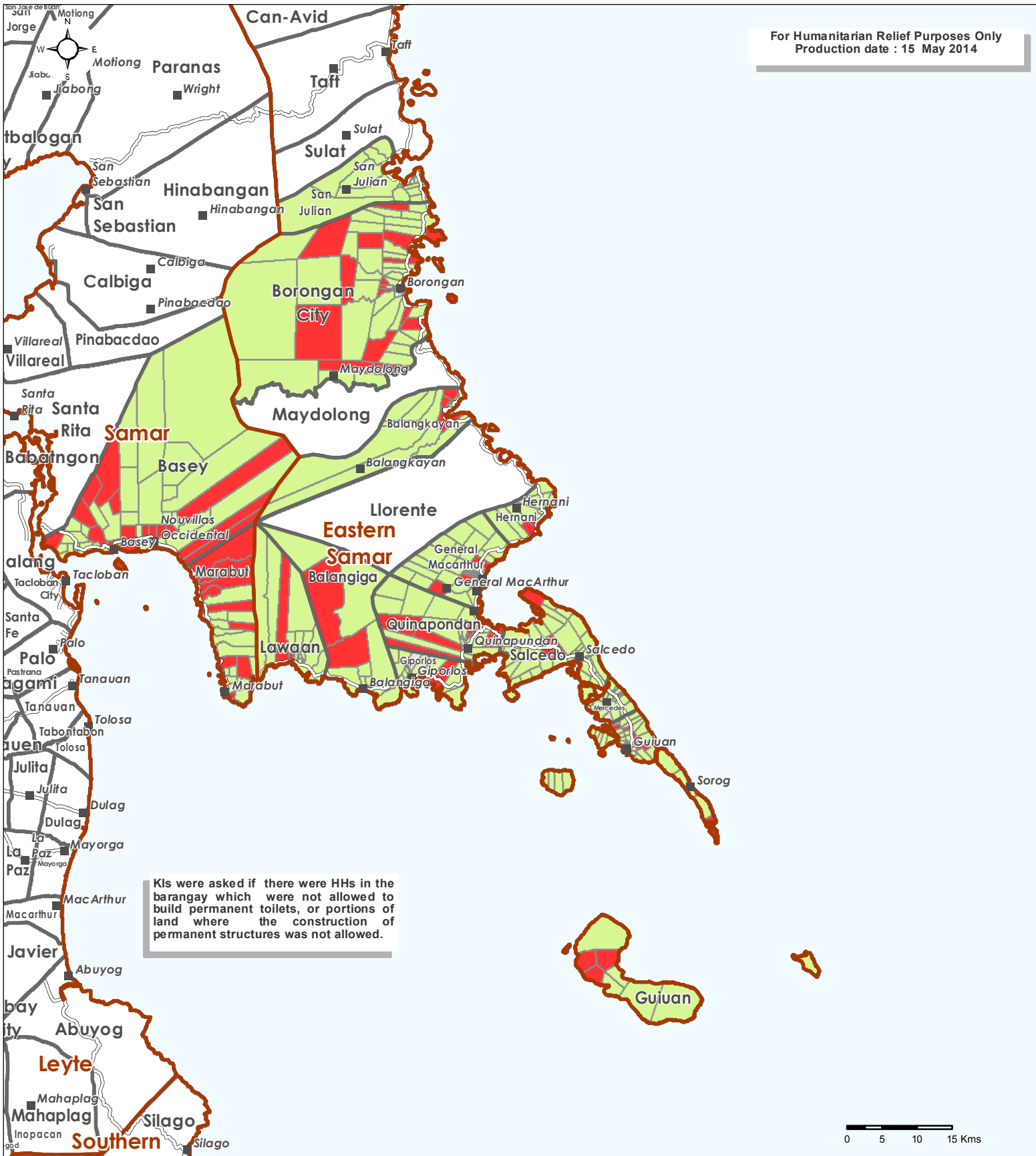
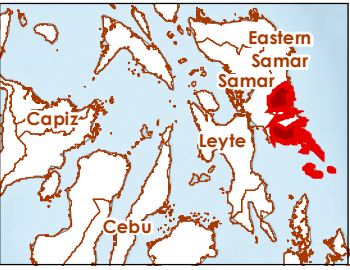
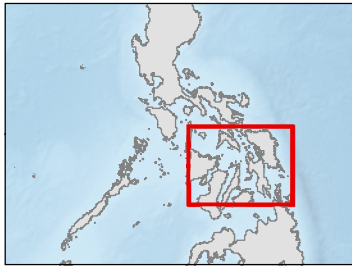


For Humanitarian Relief Purposes Only  
Production date : 15 May 2014



KIs were asked if there were HHs in the barangay which were not allowed to build permanent toilets, or portions of land where the construction of permanent structures was not allowed.



- Land Tenure is an issue for Toilet Construction**
- No
  - Yes
  - Do not know
  - Provinces
  - Municipalities

Data sources:  
WASH Assessment: REACH / WASH Cluster  
Administrative Boundaries: OCHA COD  
Cities and Roads: OSM  
File: PHL\_LatrineLandTenure\_Prov\_Samar\_15MAY2014\_A4  
Contact: reach.mapping@impact-initiatives.org

Note: Data, designations and boundaries contained on this map are not warranted to error-free and do not imply acceptance by the REACH partners, associated donors mentioned on this map.

All maps available at <http://philippines.humanitarianresponse.info/>