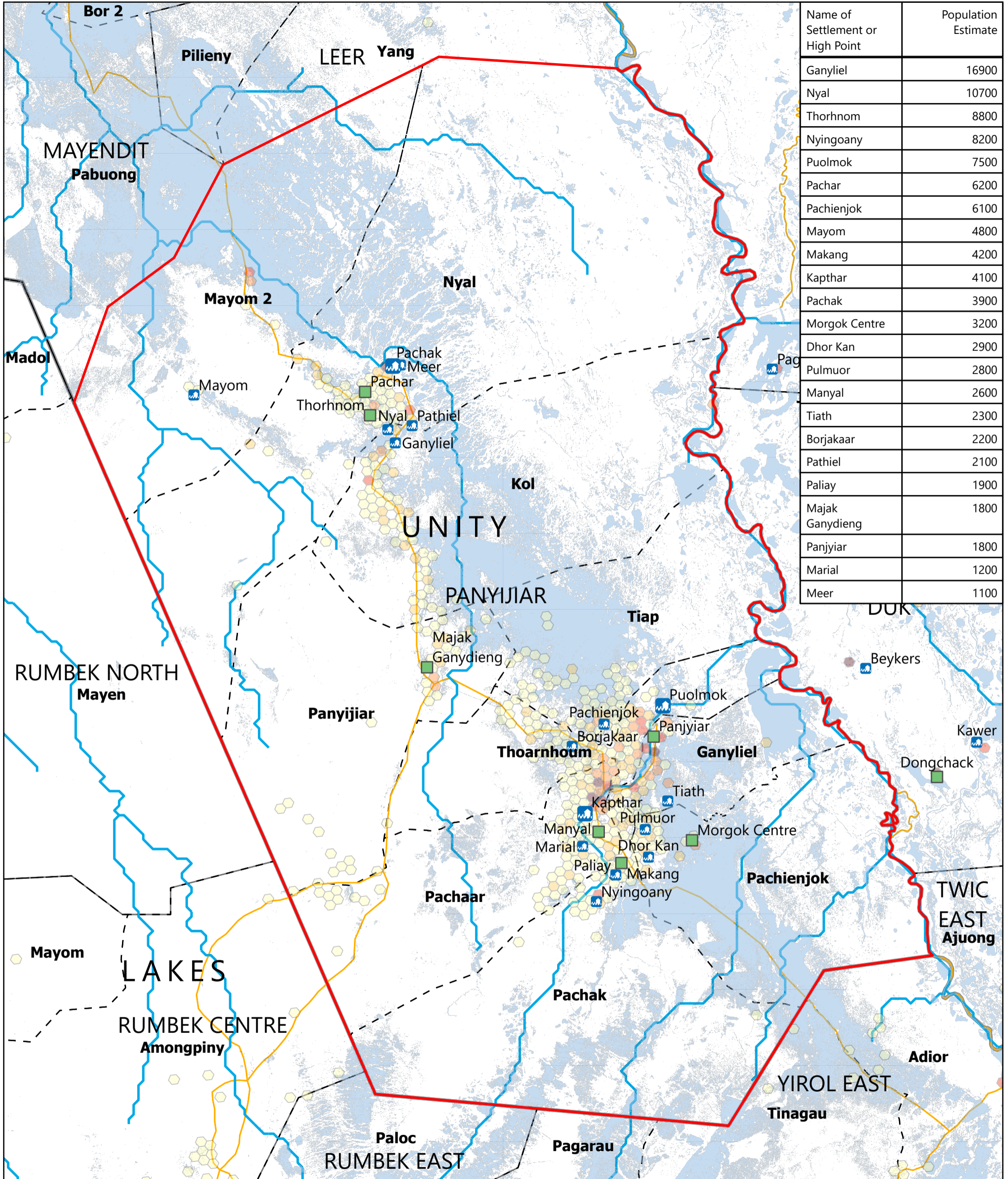


# SOUTH SUDAN - Panyijiar County

## Flood overview (September 2025)

For Humanitarian Purposes Only  
Production Date: 29 September 2025



Name of Settlement or High Point	Population Estimate
Ganyliel	16900
Nyal	10700
Thorhnom	8800
Nyingoany	8200
Puolmok	7500
Pachar	6200
Pachienjok	6100
Mayom	4800
Makang	4200
Kapthar	4100
Pachak	3900
Morgok Centre	3200
Dhor Kan	2900
Pulmuor	2800
Manyal	2600
Tiath	2300
Borjakaar	2200
Pathiel	2100
Paliay	1900
Majak Ganydieng	1800
Panjyiar	1800
Marial	1200
Meer	1100



Population (Kontur, 2023)

1 - 100
101 - 250
251 - 500
501 - 750
> 750

Satellite-detected flood extent (FEWSNET, as of 30th August 2025)

- Flooded settlements
- Flooded Small Towns
- High Ground (OCHA 2024 & UNMISS 2025)
- Roads
- River
- Payam
- Focus County
- County
- State

0 5 10 Km

Data sources: Source: REACH, OCHA, UNMISS, IOM\_DTM, UNOSAT, FEWSNET  
 Coordinate System: Name: GCS WGS 1984  
 File: REACH\_SSD\_Map\_Unity\_Panyijiar\_Flood\_29\_Sept\_2025  
 Contact: reach.mapping@impact-initiatives.org

Note: Data, designations and boundaries contained on this map are not warranted to be error-free and do not imply acceptance by REACH partners, associates or donors mentioned on this map.

