



IDP Camp Profile - Arbat IDP

Sulaymaniyah, Iraq

April 2016

Management agency: Government
Manager/Focal point: Tariq Ahmad
Phone number: 7701592905
Email: Idpcamp@yahoo.com
Registration actor: BCF

Summary

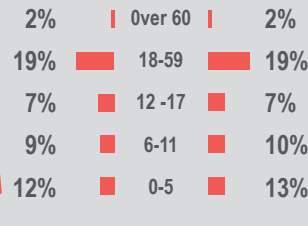
This profile provides an overview of conditions in Arbat IDP camp. Primary data was collected through household surveys on 18-04-16. Households were randomly sampled to a 95% confidence and 10% margin of error, based on population figures provided by CCCM. In some cases, additional information from camp managers has been used to support findings. Round IV of data collection was in December 2015.

Camp Overview

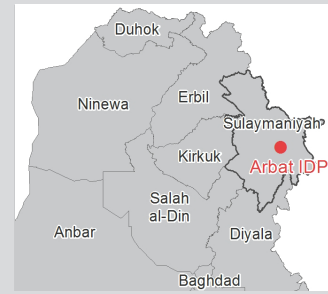
of individuals: 2066
of households: 405
Date opened: 04-09-14
Occupied number: 409
Ongoing extension: no
Planned capacity: 409
Camp area: 190892m²

Demographics

49% male / 51% female

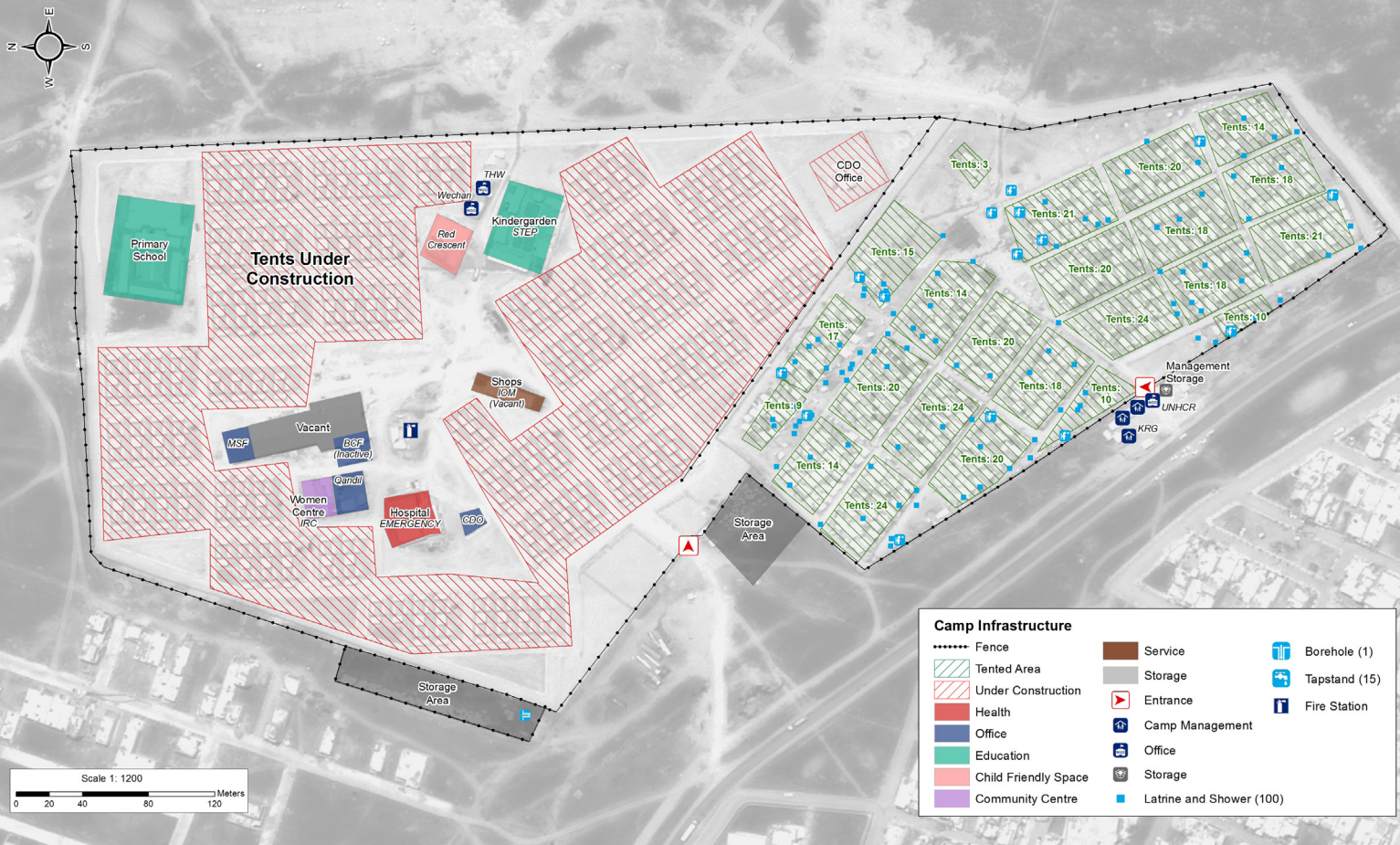


Location Map



IDP Camp Map - Arbat IDP

Lat. 35° 25' 55.395" N Long. 45° 35' 24.967" E



Sectoral Minimum Standards

		Target	Previous Round	Current Round	Achievement
Education	% of children aged 6-11 attending formal school	100%	80%	71%	●
	% of children aged 12-17 attending formal school	100%	50%	85%	●
Food	% of households accessed Family Food Parcel or equivalent in the past month	100%	97%	79%	●
Health	Health services are available on-site or within walking distance	Yes	Yes	Yes	●
CCCM	Average open area per household	min. 30m ²	212 m ²	150m ²	●
Protection	% of IDPs registered on an individual basis (MODM/DDM)	100%	100%	99%	●
	% of households accessed shelter assistance since arrival at the camp	100%	93%	59%	●
	Average covered area per person	min. 3.5m ²	3.3 m ²	3.3m ²	●
Shelter	Average number of individuals per shelter	max.5	5	5	●
	# of persons per latrine	max. 20	44	12	●
	# of persons per shower	max. 20	35	29	●
WASH	Frequency of solid waste disposal at least weekly	min. weekly	Yes	Yes	●

*GPS tracking of camp infrastructure was not possible this round due to restrictions from authorities. Area calculations subsequently could not be determined.

Targets based on minimum standards agreed with the CCCM Cluster, Iraq. Findings based on household-level data, enumerator field observations, and camp management documentation

● Minimum standard reached, ● More than 50% minimum standard reached, ● Less than 50% of minimum standard reached or not at all



CCCM CLUSTER
SUPPORTING DISPLACED COMMUNITIES

For more information on this profile please contact:
CCCM Cluster: iraqimo@ccmcluster.org
REACH Initiative: melissa.meinhart@reach-initiative.org

REACH An initiative of
IMPACT Initiatives
ACTED and UNOSAT



IDP Camp Profile - Arbat IDP

Sulaymaniyah, Iraq

April 2016

Management agency: Government
Manager/Focal point: Tariq Ahmad
Phone number: 7701592905
Email: ldpcamp@yahoo.com
Registration actor: BCF

Shelter

Top three observed shelter types*

Tent on ground	100%	
Tent on cement base	n/a	
n/a	n/a	

*Households were asked to select all shelter typologies within household.

NFI items

48%	reported a second fly sheet
89%	reported access to an air conditioner
3	average number of carpets per HH
5	average number of mattresses per HH

Hazards

4%	reported exposed electrical cables at site
----	--

Shelter Improvement

26%	reported making own improvements to their shelter
-----	---

Households reporting flooding in past three months, by type

No flooding	32%	
Flooding (temporary damage)	59%	
Flooding (permanent damage)	9%	

Community Organisation

IDP committees

88%	reported awareness of IDP committee(s)
-----	--

Complaints mechanism

64%	reported awareness of complaints mechanism
-----	--

Protection

Family Separation

0%	reported hosting unaccompanied or separated minors
1%	reported that other family members intended to join them

Vulnerable groups

Pregnant / lactating women	31%	
Chronically ill individual(s)	6%	
Disabled individual(s)	3%	

Intentions

80%	planned to move to a different location in next 3 months
-----	--

Restrictions

9%	reported entry or exit restrictions during daylight hours
----	---

Food Security and Coping Strategies

Reported access to food assistance

79%	accessed food assistance in past month
88%	received Public Distribution System (PDS) in past month

Top three food consumption coping strategies

Cheaper Food	52%	
Less meals	32%	
Borrowed Food	32%	

Top three reported livelihood coping strategies

Debt	47%	
Charitable Donations	32%	
Selling Assets	23%	

WASH

Latrines and showers

93%	reported public or communal latrines
74%	public/communal latrines lockable from the inside
16%	public/communal latrines with functioning lighting

Top three reported methods of waste removal

Collected	100%	
n/a	n/a	
n/a	n/a	

Reported drinking water sources

0%	connection inside the home to collective water storage
0%	connection inside the home to private water storage
100%	communal water tap outside the shelter

Access to water

3%	reported 24 consecutive hours without access to water in the past month
----	---

Household Income

5%	reported as being economically inactive
----	---

Top three income sources*:

Unskilled Labour	47%	
Humanitarian aid	41%	
Government aid	9%	

*Households were asked to select all income sources within household.

