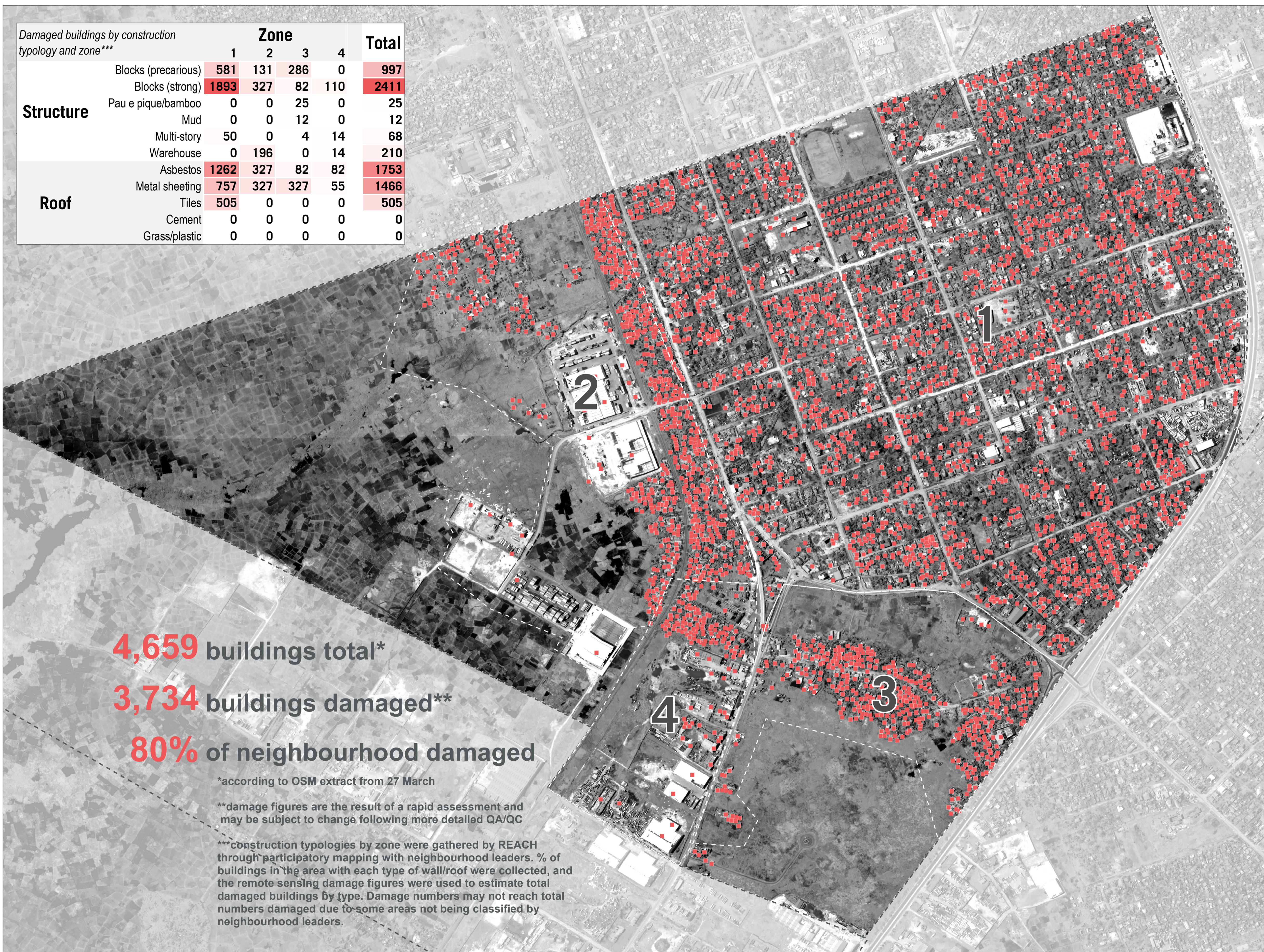


MOZAMBIQUE - Beira City

Alto de Manga - Structural Damage by Construction Typology - As of 26 March

For Humanitarian Purposes Only
Production date: 30 April 2019

Damaged buildings by construction typology and zone***	Zone				Total
	1	2	3	4	
Structure					
Blocks (precarious)	581	131	286	0	997
Blocks (strong)	1893	327	82	110	2411
Pau e pique/bamboo	0	0	25	0	25
Mud	0	0	12	0	12
Multi-story	50	0	4	14	68
Warehouse	0	196	0	14	210
Roof					
Asbestos	1262	327	82	82	1753
Metal sheeting	757	327	327	55	1466
Tiles	505	0	0	0	505
Cement	0	0	0	0	0
Grass/plastic	0	0	0	0	0



4,659 buildings total*

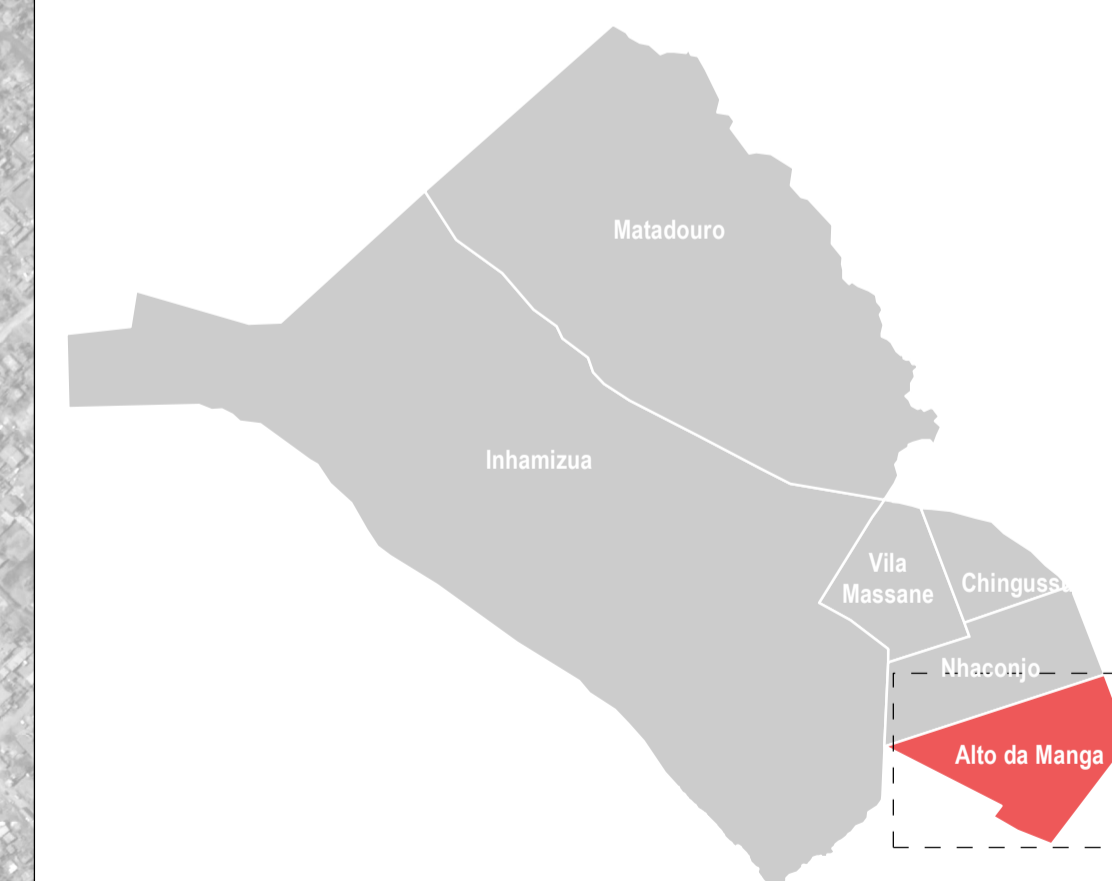
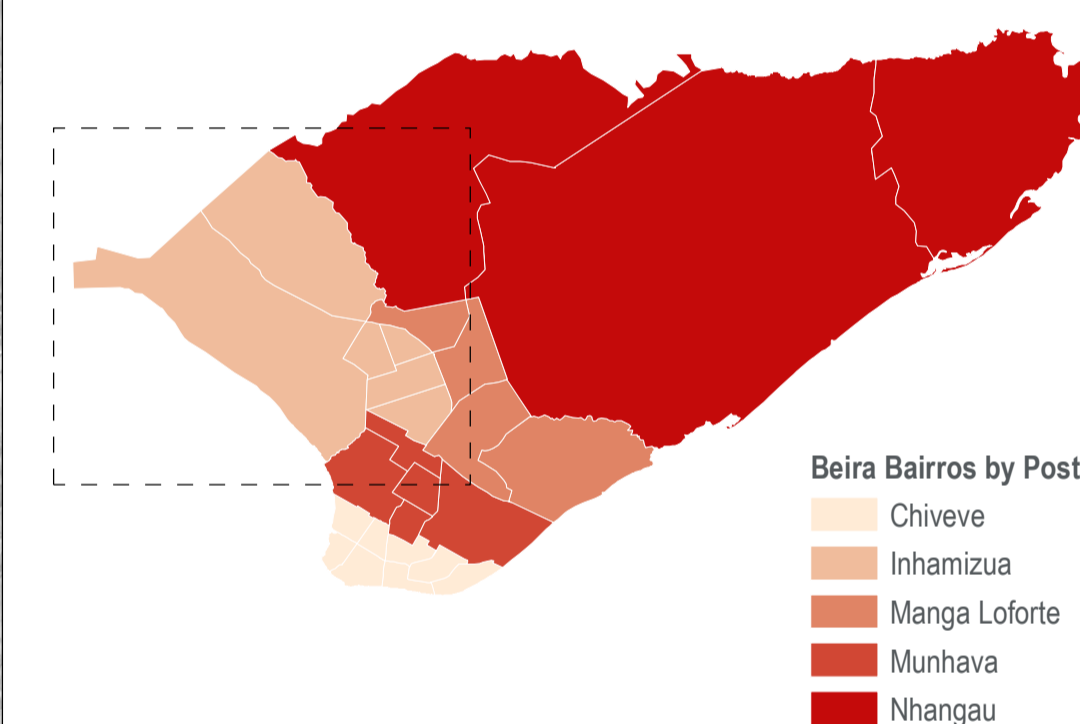
3,734 buildings damaged**

80% of neighbourhood damaged

*according to OSM extract from 27 March

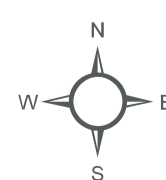
**damage figures are the result of a rapid assessment and may be subject to change following more detailed QA/QC

***construction typologies by zone were gathered by REACH through participatory mapping with neighbourhood leaders. % of buildings in the area with each type of wall/roof were collected, and the remote sensing damage figures were used to estimate total damaged buildings by type. Damage numbers may not reach total numbers damaged due to some areas not being classified by neighbourhood leaders.



Legend

- Damaged Buildings
- Bairros



Coordinate System: GCS WGS 1984
File: MOZ_Map_CycloneIdai_Beira_DamageByType_AltoDeManga_26APR2019
Contact: reach.mapping@impact-initiatives.org

Note: Data, designations and boundaries contained on this map are not warranted to be error-free and do not imply acceptance by the REACH partners, associated, donors mentioned on this map.



Funded by
European Union
Civil Protection and
Humanitarian Aid

REACH
An initiative of
IMPACT Initiatives
ACTED and UNOSAT