

## Summary

This profile provides an overview of water, sanitation and hygiene (WASH) infrastructure within Camp 5 in Ukhia, Cox's Bazar. Primary data for the sixth round was collected between 22 April - 12 May 2018.<sup>1</sup> Findings should be considered indicative only. The full camp dataset is available on [HDX](#).

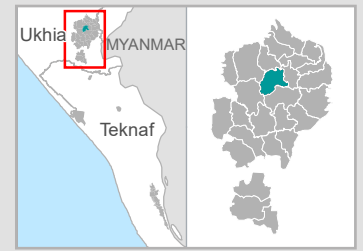
## Site Overview

# of individuals:	28,089
# of households:	6,769
# of shelters:	3,957
# of individuals per shelter:	7.1

## Key WASH Infrastructure

# of latrines: (% functional and safe <sup>2</sup> ):	1,143 (85%)
# of improved water sources: <sup>3</sup> (% functional):	462 (86%)
# of washrooms:	491

## Location Map






## Water Access

### Three most commonly identified types of water points, by functionality:



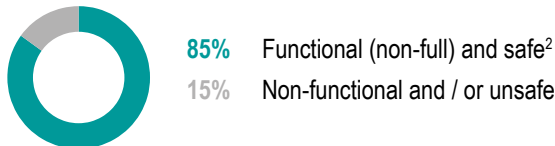
### Key sectoral standards:

	Target	Current Round	Achievement
# of people per functional improved water source <sup>3</sup>	max. 250	71	
% of shelters with at least 1 functional improved water source <sup>3</sup> within 200m	100%	100%	
% of functional improved water source with no latrine within 10m	100%	41%	

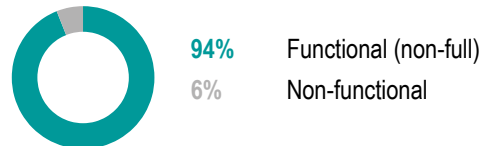
## Sanitation

### Latrine characteristics:

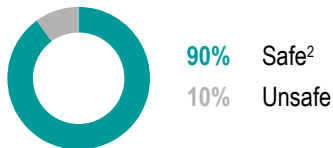
#### Functionality and safety



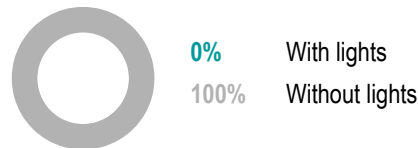
#### Functionality







#### Safety



#### Lighting



### Key sectoral standards:

	Target	Current Round	Achievement
# of people per functional (non-full) and safe latrine <sup>2</sup>	max. 20	29	
# of people per functional (non-full) latrine	max. 20	26	
# of people per safe latrine <sup>2</sup>	max. 20	27	
% of shelters with at least one functional and safe latrine <sup>2</sup> block within 50m	100%	98%	

Targets based on long term WASH Sector Standards / Indicators for the Rohingya response, Sphere Minimum Standards as well as Department of Public Health and Environment (DPHE) Minimum Standards. ● Minimum standard/indicator reached, ● 75-99% of the minimum standard reached, ● 50-74% of the minimum standard reached, ● 26-50% of minimum standard reached, ● Less than 50% of minimum standard reached, or within greater than 50% of minimum standard reached.

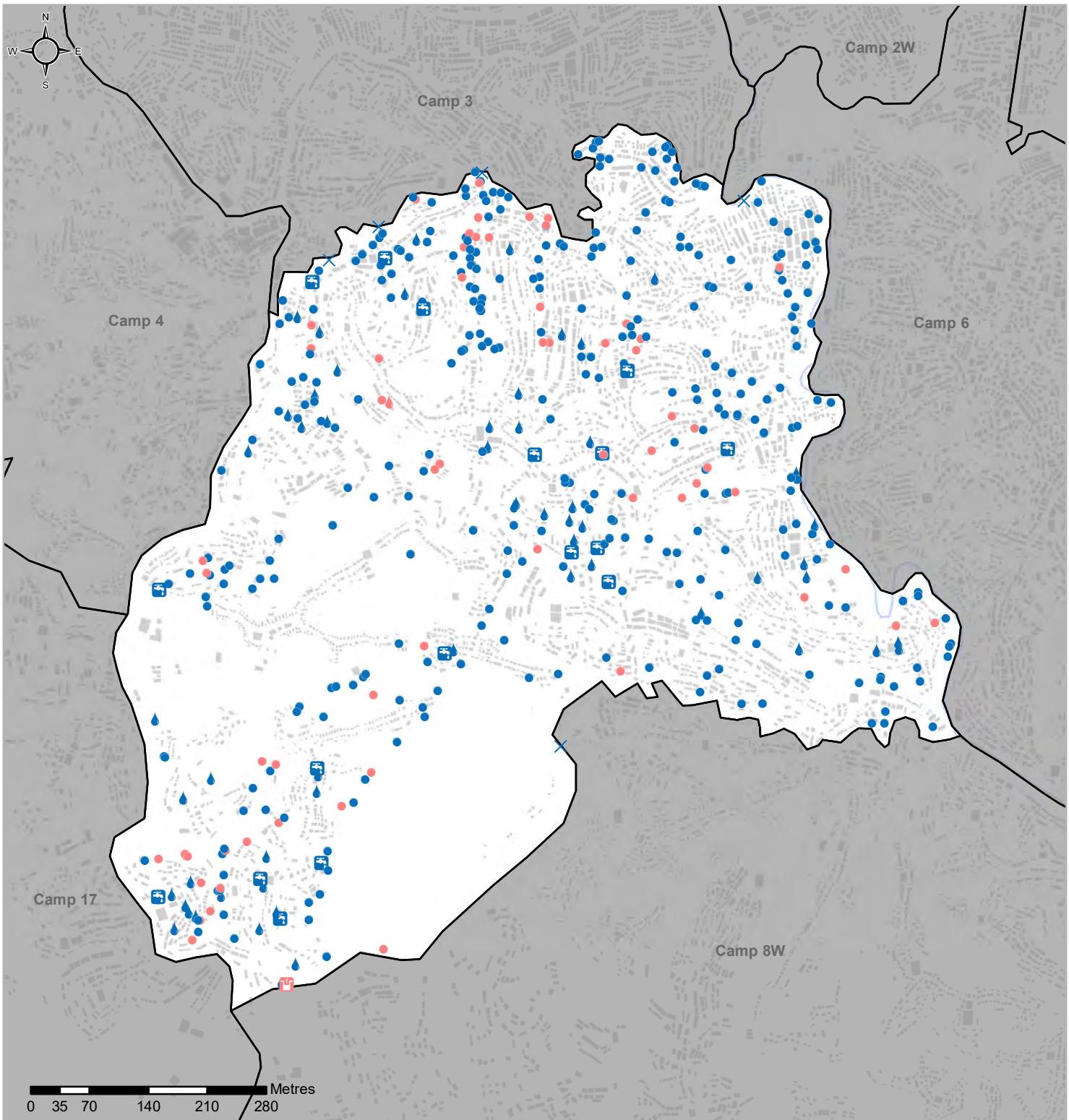
<sup>1</sup> REACH enumerators conducted a full sweep of all sites and camps (as per boundaries defined by ISCG) and used a Kobo form to log all key infrastructure observed during this sweep.

<sup>2</sup> 'Safe' refers to fully covered latrines (i.e. a latrine with four walls, a roof and a lockable door).

<sup>3</sup> This includes handpumps / tubewells, tapstands and water tanks.



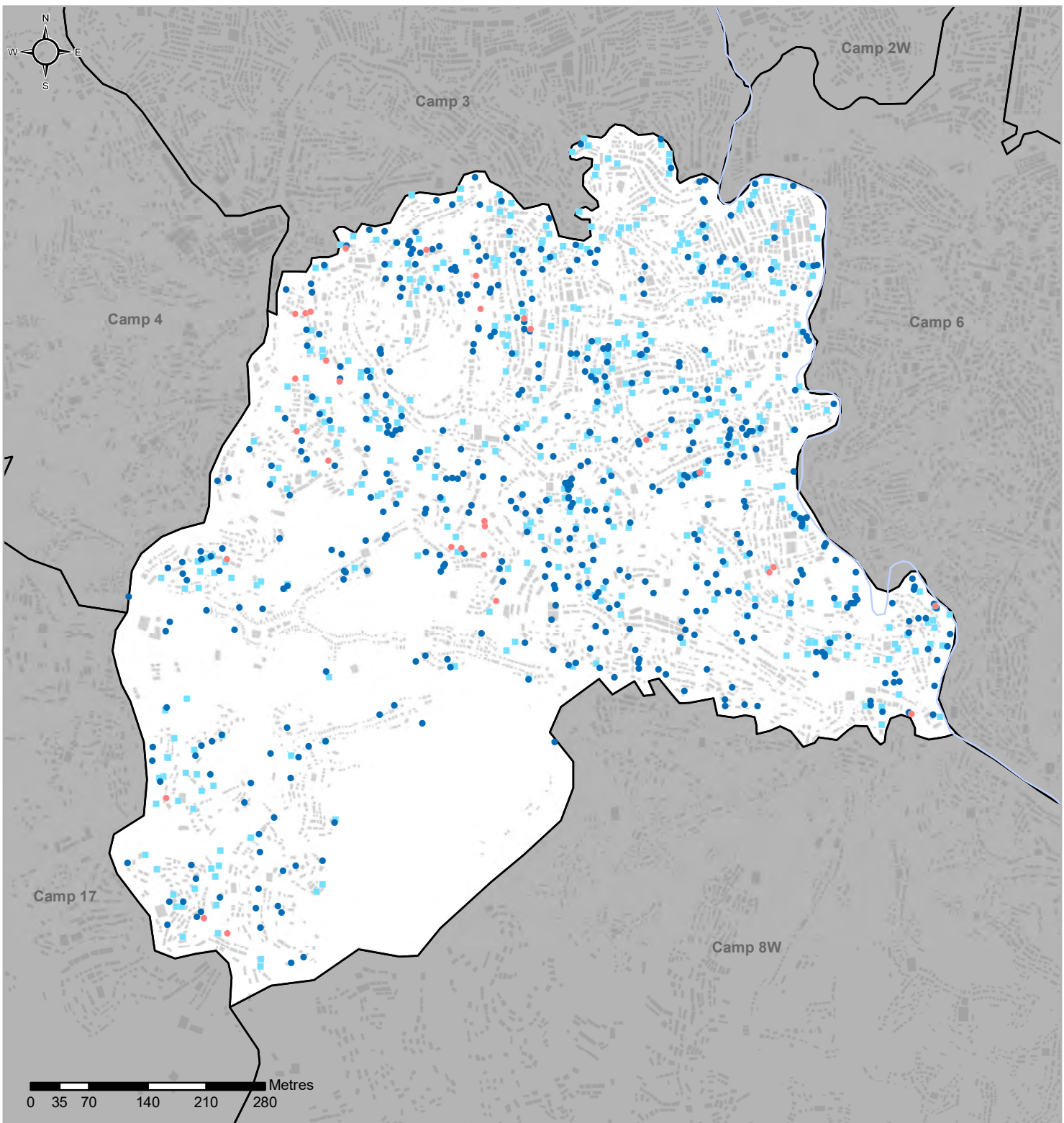
## Water Access



	Functioning	Non-functioning		
Hand pump / tubewell	324	61	Shelter	
Tapstand	17	0	Camp boundary	
Well	0	1	River	
Water tank	57	1	<i>The boundaries and names used on this map do not imply official endorsement or acceptance by the United Nations</i>	
Unimproved water source	5	0		



## Sanitation



	<b>Functioning</b>	<b>Non-functioning</b>	
Latrines	<span style="color: blue;">●</span> 488	<span style="color: red;">●</span> 30	Shelter
WASH rooms	<span style="color: lightblue;">■</span> 403		Camp boundary
			River

The boundaries and names used on this map do not imply official endorsement or acceptance by the United Nations