



Introduction

While an estimated 2.1 million people live in displacement sites in Somalia¹, existing information on exact locations and site level vulnerabilities is sparse, and existing assessments have been ad-hoc and unharmonised, resulting in low comparability and verification.

The Detailed Site Assessment (DSA) was triggered in coordination with the Camp Coordination and Camp Management (CCCM) Cluster in order to provide the humanitarian community with up-to-date information on location of internally displaced persons (IDP) sites, the conditions and capacity of the sites and the humanitarian needs of the residents.

Target locations for assessment were selected based on needs identified by the CCCM Cluster

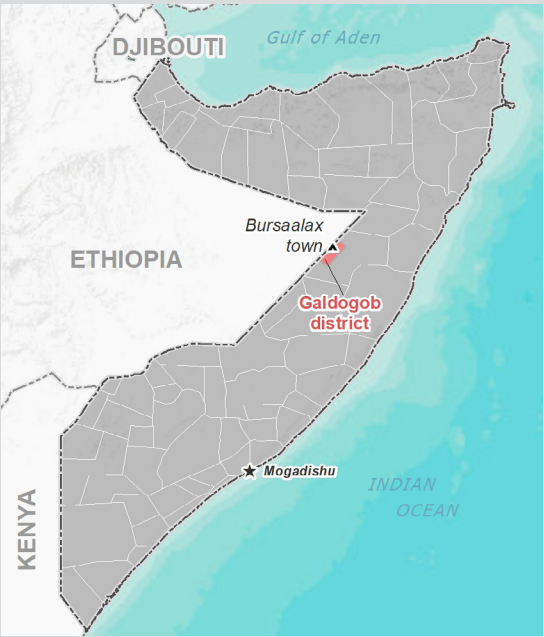
and accessibility for data collection.

A grid pattern approach² was applied during data collection to ensure that all IDP sites in the target area were identified. In each site, two key informant (KI) interviews were conducted: one with the site manager or community leader and one with a women's representative to ensure the perspectives of different groups were captured³. KI responses were aggregated to give one response per question per site.

This factsheet presents a summary of Danwadaag Site profile along with the needs and priorities of IDPs residing in the site. As the data is captured through KIs, findings should be considered indicative only.

Date assessed: Jan - 2018

Location map



Assessed IDP sites in Galdogob

Coordinates: Lat. 6.771, Long. 47.4247



1.United Nations High Commissioner for Refugees (UNHCR): Protection & Return Monitoring Network (PRMN), September 2017

2.For each target location, the area was divided into 1km² grids. Enumerator teams then visited each grid to verify whether an IDP site was present. By visiting all grids, teams were able to determine the total number of sites in each location.

3.Where KI responses were significantly divergent, these were verified with the respective KIs with a higher reliability accorded to the response provided by the site manager or community leader.





Site Information

Settlement type	Spontaneous site
Estimated number of individuals	3,000
Estimated number of households	500
Site capacity reached	Yes
Responsible management agency	Local authority
Date when most site residents arrived	Nov-12
Site owner	Private



Protection

Number of vulnerable households:

Female-headed households	26
Child-headed households	0
Elderly individuals ⁴	0
Unaccompanied children	0
Individuals with a physical disability	15

Presence of shared community space	Yes
Presence of separate space for women/girls	No
Presence of child friendly space	No
Public lighting in the site	Yes
Type of landownership	Formal
Risk of eviction in next three months	yes



WASH

Access to potable water	Yes
Number of latrines in the site:	
Latrines (mixed)	20
Latrines (male)	0
Latrines (female)	0
Access to handwashing facilities	Yes



Shelter and Non-Food Items (NFI)

Most common shelter types in the site⁵:

1. Buul
2. Tent
3. N/A

Electricity available in the site	No
Access to a NFI market	Yes
Average walking time to the nearest NFI market	10 minutes
Perceived safe access to NFI market	Yes



Displacement

Estimated number of households per displacement group:

IDPs	500
Host community/ non-displaced	0
IDP households arrived in the past 3 months	0

Most common areas of origin:

First area of origin	Hiraan
Second area of origin	Bakool
Third area of origin	N/A



Food Security

Primary source of food	Food assistance
Food distributions	Monthly
Access to a food market	Yes



Health and Nutrition

Most common health issue(s) reported in the site:

1. Malaria
2. N/A
3. N/A

Access to healthcare services	Yes
Average walking time to the nearest health service	20 minutes
Women give birth in the site	Yes
Access to nutrition services	Yes
Average walking time to the nearest nutrition service	10 minutes

Access to nutrition services: Yes



Education

Education services available	Yes
Average walking time to the nearest school	10 minutes

Education facilities available to residents in the site⁵:

1. Primary
2. Quranic
3. N/A



Communication

Three most trusted sources of information⁵:

1. Friends, neighbours and family
2. Religious leader
3. Radio

Most commonly spoken language	Somali Standard
-------------------------------	-----------------

4.More than 60 years old.

5.Key informants could select multiple responses.

Introduction

While an estimated 2.1 million people live in displacement sites in Somalia¹, existing information on exact locations and site level vulnerabilities is sparse, and existing assessments have been ad-hoc and unharmonised, resulting in low comparability and verification.

The Detailed Site Assessment (DSA) was triggered in coordination with the Camp Coordination and Camp Management (CCCM) Cluster in order to provide the humanitarian community with up-to-date information on location of internally displaced persons (IDP) sites, the conditions and capacity of the sites and the humanitarian needs of the residents.

Target locations for assessment were selected based on needs identified by the CCCM Cluster

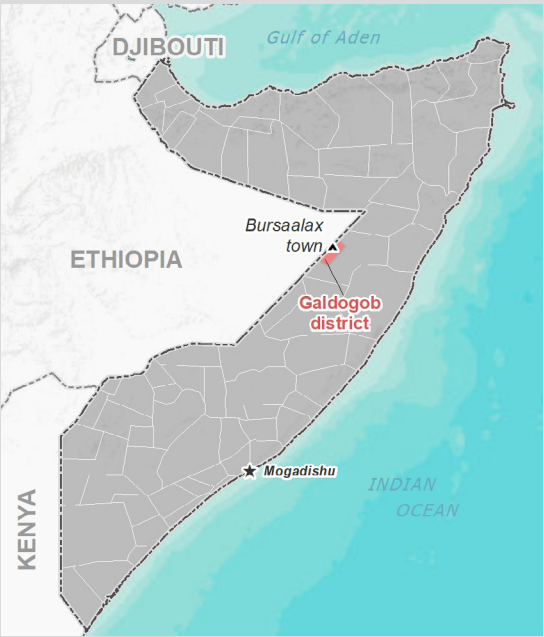
and accessibility for data collection.

A grid pattern approach² was applied during data collection to ensure that all IDP sites in the target area were identified. In each site, two key informant (KI) interviews were conducted: one with the site manager or community leader and one with a women's representative to ensure the perspectives of different groups were captured³. KI responses were aggregated to give one response per question per site.

This factsheet presents a summary of Waayo arag 2 Site profile along with the needs and priorities of IDPs residing in the site. As the data is captured through KIs, findings should be considered indicative only.

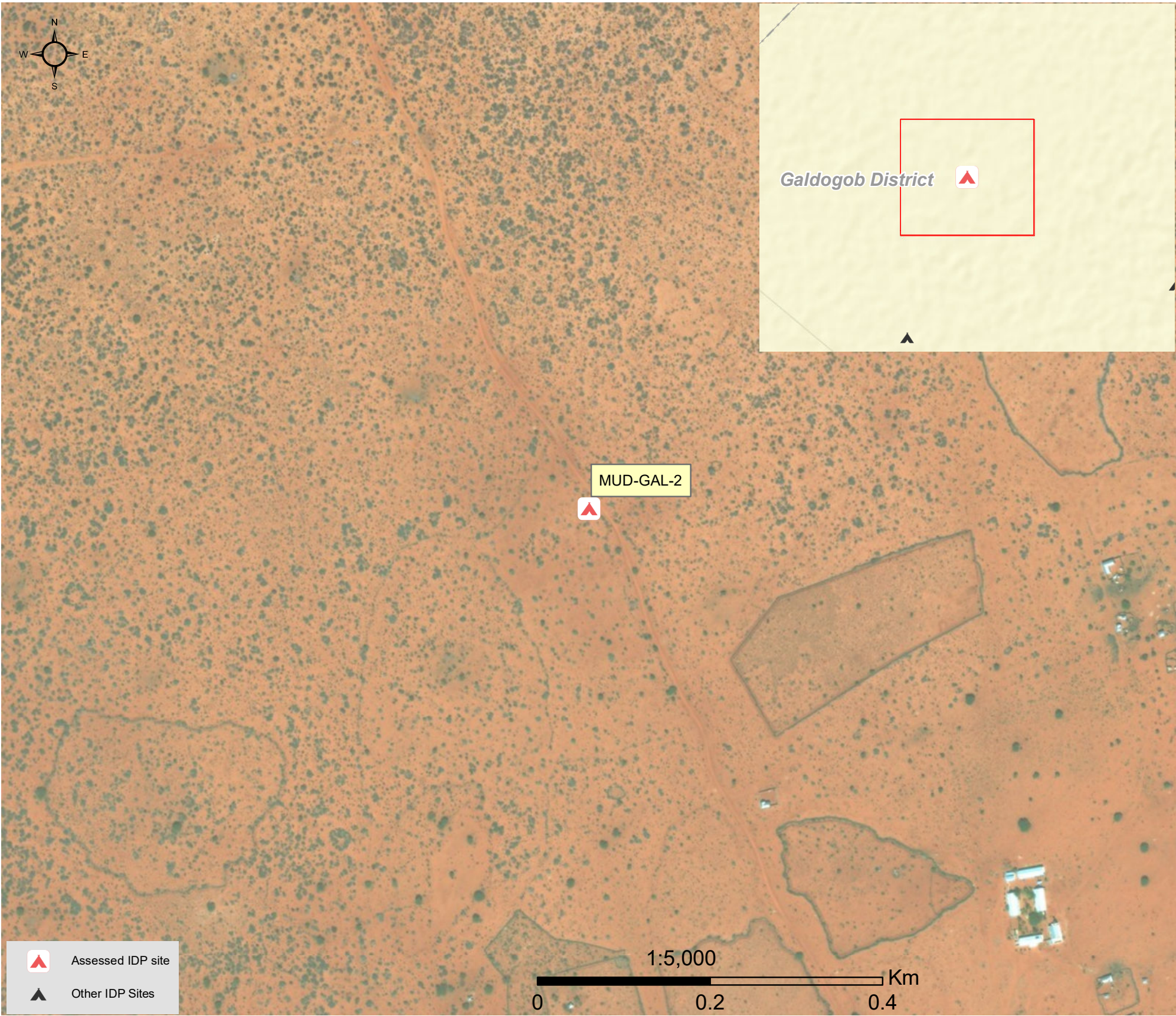
Date assessed: Jan - 2018

Location map



Assessed IDP sites in Galdogob

Coordinates: Lat. 7.19769, Long. 47.23509



1.United Nations High Commissioner for Refugees (UNHCR): Protection & Return Monitoring Network (PRMN), September 2017

2.For each target location, the area was divided into 1km² grids. Enumerator teams then visited each grid to verify whether an IDP site was present. By visiting all grids, teams were able to determine the total number of sites in each location.

3.Where KI responses were significantly divergent, these were verified with the respective KIs with a higher reliability accorded to the response provided by the site manager or community leader.



Site Information

Settlement type	Spontaneous site
Estimated number of individuals	2,820
Estimated number of households	470
Site capacity reached	Yes
Responsible management agency	Community leader
Date when most site residents arrived	Aug-17
Site owner	Local authority



Protection

Number of vulnerable households:

Female-headed households	70
Child-headed households	0
Elderly individuals ⁴	0
Unaccompanied children	7
Individuals with a physical disability	5

Presence of shared community space	No
Presence of separate space for women/girls	No
Presence of child friendly space	No
Public lighting in the site	No
Type of landownership	Formal
Risk of eviction in next three months	no



WASH

Access to potable water	Yes
Number of latrines in the site:	
Latrines (mixed)	0
Latrines (male)	0
Latrines (female)	0
Access to handwashing facilities	N/A



Shelter and Non-Food Items (NFIs)

Most common shelter types in the site⁵:

1. Buul
2. N/A
3. N/A

Electricity available in the site	No
Access to a NFI market	No
Average walking time to the nearest NFI market	N/A
Perceived safe access to NFI market	N/A



Displacement

Estimated number of households per displacement group:

IDPs	440
Host community/ non-displaced	30
IDP households arrived in the past 3 months	170

Most common areas of origin:

First area of origin	Mudug
Second area of origin	Lower Shabelle
Third area of origin	Bakool



Food Security

Primary source of food	Market purchase
Food distributions	Less than montly
Access to a food market	No



Health and Nutrition

Most common health issue(s) reported in the site:

1. Malaria
2. Diphteria
3. N/A

Access to healthcare services	No
Average walking time to the nearest health service	N/A
Women give birth in the site	Yes
Access to nutrition services	No
Average walking time to the nearest nutrition service	N/A

Access to nutrition services: No



Education

Education services available	Yes
Average walking time to the nearest school	5 minutes

Education facilities available to residents in the site⁵:

1. Quranic
2. N/A
3. N/A



Communication

Three most trusted sources of information⁵:

1. Friends, neighbours and family
2. Religious leader
3. Radio

Most commonly spoken language	Somali Standard
-------------------------------	-----------------

4.More than 60 years old.

5.Key informants could select multiple responses.

Introduction

While an estimated 2.1 million people live in displacement sites in Somalia¹, existing information on exact locations and site level vulnerabilities is sparse, and existing assessments have been ad-hoc and unharmonised, resulting in low comparability and verification.

The Detailed Site Assessment (DSA) was triggered in coordination with the Camp Coordination and Camp Management (CCCM) Cluster in order to provide the humanitarian community with up-to-date information on location of internally displaced persons (IDP) sites, the conditions and capacity of the sites and the humanitarian needs of the residents.

Target locations for assessment were selected based on needs identified by the CCCM Cluster

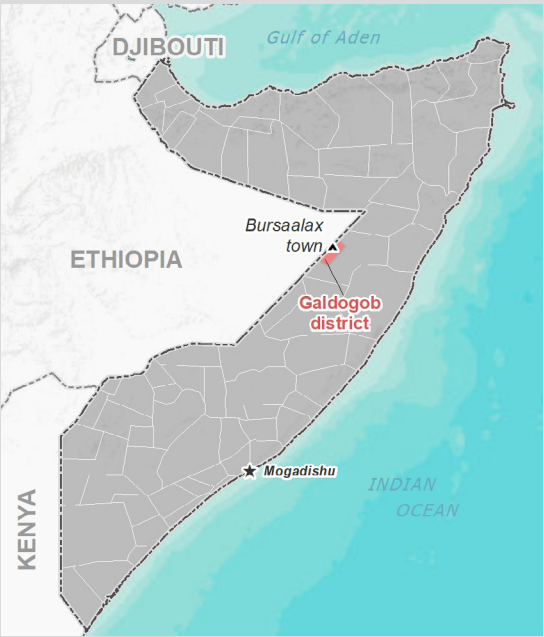
and accessibility for data collection.

A grid pattern approach² was applied during data collection to ensure that all IDP sites in the target area were identified. In each site, two key informant (KI) interviews were conducted: one with the site manager or community leader and one with a women's representative to ensure the perspectives of different groups were captured³. KI responses were aggregated to give one response per question per site.

This factsheet presents a summary of Salaama Site profile along with the needs and priorities of IDPs residing in the site. As the data is captured through KIs, findings should be considered indicative only.

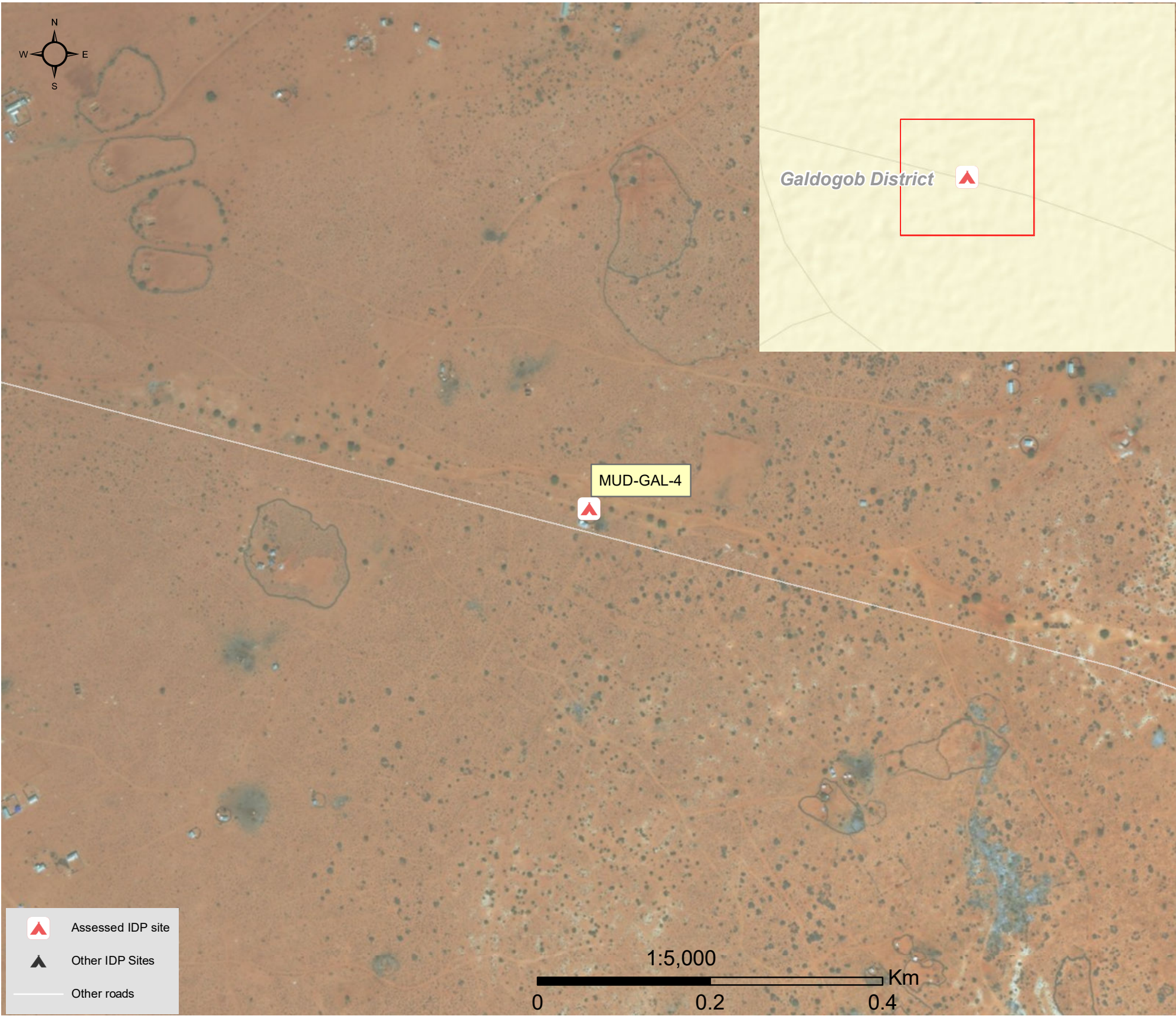
Date assessed: Jan - 2018

Location map



Assessed IDP sites in Galdogob

Coordinates: Lat. 7.17118, Long. 47.25747



1.United Nations High Commissioner for Refugees (UNHCR): Protection & Return Monitoring Network (PRMN), September 2017

2.For each target location, the area was divided into 1km² grids. Enumerator teams then visited each grid to verify whether an IDP site was present. By visiting all grids, teams were able to determine the total number of sites in each location.

3.Where KI responses were significantly divergent, these were verified with the respective KIs with a higher reliability accorded to the response provided by the site manager or community leader.



Site Information

Settlement type	Spontaneous site
Estimated number of individuals	2,520
Estimated number of households	420
Site capacity reached	Yes
Responsible management agency	Local authority
Date when most site residents arrived	Mar-17
Site owner	Local authority



Protection

Number of vulnerable households:	
Female-headed households	40
Child-headed households	7
Elderly individuals ⁴	0
Unaccompanied children	20
Individuals with a physical disability	10
Presence of shared community space	No
Presence of separate space for women/girls	Yes
Presence of child friendly space	No
Public lighting in the site	No
Type of landownership	Formal
Risk of eviction in next three months	no



WASH

Access to potable water	Yes
Number of latrines in the site:	
Latrines (mixed)	0
Latrines (male)	3
Latrines (female)	0
Access to handwashing facilities	No



Shelter and Non-Food Items (NFI)

Most common shelter types in the site⁵:	
1. Buul	
2. N/A	
3. N/A	
Electricity available in the site	No
Access to a NFI market	Yes
Average walking time to the nearest NFI market	30 minutes
Perceived safe access to NFI market	No



Displacement

Estimated number of households per displacement group:	
IDPs	412
Host community/ non-displaced	8
IDP households arrived in the past 3 months	80
Most common areas of origin:	
First area of origin	Mudug
Second area of origin	N/A
Third area of origin	N/A



Food Security

Primary source of food	Borrow food/money
Food distributions	None
Access to a food market	No



Health and Nutrition

Most common health issue(s) reported in the site:	
1. Malaria	
2. Diphteria	
3. N/A	
Access to healthcare services	No
Average walking time to the nearest health service	N/A
Women give birth in the site	Yes
Access to nutrition services	No
Average walking time to the nearest nutrition service	N/A
Access to nutrition services:	No



Education

Education services available	No
Average walking time to the nearest school	N/A
Education facilities available to residents in the site⁵:	
1. N/A	
2. N/A	
3. N/A	



Communication

Three most trusted sources of information⁵:	
1. Friends, neighbours and family	
2. Religious leader	
3. N/A	
Most commonly spoken language	Somali Standard

4.More than 60 years old.
5.Key informants could select multiple responses.



Introduction

While an estimated 2.1 million people live in displacement sites in Somalia¹, existing information on exact locations and site level vulnerabilities is sparse, and existing assessments have been ad-hoc and unharmonised, resulting in low comparability and verification.

The Detailed Site Assessment (DSA) was triggered in coordination with the Camp Coordination and Camp Management (CCCM) Cluster in order to provide the humanitarian community with up-to-date information on location of internally displaced persons (IDP) sites, the conditions and capacity of the sites and the humanitarian needs of the residents.

Target locations for assessment were selected based on needs identified by the CCCM Cluster

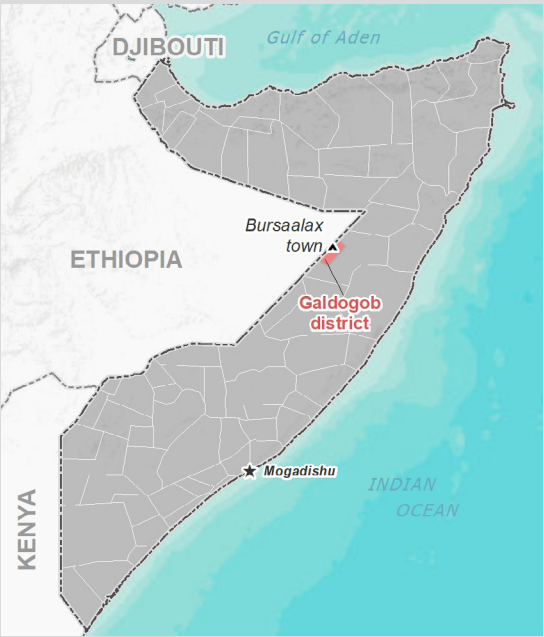
and accessibility for data collection.

A grid pattern approach² was applied during data collection to ensure that all IDP sites in the target area were identified. In each site, two key informant (KI) interviews were conducted: one with the site manager or community leader and one with a women's representative to ensure the perspectives of different groups were captured³. KI responses were aggregated to give one response per question per site.

This factsheet presents a summary of Hoodo Site profile along with the needs and priorities of IDPs residing in the site. As the data is captured through KIs, findings should be considered indicative only.

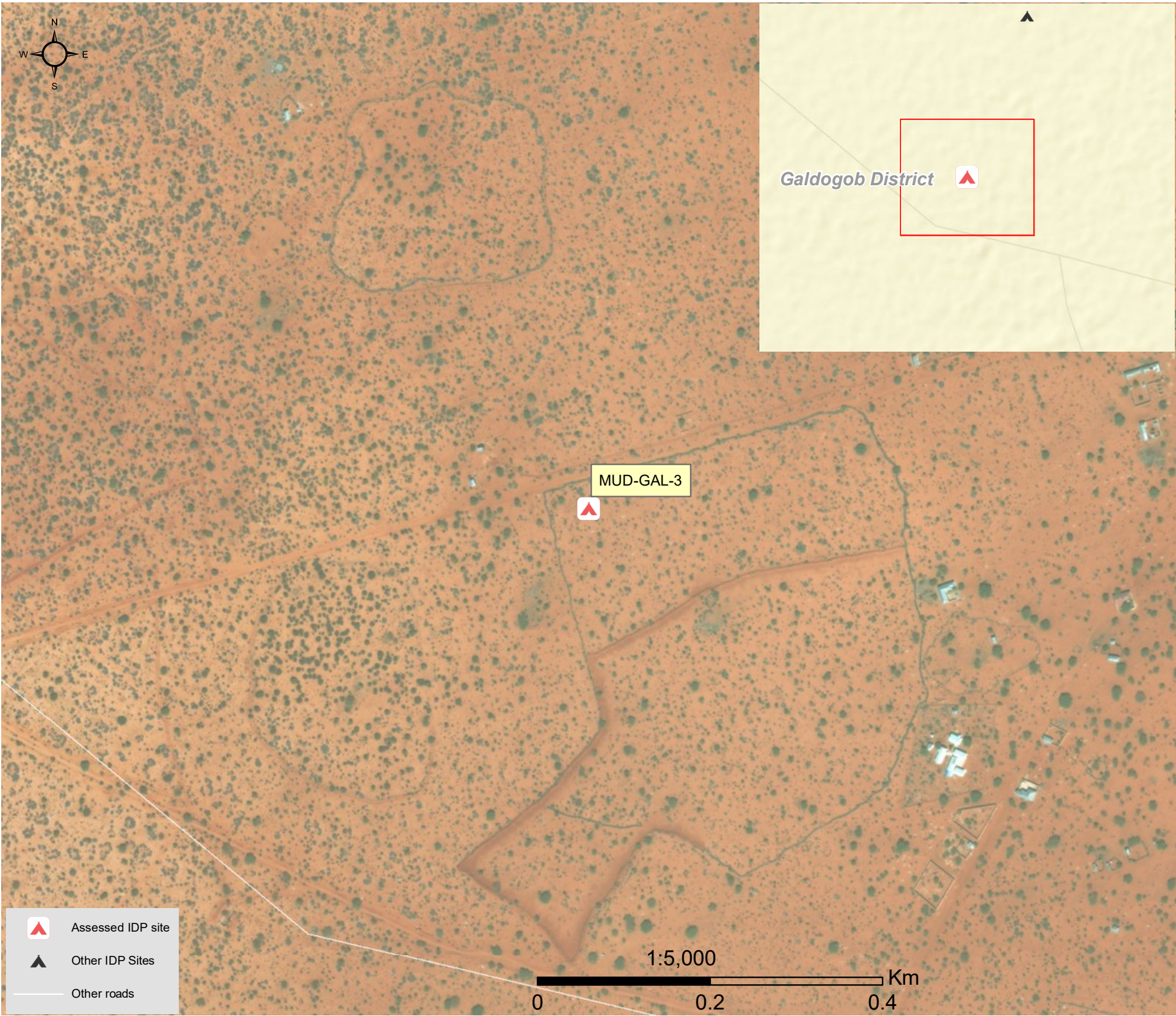
Date assessed: Jan - 2018

Location map



Assessed IDP sites in Galdogob

Coordinates: Lat. 7.18301, Long. 47.22958



1.United Nations High Commissioner for Refugees (UNHCR): Protection & Return Monitoring Network (PRMN), September 2017

2.For each target location, the area was divided into 1km² grids. Enumerator teams then visited each grid to verify whether an IDP site was present. By visiting all grids, teams were able to determine the total number of sites in each location.

3.Where KI responses were significantly divergent, these were verified with the respective KIs with a higher reliability accorded to the response provided by the site manager or community leader.



Site Information

Settlement type	Planned site
Estimated number of individuals	4,920
Estimated number of households	820
Site capacity reached	Yes
Responsible management agency	Residents
Date when most site residents arrived	Mar-17
Site owner	Private



Protection

Number of vulnerable households:	
Female-headed households	308
Child-headed households	70
Elderly individuals ⁴	0
Unaccompanied children	0
Individuals with a physical disability	5
Presence of shared community space	No
Presence of separate space for women/girls	Yes
Presence of child friendly space	No
Public lighting in the site	No
Type of landownership	Formal
Risk of eviction in next three months	no



WASH

Access to potable water	Yes
Number of latrines in the site:	
Latrines (mixed)	0
Latrines (male)	9
Latrines (female)	9
Access to handwashing facilities	No



Shelter and Non-Food Items (NFI)

Most common shelter types in the site⁵:	
1. Buul	
2. N/A	
3. N/A	
Electricity available in the site	No
Access to a NFI market	Yes
Average walking time to the nearest NFI market	30 minutes
Perceived safe access to NFI market	Yes



Displacement

Estimated number of households per displacement group:	
IDPs	735
Host community/ non-displaced	85
IDP households arrived in the past 3 months	320
Most common areas of origin:	
First area of origin	Mudug
Second area of origin	Bay
Third area of origin	Banadir



Food Security

Primary source of food	Market purchase
Food distributions	Monthly
Access to a food market	No



Health and Nutrition

Most common health issue(s) reported in the site:	
1. Malaria	
2. Diphteria	
3. N/A	
Access to healthcare services	No
Average walking time to the nearest health service	N/A
Women give birth in the site	Yes
Access to nutrition services	No
Average walking time to the nearest nutrition service	N/A
Access to nutrition services:	No



Education

Education services available	No
Average walking time to the nearest school	N/A
Education facilities available to residents in the site⁵:	
1. N/A	
2. N/A	
3. N/A	



Communication

Three most trusted sources of information⁵:	
1. Friends, neighbours and family	
2. Religious leader	
3. N/A	
Most commonly spoken language	Somali Standard

4. More than 60 years old.
5. Key informants could select multiple responses.



Introduction

While an estimated 2.1 million people live in displacement sites in Somalia¹, existing information on exact locations and site level vulnerabilities is sparse, and existing assessments have been ad-hoc and unharmonised, resulting in low comparability and verification.

The Detailed Site Assessment (DSA) was triggered in coordination with the Camp Coordination and Camp Management (CCCM) Cluster in order to provide the humanitarian community with up-to-date information on location of internally displaced persons (IDP) sites, the conditions and capacity of the sites and the humanitarian needs of the residents.

Target locations for assessment were selected based on needs identified by the CCCM Cluster

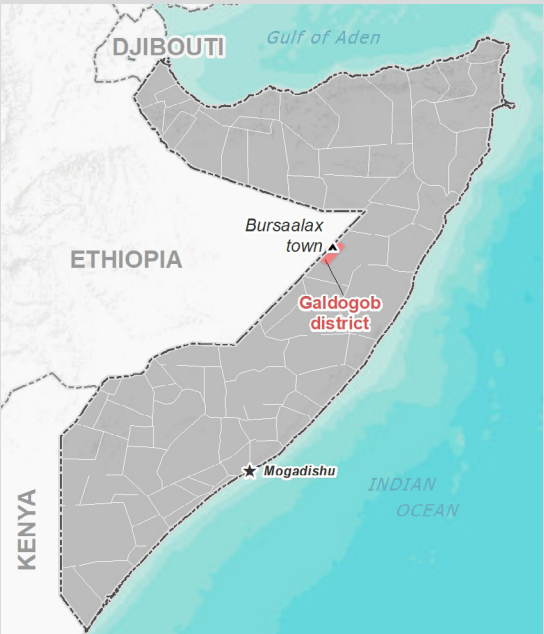
and accessibility for data collection.

A grid pattern approach² was applied during data collection to ensure that all IDP sites in the target area were identified. In each site, two key informant (KI) interviews were conducted: one with the site manager or community leader and one with a women's representative to ensure the perspectives of different groups were captured³. KI responses were aggregated to give one response per question per site.

This factsheet presents a summary of Horseed Site profile along with the needs and priorities of IDPs residing in the site. As the data is captured through KIs, findings should be considered indicative only.

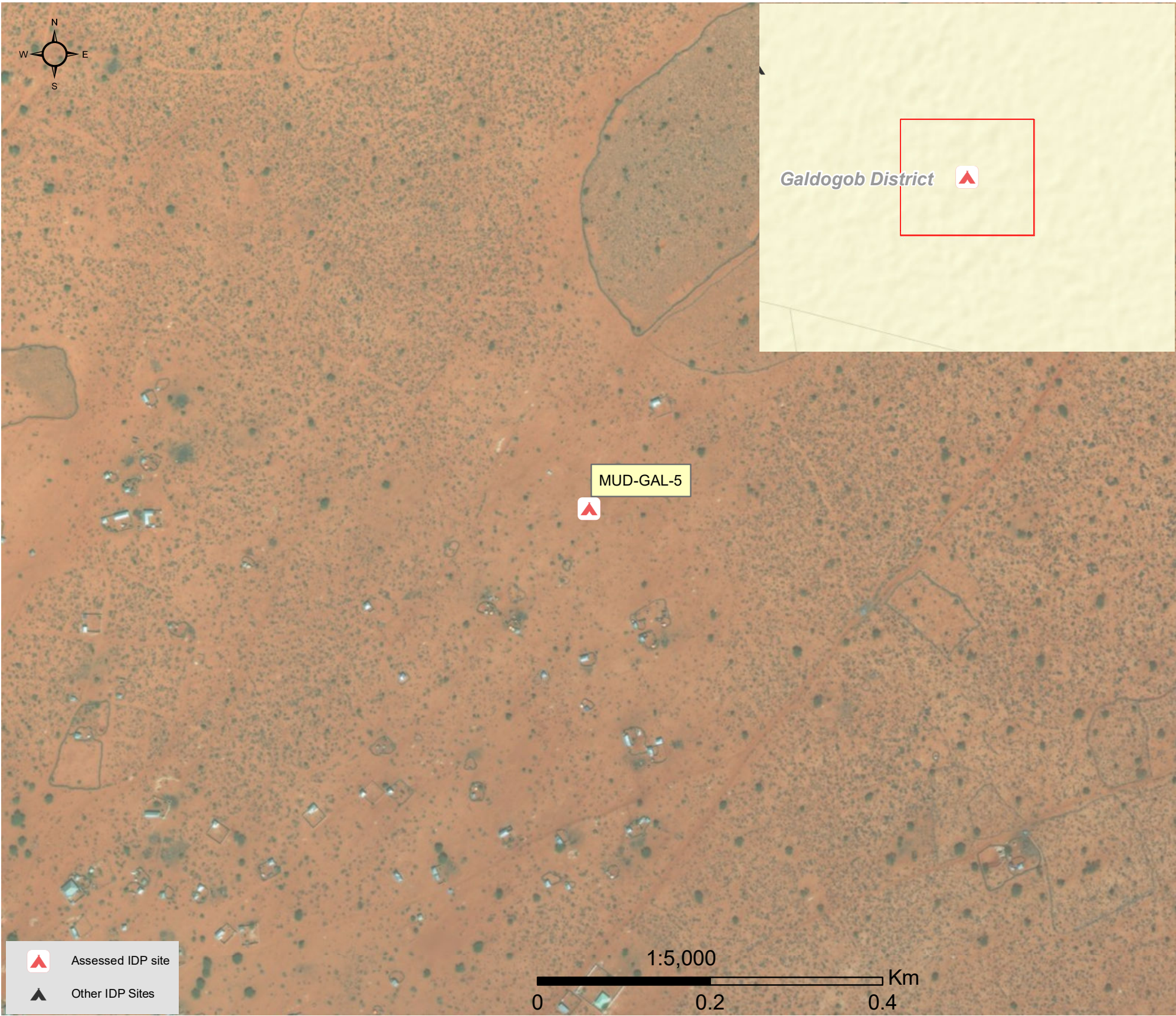
Date assessed: **Jan - 2018**

Location map



Assessed IDP sites in Galdogob

Coordinates: Lat. 7.18785, Long. 47.25427



1.United Nations High Commissioner for Refugees (UNHCR): Protection & Return Monitoring Network (PRMN), September 2017

2.For each target location, the area was divided into 1km² grids. Enumerator teams then visited each grid to verify whether an IDP site was present. By visiting all grids, teams were able to determine the total number of sites in each location.

3.Where KI responses were significantly divergent, these were verified with the respective KIs with a higher reliability accorded to the response provided by the site manager or community leader.



Site Information

Settlement type	Planned site
Estimated number of individuals	2,880
Estimated number of households	480
Site capacity reached	Yes
Responsible management agency	Residents
Date when most site residents arrived	Mar-17
Site owner	None



Protection

Number of vulnerable households:	
Female-headed households	180
Child-headed households	18
Elderly individuals ⁴	0
Unaccompanied children	15
Individuals with a physical disability	20
Presence of shared community space	No
Presence of separate space for women/girls	Yes
Presence of child friendly space	No
Public lighting in the site	No
Type of landownership	N/A
Risk of eviction in next three months	no



WASH

Access to potable water	Yes
Number of latrines in the site:	
Latrines (mixed)	0
Latrines (male)	0
Latrines (female)	0
Access to handwashing facilities	N/A



Shelter and Non-Food Items (NFI)

Most common shelter types in the site⁵:	
1. Buul	
2. N/A	
3. N/A	
Electricity available in the site	No
Access to a NFI market	Yes
Average walking time to the nearest NFI market	45 minutes
Perceived safe access to NFI market	Yes



Displacement

Estimated number of households per displacement group:	
IDPs	360
Host community/ non-displaced	120
IDP households arrived in the past 3 months	190
Most common areas of origin:	
First area of origin	Mudug
Second area of origin	Bakool
Third area of origin	Sool



Food Security

Primary source of food	Market purchase
Food distributions	Monthly
Access to a food market	No



Health and Nutrition

Most common health issue(s) reported in the site:	
1. Malaria	
2. Diphteria	
3. N/A	
Access to healthcare services	No
Average walking time to the nearest health service	N/A
Women give birth in the site	Yes
Access to nutrition services	No
Average walking time to the nearest nutrition service	N/A
Access to nutrition services:	No



Education

Education services available	No
Average walking time to the nearest school	N/A
Education facilities available to residents in the site⁵:	
1. N/A	
2. N/A	
3. N/A	



Communication

Three most trusted sources of information⁵:	
1. Friends, neighbours and family	
2. N/A	
3. N/A	
Most commonly spoken language	Somali Standard

4.More than 60 years old.
5.Key informants could select multiple responses.

