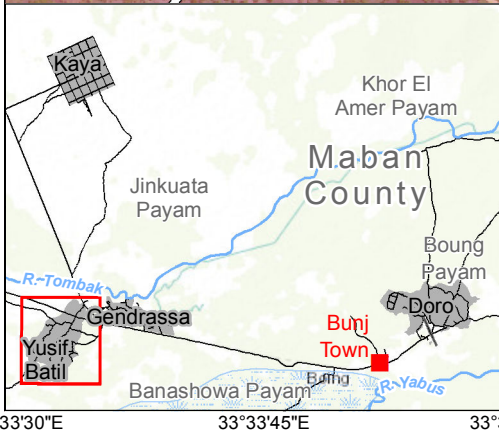
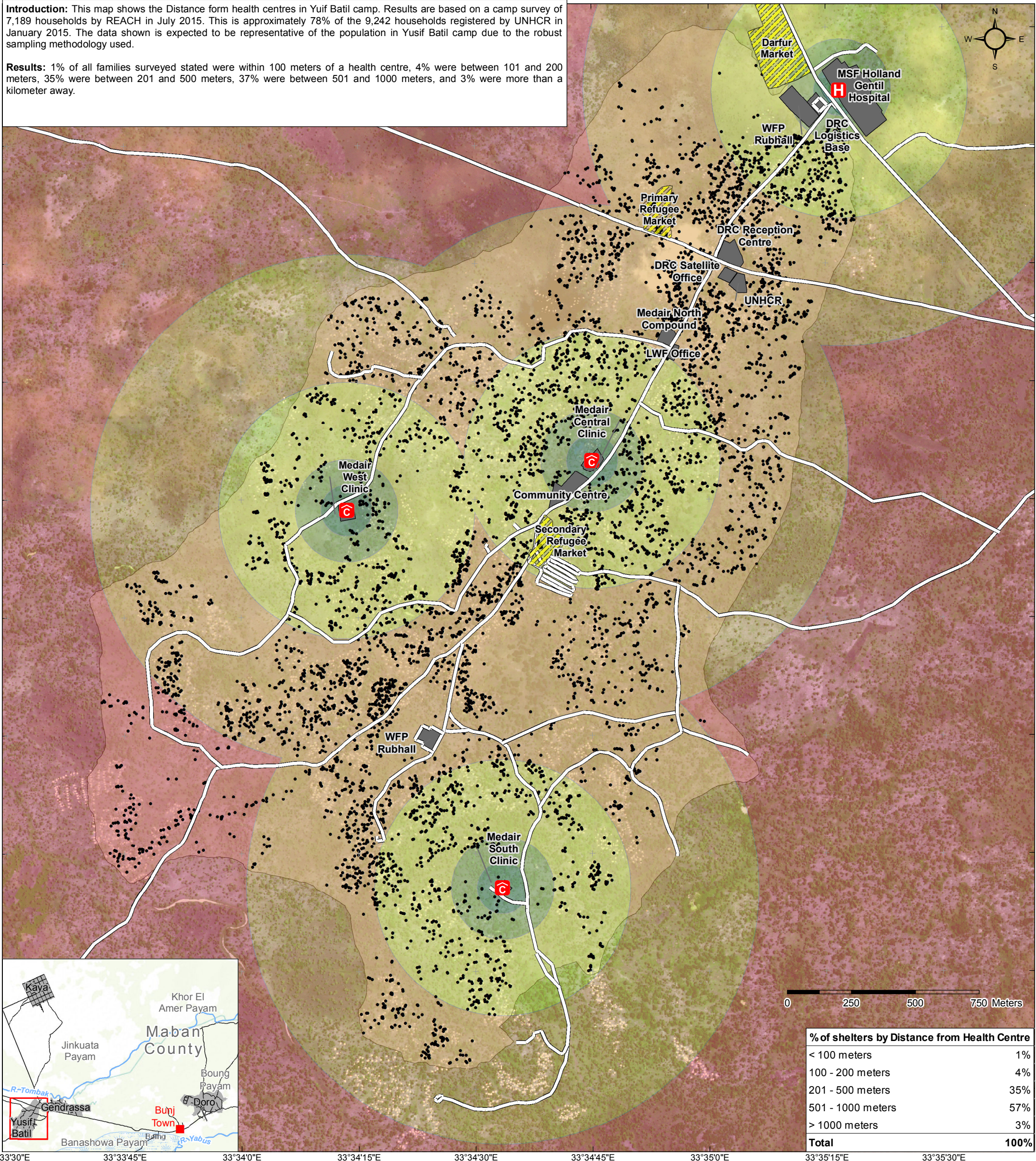


Introduction: This map shows the Distance from health centres in Yusif Batil camp. Results are based on a camp survey of 7,189 households by REACH in July 2015. This is approximately 78% of the 9,242 households registered by UNHCR in January 2015. The data shown is expected to be representative of the population in Yusif Batil camp due to the robust sampling methodology used.

Results: 1% of all families surveyed stated were within 100 meters of a health centre, 4% were between 101 and 200 meters, 35% were between 201 and 500 meters, 37% were between 501 and 1000 meters, and 3% were more than a kilometer away.



- Distance from Health Centre**
- < 100 meters
 - 101 - 200 meters
 - 201 - 500 meters
 - 501 - 1000 meters
 - > 1000 meters
 - Household Locations
- Health Centres**
- Hospital
 - Clinic
- Camp Features**
- Camp Boundary
 - Compound Boundary
 - Market
 - Roads

Data sources: roads: PAE (2015); Water Points: Medair (2015); shelters: UNOSAT (2013); satellite imagery: WV-2 satellite (2013); administrative units, hydrology: OCHA COD; Basemap: Esri; All other features: REACH (2015).

Coordinate System: GCS WGS 1984
Contact: reach.mapping@impact-initiatives.org

Note: Data, designations and boundaries contained on this map are not warranted to be error-free and do not imply acceptance by the REACH partners, associates, donors or any other stakeholder mentioned on this map.

File: REACH_SSD_Map_YusifBatil_CAMP_HealthDistance