

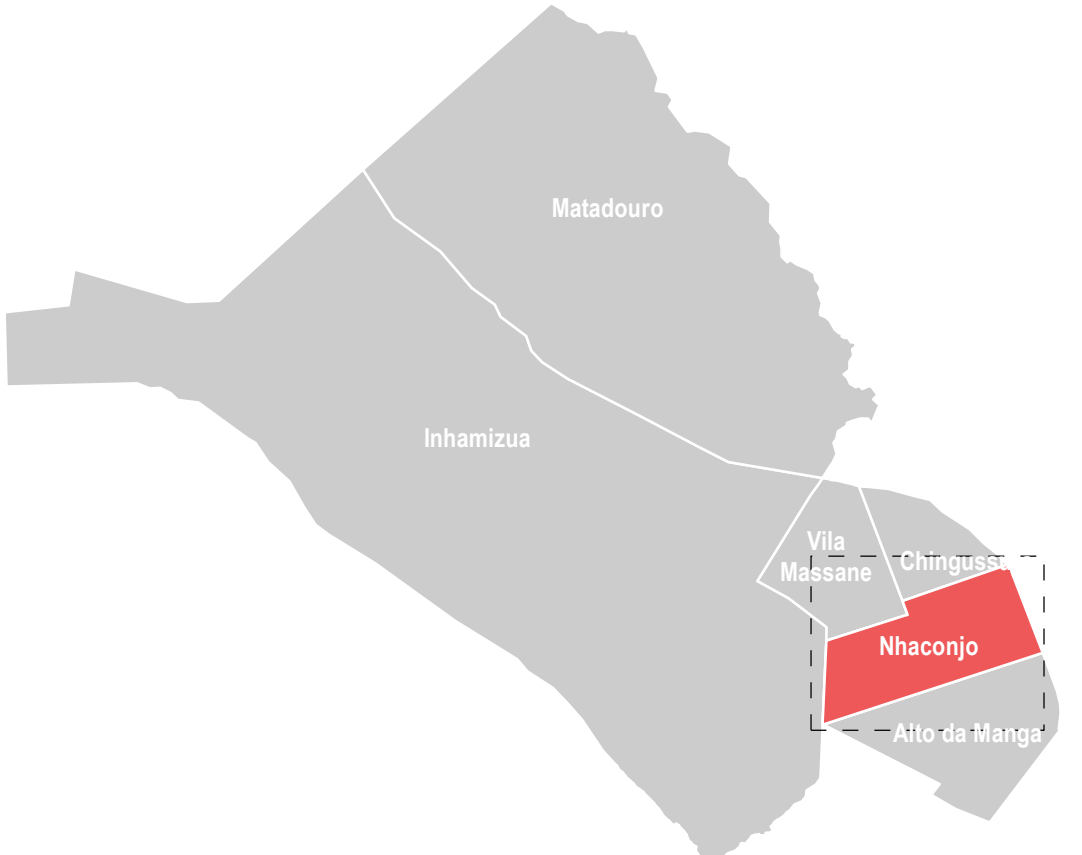
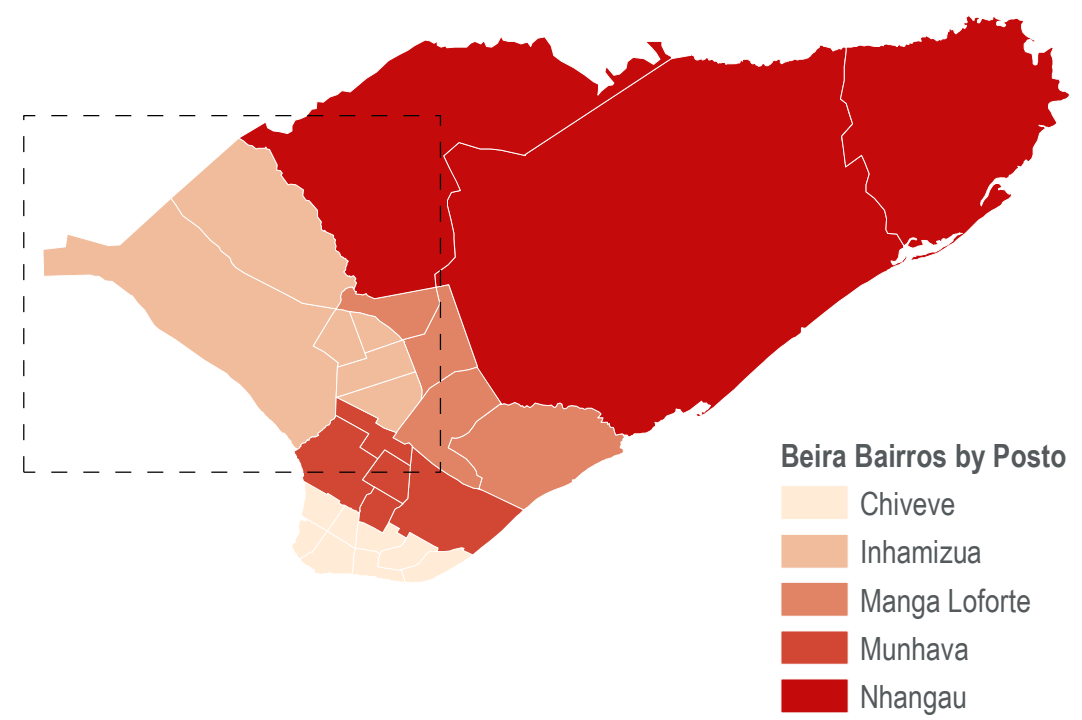
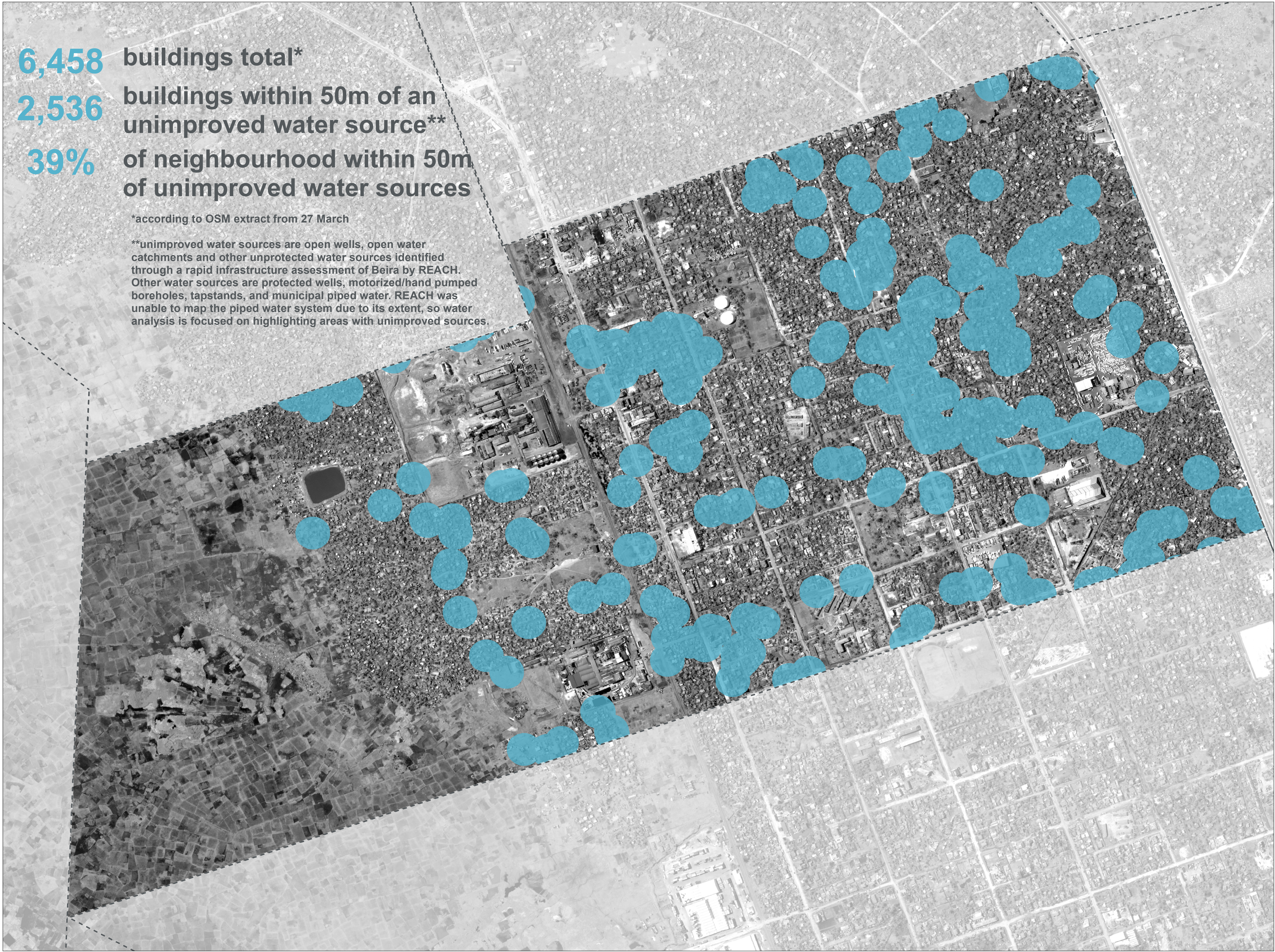
6,458 buildings total*

2,536 buildings within 50m of an unimproved water source**

39% of neighbourhood within 50m of unimproved water sources

*according to OSM extract from 27 March

**unimproved water sources are open wells, open water catchments and other unprotected water sources identified through a rapid infrastructure assessment of Beira by REACH. Other water sources are protected wells, motorized/hand pumped boreholes, tapstands, and municipal piped water. REACH was unable to map the piped water system due to its extent, so water analysis is focused on highlighting areas with unimproved sources.

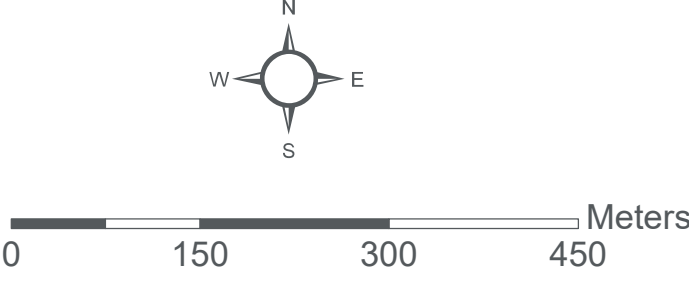


Data sources:
Water Infrastructure - REACH
Beira Bairros - INGC
Administrative Boundaries (0-3) - OCHA
Satellite Imagery: WorldView-2 from 26 March 2019
Copyright: ©DigitalGlobe 2019
Source: US Dept of State Humanitarian Information Unit, NextView License

Legend

● Areas within 50m of unimproved water sources

--- Bairros



Coordinate System: GCS WGS 1984
File: MOZ_Map_Cyclonelda_WaterAnalysis_Nhaconjo_25APR2019
Contact: reach.mapping@impact-initiatives.org

Note: Data, designations and boundaries contained on this map are not warranted to be error-free and do not imply acceptance by the REACH partners, associated, donors mentioned on this map.



Funded by
European Union
Civil Protection and
Humanitarian Aid