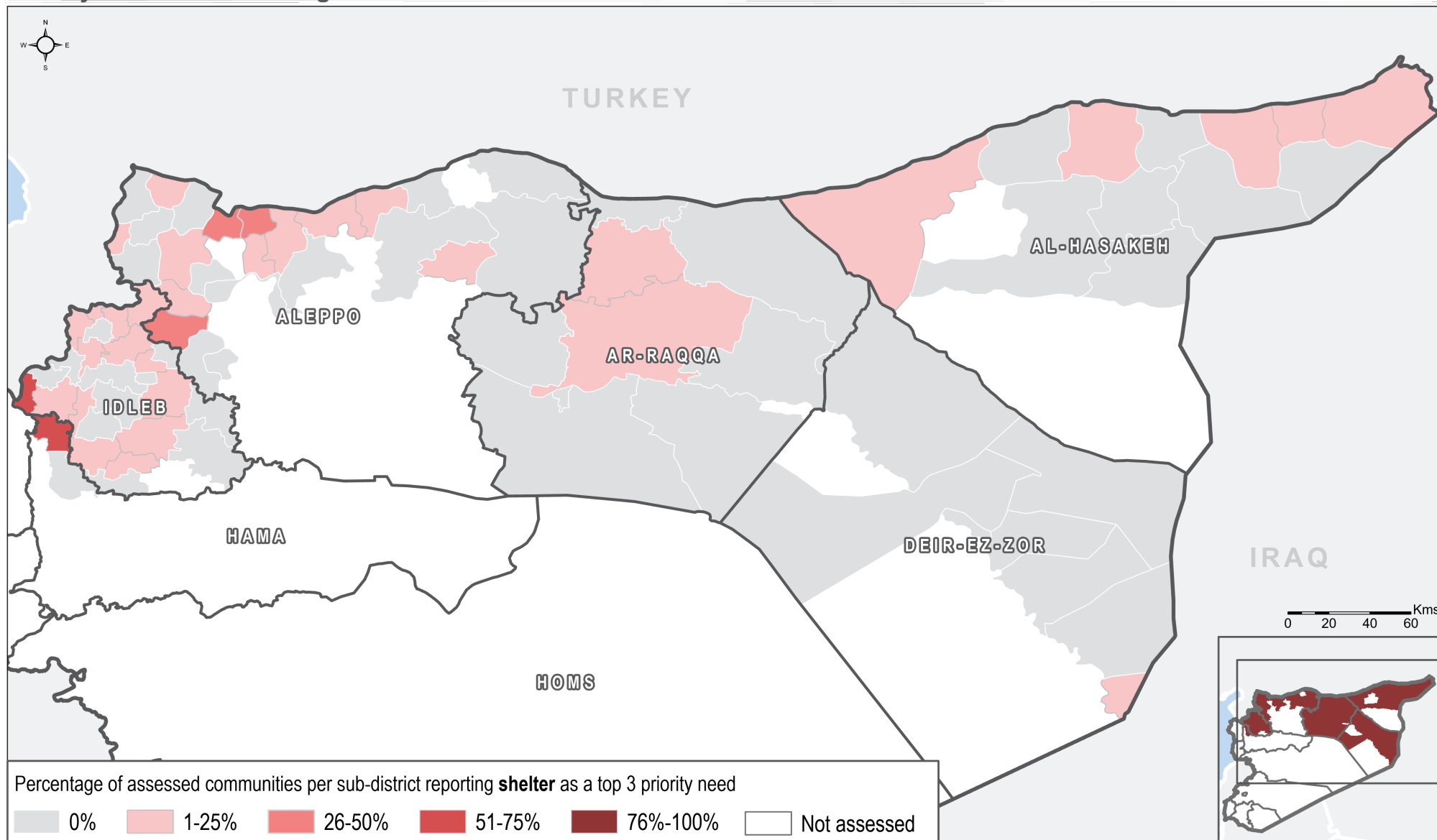


Priority Need: Shelter - August 2019

Humanitarian Purposes Only
Production date : 07/10/2019



Data source: REACH - Humanitarian Situation Overview of Syria (HSOS)
Priority need questions were 'select up to three' so the percentages across all maps add up to more than 100%.

Priority needs reported are the perceived top 3 priority needs as reported by KIs within assessed communities and are not necessarily representative of actual priorities.

Annexes detailing the priorities reported by each assessed community are available on request.

Humanitarian Situation Overview in Syria (HSOS) August 2019

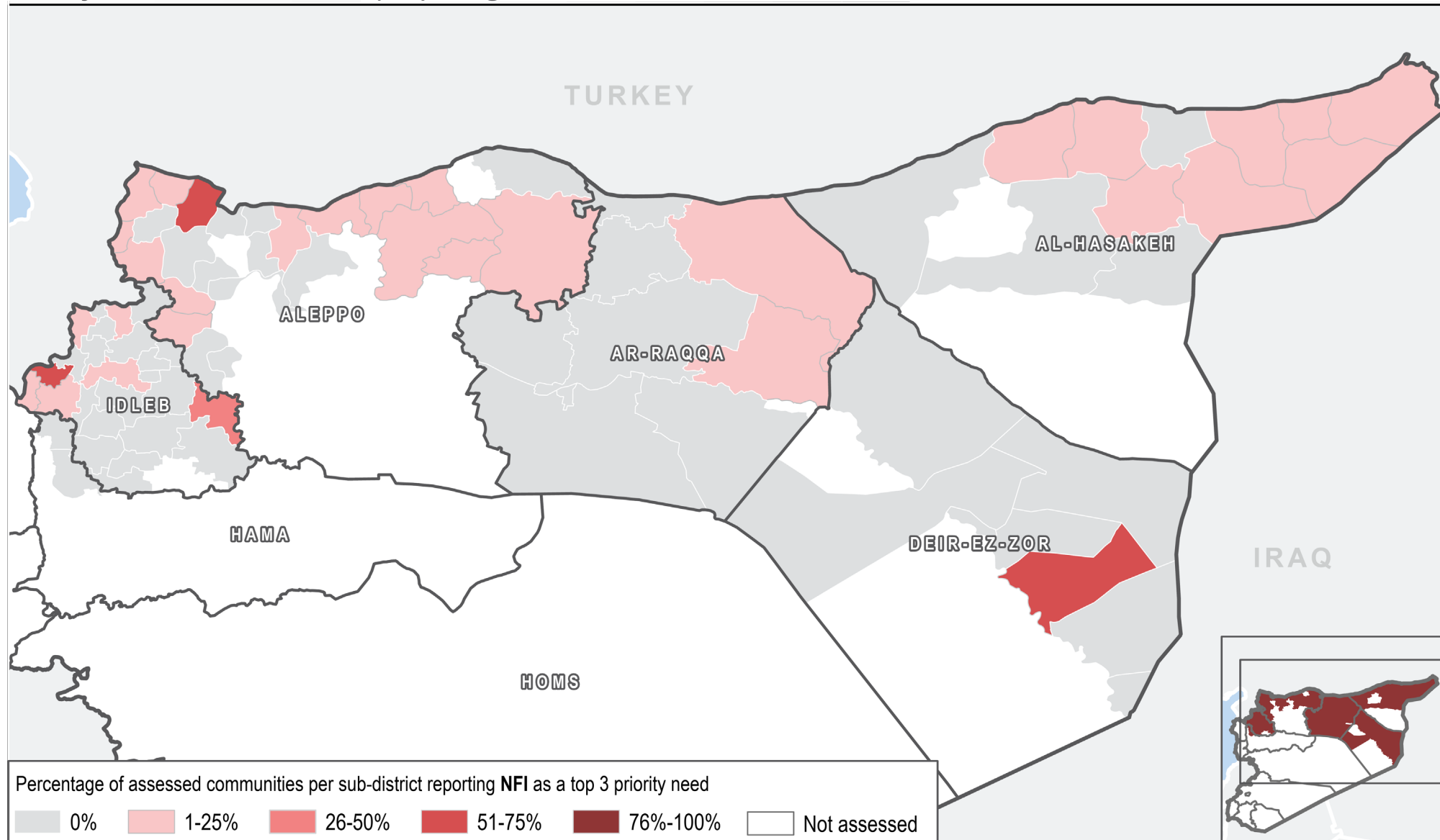
Number of assessed communities in sub-district reporting shelter as top 3 priority need

admin1Name	admin3Name	Shelter	admin1Name	admin3Name	Shelter	admin1Name	admin3Name	Shelter	admin1Name	admin3Name	Shelter
Al-Hasakeh	Al-Hasakeh	0/1	Aleppo	Daret Azza	4/25	Ar-Raqqa	Mansura	0/9	Idleb	Ehsem	0/19
Al-Hasakeh	Al-Malikeyyeh	1/49	Aleppo	Ghandorah	2/36	Ar-Raqqa	Sabka	0/2	Idleb	Harim	1/5
Al-Hasakeh	Amuda	1/18	Aleppo	Hadher	0/1	Ar-Raqqa	Suluk	0/37	Idleb	Heish	1/13
Al-Hasakeh	Be'r Al-Hulo Al-Wardeyyeh	0/8	Aleppo	Haritan	0/8	Ar-Raqqa	Tell Abiad	0/26	Idleb	Idleb	0/15
Al-Hasakeh	Darbasiyah	0/16	Aleppo	Jandairis	0/44	Deir-ez-Zor	Basira	0/14	Idleb	Janudiyeh	0/12
Al-Hasakeh	Hole	0/11	Aleppo	Jarablus	0/35	Deir-ez-Zor	Deir-ez-Zor	0/6	Idleb	Jisir-Ash-Shugur	2/39
Al-Hasakeh	Jawadiyah	1/28	Aleppo	Ma'btali	0/25	Deir-ez-Zor	Hajin	0/7	Idleb	Kafr Nobol	4/26
Al-Hasakeh	Qahtaniyyeh	1/29	Aleppo	Mare'	1/6	Deir-ez-Zor	Khasham	0/4	Idleb	Kafr Takharim	0/10
Al-Hasakeh	Quamishli	0/16	Aleppo	Menbij	0/60	Deir-ez-Zor	Kisreh	0/39	Idleb	Khan Shaykun	0/2
Al-Hasakeh	Ras Al Ain	3/20	Aleppo	Nabul	0/1	Deir-ez-Zor	Sur	0/17	Idleb	Ma'arrat An Nu'man	2/30
Al-Hasakeh	Tal Hmis	0/23	Aleppo	Raju	0/50	Deir-ez-Zor	Susat	1/5	Idleb	Maaret Tamsrin	1/22
Al-Hasakeh	Ya'robiyah	0/17	Aleppo	Sarin	0/90	Deir-ez-Zor	Thiban	0/11	Idleb	Mhambal	3/22
Aleppo	A'zaz	5/16	Aleppo	Sharan	0/31	Hama	Madiq Castle	0/2	Idleb	Qourqeena	2/17
Aleppo	Abu Qalqal	1/19	Aleppo	Sheikh El-Hadid	1/13	Hama	Ziyara	2/3	Idleb	Salqin	6/26
Aleppo	Afrin	6/37	Aleppo	Suran	7/25	Idleb	Abul Thohur	0/7	Idleb	Sanjar	0/6
Aleppo	Aghtrin	1/40	Aleppo	Zarbah	0/13	Idleb	Ariha	0/34	Idleb	Saraqab	6/24
Aleppo	Ain al Arab	0/28	Ar-Raqqa	Al-Thawrah	0/2	Idleb	Armanaz	3/14	Idleb	Sarmin	0/1
Aleppo	Al Bab	0/22	Ar-Raqqa	Ar-Raqqa	1/79	Idleb	Badama	8/12	Idleb	Teftnaz	0/7
Aleppo	Ar-Ra'ee	7/30	Ar-Raqqa	Ein Issa	1/46	Idleb	Bennsh	1/4			
Aleppo	Atareb	11/30	Ar-Raqqa	Jurneyyeh	0/42	Idleb	Dana	1/20			
Aleppo	Bulbul	3/33	Ar-Raqqa	Karama	0/28	Idleb	Darkosh	0/9			

Data source: REACH - Humanitarian Situation Overview of Syria (HSOS)

Priority Need: Non Food Items (NFI) - August 2019

Humanitarian Use Only
Production date : 10/10/2019



Percentage of assessed communities per sub-district reporting NFI as a top 3 priority need

0%	1-25%	26-50%	51-75%	76%-100%	Not assessed
----	-------	--------	--------	----------	--------------

Data source: REACH - Humanitarian Situation Overview of Syria (HSOS)
Priority need questions were 'select up to three' so the percentages across all maps add up to more than 100%.

Priority needs reported are the perceived top 3 priority needs as reported by KIs within assessed communities and are not necessarily representative of actual priorities.

Annexes detailing the priorities reported by each assessed community are available on request.

Humanitarian Situation Overview in Syria (HSOS) August 2019

Number of assessed communities in sub-district reporting NFI as top 3 priority need

admin1Name	admin3Name	NFI	admin1Name	admin3Name	NFI	admin1Name	admin3Name	NFI	admin1Name	admin3Name	NFI
Al-Hasakeh	Al-Hasakeh	0/1	Aleppo	Daret Azza	3/25	Ar-Raqqa	Mansura	0/9	Idleb	Ehsem	0/19
Al-Hasakeh	Al-Malikeyyeh	1/49	Aleppo	Ghandorah	3/36	Ar-Raqqa	Sabka	0/2	Idleb	Harim	0/5
Al-Hasakeh	Amuda	2/18	Aleppo	Hadher	0/1	Ar-Raqqa	Suluk	1/37	Idleb	Heish	0/13
Al-Hasakeh	Be'r Al-Hulo Al-Wardeyyeh	1/8	Aleppo	Haritan	0/8	Ar-Raqqa	Tell Abiad	0/26	Idleb	Idleb	2/15
Al-Hasakeh	Darbasiyah	1/16	Aleppo	Jandairis	1/44	Deir-ez-Zor	Basira	0/14	Idleb	Janudiyeh	8/12
Al-Hasakeh	Hole	0/11	Aleppo	Jarablus	7/35	Deir-ez-Zor	Deir-ez-Zor	0/6	Idleb	Jisr-Ash-Shugur	7/39
Al-Hasakeh	Jawadiyah	3/28	Aleppo	Ma'btali	0/25	Deir-ez-Zor	Hajin	0/7	Idleb	Kafr Nobol	0/26
Al-Hasakeh	Qahtaniyyeh	5/29	Aleppo	Mare'	0/6	Deir-ez-Zor	Khasham	0/4	Idleb	Kafr Takharim	0/10
Al-Hasakeh	Quamishli	0/16	Aleppo	Menbij	2/60	Deir-ez-Zor	Kisreh	0/39	Idleb	Khan Shaykun	0/2
Al-Hasakeh	Ras Al Ain	0/20	Aleppo	Nabul	0/1	Deir-ez-Zor	Sur	0/17	Idleb	Ma'arrat An Nu'man	0/30
Al-Hasakeh	Tal Hmis	3/23	Aleppo	Raju	5/50	Deir-ez-Zor	Susat	0/5	Idleb	Maaret Tamsrin	0/22
Al-Hasakeh	Ya'robiyah	1/17	Aleppo	Sarin	5/90	Deir-ez-Zor	Thiban	8/11	Idleb	Mhambal	0/22
Aleppo	A'zaz	0/16	Aleppo	Sharan	16/31	Hama	Madiq Castle	0/2	Idleb	Qourqeena	3/17
Aleppo	Abu Qalqal	1/19	Aleppo	Sheikh El-Hadid	3/13	Hama	Ziyara	0/3	Idleb	Salqin	5/26
Aleppo	Afrin	0/37	Aleppo	Suran	0/25	Idleb	Abul Thohur	2/7	Idleb	Sanjar	0/6
Aleppo	Aghtrin	3/40	Aleppo	Zarbah	0/13	Idleb	Ariha	0/34	Idleb	Saraqab	0/24
Aleppo	Ain al Arab	0/28	Ar-Raqqa	Al-Thawrah	0/2	Idleb	Armanaz	0/14	Idleb	Sarmin	0/1
Aleppo	Al Bab	0/22	Ar-Raqqa	Ar-Raqqa	0/79	Idleb	Badama	1/12	Idleb	Teftnaz	0/7
Aleppo	Ar-Ra'ee	3/30	Ar-Raqqa	Ein Issa	0/46	Idleb	Bennsh	0/4			
Aleppo	Atareb	5/30	Ar-Raqqa	Jurneyyeh	0/42	Idleb	Dana	0/20			
Aleppo	Bulbul	6/33	Ar-Raqqa	Karama	1/28	Idleb	Darkosh	0/9			

Data source: REACH - Humanitarian Situation Overview of Syria (HSOS)

Humanitarian Situation Overview in Syria (HSOS) August 2019

SHELTER AND NFI IN NORTHEAST SYRIA (NES)

4,086 SYP Regional average monthly reported rent price in SYP across assessed communities.¹

6,394 SYP Northern Syria average monthly reported rent price in SYP across assessed communities.^{1,2}

Most commonly reported shelter type for PCP households:³



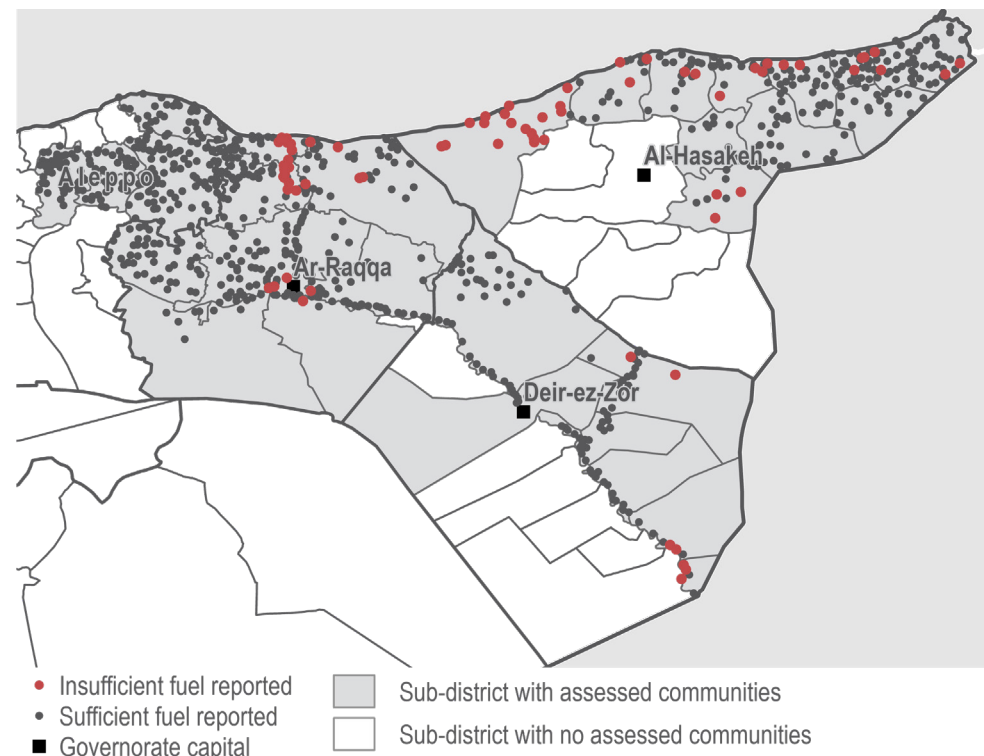
Most commonly reported shelter type for IDP households:³



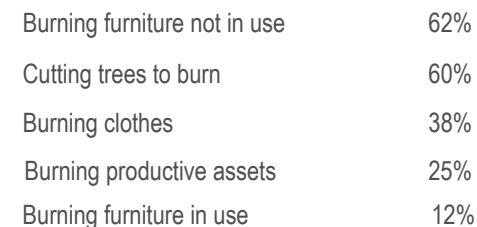
Reported fuel prices (in SYP):^{1,4}

Fuel type (1L):	Regional average price in August 2019:	One month change:	Six month change:
GoS petrol	410	+16%	+37%
GoS diesel	125	+138%	+127%
Manually refined petrol	162.5	-35%	-19%
Manually refined diesel	112.5	-21%	-13%
Cooking fuel	3,473.5	+10%	+10%

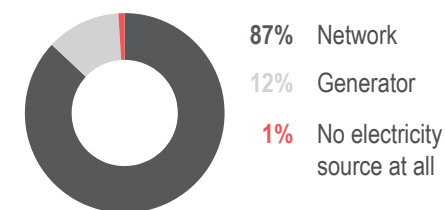
Communities that reported insufficient amounts of fuel to meet household needs:⁷



733 communities reported no lack of fuel. Most common strategies to cope with lack of fuel in the remaining **48** assessed communities:^{3,5,6}



Primary source of electricity reported:³



Humanitarian Situation Overview in Syria (HSOS) August 2019

SHELTER AND NFI IN NORTHWEST SYRIA (NWS)

6,057 SYP Regional average monthly reported rent price in SYP across assessed communities.¹

6,394 SYP Northern Syria average monthly reported rent price in SYP across assessed communities.^{1,2}

Most commonly reported shelter type for PCP households:³



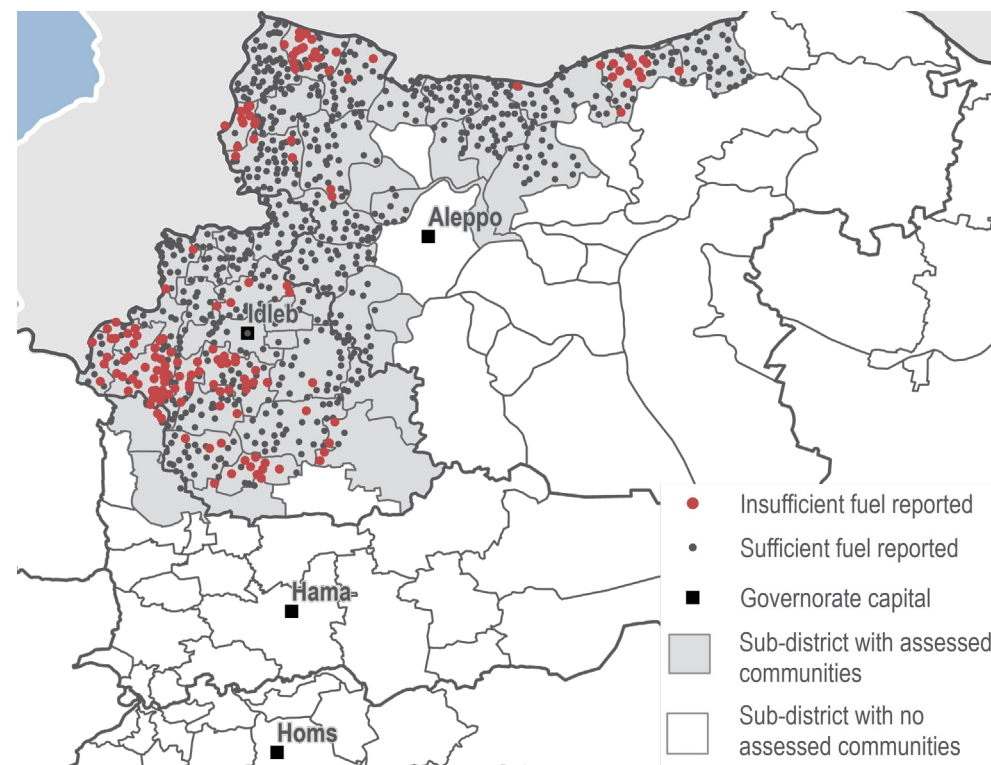
Most commonly reported shelter type for IDP households:³



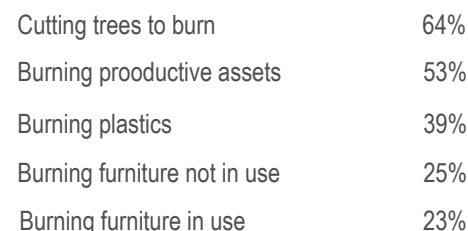
Reported fuel prices (in SYP):^{1,4}

Fuel type (1L):	Regional average price in April 2019:	One month change:	Six month change:
GoS petrol	500	0%	+25%
GoS diesel	459	+2%	+15%
Manually refined petrol	300	-5%	+3%
Manually refined diesel	268	+1%	+10%
Cooking fuel	7,500	0%	0%

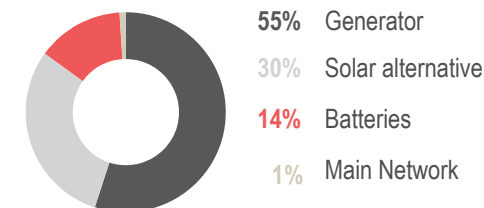
Communities that reported insufficient amounts of fuel to meet household needs:⁷



772 communities reported no lack of fuel. Most common strategies to cope with lack of fuel in the remaining **150** assessed communities:^{3,5,6}



Primary source of electricity reported:³



METHODOLOGY

HSOS data collection is conducted through an enumerator network in accessible locations throughout Idleb, Aleppo, northern Hama, Deir-ez-Zor, Ar-Raqqa, and Al-Hasakeh governorates. REACH enumerators are based inside Syria and interview Key Informants (KIs) directly in the community about which they are reporting. Where access and security constraints render direct data collection unfeasible, some KI interviews are conducted remotely through participants identified in camps and settlements in neighbouring countries by REACH field teams. Participants contact multiple KIs in their community in Syria to collect information about their community. KIs are asked to report at the community level. This factsheet presents information gathered in 1,728 communities. Data was collected during the month of September 2019, and refers to the situation in August 2019.

KIs generally included local council members, Syrian NGO workers, medical professionals, teachers, shop owners and farmers, among others, and were chosen based on their community-level or sector specific knowledge. In cases where KIs disagree on a certain piece of information, enumerators triangulate the data with secondary sources or select the response provided by the KI with the more relevant sector-specific background. For each question asked, confidence levels are assigned based on the KIs' area of expertise and knowledge of the sector-specific situation. The confidence levels associated with each question are presented in the [final dataset](#). The full confidence matrix used to assign confidence levels is available upon request.

Findings are triangulated through secondary sources, including news monitoring and humanitarian reports. Where necessary, follow-up is conducted with enumerators and participants. Findings are indicative rather than representative, and should not be generalised across the region.

ENDNOTES

¹ According to an exchange rate of 1 USD = 614 SYP (see [Syria Market Monitoring Dataset August 2019](#)).

² Includes HSOS data for Idleb, Aleppo, northern Hama, Deir-ez-Zor, Ar-Raqqa and Al-Hasakeh governorates.

³ By percentage of communities reporting. ⁴ 18 items comprise the Survival Minimum Expenditure Basket (SMEB), which represents the minimum culturally adjusted items required to support a 6-person household for a month. SMEB items: Bread, bulgur, chicken, eggs, fresh vegetables, ghee/vegetable oil, red lentils, rice, salt, sugar, tomato paste, bathing soap, laundry/dish soap, sanitary pads, toothpaste, cooking fuel, water trucking, smartphone data, float (other costs).

⁵ Assessed using select multiple questions. ⁶ Not all surveys have answers for every question, in these scenarios the KI or participant will input no answer. When the dataset has no answer for a particular question the reported number of assessed communities will not add up to the total number of communities assessed and percentages will be calculated based on submitted responses. ⁷ Based on KI perception of sufficiency.

About REACH

REACH facilitates the development of information tools and products that enhance the capacity of aid actors to make evidence-based decisions in emergency, recovery and development contexts. The methodologies used by REACH include primary data collection and in-depth analysis, and all activities are conducted through inter-agency aid coordination mechanisms. REACH is a joint initiative of IMPACT Initiatives, ACTED and the United Nations Institute for Training and Research - Operational Satellite Applications Programme (UNITAR-UNOSAT). For more information please visit our website: www.reach-initiative.org. You can contact us directly at: geneva@reach-initiative.org and follow us on Twitter @ [REACH info](#).