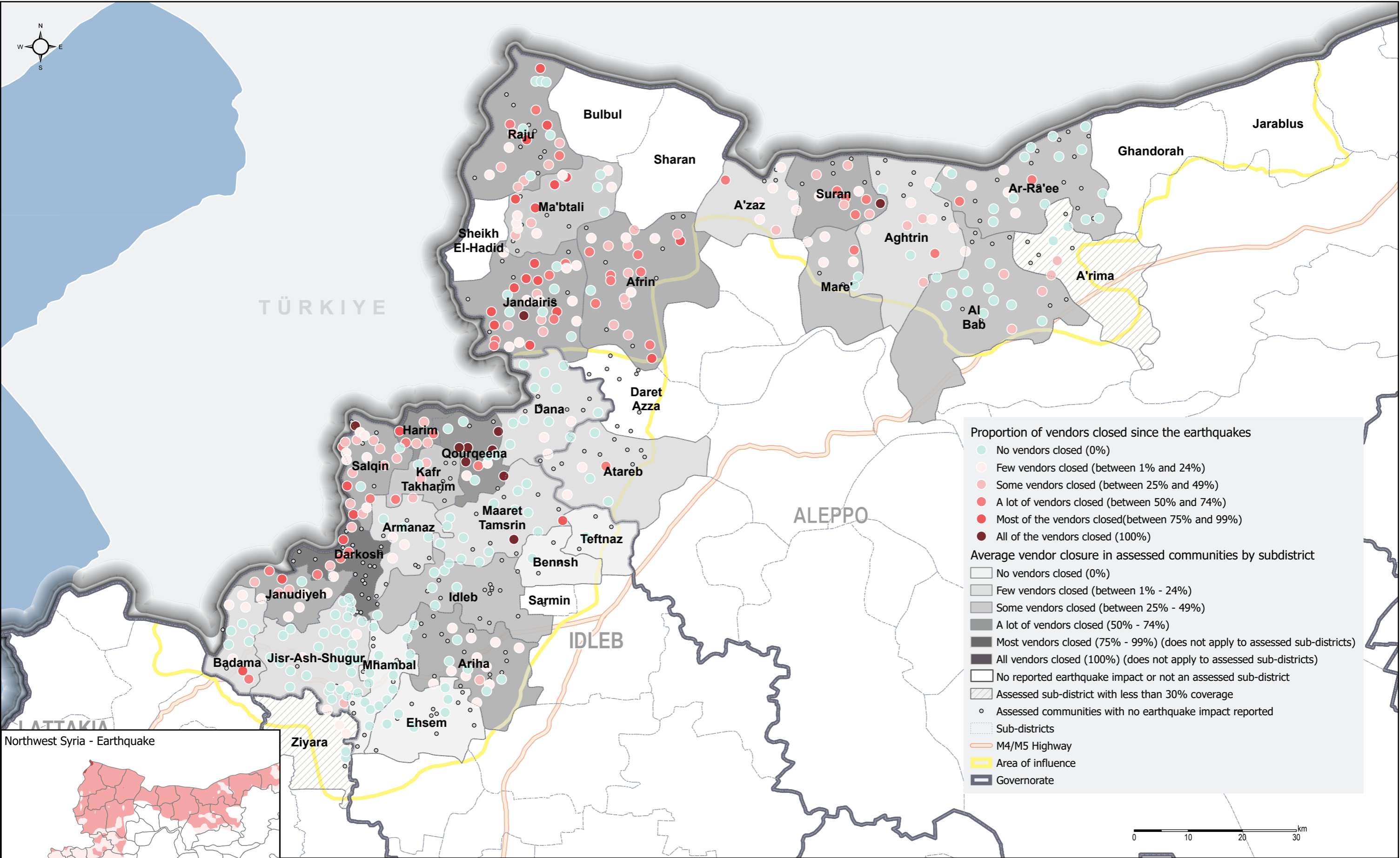


Change in Number of Vendors Operating Since the Earthquakes

As reported by KIs in assessed communities in which direct earthquake impacts were reported- 12 February 2023

For Humanitarian Purposes Only  
Production date : 12 February 2023



Data sources:  
- OCHA Common Operational Dataset (community locations, admin3 boundaries);  
- Open street maps road layer  
- [https://www.impact-repository.org/document/repository/44e2a8c1/REACH\\_NWS-NGO-Forum\\_Earthquake\\_RNA\\_Dataset\\_to-share\\_v2-1.xlsx](https://www.impact-repository.org/document/repository/44e2a8c1/REACH_NWS-NGO-Forum_Earthquake_RNA_Dataset_to-share_v2-1.xlsx)  
Coordinate System: GCS WGS 1984  
Contact: [reach.mapping@impact-initiatives.org](mailto:reach.mapping@impact-initiatives.org)

Note: Data, designations and boundaries contained on this map are not warranted to be error-free and do not imply acceptance by the REACH partners, associates, donors mentioned on this map.

