

SYRIA MARKET MONITORING EXERCISE

Snapshot: 10-17 September 2018

Cash-Based Responses
Technical Working Group

REACH Informing more effective humanitarian action

INTRODUCTION

To inform humanitarian cash programming, REACH and the Cash-Based Responses Technical Working Group (CBR-TWG) conduct monthly market monitoring throughout Syria to assess the availability and prices of 36 basic commodities that are typically sold in markets and consumed by average Syrian households, including food and non-food items, water, fuel, and cellphone data.

Of these, 18 items comprise the Survival Minimum Expenditure Basket (SMEB), see below, which represents the minimum culturally adjusted items required to support a 6-person household for a month.

Data was collected this month by ACTED, CARE, Shafak, Concern, GOAL, Ihsan, IRC, Mercy Corps, People in Need, REACH, Solidarités International, STC Shafak Violet, and Watan.

Datasets are available on the [REACH Resource Centre](#), [the Humanitarian Data Exchange](#), and are also distributed through partners across the humanitarian community.

SURVIVAL MINIMUM EXPENDITURE BASKET (SMEB) CONTENTS

	Item	Quantity	
Food Items	Bread	37 kg	
	Bulgur	15 kg	
	Chicken	6 kg	
	Eggs	6 kg	
	Fresh vegetables	12 kg	
	Ghee/vegetable oil	7 kg/L	
	Red lentils	15 kg	
	Rice	19 kg	
	Salt	1 kg	
	Sugar	5 kg	
	Tomato paste	6 kg	
	Hygiene items	Bathing soap	12 bars
		Laundry/dish soap	3 kg
Sanitary pads		4 packs of 10	
Toothpaste		200 g	
Fuel	Cooking fuel*	25 L	
Water	Water trucking	4500 L	
Telecom	Smartphone data	1 GB	
Other	Float (other costs)**	7.5% total value	

* Kerosene in northern Syria; LP Gas in southern Syria

** Float only applied to observations where prices of all SMEB contents could be collected

KEY DEVELOPMENTS

North: US dollar price fluctuates

The US dollar (USD) rate has increased in northwest by 2% and northeast Syria by 3%, since August 2018. The median exchange rate is 459 Syrian Pounds (SYP) to 1 USD and 461 SYP to 1 USD in northwest and northeast Syria, respectively. Both of these exchange rates are the highest recorded prices since April 2018 in the northwest and March 2018 in the northeast. Both northwest and northeast prices are significantly lower than a year ago at 511.25 and 510 SYP to 1 USD, respectively. The increases in the cost of USD to SYP can increase the cost of all SMEB items in USD and consequently increase the overall SMEB cost.

North: transport fuel increases

In northwest Syria there has been a reported increase in transport fuel (petrol and diesel) by 4% to a median price of 319 SYP per litre. These increases in prices

were reportedly due to road closures and due to the associated costs of importing petrol from Turkey. In northeast Syria, transport fuel prices have increased by 46% to a median price of 170 SYP per litre. Fuel prices have reportedly increased in some sub-districts due to winter approaching and a higher demand of fuel for heating.

Northeast: cellphone data prices fluctuate

Throughout north Syria cellphone data prices have fluctuated. In northeast Syria there has been a 0% change in median price since August 2018, however, Al-Malikeyyeh had a reported decrease in price by 78% to 1,000 SYP per GB. In contrast there was a large increase in the sub-district Karama, which reported a 64% increase in price to 4,096 SYP per gigabyte (GB), since August 2018. These fluctuations in price by sub-district and since August 2018 are reportedly due to current and previous deals on cellphone data.

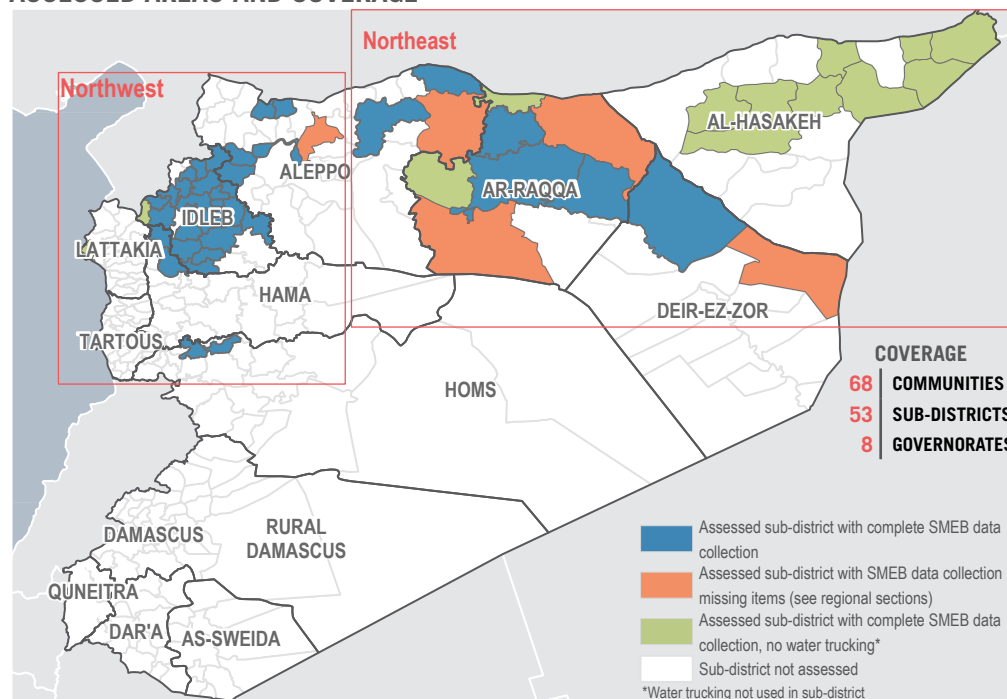
Northwest: water prices increase

Within north Syria, water prices have reportedly increased. The reported median price in northwest Syria was 2,455 SYP, which has increased by 5% since August 2018. In the sub-district Bennis water trucking prices have increased dramatically, by 47% to 1,980 SYP per 4,500 L. The increases in water trucking prices may be associated with the increases in transport fuel costs.

North: winterisation items

During this market monitoring round, 10 winterisation items were introduced including men's, women's and children's winter jackets and boots, adult and children's winter hats as well as mattresses and winter blankets. These items will be included over the winter months in [northwest Syria](#) and [northeast Syria](#).

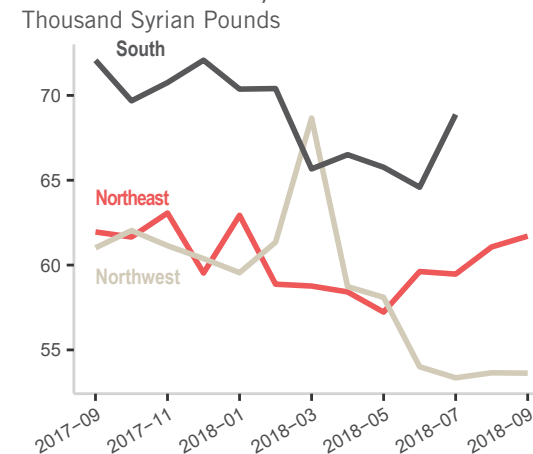
ASSESSED AREAS AND COVERAGE



MEDIAN SMEB COST IN SYP (USD), BY REGION

53,628 SYP (116.96 USD)	NORTHWEST SYRIA - HOMS, HAMA, IDLEB, LATTAKIA, & WESTERN ALEPPO GOVERNORATES
61,704 SYP (132.69 USD)	NORTHEAST SYRIA - AL-HASAKEH, AL-RAQQA, DEIR-EZ-ZOR & EASTERN ALEPPO GOVERNORATES

MEDIAN SMEB COSTS, BY MONTH & REGION



KEY DEVELOPMENTS

Hygiene item prices decrease

SMEB hygiene items have been steadily decreasing in price over the last year. Prices have decreased by 15% over the last six months since April 2018 and by 10% since August 2018, to a median of 3,783 SYP. Kafr Nobel sub-district reported the largest decrease in median price by 38% to 2,525 SYP, since August 2018 and by 37% since April 2018. This decrease is reportedly due to low quality bathing soap products being available at a lower price.

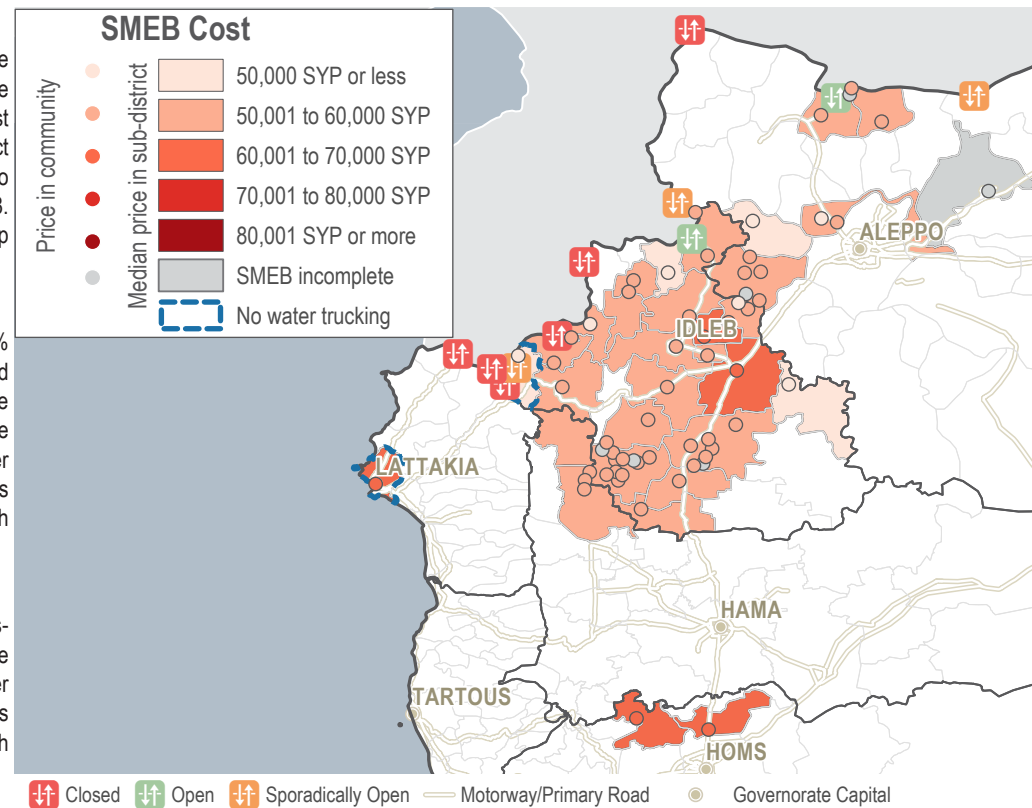
Road closures increase transport fuel prices

There has been a reported increase in transport fuel by 4% to 319 SYP per L, however, this median price has fluctuated within the last year and a 4% increase is not unusual. The sub-district Tefnaz reported the largest median price increase in transport fuel since August 2018, by 18% to 323 SYP per litre. Transport fuel prices increased due to road closures and because of increased transport costs associated with importing transport fuel from Turkey.

Water prices in Bennsh increase dramatically

Water trucking prices in Bennsh have been steadily increasing, after a sudden decrease in April 2018. However, these prices have increased dramatically, by 47% to 1,980 SYP per 4,500 litres since August 2018 and 13% since April 2018. This price is still below the northwest median of 2,455 SYP, which has increased by 5% since August 2018.

SMEB COST RANGES (SYP), BY SUB-DISTRICTS & COMMUNITIES



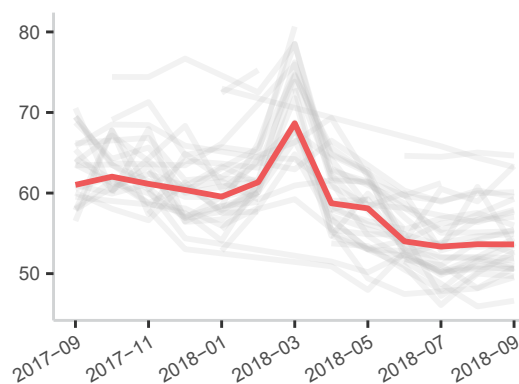
SUB-DISTRICTS WITH INCOMPLETE SMEBS IN SEPTEMBER

SUB-DISTRICT	MISSING ITEMS
Al Bab	Only household items collected

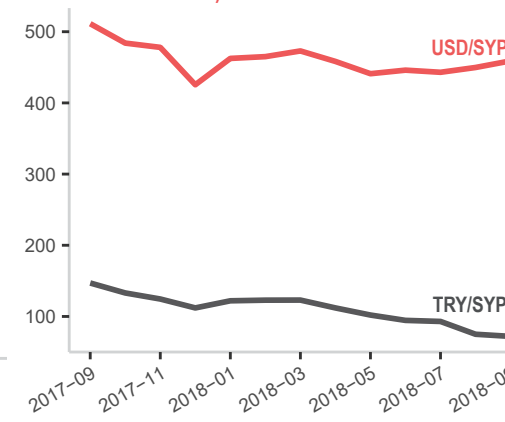
Note: A lack of data for a SMEB item does not imply a shortage

MEDIAN SMEB COSTS, BY MONTH

Thousand Syrian Pounds



EXCHANGE RATES, BY MONTH & CURRENCY



MEDIAN SMEB COSTS & CHANGES

Syrian Pounds

Sub-district	SMEB	One month change	Six month change
Northwest Syria	53,628	0%	-9%
Abul Thohur	46,634	+2%	NA
Al Bab	NA	NA	NA
Ariha	57,040	NA	0%
Armanaz	51,008	-2%	-12%
Atareb	55,983	-3%	+2%
A'zaz	59,531	-1%	-10%
Badama	NA	NA	NA
Bennsh	60,106	0%	-7%
Dana	50,733	+5%	-27%
Daret Azza	49,541	+3%	-11%
Darkosh	53,628	+1%	-3%
Ehsem	54,913	0%	-16%
Haritan	50,592	0%	NA
Heish	53,501	NA	5%
Idleb	55,470	+2%	-14%
Janudiyeh	51,920	0%	-8%
Jisr-Ash-Shugur	57,706	+2%	-7%
Kafr Nobel	51,837	+2%	-6%
Kafr Takharim	52,554	-3%	-14%
Khan Shaykun	59,273	NA	-3%
Lattakia*	67,762	0%	-2%
Maaret Tamsrin	57,920	+2%	-7%
Ma'arrat An Nu'man	54,376	+4%	+6%
Madiq Castle	50,612	-2%	-6%
Qourqeena	49,675	-1%	-13%
Saraqab	63,364	+7%	-2%
Sarmin	55,271	0%	-12%
Suran	53,294	-12%	-13%
Talbiseh	63,232	-2%	NA
Taldu	64,651	-1%	NA
Tefnaz	52,702	+5%	-10%
Ziyara	50,608	0%	-7%

* Denotes sub-districts where water trucking is not common, and therefore does not have water trucking prices in the SMEB cost

MEDIAN SMEB FOOD ITEMS

See Page 1, Syrian Pounds

Sub-district	SMEB Food Items	One month change	Six month change
Northwest Syria	37,526	+3%	-7%
Abul Thohur	32,080	+2%	NA
Al Bab	NA	NA	NA
Ariha	40,500	NA	+1%
Armanaz	35,240	-1%	-7%
Atareb	38,595	-4%	+7%
A'zaz	39,770	-4%	-13%
Badama	36,875	+8%	-9%
Bennsh	42,459	+2%	-5%
Dana	34,913	+6%	-16%
Daret Azza	35,408	+5%	-7%
Darkosh	37,526	+6%	+1%
Ehsem	37,430	+3%	-17%
Haritan	35,593	0%	NA
Heish	39,036	NA	12%
Idleb	39,236	+2%	-5%
Janudiyeh	36,161	+2%	-5%
Jisr-Ash-Shugur	39,436	+4%	-7%
Kafr Nobol	36,380	+7%	-3%
Kafr Takharim	35,574	-4%	-13%
Khan Shaykun	41,288	NA	0%
Lattakia	49,084	-1%	-3%
Maaret Tamsrin	39,989	+2%	-3%
Ma'arrat An Nu'man	38,413	+5%	+8%
Madiq Castle	34,741	0%	-3%
Qourqeena	34,835	+1%	-5%
Saraqab	45,160	+11%	+2%
Sarmin	39,226	-1%	-9%
Suran	35,070	-16%	-16%
Talbiseh	44,295	0%	NA
Taldu	44,265	+2%	NA
Teftnaz	36,838	+8%	-6%
Ziyara	34,445	+2%	-4%

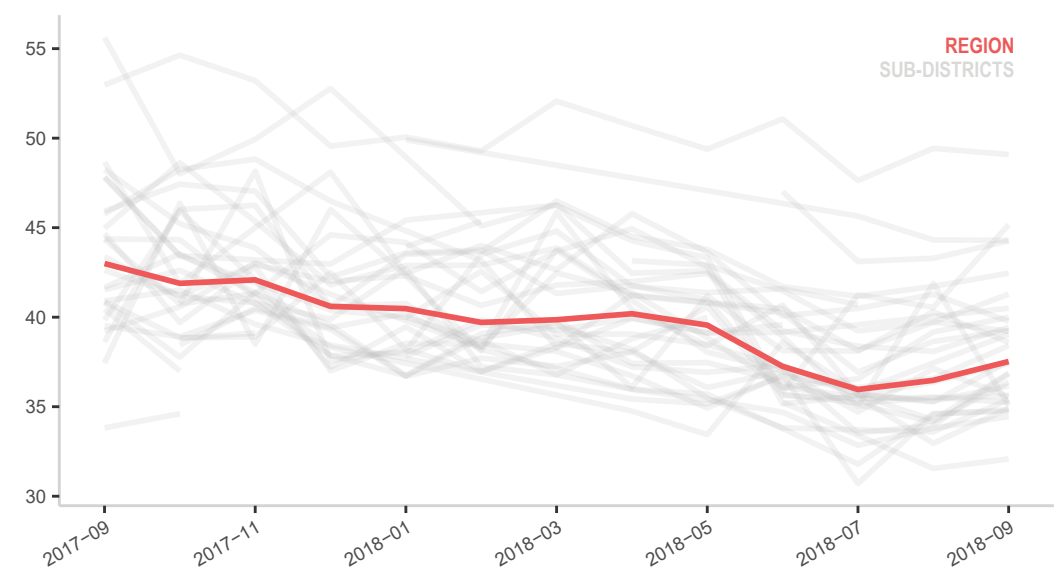
MEDIAN SMEB COOKING FUEL

Kerosene 25L, Syrian Pounds

Sub-district	SMEB Cooking Fuel	One month change	Six month change
Northwest Syria	6,250	0%	-17%
Abul Thohur	6,250	0%	NA
Al Bab	NA	NA	NA
Ariha	6,250	NA	-9%
Armanaz	6,250	0%	-17%
Atareb	6,250	0%	-17%
A'zaz	5,625	-6%	-18%
Badama	6,250	0%	-17%
Bennsh	6,625	-9%	-23%
Dana	6,344	+2%	-60%
Daret Azza	6,250	0%	-29%
Darkosh	6,250	0%	0%
Ehsem	6,563	0%	-20%
Haritan	6,250	0%	NA
Heish	6,250	NA	-17%
Idleb	6,875	+10%	-21%
Janudiyeh	6,250	0%	-17%
Jisr-Ash-Shugur	6,250	0%	-9%
Kafr Nobol	6,250	0%	-17%
Kafr Takharim	5,625	-10%	-18%
Khan Shaykun	5,875	NA	-15%
Lattakia	3,750	0%	0%
Maaret Tamsrin	6,250	0%	-29%
Ma'arrat An Nu'man	6,250	+5%	-17%
Madiq Castle	6,063	-12%	-19%
Qourqeena	5,625	0%	-18%
Saraqab	6,250	0%	-21%
Sarmin	6,875	+10%	-21%
Suran	6,250	0%	-9%
Talbiseh	3,500	0%	NA
Taldu	3,500	0%	NA
Teftnaz	5,000	-9%	-33%
Ziyara	6,250	-9%	-23%

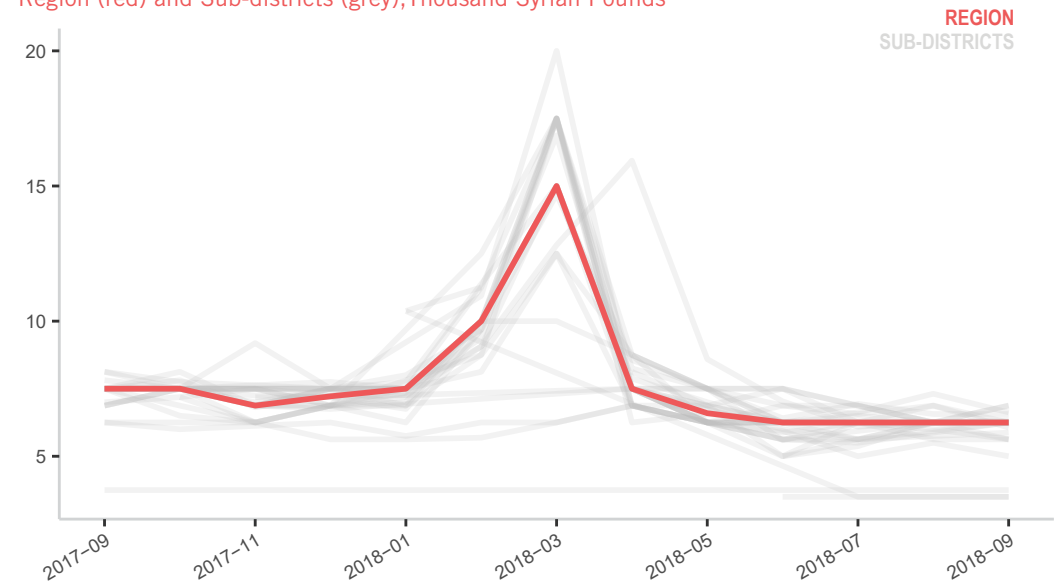
MEDIAN SMEB FOOD COSTS, BY MONTH

Region (red) and Sub-districts (grey), Thousand Syrian Pounds



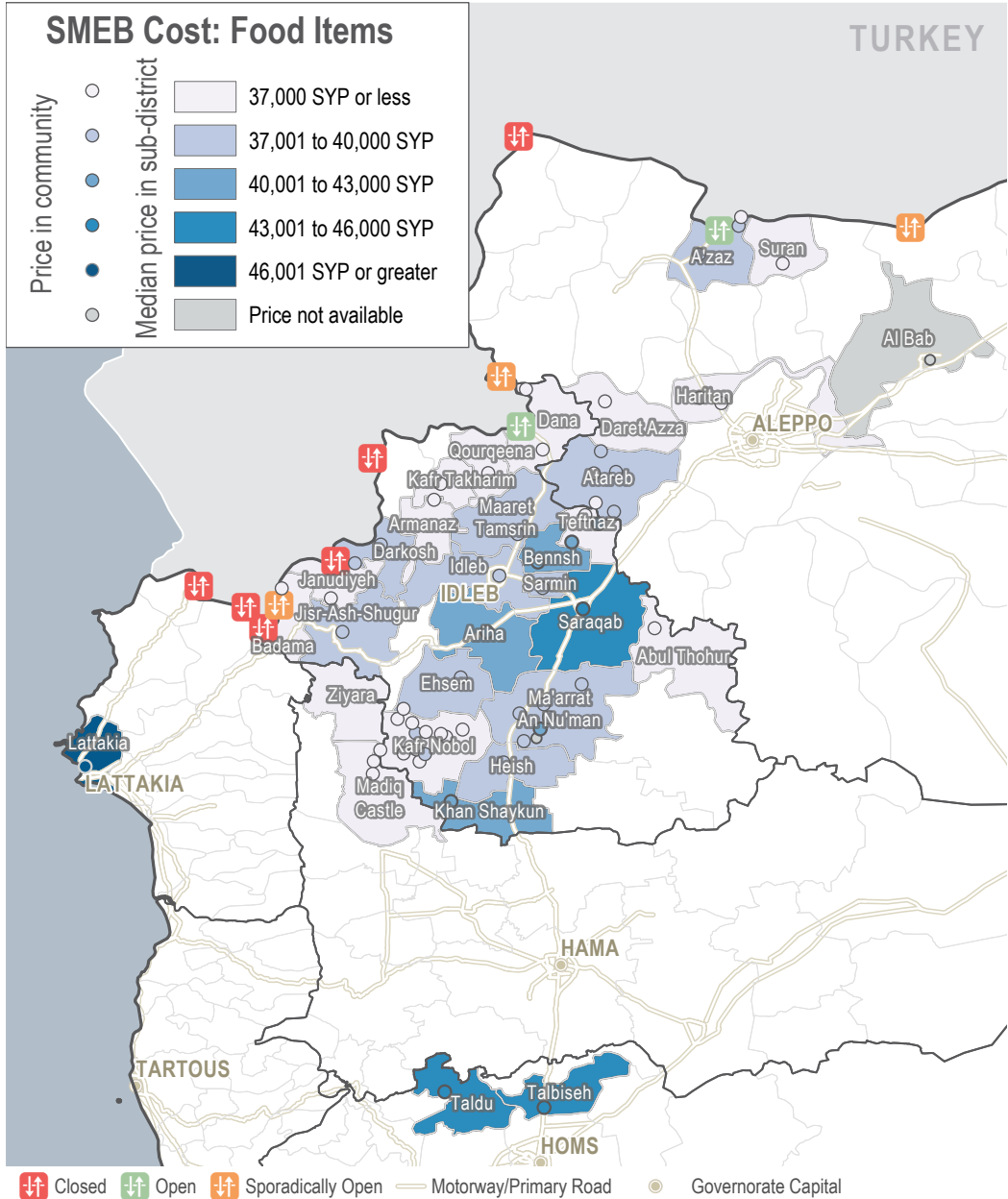
MEDIAN SMEB COOKING FUEL COSTS, BY MONTH

Region (red) and Sub-districts (grey), Thousand Syrian Pounds



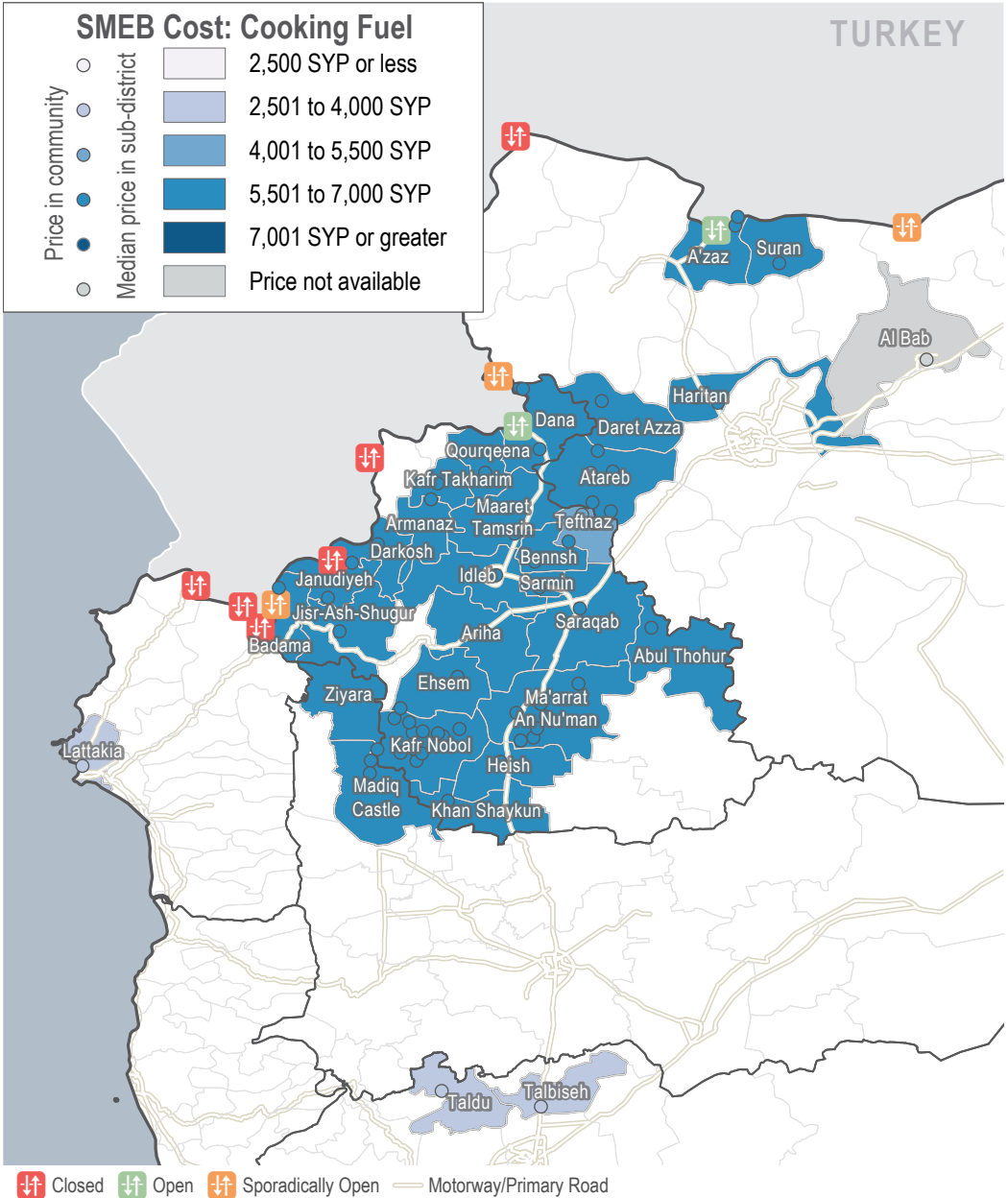
SMEB FOOD ITEMS

Sub-districts & communities, Syrian Pounds



SMEB COOKING FUEL

Sub-districts & Communities, Syrian Pounds



MEDIAN SMEB WATER TRUCKING

4,500L, Syrian Pounds

Sub-district	SMEB Water Truck	One month change	Six month change
Northwest Syria	2,455	+5%	-4%
Abul Thohur	1,800	0%	NA
Al Bab	NA	NA	NA
Ariha	3,060	NA	0%
Armanaz	2,455	+2%	-26%
Atareb	1,620	+38%	-12%
A'zaz	3,150	-8%	-13%
Badama	NA	NA	NA
Bennsh	1,980	+47%	+13%
Dana	1,890	-3%	-7%
Daret Azza	1,710	-25%	-19%
Darkosh	2,565	-24%	-22%
Ehsem	2,588	0%	+15%
Haritan	1,620	-5%	NA
Heish	1,665	NA	-12%
Idleb	1,530	+13%	-66%
Janudiyeh	2,138	0%	-15%
Jisr-Ash-Shugur	3,060	0%	0%
Kafr Nobol	2,565	+2%	+36%
Kafr Takharim	2,789	+2%	+26%
Khan Shaykun	2,970	NA	0%
Lattakia	NA	NA	NA
Maaret Tamsrin	2,475	+22%	+17%
Ma'arrat An Nu'man	2,835	-1%	+68%
Madiq Castle	2,138	-12%	-10%
Qourqeena	1,305	-9%	-30%
Saraqab	2,520	+10%	-11%
Sarmin	1,305	+12%	-15%
Suran	3,015	0%	-6%
Talbiseh	3,150	0%	NA
Taldu	4,500	0%	NA
Teftnaz	1,890	0%	-30%
Ziyara	2,250	-9%	-14%

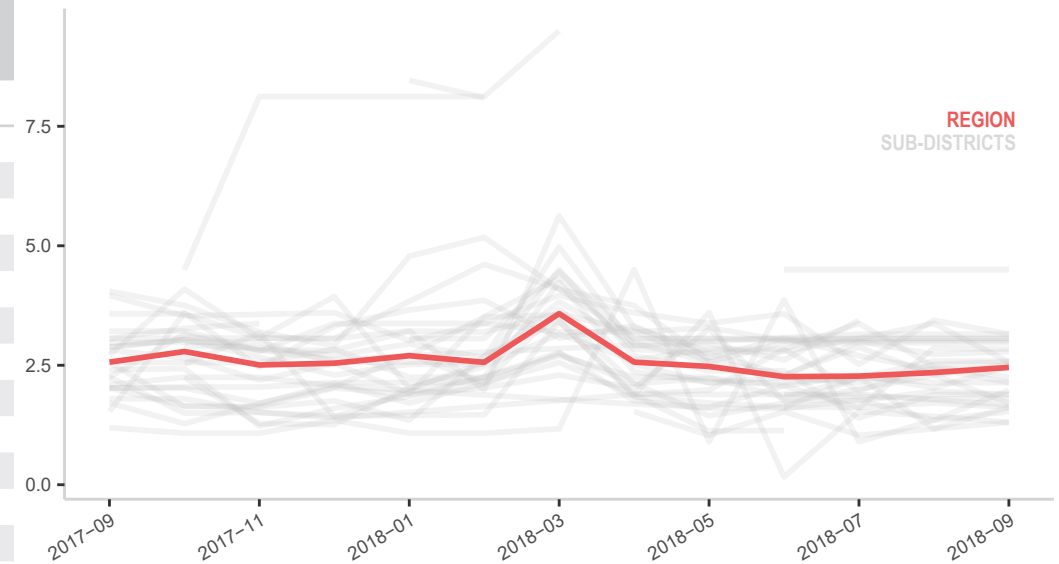
MEDIAN TRANSPORT FUEL PRICE

Diesel and Petrol 1L (Government of Syria and Manually Refined), Syrian Pounds

Sub-district	Diesel and Petrol	One month change	Six month change
Northwest Syria	319	+4%	0%
Abul Thohur	298	+6%	NA
Al Bab	NA	NA	NA
Ariha	315	NA	2%
Armanaz	323	+8%	-4%
Atareb	319	+4%	-4%
A'zaz	290	+1%	-9%
Badama	300	+5%	-10%
Bennsh	302	-3%	-6%
Dana	264	0%	-37%
Daret Azza	272	-15%	-18%
Darkosh	283	-16%	-7%
Ehsem	300	-3%	-12%
Haritan	306	-2%	NA
Heish	324	NA	-4%
Idleb	319	-6%	-1%
Janudiyeh	315	+7%	0%
Jisr-Ash-Shugur	302	+3%	+4%
Kafr Nobol	319	+2%	+5%
Kafr Takharim	270	-10%	-13%
Khan Shaykun	319	NA	-6%
Lattakia	203	0%	0%
Maaret Tamsrin	264	-22%	-18%
Ma'arrat An Nu'man	313	+9%	-5%
Madiq Castle	294	-7%	-6%
Qourqeena	263	-8%	-4%
Saraqab	321	-3%	+4%
Sarmin	325	-4%	+2%
Suran	294	0%	-1%
Talbiseh	338	-10%	NA
Taldu	338	-10%	NA
Teftnaz	323	+18%	+4%
Ziyara	300	-4%	-8%

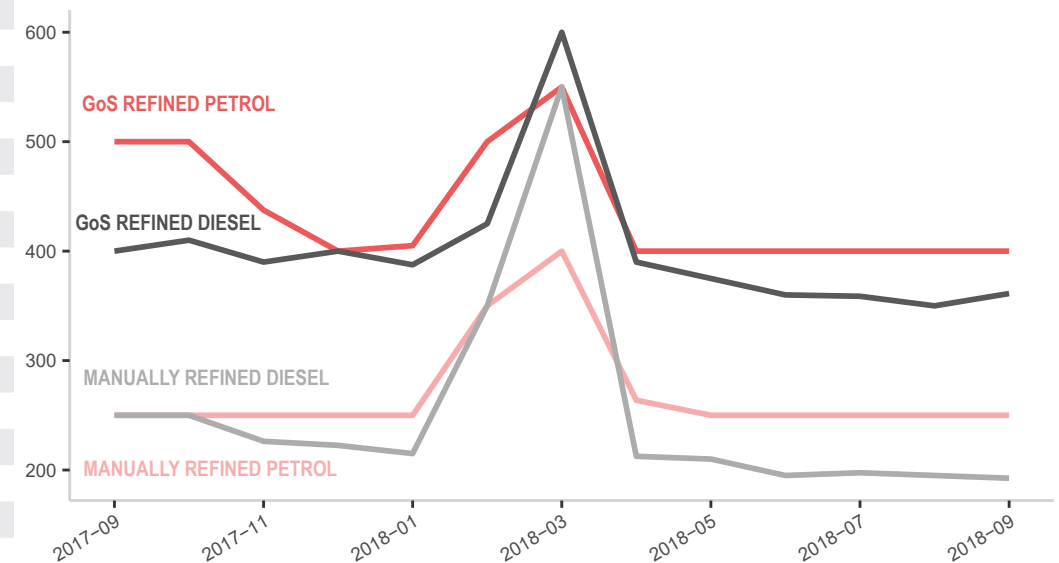
MEDIAN SMEB WATER TRUCKING COSTS, BY MONTH

Thousand Syrian Pounds



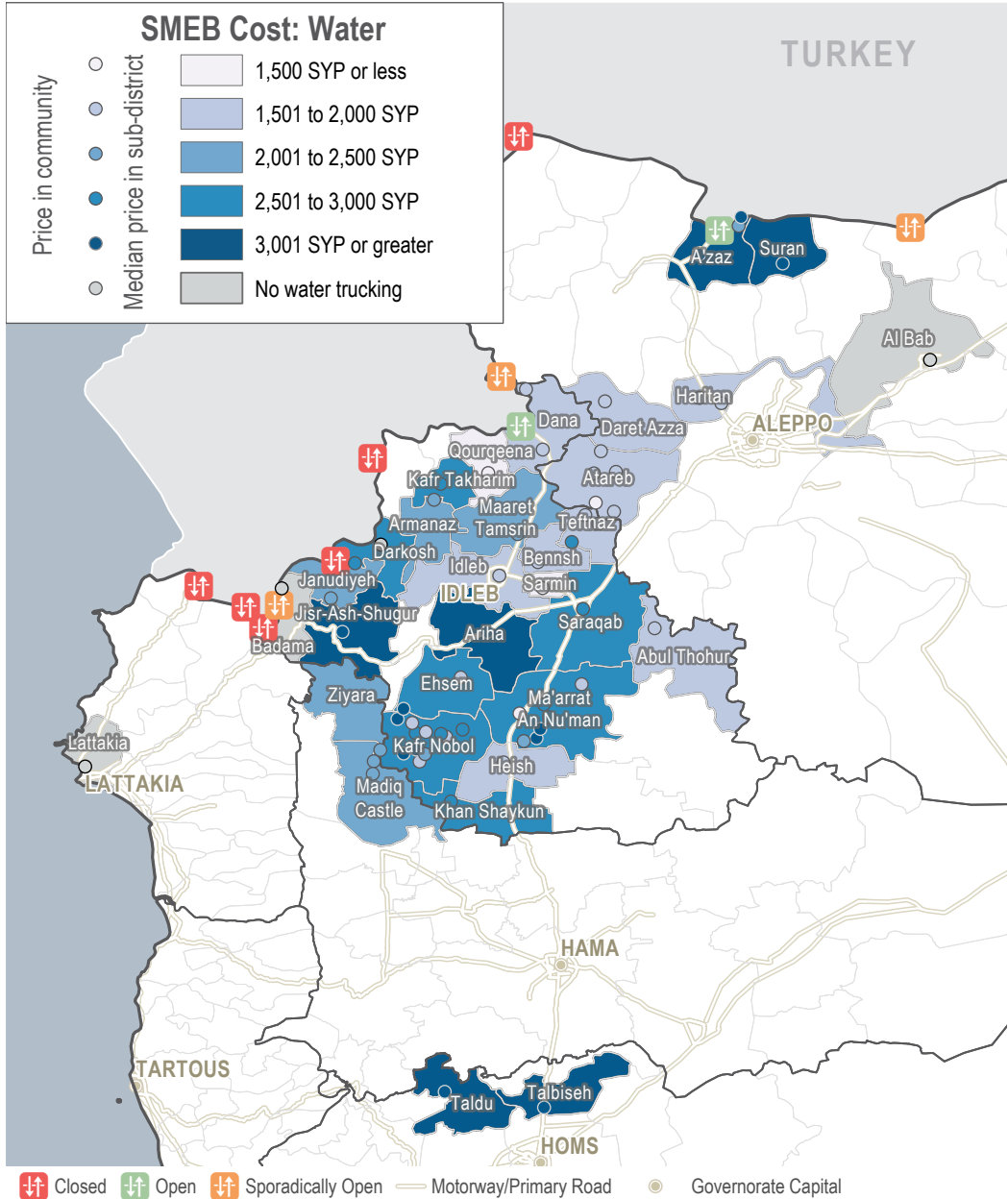
MEDIAN TRANSPORT FUEL COSTS, BY MONTH & TYPE

Syrian Pounds



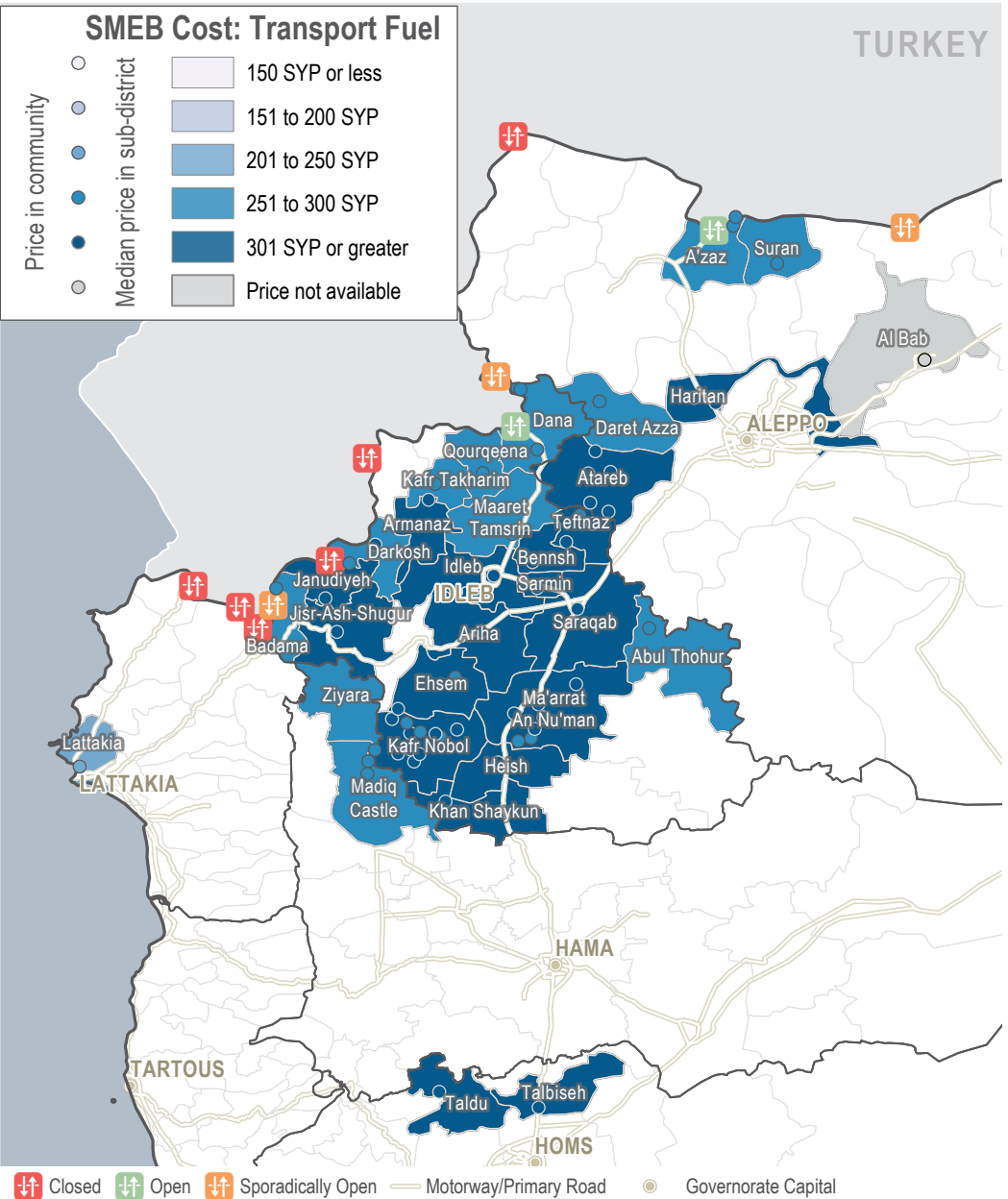
SMEB WATER TRUCKING

Sub-districts & communities, Syrian Pounds



TRANSPORT FUEL

Sub-districts & communities, Syrian Pounds



MEDIAN SMEB HYGIENE ITEMS

12 bars soap, 4 packs of 10 sanitary pads, 200g toothpaste, Syrian Pounds

Sub-district	SMEB Hygiene Items	One month change	Six month change
Northwest Syria	3,783	-10%	-15%
Abul Thohur	2,900	+3%	NA
Al Bab	NA	NA	NA
Ariha	2,850	NA	0%
Armanaz	3,205	-11%	-21%
Atareb	5,112	-3%	+3%
A'zaz	4,433	-3%	-4%
Badama	2,853	NA	-13%
Bennsh	4,361	-11%	-9%
Dana	3,247	+9%	-18%
Daret Azza	2,318	+2%	+4%
Darkosh	3,334	-21%	-21%
Ehsem	4,027	-17%	-22%
Haritan	3,100	0%	NA
Heish	2,318	NA	-15%
Idleb	3,659	-5%	-23%
Janudiyeh	3,250	-23%	-22%
Jisr-Ash-Shugur	4,409	-3%	-3%
Kafr Nobol	2,525	-38%	-37%
Kafr Takharim	4,300	19%	-12%
Khan Shaykun	4,305	NA	-10%
Lattakia	6,200	+6%	+11%
Maaret Tamsrin	4,666	-3%	-10%
Ma'arrat An Nu'man	2,685	+1%	-4%
Madiq Castle	3,740	+1%	+2%
Qourqeena	3,944	-10%	-38%
Saraqab	4,414	-14%	-7%
Sarmin	3,659	-3%	-20%
Suran	4,491	0%	+1%
Talbiseh	3,875	-1%	NA
Taldu	3,875	-8%	NA
Teftnaz	4,648	+1%	+3%
Ziyara	3,783	+1%	+1%

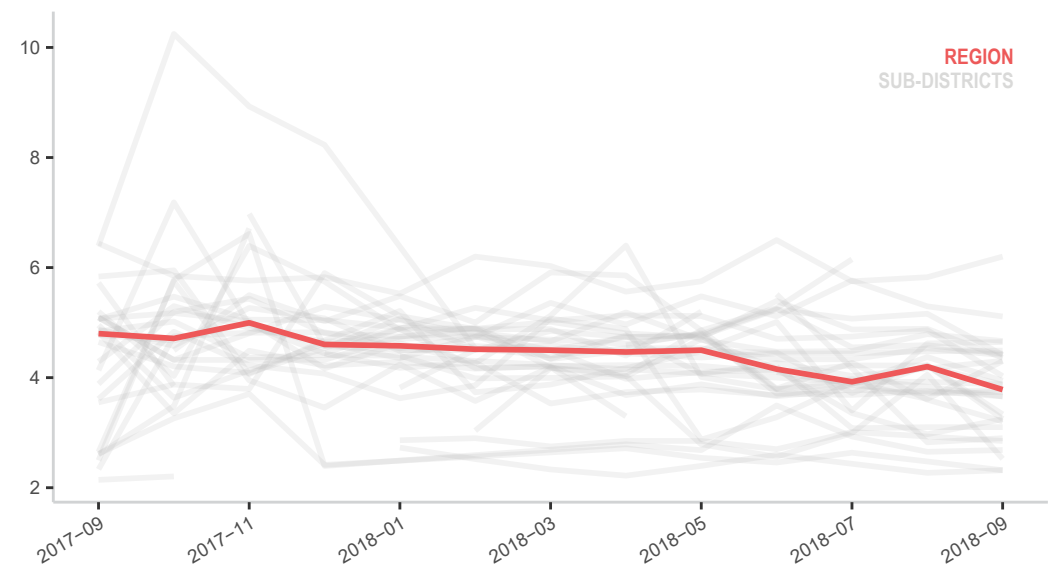
MEDIAN SMEB CELLPHONE DATA

1GB data, Syrian Pounds

Sub-district	SMEB Phone Data	One month change	Six month change
Northwest Syria	500	0%	-11%
Abul Thohur	350	+17%	NA
Al Bab	NA	NA	NA
Ariha	400	NA	0%
Armanaz	300	-40%	-68%
Atareb	500	0%	0%
A'zaz	2,400	+200%	+140%
Badama	500	0%	0%
Bennsh	488	-7%	-11%
Dana	800	+14%	0%
Daret Azza	400	0%	0%
Darkosh	213	-55%	-63%
Ehsem	475	+6%	+6%
Haritan	500	0%	NA
Heish	500	NA	0%
Idleb	300	0%	-45%
Janudiyeh	500	0%	0%
Jisr-Ash-Shugur	525	0%	-16%
Kafr Nobol	500	+25%	0%
Kafr Takharim	600	+20%	-10%
Khan Shaykun	700	NA	-7%
Lattakia	4,000	0%	0%
Maaret Tamsrin	500	0%	0%
Ma'arrat An Nu'man	400	0%	-20%
Madiq Castle	400	0%	-16%
Qourqeena	500	0%	-50%
Saraqab	600	0%	0%
Sarmin	350	0%	-42%
Suran	750	-17%	-3%
Talbiseh	4,000	-20%	NA
Taldu	4,000	-20%	NA
Teftnaz	650	0%	+8%
Ziyara	350	0%	-22%

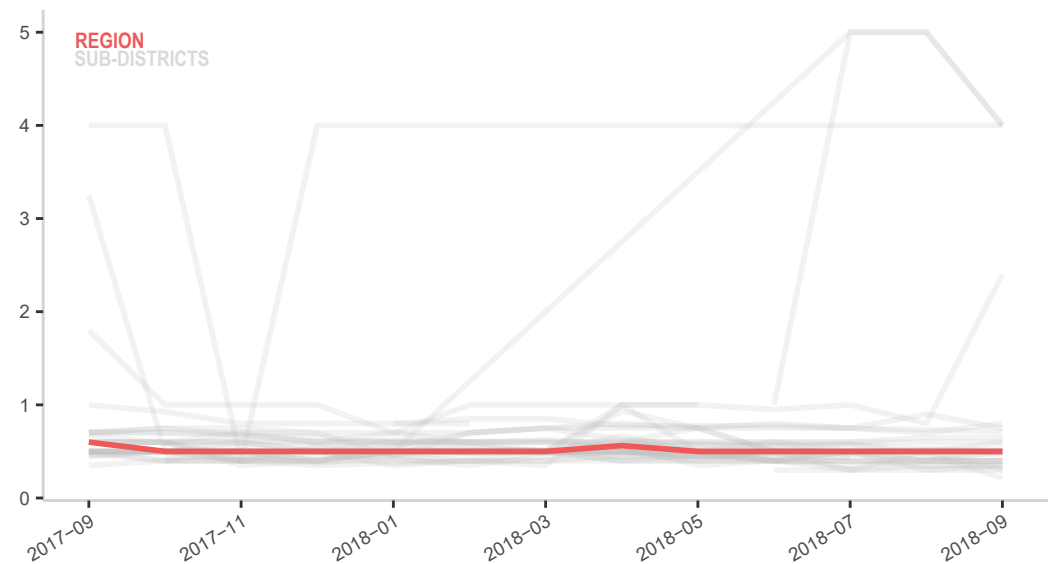
MEDIAN SMEB HYGIENE ITEMS COSTS, BY MONTH

Thousand Syrian Pounds



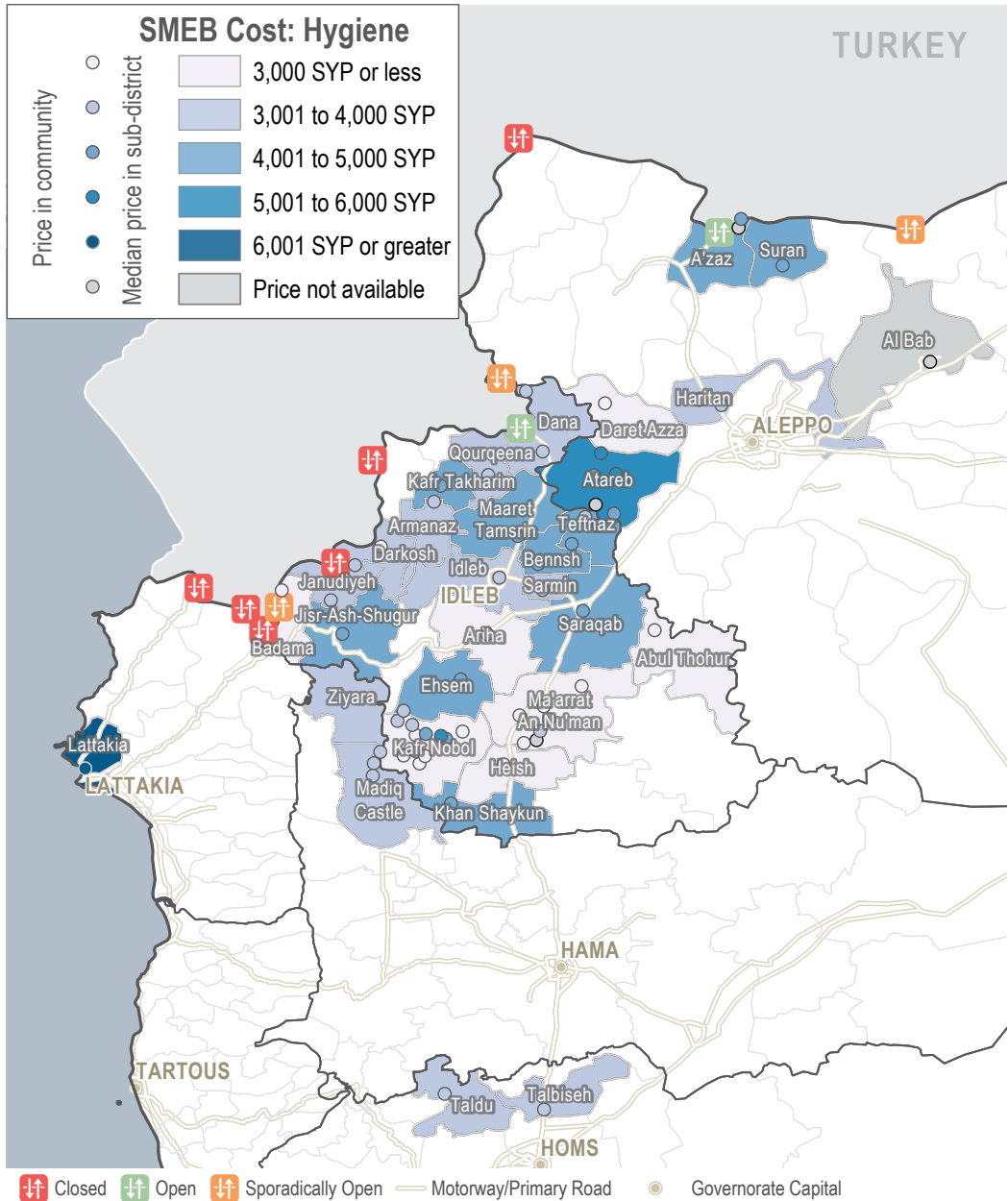
MEDIAN SMEB CELLPHONE DATA COSTS, BY MONTH

Thousand Syrian Pounds



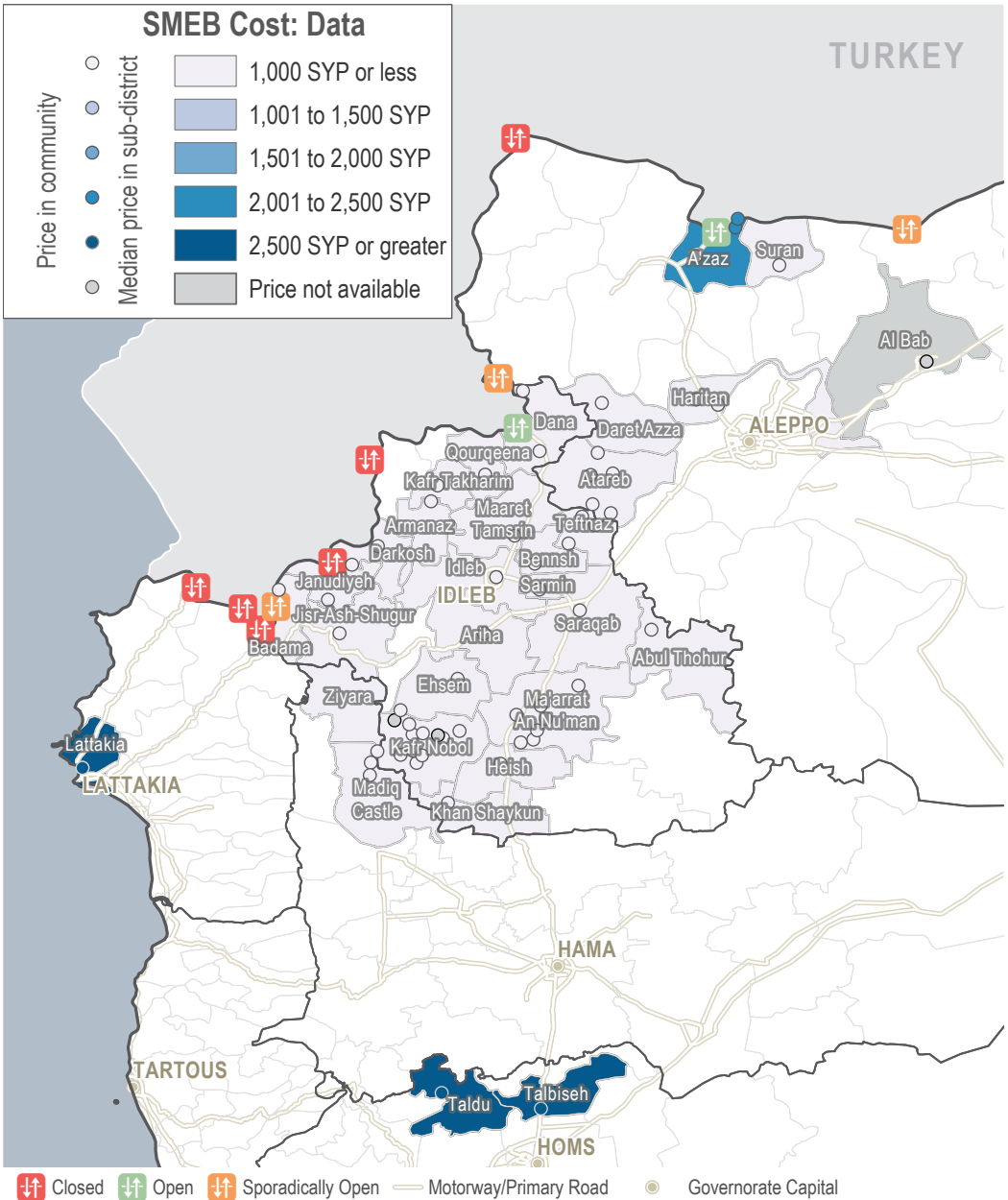
SMEB HYGIENE ITEMS

Sub-districts & Communities, Syrian Pounds



SMEB CELLPHONE DATA

Sub-districts & Communities, Syrian Pounds



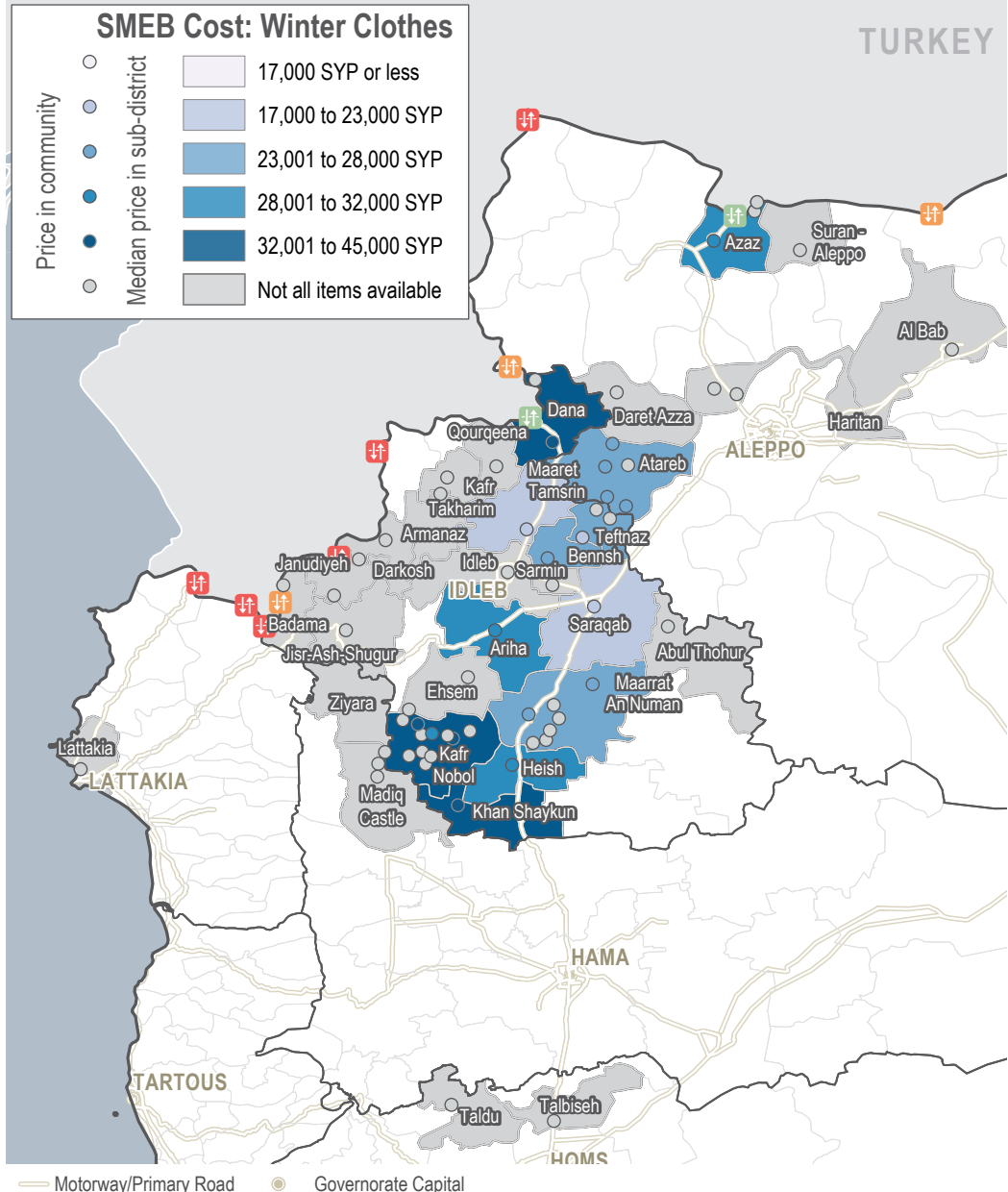
MEDIAN WINTERISATION AND HOUSEHOLD ITEMS

Per 1 winter item, Syrian Pounds

Sub-district	Mens jacket	One month change	Wom-ens jacket	One month change	Child's jacket	One month change	Mens boots	One month change	Wom-ens boots	One month change	Child's boots	One month change	Adult hat	One month change	Child's hat	One month change	Blanket	One month change	Mat-tress	One month change
Northwest	7,000	NA	8,250	NA	3,063	NA	3,000	NA	2,500	NA	2,000	NA	725	NA	500	NA	1,100	NA	5,000	NA
Abul Thohur	NA	NA	NA	NA	NA	NA	NA	NA	NA	NA	NA	NA	NA	NA	NA	NA	750	NA	2,500	NA
Al Bab	NA	NA	NA	NA	NA	NA	NA	NA	NA	NA	NA	NA	NA	NA	NA	NA	8,000	NA	10,500	NA
Ariha	7,500	NA	10,000	NA	2,500	NA	2,800	NA	2,800	NA	2,200	NA	750	NA	500	NA	6,500	NA	4,300	NA
Armanaz	NA	NA	NA	NA	NA	NA	NA	NA	NA	NA	NA	NA	NA	NA	NA	NA	8,000	NA	10,500	NA
Atareb	7,250	NA	7,125	NA	3,125	NA	2,875	NA	2,500	NA	2,000	NA	500	NA	400	NA	1,050	NA	2,125	NA
A'zaz	7,000	NA	8,000	NA	5,000	NA	3,500	NA	3,000	NA	2,000	NA	800	NA	500	NA	NA	NA	NA	NA
Badama	NA	NA	NA	NA	NA	NA	NA	NA	NA	NA	NA	NA	NA	NA	NA	NA	NA	NA	NA	NA
Bennsh	6,000	NA	6,800	NA	3,000	NA	2,400	NA	2,500	NA	1,700	NA	600	NA	500	NA	NA	NA	NA	NA
Dana	9,000	NA	10,875	NA	6,250	NA	3,000	NA	4,500	NA	3,000	NA	1,250	NA	1,250	NA	NA	NA	NA	NA
Daret Azza	NA	NA	NA	NA	NA	NA	NA	NA	NA	NA	NA	NA	NA	NA	NA	NA	NA	NA	NA	NA
Darkosh	NA	NA	NA	NA	NA	NA	NA	NA	NA	NA	NA	NA	NA	NA	NA	NA	900	NA	6,000	NA
Ehsem	NA	NA	NA	NA	NA	NA	NA	NA	NA	NA	NA	NA	NA	NA	NA	NA	1,000	NA	NA	NA
Haritan	NA	NA	NA	NA	NA	NA	NA	NA	NA	NA	NA	NA	NA	NA	NA	NA	700	NA	5,000	NA
Heish	7,000	NA	10,000	NA	3,500	NA	3,000	NA	2,000	NA	1,800	NA	500	NA	500	NA	600	NA	3,000	NA
Idleb	NA	NA	NA	NA	NA	NA	NA	NA	NA	NA	NA	NA	NA	NA	NA	NA	NA	NA	NA	NA
Janudiyeh	NA	NA	NA	NA	NA	NA	NA	NA	NA	NA	NA	NA	NA	NA	NA	NA	2,000	NA	5,750	NA
Jisr-Ash-Shugur	NA	NA	NA	NA	NA	NA	NA	NA	NA	NA	NA	NA	NA	NA	NA	NA	1,000	NA	6,500	NA
Kafr Nobol	8,000	NA	10,000	NA	4,000	NA	3,500	NA	4,000	NA	2,000	NA	700	NA	500	NA	1,000	NA	7,500	NA
Kafr Takharim	NA	NA	NA	NA	NA	NA	NA	NA	NA	NA	NA	NA	NA	NA	NA	NA	4,000	NA	3,500	NA
Khan Shaykun	9,000	NA	8,500	NA	4,000	NA	3,750	NA	3,250	NA	2,600	NA	800	NA	400	NA	2,500	NA	6,500	NA
Lattakia	NA	NA	NA	NA	NA	NA	NA	NA	NA	NA	NA	NA	NA	NA	NA	NA	1100	NA	8,000	NA
Maaret Tamsrin	6,000	NA	5,500	NA	3,000	NA	3,000	NA	2,500	NA	2,000	NA	500	NA	500	NA	1,250	NA	3,350	NA
Ma'arrat An	7,000	NA	9,000	NA	3,000	NA	2,750	NA	2,250	NA	2,000	NA	750	NA	500	NA	NA	NA	NA	NA
Madiq Castle	NA	NA	NA	NA	NA	NA	NA	NA	NA	NA	NA	NA	NA	NA	NA	NA	NA	NA	NA	NA
Qourqeena	NA	NA	NA	NA	NA	NA	NA	NA	NA	NA	NA	NA	NA	NA	NA	NA	NA	NA	NA	NA
Saraqab	5,500	NA	6,500	NA	2,500	NA	2,500	NA	2,200	NA	1,500	NA	600	NA	400	NA	NA	NA	NA	NA
Sarmin	NA	NA	NA	NA	NA	NA	NA	NA	NA	NA	NA	NA	NA	NA	NA	NA	NA	NA	NA	NA
Suran	NA	NA	NA	NA	NA	NA	1,600	NA	1,900	NA	800	NA	NA	NA	NA	NA	6,325	NA	5,000	NA
Talbiseh	NA	NA	NA	NA	NA	NA	NA	NA	NA	NA	NA	NA	NA	NA	NA	NA	700	NA	2,500	NA
Taldu	NA	NA	NA	NA	NA	NA	NA	NA	NA	NA	NA	NA	NA	NA	NA	NA	1,200	NA	7,000	NA
Teftnaz	5,250	NA	6,500	NA	2,800	NA	3,050	NA	3,100	NA	1,500	NA	775	NA	450	NA	2,500	NA	5,000	NA
Ziyara	NA	NA	NA	NA	NA	NA	NA	NA	NA	NA	NA	NA	NA	NA	NA	NA	NA	NA	NA	NA

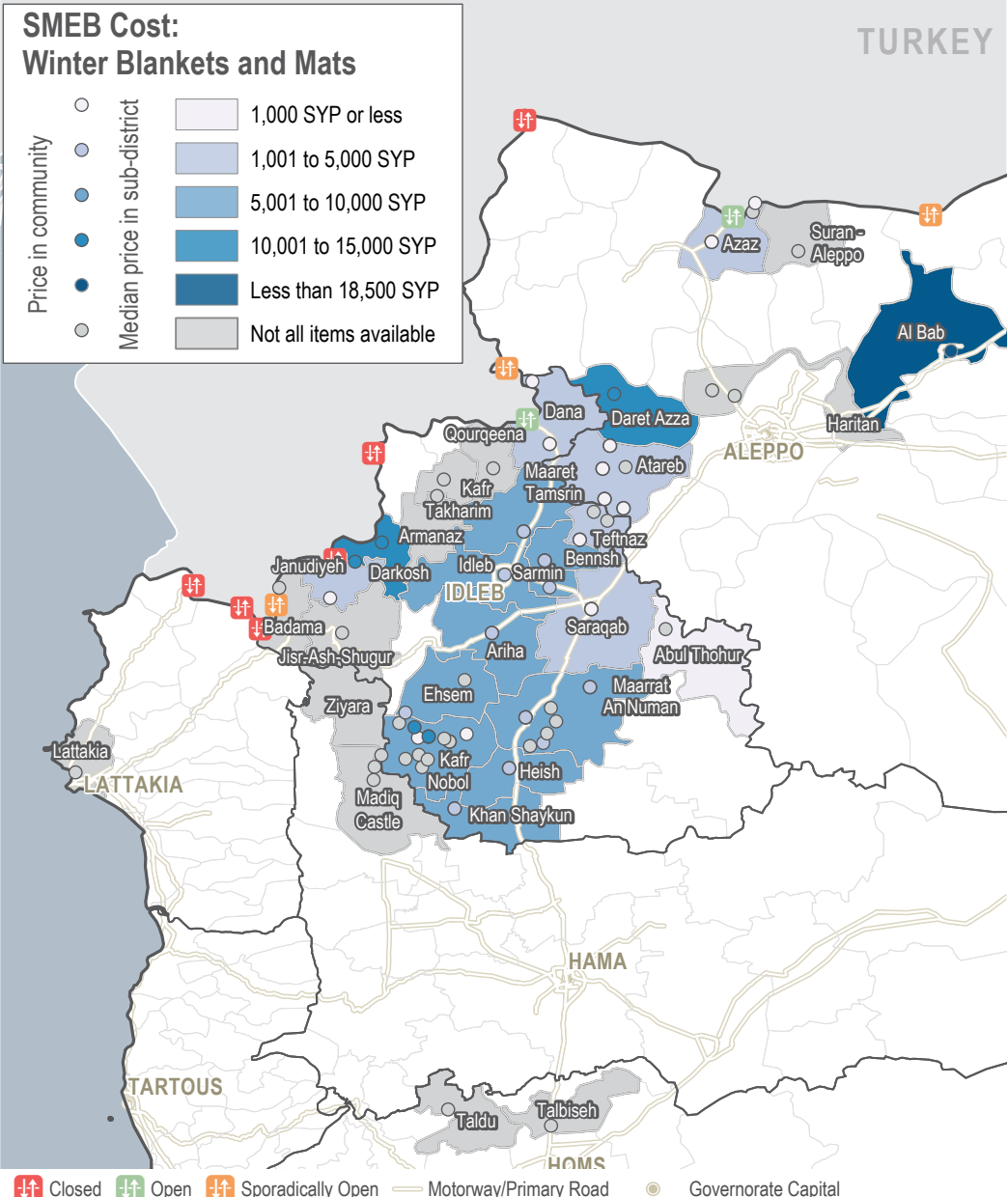
WINTER CLOTHES

Sub-districts & Communities, Syrian Pounds



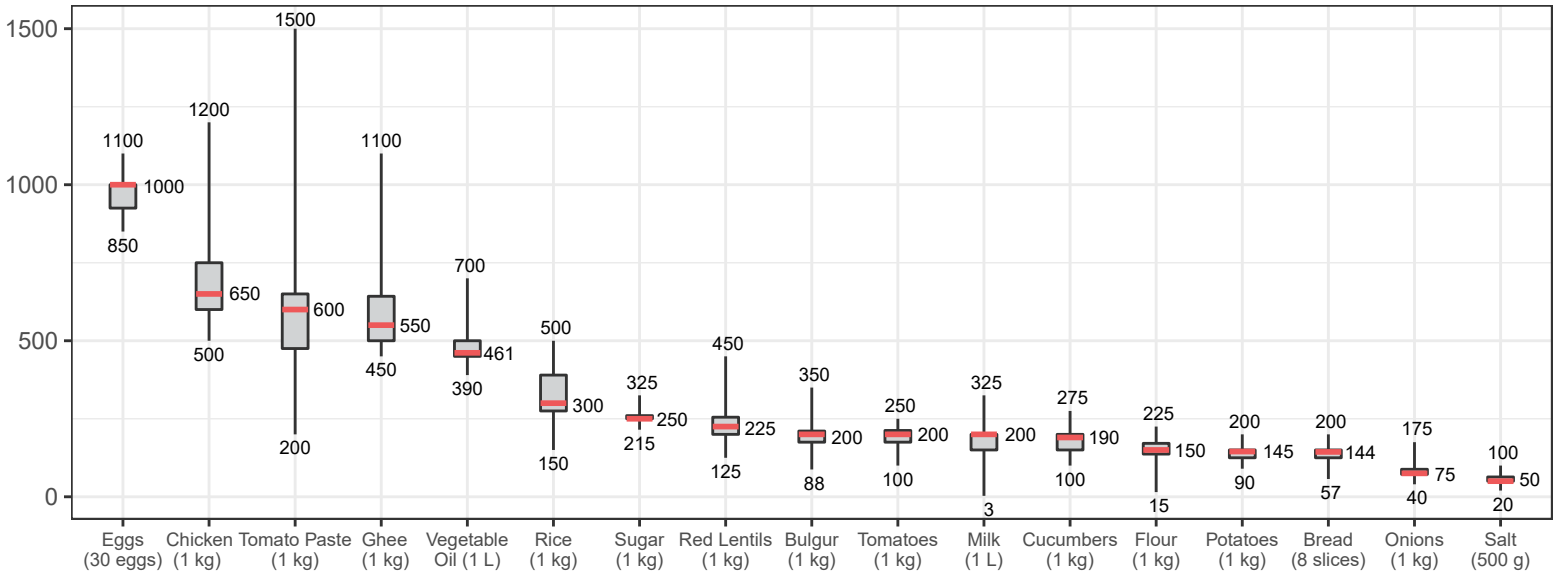
WINTER BLANKETS

Sub-districts & Communities, Syrian Pounds



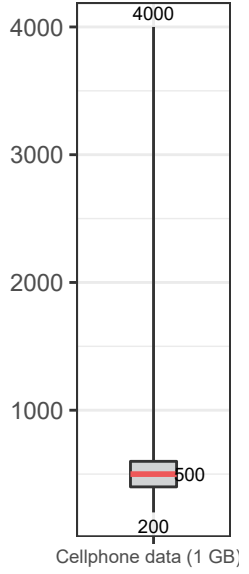
ASSESSED FOOD ITEMS

Syrian Pounds



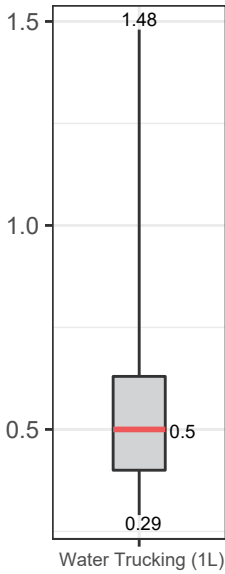
CELLPHONE DATA

1GB



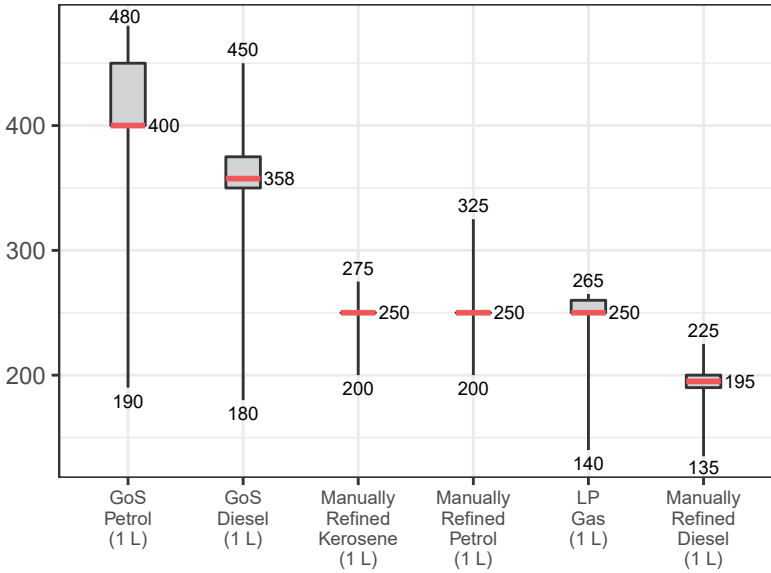
WATER TRUCKING

Syrian Pounds



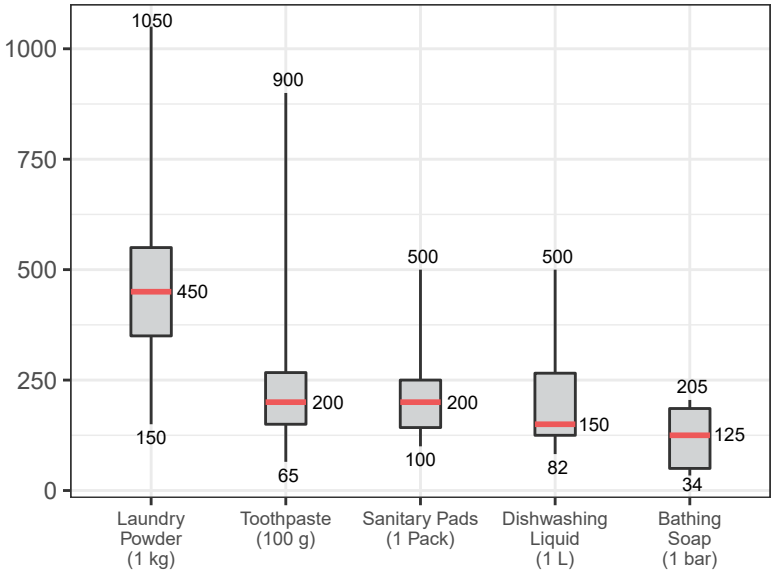
ASSESSED FUEL ITEMS

Syrian Pounds

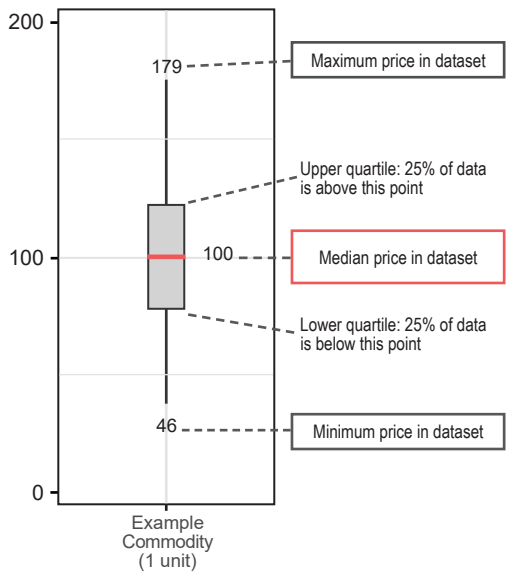


ASSESSED HYGIENE ITEMS

Syrian Pounds



READING BOXPLOTS



METHODOLOGY

To be included in the Syria Market Monitoring Exercise, markets must be permanent in nature, large enough to support at least two wholesalers, and diverse enough to provide a sufficient variety of goods and commodities. The shops surveyed within each market must be housed in permanent structures and must sell certain items to be eligible for inclusion.

Participating organisations train their enumerators on the Market Monitoring methodology and data collection tools using standard training materials developed by REACH. Each enumerator aims to assess three to five shops of each type in the main market in their assigned sub-district, using surveys to collect information about prices, current product inventory and the time needed to replace current stocks. In sub-districts where direct

surveying by enumerators is not possible, such as Lattakia and Deir-ez-Zor, data collection is conducted remotely through key informants such as shop owners, suppliers and consumers.

A survey form is deployed on KoBo each month to capture price and stock information from different types of establishments, including grocery stores, fuel traders, currency exchange shops, water trucking services and mobile phone shops, among others. Nearly all participating partners submit their data to these KoBo forms, using the KoBoCollect Android app to upload data. A small number of partners, by prior permission, collect data using fully harmonised data collection tools deployed on other platforms, then

submit their raw data to REACH for standardisation, compilation and cleaning.

Following data collection, REACH compiles and cleans all partners' data, normalising prices and cross-checking outliers. The cleaned data is then analysed by SMEB costs, components of the SMEB, and by commodities. These trends are observed at the sub-district-level and, when possible, at the community-level. Prices are divided into quartiles and boxplots are created to help CBR-TWG members understand the distribution of prices. To illustrate local variations in prices and availability, REACH uses the collected data to map the price of an SMEB in each sub-district and adds illustrations of surrounding border crossings, with data sourced from OCHA. In addition,

each SMEB component costs and transport fuel prices are graphed to visualize trends over time. The cleaned data sets are available on the REACH Resource Centre and are distributed to all participating partners, as well as to interested clusters and the broader humanitarian community.

Winterisation items have been added to the market monitoring exercise and data collection will continue for these items over winter, until February 2019. Whilst other commodities are bought regularly by families, winterisation items are not expected to be bought regularly and may be one off purchases for each family member.

CHALLENGES AND LIMITATIONS

As the Syria Market Monitoring Exercise currently includes 14 partners based in 2 hubs, achieving a consistent approach is inherently challenging. Participating organisations are therefore requested to adopt harmonised data collection methodologies and tools to ensure that the data uploaded is as accurate as possible.

Confirming commodity shortages in certain communities was difficult due to a lack of information about general market availability. When follow-ups were unable to confirm these shortages, this is stated in the text.

Because this exercise collects data directly from vendors and because it relies on partner organizations for its wide coverage, the exercise may lose coverage sporadically or for longer periods of time owing to challenges in accessing locations or due to loss in the shared data collection capacity of the project. This impacts the ability to report on trends, as can be seen in the line graphs and 'NA' values in the tables.

CHANGES TO COVERAGE

Given security and access constraints in the south of Syria, data collection has been unable to take place since July 2018. Due to access issues and an escalation of conflict, coverage was lost in Eastern Ghouta in March 2018.

CALCULATING 'MEDIAN CHEAPEST PRICE'

This figure is calculated by taking the median of the minimum-reported prices of a region's sub-districts. In turn, the minimum-reported prices for each sub-district were taken from the median of the minimum-reported prices of the constituent towns assessed.

CALCULATING SURVIVAL MINIMUM EXPENDITURE BASKET (SMEB) COSTS

The cost of a SMEB is calculated for each assessed sub-districts by calculating the median cheapest price of each SMEB commodity in that sub-district, then multiplying these medians by the number of units that an average Syrian household requires to purchase in a month. The composition of the SMEB can be found on page 1 and SMEB vegetables includes potatoes, tomatoes, onions and cucumbers.

WHAT IS THE CASH-BASED RESPONSES TECHNICAL WORKING GROUP?

The Cash-Based Responses Technical Working Group (CBR-TWG) was established in May 2014 to analyse the impact of the ongoing conflict on markets in Syria and guide the implementation of humanitarian cash and voucher programmes within those markets. REACH and the CBR-TWG have been partners on the Syria Market Monitoring Exercise since early 2015. Since February 2017, the exercise expanded coverage into the south, bringing monthly market assessments to communities in Damascus, Rural Damascus, Dar'a and Quneitra governorates. However, we have since lost coverage in the south of Syria.

ABOUT REACH

REACH is a joint initiative of two international non-governmental organizations — ACTED and IMPACT Initiatives — and the UN Operational Satellite Applications Programme (UNOSAT). REACH facilitates the development of information tools and products that enhance the capacity of aid actors to make evidence-based decisions in emergency, recovery and development contexts. By doing so, REACH contributes to ensuring that communities affected by emergencies receive the support they need. All REACH activities are conducted in support to and within the framework of inter-agency aid coordination mechanisms. For more information, please visit our website at www.reach-initiative.org, contact us directly at geneva@reach-initiative.org or follow us on Twitter at [@REACH_info](https://twitter.com/REACH_info).