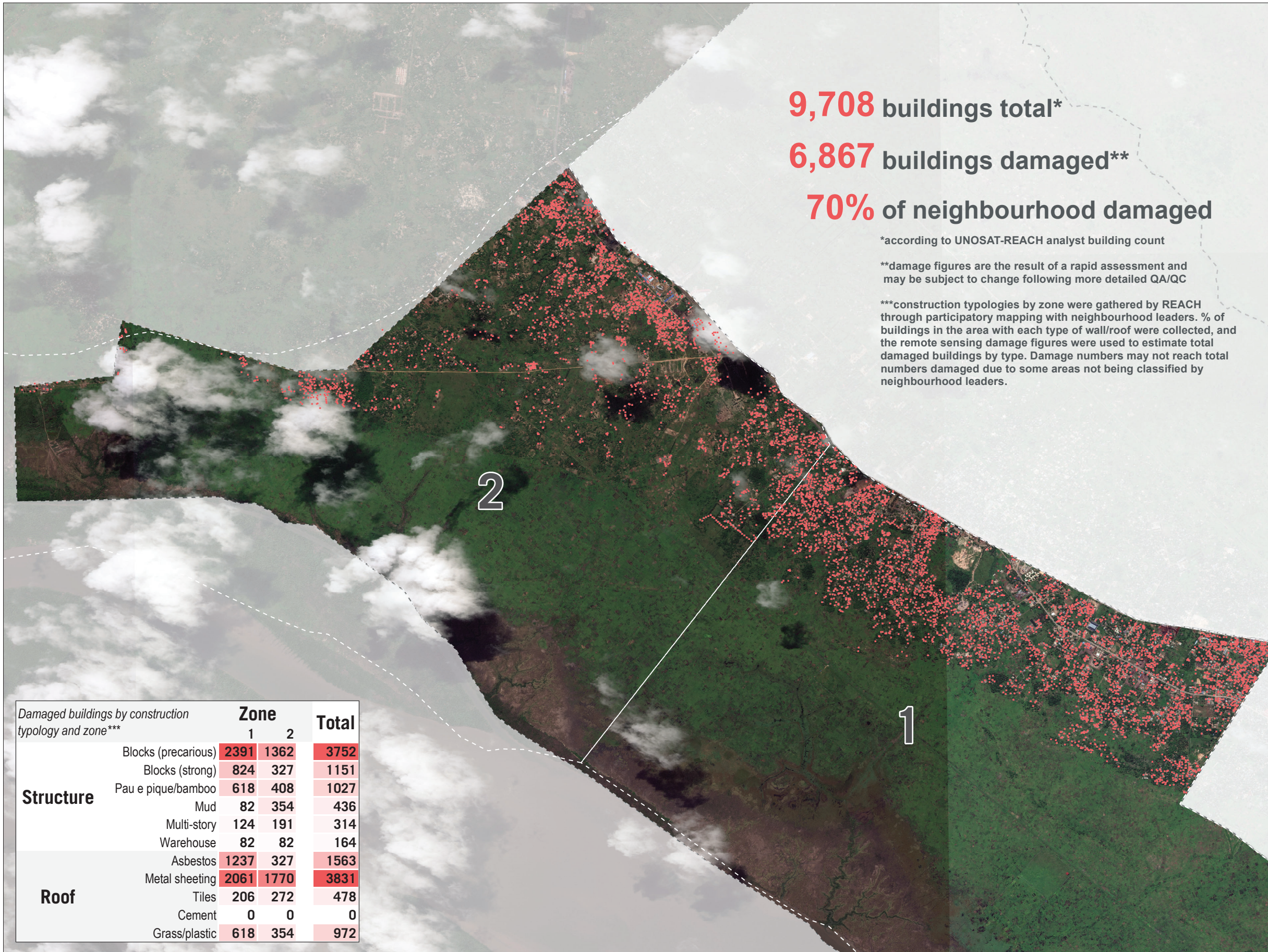


MOZAMBIQUE - Beira City

Inhamizua - Structural Damage by Construction Typology - As of 26 March



9,708 buildings total*

6,867 buildings damaged**

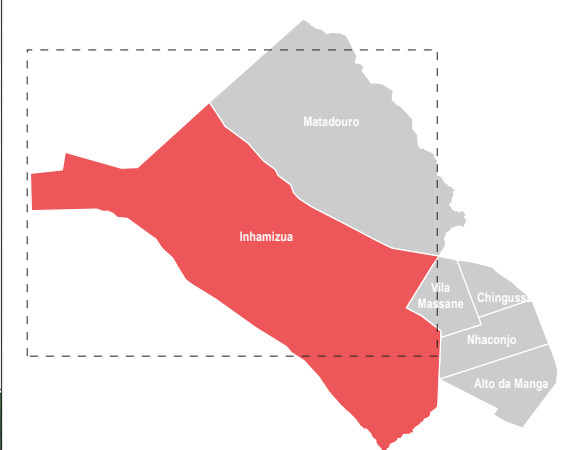
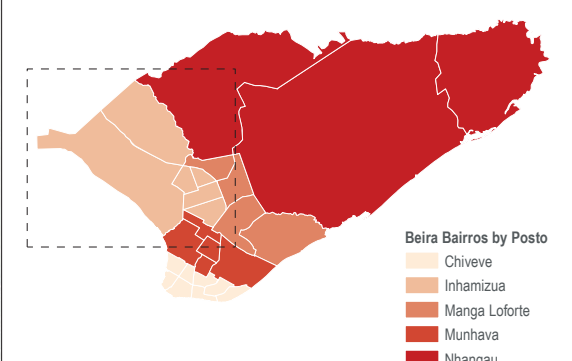
70% of neighbourhood damaged

*according to UNOSAT-REACH analyst building count

**damage figures are the result of a rapid assessment and may be subject to change following more detailed QA/QC

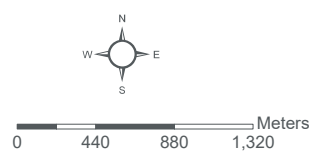
***construction typologies by zone were gathered by REACH through participatory mapping with neighbourhood leaders. % of buildings in the area with each type of wall/roof were collected, and the remote sensing damage figures were used to estimate total damaged buildings by type. Damage numbers may not reach total numbers damaged due to some areas not being classified by neighbourhood leaders.

Damaged buildings by construction typology and zone***	Zone		Total
	1	2	
Structure			
Blocks (precarious)	2391	1362	3752
Blocks (strong)	824	327	1151
Pau e pique/bamboo	618	408	1027
Mud	82	354	436
Multi-story	124	191	314
Warehouse	82	82	164
Roof			
Asbestos	1237	327	1563
Metal sheeting	2061	1770	3831
Tiles	206	272	478
Cement	0	0	0
Grass/plastic	618	354	972



Legend

- Damaged Buildings
- Bairros



Coordinate System: GCS WGS 1984
File: MOZ_Map_CycloneIdai_Beira_DamageByType_Inhamizua_30APR2019
Contact: reach.mapping@impact-initiatives.org

Note: Data, designations and boundaries contained on this map are not warranted to be error-free and do not imply acceptance by the REACH partners, associates, donors mentioned on this map.



Funded by
European Union
Civil Protection and
Humanitarian Aid