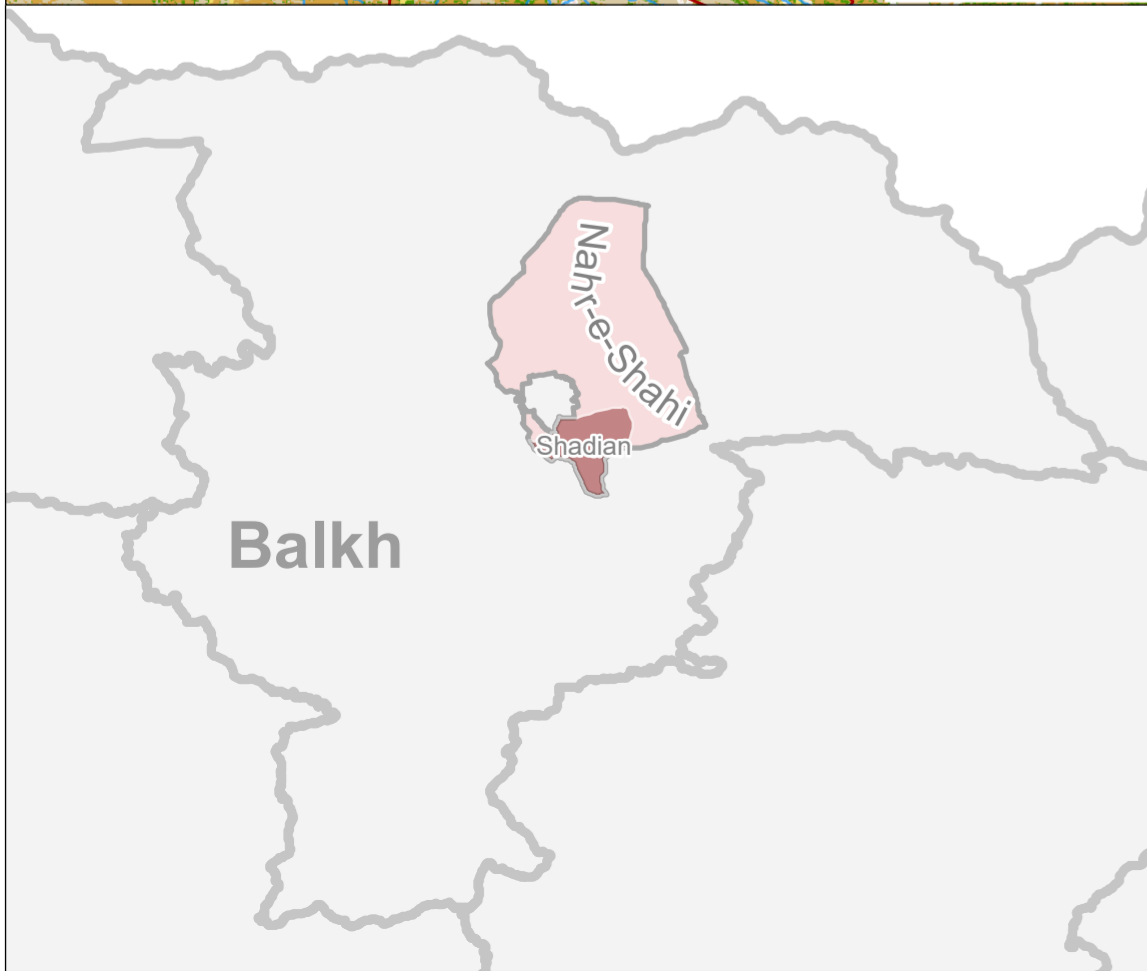
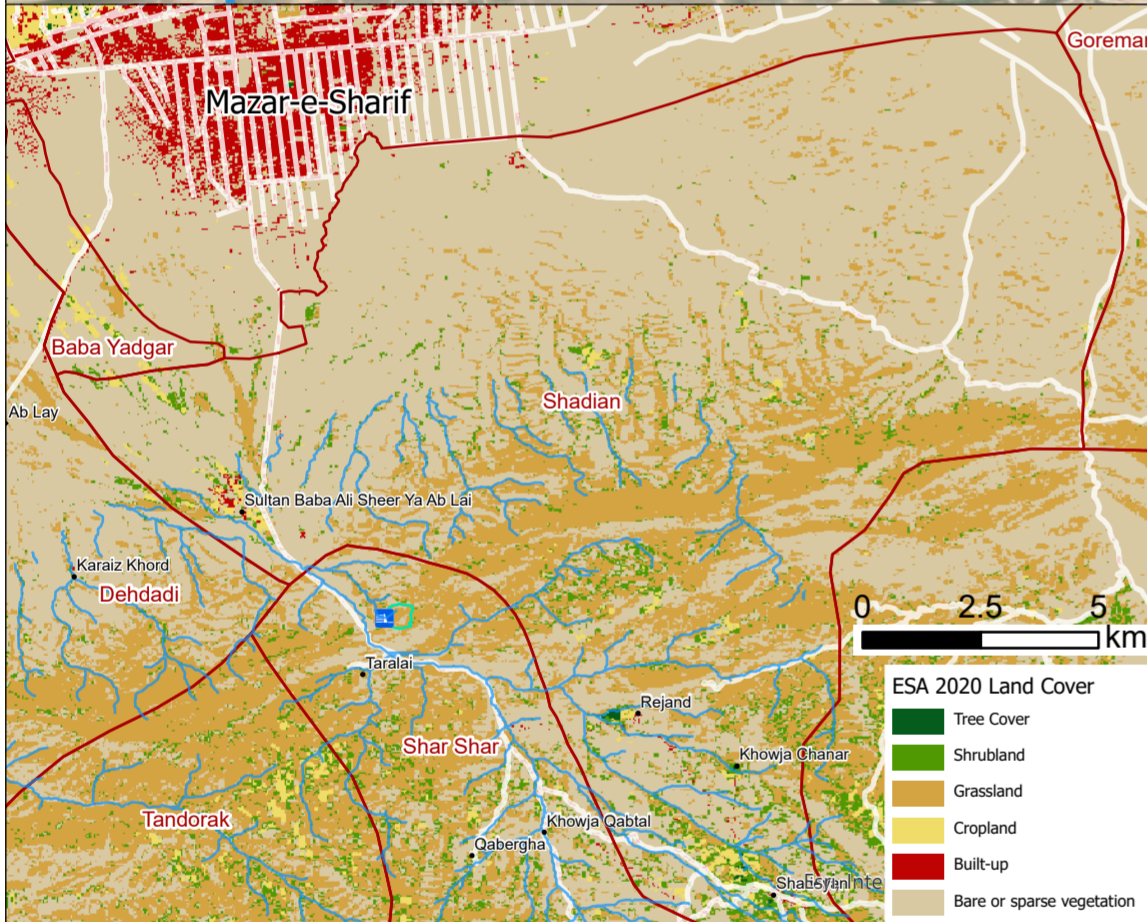


Sultan Baba
 Ali Sheer
 Ya Ab Lai

The watershed
 area is 0.2 km²

Average annual precipitation
 within the watershed is 30 mm

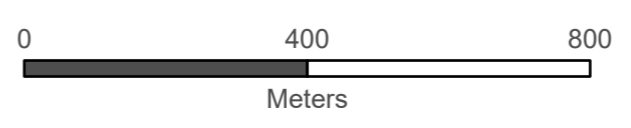
Distance from check dam to center
 of Mazar city is about 16 km



- Legend**
- Check dam
 - Road
 - Streambed
 - Watershed area

Data sources:
 Watershed area development based on 12.5m Alas Prism Digital Elevation Model using ArcGIS pro hydrology modelling tools.
 Precipitation annually averaged based on CHIRPS datasets from 1994 to 2023 using GoogleEarthEngine.
 Snow cover extent calculated based on Modis Normalized Snow Cover Index, 10-year averaged from 2004 to 2023 using GoogleEarthEngine.
 Coordinate System: WGS 1984

Note: Data, designations and boundaries contained on this map are not warranted to be error-free and do not imply acceptance by the AGORA partners, associated, donors mentioned on this map.



Implemented by

Shaping practices
 influencing policies
 impacting lives

Funded by