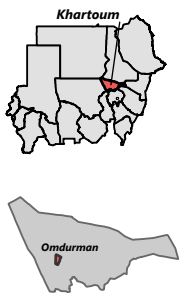
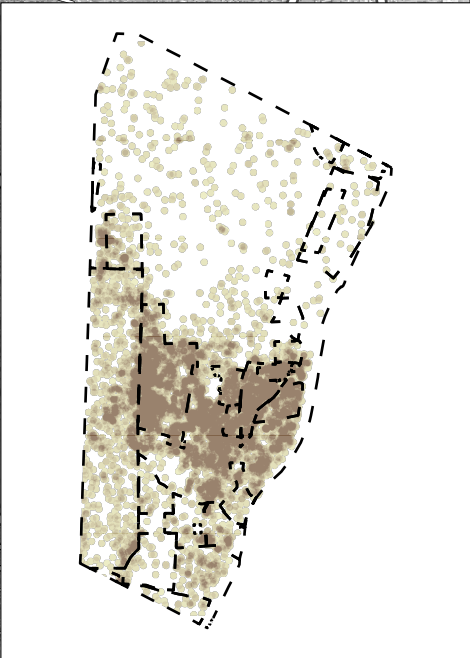
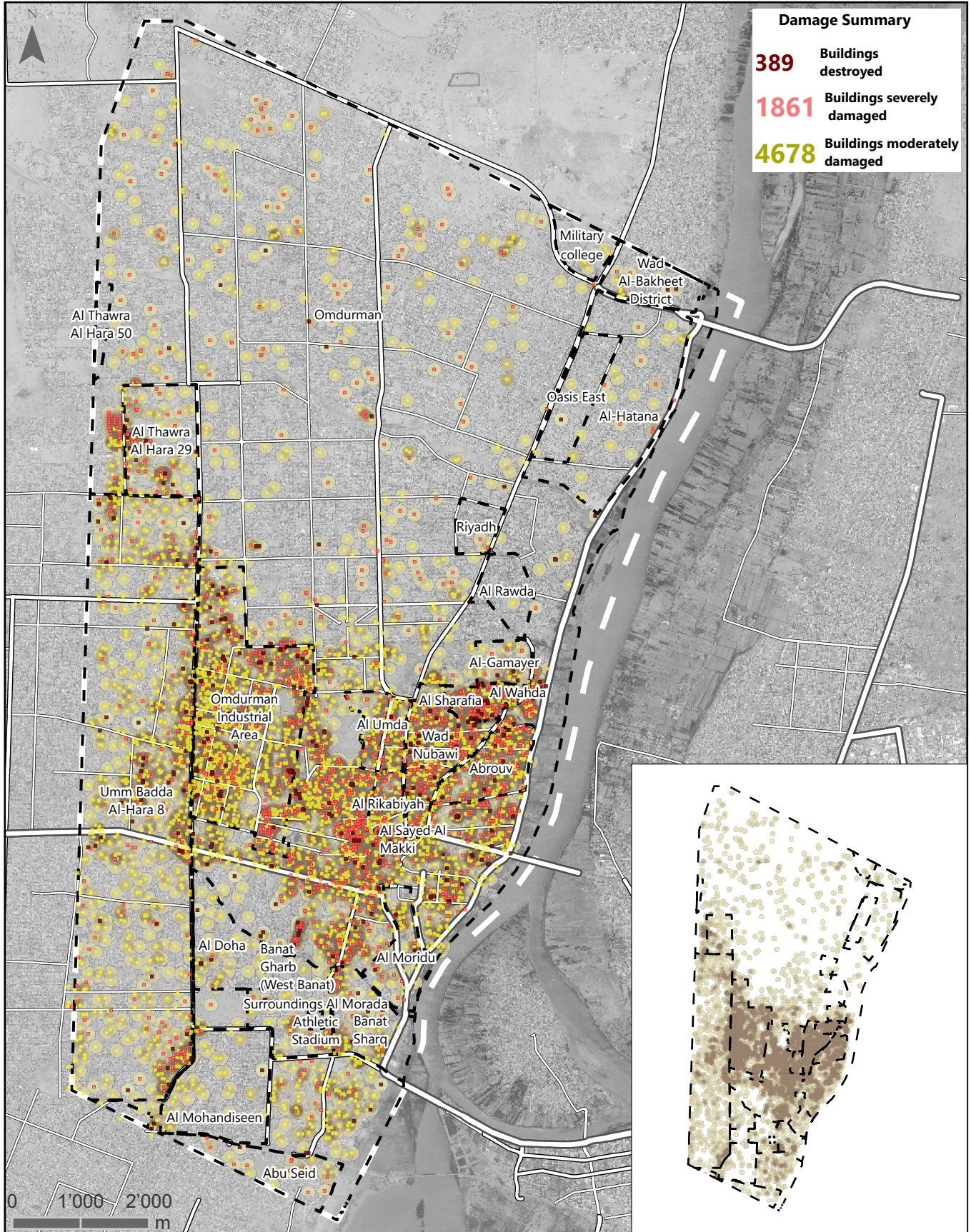


REPUBLIC OF SUDAN- Khartoum state

Omdurman Building Damage Assessment of May 01, 2024

For humanitarian purpose only
Production date May 16, 2024



- Building damage**
- Destroyed
 - Severely damaged
 - Moderately damaged
- Road**
- Primary
 - Secondary
 - Tertiary
- Omdurman analysis extent (UNOSAT analysis Extend)**
- Neighborhood**
- Damage density**
- High
 - Low

Data sources:
Satellite data (1): WorldView-3; Resolution: 30 cm
Date: May 01, 2024
Copyright : ©2024 Maxar/DigitalGlobe
US Department of State, Humanitarian Information Unit, NextView License
Neighborhood : Wikimapia and Mapcarta
Roads - OpenStreetMap
Damage Analysis : UNOSAT
Coordinate System: GCS WGS 1984
Contact: reach.mapping@impact-initiatives.org

Note: Data, designations and boundaries contained on this map are not warranted to be error-free and do not imply acceptance by REACH partners, associates or donors mentioned on this map.

The neighborhoods limits and names are indicative and intended for contextualization purpose