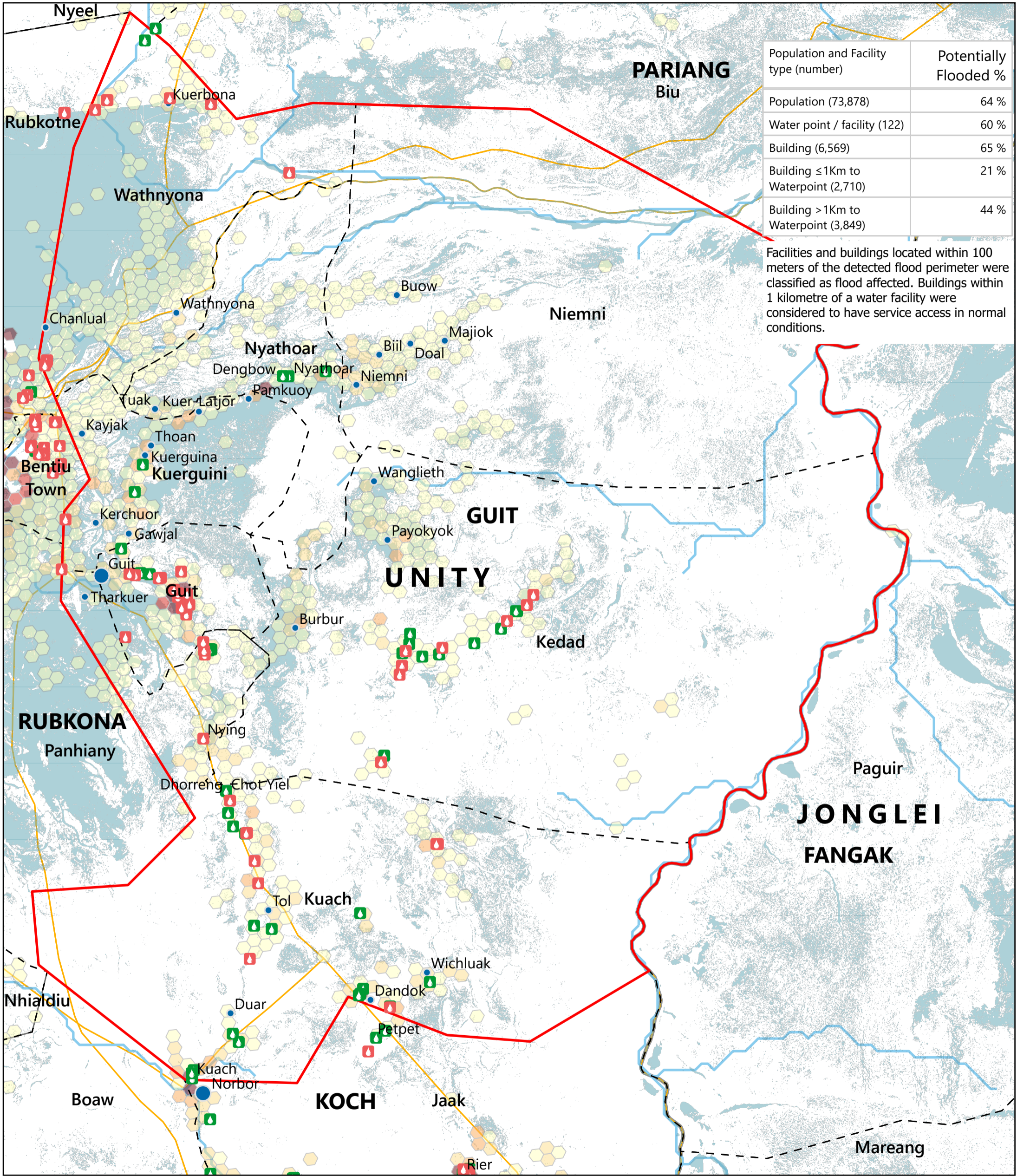


# SOUTH SUDAN - Guit County

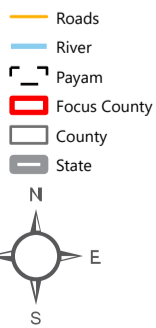
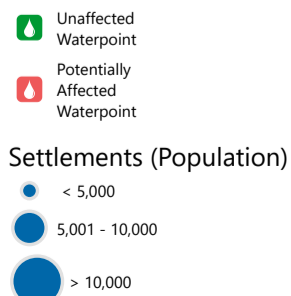
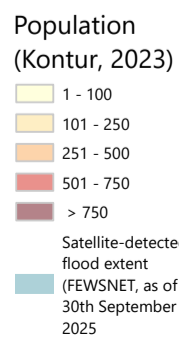
## Flood Impact Map: Water Facilities (October 2025)

For Humanitarian Purposes Only  
Production Date: 22 October 2025



Population and Facility type (number)	Potentially Flooded %
Population (73,878)	64 %
Water point / facility (122)	60 %
Building (6,569)	65 %
Building ≤1Km to Waterpoint (2,710)	21 %
Building >1Km to Waterpoint (3,849)	44 %

Facilities and buildings located within 100 meters of the detected flood perimeter were classified as flood affected. Buildings within 1 kilometre of a water facility were considered to have service access in normal conditions.



Data sources: Source: REACH, OCHA, UNMISS, IOM\_DTM, UNOSAT, FEWSNET, WHO, IOM, DTM, Global Google-Microsoft Open Buildings Dataset (2023)  
Coordinate System: Name: GCS WGS 1984  
File: REACH\_SSD\_Map\_Unity\_Guit\_Flood\_Impact\_Water\_22\_Oct\_2025  
Contact: reach.mapping@impact-initiatives.org

Note: Data, designations and boundaries contained on this map are not warranted to be error-free and do not imply acceptance by REACH partners, associates or donors mentioned on this map.

