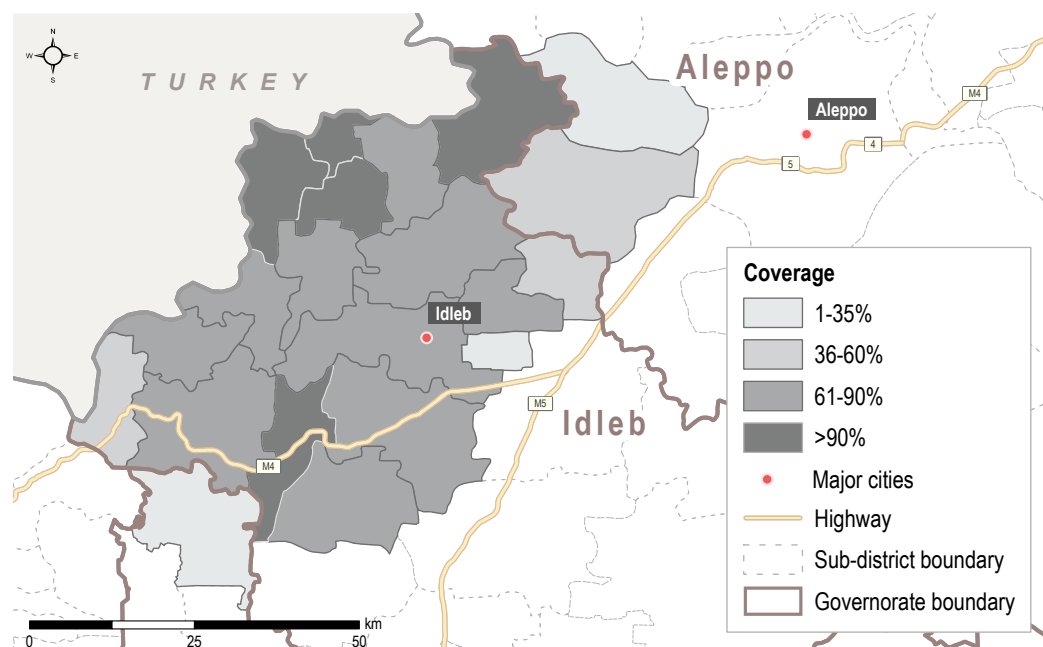


Introduction and Methodology

HSOS is a monthly assessment that provides comprehensive, multi-sectoral information about the humanitarian conditions and priority needs inside Syria. This factsheet presents a thematic review based on the HSOS assessment of the priority needs and humanitarian assistance, economic conditions, living conditions, access to basic services, COVID-19 situation, and security and protection situation in the greater Idleb area in Northwest Syria (NWS). **Sector-specific indicator findings by location can be found on the [HSOS dashboard](#).**

The assessment is conducted using a key informant (KI) methodology at the community level. REACH enumerators are based inside Syria and interview three to six KIs per assessed location, either directly or remotely (via phone). KIs are chosen based on their community-level and sector-specific knowledge. This factsheet presents information gathered in **357 communities** across the greater Idleb area¹. **Data was collected between 12-20 September 2021 from 1,238 KIs (16% female).** Unless specified by an endnote, all indicators refer to the situation in the 30 days prior to data collection. Findings are indicative rather than representative, and should not be generalized across the population and region. Findings that are calculated based on a subset of the community are indicated by the following footnote ♦, with each subset specified in the endnotes.

The complete monthly HSOS dataset is available on the [REACH Resource Centre](#).



Key Highlights

Ongoing hostilities produced new waves of displacement, resulted in casualties among civilians and caused material damage, including to health facilities. The increase in COVID-19 cases was of deep concern for the population facing limited access to health services. Moreover, the impact of COVID-19 on livelihood sources could disrupt households' income and undermine their ability to purchase essentials, whose prices keep increasing. Food was the most commonly reported first priority need for all population groups.

- **Military activities along the frontlines in southern Idleb impacted civilians' lives and their access to basic services.** Airstrikes and shelling resulted in at least nine civilian casualties in September.^a As a result of the deteriorating security situation, around 20,000 persons were displaced to Northwest Syria (NWS).^b On 8 September, a medical centre was destroyed from shelling in Marayan, in the Jabal al-Zawiya area in southern Idleb.^c

- **As daily COVID-19 cases peaked in September and the health system struggled to respond to critical cases, fear of COVID-19 increased.** COVID-19 cases more than doubled from August to September.^d The occupancy rate of intensive care units reached 93% and functional oxygen stations were insufficient to meet oxygen needs.^e According to KIs, fear of COVID-19 was a concern for the population in 57% of the assessed communities in September. This represents a sharp increase compared to the summer months when this concern was reported in around one third of the assessed communities in greater Idleb.

- **COVID-19 mitigation measures are impacting livelihood sources.** In half of the assessed communities, KIs reported that COVID-19 affected at least one of the existing livelihood sources. In particular, COVID-19 reportedly affected the agricultural sector in 27% of the assessed communities. The closure of the border crossings with Turkey reportedly led to an increase in price and shortage of agricultural inputs for farmers.^e Impairments to the functioning of the agricultural sector is of particular concern, considering that in Northwest Syria, the highest proportion of in-work females (37%) and males (20%) are employed in this sector.^f

- **Households' purchasing power keeps decreasing due to rising prices.** According to the REACH Market Monitoring exercise, the Survival Minimum Expenditure Basket (SMEB) value in Idleb Governorate has consistently been highest in Northern Syria. In September, it totalled SYP 465,996 (or USD 135) – a 20% increase compared to the previous month. In particular, the value of the food component of the SMEB increased by 23% from August to September.^g Food unaffordability, reported in 83% of assessed communities, represented the primary obstacle to securing sufficient food. In addition, KIs indicated food as the top priority need for internally displaced persons (IDPs) in 42% of the assessed communities, and 29% for residents.

HSOS Dashboard

For a breakdown of sector-specific indicators by location, please see the [HSOS dashboard](#). The interactive HSOS dashboard provides a monthly sectoral overview of key indicators disaggregated at the sub-district and community level.



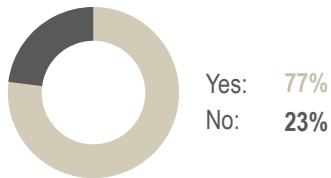
Priority Needs and Humanitarian Assistance



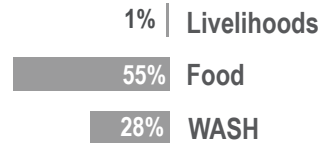
Most commonly reported **first, second, and third** and **overall** priority needs for residents (by % of assessed communities) ^{2,3}

	FIRST	SECOND	THIRD	OVERALL	
1	Food	WASH [▲]	Livelihoods	Livelihoods	67%
2	Livelihoods	Food	NFIs	Food	60%
3	Healthcare	NFIs [▼]	WASH	WASH	49%

% of assessed communities where some of the resident households were able to access humanitarian assistance



% of assessed communities where KIs reported the presence of the following **types of assistance for residents** ⁴



Most commonly reported barriers that resident households faced in accessing humanitarian assistance (by % of assessed communities) ^{4,♦}

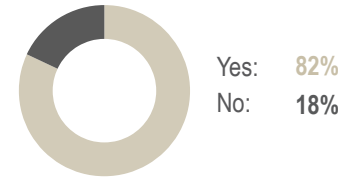
Communities reporting access to humanitarian assistance	Communities reporting no access to humanitarian assistance
Assistance provided was insufficient to cover all people in need 64% 1	96% No humanitarian assistance was available
Assistance provided was not relevant to all needs 55% 2	2% People did not comply with the eligibility criteria
Quantity of assistance provided to households was insufficient 43% 3	1% Perceived discrimination in provision of humanitarian assistance



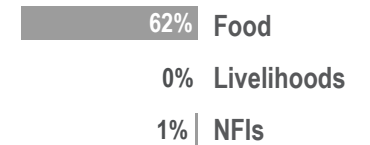
Most commonly reported **first, second, and third** and **overall** priority needs for IDPs (by % of assessed communities) ^{2,3}

	FIRST	SECOND	THIRD	OVERALL	
1	Food	NFIs	Livelihoods	Food	64%
2	Shelter	Livelihoods	NFIs	Livelihoods	58%
3	Livelihoods	WASH	WASH	NFIs	52%

% of assessed communities where some of the IDP households were able to access humanitarian assistance



% of assessed communities where KIs reported the presence of the following **types of assistance for IDPs** ⁴



Most commonly reported barriers that IDP households faced in accessing humanitarian assistance (by % of assessed communities) ^{4,♦}

Communities reporting access to humanitarian assistance	Communities reporting no access to humanitarian assistance
Assistance provided was insufficient to cover all people in need 65% 1	100% No humanitarian assistance was available
Assistance provided was not relevant to all needs 56% 2	0% Not aware if assistance was available
Quantity of assistance provided to households was insufficient 45% 3	0% Distribution points were too far or the routes were inaccessible

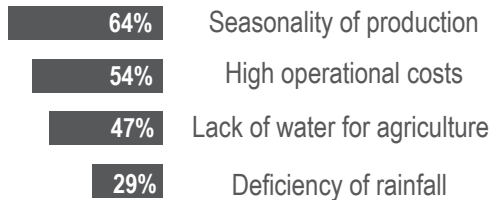


Economic Conditions

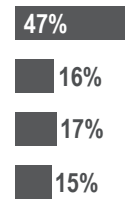
	Estimated median monthly household expense for water for a household of six ^{5,6}			Estimated median monthly rent price for a two bedroom apartment ^{5,6}			Estimated median daily wage for unskilled labour ^{5,7,8}		
Greater Idlib area	22,727 SYP			61,982 SYP			7,438 SYP		
% of communities where indicator was reported in following currencies *	SYP	TRY [▼]	USD	SYP	TRY	USD	SYP	TRY	USD
	2%	98%	0%	2%	70%	28%	2%	98%	0%

Most commonly reported barriers to accessing livelihoods related to agriculture (by % of assessed communities) ⁴

Residents



IDPs



% of assessed communities where common livelihood sources from agriculture were reported ⁴

Livelihood source	Residents	IDPs
Food crop production	68%	13%
Cash crop production	56%	2%
Livestock products	62%	55%
Sale of livestock	7%	29%

86% and 95%

% of assessed communities where KIs reported daily waged labour as a common source of income for residents and IDPs

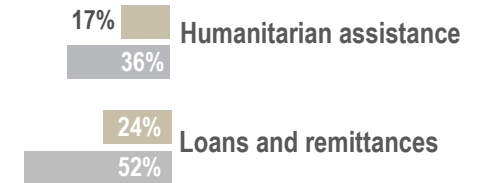
60 days

Number of days the average day labourer would need to work to earn the monthly cost of basic SMEB[▲] items ^{5,9}

94% and 48%

% of assessed communities where KIs reported the insufficient income of households and general lack of employment opportunities as barriers to meeting basic needs ⁸

% of assessed communities where KIs reported the presence of residents and IDP households relying on non-productive sources of livelihoods to meet their basic needs ⁴



Intersectoral findings on unaffordability hindering access to goods and services



KIs in 65% of assessed communities cited that rent prices were unaffordable for the majority of people



KIs in 58% of assessed communities cited the high cost of fuel for generators as a common challenge



KIs in 84% of assessed communities cited the high cost of solar panels as a common challenge



KIs in 51% of assessed communities cited the high cost of water trucking as a common challenge



KIs in 83% of assessed communities cited the high cost of food as a common challenge ⁸



KIs in 41% of assessed communities cited the high cost of health services as a common challenge



Living Conditions

In 92% of assessed communities reportedly at least 80% of the resident population owned their shelter

In 64% of assessed communities reportedly none of the IDP households owned their shelter

In 19% of assessed communities at least one fifth of the IDP population reportedly lived in unfinished or abandoned residential buildings

In 27% of assessed communities at least one fifth of the IDP population reportedly lived in tents



A lack of toilets was reported as a shelter issue for IDPs in 15% of assessed communities



A lack of bathing facilities was reported as a shelter issue for IDPs in 9% of assessed communities



Problems with the drinking water were reported in 37% of assessed communities



Water being calcareous was the most commonly reported problem with drinking water (reported by KIs in 37% of assessed communities)

Reported sanitation issues affecting public space in the community (by % of assessed communities) ⁴

Rodents and/or pests are frequently visible

10%

Solid waste in the streets

18%

Sewage system pollutes public areas

5%

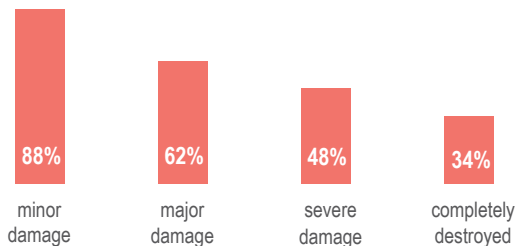
Stagnant water

9%

Flooding in the streets

3%

Reported presence of occupied shelters with damage across communities where damages were reported (by % of assessed communities) ^{5,10}



Shelter and repair materials being too expensive was the most commonly reported challenge for households to repair their shelter (reported by KIs in 75% of assessed communities) ⁴



93% % of assessed communities where KIs reported that households experienced barriers to accessing sufficient food ⁸



In 17% of these communities, KIs reported that the unavailability of certain food items was a challenge to accessing sufficient food ⁸

Most commonly reported coping strategies for a lack of food (by % of assessed communities) ⁴

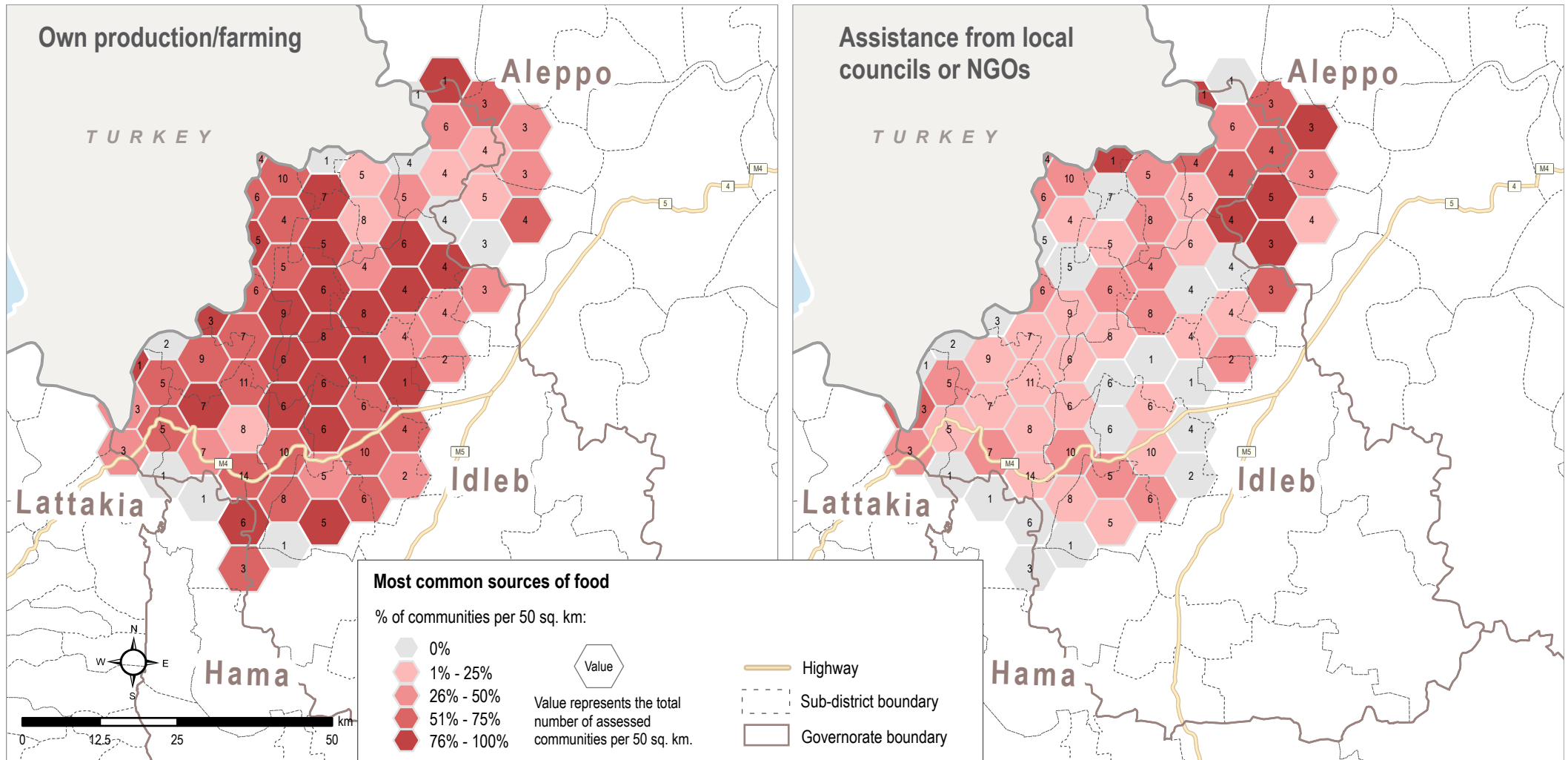
- 1 Borrowing money to buy food 70%
- 2 Relying on less preferred food / lower food quality 69%
- 3 Buying food with money usually used for other things 65%



High price of suitable foods formula was the most commonly reported challenge to feeding young children (reported by KIs in 87% of assessed communities) ^{4,11}

Commonly reported sources of food for households other than markets (by % of assessed communities) ⁴

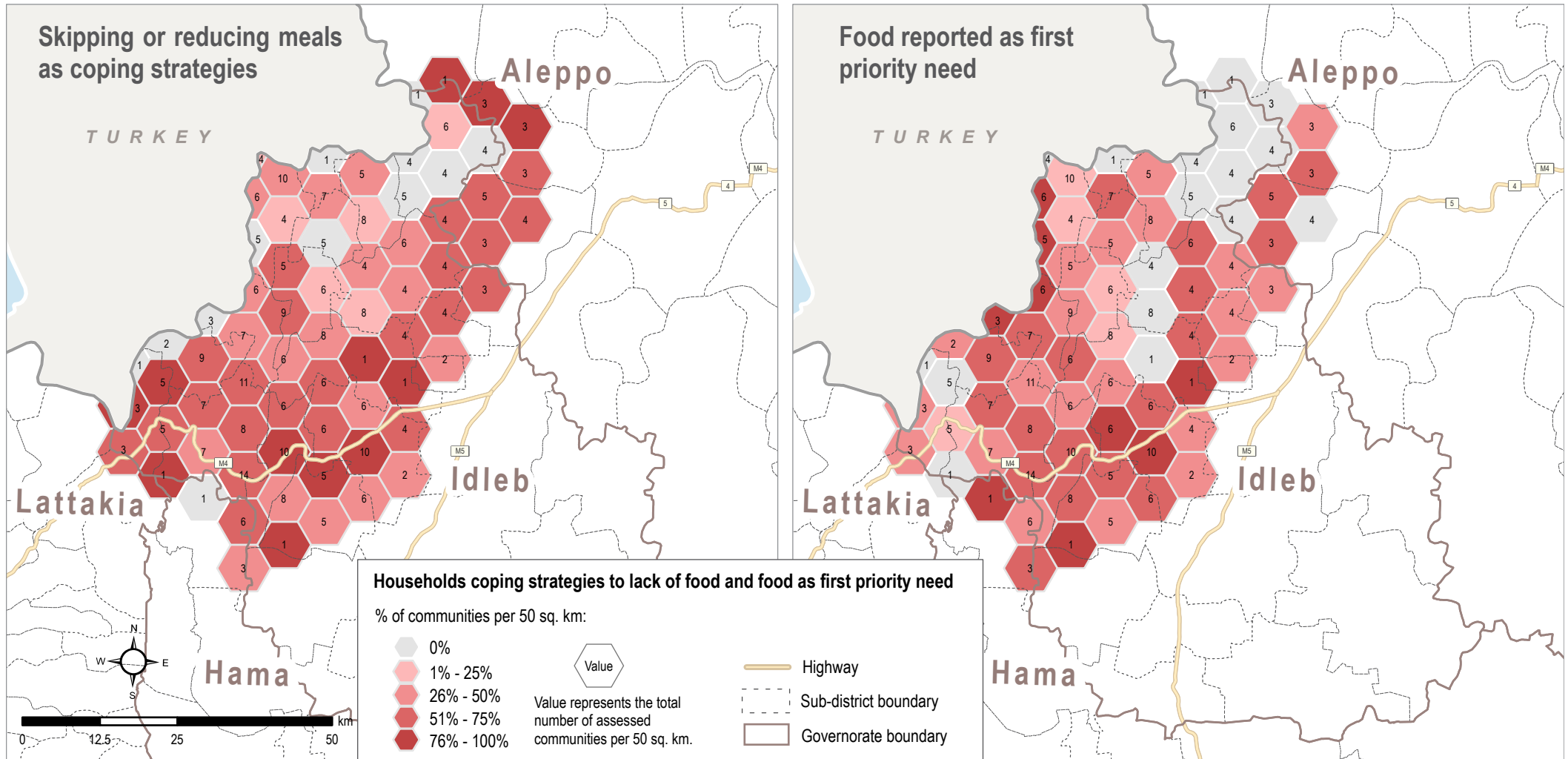
- 1 Own production or farming 62%
- 2 Assistance from local council or NGOs 28%
- 3 Relying on food stored previously 19%



Most Commonly Reported Sources of Food other than Markets

Note on the map

These maps show the percentage of assessed communities indicating own production/farming or assistance from local councils/NGOs as one of the common sources of food for households in the last 30 days. In Armanaz, Harim, Maaret Tamsrin, Mhambal, Ziyara and Idleb Sub-districts, own production/farming was reported in more than 80% of the communities.



Food Insecurity: Reducing Frequency and Amount of Meals and High Priority of Food Needs

Note on the map

These maps show the percentage of assessed communities where KIs indicated that households have skipped meals and/or reduced meal size to cope with the lack of food over the last 30 days, and where food was reported as the first priority need for the resident and/or the IDP population.



Access to Basic Services



Access to Electricity

7-8 hrs per day

was the most commonly reported range for hours of electricity accessible to households (reported by KIs in 44% of assessed communities)

Solar panels

was the most commonly reported main source of electricity (reported by KIs in 65% of assessed communities)

49%

% of assessed communities where KIs reported the main network is partially or completely not functioning as a barrier for electricity access [†]



Access to Water

56%

% of assessed communities where KIs reported that not all households had access to sufficient water



7 days	0%
5-6 days	1%
3-4 days	11%
1-2 days	40%
0 days	48%

Days per week where water from the network was available (by % of 294 communities connected to a water network) [†]

Private water trucking

was the most commonly reported source of drinking water (reported by KIs in 46% of assessed communities)

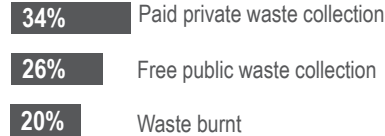


Access to Sanitation

34%

% of assessed communities where KIs reported that no sewage system was present

Most commonly reported ways people disposed of solid waste (by % of assessed communities)



40%

% of assessed communities where KIs reported waste removal services as a WASH priority need ⁸



Access to Markets

19%

% of assessed communities in which households reportedly were unable to access markets in the assessed location

Not enough consumers to support markets in the assessed location

was the most commonly reported reason for why markets were not functioning (reported by KIs in 60% of assessed communities where households were unable to access markets in their own location)

63%

% of assessed communities where KIs reported that the lack of transportation to markets was a barrier to physically accessing food markets

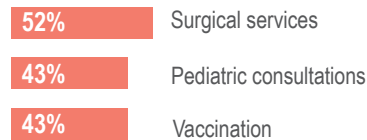


Access to Health Services

41%

% of assessed communities where KIs reported that the households did not have access to health services in the assessed location

Most commonly reported health priority needs (by % of assessed communities) ⁸



Going to the pharmacy instead of a clinic

was the most commonly reported coping strategy for a lack of healthcare (reported by KIs in 87% of assessed communities)



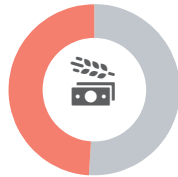
Access to Education Services

Due to summer holidays, no information on education was collected. Information on access to education services will be displayed again in October.



COVID-19

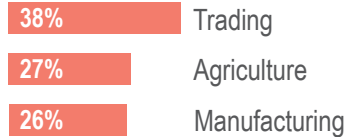
Effects of COVID-19 on livelihoods sectors in the community (by % of assessed communities)



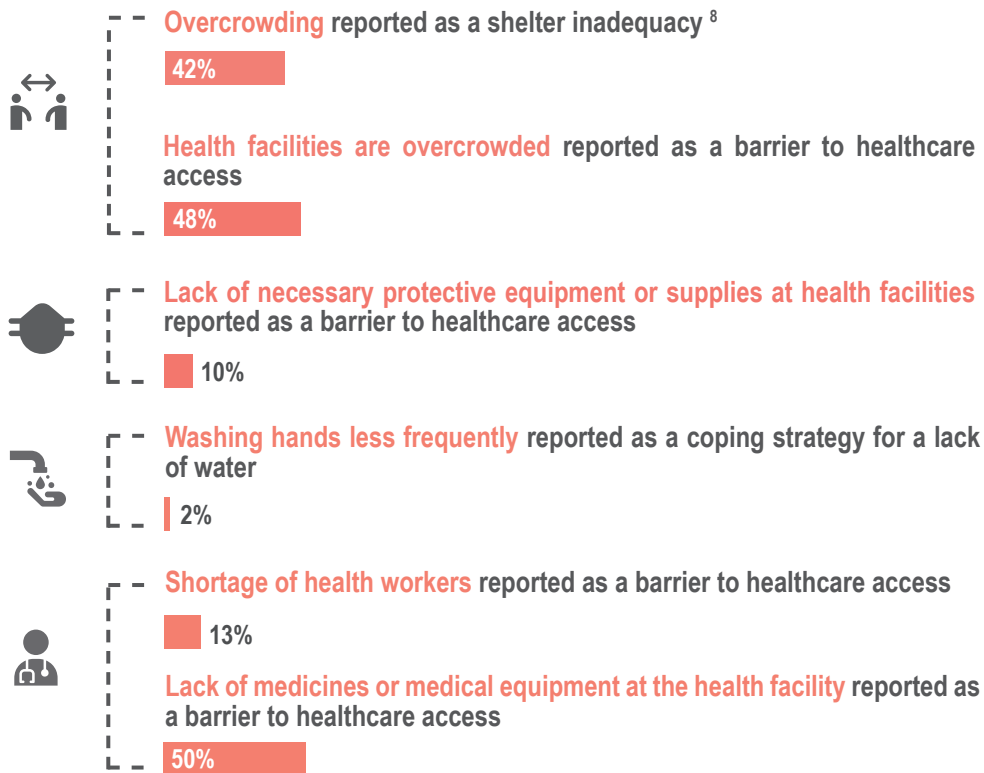
None of the available livelihood sectors were affected 51%

At least one of the available livelihood sectors was partially or totally affected 49%

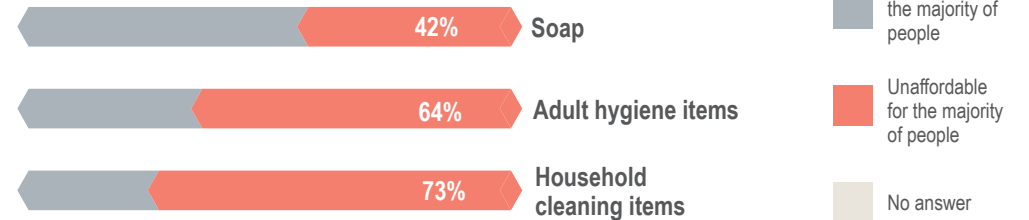
Most commonly reported sectors affected by COVID-19 (by % of assessed communities)



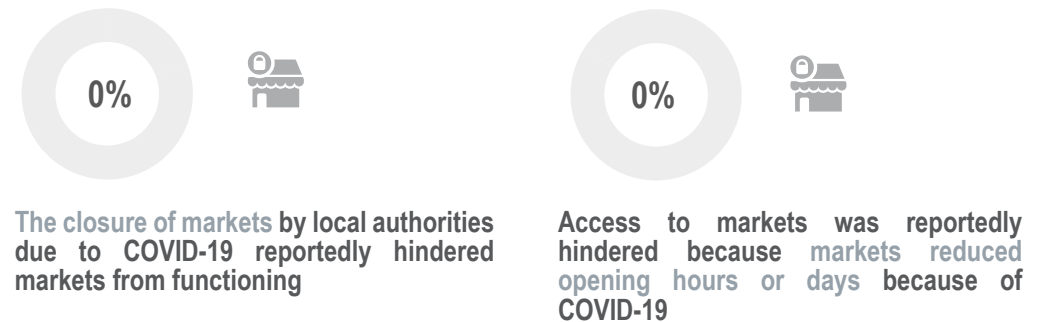
% of assessed communities where COVID-19 risk indicators were reported by KIs

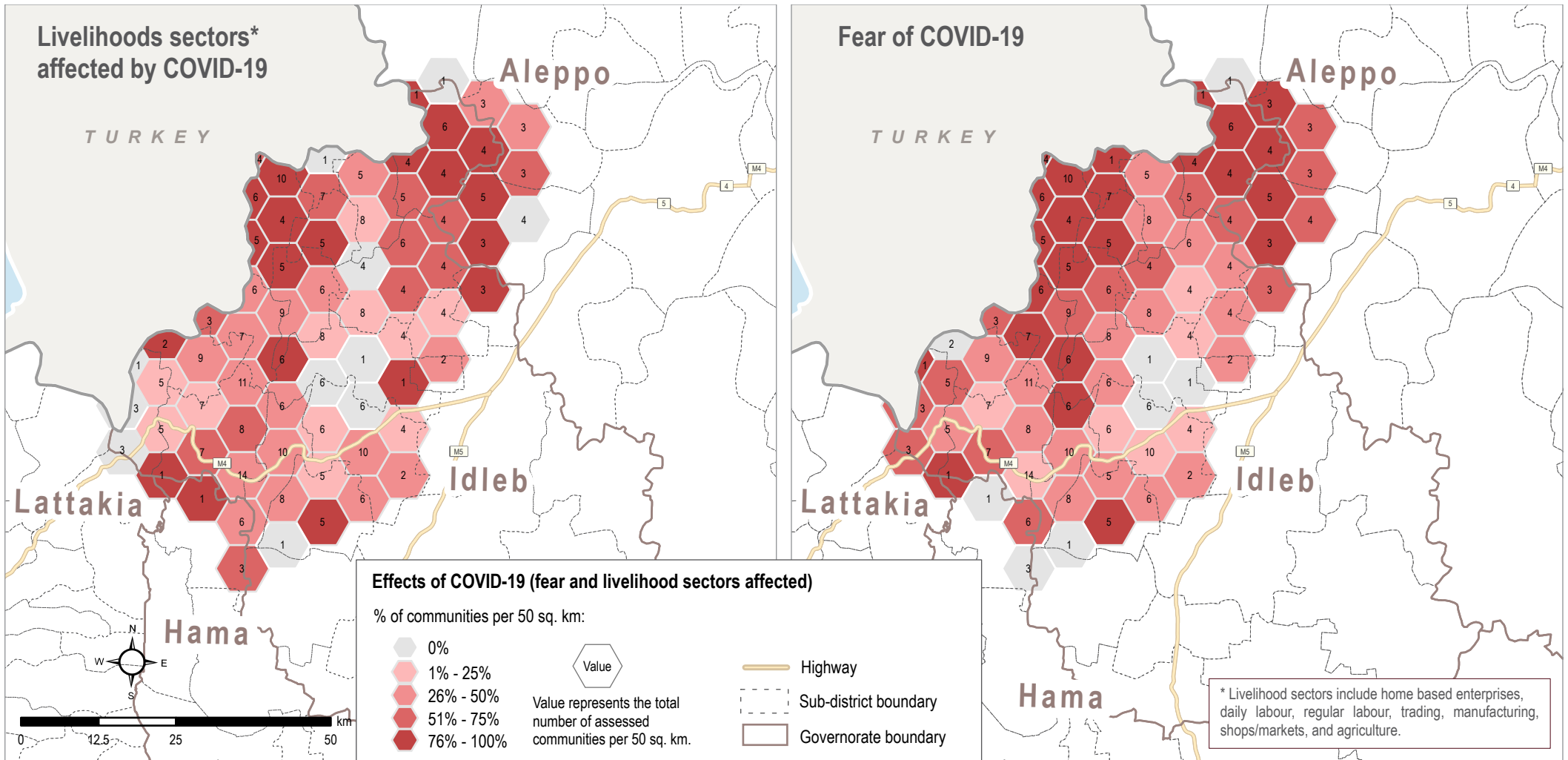


Reported hygiene item availability and affordability (by % of assessed communities) ¹²



% of assessed communities where COVID-19 related barriers to access services were reported





COVID-19 Affecting Livelihoods and Representing a Concern for the Population

Note on the map

These maps show the percentage of assessed communities where at least one of the available livelihood sectors was reportedly affected by COVID-19, and where fear of COVID-19 was reported as a protection concern for the resident population and/or the IDP population. In Tefnaz, Dana and Salqin Sub-districts, more than 80% of the assessed communities reportedly experienced the effects of COVID-19 on livelihoods.



Security and Protection

Intersectoral findings on security



General safety and security concerns restricting movement to markets was a reported barrier to market access in **8%** of assessed communities

General safety and security concerns at markets was a reported barrier to market access in **22%** of assessed communities

Markets not opening because of security issues was a reported barrier to markets not functioning in **4%** of assessed communities



Threat from airstrikes was reported as a protection risk in **118 communities**⁸

Threat from shelling, sniper or gunfire was reported as a protection risk in **108 communities**⁸

Threat from improvised explosive devices (IEDs), mines or unexploded ordnances was reported as a protection risk in **38 communities**⁸

Fear from imminent conflict was reported as a protection risk in **56 communities**⁸



The inability to lock homes securely was reported as a shelter inadequacy in **40%** of assessed communities⁸

Lack of lighting around the shelter was reported as a shelter inadequacy in **83%** of assessed communities⁸

The security situation was reported as a barrier to shelter repairs in **20%** of assessed communities



General safety and security concerns at the health facility was reported as a barrier to healthcare in **12%** of assessed communities

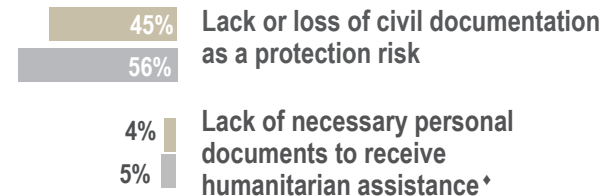
Most commonly reported protection priority needs

(by % of assessed communities)^{3, 8}

- 1 **82%** Special assistance for vulnerable groups
- 2 **52%** Specialised child protection services
- 3 **36%** Psychosocial support



% of assessed communities where the lack of civil documentation for residents and IDPs was reported



% of assessed communities where extreme coping strategies used by residents and IDPs to meet basic needs were reported⁴

Residents

- 37%** Early marriage
- 1%** Forced marriage
- 8%** High risk work
- 0%** Sending family members to beg
- 72%** Sending children (15 or below) to work

IDPs

- 38%** Early marriage
- 0%** Forced marriage
- 8%** High risk work
- 2%** Sending family members to beg
- 80%** Sending children (15 or below) to work

Age, Gender, and Diversity

KIs in **41%** of assessed communities reported a **lack of employment opportunities for women** as a barrier to meeting basic needs⁸

KIs in **47%** of assessed communities reported a **lack of employment opportunities for persons with a disability** as a barrier to meeting basic needs⁸

KIs in **19%** of assessed communities reported a **lack of privacy for women and girls at health facilities** as a barrier to healthcare access

KIs in **42%** of assessed communities reported a **lack of market access for people with restricted mobility**

KIs in **4%** of assessed communities reported that **women and girls feel unsafe when traveling to markets**

Children below the age of 12 were reported as a group affected by child labour in **15%** of assessed communities⁸

Hazardous child labour was reported as a protection risk in **9%** of assessed communities⁸

Endnotes

1. The greater Idleb area includes Idlib governorate, parts of Aleppo western countryside, and parts of Hama northwestern countryside controlled by armed opposition groups (AOGs).
2. KIs were asked to select a first, second, and third highest priority needs in their communities. The ranking shows the sectors most frequently chosen as either first, second or third highest priority. The overall priority need refers to the frequency a sector was selected across all three categories (first, second or third highest priority).
3. KIs could select three answers, thus findings might exceed 100%.
4. KIs could select multiple answers, thus findings might exceed 100%.
5. KIs were asked about the situation currently, instead of the last 30 days.
6. KIs had the option to select the price in United States Dollars (USD), Turkish Lira (TRY), or Syrian Pounds (SYP). When the price was not reported in SYP, the NWS **REACH Market Monitoring**¹ exchange rate was used to calculate the amount in SYP. According to the NWS REACH Market Monitoring September 2021, 1 USD = 3,440 SYP; 1TRY= 416 SYP.
7. According to the NWS **REACH Market Monitoring** September 2021, 1 USD = 3,440 SYP.
8. Findings for residents and IDPs were merged. The merge was calculated as follows: (option was selected for either residents or IDPs) / (communities reporting challenges/barriers/coping strategies for either residents or IDPs).
9. According to the NWS **REACH Market Monitoring** September 2021, the Survival Minimum Expenditure Basket (SMEB) = 445,758 SYP.
10. Minor damage (cracks in walls, leaking roof, need of new doors and window repairs, etc.); Major damage (buildings with extensive damage to window frames and doors, but no structural damage to columns, slabs, or loadbearing walls); Severe damage (buildings with significant structural damage to column slabs, or loadbearing walls, cracking, steel elements and deformations visible in concrete; the building would require extensive repairs); Completely destroyed (buildings with structural damage so significant that rehabilitation is not possible).
11. KIs were asked about the situation in the last two months, instead of the last 30 days.
12. Adult hygiene items include: shampoo, toothbrush, and toothpaste. Household cleaning items include: washing powder, liquid, and dish detergent.

◆ By number of communities where KIs reported the relevant indicator for the relevant population group(s)

<i>Indicator</i>	<i>Subset</i>	<i>Indicator</i>	<i>Subset</i>
<i>N.o of communities reporting on:</i>		<i>N.o of communities reporting on:</i>	
Residents	350	Currency used for paying water	325
IDPs	338	Currency used for paying rent	244
Challenges to assistance access (resident)	249	Currency in which wages are paid (merge)	300
Barriers to assistance access (resident)	80	Barriers to accessing sufficient food (merge)	333
Challenges to assistance access (IDPs)	255	Days when water is available from network	294
Barriers to assistance access (IDPs)	61	Barriers to markets functioning	68

- a. United Nations Office for the Coordination of Humanitarian Affairs. (13 October 2021). Syrian Arab Republic: Developments in north-west Syria and Ras Al Ain - Tell Abiad - Situation Report No. 31 - September 2021. Retrieved from <https://reliefweb.int>
- b. Humanitarian Needs Assessment Programme. (October 2021). Mobility and Needs Monitoring MNM Syria - September 2021 - Non-State Armed Groups and Turkish-Backed Armed Forces (NSAG & TBAF) Controlled Areas.
- c. Al Jazeera. (8 September 2021). Several civilians killed in Syrian government attacks in Idlib. Retrieved from <https://www.aljazeera.com>
- d. Al Jazeera. (22 September 2021). War-ravaged Syrian rebel area struggles with virus surge. Retrieved from <https://www.aljazeera.com>
- e. Information provided by REACH field team.
- f. Humanitarian Needs Assessment Programme. (September 2021). Livelihood Situation Analysis in North-West Syria.
- g. REACH. (September 2021). Market Monitoring Exercise in Northwest Syria. Retrieved from <https://www.impact-repository.org>

About REACH

REACH facilitates the development of information tools and products that enhance the capacity of aid actors to make evidence-based decisions in emergency, recovery and development contexts. The methodologies used by REACH include primary data collection and in-depth analysis, and all activities are conducted through inter-agency aid coordination mechanisms. REACH is a joint initiative of IMPACT Initiatives, ACTED and the United Nations Institute for Training and Research - Operational Satellite Applications Programme (UNITAR-UNOSAT). For more information please visit our website: www.reach-initiative.org. You can contact us directly at: geneva@reach-initiative.org.