

# Situation Overview: Jonglei State, South Sudan

January-March 2018

**REACH** An initiative of  
IMPACT Initiatives  
ACTED and UNOSAT

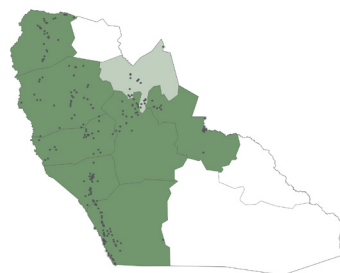
## Introduction

Ongoing conflict in Jonglei continued to negatively affect humanitarian needs among the population in the first quarter of 2018. Clashes between armed groups and pervasive insecurity, particularly in northern Jonglei caused displacement among affected communities, negatively impacting the ability to meet their primary needs.

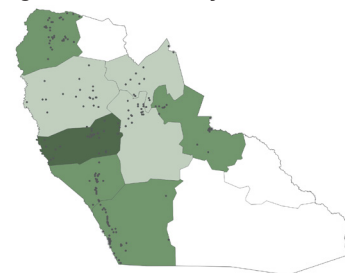
REACH has been assessing the situation in hard-to-reach areas in South Sudan since December 2015, to inform the response of humanitarian actors working outside of formal settlement sites. This settlement data is collected across South Sudan on a monthly basis. Between 2 January and 23 March, REACH interviewed 1527 Key Informants (KIs) with knowledge of humanitarian needs in 710 settlements in 7 of the 11 counties in Jonglei State.

In order to ensure an understanding of current displacement trends and humanitarian conditions in settlements from which displacement took place, new arrivals in data collection sites, representing 43% of KIs, were specifically targeted. The remainder of the KIs interviewed (57%) reported having been in the settlement or having had regular contact with someone from the settlement within the last month. For more information, please see the methodology section in this Situation Overview.

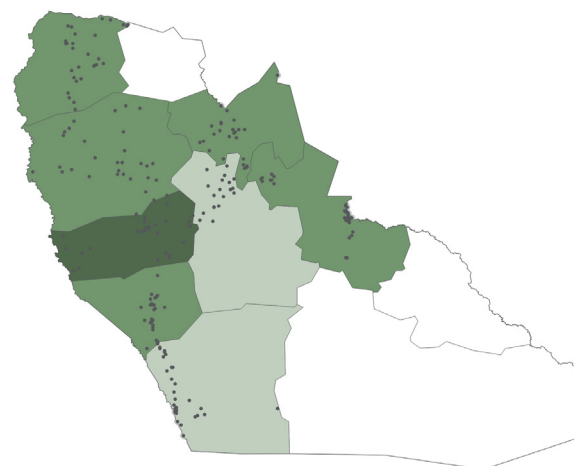
Map 1: REACH assessment coverage of Jonglei State, January 2018



Map 2: REACH assessment coverage of Jonglei State, February 2018

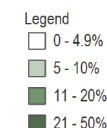


Map 3: REACH assessment coverage of Jonglei State, March 2018



### Assessed settlements

• Settlement  
Cover percentage of assessed settlements relative to the OCHA (COD) total dataset:



In the first quarter of 2018, displacement data from KI interviews were triangulated with seventeen Focus Group Discussions (FGDs), which involved participatory mapping exercises to understand the routes that internally displaced persons (IDPs) took. These included: a) seven FGDs with new arrivals from Greater Akobo (Uror, Nyirol and Akobo Counties) in Akobo Town, b) five FGDs with new arrivals and people who had recent contact with those in Greater Akobo and Ayod in Bor PoC, c) four FGD with new arrivals from

Bor South County in Yolakot, Awerial County, Lakes State and d) one FGD with new arrivals from Juba in Bor Town.

Informing further analysis on food security trends across the state, REACH also conducted ten Food Security and Livelihood (FSL) FGDs with new arrivals and people who had recent contact with those in relevant settlements including: a) four FGDs for Greater Akobo in Akobo Town, b) two FGDs for Duk County and two FGDs for Twic East County in

Bor Town, c) two FGDs for Ayod in Bor PoC. All this information is included in the data used for this Situation Overview.

This Situation Overview provides an update to key findings from the November 2017 Situation Overview.<sup>1</sup> The first section analyses displacement and population movement in Jonglei during the first quarter of 2018, and the second section evaluates access to food and basic services for both IDP and non-displaced communities.

## Population Movement and Displacement

Levels of depopulation remained high but stable overall in most parts of Jonglei in the first quarter of 2018. The proportion of assessed settlements in Jonglei reporting that half or more of the population had left remained similar between December 2017 (45%) and January 2018 (37%), with no considerable change in February or March.

However, an intensification of conflict between armed groups drove an increase in displacement within Greater Akobo in the first quarter of 2018. Indicative of this, 60% of assessed settlements in Greater Akobo reported that more than half the population had left in January, compared to an average of 37% across all assessed settlements in Jonglei. Moreover, in January 55% of assessed settlements with IDPs in Akobo

1 REACH South Sudan, Situation Overview, November 2017

## METHODOLOGY

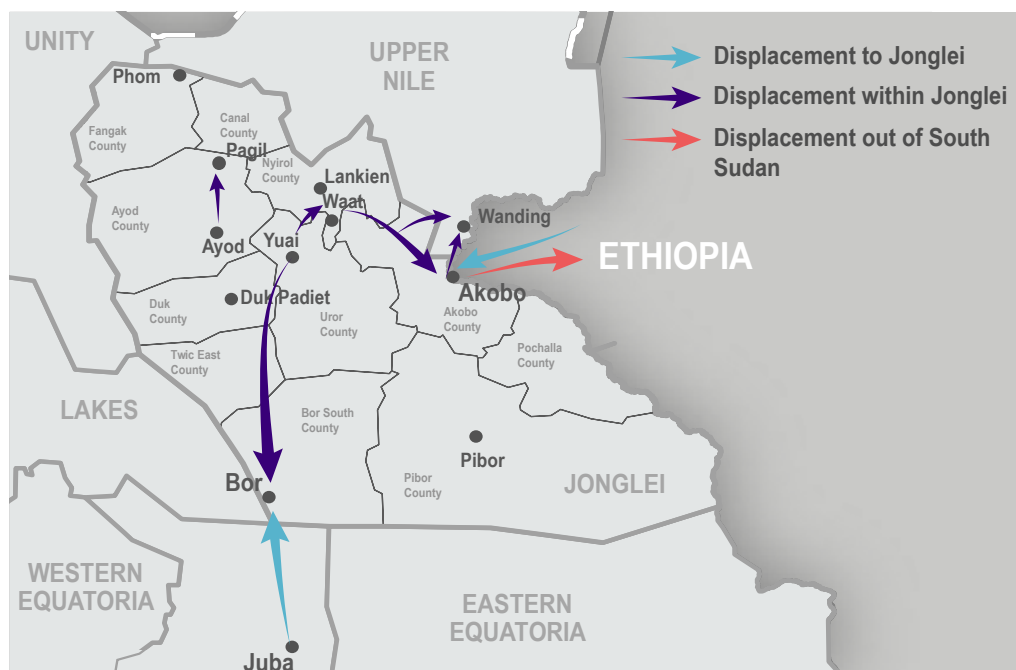
To provide an overview of the situation in largely inaccessible areas of Jonglei State, REACH uses primary data provided by key informants who have recently arrived, or received regular information, from their pre-displacement location or “Area of Knowledge”.

Information for this report was collected from key informants in the Mingkaman Spontaneous Settlement, Bor and Juba PoC sites, Bor Town, Akobo Town, as well as in Nyal, throughout the first quarter of 2018.

The first phase of the assessment methodology comprised a participatory mapping exercise to map the relevant settlements in Jonglei State. In-depth interviews were then conducted with selected participants, using a standardised survey tool comprising questions on displacement trends, population needs and access to basic services.

After data collection was completed, all data was examined at the settlement level, and settlements were assigned the modal response. When no consensus could be found for a settlement, it was not included in reporting. Descriptive statistics and geospatial analysis were then used to analyse the data. It should be noted that due to access/operational constraints which may impact on coverage in each month, some changes over time reported in the situation overview might be due to variations in coverage.

Map 4: Displacement Overview Jonglei State



groups, particularly in areas along the Yuai-Waat corridor, and other locations in Greater Akobo in January, continuing into early February<sup>2</sup>. Indicative of moderately improved security conditions, despite sporadic clashes, displacement into Akobo town decreased in March, with only 13% of assessed settlements in Akobo County in March reporting IDPs to have arrived that month, with 33% and 30% of assessed settlements reporting IDPs to have arrived in January and February respectively.

### Displacement within Jonglei

While overall levels of displacement remained stable across assessed settlements in Jonglei, conflict and deteriorating humanitarian conditions continued to drive displacement

within Jonglei in the first quarter of 2018. In addition to high levels of displacement in Greater Akobo, in March 40% of assessed settlements with IDPs in Fangak reported IDPs arriving in the first two months of 2018, predominantly from locations within Fangak, but also from locations in Panyikang and Guit Counties, indicative of persistent humanitarian needs in these areas.

### Displacement from Greater Akobo to Akobo Town

Following clashes between armed groups in Greater Akobo between 9 and 26 January, a large influx of IDPs arrived in Akobo Town in January and early February, with a joint verification exercise conducted by

humanitarian partners in Akobo Town on the 7 February registering 9,045 newly arrived individuals<sup>2</sup>. Reflective of this displacement, the proportion of assessed settlements reporting presence of IDPs in Greater Akobo increased from 60% in December to 72% in January, remaining stable in February before decreasing to 59% in March. This is consistent with reports from new arrivals interviewed during FGDs in Akobo in January who reported fleeing conflict in areas around Pieri, Motot, Yuai, Waat and Walgak, reaching Akobo in mid January. While the outbreak of conflict among armed groups was consistently cited as a primary factor behind their displacement, FGD participants also reported inadequate access to food due to lack of rainfall for cultivation, in addition to suspension of food distributions due to insecurity as reasons for their displacement. As those displaced from conflict affected areas in Uror moved to Akobo, traveling north of Waat before turning south-east to Walgak and onward to Akobo, some populations in the areas through which they passed also decided to leave, fearing the spread of conflict to their settlements<sup>3</sup>. In addition to those displaced from Greater Akobo who proceeded through Akobo West to Akobo Town, a smaller number proceeded to Ulang County, Upper Nile State, and to Lankien in Nyirrol County. For more information, please see the Greater Akobo Displacement Brief<sup>3</sup>.

### Displacement from Greater Akobo to Bor PoC

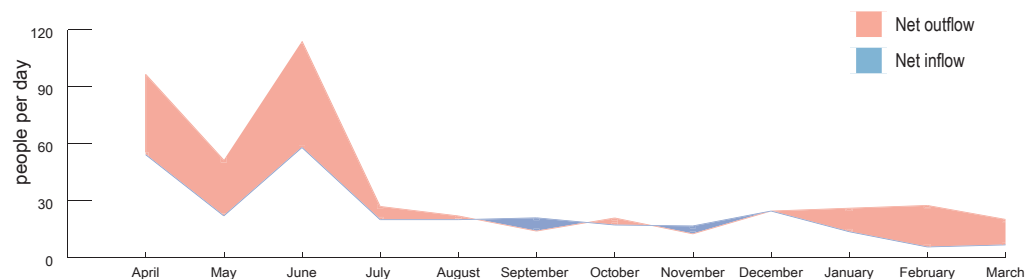
While displacement to Bor PoC site remained low in comparison to areas in Northern Jonglei, the number of new arrivals in Bor PoC

2 OCHA South Sudan, Humanitarian Bulletin Issue 02, 20 February 2018

3 REACH Greater Akobo Displacement Brief, February 2018

site doubled from 61 individuals in December, to 122 in January, with over two-thirds (72%) coming from conflict affected Uror or Nyirol<sup>4</sup>. This number increased to 133 in February, with a similar proportion coming from Uror and Nyirol (63%) compared with the previous month<sup>5</sup>. REACH interviewed new arrivals fleeing conflict in Pieri in January, who traveled on foot to Poktap in Duk County, before paying for transport by vehicles to reach Bor PoC site. FGD participants reported that in addition to the protection provided in Bor PoC site, they wished to access humanitarian services in the site, also citing the higher cost of reaching camps in Ethiopia via Akobo. In addition to conflict between armed groups in Greater Akobo, intercommunal violence remained a major cause of displacement. New arrivals from Nyirol interviewed during a FGD in Bor PoC site reported fear of inter-communal attacks to be among the reasons populations have fled, citing a cattle raid in Puokbor, north of Lankien, in which several people are reported to have been killed.

**Figure 1: Average monthly movement trends of people permanently leaving Akobo Town (red) and people returning from Ethiopia for more than four months (blue) per day from December 2016 to March 2018:**



### Displacement to and within Ayod County

FGD participants interviewed in Bor PoC site in March reported that some displaced populations from Uror and Nyirol traveled to locations in Pagil payam, reflective of conflict driven displacement from these areas.

FGD participants interviewed in Bor PoC site in February also reported displacement within Ayod, driven by fears of armed groups advancing from Wau town into areas surrounding Mogok and Jiech. Displaced populations then reportedly moved to Pagil Payam, placing further strain on resources in these areas.

### Cross Border displacement out of Jonglei

REACH Port Monitoring in Akobo Town tracks movement of South Sudanese traveling to and returning from Ethiopian refugee camps in Gambella. Following a considerable decline in movement to Ethiopia from Akobo in the second half of 2017 compared with the first half of the year, as recorded by REACH Port Monitoring teams, cross border movement to Ethiopia from Akobo almost doubled from

**Figure 2: Most reported reasons for leaving Akobo for locations in Ethiopia in March 2018:**

Insecurity	33 %
Lack of food	30 %
Lack of education	18 %
Lack of healthcare	9 %
Far from family	8 %
Other	2 %

an average of 13 people recorded crossing in November 2017 to an average of 25 per day in December 2017 (see Figure 1)<sup>7</sup>. This increased level of movement was sustained in January, with an average of 26 people per day recorded leaving Akobo for Ethiopia.

This trend is likely driven by the increase in insecurity in Greater Akobo in January, and refugee registration taking place in Pamdong, Ethiopia, which was ongoing through the first quarter of 2018. These trends remained stable in February, declining slightly in March, while the number of returnees fell considerably between December and January, from an average of 22 returnees per day to an average of 14 returnees per day. This decline continued in February, with an average of only 6 returnees per day recorded, remaining low in March. This is consistent with broader trends, as high levels of cross border displacement to Ethiopia were recorded by UNHCR, with 7,895 refugees arriving in January, with this figure declining to 3,886 in March<sup>8,9</sup>.

### Movement to Jonglei

In January, REACH interviewed IDPs originally from Bor South County who had been residing in Juba, who had been recently displaced to

Bor Town. FGD Participants cited insecurity and the effect of hyperinflation on participants capacity to access food as key push factors for leaving Juba. Participants traveled by boat, via Terekeka, costing roughly 3,500 SSP per person. While participants were from Bor South County, they expressed reluctance to return to their villages until insecurity, such as that related to land disputes were resolved. Please see the Protection section of this Situation Overview for more information.

## Situation in Assessed Settlements

### Food Security and Livelihoods

Overall the proportion of assessed settlements reporting adequate access to food remained stable through the first quarter of 2018. Sixty four percent of assessed settlements reported adequate access to food in January, showing no considerable change compared with December 2017 (68%). Similarly, this figure largely remained stable in February (67%) and March (58%). However, at county level, reported access to food in assessed settlements varied considerably across months.

### Bor-Duk Corridor (Bor South, Twic East and Duk)

There was considerable variation in the proportion of assessed settlements reporting adequate access to food along the Bor-Duk corridor in the first quarter of 2018. The proportion of assessed settlements reporting adequate access to food in Bor South County

4 ACTED Bor PoC Site Movement Trend Tracker, January 2018.

5 ACTED Bor PoC Site Movement Trend Tracker, February 2018.

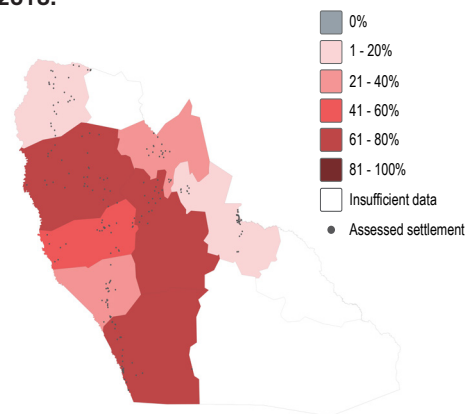
6 REACH SSD, Akobo Port Monitoring Factsheet, January 2018.

7 REACH SSD, Akobo Port Monitoring Factsheet, March 2018.

8 UNHCR Ethiopia Factsheet, January 2018

9 UNHCR Ethiopia Factsheet, March 2018

**Map 5: Proportion of assessed settlements reporting inadequate access to food in March, 2018:**



fell in each month in the first quarter of 2018, from 70% in January, to 60% in February, with a large decline in March, falling by half to 30%. Duk and Twic East Counties reported divergent trends in the first quarter of 2018, with the proportion of settlements in Twic East reporting adequate access to food rising steadily from 39% in January to 65% in March. Conversely, reported access to food remained low in Duk in the first quarter, with 44% of assessed settlements reporting adequate access to food in March, increasing slightly from 33% in January.

The divergent trends in reported access to food in assessed settlements in Duk and Twic East counties may be partly attributable to uneven access to humanitarian assistance, with food distributions taking place in Twic East County following bio-metric registration in March<sup>11</sup>. However, FGD participants interviewed in Bor Town reporting greater access to food in larger settlements such as Panyagor, with

more remote areas having less access. In Duk, access to humanitarian assistance was extremely limited in the first quarter, with no General Food Distributions (GFD) reported to have taken place during the first quarter<sup>12</sup>. Moreover, absence of food assistance was cited by the largest proportion of assessed settlements in Duk County as the main reason for inadequate access to food in February and March.

Overall, factors relating to insecurity such as an unsafe cultivation environment or crops being destroyed by conflict were the most prevalent reported reasons for inadequate access to food across assessed settlements in each month of the first quarter. This is consistent with reports of intercommunal violence in January and February from FGD participants displaced from Bor South interviewed in Yolakot, Awerial County, Lakes State. Similarly, FGD participants cited fears of intercommunal violence as negatively impacting access to food in both Duk and Twic East, in addition to environmental factors including lack of rainfall, pests and flooding negatively affecting cultivation. One quarter of assessed settlements in Bor South who reported inadequate access to food cited high prices as the primary reason for this insufficiency, consistent with the WFP Market Price Monitoring showing a 10% increase in the price of maize flour in February<sup>10</sup>. This is concerning given that the proportion of assessed settlements reporting markets as main food source increased between February (0%) and March (20%), with reliance on markets likely to increase with the progression

of the lean season.

Changes in reported livelihoods activities in assessed settlements along the Bor-Duk corridor in the first quarter were reflective of seasonal adjustments. There was a considerable decline in the proportion of assessed settlements reporting cultivation as a source of income in Twic East, falling from 61% in January, to 42% in February, to 33% in March reflective of depleted harvest food stocks for sale with the start of the lean season. In line with seasonal low access to harvest products but slowly increasing access to fishing and hunting towards the end of the reporting period due to the onset of rains, there was a considerable increase in the proportion of assessed settlements reporting fishing and/or hunting among their livelihoods activities in Duk, from 60% in January, to 88% in February, with all assessed settlements reportedly engaging in fishing and/or hunting in March. This is likely reflective of improved seasonal access to hunting. However, insecurity may reduce the level of access to such activities in some settlements- for more information please see the Coping Strategies section of this Situation Overview.

While overall the proportion of assessed settlements reporting physical access to cattle along the Bor-Duk corridor remained largely stable in the first quarter of 2018, with 80% of assessed settlements reporting physical access in March, reported levels of physical access to cattle decreased considerably between February and March in Duk, indicative of dry season cattle migration. Moreover, Duk reported the second lowest

proportion of assessed settlements reporting physical access to cattle compared with all assessed counties in Jonglei in March (66%), with only Fangak reporting a lower figure (34%). Reflective of this, reported regular consumption of milk decreased in assessed settlements along the Bor-Duk corridor in Between February (35%) and March (20%), thus reducing dietary diversity in affected settlements.

### Greater Akobo

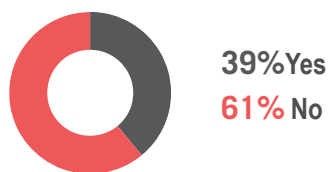
The proportion of assessed settlements reporting adequate access to food in Akobo in Nyirol and Uror counties across each month in the first quarter of 2018, rising from 76% in January to 89% in March. Assessed settlements in conflict affected Uror reported a decrease in adequate access to food across the first quarter of 2018, with 52% of settlements reporting adequate access to food in January, remaining stable in February, but declining to 39% in March. There were divergent food security trends reported in Nyirol in the first quarter of 2018. While the proportion of assessed settlements reporting adequate access to food increased slightly from 50% in February to 65% in March, the proportion of assessed settlements reporting malnutrition as the main cause of death also increased between January (5%) and February (38%), before decreasing in March (12%). Furthermore, of those assessed settlements that reported inadequate access to food, 83% reported hunger to be the worst it could be, and perceived to be causing deaths. These settlements were predominantly in areas affected by conflict, intercommunal

10 WFP South Sudan, Market Price Monitoring, March 2018

11 WFP IRRM Updates, 05 March 2018, 12 March 2018.

12 WFP IRRM Updates, January - March 2018.

**Figure 3: Proportion of assessed settlements in Uror reporting adequate access to food in March 2018:**



cattle raiding, or are located in close proximity to armed groups. However, further research is needed to better understand these dynamics.

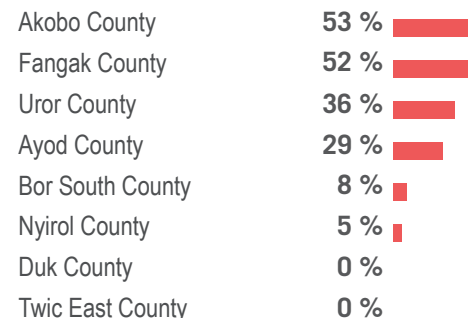
Factors relating to insecurity and displacement were cited as primary reasons giving rise to inadequate access to food in Nyirol and Uror counties in the first quarter. In February, an inability to access land due to insecurity was reported by the highest proportion of assessed settlements across Uror and Nyirol counties as the main reason for inadequate access to food (25%), with disruption of cultivation due to displacement reported as the main reason for inadequate access to food by 36% of assessed settlements in March. This is consistent with reports from newly arrived FGD participants from Uror interviewed in Bor PoC site, who reported that yields from cultivation were depressed by disruption of cultivation due to displacement, with FGD participants interviewed in Bor PoC site and Akobo Town consistently citing insecurity as a primary factor driving displacement from Nyirol.

While the main food source across assessed settlements in Akobo remained humanitarian assistance, it accounted for a declining proportion of settlements through the first quarter of 2018. This may be indicative of uncertain security conditions hindering

general food distributions in locations such as Kaikuny, Buong and Wiechjol in February, following the completion of general food distributions in Akobo East in January<sup>13</sup>. Similarly, while distributions took place in Uror in December and March in locations including Karam, Yuai, Pathai and Pieri, a planned distribution in February was delayed due to an outbreak of insecurity along the Yuai-Waat corridor<sup>14</sup>. Humanitarian assistance was severely disrupted in all but one GFD site in Nyirol (Chuil), where distributions took place in January and March, with no distributions taking place during the first quarter in other locations, leaving populations vulnerable as stocks from the previous harvest diminish with the onset of the lean season<sup>14</sup>. Reflective of this, only 5% of assessed settlements in Nyirol reported humanitarian assistance as their main food source in March (See Figure 5).

Reflective of dry season cattle migration, the proportion of assessed settlements in Uror and Nyirol counties reporting physical access to cattle decreased from 96% in January to 80% in March, whereby herds move to areas such as the Pading swamps and Chuil in Nyirol, and Toich in Duk in the case of Uror. Forty-four percent of assessed settlements reported presence of livestock disease, remaining largely unchanged compared with January, representing a cause for concern given concentration of herds in dry season grazing lands before the onset of the rainy season. Indicative of the progression of the dry season, there was a considerable decline in the proportion of assessed settlements in Uror and Nyirol counties reporting cultivation as an income source in the first quarter of

**Figure 4: Proportion of assessed settlements reporting humanitarian assistance as main food source in March 2018:**



2018, falling from 53% in January, to 33% in February, with 9% of assessed settlements reporting cultivation as an income source in March. Lack of physical access to cattle can be expected to continue until herds return from dry season grazing lands, while crop production will continue to decline as the peak lean season approaches.

Moreover, insufficient access to functioning markets further reduces capacity of populations in Nyirol to cope, with the only functioning market located in Lankien. Nyirol reported having the lowest proportion of assessed settlements with physical access to markets in each month of the first quarter, with three quarters of assessed settlements unable to access a market in March.

#### Ayod and Fangak

Similar to previous months, divergent trends in food security were reported in assessed settlements in Ayod and Fangak in the first quarter of 2018<sup>15</sup>. Eighty-seven percent of assessed settlements in Fangak reported adequate access to food in March, remaining

similar in the previous month, but slightly decreased from January when all assessed settlements reported adequate access to food. This may be partly attributable to a decrease in access to food assistance, with the proportion of assessed settlements reporting provision of food assistance in the past month falling from 100% in December, to 44% in February, before increasing in March (57%). This reported increase in March is likely reflective of distributions carried out in Paguer, Old Fangak and New Fangak, concluding in the first week of March, which are thus more likely to be reflected in March AoK data<sup>16</sup>.

Food security conditions in Ayod continued to be a cause of concern in the first quarter of 2018. The proportion of assessed settlements reporting adequate access to food decreased by roughly half from 62% in February to 29% in March, with the proportion of assessed settlements using extreme coping strategies such as only children eating, and spending days without food more than doubling between February (36%) and March (45%).

While food distributions have taken place in locations including Haat, Mogok, Jiech, Nyanapol, Normanyang and Karmun in the first quarter of 2018, the proportion of assessed settlements in Ayod reporting humanitarian assistance as their main food source fell from 53% in February to 29% in March<sup>17</sup>. Conversely, the proportion of assessed settlements reporting cultivation as main food source increased between February and March, from 37% to 61%. Given overall deterioration in reported access to food in assessed settlements, this likely represents

13 WFP IRRM Updates, 15 January 2018, 22 January 2018, and 12 February 2018.

14 WFP IRRM Updates, January - March 2018

15 REACH South Sudan, Situation Overview, November 2017

16 WFP IRRM Plan February 12, March 5, 2018

17 WFP IRRM Update January 15, February 5, February 12, March 5, March 12 2018

a lack of alternatives rather than increased availability of agricultural produce. Moreover, populations in remote areas may be unable to access humanitarian assistance. FGDs participants from Ayod interviewed in Nyal, Northern Panyijiar County, Unity State, reported that displaced populations in remote areas to be located far from established distribution sites.

Indicative of seasonal livelihood changes, the proportion of assessed settlements in Ayod and Fangak reporting cultivation as a source of income fell from 32% in January, to only 15% in March. Inability to access humanitarian assistance in addition to seasonal reduction in food stocks may render populations in the most remote settlements vulnerable to food shortages with the onset of the peak lean season.

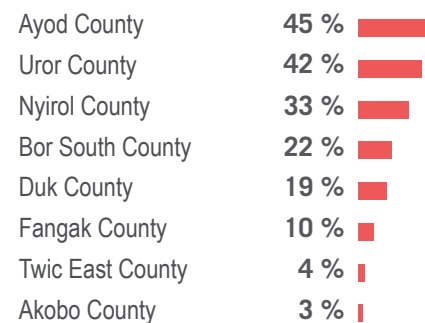
### Coping Strategies

Indicative of the strength of social networks in Jonglei, borrowing food remained the most common coping strategy as seen in previous months, used in 40% of assessed settlements in March, albeit declining from 56% in January. Moreover, FGD participants from Ayod and Nyirol interviewed in Bor PoC site and Akobo town respectively, noted that IDPs could receive food from their relatives in Wechdeng and Akobo town. However, displacement places strain on the capacity of these networks to share available food sources. In February, 39% of assessed settlements with IDPs reportedly experiencing severe hunger due to an influx of new arrivals in February, and 24% of assessed settlements reporting that an influx of IDPs had a large impact on their

ability to access to food in March<sup>18</sup>. Moreover, FGD participants from Akobo West and Uror noted that displacement had disrupted social networks as communities are forced to disperse to different settlements.

Insecurity may also be reducing capacity of communities to engage in seasonal coping strategies that may have helped supplement food stocks during the lean season, such as hunting. During FGDs conducted with IDPs from Twic East and Duk Counties in Bor PoC, participants commented that fears of intercommunal violence limits their capacity to engage in such activities, with FGD participants noting presence of similar constraints. Similarly, gathering wild food also remained a common coping strategy across Jonglei, with more than three quarters of settlements reporting wild food to be included in their meals some or all of the time in each month in the first quarter. However, FGD participants from Twic East and Duk reported that insecurity had rendered gathering wild food unsafe, thus further undermining the

**Figure 5: Proportion of assessed settlements in Jonglei reporting spending days without food as a coping strategy in March 2018:**



capacity of vulnerable communities to cope with shocks. Most strikingly, 23% of assessed settlements in Jonglei reported consuming wild foods that are known to cause sickness in March, remaining largely unchanged from previous months, indicative of severe food insecurity in these settlements.

Moreover, moderate, short term coping strategies appeared insufficient to meet all households needs in the first quarter of 2018. In March, spending days without food or only children eating were used as coping strategies in 23% and 20% of assessed settlements, remaining largely unchanged from previous months, with 6% of assessed settlements reported consuming an average of less than one meal per day in March. This was most acute in Nyirol, which reported the highest proportion of assessed settlements consuming less than one meal per day on average in February (38%) and March (21%), with Uror having the highest proportion in January (26%). These severe coping strategies indicate serious food insecurity, increases the risk of disease, and leave communities extremely vulnerable to further shocks as the peak lean season approaches.

### Protection

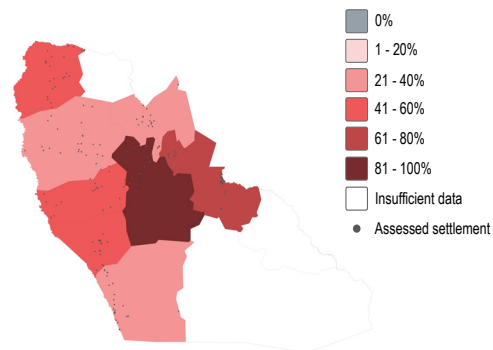
The persistence of conflict between armed groups, intercommunal violence and displacement continued to cause protection concerns in Jonglei in the first quarter of 2018. Reflective of the intensification in fighting between armed groups in Greater Akobo in January and February, the proportion of assessed settlements in Uror and Nyirol

counties reporting an incident of conflict in which at least one civilian was killed or property damaged through conflict was the highest across assessed settlements in Jonglei. In January 96% and 95% of assessed settlements in Uror and Nyirol respectively reported such incidents, compared with an average across all assessed settlements in Jonglei of 37%. The proportion of assessed settlements reporting such incidents in Uror remained largely unchanged in February, while this figure decreased to 55% in Nyirol, albeit remaining the county with second highest proportion of assessed settlements reporting conflict related deaths or property damage. Despite sporadic insecurity, both counties saw a decrease in March, when conflict was reported to have reduced, with the proportion of assessed settlements reporting such incidents in Uror falling to 29%, and to 32% in Nyirol.

While conflict between armed groups was largely concentrated in Greater Akobo in the first quarter of 2018, intercommunal violence continued to be a source of insecurity and protection concerns in many parts of Jonglei. Conflict arising from a land dispute between sub-clans broke out in Kolnyang payam in Bor South County at the end of 2017, extending into February 2018, resulting in loss of life according to FGD participants interviewed in Yolakot, Awerial county, Lakes State. Consistent with this heightened insecurity and general high reported prevalence of the risk of cattle raids, the most reported threat to men in assessed settlements in Bor South County was being killed or injured by people from

<sup>18</sup> Indicator not available in previous months

**Map 6: Proportion of assessed settlements reporting main protection concern for women to be SGBV related in March 2018<sup>20</sup>:**



another community in each month of the first quarter.

Sexual and Gender Based Violence (SGBV) remained a major protection concern for women in Jonglei, with SGBV reported as the main protection concern for women by the highest proportion of assessed settlements in March (46%), remaining largely unchanged from previous months. SGBV was also the most reported protection concern for girls in assessed settlements in Jonglei in January (44%), February (51%) and March (49%)<sup>20</sup>. For boys, abduction was the main protection concern in assessed settlements in each month of the first quarter of 2018. This was particularly acute in counties along the Bor-Duk corridor, which may be linked to serious incidents of intercommunal violence involving abduction in late 2017<sup>19</sup>. Overall these findings indicate that in addition to protection risks associated with the conflict between armed groups, populations similarly face more localized risks associated with intra and inter-

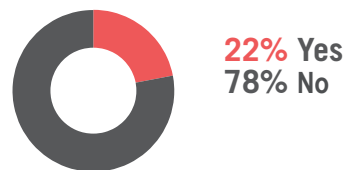
communal violence.

### Shelter and Non-Food Items (NFIs)

While shelter conditions remained stable overall in assessed settlements in Jonglei in the first quarter of 2018, the escalation of conflict in Greater Akobo in January gave rise to heightened shelter concerns. In conflict affected Uror, the proportion of assessed settlements reporting damage to shelters due to conflict doubled from 10% in December 2017, to 20% in January 2018, and showed no considerable decrease through February and March. This is consistent with widespread insecurity, particularly, in areas along the Yuai – Waat corridor such as Pieri and Motot, where FGD participants interviewed in Akobo reported shelters being burned during clashes between armed groups.

This is particularly concerning given persistence of displacement whereby households were forced to flee conflict affected areas without essential NFIs in the first quarter of 2018. In January and March, the primary NFI items reportedly needed for communities to meet the immediate needs of IDPs in assessed settlements in Jonglei was mosquito nets, with 27% and 20% of assessed

**Figure 6: Proportion of assessed settlements in Uror reporting damage to shelters due to conflict in March 2018:**



settlements with IDPs citing this as the primary NFI need respectively. In February, sleeping mats were cited by 20% of assessed settlements as the NFI item most needed for IDPs. Moreover FGD participants who had fled conflict in Greater Akobo in January cited NFIs as a major humanitarian need on their arrival in Akobo town. Reflective of this, In March, only 28% of assessed settlements with IDPs reported receiving an NFI distribution in the past three months. Inadequate access to essential NFIs such as mosquito nets, particularly among IDP populations in Jonglei, may leave these populations increasingly vulnerable to disease with the onset of the rainy season.

### Health and Water, Sanitation and Hygiene (WASH)

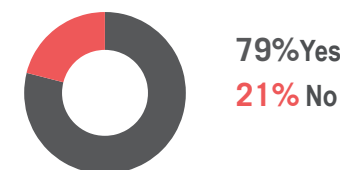
Malaria remained the major health concern in assessed settlements in Jonglei in the first quarter of 2018, particularly along the Bor-Duk Corridor, located near the Sudd. This is particularly concerning in light of continued need for mosquito nets and the approach of the rainy season. In January, malaria was reportedly the main cause of death in 46% of assessed settlements. This figure gradually declined in February (33%) and March (20%) with the progression of the dry season.

Given the continued inadequate access to clean water and sanitation, the proportion of assessed settlements reporting waterborne diseases as the most common health problem showed no considerable change from January (24%) through February (15%) to March (24%), representing the second most

commonly reported health problem across assessed settlements after malaria in the first quarter of 2018. The high prevalence of settlements reporting waterborne diseases as most common health problem is likely associated with reported inadequate access to latrines in assessed settlements. This problem is particularly acute in counties in Western Jonglei along the River Nile, where 74% of assessed settlements reported having no access to latrines in January, 82% in February and 71% in March. Moreover, access to safe drinking water remained a particular concern in Ayod and Fangak, where at least a third of assessed settlements reported primarily using unprotected water sources in each month of the first quarter, except March, when 21% of assessed settlements reported primarily using unprotected water sources in Fangak. Given previous outbreaks of cholera in Ayod and Fangak, these inadequate WASH conditions represent a risk factor in the event of future outbreaks.

Between 7 December 2017 and 17 March 2018, 40 suspected cases of Rift Valley Fever were reported in Eastern Lakes (Awerial, Yirol East, Yirol West) neighbouring Bor South County. While there were no reported cases

**Figure 7: Proportion of assessed settlements reporting access to health facilities in Jonglei in March 2018.**



<sup>19</sup> OCHA South Sudan Humanitarian Bulletin, December 8th, 2017.

<sup>20</sup> SGBV is comprised of the indicators: Domestic Violence, Sexual Violence, and Early or Forced Marriage

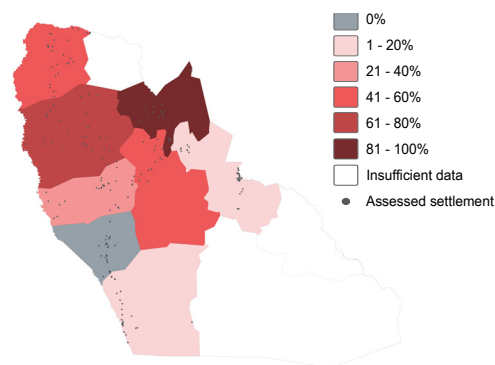
in Bor South County in March, the risk of the disease spreading remains a concern for both livestock and humans<sup>21</sup>.

Access to health facilities in assessed settlements in Jonglei showed no considerable change in the first quarter with 70% of assessed settlements reporting access to a health facility in January and February, and 79% in March. March saw an improvement in access to healthcare facilities in assessed settlements in Greater Akobo, rising from 38% in February to 79%. This may be associated with improved security conditions in Greater Akobo in March, in addition to Médecins Sans Frontières' expansion to a new primary healthcare facility in Kier, north of Akobo town on the River Sobat.

## Education

The proportion of assessed settlements in Jonglei reporting access to education increased during the first quarter of 2018, from 50% in January to 62% in February, and remaining stable in March. This increase is likely associated with the commencement of the new academic year in February<sup>22</sup>. Despite this moderate improvement in February, disparities in access to education persist, both geographically and in regard to gender. Overall, the highest proportion of assessed settlements reporting access to education were concentrated along the Bor-Duk corridor in each month of the first quarter of 2018, while Ayod, Fangak and counties in Greater Akobo remained a concern in terms of education access. This is despite an increase in reported access to education in Greater Akobo in March

**Map 7: Proportion of assessed settlements reporting no access to education services in Jonglei in March 2018:**



(56%) compared with the previous month (33%). Moderate improvements in security conditions may have been a contributing factor in this, as well as the commencement of the new school term.

Among assessed settlements with reported access to education services, pervasive gender disparities continue to be a major cause of concern. Despite a decrease in the proportion of assessed settlements where a majority of boys attended school regularly from 69% in January to 52% in March, girls attendance remained considerably lower. In January, a majority of girls reportedly regularly attended school in only 7% of assessed settlements reporting access to education services in Jonglei, with no considerable change in subsequent months. Fees remained one of the primary reasons for low attendance amongst boys and girls in each month in the first quarter of 2018, in addition to needing to engage in work in the household or other forms of labour. For girls in particular, the proportion

of assessed settlements that reported needing to engage in household or agricultural work as the main reason for low attendance increased from 22% in January to 40% in March. This may be linked to start of preparation of land for planting season, in which girls are typically engaged at the household level.

## Conclusion

In the first quarter of 2018, displacement continued to be a major factor giving rise to humanitarian needs, particularly in northern Jonglei. An outbreak of conflict between armed groups in Greater Akobo in January resulted in major displacement to Akobo Town, with smaller groups fleeing to Bor PoC and locations in Ulang County, Upper Nile State. While security conditions saw a moderate improvement in March, the situation remained volatile. Given the onset of the lean season and likely deterioration of food security conditions, further displacement in Greater Akobo is likely.

While the overall proportion of assessed settlements in Jonglei reporting access to adequate food remained stable in the first quarter of 2018, certain counties such as Ayod, Bor South, and conflict affected areas in Greater Akobo saw a considerable deterioration. Insecurity and resulting displacement consistently emerge as key factors behind food shortages. Moreover, persistent insecurity has also undermined the use of moderate coping strategies, forcing vulnerable populations to engage in more extreme, long term coping strategies, leaving them extremely vulnerable to further shocks.

Ongoing conflict and displacement in the first quarter of 2018 has also impacted access to basic services in assessed settlements, particularly in Ayod and Greater Akobo.

Access to health services remained stable overall, while WASH needs were most acute in counties along the River Nile, where access to latrines was most limited. Conflict and displacement continued to give rise to Shelter and NFI needs across the state, particularly in areas hosting IDPs. Inadequate access to basic NFIs such as mosquito nets is particularly concerning as malaria reportedly remained the primary cause of death in the highest proportion of assessed settlements across the state in the first quarter.

In light of ongoing conflict and depleting food stocks with the onset of the peak lean season, in addition to high levels of displacement, humanitarian needs are likely to increase in Jonglei in the coming months.

### About REACH Initiative

REACH facilitates the development of information tools and products that enhance the capacity of aid actors to make evidence-based decisions in emergency, recovery and development contexts. All REACH activities are conducted through inter-agency aid coordination mechanisms.

For more information, you can write to our in-country office: [southsudan@reach-initiative.org](mailto:southsudan@reach-initiative.org) or to our global office: [geneva@reach-initiative.org](mailto:geneva@reach-initiative.org).

Visit [www.reach-initiative.org](http://www.reach-initiative.org) and follow us @REACH\_info.

21 South Sudan: Integrated Disease Surveillance and Response (IDSR) - Epidemiological Update, 18 March

22 UNICEF South Sudan Humanitarian Situation Report, 1 – 28 February 2018