

# AFGHANISTAN - Herat Province

## Injil District - Wahdat / ABR infrastructure mapping - December 2021

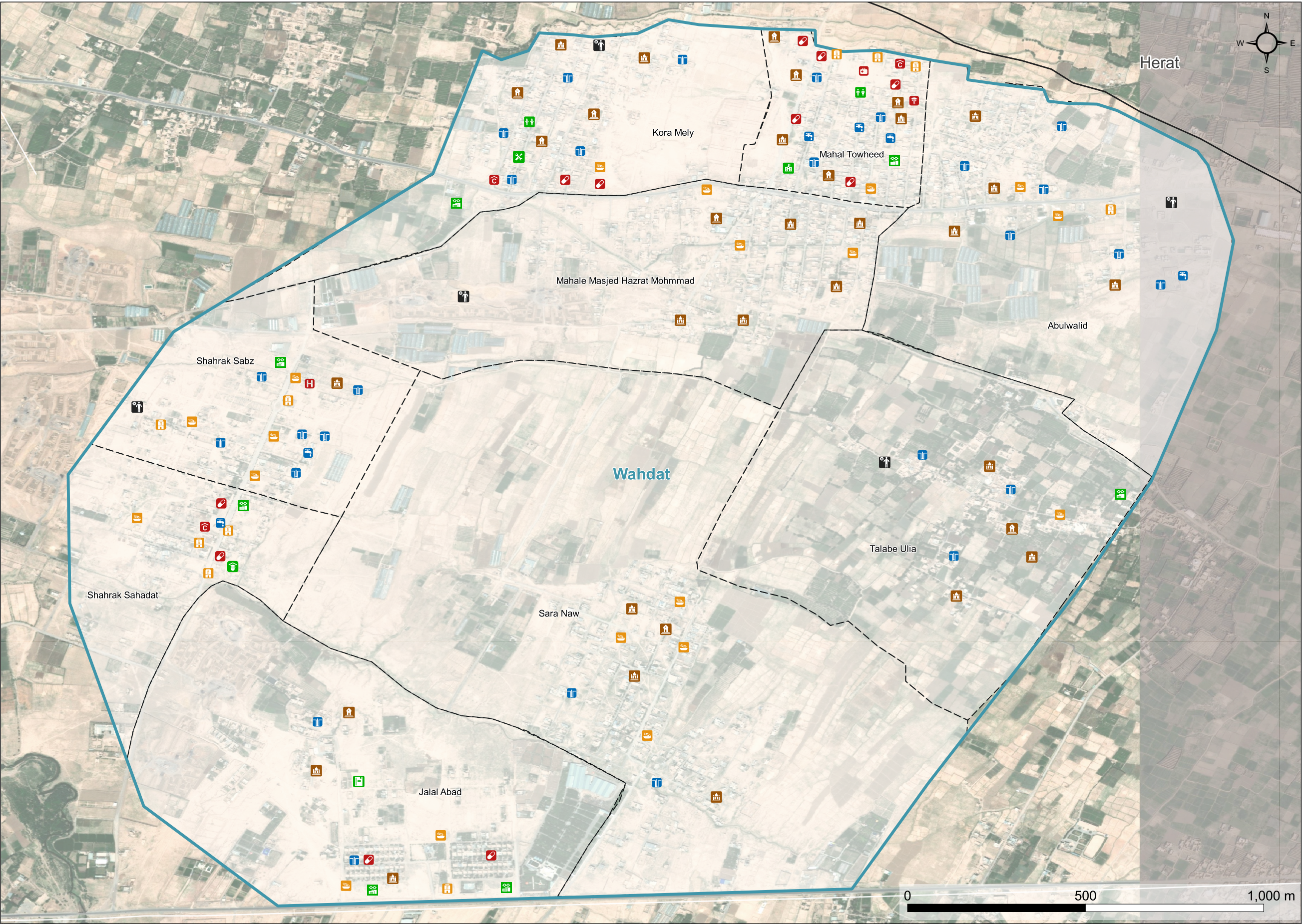
For Humanitarian Purposes Only  
Production date : 17-May-2022

**Boundaries**

- Gozar boundary
- Nahiya boundary
- District boundary
- Province boundary

**Infrastructures**

- Public well
- Public tap
- Public borehole
- Basic Health Centre
- Comprehensive health centre
- Clinic
- Hospital
- Family health house
- Health sub-centre
- Medical Camp
- Pharmacy
- Primary school
- Secondary school
- High school
- University
- Technical School
- Madrasa
- Technical training center
- Early childhood education
- Large bazaar
- Small bazaar
- Friday mosque
- Small mosque
- Cemetery
- Main road



Data sources:  
ISet boundary and Infrastructures: REACH  
Admin Boundaries and roads: AGCHO  
Coordinate System: GCS WGS 1984  
Contact: reach.mapping@impact-initiatives.org

Imagery:  
Satellite Imagery: Maxar (GE01) from 13 March 2020  
Copyright: ©2020 DigitalGlobe  
Source: ESRI  
File:  
REACH\_AFG\_Map\_ABR\_infrastructure\_mapping\_Herat  
\_Injil\_Wahdat\_17May2021\_A3L

Definition:  
Gozar: Urban unit denoting a community, analogous to a neighbourhood

Note: Data, designations and boundaries contained on this map are not warranted to be error-free and do not imply acceptance by the REACH partners, associates, donors mentioned on this map.