

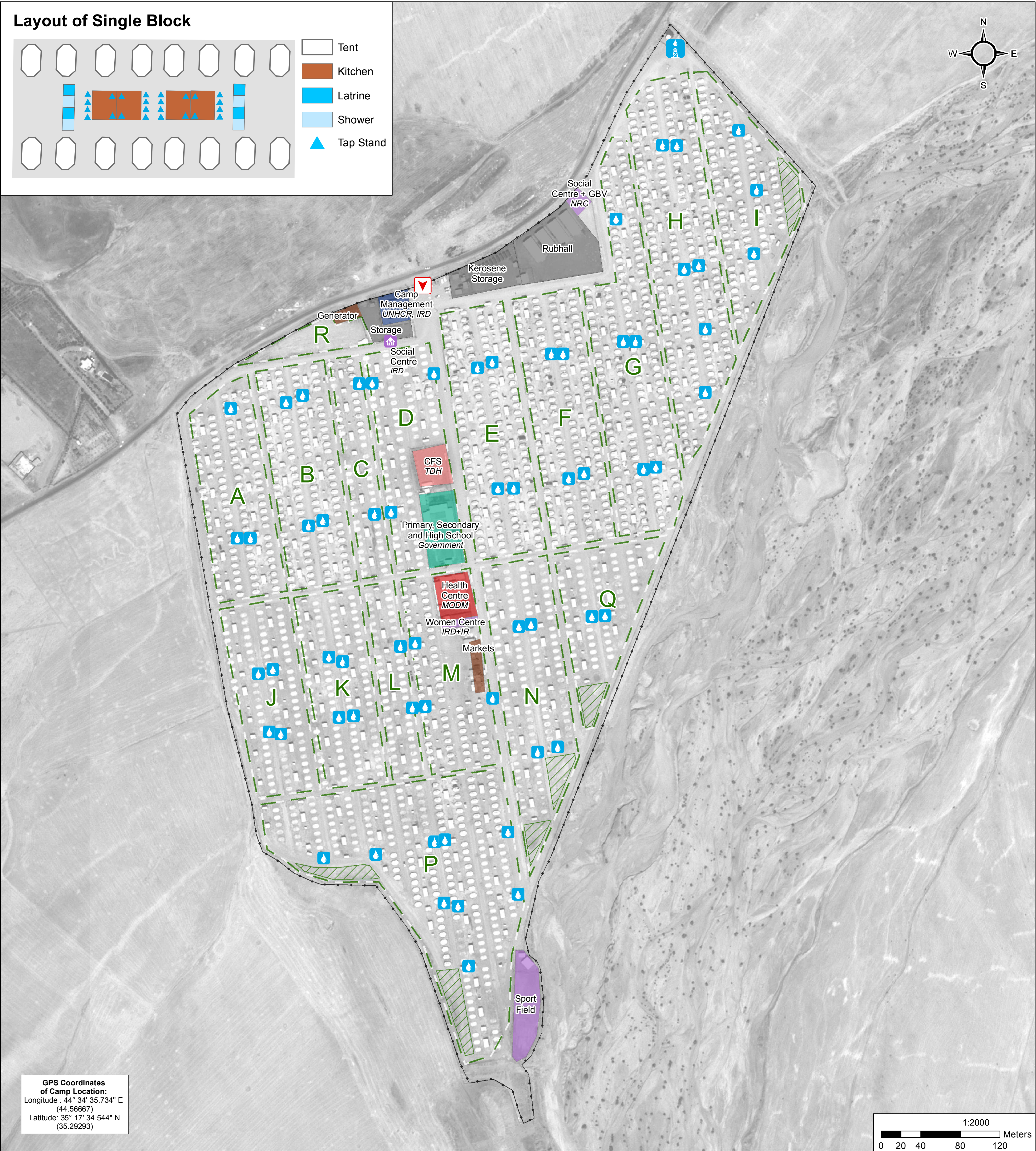
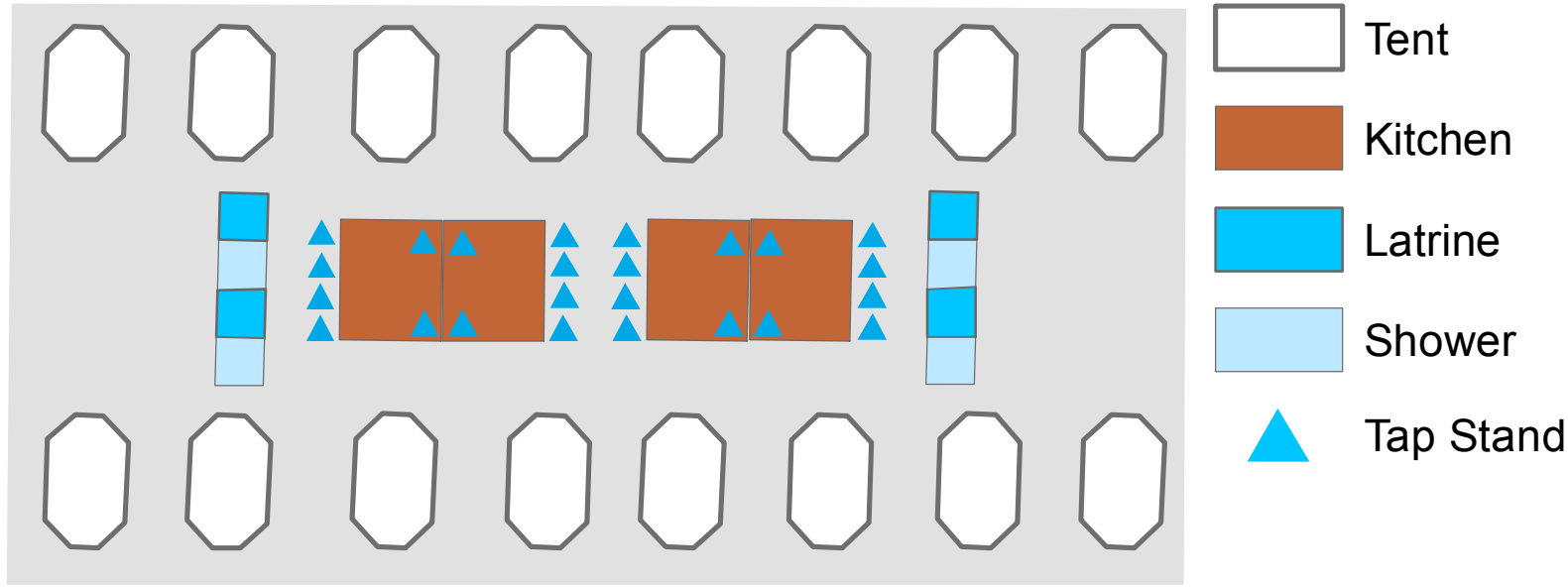
# IRAQ - Kirkuk Governorate - Nazrawa Camp

## General Infrastructure - Updated 21 May 2017

For Humanitarian Purposes Only  
Production date: 21 May 2017

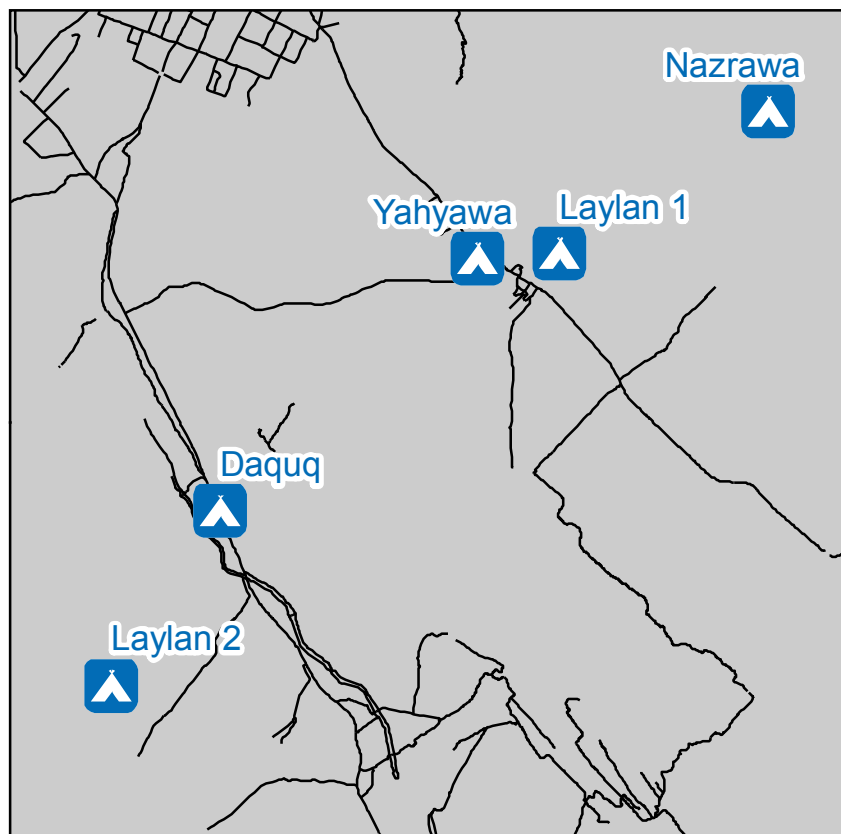
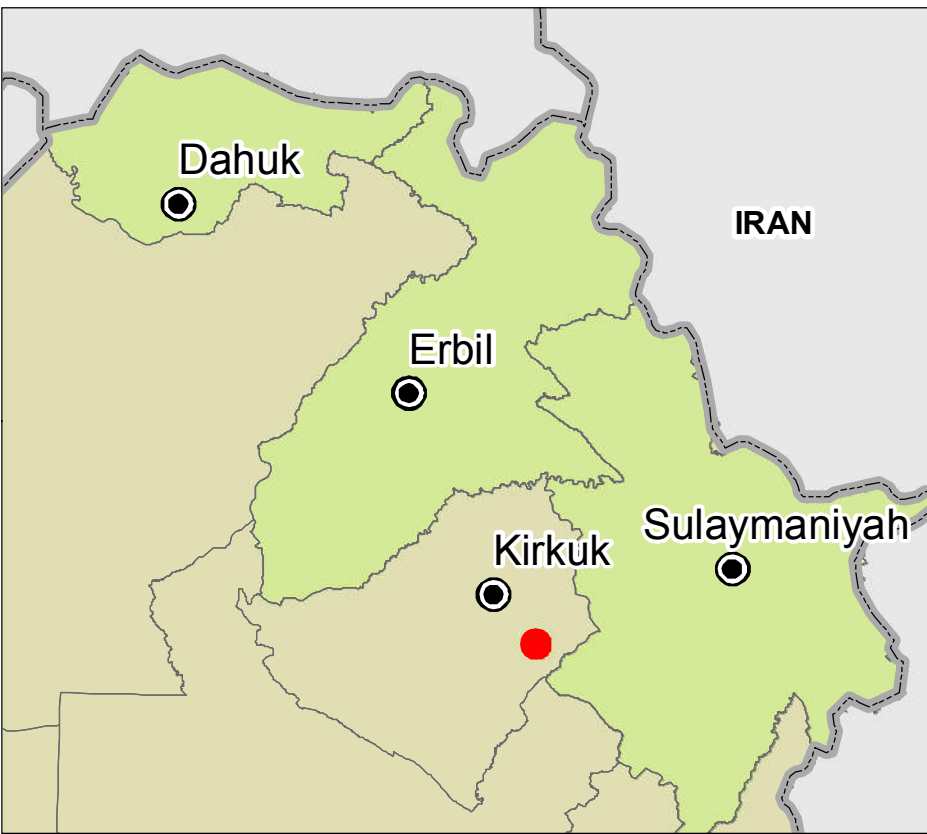


### Layout of Single Block



GPS Coordinates of Camp Location:  
Longitude : 44° 34' 35.734" E  
(44.56667)  
Latitude: 35° 17' 34.544" N  
(35.29293)

1:2000  
0 20 40 80 120 Meters



### Camp Infrastructure

- Fence
- Sector (A - P)
- Tented Area
- Health
- Office
- Education
- Child Friendly Space
- Community Area

- Service
- Storage
- Entrance
- Storage
- Elevated Water Tank
- Water Tank

Data sources:  
Camp Infrastructure: 21/5/2017, REACH Initiative  
Satellite Imagery: Pleiades from 29/07/2016  
Copyright: CNES  
Source: Airbus DS

Coordinate System: WGS 1984 UTM Zone 38N  
Projection: Transverse Mercator  
File: IRQ\_MAP\_IDP\_Nazrawa\_21May2017  
Contact : iraq@reach-initiative.org

Note: Data, designations and boundaries contained on this map are not warranted to be error-free and do not imply acceptance by the REACH partners, associated, donors mentioned on this map.