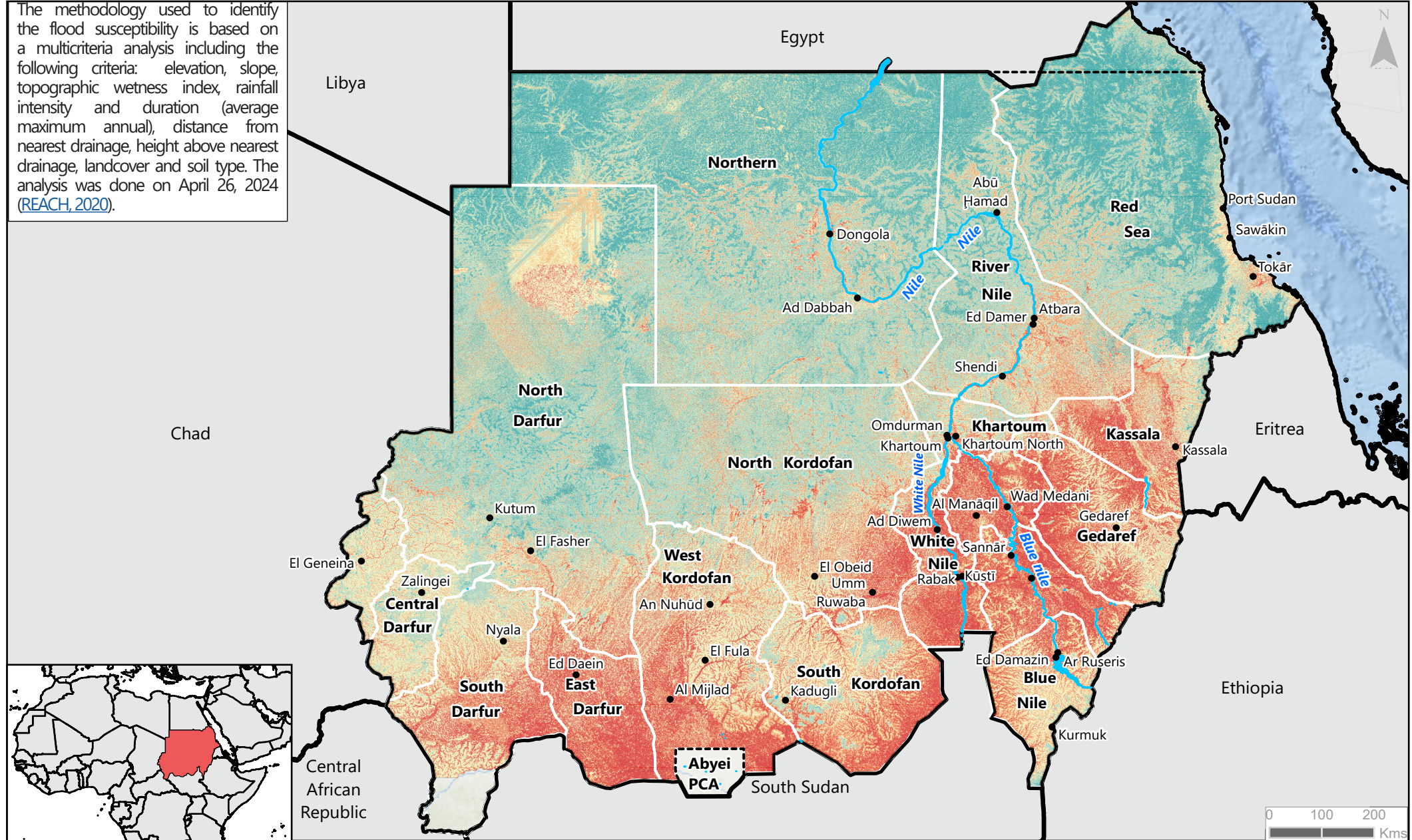


REPUBLIC OF SUDAN

Flood susceptibility map of 26 April 2024

For humanitarian purpose only
Production date May 05, 2024

The methodology used to identify the flood susceptibility is based on a multicriteria analysis including the following criteria: elevation, slope, topographic wetness index, rainfall intensity and duration (average maximum annual), distance from nearest drainage, height above nearest drainage, landcover and soil type. The analysis was done on April 26, 2024 (REACH, 2020).



Flood susceptibility

■ Very low	■ High	■ Major river
■ Low	■ Very high	 State boundary
■ Medium	 Disputed boundaries	

Note: Data, designations and boundaries contained on this map are not warranted to be error-free and do not imply acceptance by REACH partners, associates or donors mentioned on this map.

Coordinate System: WGS 1984 UTM Zone 35N
Projection: Transverse Mercator Datum: WGS 1984
Units: Meter
File: REACH_SDN_Map_Flood_Susceptibility_May2024_A4.pdf
Contact: reach.mapping@impact-initiatives.org
Flood susceptibility analysis: UNOSAT

