



Bor Snapshot

Bor South County, Jonglei State, South Sudan

South Sudan Displacement Crisis

December 2015

Summary

Bor protection of civilian site (PoC) site was established in December 2013 following outbreaks of violence which forced people into the UNMISS base for refuge. In September 2014 PoC was relocated to the current site.

Population remains stable with occasional arrivals for reunification purposes. Camp management addressed major floods in the PoC in November. However, with the support of IOM and UNMISS the situation was stabilised.

Data was provided by IOM DTM (03/12/2015) and camp manager (as of 06/12/2015) spatial data was also provided by REACH (as of 23/01/2015).

Site Overview

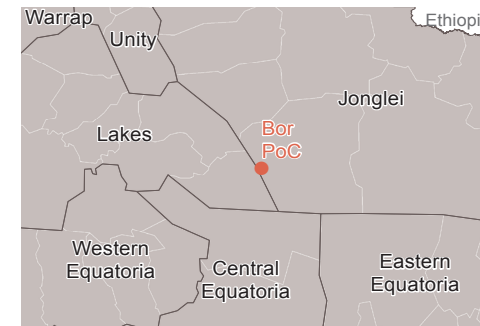
Site management: ACTED
Site population: 2,289*
Accommodation: 1,085 structures
Planned capacity: 1,245 structures
Site area: 80,905 m²

IDP County of origin

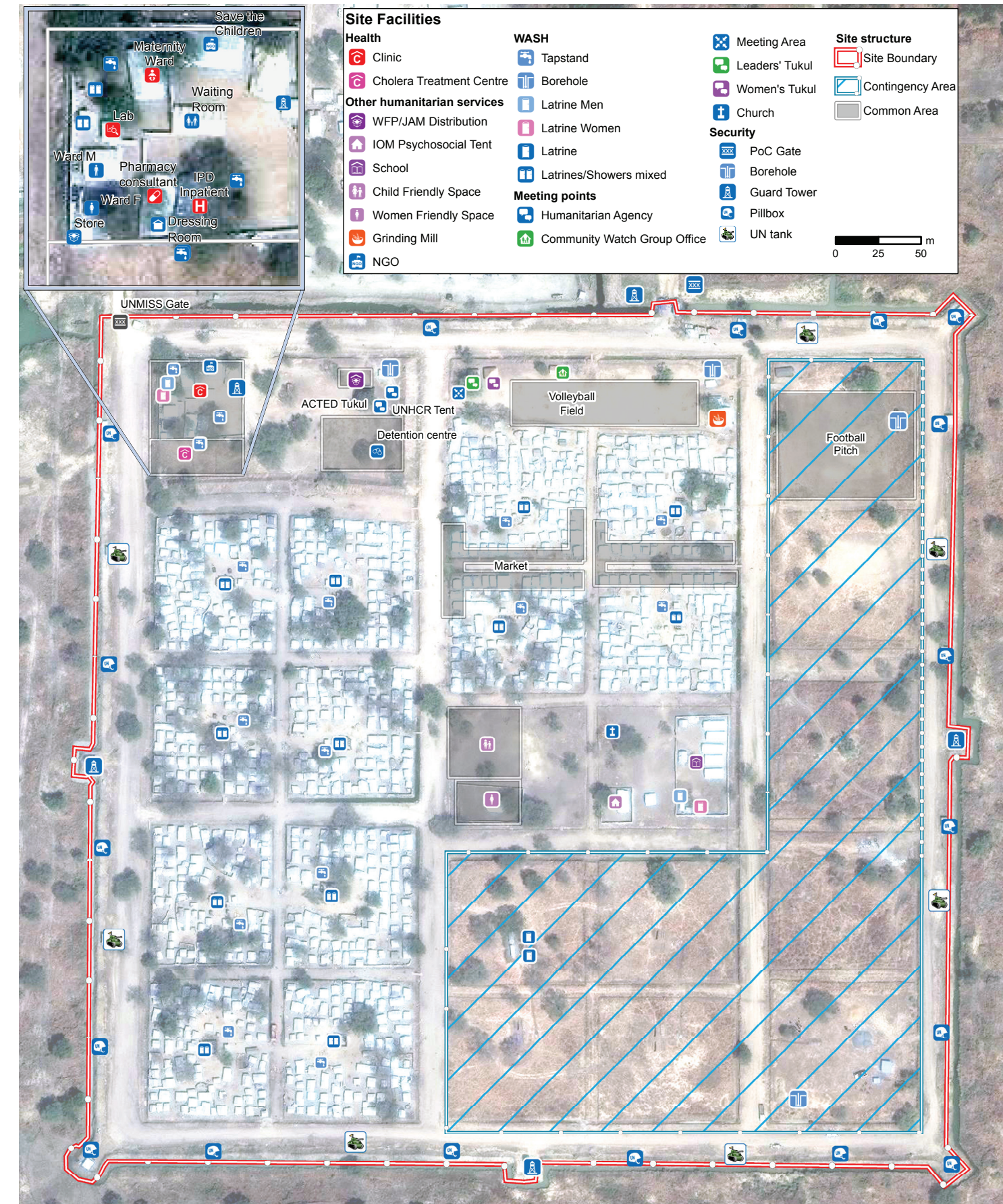
1st largest group Akobo
Other large groups Not specified

* Population figure provided by Camp manager (06/12/2015).

Location Map



Bor Site Map



Lat: 6.184 Long: 31.606

Implementing Agencies

EDUCATION	INTERSOS, Unicef
FOOD	WFP, JAM, SAADO, Save the Children
HEALTH	Health Link, WHO, UNFPA
PROTECTION	UNHCR (SFP), Intersos
SHELTER / NFI	Intersos, IOM
WASH	IAS

CCCM Mechanisms

The following structures are in place:

- ☒ **Representative chairman**
- ☒ **Youth committee**
- ☒ **Women's leadership committee**
- ☒ **Block leaders**
- ☒ **Court of elders**

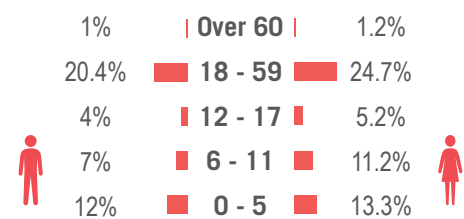
Reported Priority Needs

Priority needs were reported and ranked by camp management as:

- 1 Protection** (people are leaving the PoC to collect fire wood)
- 2 Health** (mental disease, psycho social support)
- 3 Biometric verification**

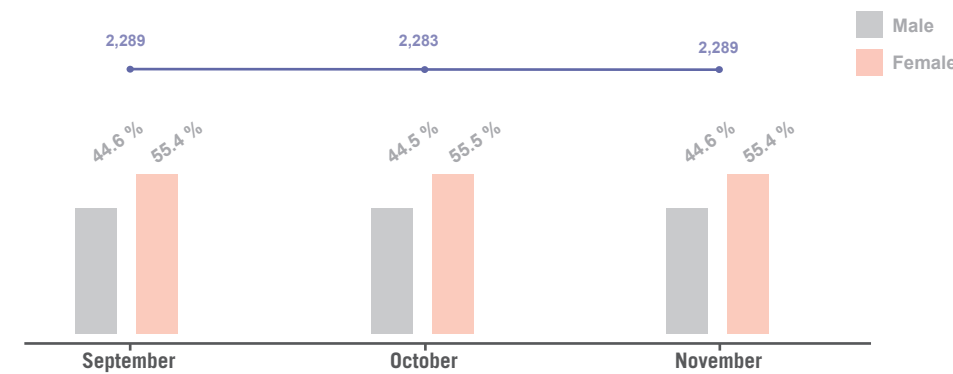
Demographics

44.4% male / 55.6% female**



** Population figure by camp manager (as of 09 Dec 2015)

Demographic Trends**



** Figure extracted from the DTM. No extra data / information was available.

Sectoral Overview

		Target***	Achieved	
Food	Food accessible on-site	Yes	Yes	●
	Markets physically accessible from site	Yes	Yes	●
Health	Health services are available on-site or within walking distance	Yes	Yes	●
CCCM	Average open area per person	min. 30 m ²	35.3 m ²	●
	% of families living in rakoobas/tukul	min 75%	less than 75%	●
	% of families living in makeshift shelters	0%	0%	●
	Average number of individuals per tent	max 5	2.1	●
Shelter	Average covered area per person****	min 4.2 m ²	7 m ²	●
	Liters of water available per person per day	min 15 L	N/A	●
Water Sanitation	# of persons per latrine (m/f)	max 20	19	●
	# of persons per shower (m/f)	max 20	24	●

*** Targets are based on minimum standards agreed with the CCCM Cluster ● Target reached, ● Target more than 50% reached, ● Target less than 50% or not at all reached, ● No data
**** Bor PoC shelters averagely measure 15 m²



CCCM CLUSTER
SUPPORTING DISPLACED COMMUNITIES

For more information on this profile please contact:
REACH Initiative: south.sudan@reach-initiative.org
CCCM Cluster: cccmsouthsudan.coord@gmail.com

REACH An initiative of
IMPACT Initiatives
ACTED and UNOSAT