

# Yemen Joint Market Monitoring Initiative

## August Situation Overview 2020

Governorates: 16  
Districts: 46  
Total key informants (KIs): 277



**WASH Cluster**  
Water Sanitation Hygiene

**CWG**

**CASH  
WORKING  
GROUP**

**REACH**

Informing  
more effective  
humanitarian action

### Introduction

The Yemen Joint Market Monitoring Initiative (JMMI) was launched by REACH in collaboration with the Water, Sanitation, and Hygiene (WASH) Cluster and the Cash and Market Working Group (CMWG) to support humanitarian actors with the harmonization of price monitoring among all cash actors in Yemen. The JMMI incorporates information on market systems including price levels and supply chains. The basket of goods to be assessed includes ten non-food items (NFIs), such as fuel, water, and hygiene products, reflecting the programmatic areas of the WASH Cluster. The JMMI tracks all components of the WASH and Food Survival Minimum Expenditure Basket (SMEB) as well as other food and non-food items. In light of the current COVID-19 pandemic, REACH has adapted the JMMI to begin assessing the potential impact of the pandemic on markets and on respondents' businesses.

### Methodology

Data was collected through interviews with vendor Key Informants (KIs), selected by partner organisations from markets of various sizes in both urban and rural areas. More details are available in the methodology section of the appendix. Findings are **indicative** for the assessed locations and time frame in which the data was collected. From April 2020, data for the JMMI has been collected on a bi-weekly basis to better track disruptions caused by COVID-19. COVID-specific JMMI factsheets are produced bi-weekly, and a more comprehensive situation overview using data from both factsheets is produced monthly. Data from the second round (final week) of the month will be compared to data from the last week of the previous month, to ensure a consistent month-to-month comparison. Please refer to the [appendix](#) for additional methodological details.

### JMMI monthly figures

Data collection August (round 1) **9 August - 17 August**

**10** Participating partners  
**48** Districts assessed  
**229** Vendor KIs surveyed

Data collection August (round 2) **23 August - 30 August**

**11** Participating partners  
**48** Districts assessed  
**277** Vendor KIs surveyed

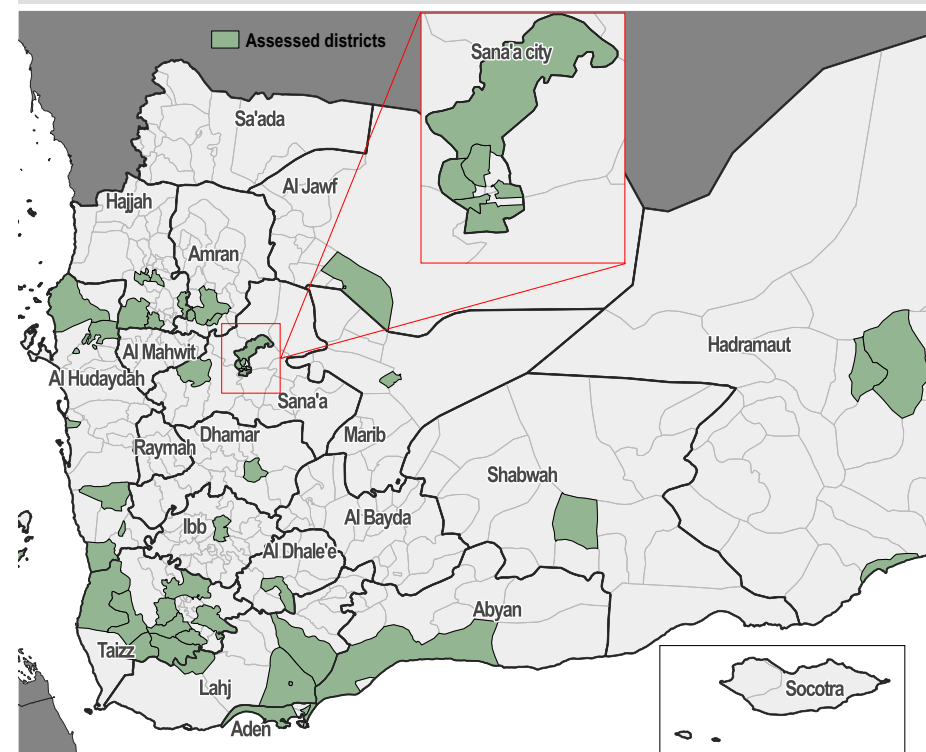
Assessed items	Aug-2020 (R1)	Aug-2020 (R2)	Change (from Aug-2020 R1)
<b>Full SMEB</b>	<b>50935</b>	<b>52987</b>	<b>4.03%</b>
<b>WASH SMEB*</b>	<b>12950</b>	<b>13612</b>	<b>5.1%</b>
Soap (100g)	150	154	2.7%
Laundry powder (100g)	120	125	3.8%
Sanitary napkins (10 Pack)	550	500	-9.1%
Water trucking (1m³)	2500	2700	8.0%
Petrol (1L)	335	340	1.5%
Diesel (1L)	400	420	5.0%
Bottled water (0.75L)	150	150	0.0%
Treated water (10L)	100	100	0.0%
Bleach (1L)	700	700	0.0%
Cooking gas (1cylinder)	4000	4000	0.0%
<b>Food SMEB^</b>	<b>37985</b>	<b>39375</b>	<b>3.6%</b>
Wheat flour (1 kg)	308	312	1.3%
Rice (1 kg)	775	700	-9.7%
Dry kidney beans (1 kg)	700	800	14.3%
Canned kidney beans (1 15oz can)	300	300	0.0%
Lentils (1 kg)	659	700	6.2%
Vegetable oil (1L)	845	850	0.6%
Sugar (1 kg)	410	430	4.9%
Salt (1 kg)	100	100	0.0%
Potatoes (1 kg)	500	400	-20.0%
Onions (1 kg)	500	500	0.0%

\*Contains soap (1.05 Kg), laundry powder (2 Kg), sanitary napkins (20 units), and water (3.15 m³)

^ Contains wheat flour (75 kg), dry kidney beans (10 kg), vegetable oil (8 liters), sugar (2.5 kg), iodized salt (1kg)

### KEY FINDINGS

- The reported number of open businesses within a 2 minute walk from KIs' stalls increased compared to last round.
- Sana'a city has recorded the highest cost of a cubic meter of water trucking compared to other assessed governorates, causing an increase in the WASH SMEB cost in the governorate.
- Price inflation remains the most commonly reported economic issue when obtaining fuel, WASH, food items, and water trucking services.
- The food SMEB cost was found to have increased by 3.6% since the first round of data collection in August, and the WASH SMEB cost also increased by 5.1%, contributing to a 4.03% increase in the overall SMEB cost.
- The proportion of vendor KIs reporting being able to absorb a 50% and 100% increase in demand for food items has dropped considerably.
- Exchange rates seemingly continued to differ across the country: rates under 600 Yemeni Riyals (YER) to one US dollar (USD) were reported in Al Hudaydah and Ibb. Meanwhile, the highest exchange rates were reported in Aden, Lahj, Abyan and Shabwah.



### Exchange Rate

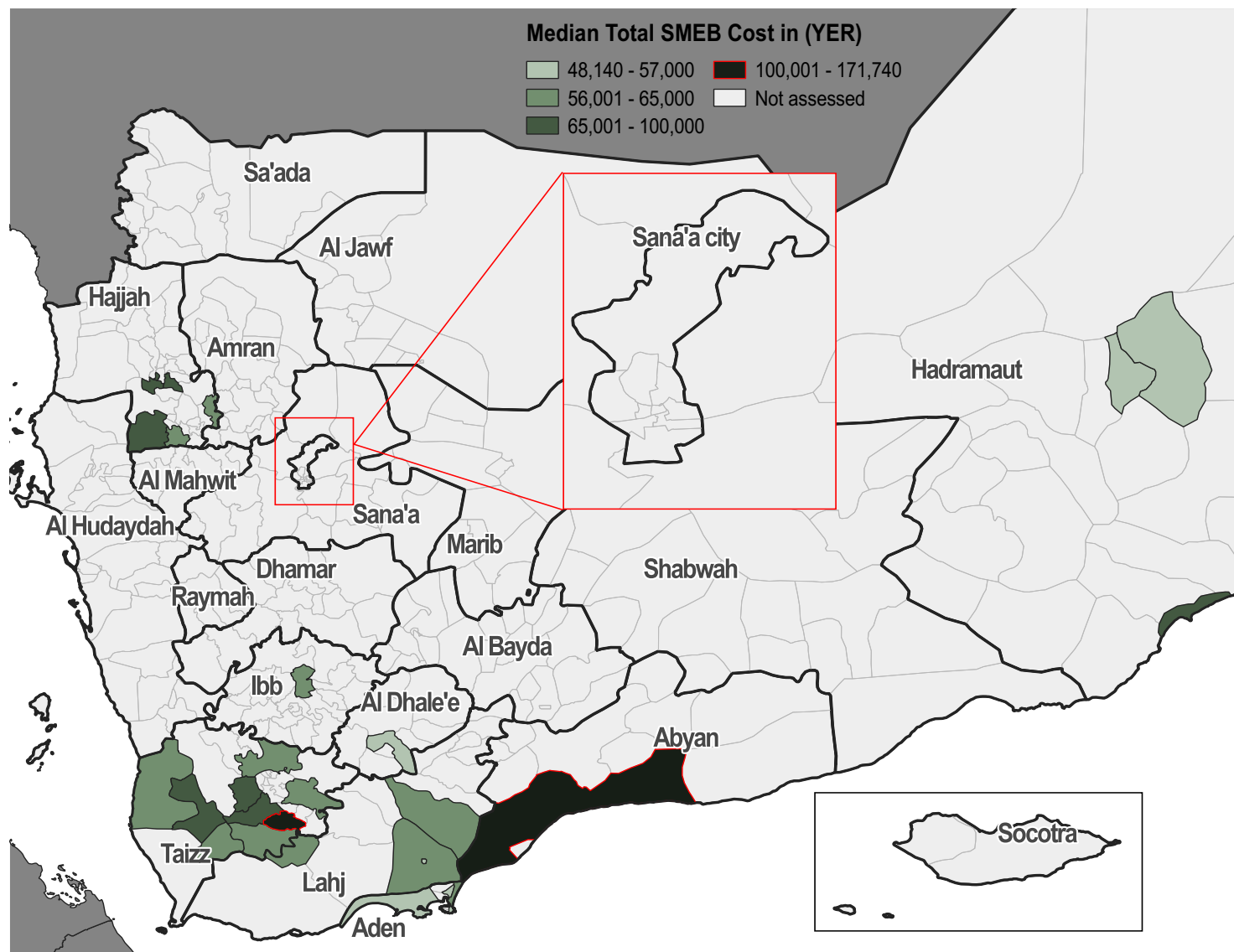
**250**  
▲ 0.0%  
**USD/YER**  
Official

**602**  
▲ 1%  
**USD/YER**  
Parallel market\*

**598**  
**USD/YER**  
Previous Parallel Market  
Rate July (R2) 2020

**786**  
**USD/YER**  
New currency market

## Total SMEB prices (23-30 August)\*,^



\*Total SMEB cost in the legend represents the calculated food basket cost with dry beans.

^Red outlines over districts indicate the districts for which outliers were recorded.

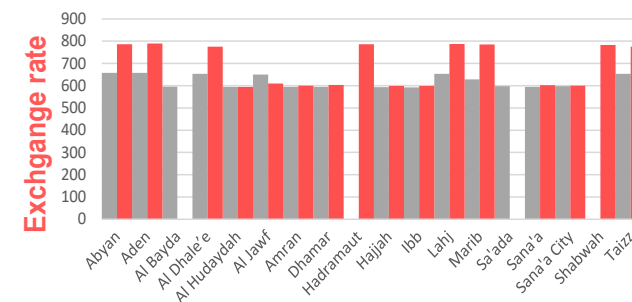
## Exchange rate (YER/USD)\*

Governorate	March 2020 <sup>^</sup>	August (Round 1)	August (Round 2)
Abyan	658 (658)	775 (775)	786 (786)
Aden	658 (658)	775 (770)	790 (790)
Al Bayda	596 (596)	NA	NA (789)
Al Dhale'e	654 (656)	765 (775)	775 (775)
Al Hudaydah	595 (597)	595 (593)	595
Al Jawf	650	600	610
Amran	595	600	600
Dhamar	595	603	603
Hadramaut	NA	768	786
Hajjah	594	597	600
Ibb	592	598	599
Lahj	654 (654)	(768)	787 (787)
Marib	628	770	785
Sa'ada	598	NA	NA
Sana'a	595	599	602
Sana'a City	598 (628)	595	600
Shabwah	NA	755 (767)	783 (783)
Taizz	654 (656)	765 (770)	775 (770)

\*Exchange rate for the new currency released last year is in parenthesis.

^March was chosen as a baseline to assess the effect of COVID-19 on exchange rates.

## Exchange rate in March and August 2020 (YER/USD)\*



## Governorates

■ March exchange rates  
■ August exchange rates

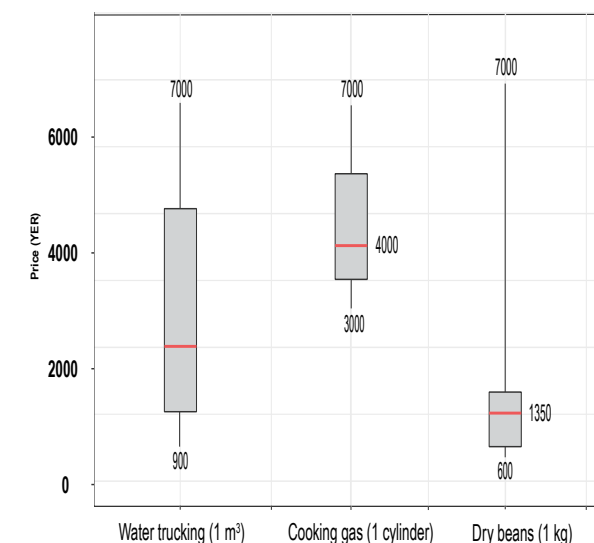
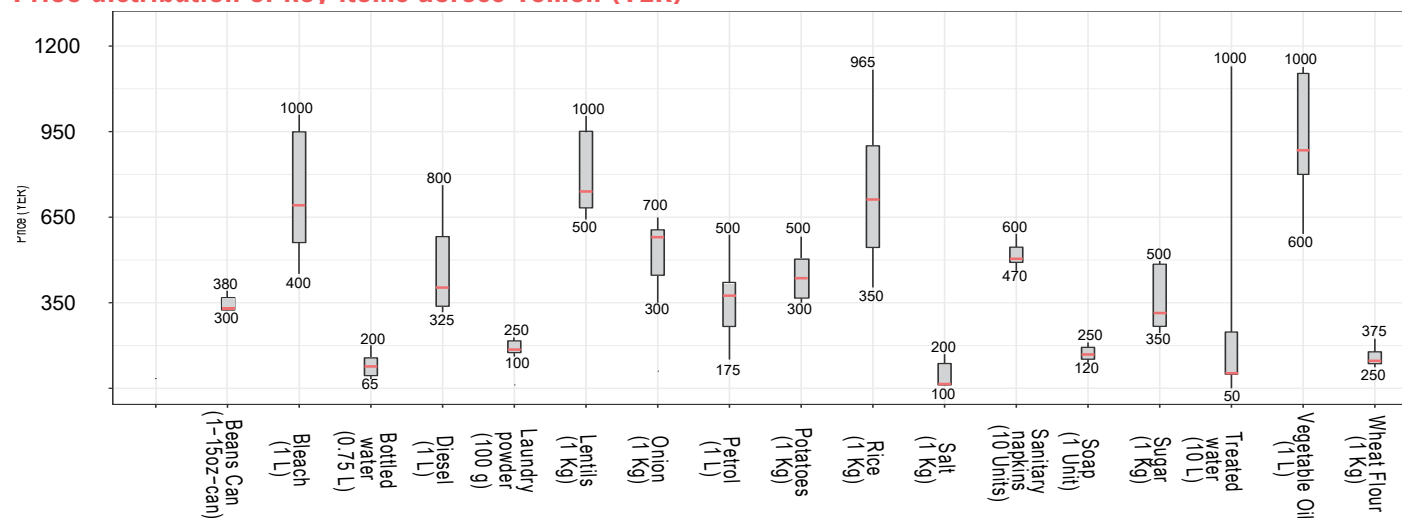
\*Governorate labels point to two bars indicating March base values and August round 2 values. Gaps between bars indicates that no exchange rate value was recorded in this governorate.

# Price per key item, per governorate (YER)\*

Governorate	Petrol (1L)	Diesel (1L)	Cooking gas (1 cylinder)	Bottled water (0.75L)	Treated water (10L)	Bleach (1L)	Soap (1 Unit)	Laundry powder (100g)	Sanitary napkins (10)	Water trucking (1m³)	WASH SMEB	Wheat flour (1Kg)	Rice (1Kg)	Beans dry (1Kg)	Beans cans (1 15oz can)	Lentils (1 Kg)	Vegetable oil (1L)	Sugar (1Kg)	Salt (1Kg)	Potatoes (1Kg)	Onions (1 Kg)	Food SMEB (dry beans)
Abyan	335	420	3500	100	100	1000	158	100	600	2000	11159	350	800	7000	310	NA	800	500	100	400	700	104000
Aden	330	420	5500	200	100	825	150	100	625	2200	11755	350	965	800	400	900	1000	500	100	400	500	43600
Al Dhale'e	340	410	3500	100	100	950	200	100	500	3000	14550	300	450	600	NA	600	1000	500	100	500	600	37850
Al Hudaydah	450	450	3900	150	50	460	140	130	470	2000	11310	280	700	NA	300	700	700	400	100	400	450	NA
Al Jawf	450	425	NA	200	1000	560	250	130	650	1300	10620	NA	NA	NA	NA	NA	NA	NA	NA	NA	NA	NA
Amran	295	345	NA	120	100	700	150	120	500	900	7810	300	450	NA	300	600	880	350	150	400	450	NA
Dhamar	295	345	NA	150	500	720	150	120	550	1000	8225	NA	NA	NA	NA	NA	NA	NA	NA	NA	NA	NA
Hadramaut	335	325	3000	100	540	730	183	150	600	4000	18722	320	580	725	300	775	755	420	200	550	500	38500
Hajjah	500	500	7000	150	100	800	150	110	500	2000	11075	250	800	5000	350	750	850	350	100	450	475	76525
Ibb	295	345	5000	150	100	650	200	150	613	3000	15775	375	400	800	300	650	600	450	125	300	350	42175
Lahj	330	425	5650	200	100	850	200	125	575	1600	10780	330	945	1400	400	1000	1000	450	150	325	400	48025
Marib	175	450	NA	65	50	680	165	135	500	1000	8583	NA	NA	NA	NA	NA	NA	NA	NA	NA	NA	NA
Sana'a	NA	NA	4000	120	100	725	120	105	450	1100	7715	300	350	NA	300	500	900	400	200	375	400	NA
Sana'a City	295	345	3700	130	125	400	140	115	500	7000	26820	270	400	NA	300	575	791	350	100	300	300	NA
Shabwah	390	400	3500	100	1000	800	180	250	500	3000	17340	300	690	NA	350	1000	750	370	117	500	500	NA
Taizz	390	430	4000	159	100	800	150	150	600	3000	15225	350	478.5	1350	350	600	919	450	100	400	500	48327
National median price	340	420	4000	150	100	700	154	125	500	2700	13612	312	700	800	300	700	850	430	100	400	500	39375

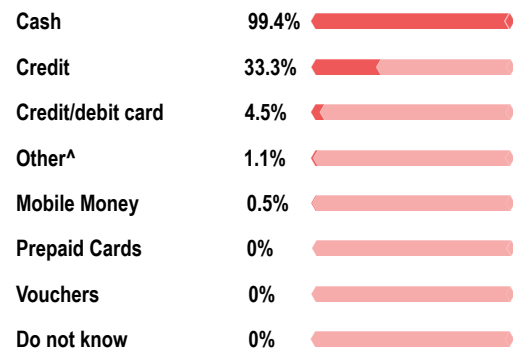
\*Darker color strokes indicate high outliers for each commodity, lighter color strokes indicate the low outliers of each commodity.

## Price distribution of key items across Yemen (YER)



# WASH SMEB\*

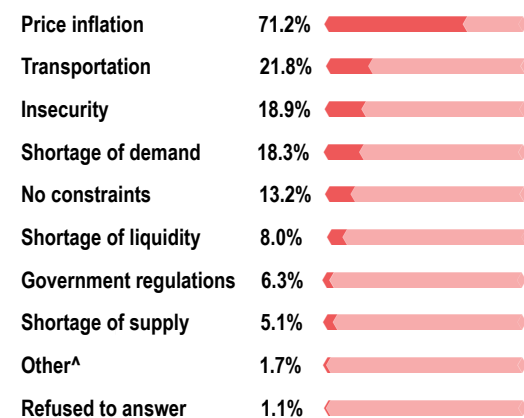
## WASH vendor KIs reported accepting the following payment modalities\*



\*Values do not add up to 100% as vendor KIs were allowed to select multiple options.

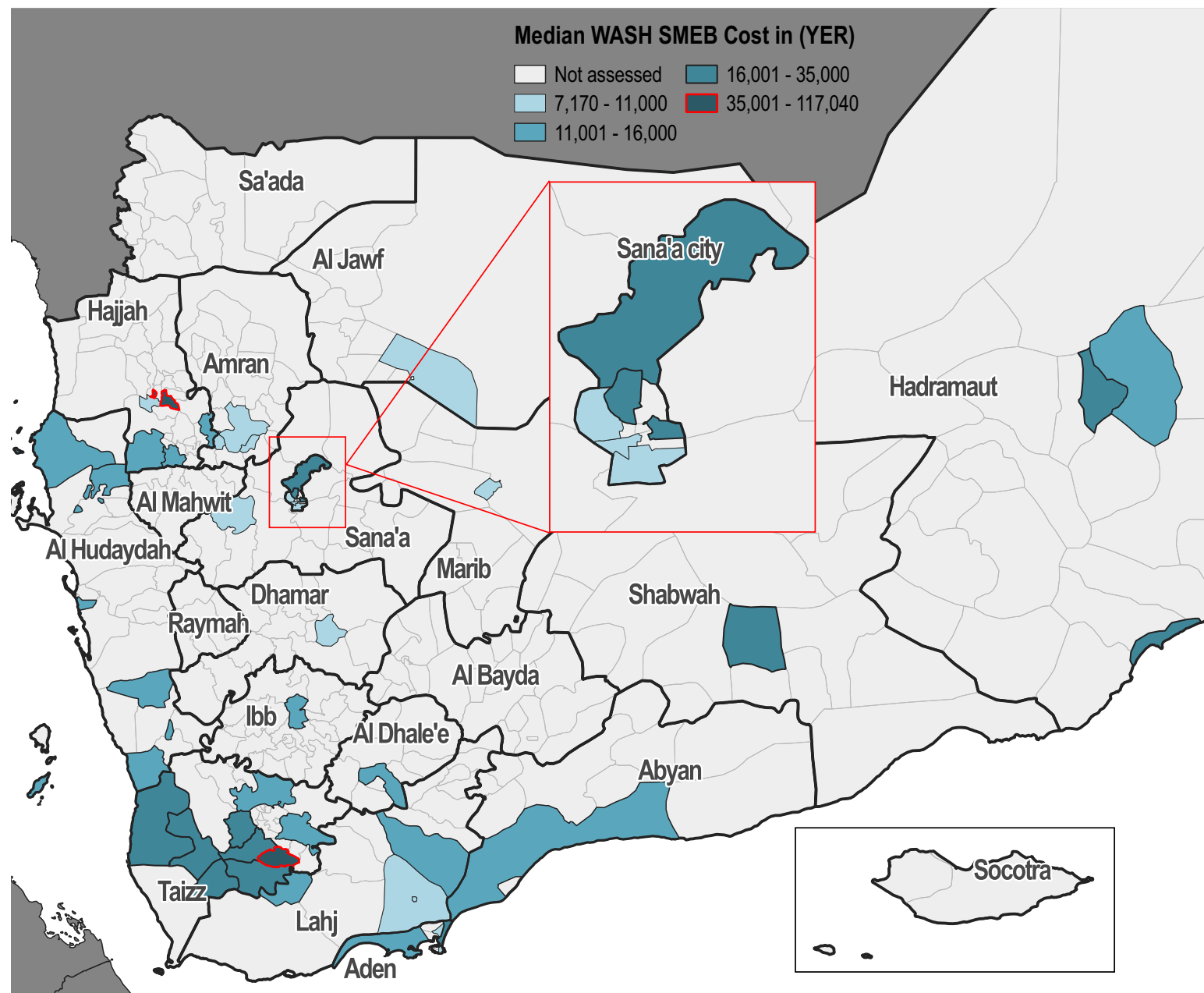
^Includes bank transfers.

## Most commonly reported constraints, by % of WASH vendor KIs\*



\*Values do not add up to 100% as vendor KIs were allowed to select multiple options.

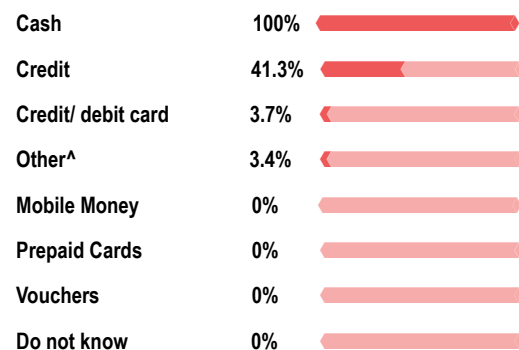
^Includes increased currency fluctuations, loss of vendors in the area, and additional fees.



\*Red outlines over Al Mahabishah district indicate the districts for which outliers were depicted.

# Food SMEB\*

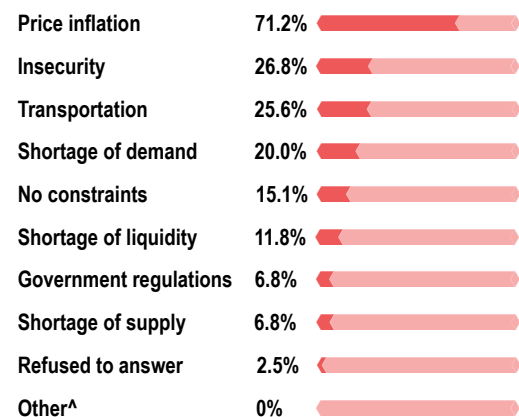
## Food vendor KIs reporting accepting the following payment modalities\*



\*Values do not add up to 100% as vendor KIs were allowed to select multiple options.

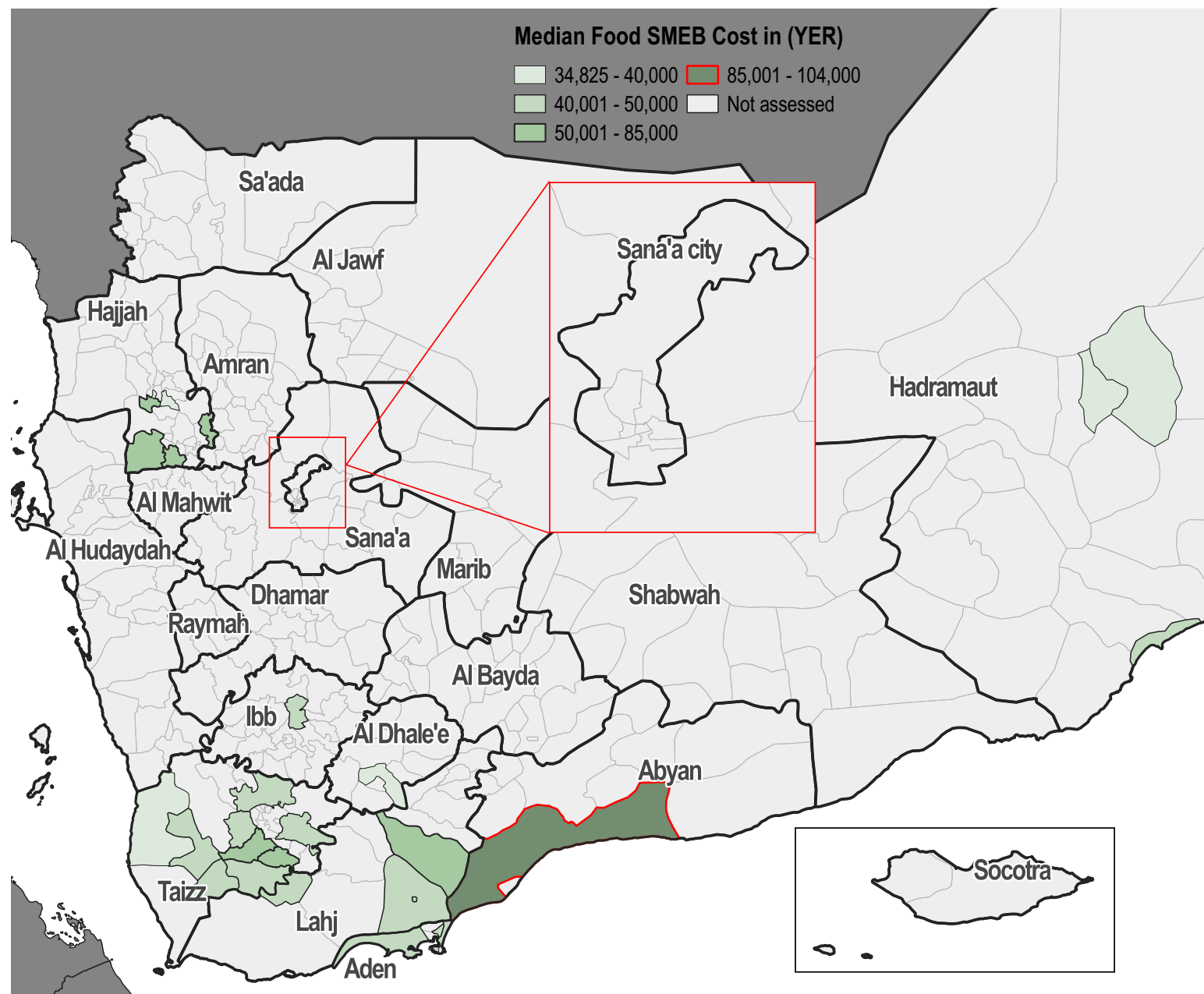
^Includes bank transfers.

## Most commonly reported constraints, by % of food vendor KIs\*



\*Values do not add up to 100% as vendor KIs were allowed to select multiple options.

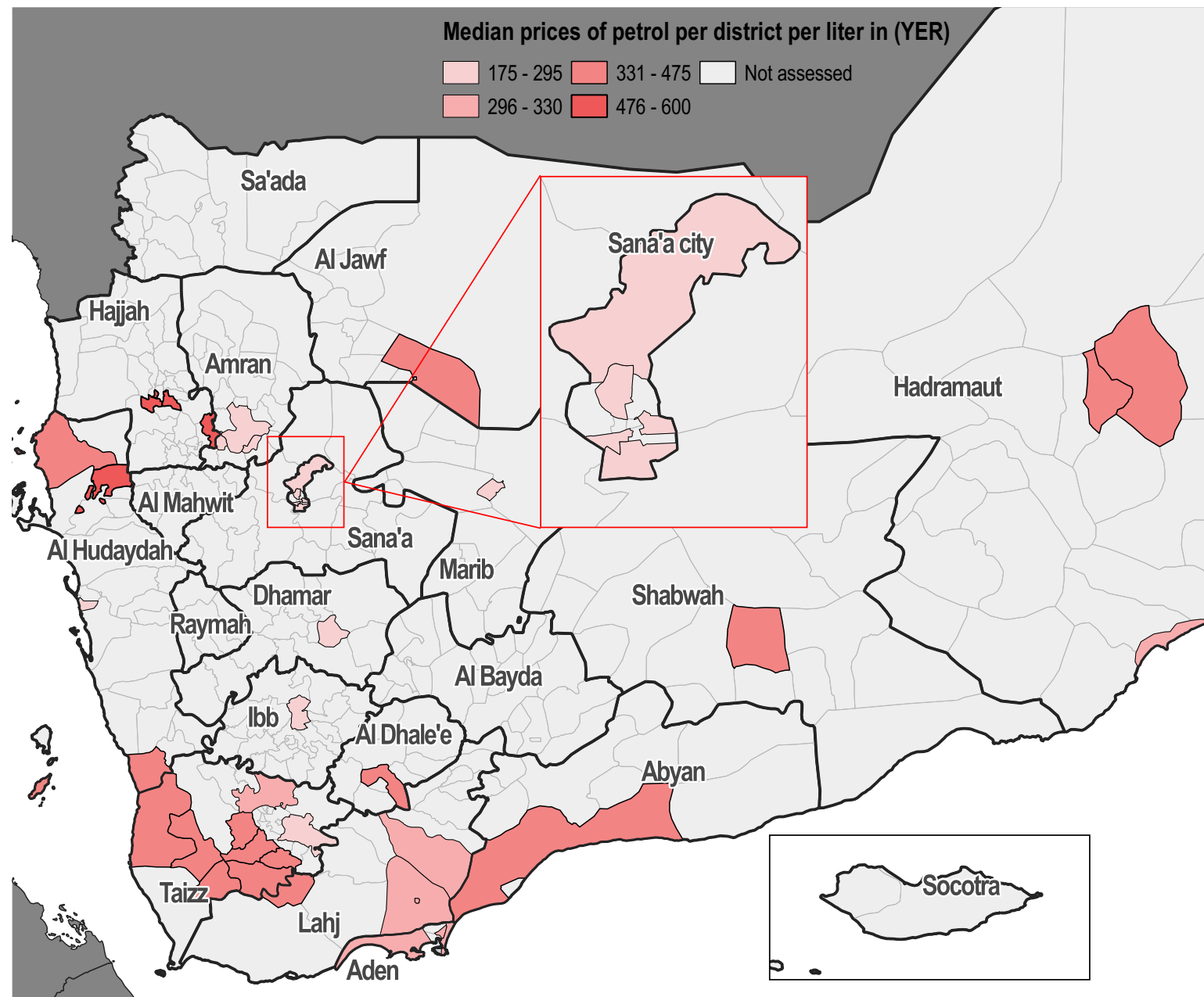
^Usually includes increased currency fluctuations, loss of vendors in the area, and additional fees.



\*Total SMEB cost in the legend represents the calculated food basket cost with dry beans.



# Fuel



## Fuel vendor KIs reported accepting the following payment modalities\*

Cash	99.3%	<div></div>
Credit	18.9%	<div></div>
Vouchers	1.8%	<div></div>
Credit/ debit card	1.2%	<div></div>
Mobile money	0.6%	<div></div>
Do not know	0.6%	<div></div>
Prepaid cards	0%	<div></div>
Other	0%	<div></div>

\*Values do not add up to 100% as vendor KIs were allowed to select multiple options.

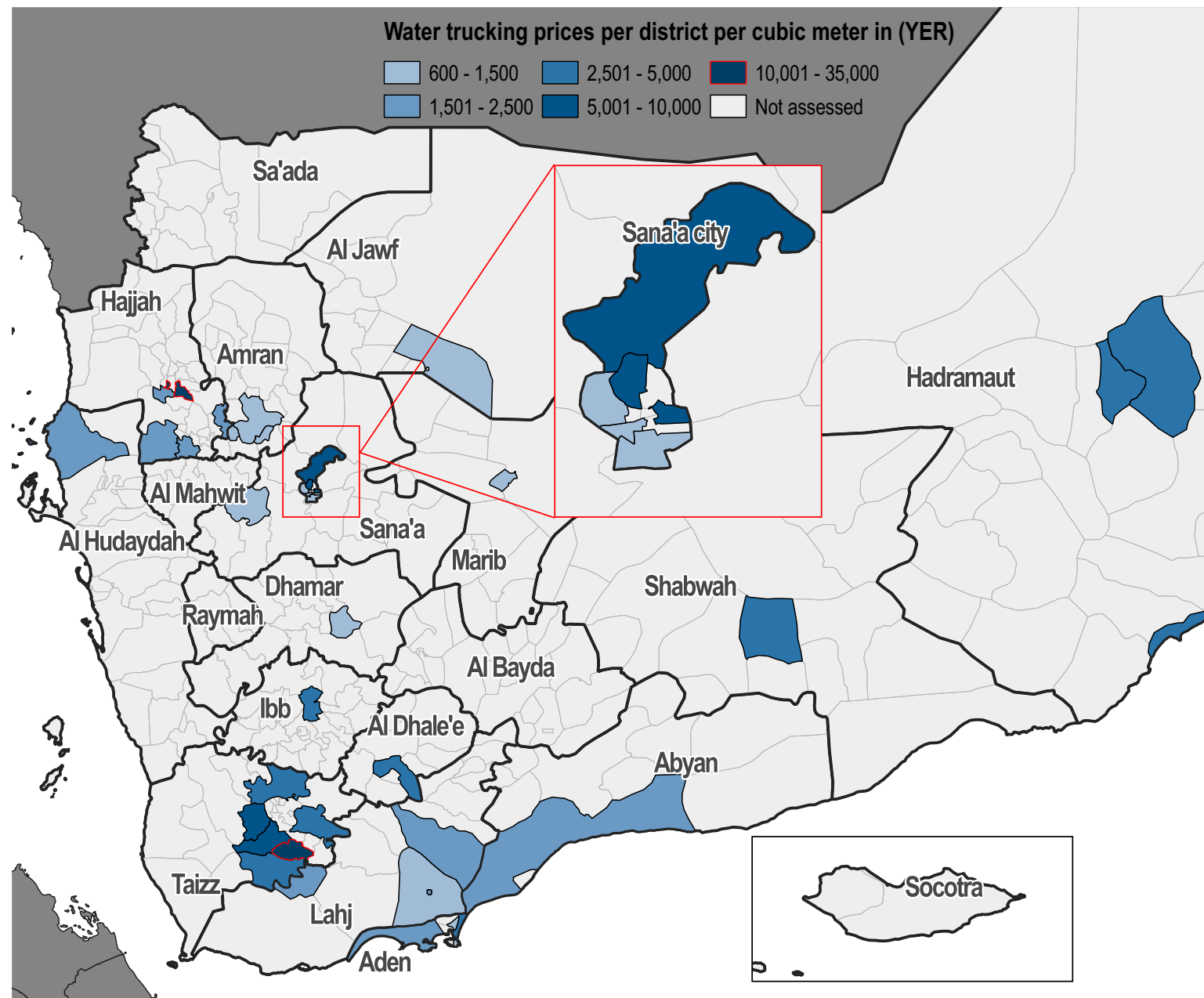
## Most commonly reported constraints, by % of fuel vendor KIs\*

Price inflation	58.2%	<div></div>
Shortage of supply	33.5%	<div></div>
Transportation	31.0%	<div></div>
Insecurity	24.0%	<div></div>
Shortage of demand	11.3%	<div></div>
No constraints	8.8%	<div></div>
Shortage of liquidity	8.2%	<div></div>
Refused to answer	5.9%	<div></div>
Government regulations	6.9%	<div></div>
Other^	3.1%	<div></div>

\*Values do not add up to 100% as vendor KIs were allowed to select multiple options.

^Includes increased currency fluctuations, loss of vendors in the area, and additional fees.

# Water Trucking



## Water trucking vendor KIs reported accepting the following payment modalities\*

Cash	100%	<div></div>
Credit	14.4%	<div></div>
Other^	0.97%	<div></div>
Mobile money	0.9%	<div></div>
Credit/ debit card	0%	<div></div>
Prepaid cards	0%	<div></div>
Vouchers	0%	<div></div>
Do not know	0%	<div></div>

\*Values do not add up to 100% as vendor KIs were allowed to select multiple options.

^Includes bank transfers.

## Most commonly reported constraints, by % of water trucking vendor KIs\*

Price inflation	59.4%	<div></div>
Shortage of demand	33.6%	<div></div>
Transportation	28.7%	<div></div>
Other^	16.8%	<div></div>
Insecurity	13.8%	<div></div>
No constraints	9.9%	<div></div>
Shortage of supply	6.9%	<div></div>
Government regulations	5.9%	<div></div>
Refused to answer	3.9%	<div></div>
Shortage of liquidity	2.9%	<div></div>

\*Values do not add up to 100% as vendor KIs were allowed to select multiple options.

^Includes increased currency fluctuations, loss of vendors in the area, and additional fees.

# SUPPLY CHAIN OVERVIEW FOR YEMEN

## Median price of goods originating from Aden and al Hudaydah

Vendor KIs were asked about the origin of various products sold in their stores. The two main ports of origin for these products were Aden and al Hudaydah. The table below shows the median price of goods originating from these two ports.

Item	Aden	Al Hudaydah
Petrol (1L)	375 YER	475 YER
Diesel (1L)	422.5 YER	450 YER
Cooking Gas (1 cylinder)	5500 YER	5250 YER
Soap (1 unit)	159 YER	150 YER
Laundry Powder (100g)	127 YER	125 YER
Sanitary Napkins (10 units)	632 YER	470 YER
Wheat Flour (1kg)	320 YER	280 YER
Beans Dry (10kg)	1200 YER	NA
Beans Can (15oz can)	354 YER	300 YER
Vegetable Oil (1L)	919 YER	700 YER
Sugar (1kg)	450 YER	400 YER
Salt (1kg)	100 YER	100 YER
Potatoes (1kg)	400 YER	400 YER
Onions (1kg)	500 YER	450 YER
Bleach (1L)	870 YER	465 YER
Bottled water (0.75L)	150 YER	155 YER
Treated water (10L)	200 YER	50 YER
Water trucking (1m <sup>3</sup> )	2000 YER	2000 YER
Rice (1kg)	930 YER	800 YER
Lentils (1kg)	800 YER	700 YER

## Average restocking time (days)\*^

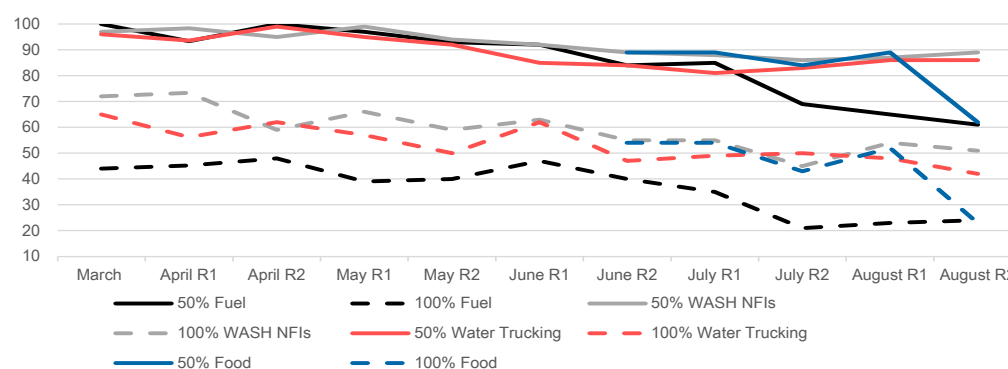
Governorate	Fuel Items	WASH Items	Food Items
Abyan	5(10)	3(9)	4(6)
Aden	4(4)	1(2)	1(2)
Al Dhale'e	2(4)	1(2)	2(2)
Al Hudaydah	5(6)	8(6)	7(5)
Al Jawf	10(8)	4(4)	NA(NA)
Amran	8(13)	15(14)	5(2)
Dhamar	7(7)	3(2)	NA(NA)
Hadramaut	4(3)	4(5)	3(3)
Hajjah	4(7)	9(4)	7(4)
Ibb	9(4)	7(6)	5(4)
Lahj	7(7)	8(8)	7(7)
Marib	10(6)	16(22)	NA(NA)
Sana'a	5(3)	2(2)	2(2)

\*Previous average restocking time (July 2nd round 2020) in days between brackets.

^N/A indicates that the specific question was not answered by the KIs.

## Vendor capacity to respond to a sudden increase in demand: Proportion of vendors able to absorb a 50% and 100% increase in demand for key items

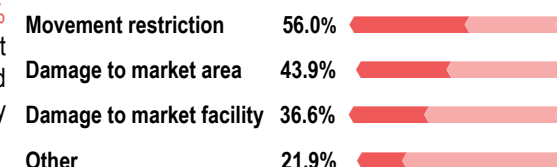
To understand vendor capacity to cope with sudden increases in the demand for water trucking, fuel, and WASH items, vendor KIs were asked if they would be able to increase their stock by 50% and 100% respectively. The proportion of vendors reporting being able to absorb a 50% or 100% increase in demand for food items fell considerably in August.



## Market-related concerns affecting vendor capacity to conduct business

When asked if they faced any market-related concerns that would prevent them from conducting their business, **85% (236/277)** of the vendor KIs responded that they did not face any concerns compared to **15% (41/277)** who responded that they did.

### Most commonly reported market-related concerns\*



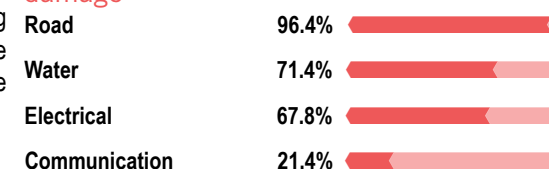
\*Values do not add up to 100% as vendor KIs were allowed to select multiple options.

^Other includes: Lack of oil derivatives and high exchange US dollar to Yemeni rial rate.

## Damaged infrastructure affecting vendor capacity to conduct business

The **15%** of vendor KIs who reported "damage to the market area" and "damage to the market facility" as concerns affecting their capacity to run their businesses were then asked which type of infrastructure was most damaged.

### Most commonly reported infrastructure damage\*



\*Values do not add up to 100% as vendor KIs were allowed to select multiple options.



# DISTRICTS COVERED

Governorate	District	Petrol price	Water Trucking	SMEB WASH	SMEB Food	SMEB Total	Fuel: Supplier Governorate	Fuel: Total number of respondents^	WASH: Supplier Governorate	WASH: Total number of respondents^	Food: Supplier governorate	Food: Total number of respondents^
Abyan	Khanfir	335	2000	11159	104000	115159	Aden	3/3	Abyan	4/5	Abyan	4/5
Aden	Al Buraieqeh	330	2400	12619	38850	48130	Aden	4/4	Aden	5/5	Aden	5/5
Aden	Ash Shaikh Outhman	330	1200	9155	47350	56505	Aden	4/4	Aden	4/4	Aden	4/4
Aden	Craitir	330	1200	9280	44000	56619	Aden	3/3	Aden	3/3	Aden	3/3
Aden	Khur Maksar	330	5000	20525	42675	63200	Aden	4/4	Aden	4/4	Aden	4/4
Al Dhale'e	Ad Dhale'e	340	3000	14550	37850	52400	Aden	4/5	Al Dhale'e	5/5	Al Dhale'e	5/5
Al Hudaydah	Al Hawak	295	NA	11265	NA	NA	Al Hudaydah	3/3	Al Hudaydah	3/3	Al Hudaydah	3/3
Al Hudaydah	Al Khawkhah	375	NA	11875	NA	NA	Aden	3/3	Aden	3/3	Aden	3/3
Al Hudaydah	Al Qanawis	600	NA	11685	NA	NA	Al Hudaydah	4/4	Al Hudaydah	9/9	Al Hudaydah	9/9
Al Hudaydah	Alluheyah	475	2000	11117.5	NA	NA	Al Hudaydah	6/6	Al Hudaydah	6/6	Al Hudaydah	6/6
Al Hudaydah	Zabid	NA	NA	11185	NA	NA	Al Hudaydah	9/9	Al Hudaydah	9/9	Al Hudaydah	9/9
Al Jawf	Al Hazm	450	1300	10620	NA	NA	Marib	3/3	Sana'a	3/3	NA	NA
Amran	Amran	295	900	7810	NA	NA	Al Hudaydah	3/4	Sana'a	3/5	Sana'a	2/3
Amran	Jabal Iyal Yazid	295	1100	8490	NA	NA	Al Hudaydah	2/2	Amran	2/2	Amran	1/1
Dhamar	Dhamar City	295	1000	8225	NA	NA	Dhamar	3/3	Dhamar	3/3	NA	NA
Hadramaut	Al Mukalla City	320	5000	22375	42690	65065	Hadramaut	3/3	Hadramaut	3/3	Hadramaut	3/3
Hadramaut	Sayun	335	4000	18721.5	38510	53080	Hadramaut	3/3	Hadramaut	3/3	Hadramaut	3/3
Hadramaut	Tarim	335	3000	14570	36805	55526.5	Hadramaut	3/3	Hadramaut	3/3	Hadramaut	3/3
Hajjah	Al Mahabishah	500	18000	61580	53275	64350	Hajjah	2/2	Hajjah	3/3	Sana'a	2/3
Hajjah	Ash Shaghadirah	NA	2000	11620	81189	92169	Al Hudaydah	1/2	Al Hudaydah	2/2	Sana'a	1/2
Hajjah	Bani Qa'is	NA	2500	13040	34825	96405	Al Hudaydah	2/2	Al Hudaydah	2/2	Al Hudaydah	2/2
Hajjah	Kuhlan Affar	500	2000	11075	52150	63770	Hajjah	4/4	Amran	4/4	Amran	4/4
Hajjah	Qafil Shamer	500	2000	10980	52150	65190	Hajjah	2/2	Hajjah	3/3	Hajjah	3/3
Ibb	Al Makhadir	295	3000	15775	42175	57950	Ibb	1/1	Ibb	4/4	Ibb	4/4
Lahj	Al Hawtah	330	1600	10620	49800	59100	Aden	3/3	Aden	3/3	Aden	3/3
Lahj	Al Maqatirah	350	2000	12060	45554	56174	Aden	3/3	Aden	3/3	Aden	3/3
Lahj	Al Milah	330	2000	11665	53300	64965	Aden	1/1	Aden	1/2	Aden	3/4
Lahj	Tuban	330	1000	9300	45975	58035	Aden	4/4	Lahj	3/4	Lahj	3/4
Marib	Marib City	175	1000	8582.5	NA	NA	Marib	3/3	Marib	3/3	NA	NA
Sana'a	Al Haymah Ad Dakhiliyah	NA	1100	7715	NA	NA	Al Hudaydah	1/1	Sana'a city	2/2	Sana'a city	2/2
Sana'a City	Al Wahdah	295	650	7222.5	NA	NA	Al Hudaydah	1/1	Sana'a city	2/2	Sana'a city	2/2
Sana'a City	As Sabain	295	1200	8224	NA	NA	Sana'a city	3/3	Sana'a city	3/3	NA	NA
Sana'a City	Ath'thaorah	295	7000	27025	NA	NA	Sana'a	3/3	Sana'a	3/3	Sana'a	2/2
Sana'a City	Az'zal	295	9000	33010	NA	NA	Sana'a	3/3	Sana'a	3/3	Sana'a	3/3
Sana'a City	Bani Al Harith	295	9000	32610	NA	NA	Sana'a	3/3	Sana'a	3/3	Sana'a	3/3
Sana'a City	Ma'ain	NA	600	7170	NA	NA	NA	NA	Sana'a city	2/2	Sana'a city	1/1
Shabwah	Ataq	390	3000	17340	NA	NA	Hadramaut	3/3	Shabwah	2/3	Hadramaut	3/3
Taizz	Al Mukha	375	NA	20143.75	46200	61601	Aden	6/6	Aden	6/6	Aden	6/6
Taizz	Al Ma'afer	400	6000	24675	44325	59959.5	Aden	4/5	Aden	3/3	Aden	3/5
Taizz	Al Mawasit	425	35000	117040	48000	72075	Lahj	3/4	Taizz	4/4	Taizz	2/4
Taizz	Al Wazi'iyah	410	NA	20343.75	39587.5	59731.25	Aden	3/3	Aden	3/3	Aden	3/3
Taizz	Ash Shamayatayn	390	3250	16212.5	48500	64712.5	Aden	4/6	Aden	4/6	Aden	4/6

## DISTRICTS COVERED (CONT.)

Governorate	District	Petrol price	Water Trucking	SMEB WASH	SMEB Food	SMEB Total	Fuel: Supplier Governorate	Fuel: Total number of respondents^	WASH: Supplier Governorate	WASH: Total number of respondents^	Food: Supplier governorate	Food: Total number of respondents^
Taizz	At Ta'iziyah	297.5	3000	15634.5	50550	75225	Taizz	2/3	Taizz	4/4	Taizz	4/4
Taizz	Dimnat Khadir	295	3000	15401	45800	66343.75	Taizz	3/3	Taizz	4/4	Taizz	4/4
Taizz	Jabal Habashy	375	6000	24075	44350	64693.75	Lahj	8/8	Taizz	4/7	Lahj	7/7
Taizz	Mawza	400	NA	20543.75	54700	171740	Aden	3/3	Aden	3/3	Aden	3/3

^If the number is 4/10 (e.g.), this indicates that 10 vendor KIs were interviewed, and of this, 4 answered the supply question.

The supplier governorate indicates the most prevalent answer. In the case of a tie, both governorates are shown.

\*The table shows SMEB values and supply chains inside the same governorate and towards other governorates. Districts without a main supplier are those districts where vendor KIs could not identify the origin of the items they sold.

^Do Not Know was a potential option that could be selected by respondents.

NA indicates that, in the specific location, the data was reported to be unavailable.

Outliers are the high or low prices (3 standard deviations away from the median price).

The food SMEB contains 75 kg of wheat flour, 10 kg of beans (kidney), 8 L of vegetable oil, 2.5 kg of sugar, and 1 kg iodized salt.

The WASH SMEB contains 1050g of soap, 2kg of laundry powder, 20 units of sanitary napkins, 3.13 m3 water trucking.

# APPENDIX

## What is the intersectoral or cash and market working group?

With the emergence of the conflict in 2014, humanitarian actors in Yemen began using cash and vouchers as a response tool to meet the immediate needs of the Yemeni population. The CMWVG was established to provide a platform for discussion and setting standards/recommendations on cash and market-based responses (inclusive of cash and vouchers) for the cash actors in Yemen. The JMMI was developed by the CMWVG, the WASH Cluster, and REACH in order to harmonize price monitoring amongst WASH actors in Yemen.

## Additional information on methodology

To be assessed by the JMMI, markets must be either a single permanent market, or a local community where multiple commercial areas are located in close proximity to one another. When possible, markets/shops are selected within a single geographical location, where there is at least one wholesaler operating in the market.

Participating organisations train their enumerators on the JMMI methodology and data collection tools using standard training materials developed by REACH. Each month, enumerators conduct KI interviews with market vendors to collect three price quotations for each item from the same market in each district. In addition to price levels, vendors are asked about the location of their supplier, the number of days it takes to restock the items, and the constraints they are facing in purchasing and selling the items in question. Additional questions are included for water trucking, to gauge the impact of delivery distance upon price level.

Following data collection, REACH compiles and cleans all partner data, normalising prices and cross-checking outliers. The cleaned data is then analysed by commodity and by governorate. To illustrate local variations in prices and availability, REACH uses the collected data to map the price of each type of item in each district. REACH also calculates the WASH SMEB (Survival Minimum Expenditure Basket), which is composed of four items: soap (1.05 kg), laundry powder (2 kg), sanitary napkins (20 units) and water trucking (3.15 m3). Food SMEB contains 75 kg of wheat flour, 10 kg of beans (kidney), 8 L of vegetable oil, 2.5 kg of sugar, and 1 kg iodized salt.

The cleaned data sets are available on the [REACH Resource Centre](#) and are distributed to all participating partners, as well as to relevant clusters and the broader humanitarian community.

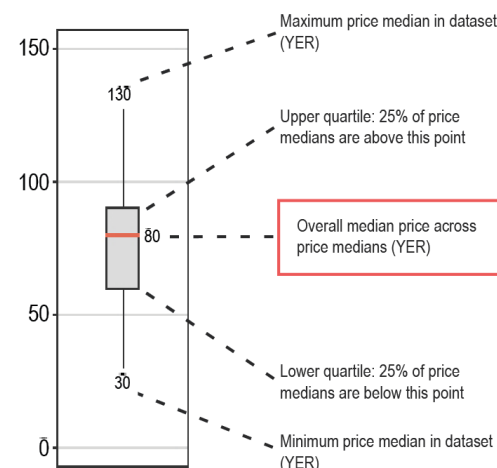
## Limitations

Due to issues of access and security across Yemen, the districts included in the JMMI vary on a monthly basis, and as such there are sometimes a limited number of districts for which trends can be assessed over time. Governorate level data is aggregated from the respective districts assessed in a given month, and so the findings are not representative of individual markets. Finally, the market monitoring process has been coordinated remotely by REACH, which inherently presents some challenges in terms of coordination and follow-up with partners. Participating organisations are therefore requested to adopt harmonised data collection methodologies and tools to ensure that the data uploaded is as accurate as possible.

## Calculation of district and governorate median price

The calculation of the aggregated median price for districts and governorates is done following a stepped approach. Firstly, the median of all the price quotations related to the same market is taken. Secondly, the median quotation from each market is aggregated to calculate the district median. Finally, the median quotation from each district is aggregated to calculate the governorate median. Additionally, district and governorate median prices and percentage change from one month to another are calculated only on data from markets that were assessed in both consecutive months. Therefore, part of the percentage variation should be attributed to changes in monthly coverage when registered.

## How to read a box plot



## ABOUT REACH

REACH is a joint initiative that facilitates the development of information tools and products that enhance the capacity of aid actors to make evidence-based decisions in emergency, recovery and development contexts. By doing so, REACH contributes to ensuring that communities affected by emergencies receive the support they need. All REACH activities are conducted in support to and within the framework of inter-agency aid coordination mechanisms. For more information, please visit our website at [www.reach-initiative.org](http://www.reach-initiative.org), contact us directly at [yemen@reach-initiative.org](mailto:yemen@reach-initiative.org) or follow us on Twitter at [@REACH\\_info](https://twitter.com/REACH_info).

## Participating partners include



## Number of districts assessed per governorate

Governorate	August Round 1	August Round 2
Abyan	1	1
Aden	4	4
Al Dhale'e	1	1
Al Hudaydah	5	5
Al Jawf	1	1
Amran	2	2
Dhamar	1	1
Hadramaut	3	3
Hajjah	8	5
Ibb	1	1
Lahj	4	4
Marib	1	1
Sana'a	1	1
Sana'a City	6	6
Shabwah	1	1
Taizz	8	9