



# Adamawa and Borno - Protection

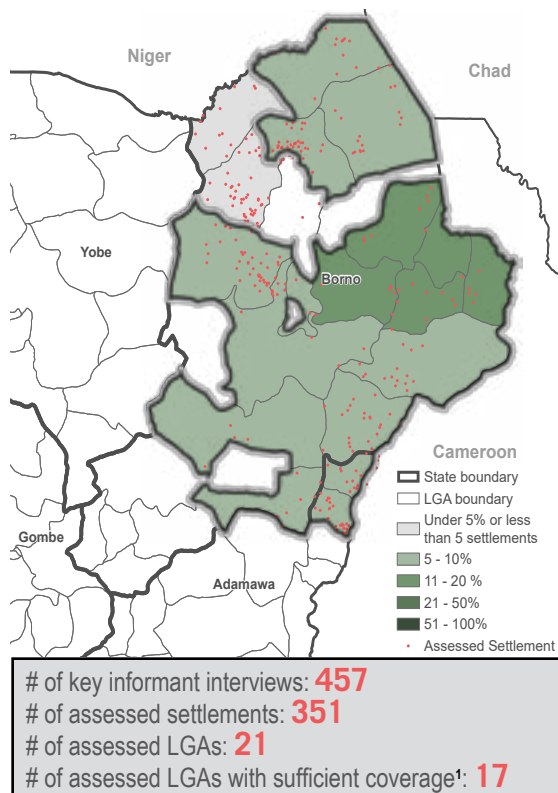
## Assessment of Hard-to-Reach Areas in Northeast Nigeria

February 2021

### Introduction

The continuation of conflict in Northeast Nigeria has created a complex humanitarian crisis, rendering sections of Borno and Adamawa states as hard to reach. To address information gaps facing the humanitarian response and inform humanitarian actors on the demographics of households in hard-to-reach areas of Northeast Nigeria, as well as to identify their needs, access to services and movement intentions, REACH has been conducting monthly assessments of hard-to-reach areas in Northeast Nigeria since November 2018.

#### Proportion of settlements assessed, February 2021



### Methodology

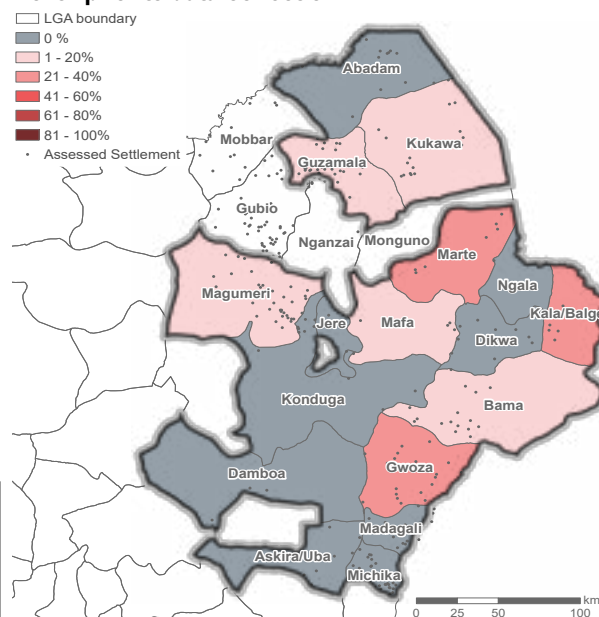
Using the Area of Knowledge (AoK) methodology, REACH remotely monitors the situation in hard-to-reach areas through monthly multi-sector interviews in accessible Local Government Area (LGA) capitals with key informants (KIs) who are either (1) newly arrived internally displaced persons (IDPs) who have left a hard-to-reach settlement in the last month or (2) KIs who have had contact with someone living or having been in a hard-to-reach settlement in the last month (traders, migrants, family members, etc.).

If not stated otherwise, the recall period for each question is set to one month prior to the last information the KI has had from the hard-to-reach area. Selected KIs are purposively sampled and are interviewed on settlement-wide circumstances in hard-to-reach areas, rather than their individual experiences. Responses from KIs reporting on the same settlement are then aggregated to the settlement level. The most common response provided by the greatest number of KIs is reported for each settlement. When no most common response could be identified, the response is considered as 'no consensus'. While included in the calculations, the percentage of settlements for which no consensus was reached is not displayed in the results below.

Results presented in this factsheet, unless otherwise specified, represent the proportion of settlements assessed within an LGA. Findings are only reported on LGAs where at least 5% of populated settlements and at least 5 settlements in the respective LGA have been assessed. **The findings presented are indicative of broader trends in assessed settlements in February 2021, and are not statistically generalisable².** Due to precautions related to the COVID-19 outbreak, data was collected remotely through phone based interviews with assistance from local stakeholders. Data collection took place from February 1<sup>st</sup> to February 26<sup>th</sup>.

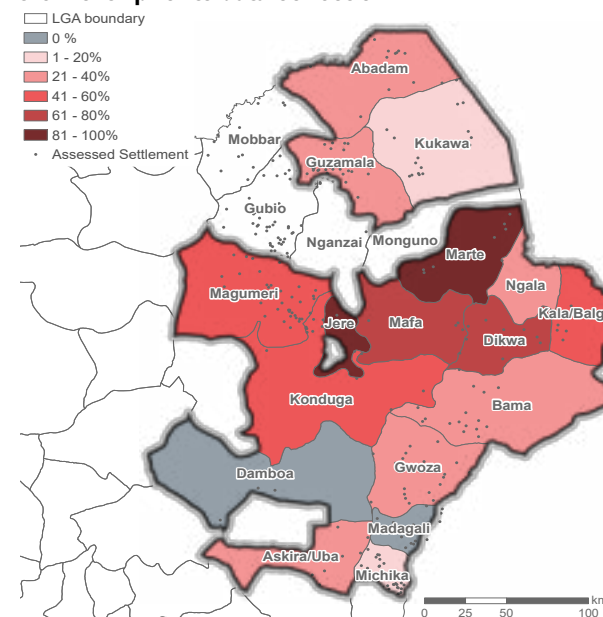
### Landmine accidents

Proportion of assessed settlements where at least one landmine-related accident with civilians or livestock had reportedly taken place in the month prior to data collection:



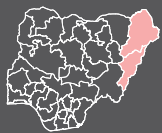
### Protection incidents

Proportion of assessed settlements where at least one incident of conflict resulting in the death of a civilian had reportedly taken place in the month prior to data collection:



<sup>1</sup> The most recent dataset on grid3.gov.ng/datasets has been used as the reference for settlement names and locations, and adjusted to account for deserted villages based on information shared by OCHA

<sup>2</sup> Due to changes in migration patterns, the specific settlements assessed within each LGA vary each month. Changes in results reported in this factsheet, compared to previous factsheets, may therefore be due to variations in the assessed settlements instead of changes over time.



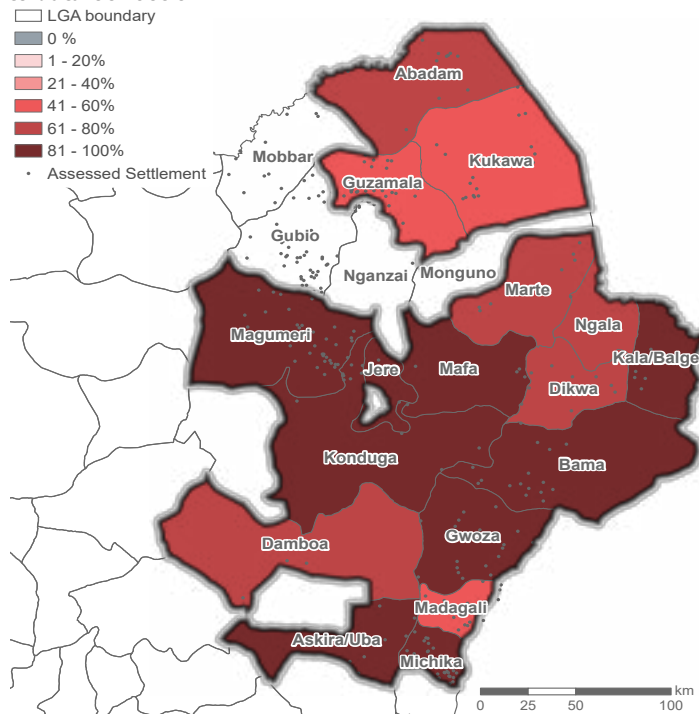
# Adamawa and Borno - Protection

## Assessment of Hard-to-Reach Areas in Northeast Nigeria

February 2021

### Protection incidents

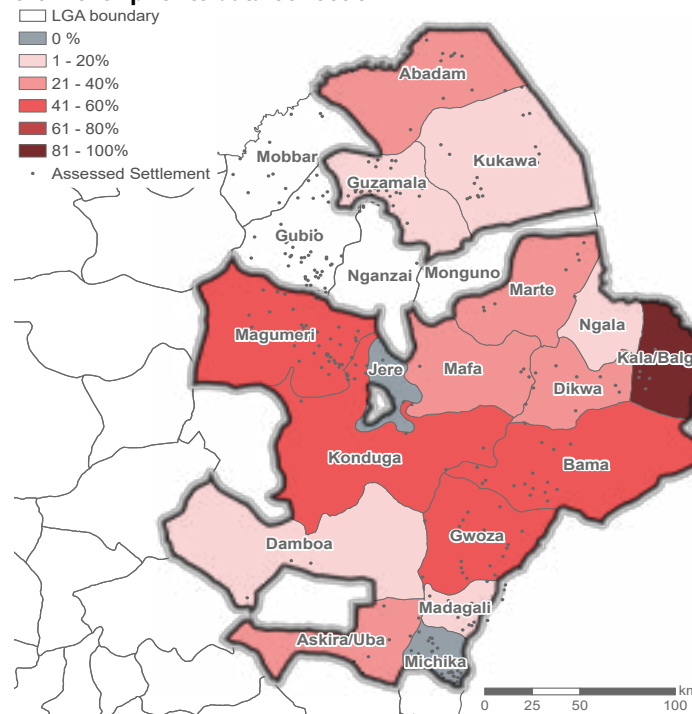
Proportion of assessed settlements where at least one case of looting had reportedly happened in the month prior to data collection:



Most commonly reported main safety concerns for girls (younger than 18), by % of assessed settlements:

Early or forced marriage	32%	<div></div>
Violence by AOG <sup>3</sup>	22%	<div></div>
No issues	19%	<div></div>
Abduction	7%	<div></div>
Sexual violence	4%	<div></div>
Other concerns <sup>4</sup>	5%	<div></div>

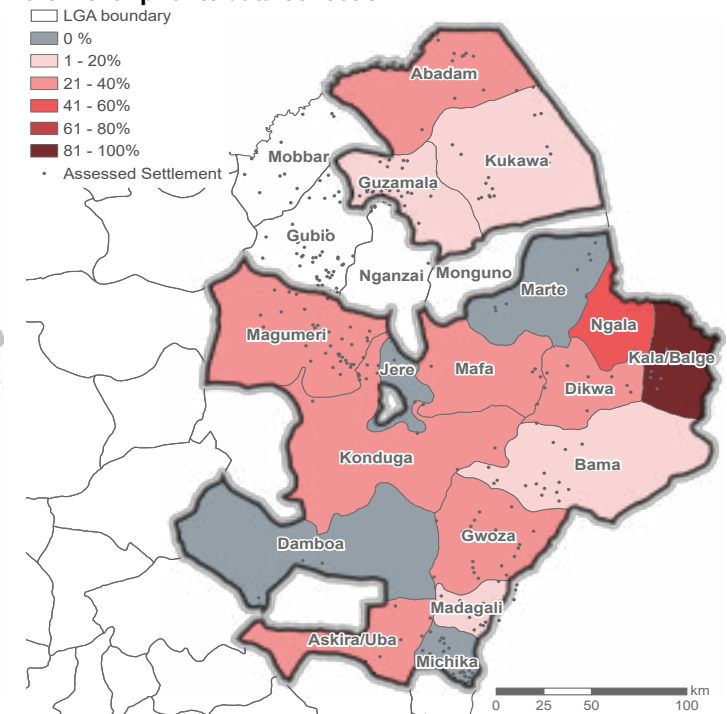
Proportion of assessed settlements where at least one case of abduction of girls (younger than 18) had reportedly happened in the month prior to data collection:



Most commonly reported main safety concerns for boys (younger than 18), by % of assessed settlements:

Violence by AOG <sup>3</sup>	39%	<div></div>
No issues	28%	<div></div>
Forced recruitment	14%	<div></div>
Abduction	7%	<div></div>
Looting	3%	<div></div>
Other concern <sup>5</sup>	3%	<div></div>

Proportion of assessed settlements where at least one case of abduction of boys (younger than 18) had reportedly happened in the month prior to data collection:



Most commonly reported main safety concerns for women (18 and older), by % of assessed settlements:

Violence by AOG <sup>3</sup>	48%	<div></div>
No issues	24%	<div></div>
Looting	7%	<div></div>
Abduction	3%	<div></div>
Harassment	3%	<div></div>
Other concern <sup>6</sup>	9%	<div></div>

Most commonly reported main safety concerns for men (18 and older), by % of assessed settlements:

Violence by AOG <sup>3</sup>	49%	<div></div>
No issues	19%	<div></div>
Looting	10%	<div></div>
Fees	10%	<div></div>
Abduction	4%	<div></div>
Other concern <sup>7</sup>	4%	<div></div>

<sup>3</sup> Armed Opposition Groups. <sup>4</sup> Other safety concerns reported for girls included: Family separation, harassment, looting and other conflict related concerns. <sup>5</sup> Other safety concerns reported for boys included: looting, fees and other conflict related concerns. <sup>6</sup> Other safety concerns reported for women included: Sexual violence, Fees, and family separation. <sup>7</sup> Other safety concerns reported for men included: Family separation, forced recruitment and harassment.