

NORTHWEST SYRIA MARKET MONITORING EXERCISE

Snapshot: 7th-14th June 2021

INTRODUCTION

To inform humanitarian cash programming, REACH - in partnership with the northeast (NES) and northwest (NWS) Syria Cash Working Group (CWG) - conducts monthly Market Monitoring Exercises in northern Syria to assess the availability and prices of 36 basic commodities that are typically sold in markets and consumed by average Syrian households, including food and non-food items, water, fuel, and cell phone data.

Of these, 18 items comprise the Survival Minimum Expenditure Basket (SMEB; see next page), which represents the minimum, culturally adjusted items required to support a 6-person household for a month.

The accompanying data is disseminated monthly and is distributed through partners across the humanitarian community. See REACH Resource Centre for the [June 2021 dataset](#).

Coverage and data collection dates

In June 2021, REACH and partners covered:

- 2 governorates
- 9 districts
- 33 subdistricts
- 79 communities
- 2,242 individual shops

In light of the fluctuation of the Syrian Pound (SYP)'s value and resulting market disruption, prices should be seen as representative only of the markets and dates where and when information was collected (7th-14th June 2021).

Partners

Data collection for this month was conducted by REACH and the following partners:

- ATAA
- GOAL
- People In Need (PIN)
- Syrian Association for Relief and Development (SARD)
- Solidarités International
- Violet

KEY DEVELOPMENTS

NWS SMEB Basket Price Increase

SYP

SMEB June value: 356,669 SYP

One month change (compared to May): **increase of 2%**

Six month change (compared to December): **increase of 26%**

United States Dollar (USD)

SMEB June value: 112 USD

One month change: **decrease of 2%**

Six month change: **increase of 7%**

Despite minor short term decreases, the first half of 2021 continues to have the highest recorded SMEB in SYP in the history of the Market Monitoring exercise, which began in November 2016. The inflating prices are attributed to the protracted hyperinflation of the Syrian economy. The SMEB in 2021 has ranged between 112-116 United States Dollars (USD), which is the highest recorded cost in USD since June 2019.

SMEB Water Trucking Price Increase #1

NWS average: 13,365 SYP per 4,500 litres

One month price change: **increase of 2%**

Six month price change: **increase of 33%**

% of surveyed vendors reporting water trucking as unavailable in their community/neighbourhood: 0%

Water trucking is the main source of clean water for most individuals. Prices increased only slightly in line with currency fluctuations, despite **severe drought** conditions caused by precipitation levels remaining below average every month, compounded by warm temperatures in the spring. Water trucking for drinking water is priced in Turkish Lira (TRY), which affords some stability in price, but water trucking is also affected by erratic fuel costs. REACH field teams report that there are suitable levels of water required for basic daily needs, but **agricultural output has been hard hit**, and prices remain erratic across governorates:

- Aleppo: 13,950 SYP per 4,500 litres
- Idlib: 12,735 SYP per 4,500 litres

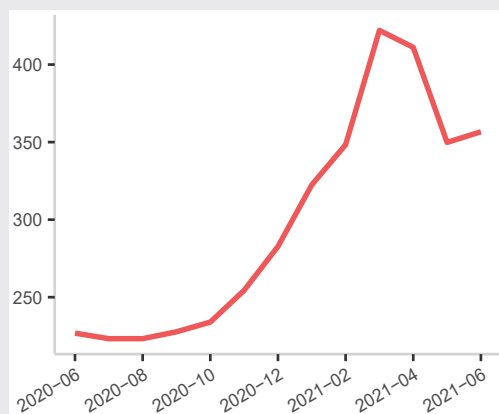
MEDIAN SMEB COST FOR NWS

356,669 SYP (112 USD)

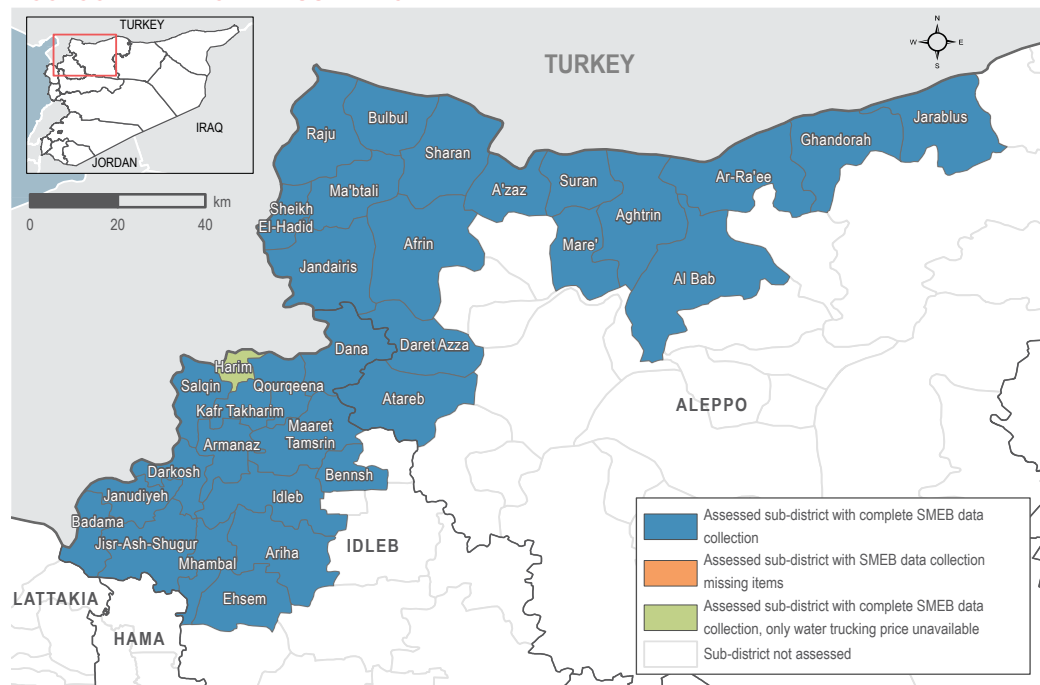
NWS COVERAGE: IDLEB, WESTERN & NORTHERN ALEPPO GOVERNORATES

MEDIAN SMEB COSTS, BY MONTH

Thousand Syrian Pounds



ASSESSED AREAS AND COVERAGE



#1 Equates to 25L per person for day. See page 6 for further water trucking data

NORTHWEST SYRIA - KEY DEVELOPMENTS AND OVERVIEW

MEDIAN SMEB COSTS & CHANGES

Syrian Pounds

Sub-district	SMEB	One month change	Six month change
Northwest Syria	356,669	2%	26%
Afrin	353,828	-7%	NA
Aghtrin	351,020	6%	35%
Al Bab	366,581	12%	39%
Ariha	399,174	NA	NA
Armanaz	387,805	-1%	31%
Ar-Ra'ee	339,787	0%	34%
Atareb	405,509	3%	NA
A'zaz	351,139	6%	26%
Badama	357,142	4%	21%
Bennsh	327,106	-6%	25%
Bulbul	357,429	3%	26%
Dana	378,397	2%	29%
Daret Azza	380,413	9%	35%
Darkosh	354,785	-4%	18%
Ehsem	380,032	NA	NA
Ghandorah	350,810	3%	29%
Harim	NA	NA	NA
Idleb	382,388	-5%	38%
Jandairis	352,240	-4%	NA
Janudiyeh	354,385	NA	22%
Jarablus	365,479	3%	30%
Jisr-Ash-Shugur	356,410	3%	20%
Kafr Takharim	332,053	-8%	17%
Maaret Tamsrin	376,865	2%	31%
Ma'btali	347,531	2%	NA
Mare'	355,981	2%	22%
Mhambal	368,835	3%	27%
Qourqeena	349,160	-4%	19%
Raju	357,232	8%	NA
Salqin	373,012	3%	27%
Sharan	353,057	4%	32%
Sheikh El-Hadid	356,928	2%	41%
Suran	353,922	1%	33%

SURVIVAL MINIMUM EXPENDITURE BASKET (SMEB) CONTENTS

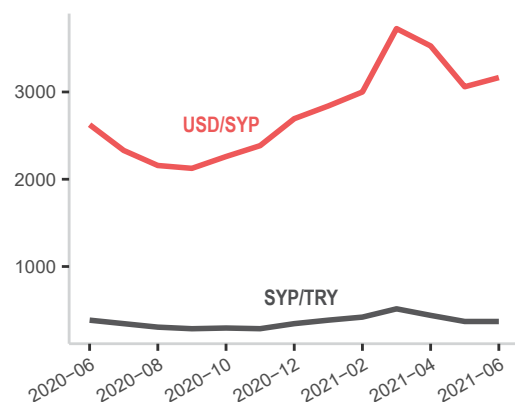
	Item	Quantity	
Food Items	Bread	37 kg	
	Bulgur	15 kg	
	Chicken	6 kg	
	Eggs	6 kg	
	Fresh vegetables	12 kg	
	Ghee/vegetable oil	7 kg/L	
	Red lentils	15 kg	
	Rice	19 kg	
	Salt	1 kg	
	Sugar	5 kg	
	Tomato paste	6 kg	
	Hygiene items	Bathing soap	12 bars
		Laundry/dish soap	3 kg
Sanitary pads		4 packs of 10	
Toothpaste		200 g	
Fuel	Cooking fuel+	25 L	
Water	Water trucking	4500 L	
Telecom	Smartphone data	1 GB	
Other	Float (other costs)++	7.5% total value	

+ Kerosene in northern Syria

++ Float only applied to observations where prices of all SMEB contents could be collected.

Note: Lack of data for a SMEB item does not necessarily imply a shortage.

EXCHANGE RATES, BY MONTH & CURRENCY



KEY DEVELOPMENTS CONTINUED

High Quality Transport Fuel Price Increase #2

The significant unavailability of lower quality (manually refined) but less expensive petrol - largely European fuel imported via Turkey - forces prices for high quality petrol to remain high, driven both by increasing demand as well as by fluctuating exchange rates of both the SYP and the TRY against the USD.

High Quality Diesel: 1,668 SYP per litre

One month price change: **increase of 4%**
Six month price change: **increase of 44%**
% of surveyed vendors reporting high quality diesel as unavailable in their community/neighbourhood: 2%

High Quality Petrol: 2,494 SYP per litre

One month price change: **increase of 4%**
Six month price change: **increase of 51%**
% of surveyed vendors reporting high quality petrol as unavailable in their community/neighbourhood: 3%

Low Quality Manually Refined Fuels

Manually refined petrol remains frequently unavailable in NWS due to low import levels. Incidents in and around refineries further impact availability and cost of manually refined fuels, according to REACH field teams. Currently, high and low quality diesel remain only slightly higher in cost than low quality petrol, and REACH field teams reported that both high and low quality fuels are frequently used for transportation and generators.

Manually Refined Diesel: 1,650 SYP per litre

One month price change: **increase of 3%**
Six month price change: **increase of 25%**
% of surveyed vendors reporting manually refined diesel as unavailable in their community/neighbourhood: 2%

Manually Refined Petrol: 1,500 SYP per litre

One month price change: **no change (0%)**
Six month price change: **increase of 15%**
% of surveyed vendors reporting manually refined petrol as unavailable in their community/neighbourhood: 76%

Exchange Rates Fall #3

USD

Informal USD/SYP regional median exchange rate: 3,165 SYP to 1 USD

One month rate change: **increase of 4%**
Six month rate change: **increase of 17%**

The highest exchange rate was recorded at 3,244 SYP for 1 USD in Eskat community, in Idleb governorate.

TRY

Informal USD/TRY regional median exchange rate: 8.65 TRY to 1 USD

One month rate change: **increase of 4%**
Six month rate change: **increase of 10%**

In June, both the TRY and SYP depreciated against the USD, reversing a positive trend of appreciation seen in the three months prior to data collection.

* For these sub-districts, more than 50% of the items' median prices rely on less than 3 observations.

** For these sub-districts, all of the items' median prices rely on less than 3 observations.

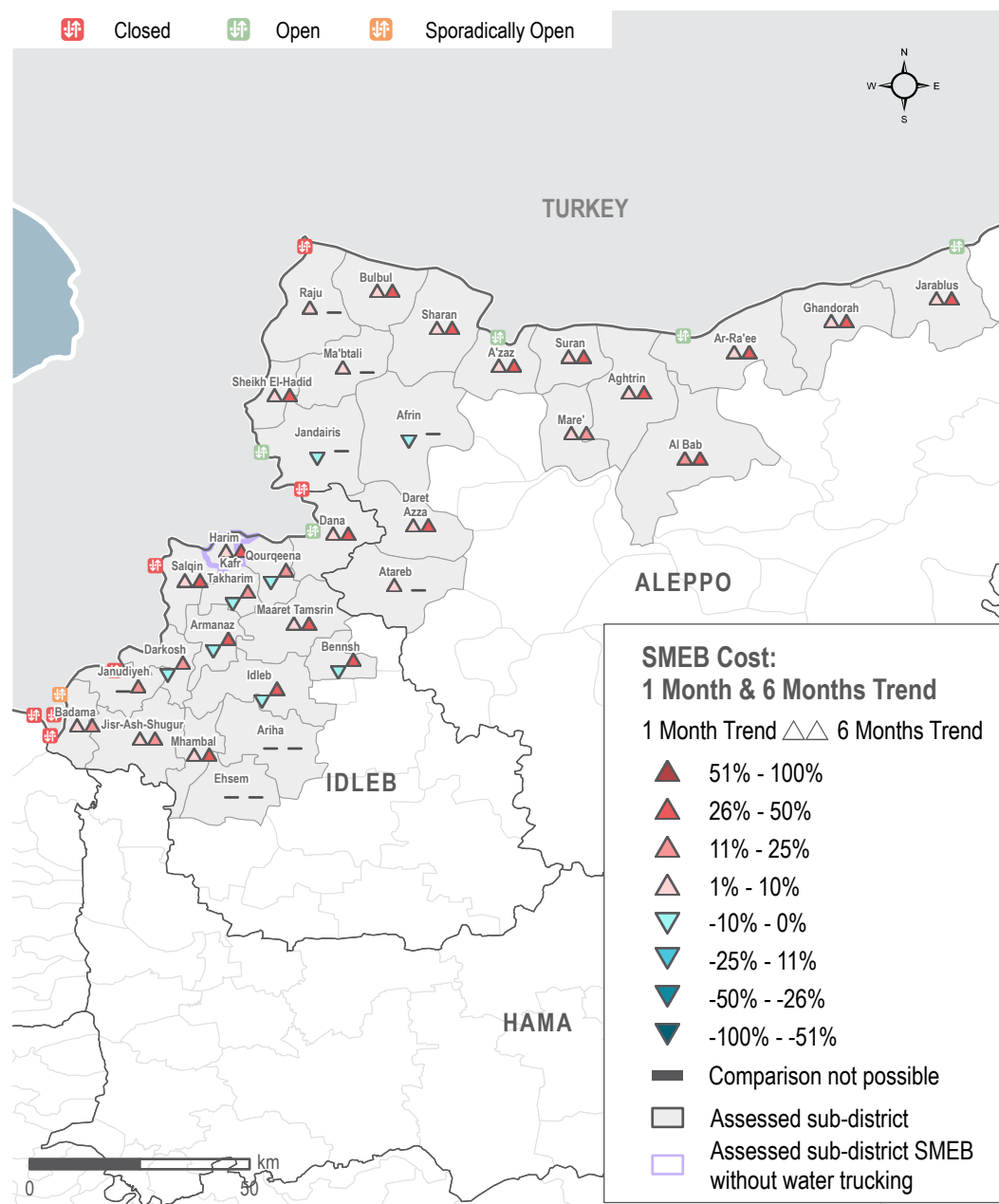
Note: For price and change calculations, only the communities within a sub-district with consistent coverage across months are included. The above applies to all tables.

#2 See page 10 for further fuel data

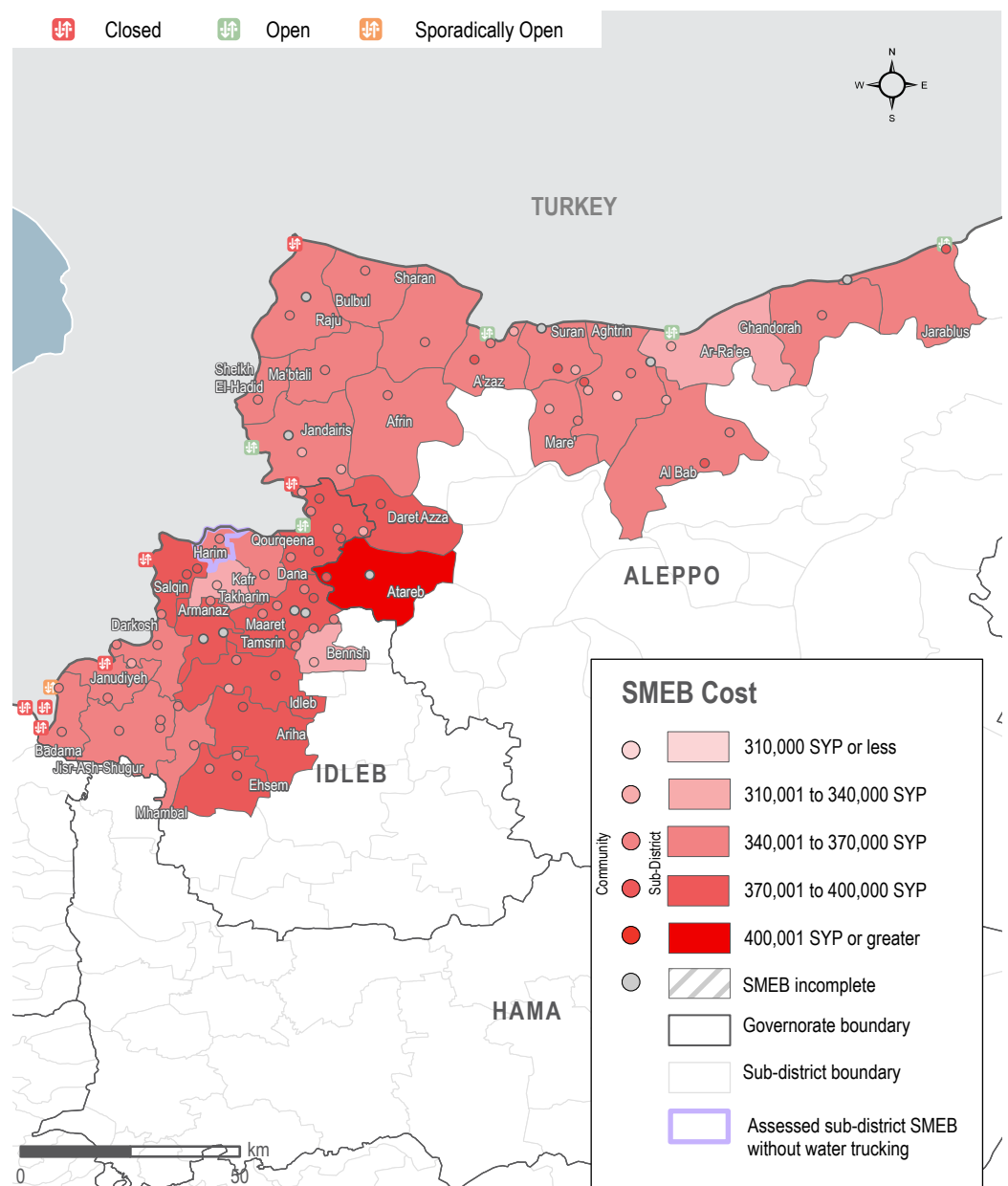
#3 To compare SYP prices to USD or TRY, our [June 2021 dataset](#) provides informal exchange rates at the regional, district, subdistrict and community levels, where data is available

NORTHWEST SYRIA - KEY DEVELOPMENTS AND OVERVIEW

SMEB Cost: 1 month and 6 months trend



SMEB cost ranges (SYP), by sub-districts and communities



NORTHWEST SYRIA - SMEB FOOD ITEMS

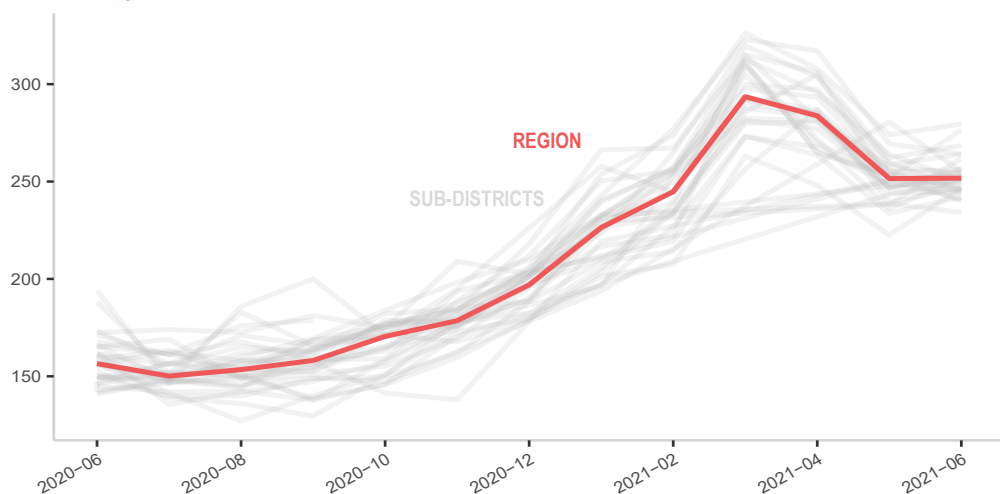
MEDIAN SMEB COST: FOOD ITEMS

Syrian Pounds

Sub-district	SMEB Food	One month change	Six month change	Sub-district	SMEB Food	One month change	Six month change
Northwest Syria	251,710	0%	28%	Harim	256,245	4%	37%
Afrin	255,200	-9%	NA	Idleb	245,300	-4%	29%
Aghtrin	242,130	4%	33%	Jandairis	240,675	-4%	NA
Al Bab	246,626	11%	38%	Janudiyeh	252,750	0%	20%
Ariha	285,230	NA	NA	Jarablus	254,327	2%	29%
Armanaz	264,114	-2%	28%	Jisr-Ash-Shugur	252,380	2%	25%
Ar-Ra'ee	247,903	-2%	38%	Kafr Takharim	245,733	-5%	20%
Atareb	279,503	2%	38%	Maaret Tamsrin	254,350	-1%	30%
A'zaz	251,710	7%	29%	Ma'bтали	234,135	-2%	NA
Badama	250,300	1%	23%	Mare'	244,600	0%	21%
Bennsh*	240,105	-5%	27%	Mhambal	264,075	2%	25%
Bulbul	251,285	1%	33%	Qourqeena	243,618	-4%	23%
Dana	256,245	1%	27%	Raju	262,000	10%	NA
Daret Azza	276,475	10%	37%	Salqin	268,540	2%	33%
Darkosh	250,483	-5%	15%	Sharan*	249,725	3%	39%
Ehsem	255,058	NA	NA	Sheikh El-Hadid	253,200	1%	42%
Ghadorah	247,050	3%	31%	Suran	245,790	-1%	35%

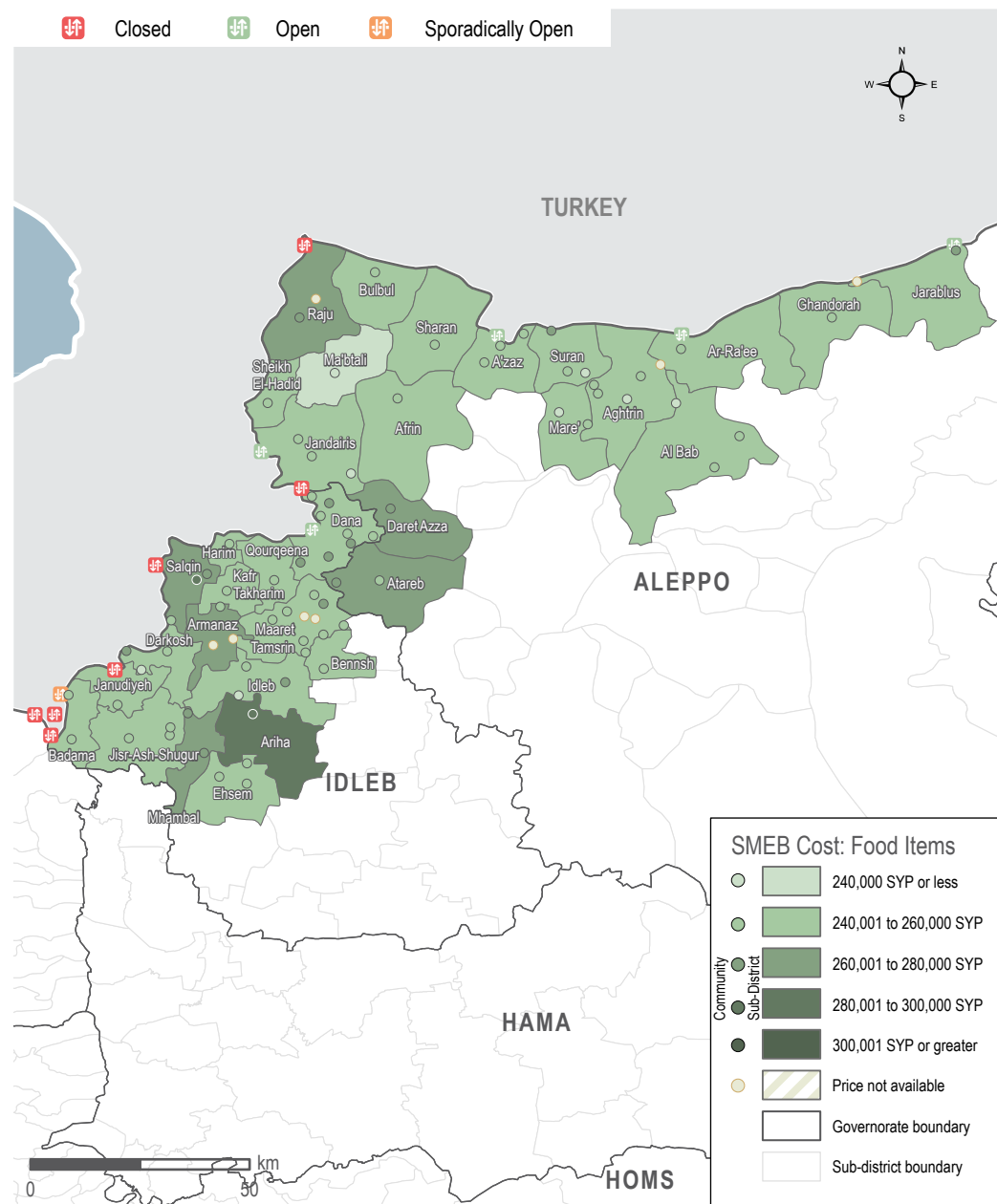
MEDIAN SMEB COST: FOOD ITEMS, BY MONTH

Thousand Syrian Pounds



SMEB FOOD ITEMS' COST

Sub-districts & Communities, Syrian Pounds



SMEB FOOD COMPONENT 251,710 SYP (80 USD)^{#4}

One month price change: **no change (0%)**

Six month price change: **increase of 28%**

Highest % of surveyed vendors reporting a SMEB food item as unavailable in their community/neighbourhood: 2% for chicken

Highest % of surveyed vendors reporting SMEB food item as unavailable in their community/neighbourhood for previous month: 1% for chicken

The prices within the SMEB Food component saw many changes in June. There was a decrease in the cost of fresh vegetables, chicken and eggs due to the agricultural harvesting season. However, the prices of bulk foods, such as rice, sugar, flour and bread, increased relative to the previous month (May).

SMEB BULK FOODS 112,000 SYP (35 USD)

One month price change: **increase of 5%**

Six month price change: **increase of 25%**

- Rice: increased by **12%**
- Sugar: increased by **9%**
- Red lentils: increased by **2%**
- Tomato paste: no change **(0%)**
- Salt: no change **(0%)**
- Bulgur: decreased **-8%**

According to REACH field teams, these items are typically imported, subjecting them to import fees and fluctuations of the SYP and TRY against the USD. Furthermore, according to the [Turkish Statistical Institute](#), the prices of rice, sugar, and red lentils increased in Turkey June, which likely contributed to the price increases in Northwest Syria.

SMEB VEGETABLE COMPONENT 8,334 SYP (3 USD)

One month price change: **decrease of 22%**

Six month price change: **decrease of 31%**

- Potatoes: decreased by **8%**
- Tomatoes: decreased by **23%**
- Onions: decreased by **28%**
- Cucumbers: decreased by **39%**

REACH field teams reported that these price drops were likely attributed to key vegetable items being in season and produced locally, bolstered by significant imports from Government of Syria (GoS) areas, Egypt and Turkey.

BREAD 919 SYP PER 8 PIECE BUNDLE (0.3 USD)

One month price change: **increase of 9%**

Six month price change: **increase of 35%**

% of surveyed vendors reporting bread as unavailable in their community/neighbourhood: 1%

Price fluctuations are likely due to both the appreciation of the SYP and general subsidies by the authorities. Prices for bread can vary between governorates, but in June were somewhat similar:

- Aleppo: 900 SYP
- Idleb: 925 SYP

Wheat production has been hard hit by droughts across the middle east, "as rainfall received from the beginning of 2021 onwards did not compensate for the delayed onset and previously recorded deficits", [according to the World Food Programme](#). Wheat prices also [increased in Turkey](#) which may have further affected the price of imported flour.

FLOUR 1,300 SYP PER KILO (0.4 USD)

One month price change: **increase of 7%**

Six month price change: **increase of 37%**

% of surveyed vendors reporting flour as unavailable in their community/neighbourhood: 1%

Flour is typically imported from Turkey and the increase in price correlates with an increase in the fluctuating exchange rate.

CHICKEN 5,665 SYP PER KILO 1.8 USD)

One month price change: **decrease of 10%**

Six month price change: **increase of 76%**

% of surveyed vendors reporting chicken as unavailable in their community/neighbourhood: 2%

Prices for chicken decreased in June due to the summer season, whereby both local chicken and local chicken feed became more available, as reported by REACH field teams.

EGGS 5,400 SYP FOR 30 EGGS (1.7 USD)

One month price change: **decrease of 4%**

Six month price change: **increase of 4%**

% of surveyed vendors reporting eggs as unavailable in their community/neighbourhood: 0%

COOKING FUELS

Kerosene and LP gas are the typical cooking and heating fuel in NWS, and somewhat similar in price per litre although Kerosene is much more widely available.

Manually Refined Kerosene:

2,200 SYP per litre (0.7 USD)

One month price change: **increase of 16%**

Six month price change: **increase of 28%**

% of surveyed vendors reporting manually refined kerosene as unavailable in their community/neighbourhood: 69%

LP Gas:

43,125 SYP per canister^{#5} (13.6 USD)

One month price change: **increase of 6%**

Six month price change: **increase of 35%**

% of surveyed vendors reporting LP gas as unavailable in their community/neighbourhood: 0%

^{#4} June informal regional exchange rate for NWS: 3,165 SYP

^{#5} Prices are taken for the cheapest available canister at the time of data collection, which is typically 20-25 litres.

NORTHWEST SYRIA - SMEB WATER TRUCKING

MEDIAN SMEB WATER TRUCKING PRICE

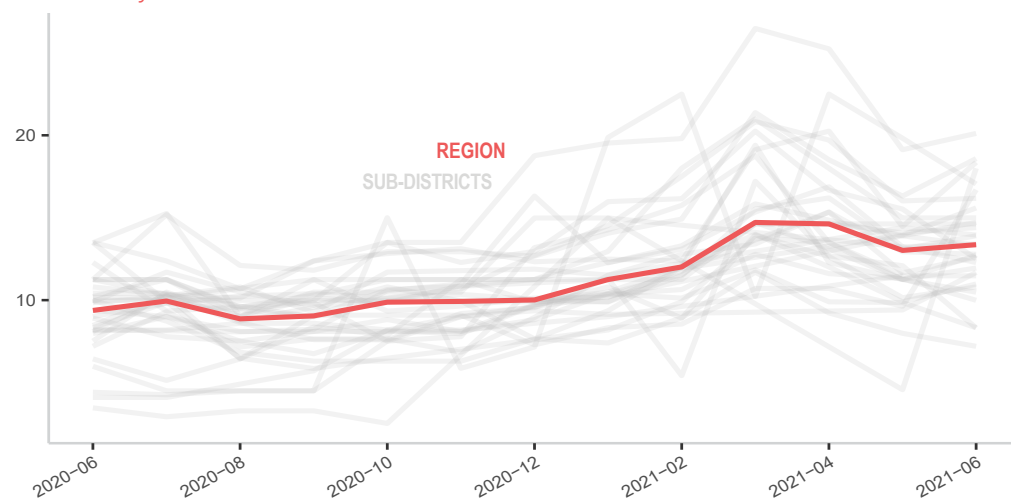
4,500L, Syrian Pounds

Sub-district	SMEB Water Truck	One month change	Six month change
Northwest Syria	13,365	2%	33%
Afrin	15,593	12%	NA
Aghtrin	14,400	2%	46%
Al Bab	18,585	14%	47%
Ariha	16,695	73%	129%
Armanaz	12,600	8%	41%
Ar-Ra'ee	10,980	11%	10%
Atareb	8,325	-16%	-6%
A'zaz	12,784	-1%	26%
Badama	12,735	13%	66%
Bennsh	7,200	-10%	-6%
Bulbul	13,950	-3%	17%
Dana	9,990	-12%	3%
Daret Azza	10,800	6%	12%
Darkosh	12,510	-19%	-3%
Ehsem	14,220	NA	NA
Ghandorah**	14,625	0%	30%

Sub-district	SMEB Water Truck	One month change	Six month change
Harim**	NA	NA	NA
Idleb	20,115	5%	7%
Jandairis	14,715	6%	NA
Janudiyeh	10,485	-7%	-20%
Jarablus	18,360	27%	49%
Jisr-Ash-Shugur	13,905	6%	40%
Kafr Takharim	8,316	-31%	-13%
Maaret Tamsrin	11,948	6%	19%
Ma'btali	18,000	294%	NA
Mare'	13,320	-4%	-18%
Mhambal	16,178	1%	27%
Qourqeena	17,045	-14%	138%
Raju**	11,678	24%	25%
Salqin	13,410	1%	19%
Sharan	11,475	0%	34%
Sheikh El-Hadid	12,285	-7%	-18%
Suran	14,993	0%	33%

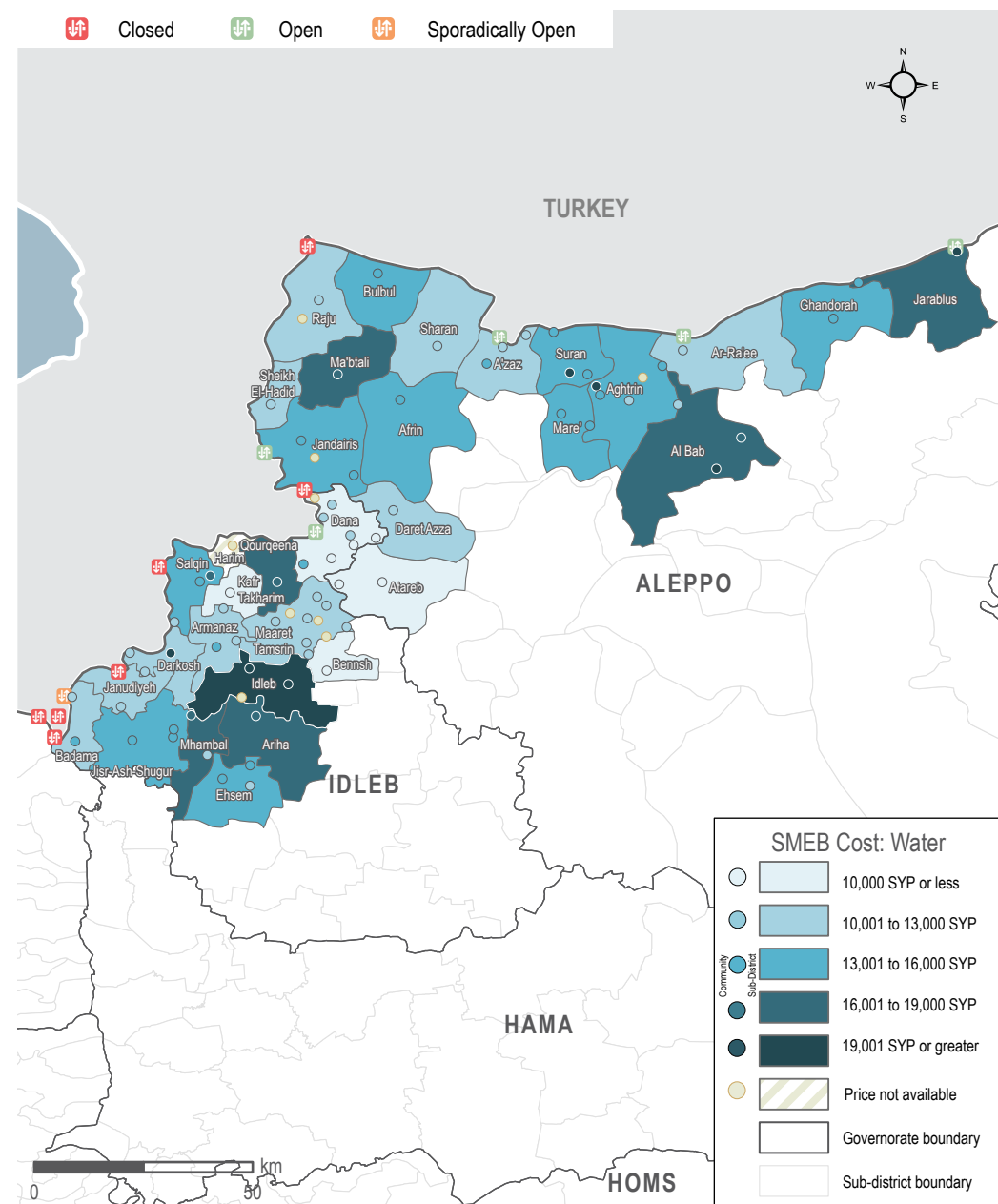
MEDIAN SMEB WATER TRUCKING COSTS, BY MONTH

Thousand Syrian Pounds



SMEB WATER TRUCKING COST

Sub-districts & Communities, Syrian Pounds



NORTHWEST SYRIA - SMEB HYGIENE ITEMS W

MEDIAN SMEB HYGIENE ITEMS' PRICE

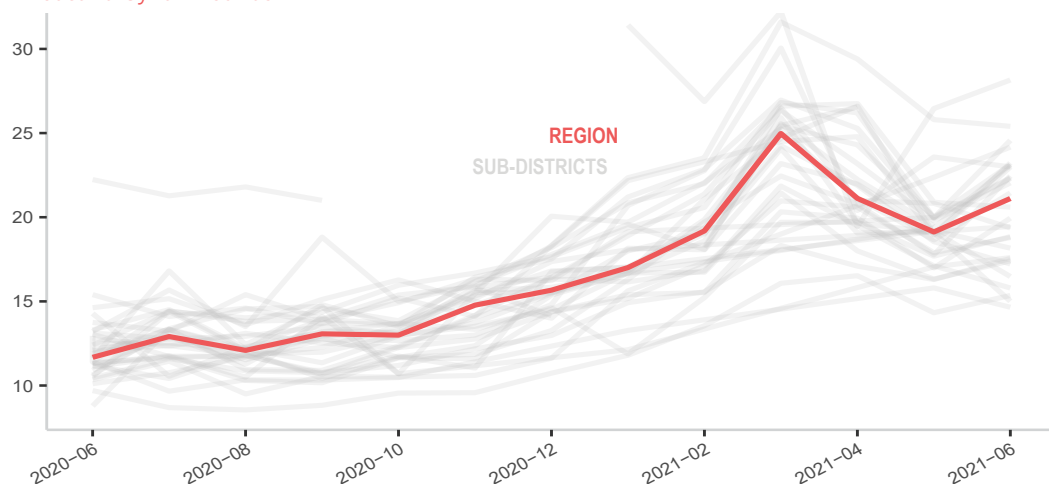
12 bars of soap, 4 packs of 10 sanitary pads, 200g of toothpaste, 3kg of laundry/dish soap, Syrian Pounds

Sub-district	SMEB Hygiene Items	One month change	Six month change
Northwest Syria	21,113	10%	35%
Afrin	17,600	3%	NA
Aghtrin	15,350	7%	43%
Al Bab	19,945	17%	39%
Ariha	25,400	-2%	39%
Armanaz	22,040	11%	34%
Ar-Ra'ee	19,449	2%	34%
Atareb	28,155	6%	NA
A'zaz	18,847	7%	29%
Badama	24,566	23%	39%
Bennsh	15,010	-21%	7%
Bulbul	23,120	16%	42%
Dana	22,300	12%	27%
Daret Azza	22,988	21%	26%
Darkosh	22,990	-3%	55%
Ehsem	23,241	NA	NA
Ghandorah	17,410	7%	13%

Sub-district	SMEB Hygiene Items	One month change	Six month change
Harim	23,225	22%	50%
Idleb	15,795	-8%	-3%
Jandairis	16,475	-14%	NA
Janudiyeh**	22,300	NA	58%
Jarablus	18,794	5%	31%
Jisr-Ash-Shugur	21,446	15%	7%
Kafr Takharim	19,363	-7%	15%
Maaret Tamsrin	22,350	12%	36%
Ma'btali	14,651	-7%	NA
Mare'	17,225	-7%	11%
Mhambal	17,550	8%	35%
Qourqeena	20,600	-1%	13%
Raju	18,163	-5%	5%
Salqin	21,113	10%	26%
Sharan	23,100	19%	46%
Sheikh El-Hadid	24,166	8%	108%
Suran	22,447	26%	69%

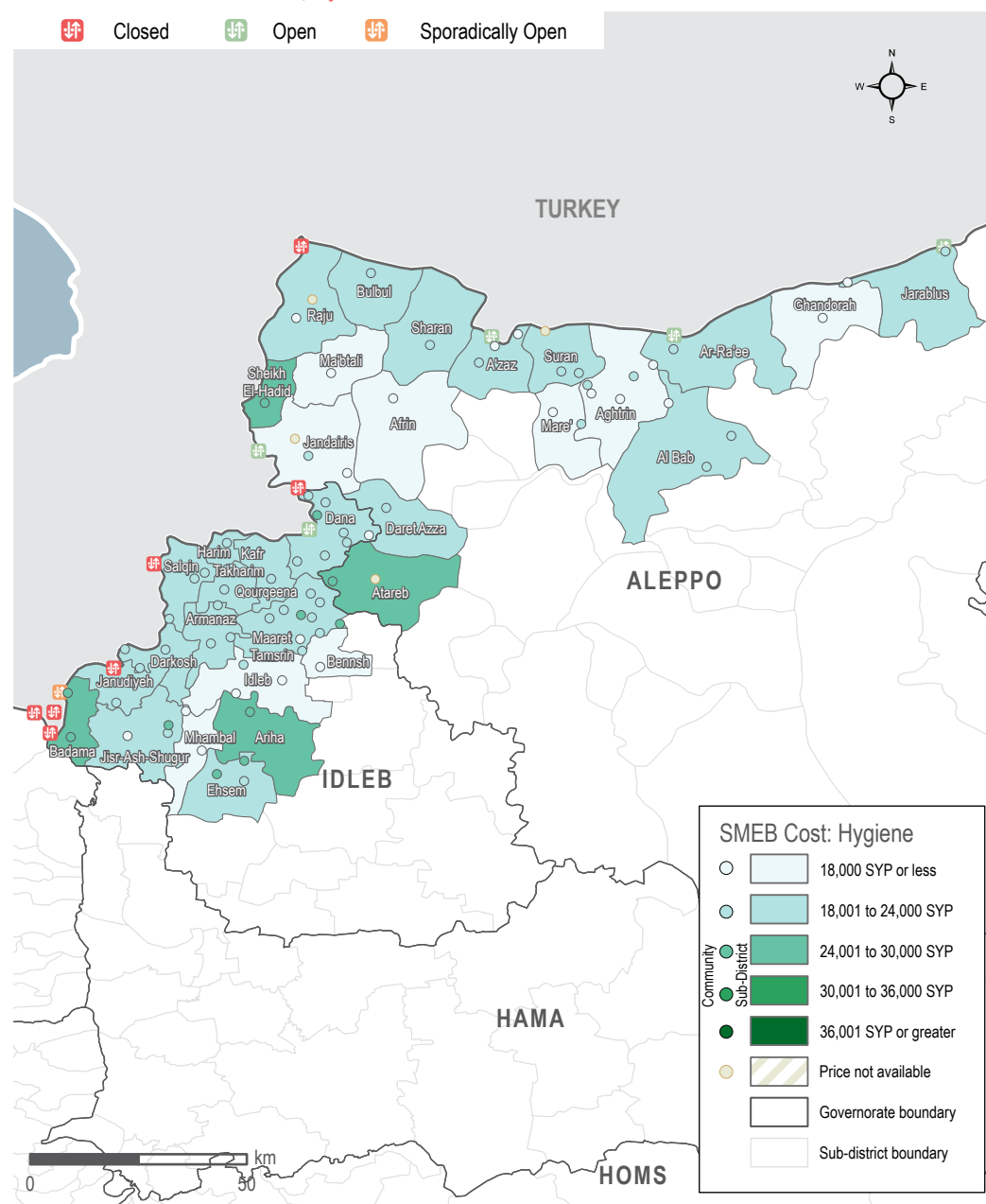
MEDIAN SMEB HYGIENE ITEMS' COSTS, BY MONTH

Thousand Syrian Pounds



SMEB HYGIENE ITEMS' COST

Sub-districts & Communities, Syrian Pounds



NORTHWEST SYRIA - SMEB CELLPHONE DATA

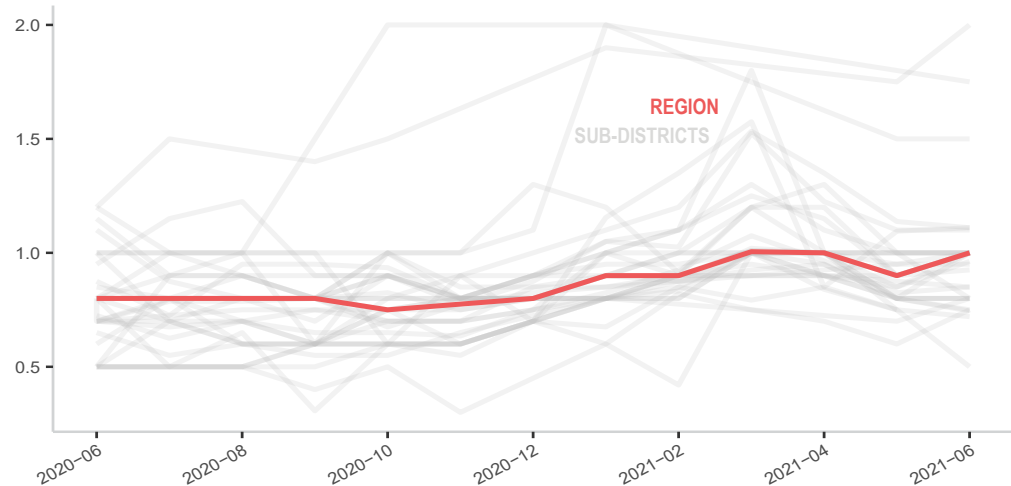
MEDIAN SMEB CELLPHONE DATA PRICE

1GB data, Syrian Pounds

Sub-district	SMEB Data (1GB)	One month change	Six month change
Northwest Syria	1,000	11%	25%
Afrin	2,000	14%	NA
Aghtrin	800	0%	-11%
Al Bab	850	-3%	13%
Ariha	750	25%	7%
Armanaz	745	-7%	-7%
Ar-Ra'ee	750	-6%	-6%
Atareb	1,110	1%	59%
A'zaz	800	0%	-11%
Badama	1,000	18%	18%
Bennsh	720	-4%	3%
Bulbul	950	0%	15%
Dana	963	13%	20%
Daret Azza	1,110	-2%	11%
Darkosh	925	3%	32%
Ehsem	1,000	NA	NA
Ghandorah	1,000	11%	11%

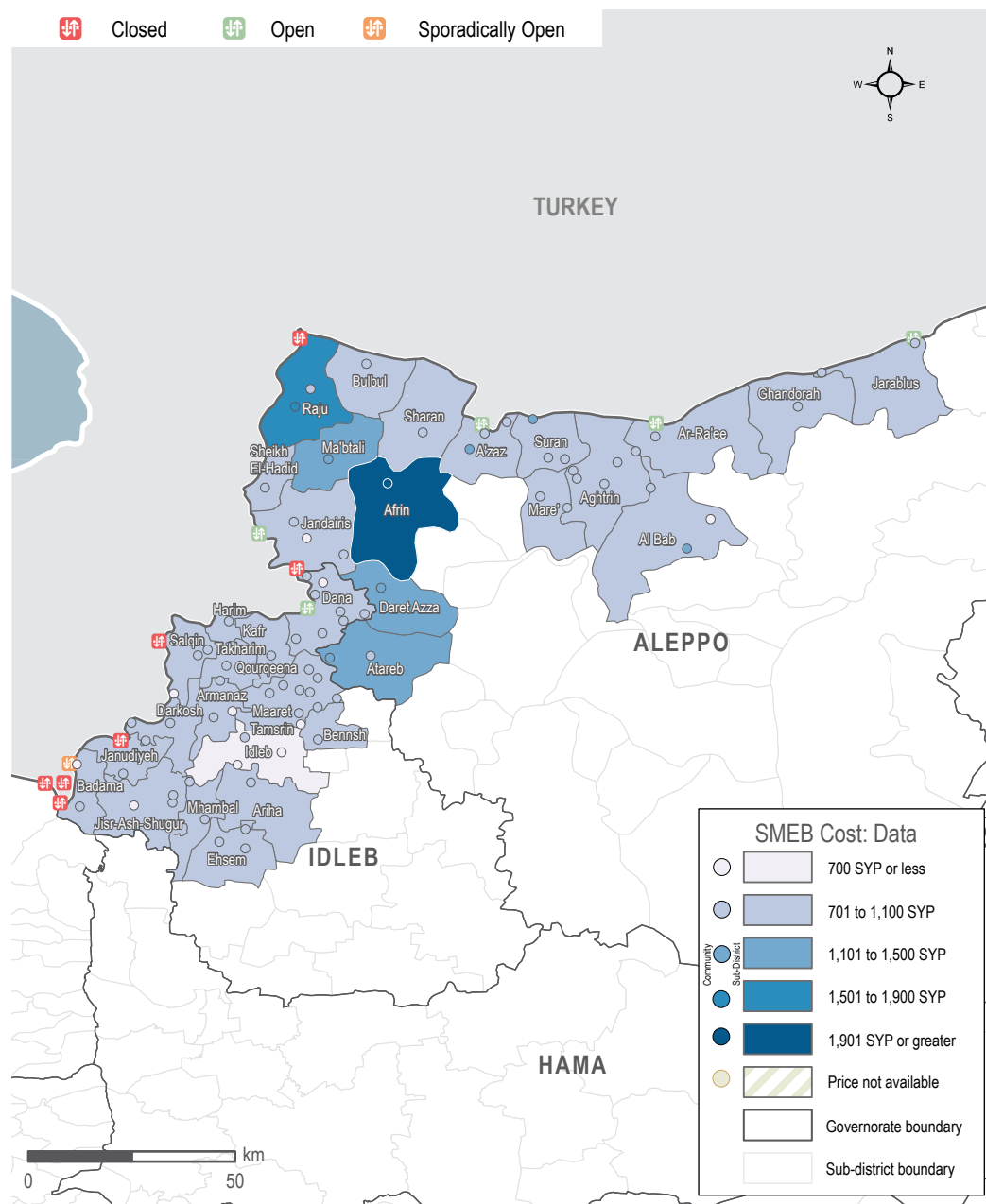
MEDIAN SMEB CELLPHONE DATA COST, BY MONTH

Thousand Syrian Pounds



SMEB CELLPHONE DATA COST

Sub-districts & Communities, Syrian Pounds



NORTHWEST SYRIA - SMEB COOKING FUEL

MEDIAN SMEB COOKING FUEL PRICE

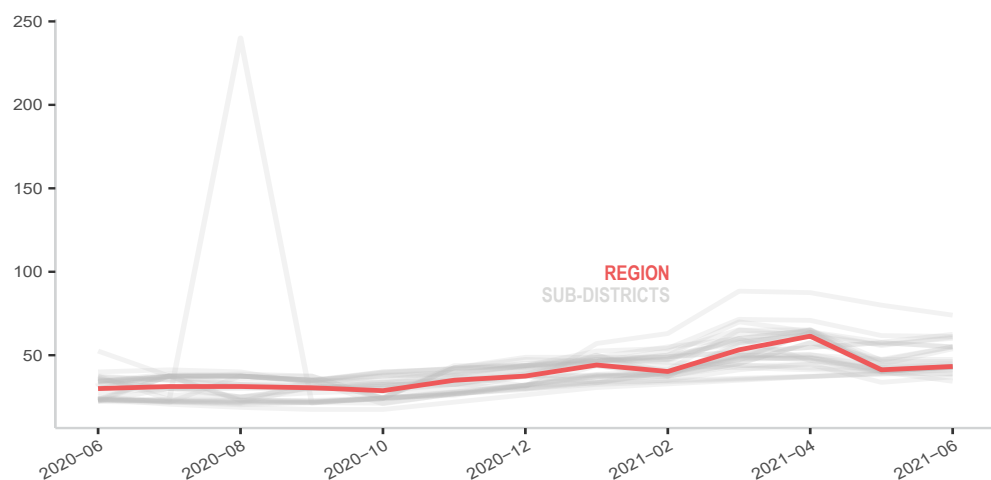
Kerosene 25L and LPG 20L, Syrian Pounds

Sub-district	SMEB Cooking Fuel	One month change	Six month change
Northwest Syria	43,250	4%	15%
Afrin**	38,750	-2%	NA
Aghtrín	53,850	21%	39%
Al Bab	55,000	17%	42%
Ariha*	43,250	-1%	34%
Armanaz	61,250	-1%	40%
Ar-Ra'ee	37,000	10%	23%
Atareb**	60,125	6%	43%
A'zaz	42,500	5%	13%
Badama*	43,625	9%	0%
Bennsh*	41,250	1%	29%
Bulbul*	43,188	7%	-4%
Dana	62,500	8%	43%
Daret Azza*	42,500	3%	33%
Darkosh*	43,125	6%	34%
Ehsem	60,000	NA	NA
Ghandorah*	46,250	0%	23%

Sub-district	SMEB Cooking Fuel	One month change	Six month change
Harim*	43,125	7%	-9%
Idleb*	74,000	-8%	137%
Jandairis	55,000	-4%	NA
Janudiyeh*	43,125	6%	34%
Jarablus	47,500	0%	27%
Jisr-Ash-Shugur*	42,813	4%	1%
Kafr Takharim*	34,375	-14%	8%
Maaret Tamsrin*	60,925	9%	39%
Ma'btali	55,000	-4%	NA
Mare'	55,000	16%	47%
Mhambal*	44,500	5%	39%
Qourqeena*	42,688	5%	-12%
Raju*	38,719	0%	32%
Salqin*	43,125	3%	-1%
Sharan*	43,125	8%	-1%
Sheikh El-Hadid*	41,375	7%	38%
Suran	45,000	1%	14%

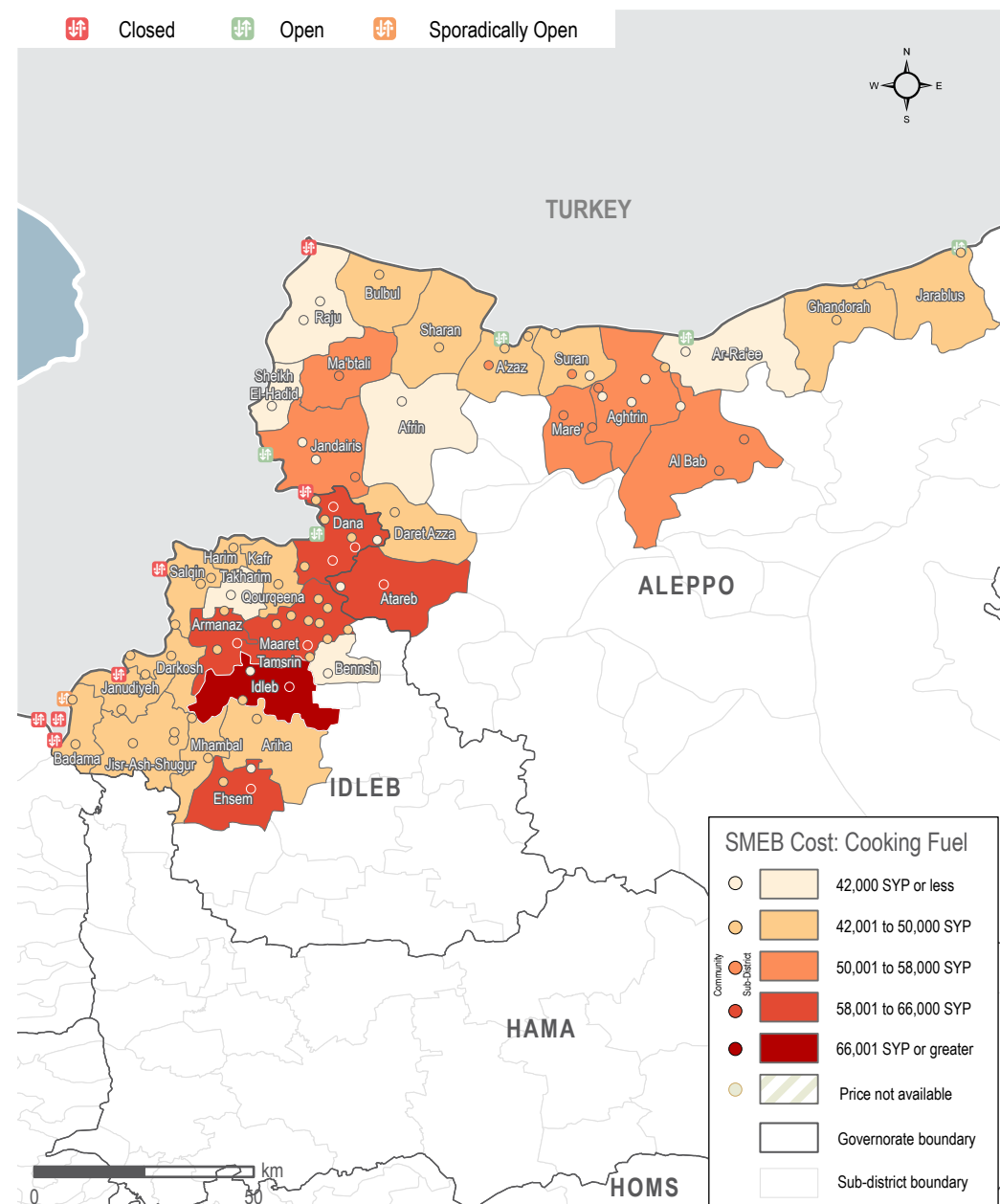
MEDIAN SMEB COOKING FUEL COSTS, BY MONTH

Thousand Syrian Pounds



SMEB COOKING FUEL COST

Sub-districts & Communities, Syrian Pounds



NORTHWEST SYRIA - TRANSPORT FUEL

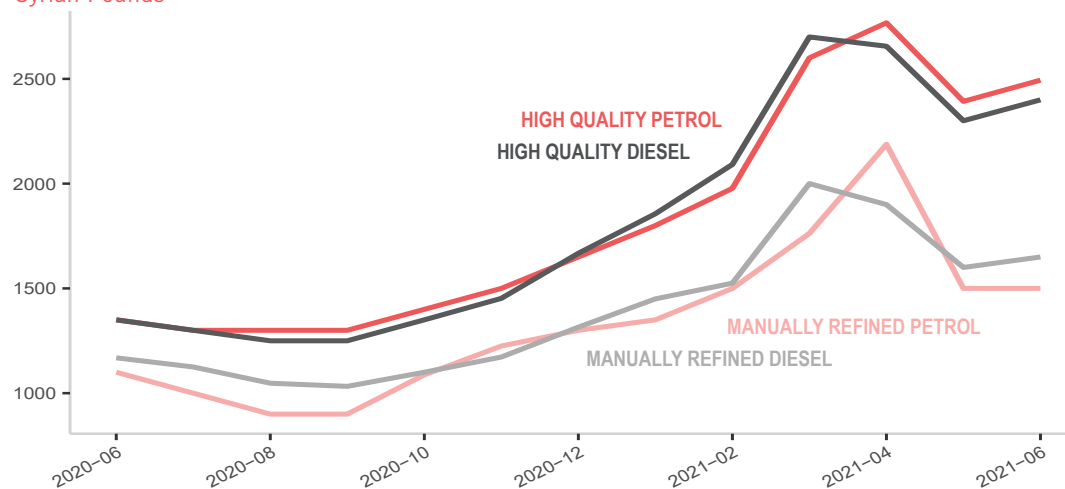
MEDIAN TRANSPORT FUEL PRICE

Diesel and Petrol, 1L (High Quality and Manually Refined), Syrian Pounds

Sub-district	Transport Fuel	One month change	Six month change	Sub-district	Transport Fuel	One month change	Six month change
Northwest Syria	2,163	4%	40%	Harim	2,200	5%	35%
Afrin**	2,033	5%	NA	Idleb	2,163	-1%	37%
Aghtrin	1,838	4%	30%	Jandairis	2,025	0%	NA
Al Bab	1,853	1%	36%	Janudiyeh*	2,200	6%	32%
Ariha*	2,475	3%	46%	Jarablus	2,000	3%	39%
Armanaz	2,267	5%	37%	Jisr-Ash-Shugur	2,200	2%	42%
Ar-Ra'ee	1,800	0%	23%	Kafr Takharim	2,176	6%	40%
Atareb	2,116	5%	37%	Maaret Tamsrin	2,195	3%	40%
A'zaz	1,865	0%	31%	Ma'btali	1,950	-15%	NA
Badama	2,225	4%	39%	Mare'	1,863	-4%	24%
Bennsh	2,267	5%	39%	Mhambal	2,299	7%	45%
Bulbul*	1,650	0%	27%	Qourqeena	2,178	3%	33%
Dana	2,202	4%	41%	Raju	1,883	-8%	36%
Daret Azza	2,185	5%	40%	Salqin	2,209	4%	40%
Darkosh	2,217	5%	43%	Sharan	2,200	6%	47%
Ehsem	2,000	NA	NA	Sheikh El-Hadid	2,050	3%	48%
Ghandorah	1,900	-1%	32%	Suran	1,869	2%	32%

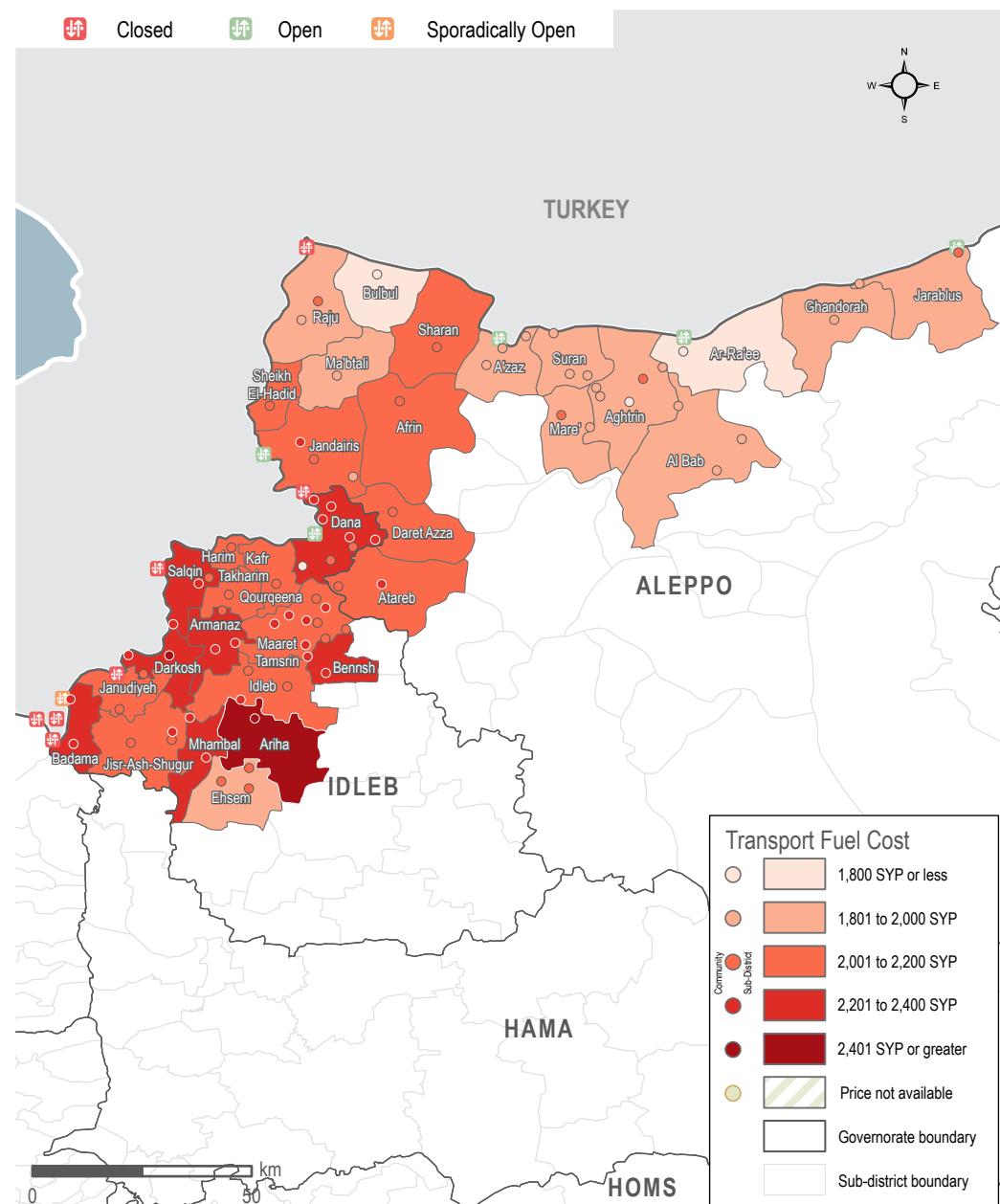
MEDIAN TRANSPORT FUEL COSTS, BY MONTH & TYPE

Syrian Pounds



TRANSPORT FUEL COST

Sub-districts & Communities, Syrian Pounds



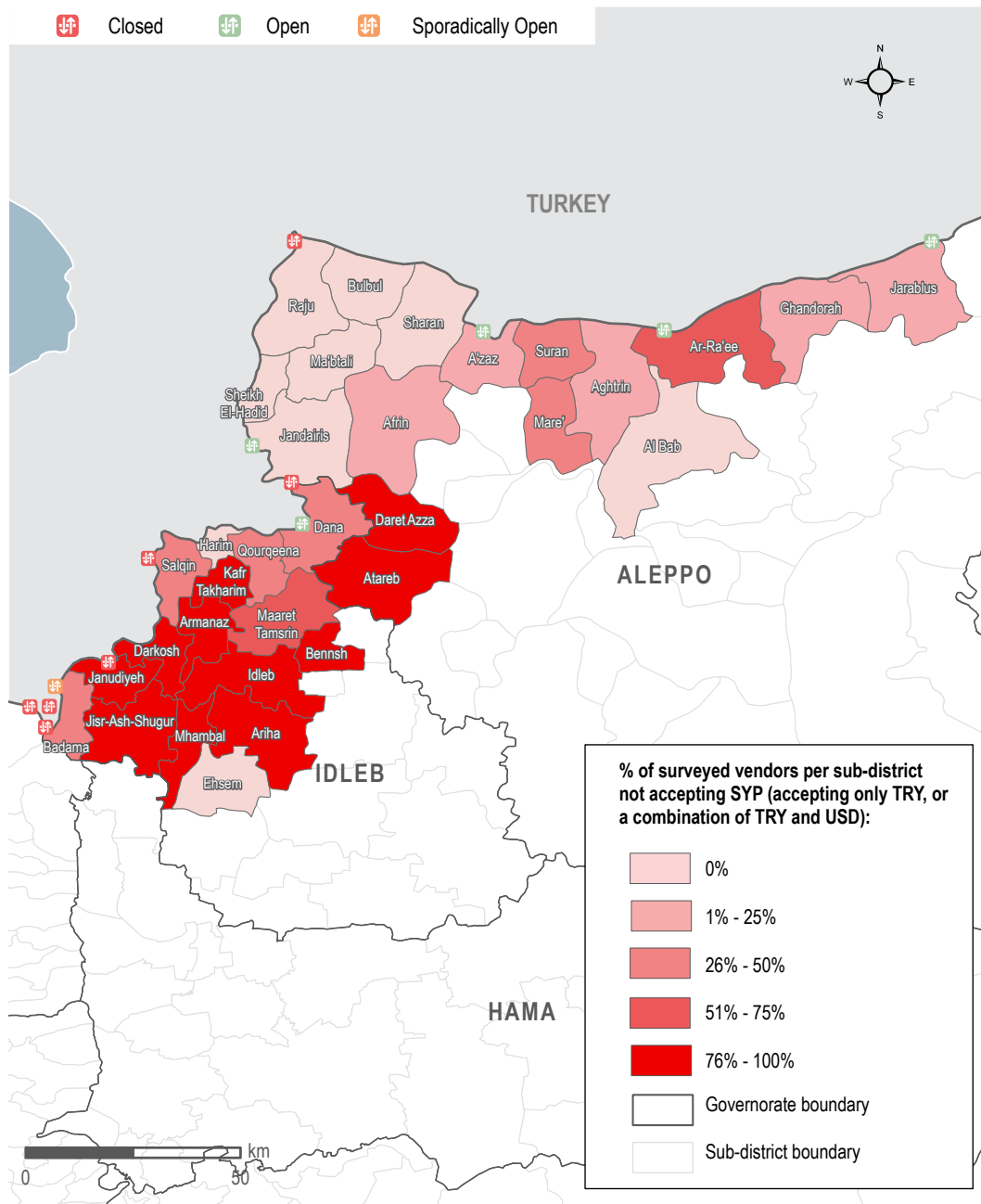
NORTHWEST SYRIA - MARKET FUNCTIONALITY



SURVEYED VENDORS NOT ACCEPTING SYRIAN POUNDS

Sub-districts

🚫 Closed
 🟢 Open
 🟡 Sporadically Open



MARKET FUNCTIONALITY

For a wider overview of the Syrian market context please see the [Humanitarian Needs Overview 2021](#)

Total surveyed vendors: 2,242

Surveyed vendors reported shop closure: 11 shops = 0.5% of all surveyed shops

All 11 of these shops were in Idleb

One month change: **increase of 0.4 percentage points (pp)**



SUPPLY CHALLENGES (SEE FIGURE 1)

Total surveyed vendors: 2,094

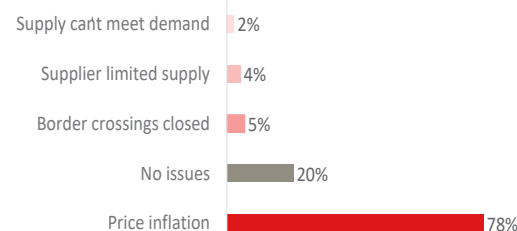
% of vendors who reported facing supply challenges: 80%

One month change for supply challenges: **decrease of 3 pp**

Most reported supply challenge: Price inflation 78%

One month change for price inflation: **decrease of 3 pp**

Figure 1: Most commonly reported supply challenges by all surveyed vendors (2,094 respondents)



RESTOCKING (SEE FIGURE 2)

Number of surveyed vendors who were asked if they would be unable to restock if they were to run out of supplies: 2,235

Surveyed vendors reporting that they would be unable to restock if they were to run out of supplies: 4 shops = 0.2% of all surveyed shops

One month change for restocking: **no change (0 pp)**

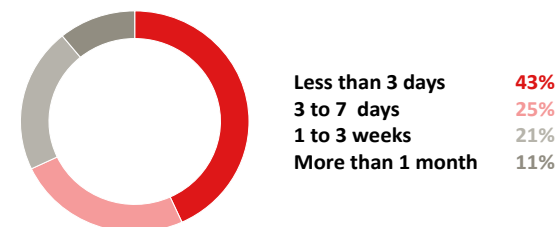
Surveyed vendors were asked after how many days they would hypothetically run out of stock if supplies were to be cut: Less than 3 days: 46%

One month change for less than 3 days: **increase of 2 pp**

Across shop types, surveyed water trucking vendors (79%), vegetable vendors (76%) and butchers (69%) most commonly reported that they would run out in less than 3 days if unable to restock.

Notably, 80% of water trucking vendors in Idleb and 76% of water trucking vendors in Aleppo reported that they would run out of supply in less than 3 days if supply lines were cut.

Figure 2: Reported number of days before all types of vendors would hypothetically run out of stock, if supply lines were to be cut (2,235 respondents)



AVAILABILITY OF USD BANKNOTES

Informal currency exchange vendors were asked about their stock levels for USD banknotes of different denominations.

Surveyed currency vendors: 213

Surveyed vendors reporting having limited stock of one or more USD denomination: 95%

One month change for limited stock of one or more denomination: **decrease of 1 pp**

The majority of surveyed vendors reported having a limited stock of all denominations of USD banknotes less than 100 USD. See the [June 2021 dataset](#) for further currency data.



CURRENCIES ACCEPTED

Aleppo: vendors most commonly reported selling items in both TRY and SYP (66%), and least commonly in TRY and USD (3%).

Idleb: vendors in Idleb most commonly reported selling items in TRY only (53%); and least commonly in SYP only (6%), or a mixture of TRY, SYP and USD (also 6%) (see map left, and below chart).

Currencies Accepted	SYP only	TRY & SYP	TRY & USD	TRY, SYP & USD	SYP not accepted
Northwest Syria	6%	39%	42%	7%	47%
Aleppo governorate	6%	19%	66%	3%	22%
Idleb governorate	6%	53%	26%	10%	63%

NORTHWEST SYRIA - COVID-19



MEDIAN PRICE OF COVID-19 ITEMS

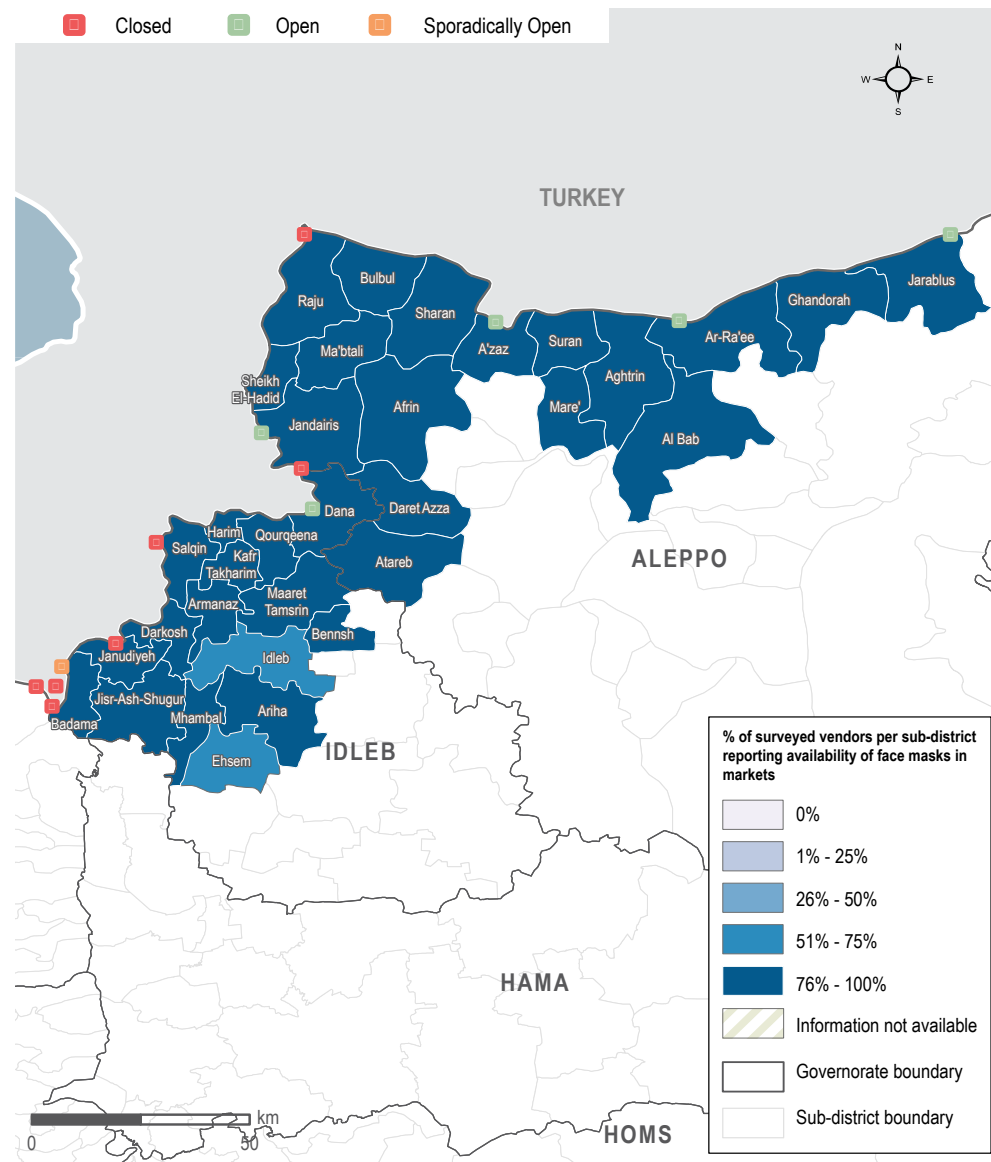
Syrian Pounds

Sub-district	Face mask (1 piece)	Plastic gloves (box of 100)	Sterile alcohol (1 litre)	Hand sanitiser (500 ml)	Bottled bleach (1 litre)	Trash bags (roll of 30)
Northwest Syria	370	20,800	7,594	3,888	1,585	3,075
Afrin	400	20,000	11,000	6,000	2,500	4,300
Aghtrin	365	25,000	7,300	2,500	1,600	2,300
Al Bab	365	25,000	7,500	2,200	1,818	2,936
Ariha	375	25,450*	NA	NA	1,850	NA
Armanaz	368	20,000	9,375	3,750	1,658	3,538
Ar-Ra'ee	400	20,500	9,400	3,100	1,500	2,500
Atareb	350	15,875	8,000	6,350	1,750	3,200
A'zaz	370	25,000	7,300	2,200	1,850	2,945
Badama	400	20,800	5,400	4,350	1,600	3,050
Bennsh	360	27,000	9,500	1,800	1,200	4,500
Bulbul	200	20,400	5,500	4,400	1,532	2,888
Dana	350	20,525	8,500	4,100	1,588	3,125
Daret Azza	370	22,000	7,000	3,500	1,650	2,800
Darkosh	300	20,475	18,900	6,600	1,480	3,600
Ehsem	200	20,100	5,450	3,775	1,500	3,000
Ghandorah	400	25,000	7,800	3,400	1,600	2,100
Harim	250	20,600	5,600	4,200	1,550	3,100
Idleb	400	20,825	8,900	4,000	1,300	3,300
Jandairis	375	24,000	6,000	4,300	1,350	3,200
Janudiyeh	350	20,000	5,500	4,300	1,600	NA
Jarablus	400	17,300	9,375	4,250	1,625	2,340
Jisr-Ash-Shugur	300	21,000	8,250	3,600	1,540	3,330
Kafr Takharim	400	18,500	8,800	3,700	1,500	3,000
Maaret Tamsrin	300	20,200	5,500	4,400	1,585	3,000
Ma'btali	400*	25,500*	9,400*	3,650*	1,200	3,500
Mare'	400	26,000	7,400	3,500	1,500	3,000
Mhambal	500	29,550	17,250	3,000	1,550	3,200
Qourqeena	275	20,200	5,425	4,300	1,425	3,025
Raju	375	21,250	9,750	3,500	1,125	NA
Salqin	400	20,000	7,688	4,000	1,600	3,500
Sharan	400*	20,400*	5,500*	4,400*	1,525	3,200
Sheikh El-Hadid	312	21,000*	5,600*	4,500	1,650	3,800
Suran	359	25,100	7,300	2,200	1,600	3,000



AVAILABILITY OF FACE MASKS

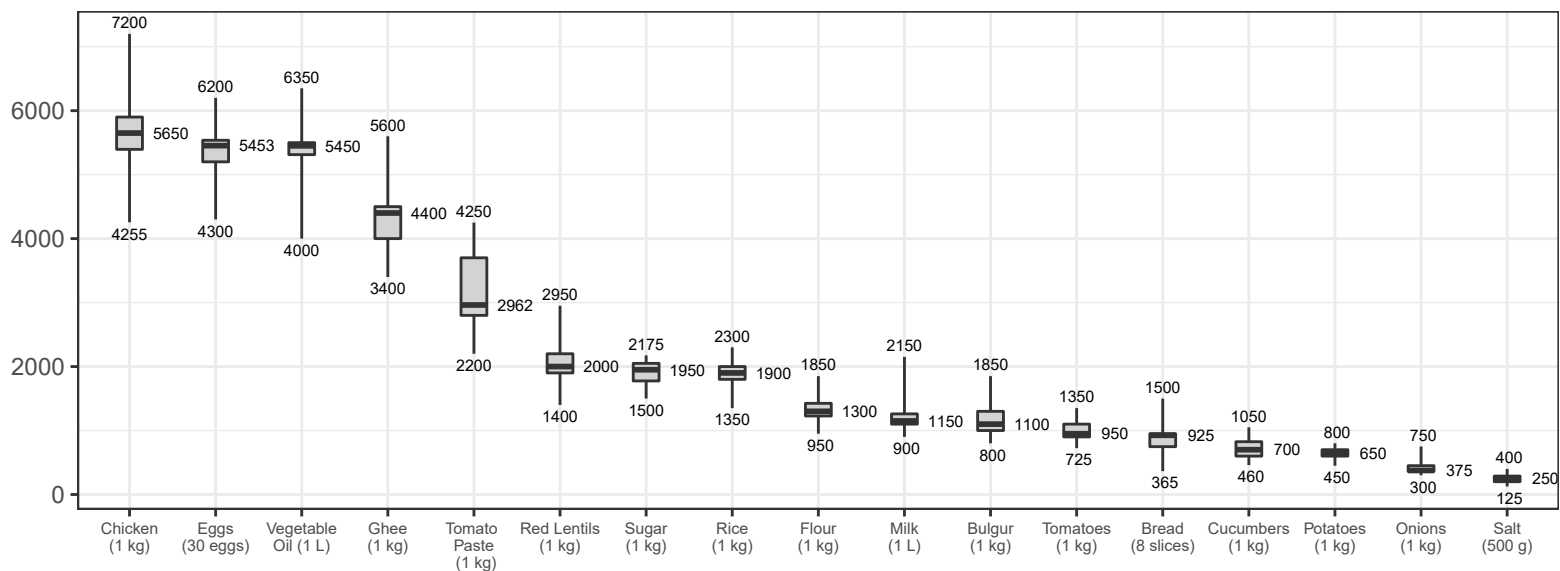
Sub-districts



NORTHWEST SYRIA - DISTRIBUTION OF PRICES

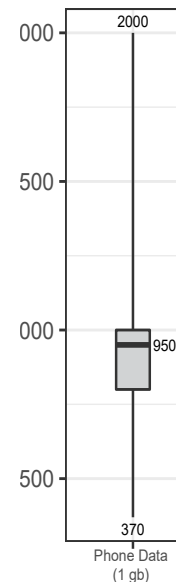
ASSESSED FOOD ITEMS

Syrian Pounds



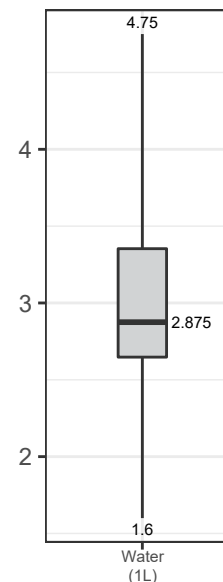
CELLPHONE DATA

Syrian Pounds



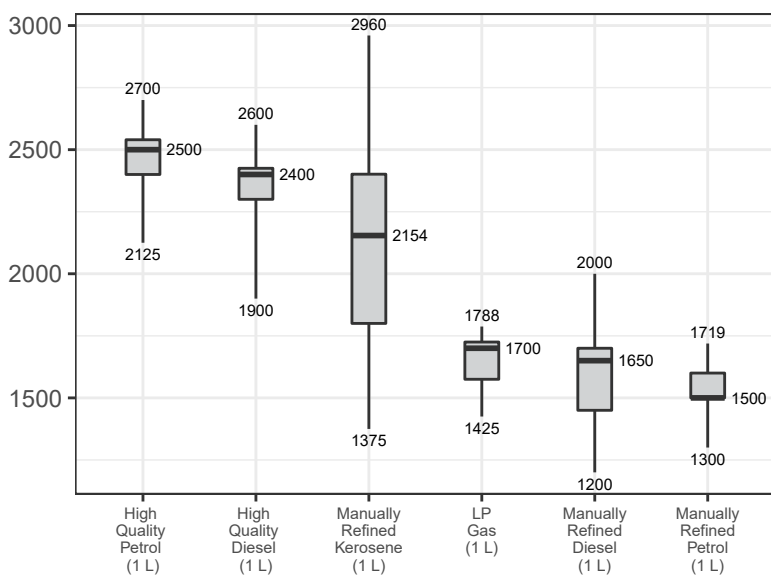
WATER TRUCKING

Syrian Pounds



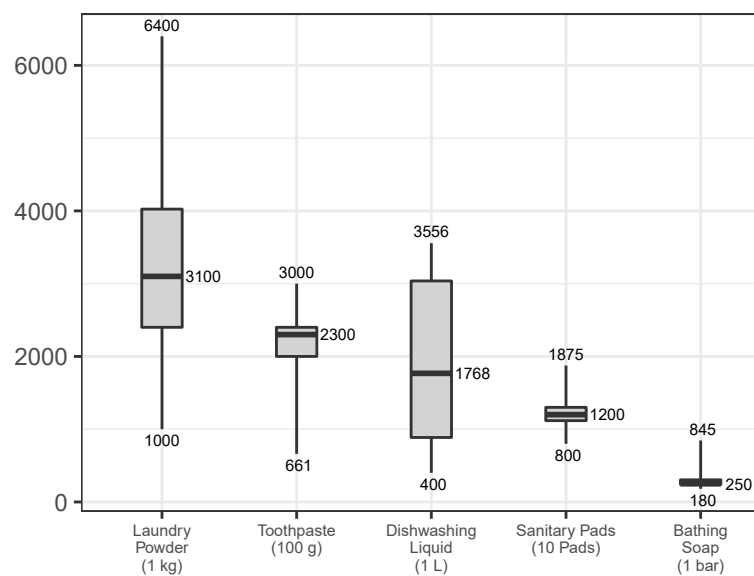
ASSESSED FUEL ITEMS

Syrian Pounds

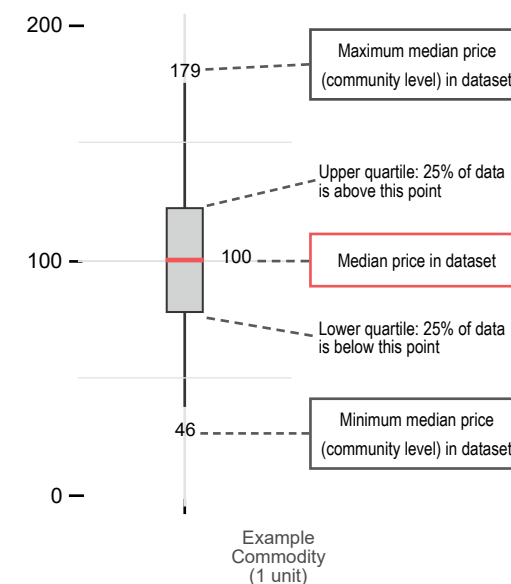


ASSESSED HYGIENE ITEMS

Syrian Pounds



READING BOXPLOTS



METHODOLOGY

In order to be included in the Syria Market Monitoring Exercise, markets must be permanent in nature, large enough to support at least two wholesalers, and diverse enough to provide a sufficient variety of goods and commodities. Additionally, the shops surveyed within each market must be housed in permanent structures and must sell certain items to be eligible for inclusion. Participating organisations train their enumerators on the Market Monitoring methodology and data collection tools using standard training materials developed by REACH. Each enumerator aims to assess three to five shops of each type in the main market in their assigned community/ neighbourhood, using surveys to collect information about the cheapest prices of each item and whether there are any barriers in the supply chain. In sub-districts where direct surveying by enumerators is not possible, data collection is conducted remotely through key informants such as shop owners, suppliers and consumers. A survey form is deployed on KoBo each month to capture price and stock information from different types of establishments, including grocery stores, fuel traders, currency exchange shops, water trucking services and mobile phone shops, among others. Nearly all participating partners submit their data to these KoBo forms, using the KoBoCollect Android app to upload data. A small number of partners, by prior permission, collect data using fully harmonised data collection tools deployed on other platforms, then submit their raw data to REACH for standardisation, compilation and cleaning.

Following data collection, REACH compiles and cleans all partners' data, normalising prices and cross-checking outliers. The cleaned data is then analysed by SMEB costs, components of the SMEB, and by commodities. These trends are observed at the sub-district-level and, when possible, at the community-level. Prices are divided into quartiles and boxplots are created

to assist CWG members in understanding the distribution of prices across the northeast and northwest of Syria. To illustrate local variations in prices and availability, REACH uses the collected data to map the price of the SMEB in each sub-district and adds illustrations of surrounding border crossings, with data sourced from the United Nations Office for the Coordination of Humanitarian Affairs (OCHA). In addition, each SMEB component costs and transport fuel prices are graphed to visualise trends over time.

The cleaned datasets are available on the [Humanitarian Data Exchange](#) website and the [REACH Resource Centre](#) and are distributed to all participating partners, as well as to interested clusters and the broader humanitarian community.

Calculating 'median cheapest price'

The regional figures are calculated by taking the median of the minimum-reported prices of a region's sub-districts. In turn, the sub-district medians are calculated using the Market Monitoring base-data.

Calculating Survival Minimum Expenditure Basket (SMEB) costs

The cost of a SMEB is calculated for each assessed sub-district by calculating the median cheapest price of each SMEB commodity in that sub-district, then multiplying these medians by the number of units that an average Syrian household requires to purchase in a month. The composition of the SMEB can be found on [page 2](#). SMEB vegetables include potatoes, tomatoes, onions, and cucumbers.

Calculating price trends over time

One month and six-month price changes and trends in this factsheet are calculated only with the comparable assessed communities of a sub-district with consistent coverage across months. On the other hand, in the dataset, medians are calculated taking all

assessed communities for the current month in consideration. Therefore, prices and percentage changes within the tables of this factsheet may slightly differ from the current month's dataset medians. In the narrative, both regional median SMEB values are shared; the SMEB value including all assessed communities that specific month, and the SMEB value only taking in consideration communities with consistent coverage since the previous month.

Changes to coverage

Given security and access constraints in the south of Syria, data collection has been unable to take place since July 2018. Escalation of conflict in October 2019 has resulted in limited coverage in northeast Syria in the months following the escalation.

Challenges and limitations

As the Syria Market Monitoring Exercise currently includes 26 partners based in 2 hubs, achieving a consistent approach is inherently challenging. Participating organisations are therefore requested to adopt harmonised data collection methodologies and tools to ensure that the data uploaded is as accurate as possible. Since this exercise collects data directly from vendors and relies on partner organisations for its wide coverage, Market Monitoring may sporadically lose coverage temporarily or for longer periods of time due to challenges in accessing locations or loss in the shared data collection capacity of the project. This impacts the ability to report on trends, as can be seen in the line graphs and 'NA' values in the tables.

ABOUT REACH

REACH Initiative facilitates the development of information tools and products that enhance the capacity of aid actors to make evidence-based decisions in emergency, recovery and development contexts. The methodologies used by REACH include primary data collection and in-depth analysis, and all activities are conducted through inter-agency aid coordination mechanisms. REACH is a joint initiative of IMPACT Initiatives, ACTED and the United Nations Institute for Training and Research - Operational Satellite Applications Programme (UNITAR-UNOSAT). For more information please visit our website:

www.reach-initiative.org. You can contact us directly at: geneva@reach-initiative.org and follow us on Twitter [@REACH_info](https://twitter.com/REACH_info)

ABOUT THE CASH WORKING GROUP

The Cash Working Group (CWG) was established in May 2014 to analyse the impact of the ongoing conflict on markets in Syria and guide the implementation of humanitarian cash and voucher programmes within those markets. REACH and the CWG have been partners on the Syria Market Monitoring Exercise since early 2015.

About REACH's COVID-19 response

As an initiative deployed in many vulnerable and crisis-affected countries, REACH is deeply concerned by the devastating impact the COVID-19 pandemic may have on the millions of affected people we seek to serve. REACH is currently working with Cash Working Groups and partners to scale up its programming in response to this pandemic, with the goal of identifying practical ways to inform humanitarian responses in the countries where we operate. COVID-19-relevant market monitoring and market assessments are a key area where REACH aims to leverage its existing expertise to help humanitarian actors understand the impact of changing restrictions on markets and trade. Updates regarding REACH's response to COVID-19 can be found in a [devoted thread](#) on the REACH website. Contact geneva@impact-initiatives.org for further information.