



Camp Profile: Arbat IDP

Sulaymaniyah governorate, Iraq
August 2018

Management agency:
Sulaymaniyah Governorate and JCC

Summary

This profile provides an overview of conditions in Arbat IDP camp. Primary data was collected through 62 randomly sampled household surveys between 2 July and 7 August 2018. Findings are statistically representative at the camp level with a 90% confidence level and 10% margin of error, with target sample sizes based on population figures provided by camp managers.¹ Additional information from camp managers has been used to support findings.

Camp Overview

Number of individuals: 1,780²

Number of households: 369²

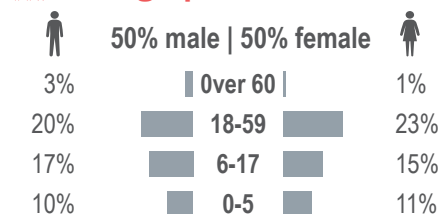
Date opened: 4/26/2016

Main shelter type: Tent

Planned capacity: 416

Camp area: 190,892m²

Demographics



Location Map



IDP Camp Map - Arbat IDP

Lat. 35° 25' 55.395" N Long. 45° 35' 24.967" E



Sectoral Minimum Standards

		Target	Previous Round	Current Round	
Education	% of children aged 6-11 attending formal school	100%	75%	90%	●
	% of children aged 12-17 attending formal school	100%	69%	74%	●
Food	% of households accessing Public Distribution Systems (PDS) in the month prior to data collection ³	100%	20%	94%	●
Health	Health services are available on-site or within walking distance (less than 5km)	Yes	Yes	Yes	●
CCCM	Average open area per household	min. 30m ²	275m ²	288m ²	●
Protection	% of households reported having at least one member with lost, damaged or expired documentation	0%	2%	23%	●
Shelter	Average covered area per person	min 3.5m ²	4.8m ²	5m ²	●
	Average number of individuals per shelter	max 5	5	4	●
WASH	# of persons per latrine	max. 20	4	4	●
	# of persons per shower	max. 20	4	4	●
	Frequency of solid waste disposal at least weekly	min. weekly	Yes	Yes	●

Targets based on minimum standards agreed with the CCCM Cluster, Iraq. Findings based on household-level data, enumerator field observations, and camp management documentation.

● Minimum standard reached, ● 50-99% of minimum standard reached, ● Less than 50% of minimum standard reached or not at all.

¹ Findings of a subset of the population may have a wider margin of error, with anything below a minimum confidence level of 90% and a margin of error of 10% considered indicative.

² Camp population and household figures from CCCM camp managers at time of data collection. The camp population as of September 2018 is 374 households and 1,799 individuals according to national CCCM cluster figures.

³ PDS rations do not necessarily include the full basket provided by the WFP Family Food Parcel or equivalent.



CCCM CLUSTER
SUPPORTING DISPLACED COMMUNITIES

REACH
Informing more effective humanitarian action



Camp Profile: Arbat IDP



Protection and Intentions

Vulnerable Groups

Proportion of population identified as vulnerable:

27% Pregnant/lactating women 5% Individuals with disabilities
18% Chronically ill individuals 23% Female-headed households

Movement Intentions

57% of households listed safety and security in their AoO as a priority need in order to return.

Freedom of Movement

100% reported being able to leave the camp temporarily (e.g. to go to the market for livelihood opportunities).



Information and Priority Needs

Top three information needs:^{*}

Accessing humanitarian assistance 80%
Information about returns 71%
Finding job opportunities 62%

Top three reported priority needs:^{*}

Food 58%
Employment 42%
Summer kits 37%



Shelter and NFIs

Of the 62% that reported concerns with their shelter, the top three needs were:^{*4}

Improve safety and security 68%
Protection from hazards 55%
Weather protection 53%

Of the 97% that reported NFI needs, the top three were:^{*}

Blankets 48%
Clothing 48%
Mattresses/sleeping mats 47%



Education

Reported attendance rates of formal education by age and sex:

76% male | 93% female
85% 6 - 11 96%
67% 12 - 17 88%

Of the 36% of households that reported their children **did not receive education** in the 30 days prior to data collection, the top three barriers included:^{*4}

- Child disinterested
- Education considered not important
- Cannot afford to pay

^{*}Respondents could select multiple needs or reasons. Therefore, results may exceed 100%.

^{*4}Findings are based on a small subset of the sample population and are therefore considered indicative rather than statistically generalizable to all in-camp households.

^{*}Food consumption score calculated according to United Nations World Food Programme most recent technical guidelines, as of February 2008.



Food Security and Livelihoods

Household Food Consumption Score (FCS)⁵



97% Acceptable
3% Borderline
0% Poor

Food Consumption Coping Strategies

68% of households reported using some form of consumption-based coping strategy in the 30 days prior to data collection. The most common of which were:^{*}

Spend savings 43%
Buy food on credit 40%
Sell assets 33%

Household Income and Expenditure

Median monthly household income: 310,000 IQD (260 USD)^{6,7}

Median monthly expenditure per household: 194,000 IQD (163 USD)⁶

36% of adults reported working in the 30 days prior to data collection.

Top three household income sources:^{*7}

Employment 81%
Support from community 34%
Savings 24%

Top three monthly household expenditures:^{*}

Food 49%
Transport 11%
NFIs 10%



WASH

Primary source of drinking water over the 7 days prior to data collection:^{*}

Network (private access) 100%

2% of households had access to public or communal latrines, and 98% had access to private latrines.^{*}

76% of households reported collection services as their main method of waste disposal.



Health

Of the 50% of households who required healthcare services in the three months prior to data collection, 42% reported facing barriers to access, with the top three barriers including:^{*4}

- High cost of healthcare
- No medicine in hospital
- Unqualified hospital staff

⁶Exchange rate of 1 USD: 1192.3 IQD, sourced from xe.com at 7/2/2018.

⁷Income includes multiple sources such as employment, savings, selling assistance, and receiving assistance.





Camp Profile: Ashti IDP

Sulaymaniyah governorate, Iraq
August 2018

Management agency: JCC

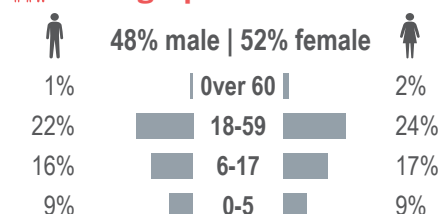
Summary

This profile provides an overview of conditions in Ashti IDP camp. Primary data was collected through 70 randomly sampled household surveys between 2 July and 7 August 2018. Findings are statistically representative at the camp level with a 90% confidence level and 10% margin of error, with target sample sizes based on population figures provided by camp managers.¹ Additional information from camp managers has been used to support findings.

Camp Overview

Number of individuals: 11,559²
Number of households: 2,401²
Date opened: 1/1/2017
Main shelter type: Tent
Planned capacity: 2,630
Camp area: 710,297m²

Demographics



Location Map



IDP Camp Map - Ashti IDP

Lat. 36° 17' 40.022" N Long. 45° 36' 21.359" E



Sectoral Minimum Standards

		Target	Previous Round	Current Round	
Education	% of children aged 6-11 attending formal school	100%	70%	82%	●
	% of children aged 12-17 attending formal school	100%	53%	63%	●
Food	% of households accessing Public Distribution Systems (PDS) in the month prior to data collection ³	100%	8%	64%	●
Health	Health services are available on-site or within walking distance (less than 5km)	Yes	Yes	Yes	●
CCCM	Average open area per household	min. 30m ²	244m ²	257m ²	●
Protection	% of households reported having at least one member with lost, damaged or expired documentation	0%	7%	13%	●
Shelter	Average covered area per person	min 3.5m ²	4.6m ²	4.8m ²	●
	Average number of individuals per shelter	max 5	5	5	●
WASH	# of persons per latrine	max. 20	5	4	●
	# of persons per shower	max. 20	5	4	●
	Frequency of solid waste disposal at least weekly	min. weekly	Yes	Yes	●

Targets based on minimum standards agreed with the CCCM Cluster, Iraq. Findings based on household-level data, enumerator field observations, and camp management documentation.

● Minimum standard reached, ● 50-99% of minimum standard reached, ● Less than 50% of minimum standard reached or not at all.

¹Findings of a subset of the population may have a wider margin of error, with anything below a minimum confidence level of 90% and a margin of error of 10% considered indicative.

²Camp population and household figures from CCCM camp managers at time of data collection. The camp population as of September 2018 is 2,385 households and 11,519 individuals according to national CCCM cluster figures.

³PDS rations do not necessarily include the full basket provided by the WFP Family Food Parcel or equivalent.



CCCM CLUSTER
SUPPORTING DISPLACED COMMUNITIES

REACH
Informing more effective humanitarian action



Camp Profile: Ashti IDP



Protection and Intentions

Vulnerable Groups

Proportion of population identified as vulnerable:

19% Pregnant/lactating women 3% Individuals with disabilities
10% Chronically ill individuals 34% Female-headed households

Movement Intentions

79% of households listed safety and security in their AoO as a priority need in order to return.

Freedom of Movement

100% reported being able to leave the camp temporarily (e.g. to go to the market for livelihood opportunities).



Information and Priority Needs

Top three information needs:^{*}

Accessing humanitarian assistance 82%
Information about returns 78%
Finding job opportunities 78%

Top three reported priority needs:^{*}

Food 77%
Employment 53%
Summer kits 46%



Shelter and NFIs

Of the 64% that reported concerns with their shelter, the top three needs were:^{*4}

Improve safety and security 98%
Weather protection 69%
Improve privacy and dignity 58%

Of the 99% that reported NFI needs, the top three were:^{*}

Mattresses/sleeping mats 78%
Blankets 75%
Clothing 49%



Education

Reported attendance rates of formal education by age and sex:

70% male | 73% female
80% 6 - 11 84%
62% 12 - 17 64%

Of the 52% of households that reported their children **did not receive education** in the 30 days prior to data collection, the top three barriers included:^{*4}

- Cannot afford to pay
- Recently displaced
- Child disinterested

^{*}Respondents could select multiple needs or reasons. Therefore, results may exceed 100%.

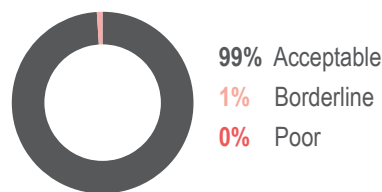
^{*4}Findings are based on a small subset of the sample population and are therefore considered indicative rather than statistically generalizable to all in-camp households.

⁵Food consumption score calculated according to United Nations World Food Programme most recent technical guidelines, as of February 2008.



Food Security and Livelihoods

Household Food Consumption Score (FCS)⁵



Food Consumption Coping Strategies

41% of households reported using some form of consumption-based coping strategy in the 30 days prior to data collection. The most common of which were:^{*}

Spend savings 45%
Sell assets 31%
Child dropping out of school 31%

Household Income and Expenditure

Median monthly household income: 400,000 IQD (336 USD)^{6,7}

Median monthly expenditure per household: 157,750 IQD (132 USD)⁶

39% of adults reported working in the 30 days prior to data collection.

Top three household income sources:^{*7}

Employment 89%
Support from community 33%
NGO/charity assistance 33%

Top three monthly household expenditures:^{*}

Food 54%
Transport 11%
NFIs 11%



WASH

Primary source of drinking water over the 7 days prior to data collection:^{*}

Network (private access) 100%

1% of households had access to public or communal latrines, and 100% had access to private latrines.^{*}

100% of households reported collection services as their main method of waste disposal.



Health

Of the 51% of households who required healthcare services in the three months prior to data collection, 17% reported facing barriers to access, with the top three barriers including:^{*4}

- High cost of medicines
- High cost of healthcare
- No medicine in hospital

⁶Exchange rate of 1 USD: 1192.3 IQD, sourced from [xe.com](https://www.xe.com) at 7/2/2018.

⁷Income includes multiple sources such as employment, savings, selling assistance, and receiving assistance.





Camp Profile: Surdesh

Sulaymaniyah governorate, Iraq
August 2018

Management agency:
Sulaymaniyah Governorate and JCC

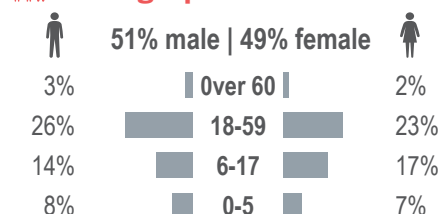
Summary

This profile provides an overview of conditions in Surdesh camp. Primary data was collected through 57 randomly sampled household surveys between 2 July and 7 August 2018. Findings are statistically representative at the camp level with a 90% confidence level and 10% margin of error, with target sample sizes based on population figures provided by camp managers.¹ Additional information from camp managers has been used to support findings.

Camp Overview

Number of individuals: 1,180²
Number of households: 240²
Date opened: 7/22/2014
Main shelter type: Caravan
Planned capacity: 400
Camp area: 96,356m²

Demographics



Location Map



IDP Camp Map - Surdesh

Lat.35° 51' 8.29" N Long. 45° 5' 27.81" E



Sectoral Minimum Standards

		Target	Previous Round ³	Current Round	
Education	% of children aged 6-11 attending formal school	100%	N/A	93%	●
	% of children aged 12-17 attending formal school	100%	N/A	83%	●
Food	% of households accessing Public Distribution Systems (PDS) in the month prior to data collection ⁴	100%	N/A	61%	●
Health	Health services are available on-site or within walking distance (less than 5km)	Yes	N/A	Yes	●
CCCM	Average open area per household	min. 30m ²	N/A	330m ²	●
Protection	% of households reported having at least one member with lost, damaged or expired documentation	0%	N/A	5%	●
Shelter	Average covered area per person	min 3.5m ²	N/A	5.5m ²	●
	Average number of individuals per shelter	max 5	N/A	4	●
WASH	# of persons per latrine	max. 20	N/A	3	●
	# of persons per shower	max. 20	N/A	3	●
	Frequency of solid waste disposal at least weekly	min. weekly	N/A	Yes	●

Targets based on minimum standards agreed with the CCCM Cluster, Iraq. Findings based on household-level data, enumerator field observations, and camp management documentation.

● Minimum standard reached, ● 50-99% of minimum standard reached, ● Less than 50% of minimum standard reached or not at all.

¹Findings of a subset of the population may have a wider margin of error, with anything below a minimum confidence level of 90% and a margin of error of 10% considered indicative.

²Camp population and household figures from CCCM camp managers at time of data collection. The camp population as of September 2018 is 177 households and 842 individuals according to national CCCM cluster figures.

³We do not have representative data from the previous round, as this camp was not assessed due to having less than 100 households.

⁴PDS rations do not necessarily include the full basket provided by the WFP Family Food Parcel or equivalent.



CCCM CLUSTER
SUPPORTING DISPLACED COMMUNITIES

REACH
Informing more effective humanitarian action



Camp Profile: Surdesh



Protection and Intentions

Vulnerable Groups

Proportion of population identified as vulnerable:

11% Pregnant/lactating women **5%** Individuals with disabilities
16% Chronically ill individuals **19%** Female-headed households

Movement Intentions

96% of households listed safety and security in their AoO as a priority need in order to return.

Freedom of Movement

100% reported being able to leave the camp temporarily (e.g. to go to the market for livelihood opportunities).



Information and Priority Needs

Top three information needs:^{*}

Accessing humanitarian assistance **98%**
Finding job opportunities **79%**
Information about returns **62%**

Top three reported priority needs:^{*}

Food **91%**
Employment **58%**
Healthcare **44%**



Shelter and NFIs

Of the 18% that reported concerns with their shelter, the top three needs were:^{*5}

Weather protection **90%**
Improve safety and security **90%**
Improve privacy and dignity **50%**

Of the 98% that reported NFI needs, the top three were:^{*}

Mattresses/sleeping mats **64%**
Blankets **64%**
Soft bedding items **63%**



Education

Reported attendance rates of formal education by age and sex:

95% male | 82% female

100% **6 - 11** **86%**
89% **12 - 17** **79%**

Of the **24%** of households that reported their children **did not receive education** in the 30 days prior to data collection, the top three barriers included:^{*5}

- Child stays at home to assist with household chores
- Child disabled
- Child disinterested

^{*}Respondents could select multiple needs or reasons. Therefore, results may exceed 100%.

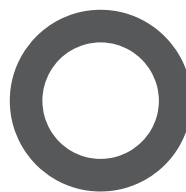
^{*5}Findings are based on a small subset of the sample population and are therefore considered indicative rather than statistically generalizable to all in-camp households.

^{*6}Food consumption score calculated according to United Nations World Food Programme most recent technical guidelines, as of February 2008.



Food Security and Livelihoods

Household Food Consumption Score (FCS)⁶



100% Acceptable
0% Borderline
0% Poor

Food Consumption Coping Strategies

60% of households reported using some form of consumption-based coping strategy in the 30 days prior to data collection. The most common of which were:^{*}

Spend savings **62%**
Sell assets **44%**
Buy food on credit **35%**

Household Income and Expenditure

Median monthly household income: **400,000 IQD (336 USD)^{7,8}**

Median monthly expenditure per household: **250,000 IQD (210 USD)⁷**

36% of adults reported working in the 30 days prior to data collection.

Top three household income sources:^{*8}

Employment **84%**
Support from community **39%**
Savings **35%**

Top three monthly household expenditures:^{*}

Food **52%**
NFIs **13%**
Transport **13%**



WASH

Top two primary sources of drinking water over the 7 days prior to data collection:^{*}

Water trucking **65%**
Network (private access) **35%**

0% of households had access to public or communal latrines, and 100% had access to private latrines.^{*}

100% of households reported collection services as their main method of waste disposal.



Health

Of the 46% of households who required healthcare services in the three months prior to data collection, **69% reported facing barriers to access**, with the top three barriers including:^{*5}

- High cost of medicines
- High cost of healthcare
- Unqualified hospital staff

⁷Exchange rate of 1 USD: 1192.3 IQD, sourced from xe.com at 7/2/2018.

^{*8}Income includes multiple sources such as employment, savings, selling assistance, and receiving assistance.



CCCM CLUSTER
SUPPORTING DISPLACED COMMUNITIES

REACH Informing more effective humanitarian action



Camp Profile: Tazade

Sulaymaniyah governorate, Iraq
August 2018

Management agency: YAO Organization

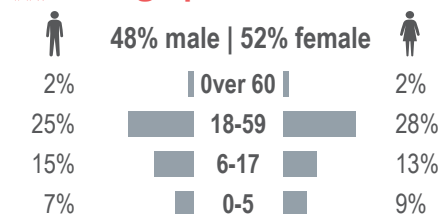
Summary

This profile provides an overview of conditions in Tazade camp. Primary data was collected through 61 randomly sampled household surveys between 2 July and 7 August 2018. Findings are statistically representative at the camp level with a 90% confidence level and 10% margin of error, with target sample sizes based on population figures provided by camp managers.¹ Additional information from camp managers has been used to support findings.

Camp Overview

Number of individuals: 1,664²
Number of households: 367²
Date opened: 12/30/2014
Main shelter type: Caravan
Planned capacity: 995
Camp area: 140,984m²

Demographics

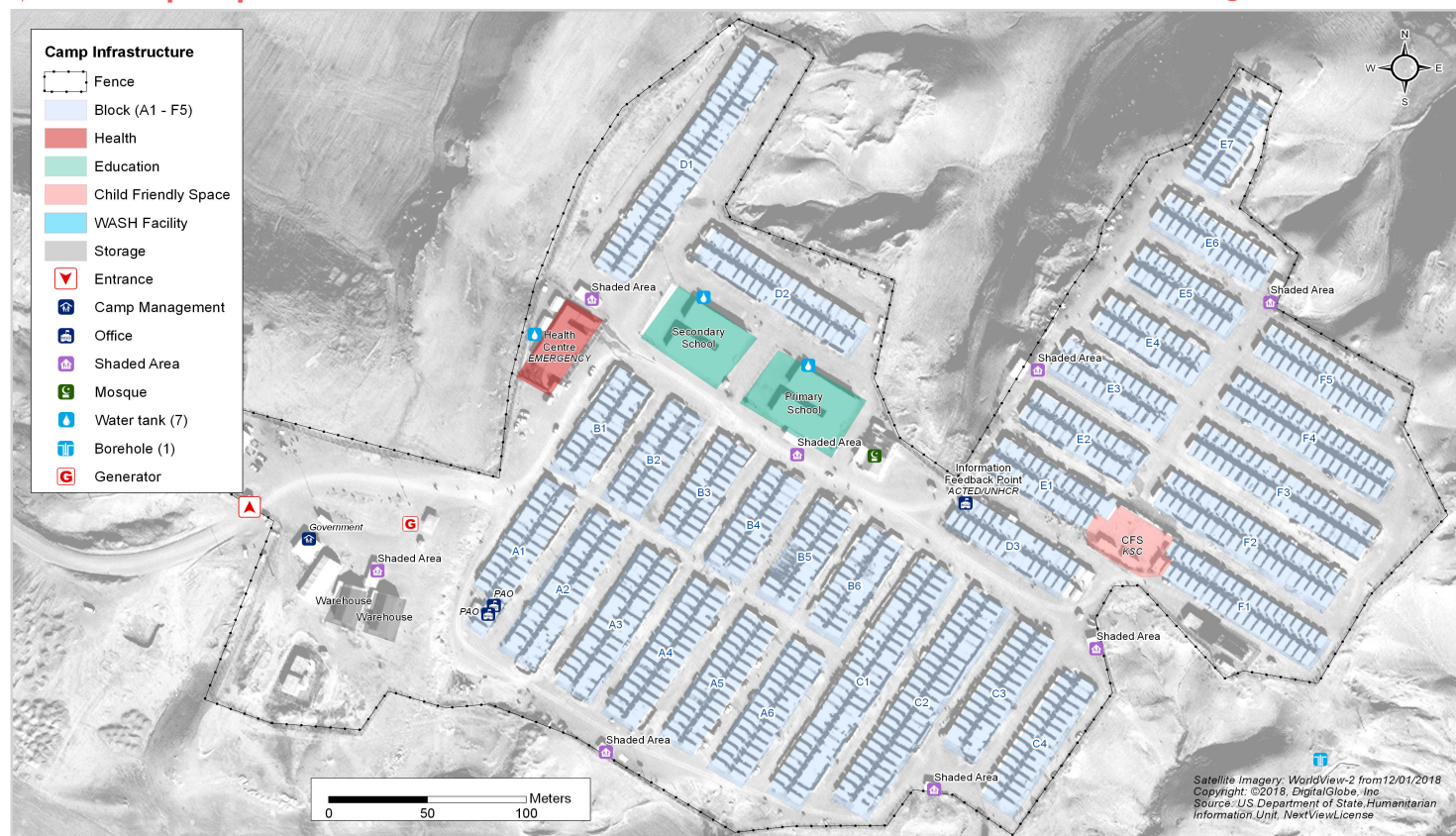


Location Map



IDP Camp Map - Tazade

Lat. 34° 42' 20.175" N Long. 45° 26' 55.56" E



Sectoral Minimum Standards

		Target	Previous Round	Current Round	
Education	% of children aged 6-11 attending formal school	100%	83%	89%	●
	% of children aged 12-17 attending formal school	100%	53%	68%	●
Food	% of households accessing Public Distribution Systems (PDS) in the month prior to data collection ³	100%	73%	35%	●
Health	Health services are available on-site or within walking distance (less than 5km)	Yes	Yes	Yes	●
CCCM	Average open area per household	min. 30m ²	208m ²	317m ²	●
Protection	% of households reported having at least one member with lost, damaged or expired documentation	0%	2%	0%	●
Shelter	Average covered area per person	min 3.5m ²	3.7m ²	4.1m ²	●
	Average number of individuals per shelter	max 5	4	3	●
WASH	# of persons per latrine	max. 20	3	2	●
	# of persons per shower	max. 20	3	2	●
	Frequency of solid waste disposal at least weekly	min. weekly	Yes	Yes	●

Targets based on minimum standards agreed with the CCCM Cluster, Iraq. Findings based on household-level data, enumerator field observations, and camp management documentation.

● Minimum standard reached, ● 50-99% of minimum standard reached, ● Less than 50% of minimum standard reached or not at all.

¹Findings of a subset of the population may have a wider margin of error, with anything below a minimum confidence level of 90% and a margin of error of 10% considered indicative.

²Camp population and household figures from CCCM camp managers at time of data collection. The camp population as of September 2018 is 347 households and 1,582 individuals according to national CCCM cluster figures.

³PDS rations do not necessarily include the full basket provided by the WFP Family Food Parcel or equivalent.



CCCM CLUSTER
SUPPORTING DISPLACED COMMUNITIES

REACH
Informing more effective humanitarian action



Camp Profile: Tazade



Protection and Intentions

Vulnerable Groups

Proportion of population identified as vulnerable:

- 11% Pregnant/lactating women
- 1% Individuals with disabilities
- 3% Chronically ill individuals
- 16% Female-headed households

Movement Intentions

92% of households listed safety and security in their AoO as a priority need in order to return.

Freedom of Movement

93% reported being able to leave the camp temporarily (e.g. to go to the market for livelihood opportunities).



Information and Priority Needs

Top three information needs:^{*}

- Finding job opportunities 60%
- Information about returns 42%
- Accessing humanitarian assistance 42%

Top three reported priority needs:^{*}

- Food 97%
- Employment 62%
- Healthcare 50%



Shelter and NFIs

Of the 33% that reported concerns with their shelter, the top three needs were:^{*4}

- Protection from hazards 56%
- Improve basic utilities 33%
- Weather protection 6%

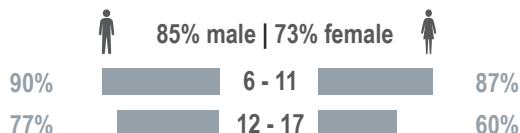
Of the 100% that reported NFI needs, the top three were:^{*}

- Air water cooler 80%
- Fan 62%
- Clothing 29%



Education

Reported attendance rates of formal education by age and sex:



Of the 23% of households that reported their children **did not receive education** in the 30 days prior to data collection, the top three barriers included:^{*4}

- Cannot afford to pay
- Child stays at home to assist with household chores
- N/A

^{*}Respondents could select multiple needs or reasons. Therefore, results may exceed 100%.

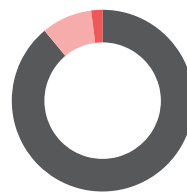
^{*4}Findings are based on a small subset of the sample population and are therefore considered indicative rather than statistically generalizable to all in-camp households.

⁵Food consumption score calculated according to United Nations World Food Programme most recent technical guidelines, as of February 2008.



Food Security and Livelihoods

Household Food Consumption Score (FCS)⁵



- 89% Acceptable
- 9% Borderline
- 2% Poor

Food Consumption Coping Strategies

55% of households reported using some form of consumption-based coping strategy in the 30 days prior to data collection. The most common of which were:^{*}

- Spend savings 93%
- Sell assets 87%
- Buy food on credit 73%

Household Income and Expenditure

Median monthly household income: 320,000 IQD (268 USD)^{6,7}

Median monthly expenditure per household: 230,000 IQD (193 USD)^{6,7}

45% of adults reported working in the 30 days prior to data collection.

Top three household income sources:^{*7}

- Employment 87%
- Retirement pension 7%
- Savings 5%

Top three monthly household expenditures:^{*}

- Food 55%
- NFIs 14%
- Medical care 10%



WASH

Top two primary sources of drinking water over the 7 days prior to data collection:^{*}

- Network (private access) 93%
- Purchased from shop 7%

2% of households had access to public or communal latrines, and 98% had access to private latrines.^{*}

82% of households reported collection services as their main method of waste disposal.



Health

Of the 29% of households who required healthcare services in the three months prior to data collection, **94% reported facing barriers to access**, with the top three barriers including:^{*4}

- High cost of healthcare
- No medicine in hospital
- Unqualified hospital staff

⁶Exchange rate of 1 USD: 1192.3 IQD, sourced from xe.com at 7/2/2018.

⁷Income includes multiple sources such as employment, savings, selling assistance, and receiving assistance.

