

Introduction

While an estimated 2.1 million people live in displacement sites in Somalia¹, existing information on exact locations and site level vulnerabilities is sparse, and existing assessments have been ad-hoc and unharmonised, resulting in low comparability and verification.

The Detailed Site Assessment (DSA) was triggered in coordination with the Camp Coordination and Camp Management (CCCM) Cluster in order to provide the humanitarian community with up-to-date information on location of internally displaced persons (IDP) sites, the conditions and capacity of the sites and the humanitarian needs of the residents.

Target locations for assessment were selected based on needs identified by the CCCM Cluster

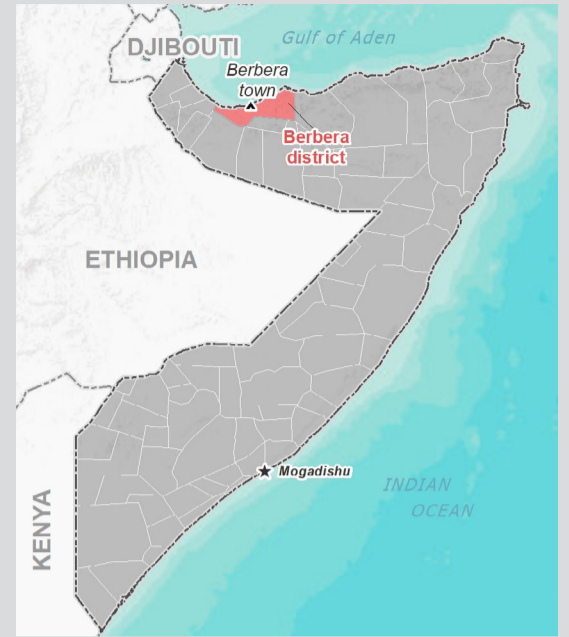
and accessibility for data collection.

A grid pattern approach² was applied during data collection to ensure that all IDP sites in the target area were identified. In each site, two key informant (KI) interviews were conducted: one with the site manager or community leader and one with a women's representative to ensure the perspectives of different groups were captured³. KI responses were aggregated to give one response per question per site.

This factsheet presents a summary of Sabawanaag Site profile along with the needs and priorities of IDPs residing in the site. As the data is captured through KIs, findings should be considered indicative only.

Date assessed: **Dec - 2017**

Location map



Assessed IDP sites in Berbera

Coordinates: Lat. 10.446, Long. 45.017



1. United Nations High Commissioner for Refugees (UNHCR): Protection & Return Monitoring Network (PRMN), September 2017
 2. For each target location, the area was divided into 1km² grids. Enumerator teams then visited each grid to verify whether an IDP site was present. By visiting all grids, teams were able to determine the total number of sites in each location.
 3. Where KI responses were significantly divergent, these were verified with the respective KIs with a higher reliability accorded to the response provided by the site manager or community leader.



Site Information

Settlement type	Spontaneous site
Estimated number of individuals	7,500
Estimated number of households	1,500
Site capacity reached	No
Responsible management agency	Residents
Date when most site residents arrived	Dec-16
Site owner	Private

Protection

Number of vulnerable households:	
Female-headed households	900
Child-headed households	0
Elderly individuals ⁴	1,300
Unaccompanied children	10
Individuals with a physical disability	0
Presence of shared community space	No
Presence of separate space for women/girls	Yes
Presence of child friendly space	No
Public lighting in the site	No
Type of landownership	Informal
Risk of eviction in next three months	yes

WASH

Access to potable water	No
Number of latrines in the site:	
Latrines (mixed)	40
Latrines (male)	0
Latrines (female)	0
Access to handwashing facilities	No

Shelter and Non-Food Items (NFIs)

Most common shelter types in the site⁵:	
1. Buul	
2. Wattle and Daub	
3. CGI	
Electricity available in the site	No
Access to a NFI market	Yes
Average walking time to the nearest NFI market	15 minutes
Perceived safe access to NFI market	Yes

Displacement

Estimated number of households per displacement group:	
IDPs	1,050
Host community/ non-displaced	450
IDP households arrived in the past 3 months	300
Most common areas of origin:	
First area of origin	Woqooyi Galbeed
Second area of origin	Togdheer
Third area of origin	Sool

Food Security

Primary source of food	Market purchase
Food distributions	None
Access to a food market	Yes

Health and Nutrition

Most common health issue(s) reported in the site:	
1. None	
2. N/A	
3. N/A	
Access to healthcare services	No
Average walking time to the nearest health service	N/A
Women give birth in the site	Yes
Access to nutrition services	No
Average walking time to the nearest nutrition service	N/A
Access to nutrition services:	No

Education

Education services available	No
Average walking time to the nearest school	N/A
Education facilities available to residents in the site⁵:	
1. N/A	
2. N/A	
3. N/A	

Communication

Three most trusted sources of information⁵:	
1. Friends, neighbours and family	
2. Community leader	
3. Aid worker	
Most commonly spoken language	Somali Standard

4. More than 60 years old.

5. Key informants could select multiple responses.



Introduction

While an estimated 2.1 million people live in displacement sites in Somalia¹, existing information on exact locations and site level vulnerabilities is sparse, and existing assessments have been ad-hoc and unharmonised, resulting in low comparability and verification.

The Detailed Site Assessment (DSA) was triggered in coordination with the Camp Coordination and Camp Management (CCCM) Cluster in order to provide the humanitarian community with up-to-date information on location of internally displaced persons (IDP) sites, the conditions and capacity of the sites and the humanitarian needs of the residents.

Target locations for assessment were selected based on needs identified by the CCCM Cluster

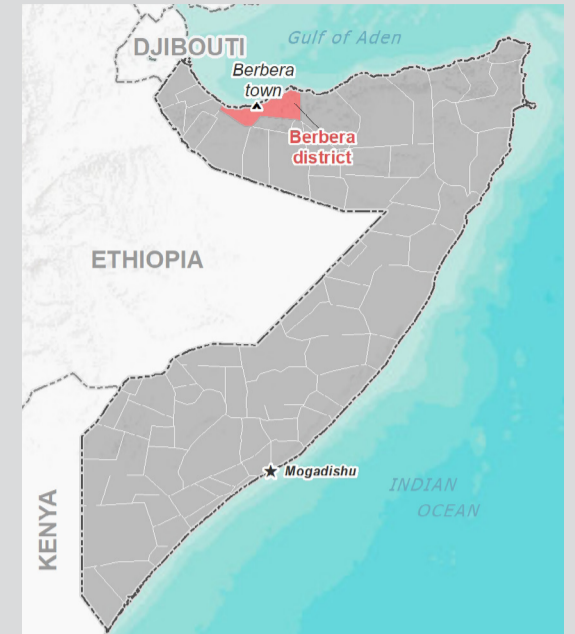
and accessibility for data collection.

A grid pattern approach² was applied during data collection to ensure that all IDP sites in the target area were identified. In each site, two key informant (KI) interviews were conducted: one with the site manager or community leader and one with a women's representative to ensure the perspectives of different groups were captured³. KI responses were aggregated to give one response per question per site.

This factsheet presents a summary of Batalale Site profile along with the needs and priorities of IDPs residing in the site. As the data is captured through KIs, findings should be considered indicative only.

Date assessed: **Dec - 2017**

Location map



Assessed IDP sites in Berbera

Coordinates: Lat. 10.44505, Long. 45.0261



1. United Nations High Commissioner for Refugees (UNHCR): Protection & Return Monitoring Network (PRMN), September 2017
 2. For each target location, the area was divided into 1km² grids. Enumerator teams then visited each grid to verify whether an IDP site was present. By visiting all grids, teams were able to determine the total number of sites in each location.
 3. Where KI responses were significantly divergent, these were verified with the respective KIs with a higher reliability accorded to the response provided by the site manager or community leader.





Site Information

Settlement type	Planned site
Estimated number of individuals	1,700
Estimated number of households	450
Site capacity reached	Yes
Responsible management agency	Local Ngo
Date when most site residents arrived	Mar-16
Site owner	None

Protection

Number of vulnerable households:	
Female-headed households	50
Child-headed households	0
Elderly individuals ⁴	400
Unaccompanied children	0
Individuals with a physical disability	0
Presence of shared community space	No
Presence of separate space for women/girls	No
Presence of child friendly space	No
Public lighting in the site	No
Type of landownership	N/A
Risk of eviction in next three months	yes

WASH

Access to potable water	No
Number of latrines in the site:	
Latrines (mixed)	35
Latrines (male)	0
Latrines (female)	0
Access to handwashing facilities	No

Shelter and Non-Food Items (NFIs)

Most common shelter types in the site⁵:	
1. Buul	
2. CGI	
3. N/A	
Electricity available in the site	No
Access to a NFI market	Yes
Average walking time to the nearest NFI market	30 minutes
Perceived safe access to NFI market	Yes

Displacement

Estimated number of households per displacement group:	
IDPs	450
Host community/ non-displaced	0
IDP households arrived in the past 3 months	4
Most common areas of origin:	
First area of origin	Woqooyi Galbeed
Second area of origin	Togdheer
Third area of origin	N/A

Food Security

Primary source of food	Market purchase
Food distributions	Less than montly
Access to a food market	Yes

Health and Nutrition

Most common health issue(s) reported in the site:	
1. None	
2. N/A	
3. N/A	
Access to healthcare services	No
Average walking time to the nearest health service	N/A
Women give birth in the site	Yes
Access to nutrition services	No
Average walking time to the nearest nutrition service	N/A
Access to nutrition services:	No

Education

Education services available	Yes
Average walking time to the nearest school	35 minutes
Education facilities available to residents in the site⁵:	
1. Primary	
2. Quranic	
3. N/A	

Communication

Three most trusted sources of information⁵:	
1. Friends, neighbours and family	
2. Community leader	
3. Aid worker	
Most commonly spoken language	Somali Standard

4. More than 60 years old.

5. Key informants could select multiple responses.



Introduction

While an estimated 2.1 million people live in displacement sites in Somalia¹, existing information on exact locations and site level vulnerabilities is sparse, and existing assessments have been ad-hoc and unharmonised, resulting in low comparability and verification.

The Detailed Site Assessment (DSA) was triggered in coordination with the Camp Coordination and Camp Management (CCCM) Cluster in order to provide the humanitarian community with up-to-date information on location of internally displaced persons (IDP) sites, the conditions and capacity of the sites and the humanitarian needs of the residents.

Target locations for assessment were selected based on needs identified by the CCCM Cluster

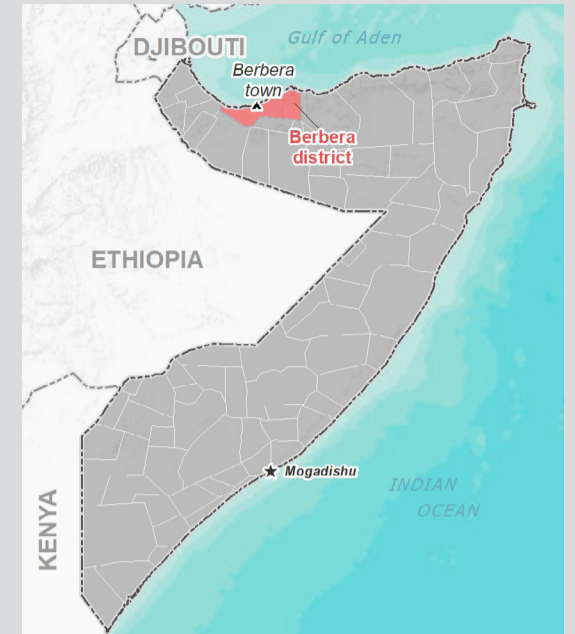
and accessibility for data collection.

A grid pattern approach² was applied during data collection to ensure that all IDP sites in the target area were identified. In each site, two key informant (KI) interviews were conducted: one with the site manager or community leader and one with a women's representative to ensure the perspectives of different groups were captured³. KI responses were aggregated to give one response per question per site.

This factsheet presents a summary of Waraabo u taag Site profile along with the needs and priorities of IDPs residing in the site. As the data is captured through KIs, findings should be considered indicative only.

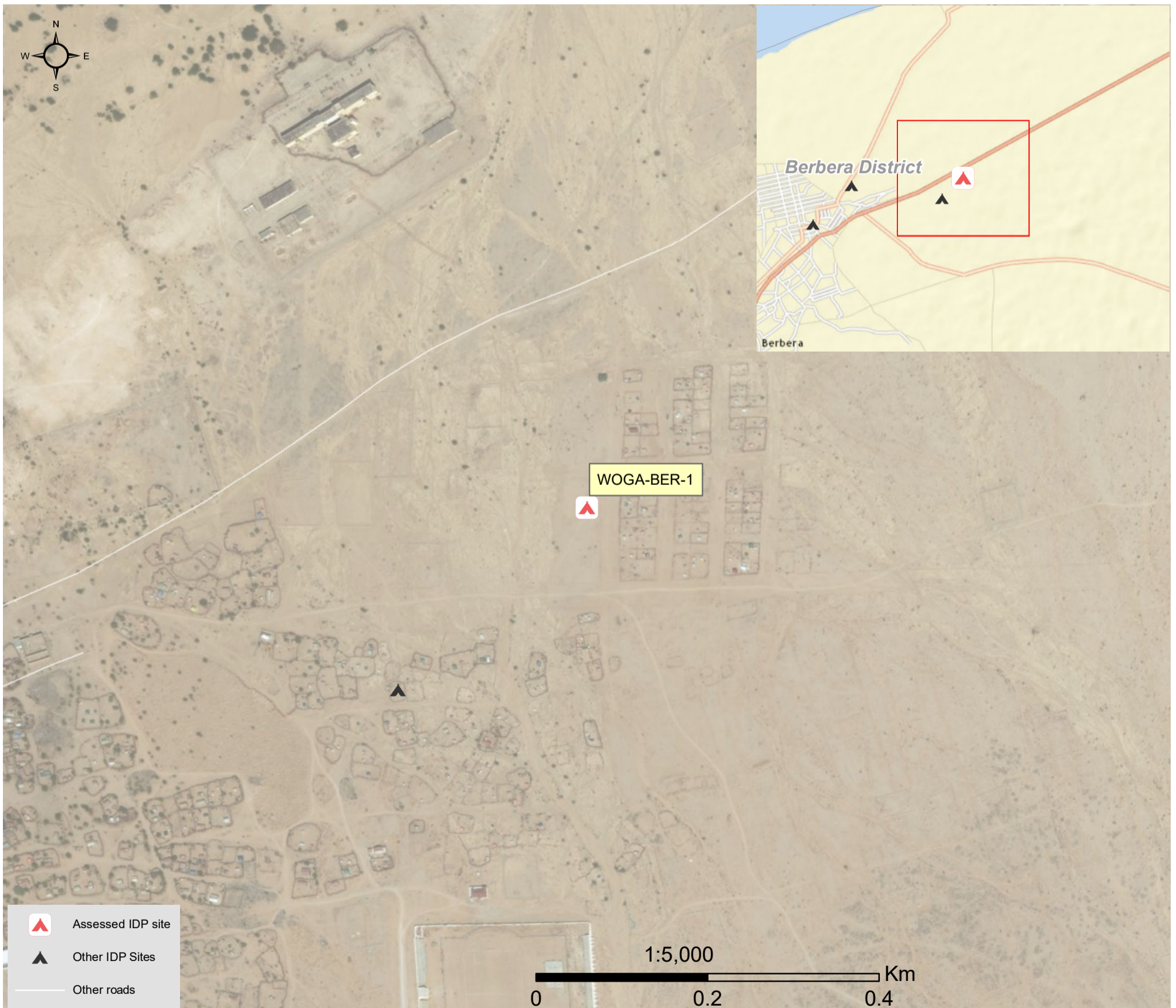
Date assessed: **Dec - 2017**

Location map



Assessed IDP sites in Berbera

Coordinates: Lat. 10.44696, Long. 45.02809



1. United Nations High Commissioner for Refugees (UNHCR): Protection & Return Monitoring Network (PRMN), September 2017

2. For each target location, the area was divided into 1km² grids. Enumerator teams then visited each grid to verify whether an IDP site was present. By visiting all grids, teams were able to determine the total number of sites in each location.

3. Where KI responses were significantly divergent, these were verified with the respective KIs with a higher reliability accorded to the response provided by the site manager or community leader.



 **Site Information**

Settlement type	Planned site
Estimated number of individuals	900
Estimated number of households	150
Site capacity reached	Yes
Responsible management agency	Local authority
Date when most site residents arrived	Sep-13
Site owner	None

Protection

Number of vulnerable households:	
Female-headed households	150
Child-headed households	0
Elderly individuals ⁴	0
Unaccompanied children	0
Individuals with a physical disability	0
Presence of shared community space	Yes
Presence of separate space for women/girls	Yes
Presence of child friendly space	No
Public lighting in the site	No
Type of landownership	N/A
Risk of eviction in next three months	no

WASH

Access to potable water	Yes
Number of latrines in the site:	
Latrines (mixed)	10
Latrines (male)	0
Latrines (female)	0
Access to handwashing facilities	No

Shelter and Non-Food Items (NFIs)

Most common shelter types in the site⁵:	
1. Buul	
2. CGI	
3. N/A	
Electricity available in the site	No
Access to a NFI market	No
Average walking time to the nearest NFI market	N/A
Perceived safe access to NFI market	N/A

Displacement

Estimated number of households per displacement group:	
IDPs	150
Host community/ non-displaced	0
IDP households arrived in the past 3 months	5
Most common areas of origin:	
First area of origin	Woqooyi Galbeed
Second area of origin	N/A
Third area of origin	N/A

Food Security

Primary source of food	Market purchase
Food distributions	None
Access to a food market	Yes

Health and Nutrition

Most common health issue(s) reported in the site:	
1. None	
2. N/A	
3. N/A	
Access to healthcare services	No
Average walking time to the nearest health service	N/A
Women give birth in the site	Yes
Access to nutrition services	No
Average walking time to the nearest nutrition service	N/A
Access to nutrition services:	No

Education

Education services available	No
Average walking time to the nearest school	N/A
Education facilities available to residents in the site⁵:	
1. N/A	
2. N/A	
3. N/A	

Communication

Three most trusted sources of information⁵:	
1. Friends, neighbours and family	
2. Community leader	
3. N/A	
Most commonly spoken language	Somali Standard

4. More than 60 years old.

5. Key informants could select multiple responses.

Introduction

While an estimated 2.1 million people live in displacement sites in Somalia¹, existing information on exact locations and site level vulnerabilities is sparse, and existing assessments have been ad-hoc and unharmonised, resulting in low comparability and verification.

The Detailed Site Assessment (DSA) was triggered in coordination with the Camp Coordination and Camp Management (CCCM) Cluster in order to provide the humanitarian community with up-to-date information on location of internally displaced persons (IDP) sites, the conditions and capacity of the sites and the humanitarian needs of the residents.

Target locations for assessment were selected based on needs identified by the CCCM Cluster

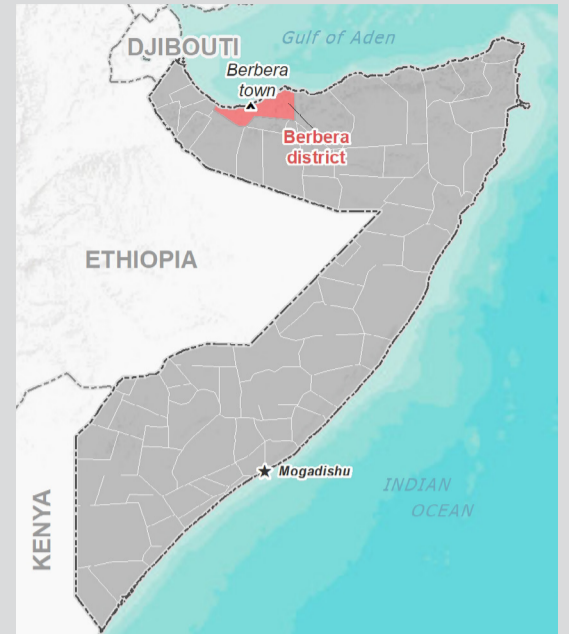
and accessibility for data collection.

A grid pattern approach² was applied during data collection to ensure that all IDP sites in the target area were identified. In each site, two key informant (KI) interviews were conducted: one with the site manager or community leader and one with a women's representative to ensure the perspectives of different groups were captured³. KI responses were aggregated to give one response per question per site.

This factsheet presents a summary of Dhuxusha idp Site profile along with the needs and priorities of IDPs residing in the site. As the data is captured through KIs, findings should be considered indicative only.

Date assessed: **Dec - 2017**

Location map



Assessed IDP sites in Berbera

Coordinates: Lat. 10.44267, Long. 45.0141



1. United Nations High Commissioner for Refugees (UNHCR): Protection & Return Monitoring Network (PRMN), September 2017
 2. For each target location, the area was divided into 1km² grids. Enumerator teams then visited each grid to verify whether an IDP site was present. By visiting all grids, teams were able to determine the total number of sites in each location.
 3. Where KI responses were significantly divergent, these were verified with the respective KIs with a higher reliability accorded to the response provided by the site manager or community leader.



Site Information

Settlement type	Planned site
Estimated number of individuals	400
Estimated number of households	20
Site capacity reached	No
Responsible management agency	No management
Date when most site residents arrived	May-16
Site owner	None

Protection

Number of vulnerable households:	
Female-headed households	5
Child-headed households	0
Elderly individuals ⁴	100
Unaccompanied children	5
Individuals with a physical disability	0
Presence of shared community space	No
Presence of separate space for women/girls	No
Presence of child friendly space	No
Public lighting in the site	No
Type of landownership	N/A
Risk of eviction in next three months	no

WASH

Access to potable water	Yes
Number of latrines in the site:	
Latrines (mixed)	0
Latrines (male)	1
Latrines (female)	0
Access to handwashing facilities	No

Shelter and Non-Food Items (NFIs)

Most common shelter types in the site⁵:	
1. Buul	
2. N/A	
3. N/A	
Electricity available in the site	No
Access to a NFI market	No
Average walking time to the nearest NFI market	N/A
Perceived safe access to NFI market	N/A

Displacement

Estimated number of households per displacement group:	
IDPs	20
Host community/ non-displaced	0
IDP households arrived in the past 3 months	0
Most common areas of origin:	
First area of origin	Woqooyi Galbeed
Second area of origin	Togdheer
Third area of origin	Sanaag

Food Security

Primary source of food	Market purchase
Food distributions	None
Access to a food market	No

Health and Nutrition

Most common health issue(s) reported in the site:	
1. None	
2. N/A	
3. N/A	
Access to healthcare services	Yes
Average walking time to the nearest health service	30 minutes
Women give birth in the site	Yes
Access to nutrition services	No
Average walking time to the nearest nutrition service	N/A
Access to nutrition services:	No

Education

Education services available	No
Average walking time to the nearest school	N/A
Education facilities available to residents in the site⁵:	
1. N/A	
2. N/A	
3. N/A	

Communication

Three most trusted sources of information⁵:	
1. Radio	
2. N/A	
3. N/A	
Most commonly spoken language	Somali Standard

4. More than 60 years old.

5. Key informants could select multiple responses.

Introduction

While an estimated 2.1 million people live in displacement sites in Somalia¹, existing information on exact locations and site level vulnerabilities is sparse, and existing assessments have been ad-hoc and unharmonised, resulting in low comparability and verification.

The Detailed Site Assessment (DSA) was triggered in coordination with the Camp Coordination and Camp Management (CCCM) Cluster in order to provide the humanitarian community with up-to-date information on location of internally displaced persons (IDP) sites, the conditions and capacity of the sites and the humanitarian needs of the residents.

Target locations for assessment were selected based on needs identified by the CCCM Cluster

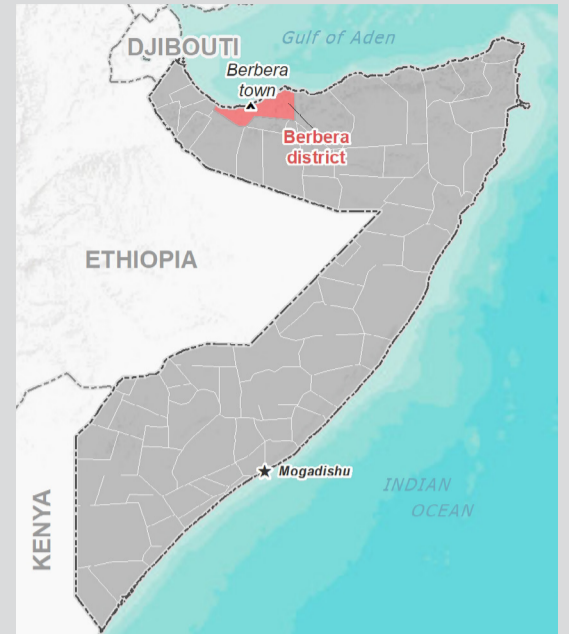
and accessibility for data collection.

A grid pattern approach² was applied during data collection to ensure that all IDP sites in the target area were identified. In each site, two key informant (KI) interviews were conducted: one with the site manager or community leader and one with a women's representative to ensure the perspectives of different groups were captured³. KI responses were aggregated to give one response per question per site.

This factsheet presents a summary of Shacabka Site profile along with the needs and priorities of IDPs residing in the site. As the data is captured through KIs, findings should be considered indicative only.

Date assessed: **Dec - 2017**

Location map



Assessed IDP sites in Berbera

Coordinates: Lat. 10.43185, Long. 45.00477



1. United Nations High Commissioner for Refugees (UNHCR): Protection & Return Monitoring Network (PRMN), September 2017
 2. For each target location, the area was divided into 1km² grids. Enumerator teams then visited each grid to verify whether an IDP site was present. By visiting all grids, teams were able to determine the total number of sites in each location.
 3. Where KI responses were significantly divergent, these were verified with the respective KIs with a higher reliability accorded to the response provided by the site manager or community leader.



Site Information

Settlement type	Spontaneous site
Estimated number of individuals	420
Estimated number of households	70
Site capacity reached	No
Responsible management agency	No management
Date when most site residents arrived	Aug-08
Site owner	Local authority

Protection

Number of vulnerable households:	
Female-headed households	3
Child-headed households	0
Elderly individuals ⁴	30
Unaccompanied children	30
Individuals with a physical disability	5
Presence of shared community space	No
Presence of separate space for women/girls	No
Presence of child friendly space	No
Public lighting in the site	Yes
Type of landownership	None
Risk of eviction in next three months	no

WASH

Access to potable water	No
Number of latrines in the site:	
Latrines (mixed)	2
Latrines (male)	0
Latrines (female)	0
Access to handwashing facilities	No

Shelter and Non-Food Items (NFIs)

Most common shelter types in the site⁵:	
1. Buul	
2. Tent	
3. CGI	
Electricity available in the site	No
Access to a NFI market	No
Average walking time to the nearest NFI market	N/A
Perceived safe access to NFI market	N/A

Displacement

Estimated number of households per displacement group:	
IDPs	70
Host community/ non-displaced	0
IDP households arrived in the past 3 months	10
Most common areas of origin:	
First area of origin	Woqooyi Galbeed
Second area of origin	Togdheer
Third area of origin	Sanaag

Food Security

Primary source of food	Market purchase
Food distributions	None
Access to a food market	No

Health and Nutrition

Most common health issue(s) reported in the site:	
1. Malaria	
2. Diphtheria	
3. N/A	
Access to healthcare services	No
Average walking time to the nearest health service	N/A
Women give birth in the site	No
Access to nutrition services	No
Average walking time to the nearest nutrition service	N/A
Access to nutrition services:	No

Education

Education services available	No
Average walking time to the nearest school	N/A
Education facilities available to residents in the site⁵:	
1. N/A	
2. N/A	
3. N/A	

Communication

Three most trusted sources of information⁵:	
1. Friends, neighbours and family	
2. Religious leader	
3. Community leader	
Most commonly spoken language	Somali Standard

4. More than 60 years old.

5. Key informants could select multiple responses.

Introduction

While an estimated 2.1 million people live in displacement sites in Somalia¹, existing information on exact locations and site level vulnerabilities is sparse, and existing assessments have been ad-hoc and unharmonised, resulting in low comparability and verification.

The Detailed Site Assessment (DSA) was triggered in coordination with the Camp Coordination and Camp Management (CCCM) Cluster in order to provide the humanitarian community with up-to-date information on location of internally displaced persons (IDP) sites, the conditions and capacity of the sites and the humanitarian needs of the residents.

Target locations for assessment were selected based on needs identified by the CCCM Cluster

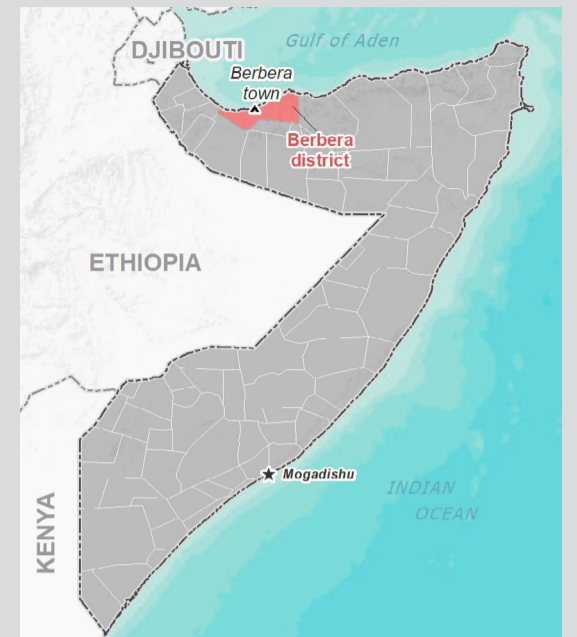
and accessibility for data collection.

A grid pattern approach² was applied during data collection to ensure that all IDP sites in the target area were identified. In each site, two key informant (KI) interviews were conducted: one with the site manager or community leader and one with a women's representative to ensure the perspectives of different groups were captured³. KI responses were aggregated to give one response per question per site.

This factsheet presents a summary of Magaalo cad Site profile along with the needs and priorities of IDPs residing in the site. As the data is captured through KIs, findings should be considered indicative only.

Date assessed: **Dec - 2017**

Location map



Assessed IDP sites in Berbera

Coordinates: Lat. 10.41957, Long. 45.00605



1. United Nations High Commissioner for Refugees (UNHCR): Protection & Return Monitoring Network (PRMN), September 2017
 2. For each target location, the area was divided into 1km² grids. Enumerator teams then visited each grid to verify whether an IDP site was present. By visiting all grids, teams were able to determine the total number of sites in each location.
 3. Where KI responses were significantly divergent, these were verified with the respective KIs with a higher reliability accorded to the response provided by the site manager or community leader.



Site Information

Settlement type	Planned site
Estimated number of individuals	400
Estimated number of households	80
Site capacity reached	Yes
Responsible management agency	Local authority
Date when most site residents arrived	Nov-16
Site owner	Local authority

Protection

Number of vulnerable households:	
Female-headed households	10
Child-headed households	5
Elderly individuals ⁴	0
Unaccompanied children	3
Individuals with a physical disability	10
Presence of shared community space	Yes
Presence of separate space for women/girls	Yes
Presence of child friendly space	No
Public lighting in the site	Yes
Type of landownership	Formal
Risk of eviction in next three months	no

WASH

Access to potable water	Yes
Number of latrines in the site:	
Latrines (mixed)	35
Latrines (male)	0
Latrines (female)	0
Access to handwashing facilities	No

Shelter and Non-Food Items (NFIs)

Most common shelter types in the site⁵:	
1. Wattle and daub	
2. Stone	
3. N/A	
Electricity available in the site	Yes
Access to a NFI market	Yes
Average walking time to the nearest NFI market	30 minutes
Perceived safe access to NFI market	Yes

Displacement

Estimated number of households per displacement group:	
IDPs	40
Host community/ non-displaced	40
IDP households arrived in the past 3 months	28
Most common areas of origin:	
First area of origin	Woqooyi Galbeed
Second area of origin	Togdheer
Third area of origin	Sanaag

Food Security

Primary source of food	Market purchase
Food distributions	Less than montly
Access to a food market	No

Health and Nutrition

Most common health issue(s) reported in the site:	
1. None	
2. N/A	
3. N/A	
Access to healthcare services	No
Average walking time to the nearest health service	N/A
Women give birth in the site	Yes
Access to nutrition services	No
Average walking time to the nearest nutrition service	N/A
Access to nutrition services:	No

Education

Education services available	Yes
Average walking time to the nearest school	0 minutes
Education facilities available to residents in the site⁵:	
1. Primary	
2. N/A	
3. N/A	

Communication

Three most trusted sources of information⁵:	
1. Friends, neighbours and family	
2. N/A	
3. N/A	
Most commonly spoken language	Somali Standard

4. More than 60 years old.

5. Key informants could select multiple responses.



Introduction

While an estimated 2.1 million people live in displacement sites in Somalia¹, existing information on exact locations and site level vulnerabilities is sparse, and existing assessments have been ad-hoc and unharmonised, resulting in low comparability and verification.

The Detailed Site Assessment (DSA) was triggered in coordination with the Camp Coordination and Camp Management (CCCM) Cluster in order to provide the humanitarian community with up-to-date information on location of internally displaced persons (IDP) sites, the conditions and capacity of the sites and the humanitarian needs of the residents.

Target locations for assessment were selected based on needs identified by the CCCM Cluster

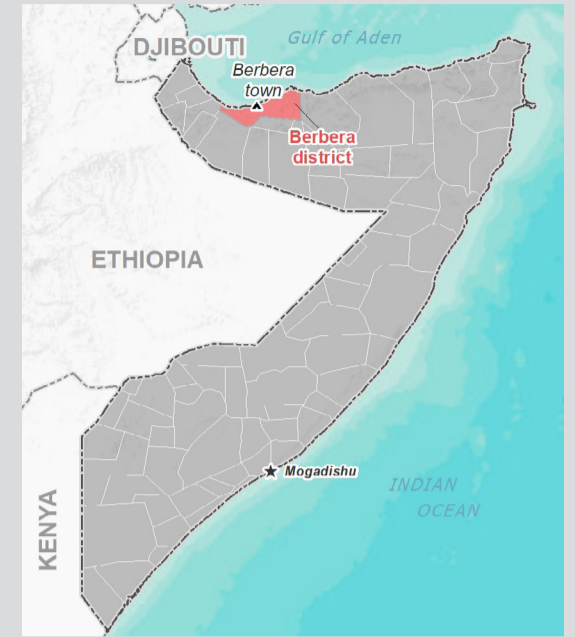
and accessibility for data collection.

A grid pattern approach² was applied during data collection to ensure that all IDP sites in the target area were identified. In each site, two key informant (KI) interviews were conducted: one with the site manager or community leader and one with a women's representative to ensure the perspectives of different groups were captured³. KI responses were aggregated to give one response per question per site.

This factsheet presents a summary of Dhuxusha Site profile along with the needs and priorities of IDPs residing in the site. As the data is captured through KIs, findings should be considered indicative only.

Date assessed: **Dec - 2018**

Location map



Assessed IDP sites in Berbera

Coordinates: Lat. 9.5697175, Long. 44.0355449



1. United Nations High Commissioner for Refugees (UNHCR): Protection & Return Monitoring Network (PRMN), September 2017

2. For each target location, the area was divided into 1km² grids. Enumerator teams then visited each grid to verify whether an IDP site was present. By visiting all grids, teams were able to determine the total number of sites in each location.

3. Where KI responses were significantly divergent, these were verified with the respective KIs with a higher reliability accorded to the response provided by the site manager or community leader.





Site Information

Settlement type	Planned Site
Estimated number of individuals	132
Estimated number of households	22
Site capacity reached	Yes
Responsible management agency	Local Authority
Date when most site residents arrived	Dec-17
Site owner	Not Known

Protection

Number of vulnerable households:	
Female-headed households	2
Child-headed households	0
Elderly individuals ⁴	12
Unaccompanied children	0
Individuals with a physical disability	0
Presence of shared community space	No
Presence of separate space for women/girls	No
Presence of child friendly space	No
Public lighting in the site	No
Type of landownership	N/A
Risk of eviction in next three months	Yes

WASH

Access to potable water	Yes
Number of latrines in the site:	
Latrines (mixed)	0
Latrines (male)	0
Latrines (female)	0
Access to handwashing facilities	N/A

Shelter and Non-Food Items (NFIs)

Most common shelter types in the site⁵:	
1. Buul	
2. N/A	
3. N/A	
Electricity available in the site	No
Access to a NFI market	Yes
Average walking time to the nearest NFI market	10 minutes
Perceived safe access to NFI market	Yes

Displacement

Estimated number of households per displacement group:	
IDPs	22
Host community/ non-displaced	0
IDP households arrived in the past 3 months	22
Most common areas of origin:	
First area of origin	Woqooyi Galbeed
Second area of origin	N/A
Third area of origin	N/A

Food Security

Primary source of food	Market
Food distributions	In-kind
Access to a food market	Yes

Health and Nutrition

Most common health issue(s) reported in the site:	
1. Malaria	
2. N/A	
3. N/A	
Access to healthcare services	No
Average walking time to the nearest health service	N/A
Women give birth in the site	No
Access to nutrition services	Yes
Average walking time to the nearest nutrition service	12 minutes
Access to nutrition services:	Yes

Education

Education services available	Yes
Average walking time to the nearest school	2 minutes
Education facilities available to residents in the site⁵:	
1. Primary	
2. N/A	
3. N/A	

Communication

Three most trusted sources of information⁵:	
1. Friends/ family	
2. Religious leader	
3. Military official	
Most commonly spoken language	Somali Standard

4. More than 60 years old.

5. Key informants could select multiple responses.