

# DAMAGE ASSESSMENT OF IDLIB, IDLIB GOVERNORATE, SYRIA

Analysis with Pleiades Data Acquired 06 April 2015 and 02 May 2014, 15 September 2013 WorldView-2 Data, and 22 March 2010 GeoEye-1 Data

This map illustrates satellite-detected damage in the city of Idlib, Syrian Arab Republic. Using satellite imagery acquired 06 April 2015, 02 May 2014, 15 September 2013, and 22 March 2010, UNITAR - UNOSAT identified a total of 544 affected structures within the city. Approximately 176 of these were destroyed, 179 severely damaged, and 189 moderately damaged. While much of the city was damaged by 02 May 2014, 248 structures were newly damaged and 5

structures experienced an increase in damage between that date and 06 April 2015. This analysis was done of the REACH initiative for the U.S. Office of Foreign Disaster Assistance. This is a preliminary analysis and has not yet been validated in the field. Please send ground feedback to UNITAR - UNOSAT.

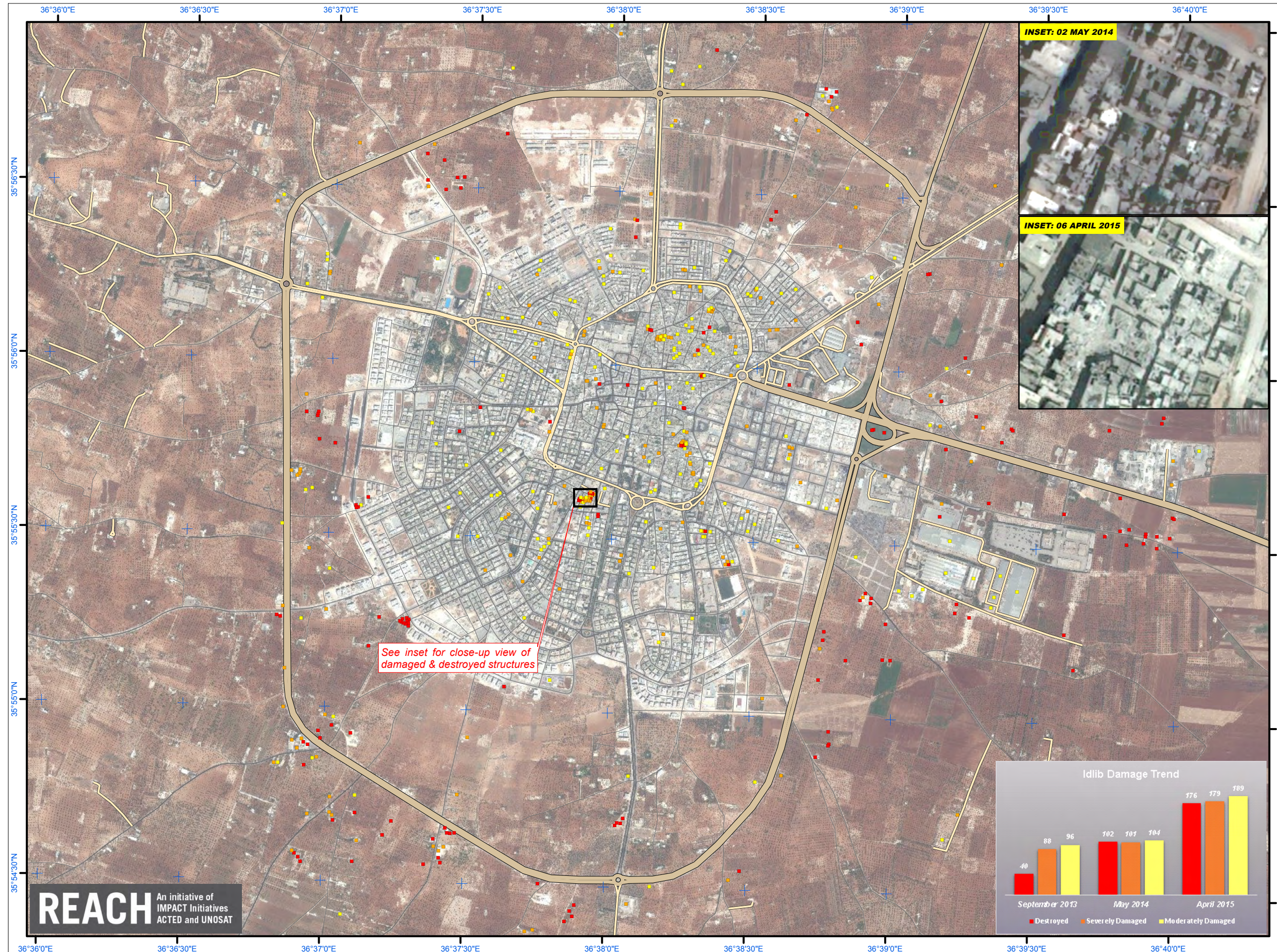
**Complex Emergency**



Production Date: 7/9/2015

Version 1.0

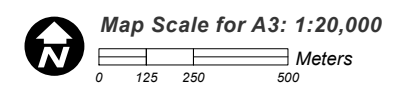
Activation Number: CE20130604SYR



See inset for close-up view of damaged & destroyed structures



- LEGEND**
- Destroyed
  - Severely Damaged
  - Moderately Damaged
  - Highway / Primary Road
  - Secondary Road
  - Local / Urban Road



Satellite Data (1): Pleiades  
 Imagery Dates: 06 April 2015 & 02 May 2014  
 Resolution: 50 cm  
 Copyright: © CNES (2015), Distribution AIRBUS DS  
 Source: Airbus Defense and Space  
 Satellite Data (2): WorldView-2  
 Imagery Date: 15 September 2013  
 Resolution: 50 cm  
 Copyright: DigitalGlobe  
 Source: European Space Imaging  
 Satellite Data (3): GeoEye-1  
 Imagery Date: 22 March 2010  
 Resolution: 50 cm  
 Copyright: DigitalGlobe  
 Source: European Space Imaging  
 Road Data: Google Map Maker / OSM / ESRI  
 Other Data: USGS, UNCS, NASA, NGA  
 Analysis: UNITAR / UNOSAT  
 Production: UNITAR / UNOSAT  
 Analysis conducted with ArcGIS v10.3

Coordinate System: WGS 1984 UTM Zone 37N  
 Projection: Transverse Mercator  
 Datum: WGS 1984  
 Units: Meter

The depiction and use of boundaries, geographic names and related data shown here are not warranted to be error-free nor do they imply official endorsement or acceptance by the United Nations. UNOSAT is a program of the United Nations Institute for Training and Research (UNITAR), providing satellite imagery and related geographic information, research and analysis to UN humanitarian and development agencies and their implementing partners.

This work by UNITAR/UNOSAT is licensed under a Creative Commons Attribution-NonCommercial-ShareAlike 3.0 Unported License.



**UNOSAT**

Contact Information: [unosat@unitar.org](mailto:unosat@unitar.org)  
 24/7 Hotline: +41 76 487 4998  
[www.unitar.org/unosat](http://www.unitar.org/unosat)

**REACH** An initiative of IMPACT Initiatives ACTED and UNOSAT

