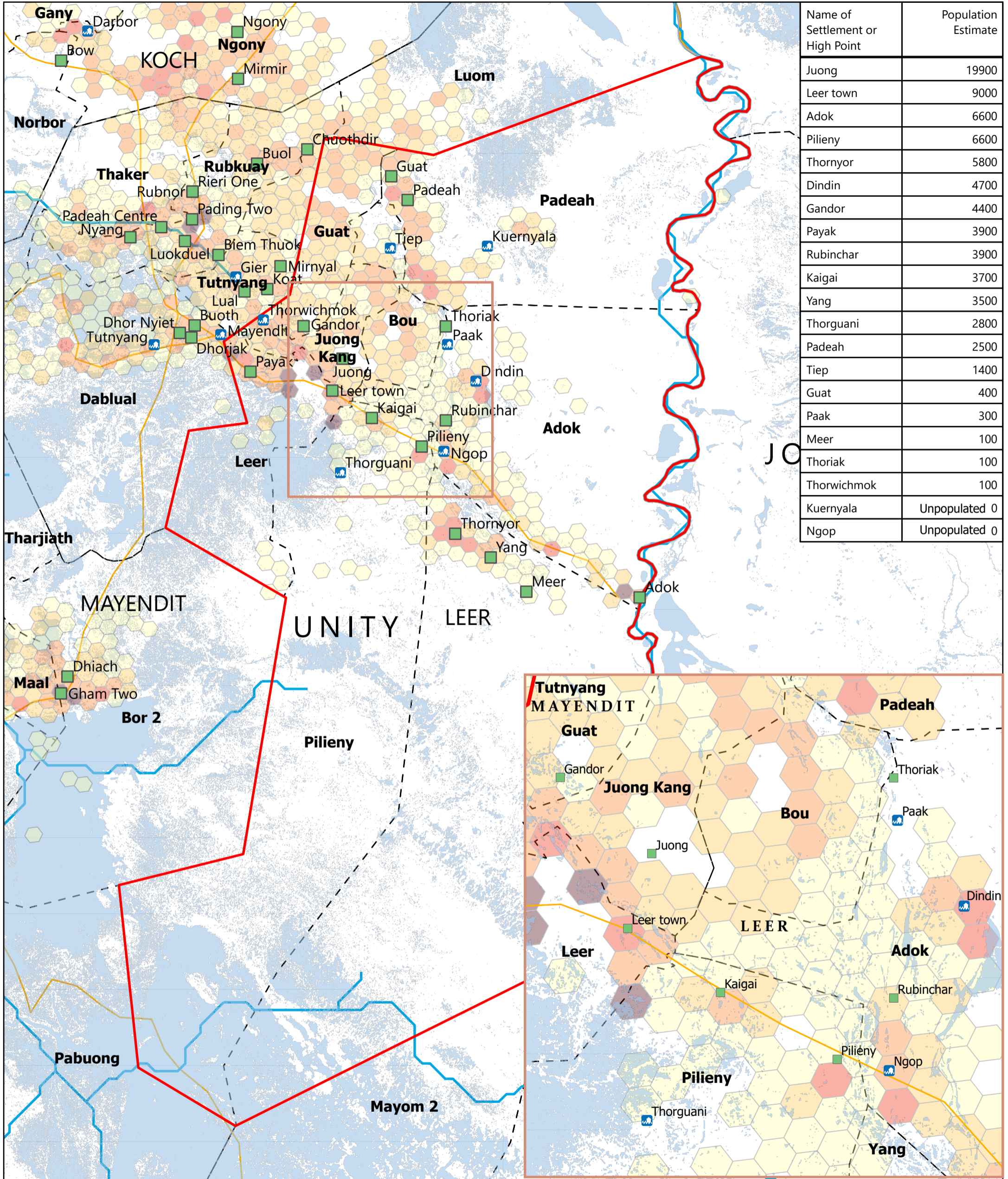


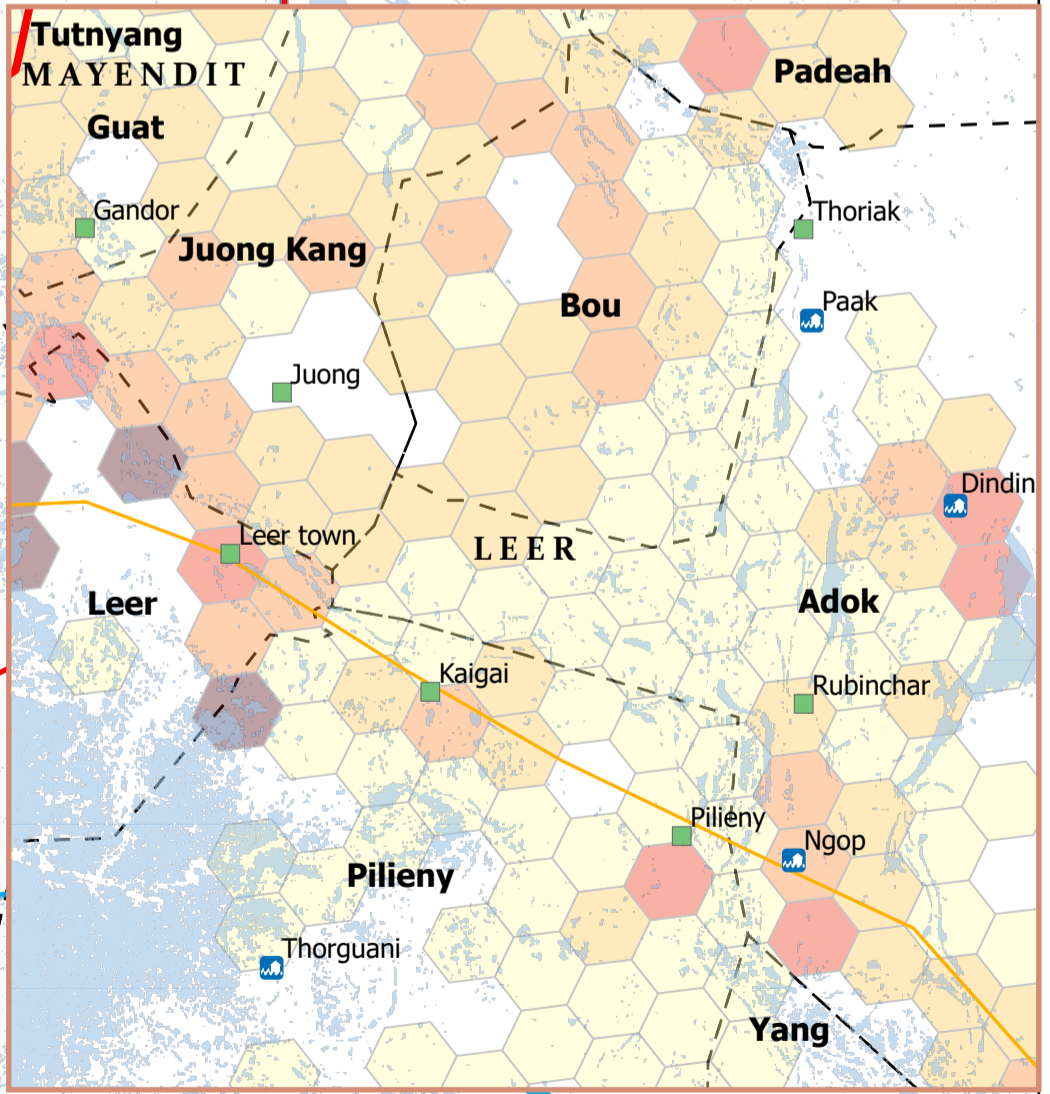
# SOUTH SUDAN - Leer County

## Flood overview (September 2025)

For Humanitarian Purposes Only  
Production Date: 29 September 2025



Name of Settlement or High Point	Population Estimate
Juong	19900
Leer town	9000
Adok	6600
Pilieny	6600
Thorneyor	5800
Dindin	4700
Gandor	4400
Payak	3900
Rubinchar	3900
Kaigai	3700
Yang	3500
Thorguani	2800
Padeah	2500
Tiep	1400
Guat	400
Paak	300
Meer	100
Thoriak	100
Thorwichmok	100
Kuernyala	Unpopulated 0
Ngop	Unpopulated 0



**Population (Kontur, 2023)**

- 1 - 100
- 101 - 250
- 251 - 500
- 501 - 750
- > 750

Satellite-detected flood extent (FEWSNET, as of 30th August 2025)

- Flooded settlements
- Flooded Small Towns
- High Ground (OCHA 2024 & UNMISS 2025)
- Roads
- River
- Payam
- Focus County
- County
- State

Data sources: Source: REACH, OCHA, UNMISS, IOM\_DTM, UNOSAT, FEWSNET  
Coordinate System: Name: GCS WGS 1984  
File: REACH\_SSD\_Map\_Unity\_Leer\_Flood\_29\_Sept\_2025  
Contact: reach.mapping@impact-initiatives.org

Note: Data, designations and boundaries contained on this map are not warranted to be error-free and do not imply acceptance by REACH partners, associates or donors mentioned on this map.