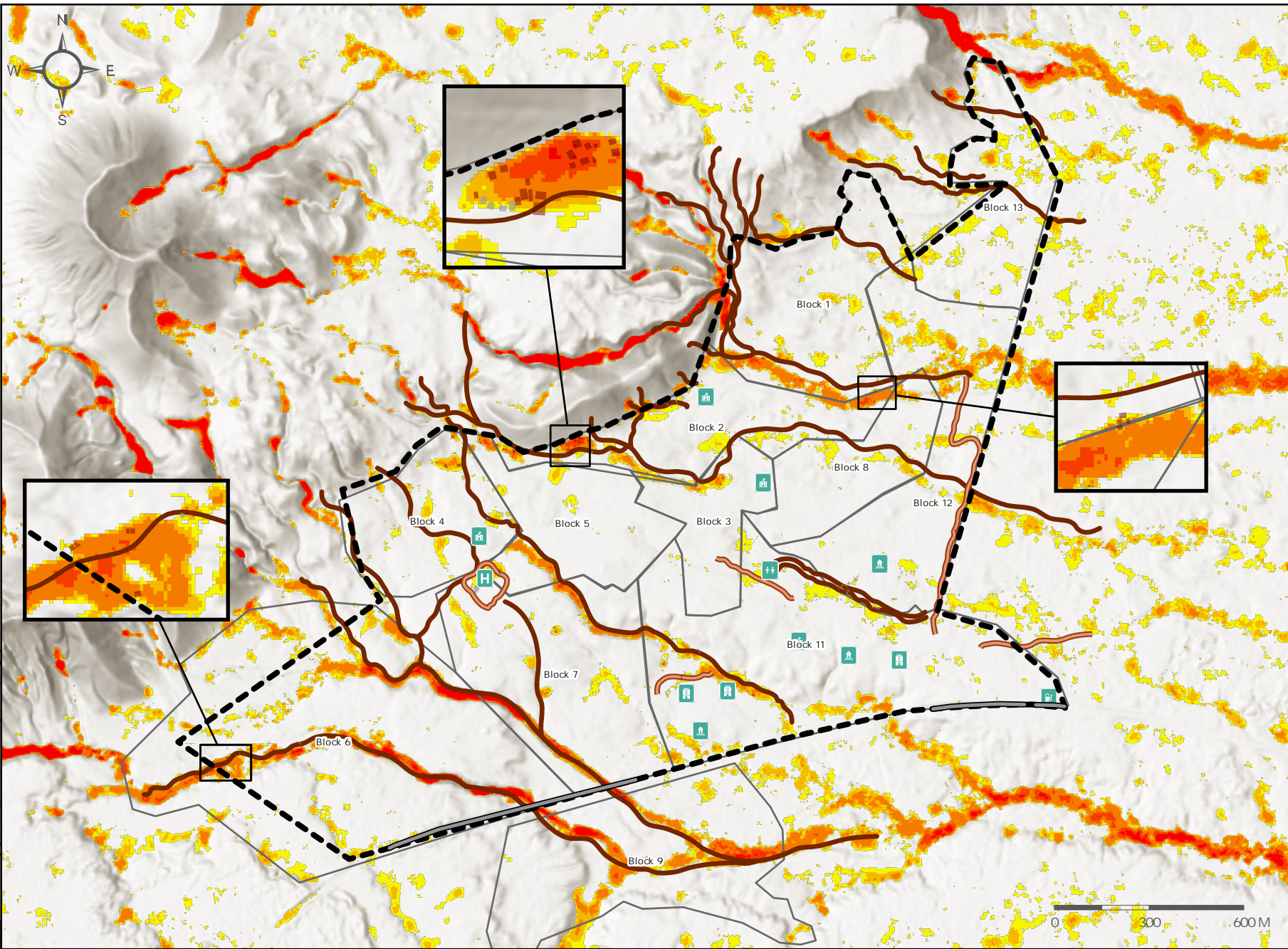
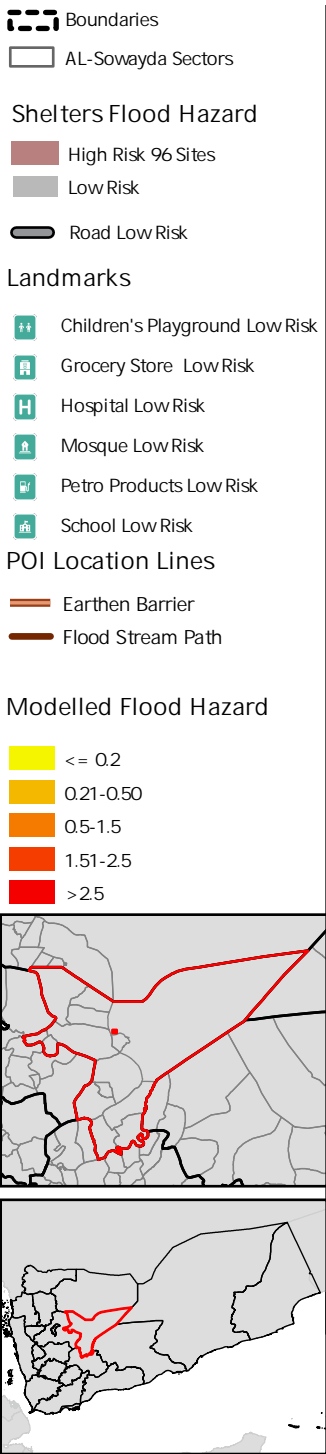


Yemen - Marib - Al-Sowayda

Flood Hazard 2024

96 Buildings at High Risk
0 Public Buildings at High Risk

Production Date : 30 May 2024



A two-dimensional (2D) unsteady flow hydraulic model was set up using HEC-RAS software for the two catchments in the Al-Sowayda region. The approach allows an understanding of flood hazards on a catchment-wide scale and identify areas prone to flood risk, especially areas exposed to flash flooding. The terrain used for the HEC-RAS 2D unsteady flow analysis of the Al-Sowayda catchment was a satellite derived DEM product of 2.5 meters resolution. Flood hazard was obtained by multiplying depth and velocity. The flood water depth represents water flow extents and static accumulation of water in meters. It was classified into 5 flood hazard categories from very low to extreme according to the Japanese criteria of the Ministry of Land Infrastructure, where each hazard category is associated with the risk of damage, the threat to human safety, and the possibility of evacuation. Following a collaborative approach, REACH and COCM Partner drew site boundaries of Al-Sowayda IDP site.

Roads: OpenStreetMap
Shelters and Agricultural land: Manually digitized by REACH Yemen
ESRI Coordinate System: WGS 1984 UTM Zone 38N
File: REACH_YEM_Map_FloodHazard_AISowayda_30May2024_A4

In partnership with

الوصول الإنساني
HUMAN ACCESS

REACH
An initiative of
IMPACT Initiatives
ACTED and UNOSAT