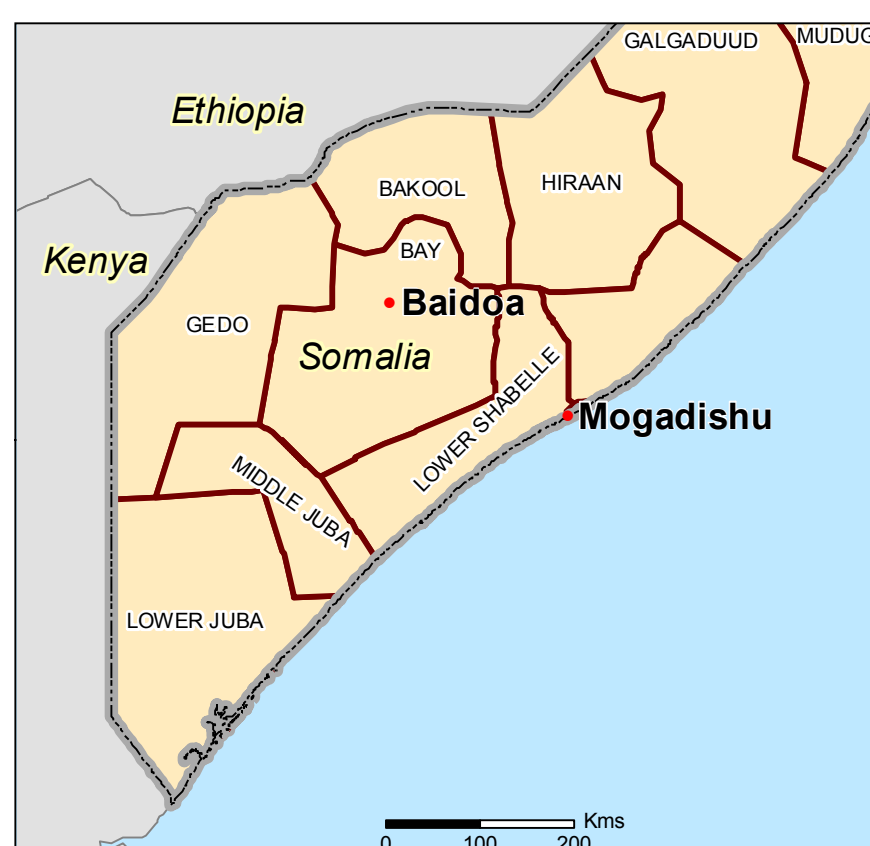
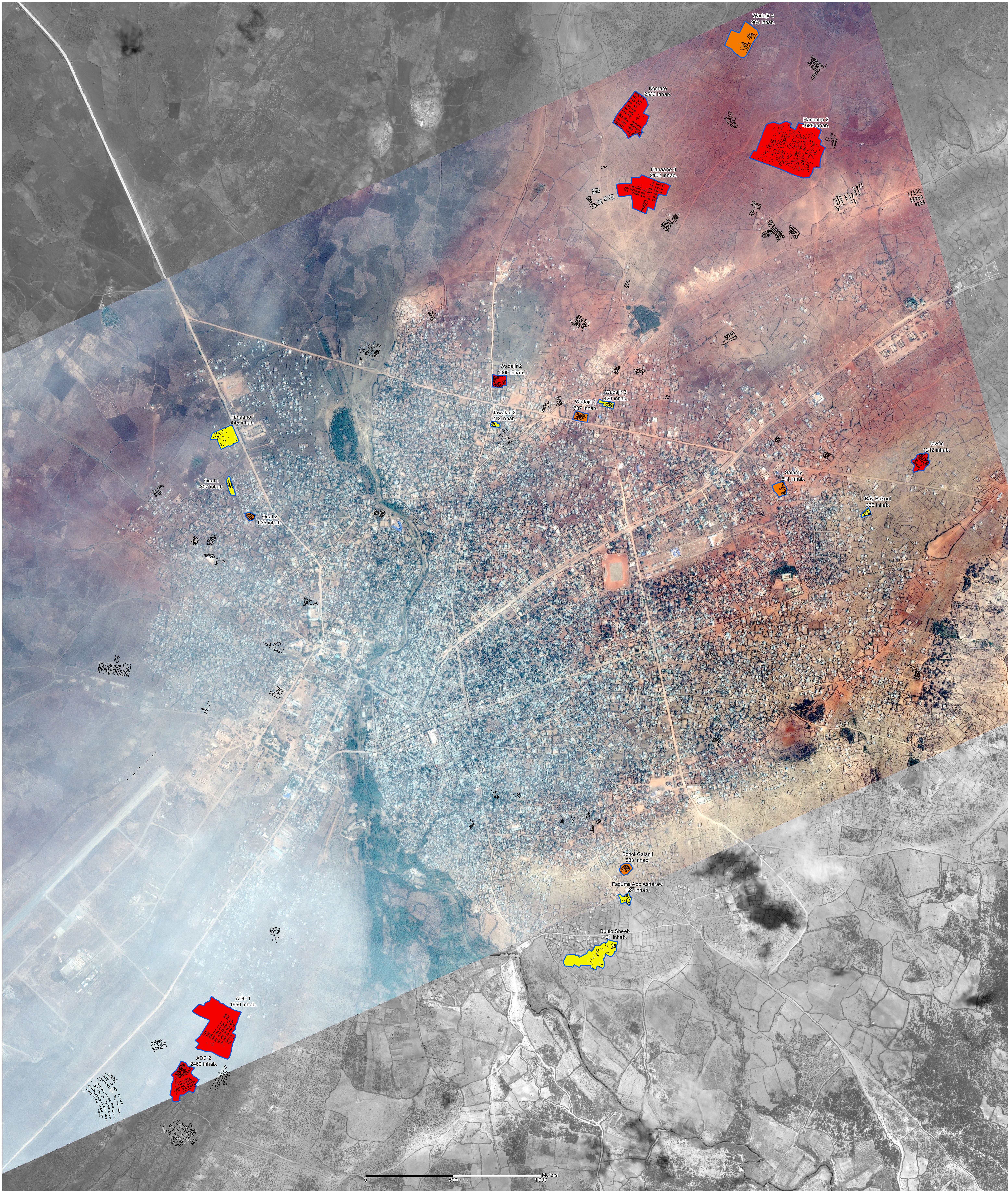


Somalia - Baidoa - IDP Settlement

Estimated Population per Settlement (December 2013)

For humanitarian relief purpose only
Production date : 21 March 2014



Estimate Population per Settlement

- 120 - 500
- 501 - 1'000
- 1'001 - 4'630

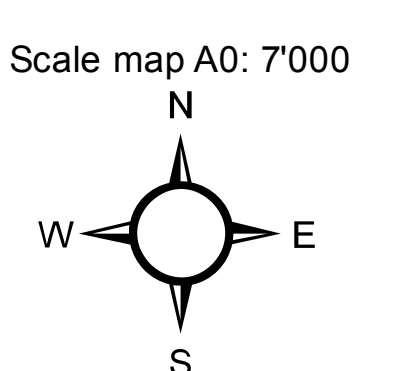
- Shelter (UNOSAT analysis)
- Assessed IDP Settlement
- Main City
- International Boundary
- Region

The population per site has been estimated by multiplying the average number of persons per shelter assessed with the number of shelters counted by the UNOSAT satellite imagery analysis. The average number of people per shelter has been calculated using the data collected during REACH Assessment in Baidoa in December 2013 (Average: 7.3 persons per shelter)

Data sources:
Facilities and IDP sections: REACH assessment
Shelters: Shelter UNOSAT analysis (21.08.2013 - 08.02.2014)
Admin level: OCHA COD
Imagery (1): 08 February 2014 (Pleiades/50 cm)
Copyright : CNES 2013 - Distribution Astrum Services /Spot Image
Imagery (2): 21 August 2013 (WorldView-1/50cm)
Copyright : US Dept of State, Humanitarian Information Unit, NextView License
Coordinate System: GCS WGS 1984
File: SOM_Baidoa_PopulationSettlement_21mars2014_A0
Contact : reach.mapping@impact-initiatives.org

The assessment does not cover all IDP settlements in Baidoa town. Areas of assessment represent only those identified by the clusters as priorities. The remaining shelters have not been assessed but may be interesting for future intervention by actors.

Note: Data, designations and boundaries contained on this map are not warranted to error-free and do not imply acceptance by the REACH partners and associated donors mentioned on this map. For Humanitarian purposes only.



Funded by



Humanitarian Aid and Civil Protection



FROM THE AMERICAN PEOPLE

REACH An initiative of IMPACT Initiatives ACTED and UNOSAT