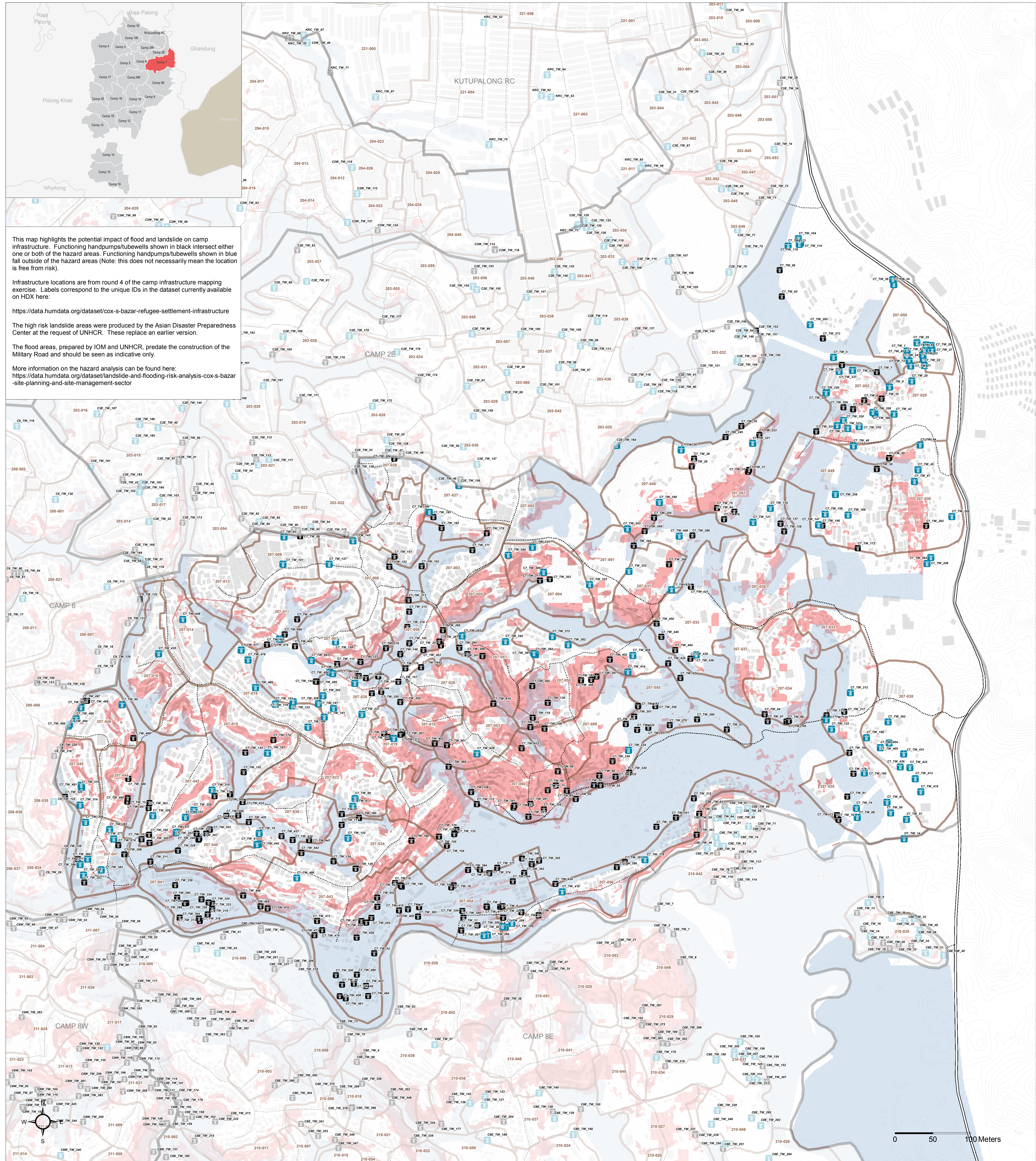


BANGLADESH - Rohingya Refugee Crisis - Cox's Bazar District

Camp 7 - Potential Risk to Handpumps and Tubewells

For Humanitarian Purposes Only
Production date: 19 March 2018



Data Sources:
Camp Infrastructure - REACH
Landslide Risk - ADPC / UNHCR
Flood Areas - ADPC / UNHCR / IOM
Elevation Contours - IOM
Shelter Footprints - REACH / UNOSAT
Roads / Footpaths - ISCG / REACH
Camp / Majhee / Admin Boundaries - ISCG / IOM / OCHA

Coordinate System: WGS 1984 UTM Zone 46N
Projection: Transverse Mercator
Contact: reach.mapping@impact-initiatives.org

Note: Data, designations and boundaries contained on this map are not warranted to be error-free and do not imply acceptance by the REACH partners, associates, donors mentioned on this map.

In support of the

WASH Sector
Cox's Bazar

Funded by

unicef

In partnership with

UNOSAT
United Nations Satellite Centre