

SYRIA - Sere Kaniye Informal IDP Camp

General Infrastructure – As of January 2021

For Humanitarian Purposes Only
Production date : 17 March, 2021



Latrines (private): 2,634
39 need maintenance (1%)
132 need rehabilitation (5%)
2495 have locks (95%)
0 female-only (0%)

Showers: 2634
35 need maintenance (1%)
126 need rehabilitation (5%)
2495 with locks (95%)
0 female-only (0%)

Kitchen: 504
Kitchen (under construction): 23

Sewage system: Underground sewage network
Water source: Water trucking

Area of Camp: 636,451 m²

Current number of shelters: 2660

Current number of residents: 8,515 individuals

Average camp area per person: 75 m² / person

Shelter area: 18.4 m²

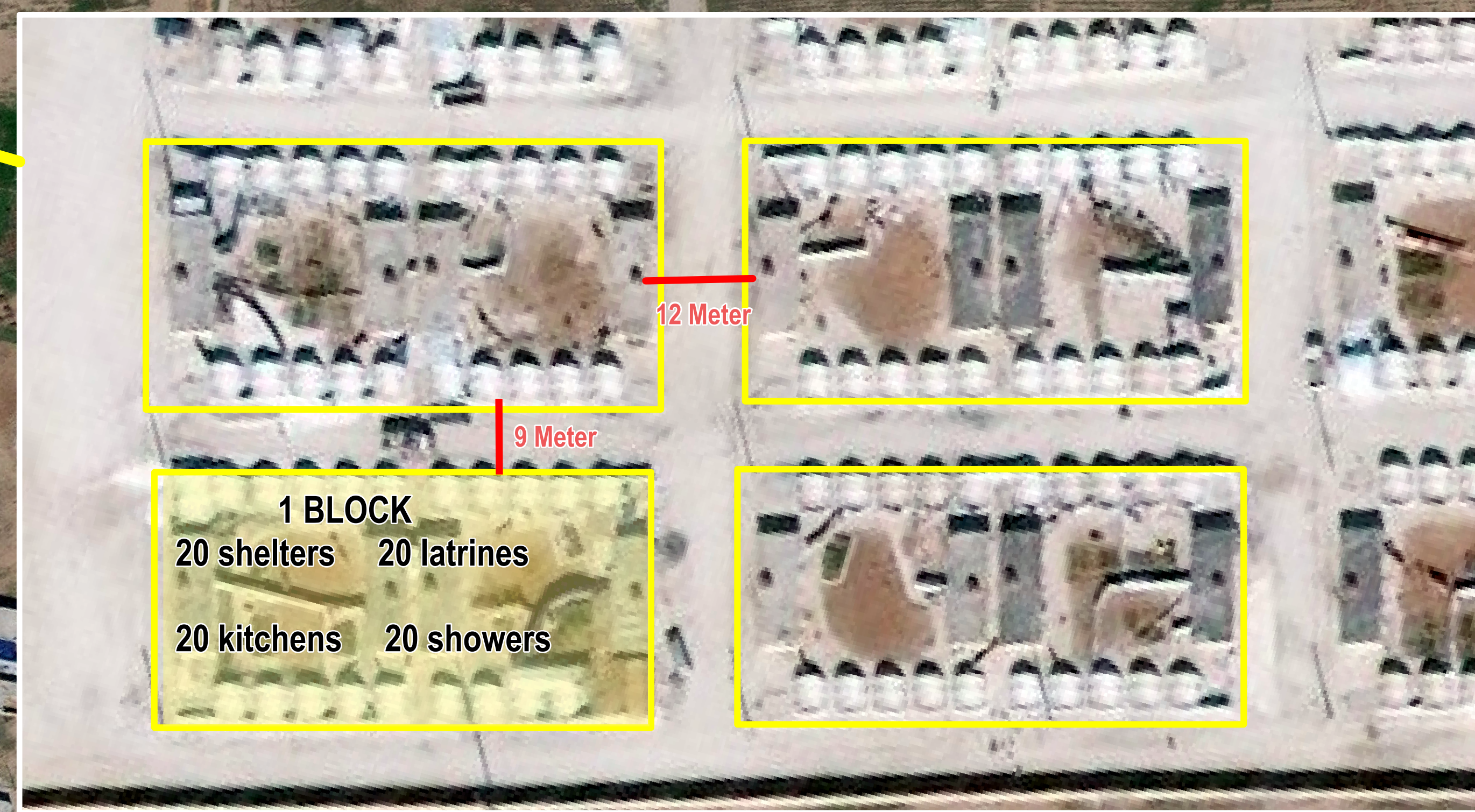
Distance between phases: 30 m

Distance between blocks: 9 m

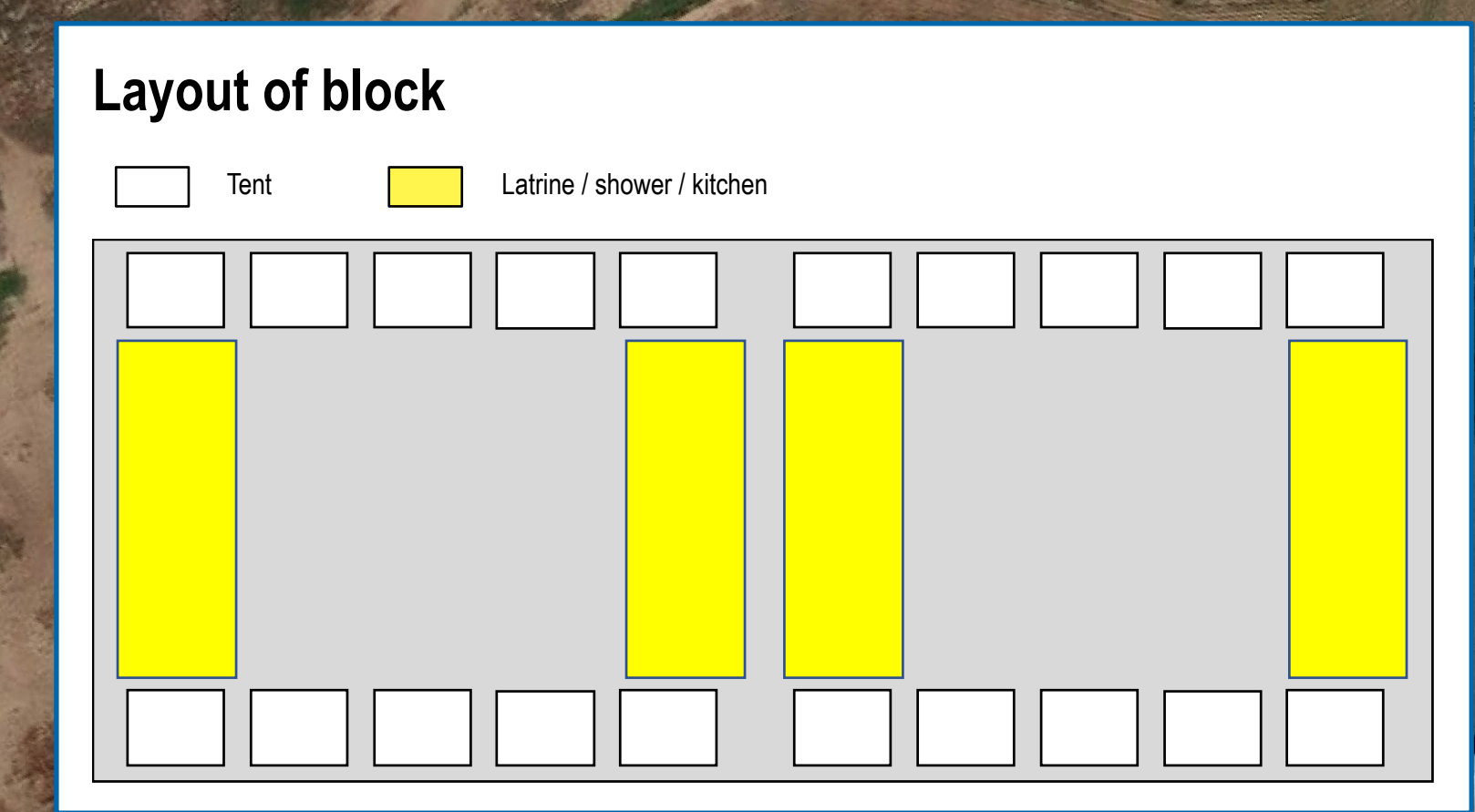
Distance between sectors: 12 m

Distance between shelters in same block: 0.8 m

All roads in the camp are gravel



IMPORTANT:
Camp infrastructure data collected 24 January 2021; satellite imagery obtained 21 February 2021



- | | | |
|--|---|---|
| General infrastructure | Sanitation infrastructure | Kitchen infrastructure |
| <ul style="list-style-type: none"> Block Sector Boundary ▼ Entrance Camp management Camp management Distribution Distribution Health Health Market Market School School Services Services Storage Storage UN/NGO Office UN/NGO Office | <ul style="list-style-type: none"> Distance between sectors Distance between blocks Latrine Latrine Shower Shower | <ul style="list-style-type: none"> Kitchen Kitchen Kitchen (under construction) Kitchen (under construction) |

Data Sources:
Infrastructure: REACH
Satellite Imagery: GeoEye-1 from 21 February 2021
Copyright: © 2021 DigitalGlobe
Source: US Department of State, Humanitarian Information Unit, NextView licens
File name: REACH_SYR_Map_Sere_Kaniye_Camp_Jan21_A0

Contact: mena.reach@impact-initiatives.org
Projection : WGS 1984 UTM 37N