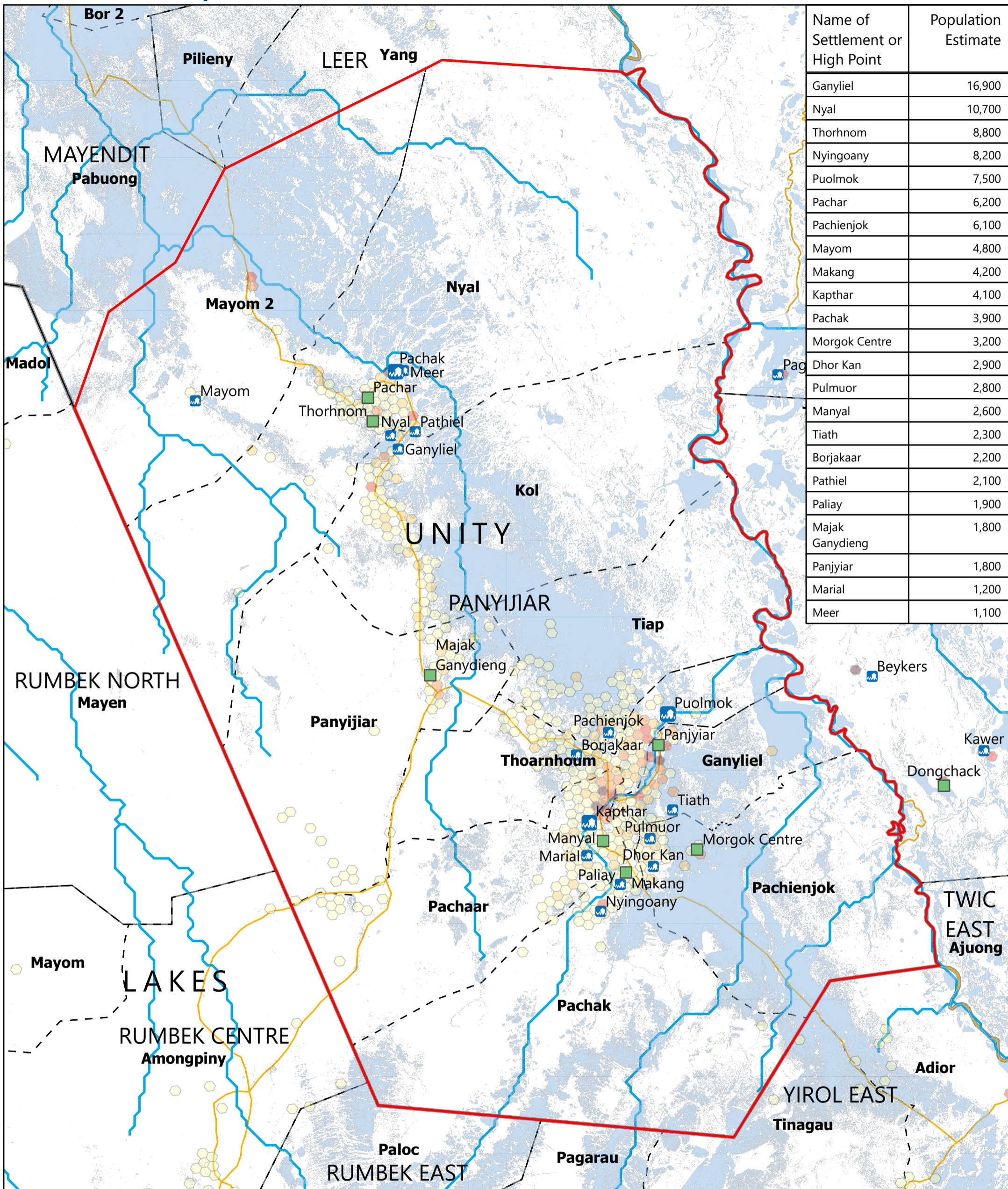


SOUTH SUDAN - Panyijiar County

Flood overview (September 2025)

For Humanitarian Purposes Only
Production Date: 29 September 2025



Name of Settlement or High Point	Population Estimate
Ganyliel	16,900
Nyal	10,700
Thorhnom	8,800
Nyingoany	8,200
Puolmok	7,500
Pachar	6,200
Pachienjok	6,100
Mayom	4,800
Makang	4,200
Kapthar	4,100
Pachak	3,900
Morgok Centre	3,200
Dhor Kan	2,900
Pulmuor	2,800
Manyal	2,600
Tiath	2,300
Borjakaar	2,200
Pathiel	2,100
Paliay	1,900
Majak Ganydieng	1,800
Panjyiar	1,800
Marial	1,200
Meer	1,100



Population (Kontur, 2023)

- 1 - 100
- 101 - 250
- 251 - 500
- 501 - 750
- > 750

Legend:

- Flooded settlements
- Flooded Small Towns
- High Ground (OCHA 2024 & UNMISS 2025)
- Roads
- River
- Payam
- Focus County
- County
- State

Scale: 0, 10, 20 Km

Data sources: Source: REACH, OCHA, UNMISS, IOM_DTM, UNOSAT, FEWSNET
Coordinate System: Name: GCS WGS 1984
File: REACH_SSD_Map_Unity_Panyijiar_Flood_29_Sept_2025
Contact: reach.mapping@impact-initiatives.org

Note: Data, designations and boundaries contained on this map are not warranted to be error-free and do not imply acceptance by REACH partners, associates or donors mentioned on this map.