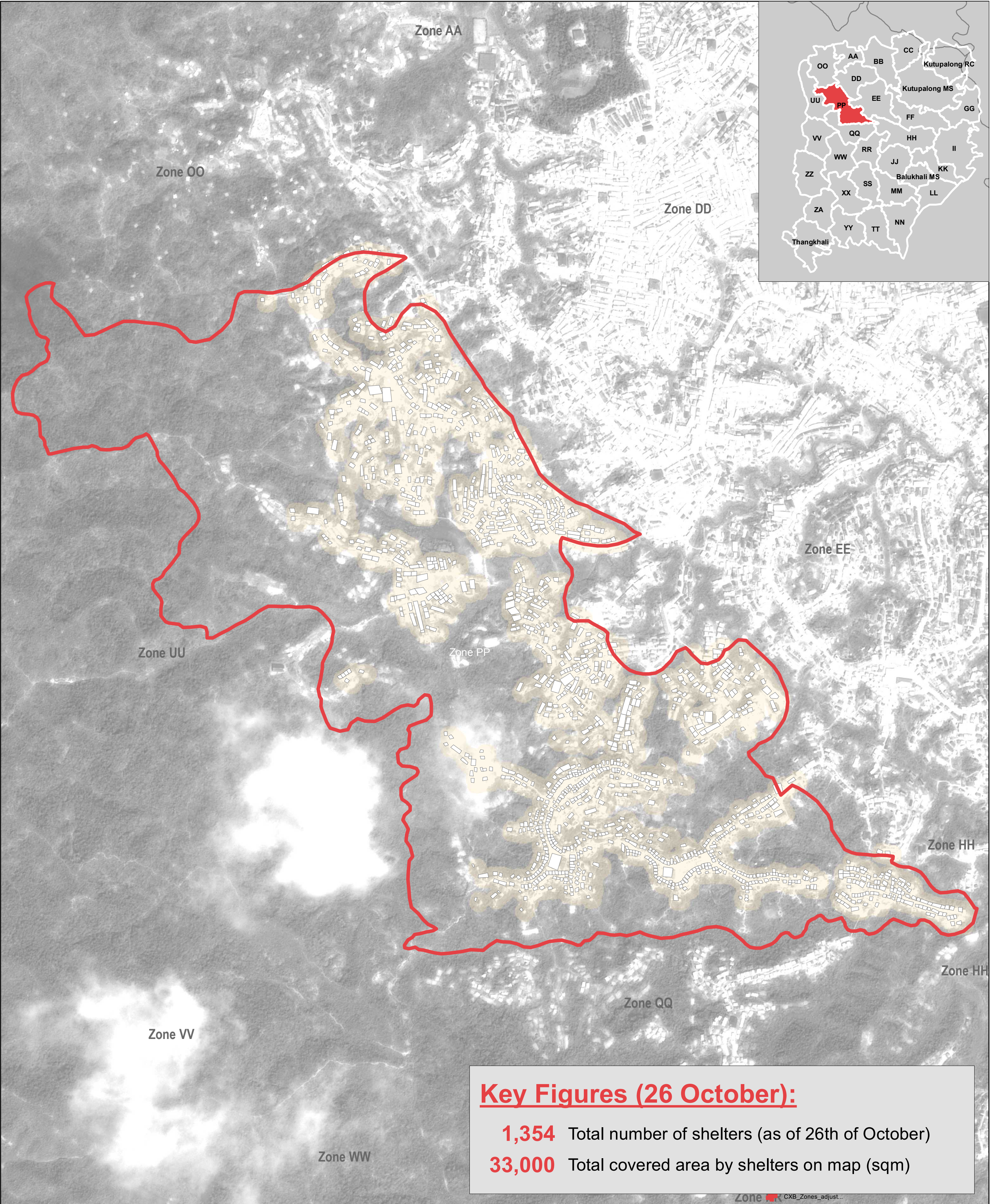


Key Figures (11 October):

750 Total number of shelters (as of 11th of October)
16,000 Total covered area by shelters on map (sqm)



Key Figures (26 October):

1,354 Total number of shelters (as of 26th of October)
33,000 Total covered area by shelters on map (sqm)

Note: Background image and shelter count on the left are from 11th of October and background image and shelter count on the right are from 26th of October.
Disclaimer: Data, designations and boundaries contained on this map are not warranted to be error-free and do not imply acceptance by the REACH partners, associates or donors mentioned on this map.

Data Sources:
Site Boundaries - ISCG
Shelter Analysis (September and October 2017) - REACH / UNOSAT
Satellite Imagery: WorldView -1 from 11 October 2017, DigitalGlobe, Source US Department of State, Humanitarian Information Unit, NextView License; Pleiades SPOT 6/7 from 26 October 2017 ©CNES 2017 Distribution Airbus DS

Coordinate System: WGS 1984 UTM Zone 46N
Projection: Transverse Mercator
File: reach_bgd_map_Zone_PP_shelter_count_SeptOct2017_a1
Contact: reach.mapping@impact-initiatives.org

