



# South Sudan - Shelter and Non-Food Items (NFI)s

South Sudan Displacement Crisis

Assessment of Hard-to-Reach Areas in South Sudan

October 2022

## Overview

The continuation of conflict since December 2013 has created a complex humanitarian crisis in the country; restricting humanitarian access and hindering the flow of information required by aid partners to deliver humanitarian assistance to populations in need. To address information gaps faced by the humanitarian response in South Sudan, REACH employs its Area of Knowledge (AoK) methodology to collect relevant information in hard-to-reach areas to inform humanitarian planning and interventions outside formal settlement sites.

Using the AoK methodology, REACH remotely monitors needs and access to services in the

Greater Upper Nile, Greater Equatoria and Greater Bahr el Ghazal regions. AoK data is collected monthly, through multi-sector interviews with the following typology of key informants (KIs):

- KIs who are newly arrived internally displaced persons (IDPs) who have left a hard-to-reach settlement in the last month
- KIs who have been in contact with someone living in a hard-to-reach settlement, or have visited one in the last month (traders, migrants, family members, etc.)
- KIs who remain in hard-to-reach settlements, contacted through phone

Selected KIs are purposively sampled and have knowledge from within the last month about a specific settlement in South Sudan, with data collected at the settlement level. About half of settlements assessed have more than one KI reporting on the settlement. In these cases, data is aggregated<sup>2</sup>, at the settlement level according to a weighting mechanism, which can be found in the [Terms of Reference \(ToRs\)](#).

All percentages presented in this factsheet, unless otherwise specified, represent the proportion of settlements assessed with that specific response.

The findings presented in this factsheet are indicative of the broad shelter and non-food item trends in

assessed settlements in October 2022 and are not statistically generalisable.

## Assessment Coverage

**2191** Key informants interviewed

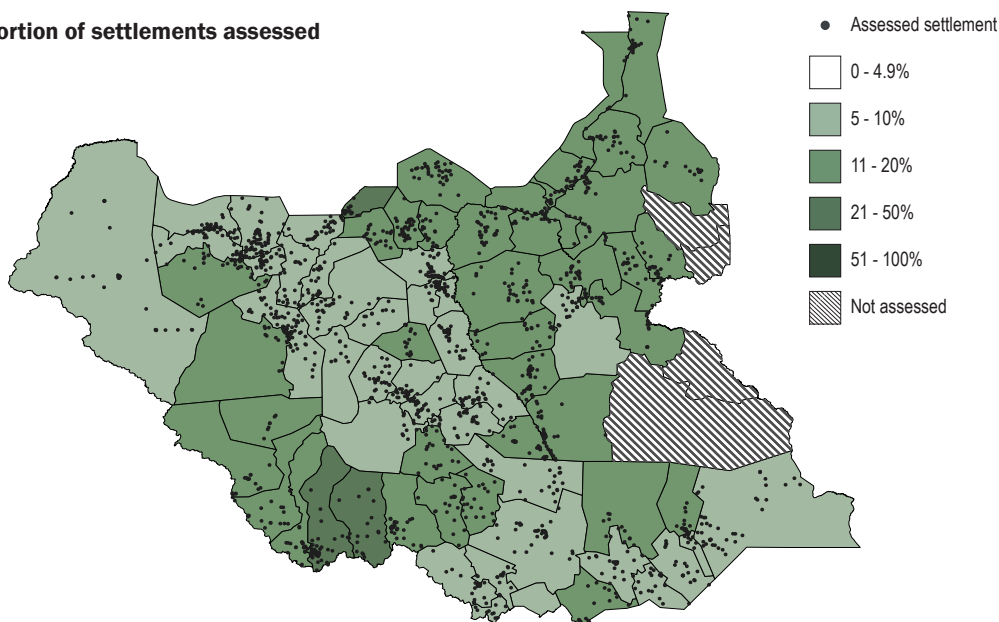
**1874** Settlements assessed

**74** Counties assessed

**74** Counties with 5% or more coverage<sup>1</sup>

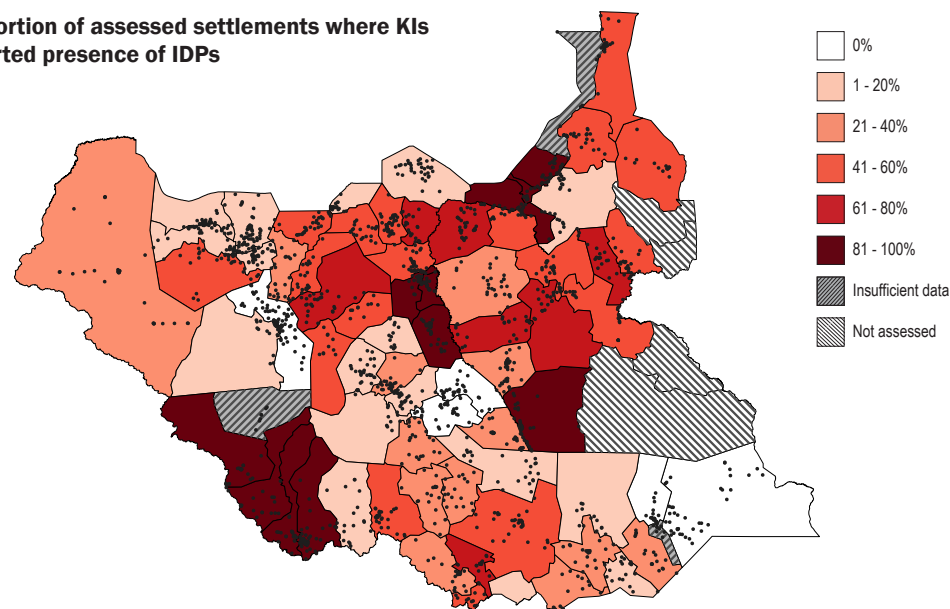
## Assessment coverage

Proportion of settlements assessed



## IDP Presence

Proportion of assessed settlements where KIs reported presence of IDPs



<sup>1</sup> Data is only represented for counties in which at least 5% of settlements have been assessed. The most recent OCHA Common Operational Dataset (COD) released in March 2019 has been used as the reference for settlement names and locations.

<sup>2</sup> Unless otherwise specified all questions have a recall period of 30 days prior to data collection.



# South Sudan - Shelter and Non-Food Items (NFIs)

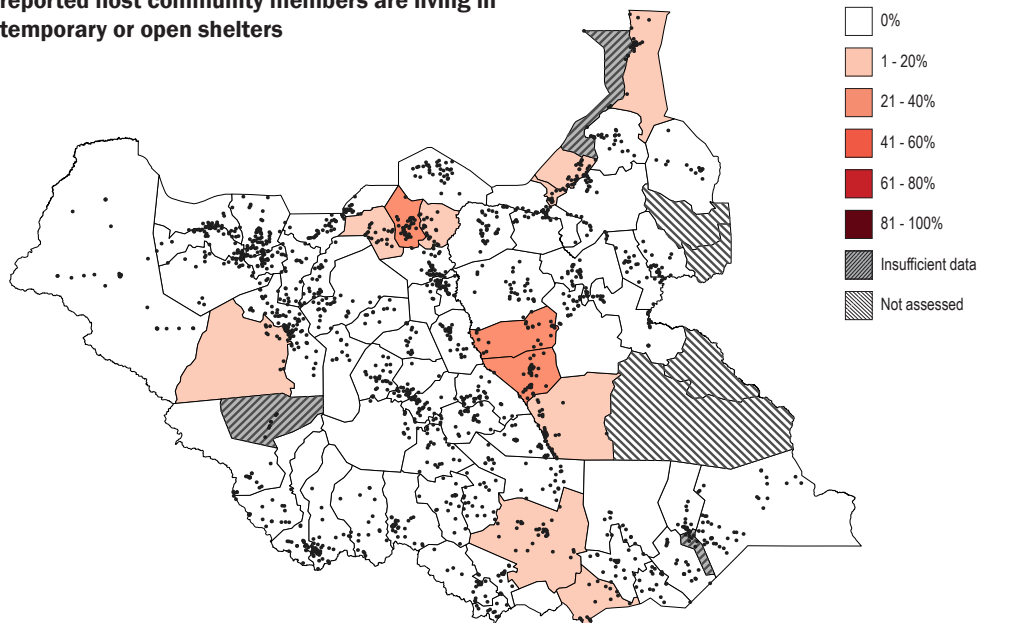
Assessment of Hard-to-Reach Areas in South Sudan

South Sudan Displacement Crisis

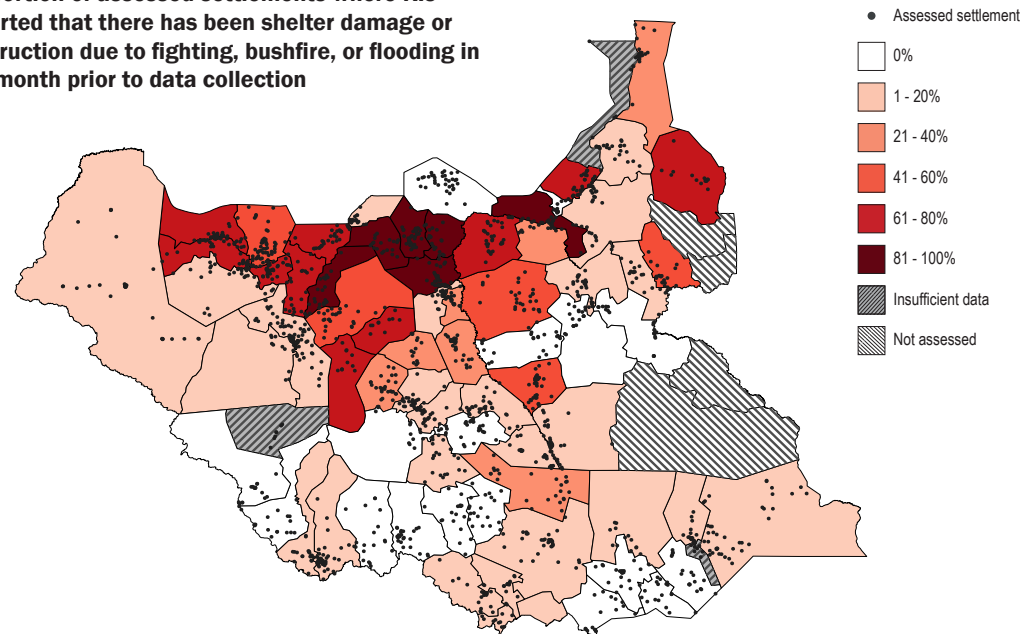
October 2022

## Shelter status

Proportion of assessed settlements where KIs reported host community members are living in temporary or open shelters



Proportion of assessed settlements where KIs reported that there has been shelter damage or destruction due to fighting, bushfire, or flooding in the month prior to data collection



## Host community shelter

Top five counties with the highest proportion of assessed settlements where KIs reported that the host community members are living in temporary or open shelters

Rubkona	36%
Twic East	24%
Duk	23%
Mayom	16%
Magwi	13%

## Shelter damage: conflict

Top five counties with the highest proportion of assessed settlements where KIs reported shelter damage due to conflict in the 30 days prior to data collection

Rubkona	83%
Guit	67%
Tonj North	64%
Fangak	62%
Gogrial East	58%

## Shelter damage: flooding

Top five counties with the highest proportion of assessed settlements where KIs reported shelter damage due to flooding in the 30 days prior to data collection

Mayom (n=19)	100%
Rubkona (n=37)	97%
Guit (n=20)	90%
Gogrial East (n=28)	86%
Koch (n=30)	83%

## Shelter damage: bushfire\*

Counties with the highest proportion of assessed settlements where KIs reported shelter damage due to bushfire in the 30 days prior to data collection

Abiemnhom (n=19)	5%
------------------	----

\* Shelter damage due to bushfires was not reported in assessed settlements in other counties.



# South Sudan - Shelter and Non-Food Items (NFIs)

## Assessment of Hard-to-Reach Areas in South Sudan

South Sudan Displacement Crisis

October 2022

	County	No. of assessed settlements
1	Abiemnhom	19
2	Akobo	23
3	Aweil Centre	31
4	Aweil East	61
5	Aweil North	33
6	Aweil South	29
7	Aweil West	32
8	Awerial	24
9	Ayod	33
10	Baliet	22
11	Bor South	50
12	Budi	19
13	Canal/Pigi	16
14	Cueibet	27
15	Duk	22
16	Ezo	20
17	Fangak	37
18	Fashoda	33
19	Gogrial East	28
20	Gogrial West	23
21	Guit	20
22	Ibba	19
23	Ikotos	19
24	Juba	32
25	Jur River	59
26	Kajo-keji	20
27	Kapoeta East	39
28	Kapoeta North	22
29	Kapoeta South	8
30	Koch	33

	County	No. of assessed settlements
31	Lafon	14
32	Lainya	16
33	Leer	22
34	Luakpiny/Nasir	20
35	Maban	16
36	Magwi	15
37	Malakal	18
38	Manyo	9
39	Maridi	27
40	Mayendit	19
41	Mayom	22
42	Melut	26
43	Morobo	11
44	Mundri East	20
45	Mundri West	20
46	Mvolo	22
47	Nagero	7
48	Nyirol	28
49	Nzara	22
50	Panyijiar	35
51	Panyikang	14
52	Pariang	34
53	Raja	34
54	Renk	40
55	Rubkona	37
56	Rumbek Centre	29
57	Rumbek East	28
58	Rumbek North	13
59	Tambura	20
60	Terekeka	24

	County	No. of assessed settlements
61	Tonj East	10
62	Tonj North	26
63	Tonj South	10
64	Torit	24
65	Twic	30
66	Twic East	39
67	Ulang	22
68	Uror	19
69	Wau	39
70	Wulu	13
71	Yambio	45
72	Yei	24
73	Yirol East	30
74	Yirol West	28