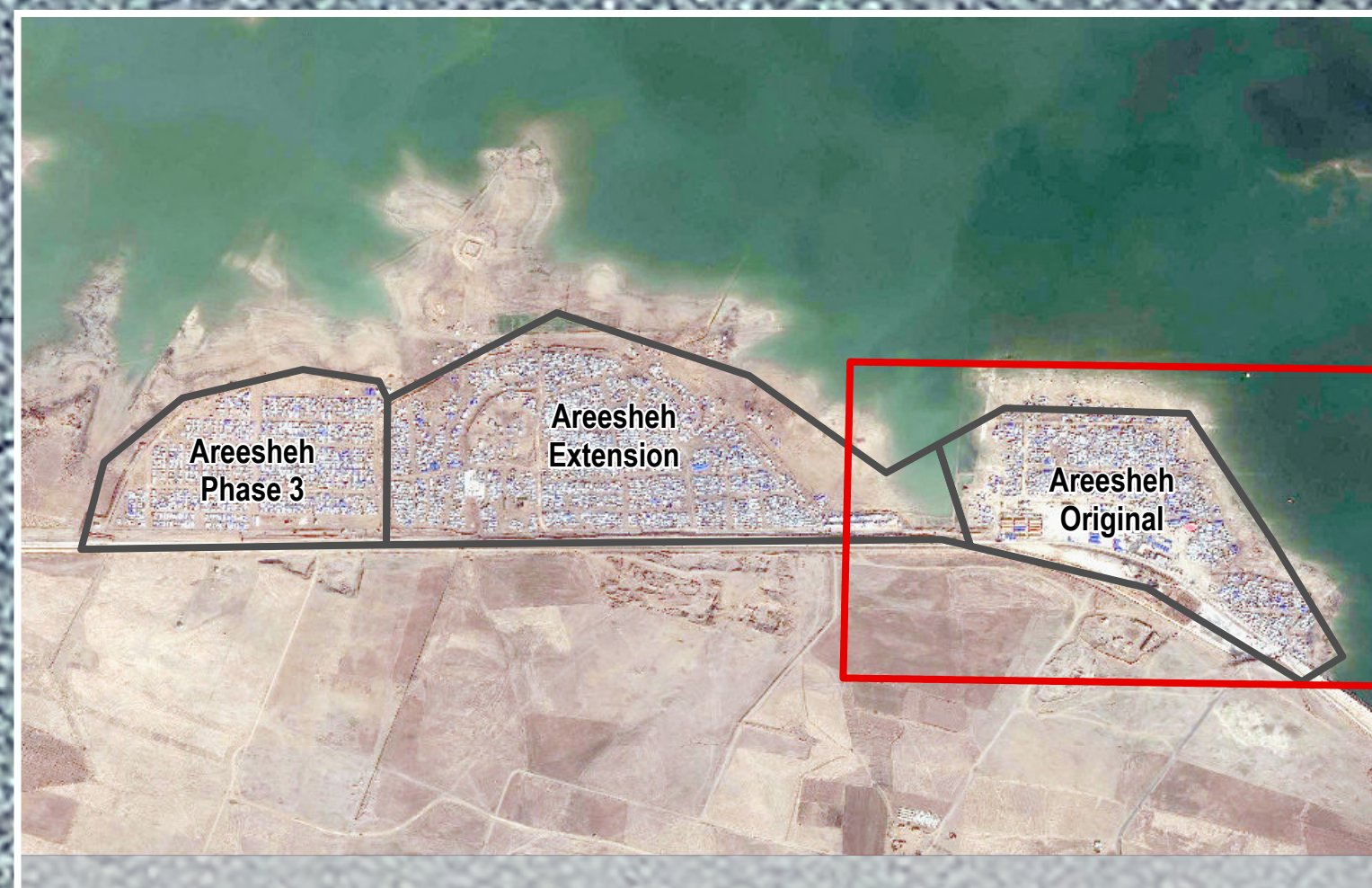


SYRIA – Areesheh Original IDP Camp

General Infrastructure – As of May 2020

For Humanitarian Purposes Only
Production date : 27 May 2020



IMPORTANT: camp infrastructure data collected 2 March 2020, satellite imagery obtained 15 May 2020

	Latrines: 145 122 have locks (84%) 8 female-only (5%)		Water tanks: 1m ³ : 9 2m ³ : 55 5m ³ : 1
	Showers: 0	Total tank capacity: 124m ³	

General infrastructure

- Camp entrance
- Block
- Sector
- Camp boundary

- Mosque
- Kitchen
- Kitchen (used as a shelter)
- Camp management
- Child-friendly space
- Distribution
- Education
- Market
- Mass tent
- NGO clinic
- School
- Services
- Storage
- UN / NGO office

Sanitation infrastructure

Water tank capacity

- 1 m³
- 2 m³
- 5 m³

Latrines

- 1 latrine
- 2-4 latrines
- 5-7 latrines
- 8+ latrines

Projection: WGS 1984 UTM Zone 37N
Contact: mena.reach@impactinitiatives.org

Data Sources:
Infrastructure: REACH
Satellite imagery: Pleiades-1A from 15 May 2020
Copyright: CNES
Source: Airbus DS
File name:
REACH_SYR_Map_Areesheh_Original_CAMP_27MAY20_A0

Note: Data, designations and boundaries contained on this map are not warranted to be error-free and do not imply acceptance by the REACH partners, associates, donors mentioned on this map.