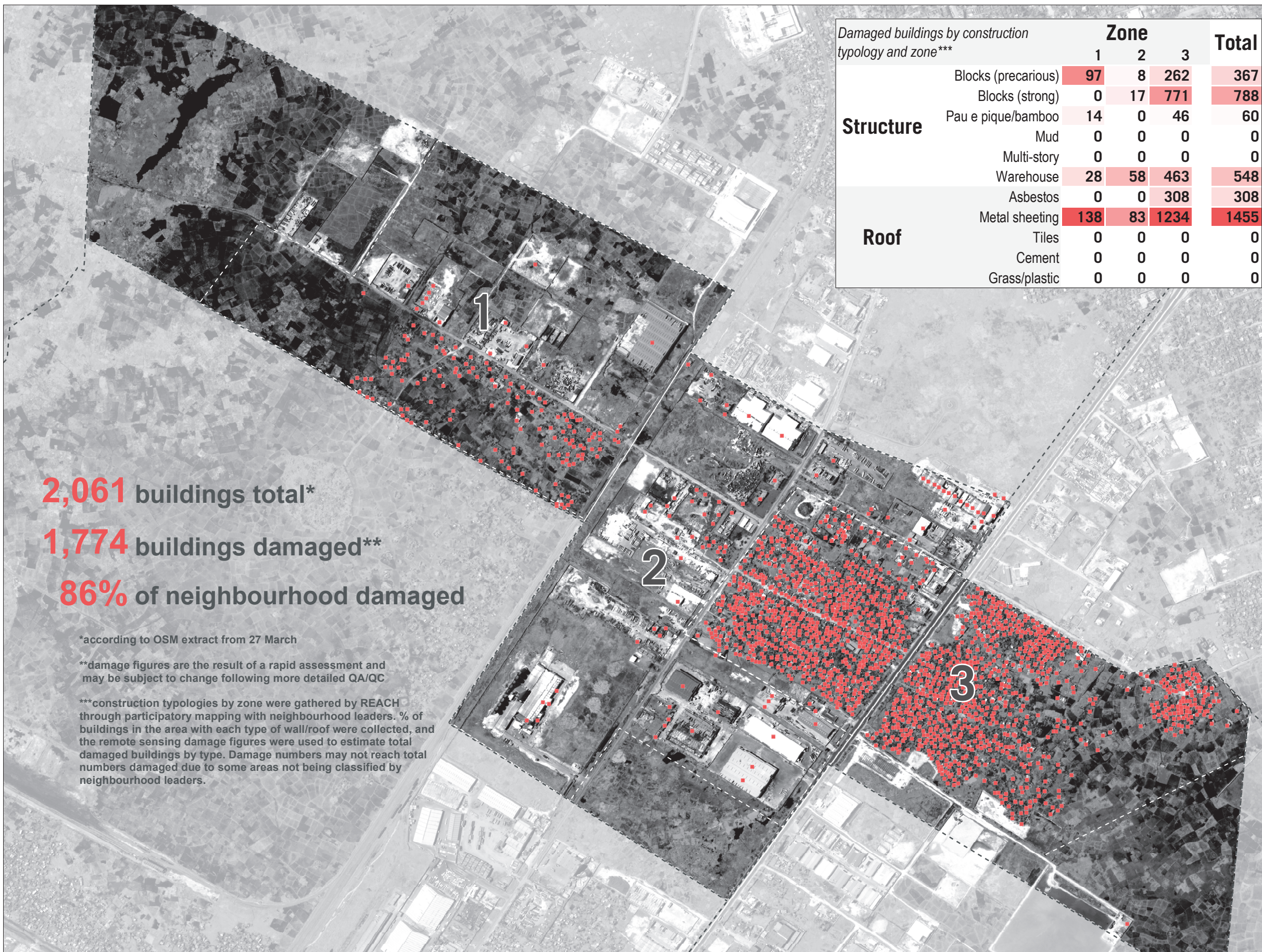


MOZAMBIQUE - Beira City

Vaz - Structural Damage by Construction Typology - As of 26 March 2019



Damaged buildings by construction typology and zone***		Zone			Total
		1	2	3	
Structure	Blocks (precarious)	97	8	262	367
	Blocks (strong)	0	17	771	788
	Pau e pique/bamboo	14	0	46	60
	Mud	0	0	0	0
	Multi-story	0	0	0	0
Roof	Warehouse	28	58	463	548
	Asbestos	0	0	308	308
	Metal sheeting	138	83	1234	1455
	Tiles	0	0	0	0
	Cement	0	0	0	0
	Grass/plastic	0	0	0	0

2,061 buildings total*

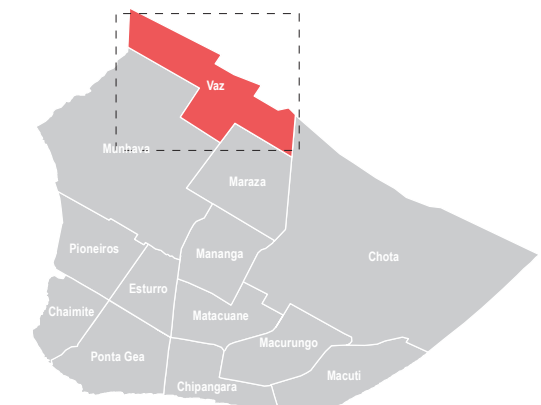
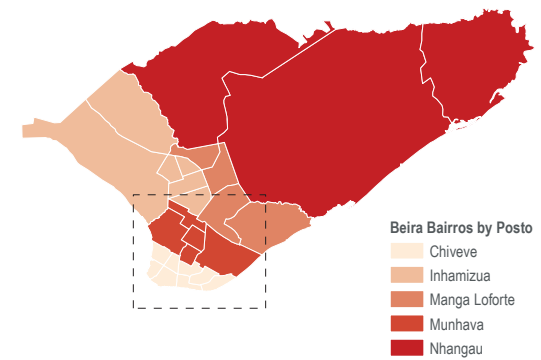
1,774 buildings damaged**

86% of neighbourhood damaged

*according to OSM extract from 27 March

**damage figures are the result of a rapid assessment and may be subject to change following more detailed QA/QC

***construction typologies by zone were gathered by REACH through participatory mapping with neighbourhood leaders. % of buildings in the area with each type of wall/roof were collected, and the remote sensing damage figures were used to estimate total damaged buildings by type. Damage numbers may not reach total numbers damaged due to some areas not being classified by neighbourhood leaders.



Data sources:
Damage sites - UNOSAT-REACH
Beira Bairros - INGC
Bairros Delineation - REACH
Administrative Boundaries (0-3) - OCHA
Satellite Imagery: WorldView-2 from 26 March 2019
Copyright: ©DigitalGlobe 2019
Source: US Dept of State Humanitarian Information Unit, NextView License



Coordinate System: GCS WGS 1984
File: MOZ_Map_Cycloneldai_Beira_DamageByType_Vaz_30APR2019
Contact: reach.mapping@impact-initiatives.org

Note: Data, designations and boundaries contained on this map are not warranted to be error-free and do not imply acceptance by the REACH partners, associated, donors mentioned on this map.

