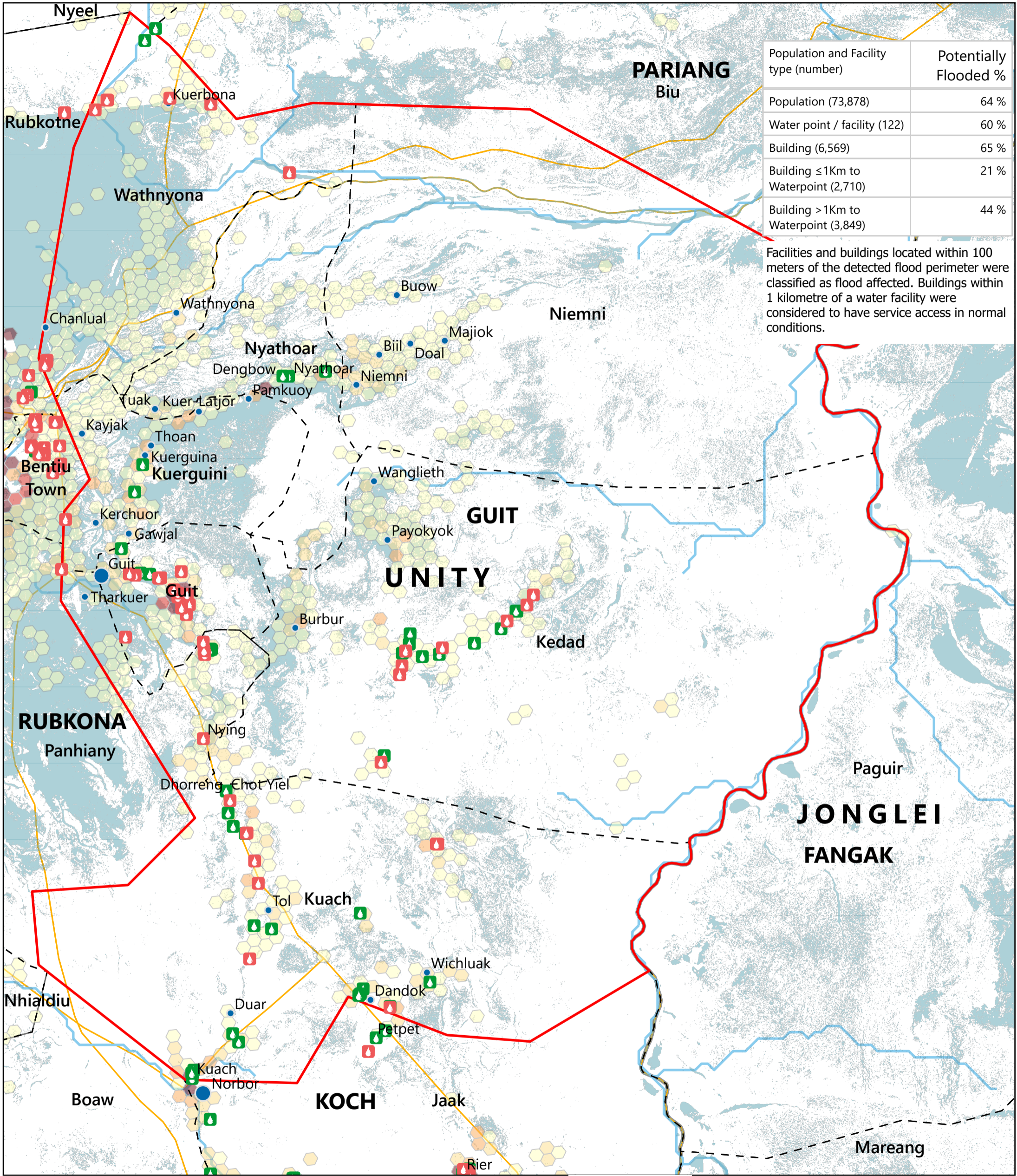


SOUTH SUDAN - Guit County

Flood Impact Map: Water Facilities (October 2025)

For Humanitarian Purposes Only
Production Date: 22 October 2025



Population and Facility type (number)	Potentially Flooded %
Population (73,878)	64 %
Water point / facility (122)	60 %
Building (6,569)	65 %
Building ≤1Km to Waterpoint (2,710)	21 %
Building >1Km to Waterpoint (3,849)	44 %

Facilities and buildings located within 100 meters of the detected flood perimeter were classified as flood affected. Buildings within 1 kilometre of a water facility were considered to have service access in normal conditions.



Population (Kontur, 2023)

- 1 - 100
- 101 - 250
- 251 - 500
- 501 - 750
- > 750

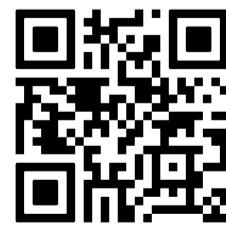
Settlements (Population)

- < 5,000
- 5,001 - 10,000
- > 10,000

Legend:

- Unaffected Waterpoint (Green icon)
- Potentially Affected Waterpoint (Red icon)
- Roads (Yellow line)
- River (Blue line)
- Payam (Dashed line)
- Focus County (Red outline)
- County (Black outline)
- State (Grey outline)

Satellite-detected flood extent (FEWSNET, as of 30th September 2025)



Data sources: Source: REACH, OCHA, UNMISS, IOM_DTM, UNOSAT, FEWSNET, WHO, IOM, DTM, Global Google-Microsoft Open Buildings Dataset (2023)
Coordinate System: Name: GCS WGS 1984
File: REACH_SSD_Map_Unity_Guit_Flood_Impact_Water_22_Oct_2025
Contact: reach.mapping@impact-initiatives.org

Note: Data, designations and boundaries contained on this map are not warranted to be error-free and do not imply acceptance by REACH partners, associates or donors mentioned on this map.

