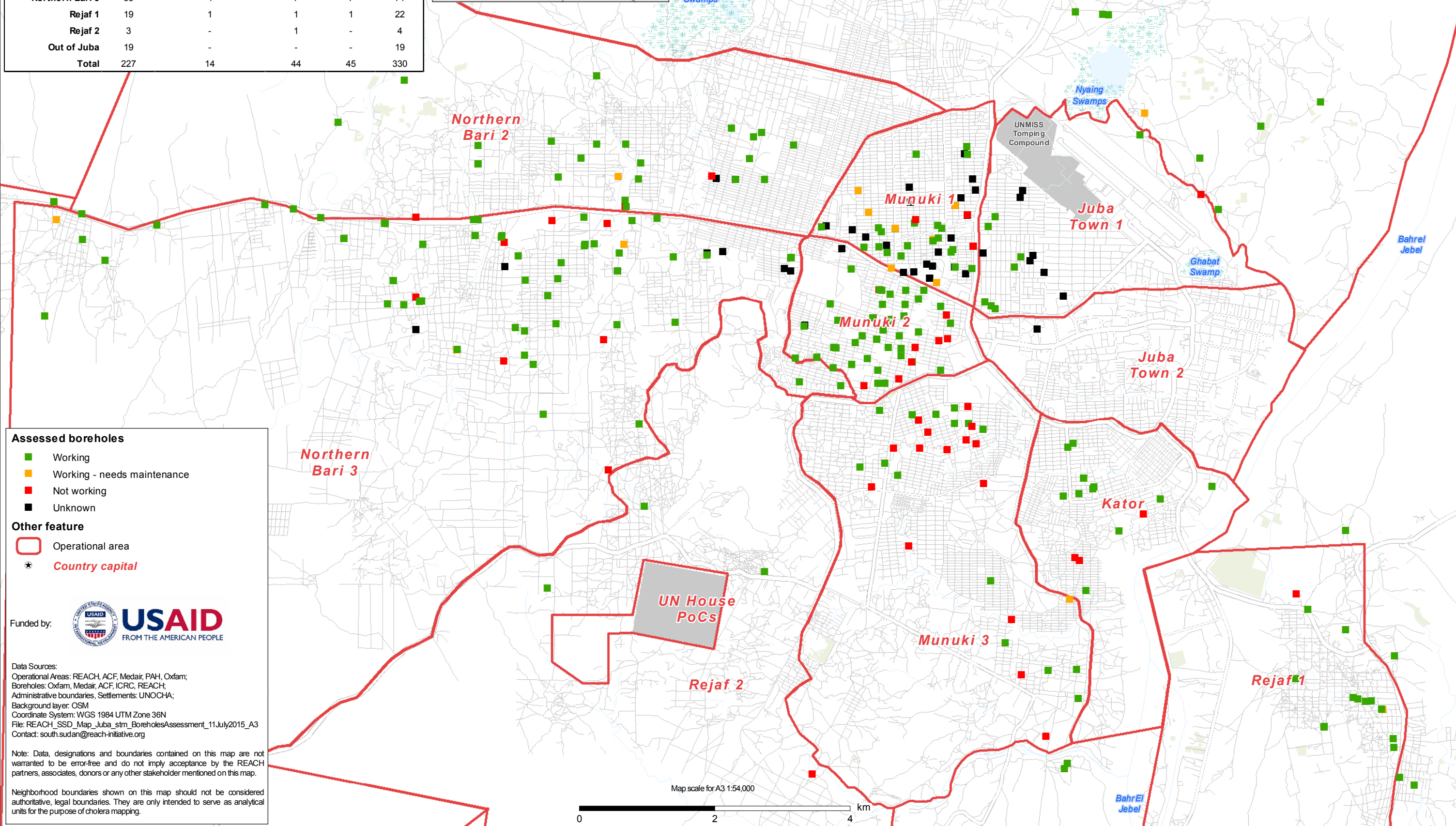
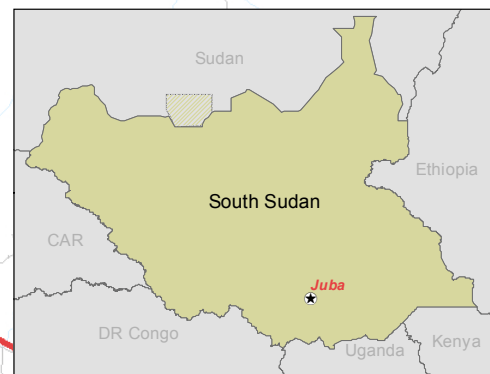


BOREHOLE ASSESSMENT

Operational Area	Working	Requires maintenance	Not Working	Unknown	Total
Juba Town 1	7	-	-	7	14
Juba Town 2	-	-	-	1	1
Kator	12	-	3	-	15
Munuki 1	22	7	3	23	55
Munuki 2	42	-	9	4	55
Munuki 3	15	1	15	-	31
Northern Bari 1	11	-	2	-	13
Northern Bari 2	24	1	3	2	30
Northern Bari 3	53	4	7	7	71
Rejaf 1	19	1	1	1	22
Rejaf 2	3	-	1	-	4
Out of Juba	19	-	-	-	19
Total	227	14	44	45	330



Assessed boreholes

- Working
- Working - needs maintenance
- Not working
- Unknown

Other feature

- Operational area
- Country capital

Funded by:



Data Sources:
Operational Areas: REACH, ACF, Medair, PAH, Oxfam;
Boreholes: Oxfam, Medair, ACF, ICRC, REACH;
Administrative boundaries, Settlements: UNOCHA;
Background layer: OSM
Coordinate System: WGS 1984 UTM Zone 36N
File: REACH_SSD_Map_Juba_stm_BoreholesAssessment_11July2015_A3
Contact: south.sudan@reach-initiative.org

Note: Data, designations and boundaries contained on this map are not warranted to be error-free and do not imply acceptance by the REACH partners, associates, donors or any other stakeholder mentioned on this map.

Neighborhood boundaries shown on this map should not be considered authoritative, legal boundaries. They are only intended to serve as analytical units for the purpose of cholera mapping.