

Introduction

While an estimated 2.1 million people live in displacement sites in Somalia¹, existing information on exact locations and site level vulnerabilities is sparse, and existing assessments have been ad-hoc and unharmonised, resulting in low comparability and verification.

The Detailed Site Assessment (DSA) was triggered in coordination with the Camp Coordination and Camp Management (CCCM) Cluster in order to provide the humanitarian community with up-to-date information on location of internally displaced persons (IDP) sites, the conditions and capacity of the sites and the humanitarian needs of the residents.

Target locations for assessment were selected based on needs identified by the CCCM Cluster

and accessibility for data collection.

A grid pattern approach² was applied during data collection to ensure that all IDP sites in the target area were identified. In each site, two key informant (KI) interviews were conducted: one with the site manager or community leader and one with a women's representative to ensure the perspectives of different groups were captured³. KI responses were aggregated to give one response per question per site.

This factsheet presents a summary of Gargaar Site profile along with the needs and priorities of IDPs residing in the site. As the data is captured through KIs, findings should be considered indicative only.

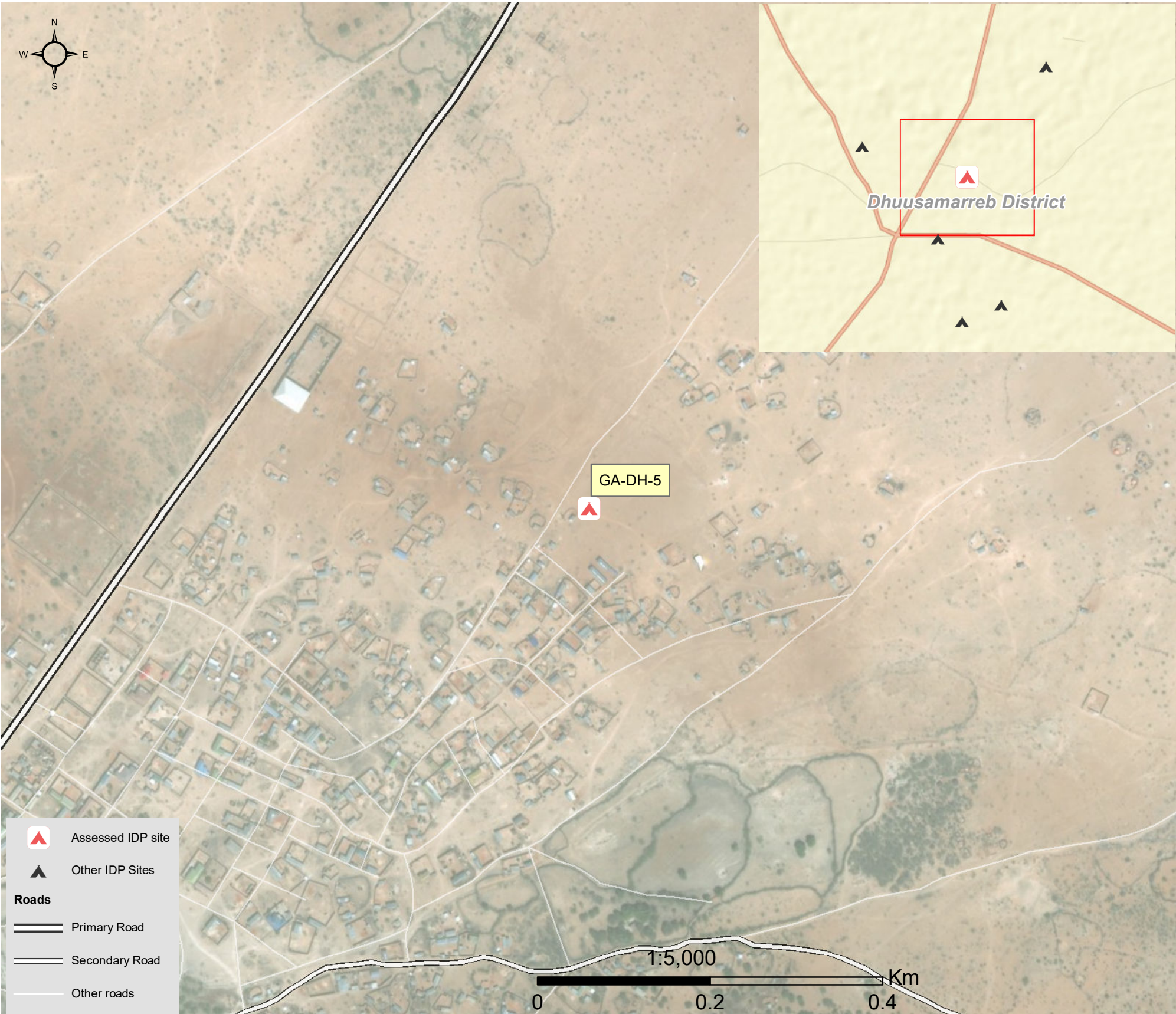
Date assessed: Sep - 2017

Location map



Assessed IDP sites in Dhuusamarreeb

Coordinates: Lat. 5.543, Long. 46.393



1.United Nations High Commissioner for Refugees (UNHCR): Protection & Return Monitoring Network (PRMN), September 2017

2.For each target location, the area was divided into 1km² grids. Enumerator teams then visited each grid to verify whether an IDP site was present. By visiting all grids, teams were able to determine the total number of sites in each location.

3.Where KI responses were significantly divergent, these were verified with the respective KIs with a higher reliability accorded to the response provided by the site manager or community leader.



Site Information

Settlement type	Planned site
Estimated number of individuals	4,026
Estimated number of households	671
Site capacity reached	Yes
Responsible management agency	Residents
Date when most site residents arrived	Jan-17
Site owner	Private



Protection

Number of vulnerable households:

Female-headed households	1
Child-headed households	0
Elderly individuals ⁴	147
Unaccompanied children	0
Individuals with a physical disability	3

Presence of shared community space	No
Presence of separate space for women/girls	No
Presence of child friendly space	No
Public lighting in the site	No
Type of landownership	Formal
Risk of eviction in next three months	No



WASH

Access to potable water	No
Number of latrines in the site:	
Latrines (mixed)	3
Latrines (male)	0
Latrines (female)	0
Access to handwashing facilities	No



Shelter and Non-Food Items (NFI)

Most common shelter types in the site⁵:

1. Timber and plastic sheet
2. CGI
3. N/A

Electricity available in the site	No
Access to a NFI market	Yes
Average walking time to the nearest NFI market	20 minutes
Perceived safe access to NFI market	Yes



Displacement

Estimated number of households per displacement group:

IDPs	571
Host community/ non-displaced	100
IDP households arrived in the past 3 months	46

Most common areas of origin:

First area of origin	Galgaduud
Second area of origin	Mudug
Third area of origin	N/A



Food Security

Primary source of food	Borrow food/money
Food distributions	None
Access to a food market	Yes



Health and Nutrition

Most common health issue(s) reported in the site:

1. AWD / Cholera
2. Malaria
3. N/A

Access to healthcare services	No
Average walking time to the nearest health service	N/A
Women give birth in the site	Yes
Access to nutrition services	No
Average walking time to the nearest nutrition service	N/A

Access to nutrition services: No



Education

Education services available	No
Average walking time to the nearest school	N/A

Education facilities available to residents in the site⁵:

1. N/A
2. N/A
3. N/A



Communication

Three most trusted sources of information⁵:

1. Friends, neighbours and family
2. Community leader
3. Radio

Most commonly spoken language	Somali Standard
-------------------------------	-----------------

4.More than 60 years old.

5.Key informants could select multiple responses.

Introduction

While an estimated 2.1 million people live in displacement sites in Somalia¹, existing information on exact locations and site level vulnerabilities is sparse, and existing assessments have been ad-hoc and unharmonised, resulting in low comparability and verification.

The Detailed Site Assessment (DSA) was triggered in coordination with the Camp Coordination and Camp Management (CCCM) Cluster in order to provide the humanitarian community with up-to-date information on location of internally displaced persons (IDP) sites, the conditions and capacity of the sites and the humanitarian needs of the residents.

Target locations for assessment were selected based on needs identified by the CCCM Cluster

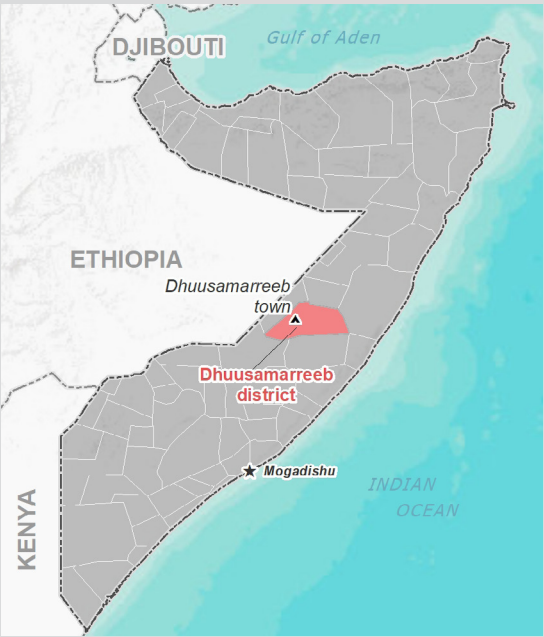
and accessibility for data collection.

A grid pattern approach² was applied during data collection to ensure that all IDP sites in the target area were identified. In each site, two key informant (KI) interviews were conducted: one with the site manager or community leader and one with a women's representative to ensure the perspectives of different groups were captured³. KI responses were aggregated to give one response per question per site.

This factsheet presents a summary of Hanano Site profile along with the needs and priorities of IDPs residing in the site. As the data is captured through KIs, findings should be considered indicative only.

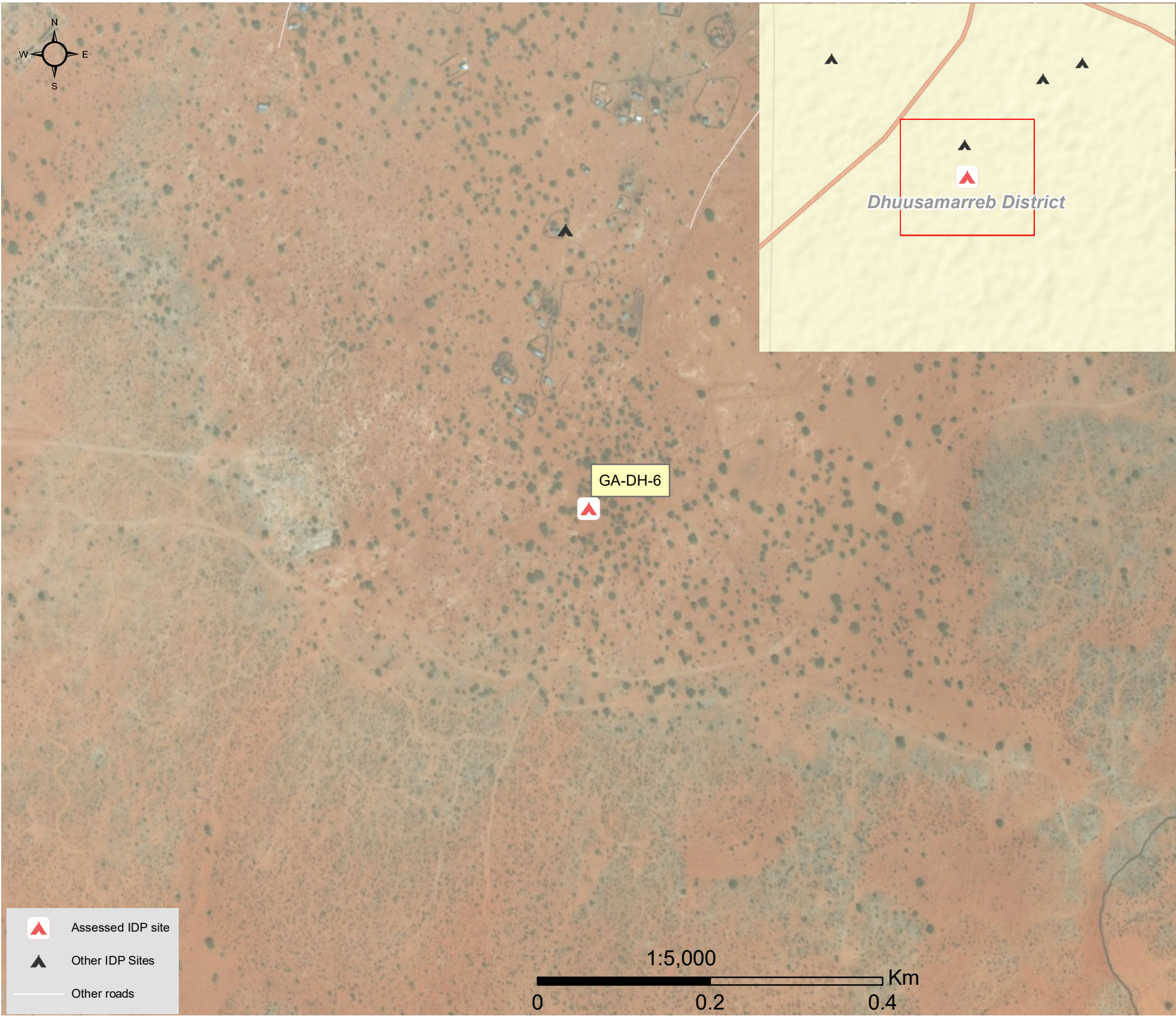
Date assessed: **Sep - 2017**

Location map



Assessed IDP sites in Dhuusamarreeb

Coordinates: Lat. 5.521, Long. 46.385



1.United Nations High Commissioner for Refugees (UNHCR): Protection & Return Monitoring Network (PRMN), September 2017

2.For each target location, the area was divided into 1km² grids. Enumerator teams then visited each grid to verify whether an IDP site was present. By visiting all grids, teams were able to determine the total number of sites in each location.

3.Where KI responses were significantly divergent, these were verified with the respective KIs with a higher reliability accorded to the response provided by the site manager or community leader.



Site Information

Settlement type	Spontaneous site
Estimated number of individuals	3,595
Estimated number of households	838
Site capacity reached	No
Responsible management agency	No management
Date when most site residents arrived	Jan-17
Site owner	Private



Protection

Number of vulnerable households:

Female-headed households	45
Child-headed households	0
Elderly individuals ⁴	435
Unaccompanied children	0
Individuals with a physical disability	150
Presence of shared community space	No
Presence of separate space for women/girls	No
Presence of child friendly space	No
Public lighting in the site	No
Type of landownership	None
Risk of eviction in next three months	No



WASH

Access to potable water	No
Number of latrines in the site:	
Latrines (mixed)	0
Latrines (male)	0
Latrines (female)	0
Access to handwashing facilities	No



Shelter and Non-Food Items (NFI)

Most common shelter types in the site⁵:

1. Buul	
2. Tent	
3. CGI	
Electricity available in the site	No
Access to a NFI market	No
Average walking time to the nearest NFI market	N/A
Perceived safe access to NFI market	N/A



Displacement

Estimated number of households per displacement group:

IDPs	838
Host community/ non-displaced	0
IDP households arrived in the past 3 months	180

Most common areas of origin:

First area of origin	Galgaduud
Second area of origin	Mudug
Third area of origin	Hiraan



Food Security

Primary source of food	Borrow food/money
Food distributions	None
Access to a food market	Yes



Health and Nutrition

Most common health issue(s) reported in the site:

1. AWD / Cholera
2. Malaria
3. Diphtheria

Access to healthcare services	No
Average walking time to the nearest health service	N/A
Women give birth in the site	Yes
Access to nutrition services	No
Average walking time to the nearest nutrition service	N/A

Access to nutrition services: No



Education

Education services available	No
Average walking time to the nearest school	N/A

Education facilities available to residents in the site⁵:

1. N/A
2. N/A
3. N/A



Communication

Three most trusted sources of information⁵:

1. Friends, neighbours and family
2. Radio
3. N/A

Most commonly spoken language	Somali Standard
-------------------------------	-----------------

4.More than 60 years old.

5.Key informants could select multiple responses.

Introduction

While an estimated 2.1 million people live in displacement sites in Somalia¹, existing information on exact locations and site level vulnerabilities is sparse, and existing assessments have been ad-hoc and unharmonised, resulting in low comparability and verification.

The Detailed Site Assessment (DSA) was triggered in coordination with the Camp Coordination and Camp Management (CCCM) Cluster in order to provide the humanitarian community with up-to-date information on location of internally displaced persons (IDP) sites, the conditions and capacity of the sites and the humanitarian needs of the residents.

Target locations for assessment were selected based on needs identified by the CCCM Cluster

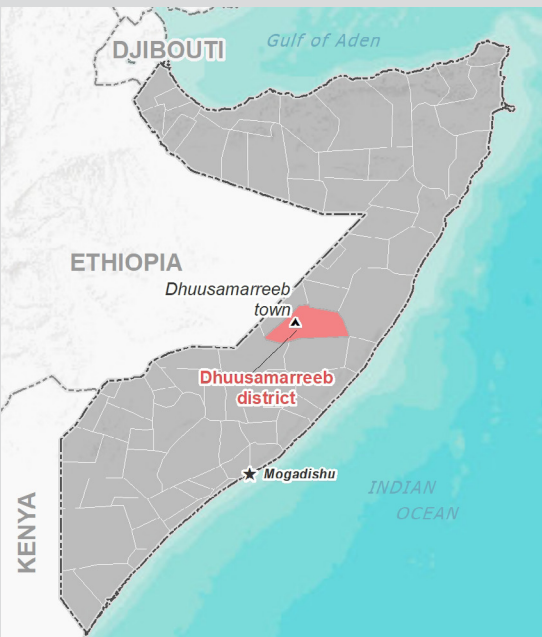
and accessibility for data collection.

A grid pattern approach² was applied during data collection to ensure that all IDP sites in the target area were identified. In each site, two key informant (KI) interviews were conducted: one with the site manager or community leader and one with a women's representative to ensure the perspectives of different groups were captured³. KI responses were aggregated to give one response per question per site.

This factsheet presents a summary of Dawacooley Site profile along with the needs and priorities of IDPs residing in the site. As the data is captured through KIs, findings should be considered indicative only.

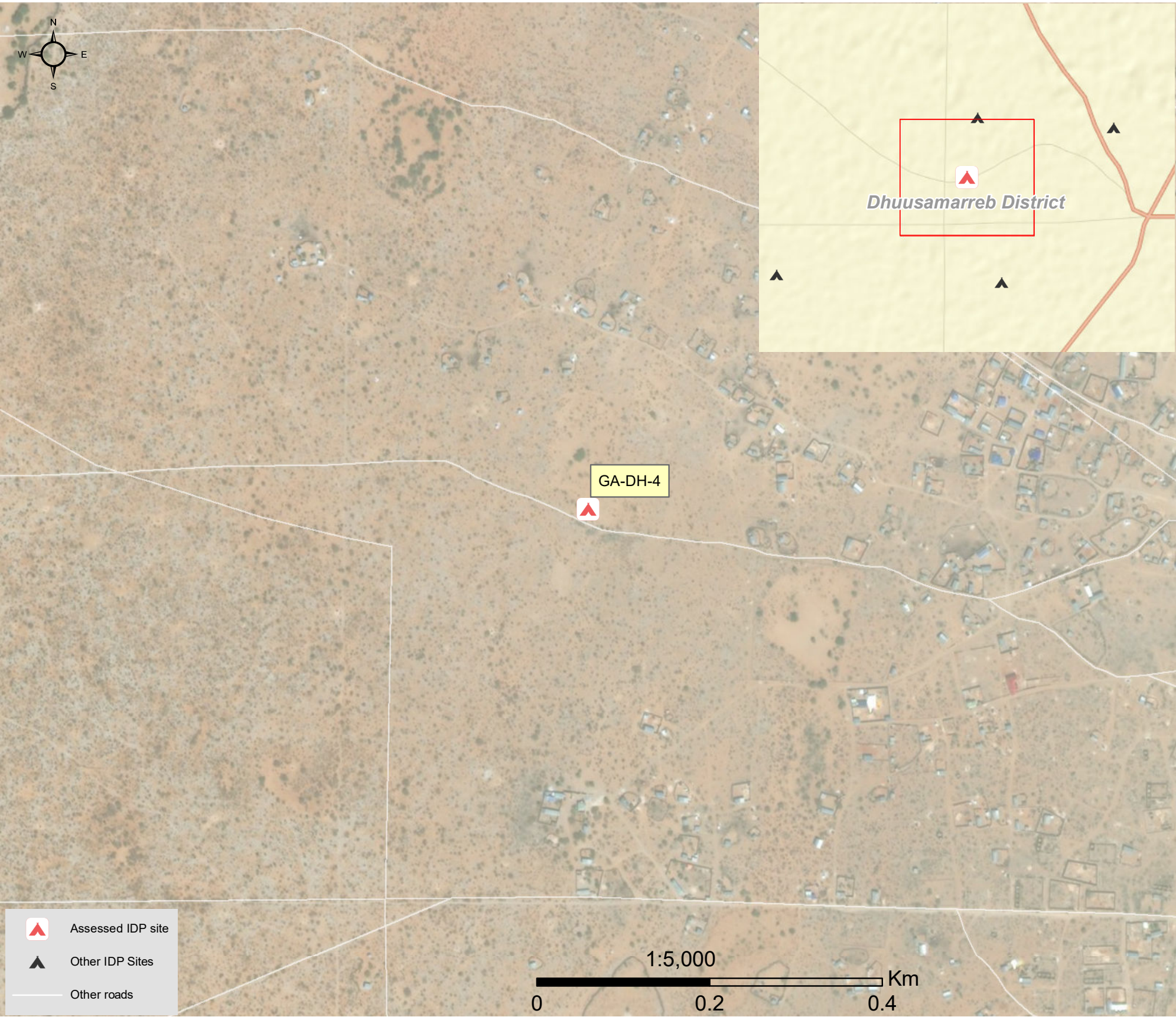
Date assessed: **Sep - 2017**

Location map



Assessed IDP sites in Dhuusamarreeb

Coordinates: Lat. 5.541, Long. 46.37



1.United Nations High Commissioner for Refugees (UNHCR): Protection & Return Monitoring Network (PRMN), September 2017

2.For each target location, the area was divided into 1km² grids. Enumerator teams then visited each grid to verify whether an IDP site was present. By visiting all grids, teams were able to determine the total number of sites in each location.

3.Where KI responses were significantly divergent, these were verified with the respective KIs with a higher reliability accorded to the response provided by the site manager or community leader.



Site Information

Settlement type	Spontaneous site
Estimated number of individuals	5,000
Estimated number of households	1,070
Site capacity reached	No
Responsible management agency	No management
Date when most site residents arrived	Jan-17
Site owner	Private



Protection

Number of vulnerable households:

Female-headed households	400
Child-headed households	30
Elderly individuals ⁴	1,000
Unaccompanied children	100
Individuals with a physical disability	140

Presence of shared community space	No
Presence of separate space for women/girls	No
Presence of child friendly space	No
Public lighting in the site	No
Type of landownership	Formal
Risk of eviction in next three months	No



WASH

Access to potable water	No
Number of latrines in the site:	
Latrines (mixed)	0
Latrines (male)	0
Latrines (female)	0
Access to handwashing facilities	No



Shelter and Non-Food Items (NFI)

Most common shelter types in the site⁵:

1. Buul	
2. N/A	
3. N/A	
Electricity available in the site	No
Access to a NFI market	Yes
Average walking time to the nearest NFI market	30 minutes
Perceived safe access to NFI market	Yes



Displacement

Estimated number of households per displacement group:

IDPs	1,070
Host community/ non-displaced	0
IDP households arrived in the past 3 months	0

Most common areas of origin:

First area of origin	N/A
Second area of origin	N/A
Third area of origin	N/A



Food Security

Primary source of food	Unknown
Food distributions	None
Access to a food market	Yes



Health and Nutrition

Most common health issue(s) reported in the site:

1. AWD / Cholera
2. Malaria
3. N/A

Access to healthcare services	No
Average walking time to the nearest health service	N/A
Women give birth in the site	Yes
Access to nutrition services	No
Average walking time to the nearest nutrition service	N/A

Access to nutrition services: No



Education

Education services available	No
Average walking time to the nearest school	N/A

Education facilities available to residents in the site⁵:

1. N/A
2. N/A
3. N/A



Communication

Three most trusted sources of information⁵:

1. Friends, neighbours and family
2. Radio
3. N/A

Most commonly spoken language	Somali Standard
-------------------------------	-----------------

4.More than 60 years old.

5.Key informants could select multiple responses.



Introduction

While an estimated 2.1 million people live in displacement sites in Somalia¹, existing information on exact locations and site level vulnerabilities is sparse, and existing assessments have been ad-hoc and unharmonised, resulting in low comparability and verification.

The Detailed Site Assessment (DSA) was triggered in coordination with the Camp Coordination and Camp Management (CCCM) Cluster in order to provide the humanitarian community with up-to-date information on location of internally displaced persons (IDP) sites, the conditions and capacity of the sites and the humanitarian needs of the residents.

Target locations for assessment were selected based on needs identified by the CCCM Cluster

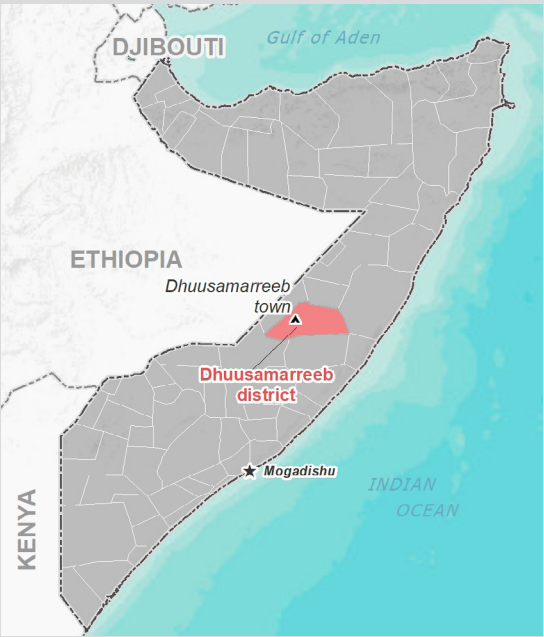
and accessibility for data collection.

A grid pattern approach² was applied during data collection to ensure that all IDP sites in the target area were identified. In each site, two key informant (KI) interviews were conducted: one with the site manager or community leader and one with a women's representative to ensure the perspectives of different groups were captured³. KI responses were aggregated to give one response per question per site.

This factsheet presents a summary of Hayaaan Site profile along with the needs and priorities of IDPs residing in the site. As the data is captured through KIs, findings should be considered indicative only.

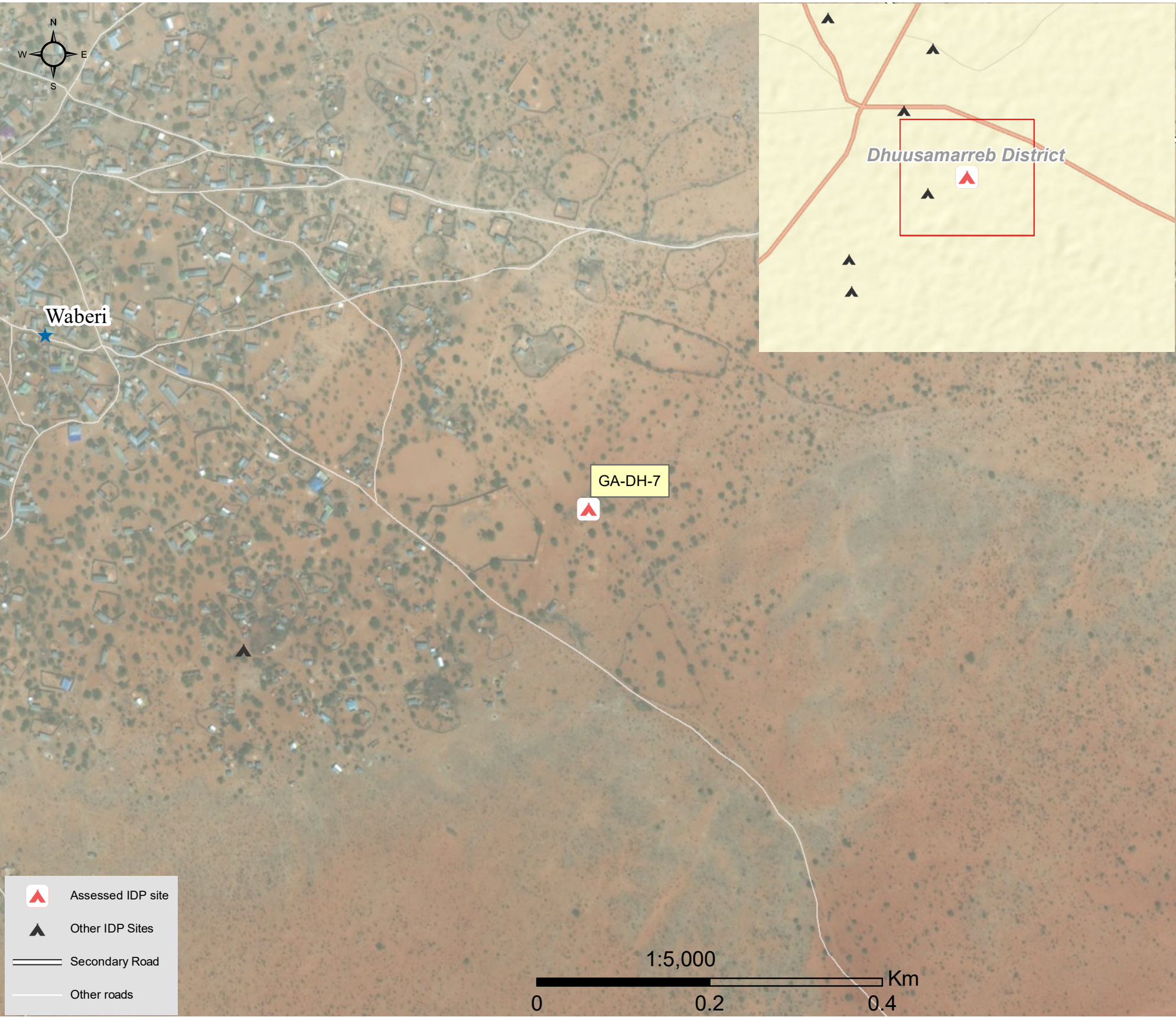
Date assessed: **Sep - 2017**

Location map



Assessed IDP sites in Dhuusamarreeb

Coordinates: Lat. 5.531, Long. 46.396



1.United Nations High Commissioner for Refugees (UNHCR): Protection & Return Monitoring Network (PRMN), September 2017

2.For each target location, the area was divided into 1km² grids. Enumerator teams then visited each grid to verify whether an IDP site was present. By visiting all grids, teams were able to determine the total number of sites in each location.

3.Where KI responses were significantly divergent, these were verified with the respective KIs with a higher reliability accorded to the response provided by the site manager or community leader.



Site Information

Settlement type	Spontaneous site
Estimated number of individuals	800
Estimated number of households	300
Site capacity reached	No
Responsible management agency	Residents
Date when most site residents arrived	Jan-17
Site owner	Private



Protection

Number of vulnerable households:	
Female-headed households	10
Child-headed households	20
Elderly individuals ⁴	200
Unaccompanied children	50
Individuals with a physical disability	50
Presence of shared community space	No
Presence of separate space for women/girls	Yes
Presence of child friendly space	No
Public lighting in the site	No
Type of landownership	Formal
Risk of eviction in next three months	No



WASH

Access to potable water	No
Number of latrines in the site:	
Latrines (mixed)	0
Latrines (male)	0
Latrines (female)	0
Access to handwashing facilities	No



Shelter and Non-Food Items (NFI)

Most common shelter types in the site⁵:	
1. Buul	
2. N/A	
3. N/A	
Electricity available in the site	No
Access to a NFI market	Yes
Average walking time to the nearest NFI market	30 minutes
Perceived safe access to NFI market	No



Displacement

Estimated number of households per displacement group:	
IDPs	300
Host community/ non-displaced	0
IDP households arrived in the past 3 months	0
Most common areas of origin:	
First area of origin	N/A
Second area of origin	N/A
Third area of origin	N/A



Food Security

Primary source of food	Unknown
Food distributions	None
Access to a food market	Yes



Health and Nutrition

Most common health issue(s) reported in the site:	
1. Malaria	
2. N/A	
3. N/A	
Access to healthcare services	No
Average walking time to the nearest health service	N/A
Women give birth in the site	Yes
Access to nutrition services	No
Average walking time to the nearest nutrition service	N/A
Access to nutrition services:	No



Education

Education services available	No
Average walking time to the nearest school	N/A
Education facilities available to residents in the site⁵:	
1. N/A	
2. N/A	
3. N/A	



Communication

Three most trusted sources of information⁵:	
1. Friends, neighbours and family	
2. Radio	
3. N/A	
Most commonly spoken language	Somali Standard

4.More than 60 years old.

5.Key informants could select multiple responses.



Introduction

While an estimated 2.1 million people live in displacement sites in Somalia¹, existing information on exact locations and site level vulnerabilities is sparse, and existing assessments have been ad-hoc and unharmonised, resulting in low comparability and verification.

The Detailed Site Assessment (DSA) was triggered in coordination with the Camp Coordination and Camp Management (CCCM) Cluster in order to provide the humanitarian community with up-to-date information on location of internally displaced persons (IDP) sites, the conditions and capacity of the sites and the humanitarian needs of the residents.

Target locations for assessment were selected based on needs identified by the CCCM Cluster

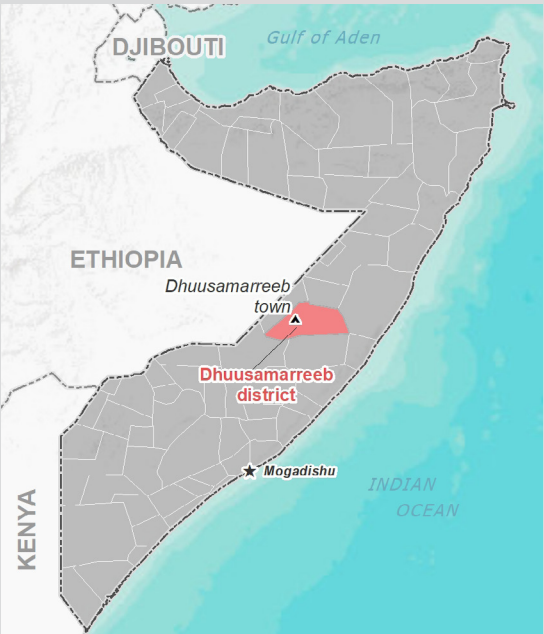
and accessibility for data collection.

A grid pattern approach² was applied during data collection to ensure that all IDP sites in the target area were identified. In each site, two key informant (KI) interviews were conducted: one with the site manager or community leader and one with a women's representative to ensure the perspectives of different groups were captured³. KI responses were aggregated to give one response per question per site.

This factsheet presents a summary of Ceel Xamuud Site profile along with the needs and priorities of IDPs residing in the site. As the data is captured through KIs, findings should be considered indicative only.

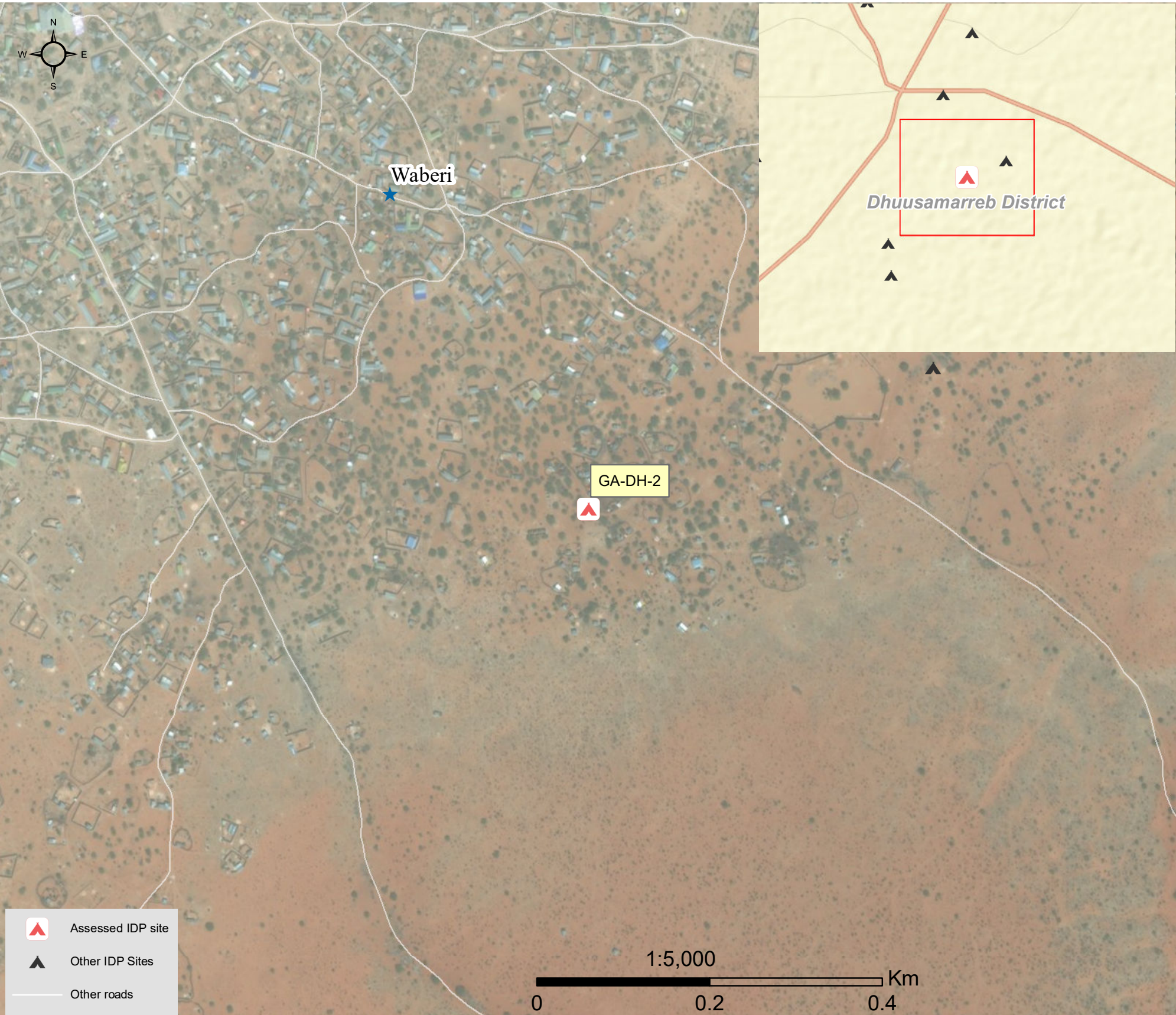
Date assessed: **Sep - 2017**

Location map



Assessed IDP sites in Dhuusamarreeb

Coordinates: Lat. 5.53, Long. 46.392



1.United Nations High Commissioner for Refugees (UNHCR): Protection & Return Monitoring Network (PRMN), September 2017

2.For each target location, the area was divided into 1km² grids. Enumerator teams then visited each grid to verify whether an IDP site was present. By visiting all grids, teams were able to determine the total number of sites in each location.

3.Where KI responses were significantly divergent, these were verified with the respective KIs with a higher reliability accorded to the response provided by the site manager or community leader.



Site Information

Settlement type	Spontaneous site
Estimated number of individuals	3,920
Estimated number of households	980
Site capacity reached	Yes
Responsible management agency	No management
Date when most site residents arrived	Jan-07
Site owner	Private



Protection

Number of vulnerable households:	
Female-headed households	310
Child-headed households	0
Elderly individuals ⁴	110
Unaccompanied children	0
Individuals with a physical disability	190
Presence of shared community space	No
Presence of separate space for women/girls	No
Presence of child friendly space	No
Public lighting in the site	No
Type of landownership	None
Risk of eviction in next three months	No



WASH

Access to potable water	No
Number of latrines in the site:	
Latrines (mixed)	1
Latrines (male)	0
Latrines (female)	0
Access to handwashing facilities	No



Shelter and Non-Food Items (NFI)

Most common shelter types in the site⁵:	
1. Buul	
2. Tent	
3. CGI	
Electricity available in the site	No
Access to a NFI market	No
Average walking time to the nearest NFI market	N/A
Perceived safe access to NFI market	N/A



Displacement

Estimated number of households per displacement group:	
IDPs	980
Host community/ non-displaced	0
IDP households arrived in the past 3 months	0
Most common areas of origin:	
First area of origin	N/A
Second area of origin	N/A
Third area of origin	N/A



Food Security

Primary source of food	Borrow food/money
Food distributions	None
Access to a food market	No



Health and Nutrition

Most common health issue(s) reported in the site:	
1. AWD / Cholera	
2. Malaria	
3. N/A	
Access to healthcare services	No
Average walking time to the nearest health service	N/A
Women give birth in the site	Yes
Access to nutrition services	No
Average walking time to the nearest nutrition service	N/A
Access to nutrition services:	No



Education

Education services available	No
Average walking time to the nearest school	N/A
Education facilities available to residents in the site⁵:	
1. N/A	
2. N/A	
3. N/A	



Communication

Three most trusted sources of information⁵:	
1. Friends, neighbours and family	
2. Community leader	
3. Radio	
Most commonly spoken language	Somali Standard

4.More than 60 years old.

5.Key informants could select multiple responses.



Introduction

While an estimated 2.1 million people live in displacement sites in Somalia¹, existing information on exact locations and site level vulnerabilities is sparse, and existing assessments have been ad-hoc and unharmonised, resulting in low comparability and verification.

The Detailed Site Assessment (DSA) was triggered in coordination with the Camp Coordination and Camp Management (CCCM) Cluster in order to provide the humanitarian community with up-to-date information on location of internally displaced persons (IDP) sites, the conditions and capacity of the sites and the humanitarian needs of the residents.

Target locations for assessment were selected based on needs identified by the CCCM Cluster

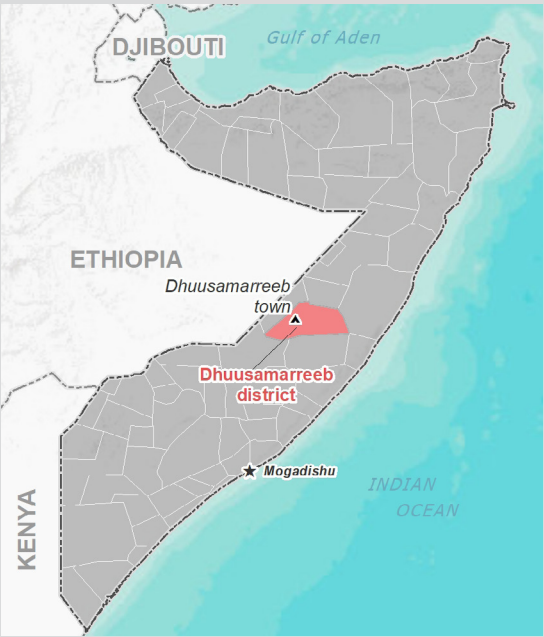
and accessibility for data collection.

A grid pattern approach² was applied during data collection to ensure that all IDP sites in the target area were identified. In each site, two key informant (KI) interviews were conducted: one with the site manager or community leader and one with a women's representative to ensure the perspectives of different groups were captured³. KI responses were aggregated to give one response per question per site.

This factsheet presents a summary of Tuulo-Og Site profile along with the needs and priorities of IDPs residing in the site. As the data is captured through KIs, findings should be considered indicative only.

Date assessed: Sep - 2017

Location map



Assessed IDP sites in Dhuusamarreeb

Coordinates: Lat. 5.546, Long. 46.383



1.United Nations High Commissioner for Refugees (UNHCR): Protection & Return Monitoring Network (PRMN), September 2017

2.For each target location, the area was divided into 1km² grids. Enumerator teams then visited each grid to verify whether an IDP site was present. By visiting all grids, teams were able to determine the total number of sites in each location.

3.Where KI responses were significantly divergent, these were verified with the respective KIs with a higher reliability accorded to the response provided by the site manager or community leader.



Site Information

Settlement type	Spontaneous site
Estimated number of individuals	4,110
Estimated number of households	685
Site capacity reached	No
Responsible management agency	Residents
Date when most site residents arrived	Jan-14
Site owner	Private



Protection

Number of vulnerable households:

Female-headed households	0
Child-headed households	0
Elderly individuals ⁴	318
Unaccompanied children	0
Individuals with a physical disability	2
Presence of shared community space	Yes
Presence of separate space for women/girls	No
Presence of child friendly space	No
Public lighting in the site	No
Type of landownership	Unknown
Risk of eviction in next three months	No



WASH

Access to potable water	Yes
Number of latrines in the site:	
Latrines (mixed)	1
Latrines (male)	0
Latrines (female)	0
Access to handwashing facilities	No



Shelter and Non-Food Items (NFI)

Most common shelter types in the site⁵:

1. Tent	
2. Stone	
3. CGI	
Electricity available in the site	No
Access to a NFI market	Yes
Average walking time to the nearest NFI market	30 minutes
Perceived safe access to NFI market	Yes



Displacement

Estimated number of households per displacement group:

IDPs	625
Host community/ non-displaced	60
IDP households arrived in the past 3 months	190

Most common areas of origin:

First area of origin	Galgaduud
Second area of origin	Mudug
Third area of origin	N/A



Food Security

Primary source of food	Market purchase
Food distributions	None
Access to a food market	Yes



Health and Nutrition

Most common health issue(s) reported in the site:

1. AWD / Cholera
2. Malaria
3. N/A

Access to healthcare services	No
Average walking time to the nearest health service	N/A
Women give birth in the site	Yes
Access to nutrition services	No
Average walking time to the nearest nutrition service	N/A

Access to nutrition services: No



Education

Education services available	No
Average walking time to the nearest school	N/A

Education facilities available to residents in the site⁵:

1. N/A
2. N/A
3. N/A



Communication

Three most trusted sources of information⁵:

1. Friends, neighbours and family
2. Radio
3. N/A

Most commonly spoken language	Somali Standard
-------------------------------	-----------------

4.More than 60 years old.

5.Key informants could select multiple responses.

Introduction

While an estimated 2.1 million people live in displacement sites in Somalia¹, existing information on exact locations and site level vulnerabilities is sparse, and existing assessments have been ad-hoc and unharmonised, resulting in low comparability and verification.

The Detailed Site Assessment (DSA) was triggered in coordination with the Camp Coordination and Camp Management (CCCM) Cluster in order to provide the humanitarian community with up-to-date information on location of internally displaced persons (IDP) sites, the conditions and capacity of the sites and the humanitarian needs of the residents.

Target locations for assessment were selected based on needs identified by the CCCM Cluster

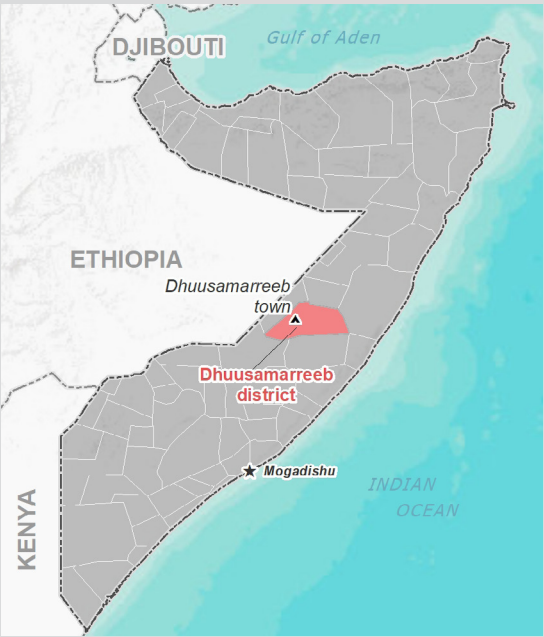
and accessibility for data collection.

A grid pattern approach² was applied during data collection to ensure that all IDP sites in the target area were identified. In each site, two key informant (KI) interviews were conducted: one with the site manager or community leader and one with a women's representative to ensure the perspectives of different groups were captured³. KI responses were aggregated to give one response per question per site.

This factsheet presents a summary of Xero Milatari Site profile along with the needs and priorities of IDPs residing in the site. As the data is captured through KIs, findings should be considered indicative only.

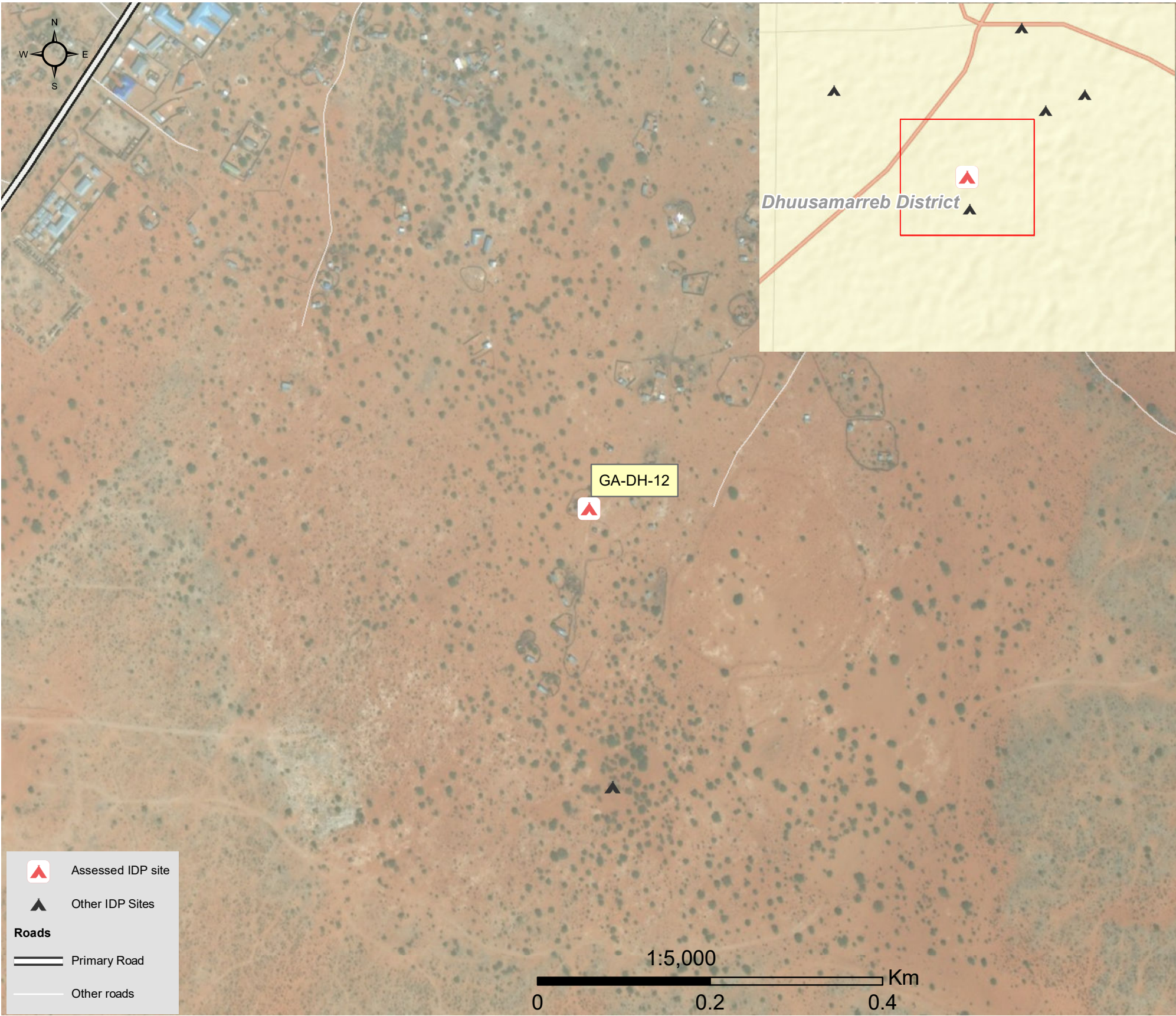
Date assessed: **Sep - 2017**

Location map



Assessed IDP sites in Dhuusamarreeb

Coordinates: Lat. 5.524, Long. 46.385



1.United Nations High Commissioner for Refugees (UNHCR): Protection & Return Monitoring Network (PRMN), September 2017

2.For each target location, the area was divided into 1km² grids. Enumerator teams then visited each grid to verify whether an IDP site was present. By visiting all grids, teams were able to determine the total number of sites in each location.

3.Where KI responses were significantly divergent, these were verified with the respective KIs with a higher reliability accorded to the response provided by the site manager or community leader.



Site Information

Settlement type	Spontaneous site
Estimated number of individuals	3,929
Estimated number of households	831
Site capacity reached	No
Responsible management agency	Community leader
Date when most site residents arrived	Jan-13
Site owner	Federal govern-



Protection

Number of vulnerable households:

Female-headed households	70
Child-headed households	0
Elderly individuals ⁴	140
Unaccompanied children	0
Individuals with a physical disability	40

Presence of shared community space	No
Presence of separate space for women/girls	No
Presence of child friendly space	No
Public lighting in the site	No
Type of landownership	None
Risk of eviction in next three months	No



WASH

Access to potable water	Yes
Number of latrines in the site:	
Latrines (mixed)	1
Latrines (male)	0
Latrines (female)	0
Access to handwashing facilities	No



Shelter and Non-Food Items (NFIs)

Most common shelter types in the site⁵:

1. Buul
2. Tent
3. CGI

Electricity available in the site	No
Access to a NFI market	No
Average walking time to the nearest NFI market	N/A
Perceived safe access to NFI market	N/A



Displacement

Estimated number of households per displacement group:

IDPs	831
Host community/ non-displaced	0
IDP households arrived in the past 3 months	83

Most common areas of origin:

First area of origin	N/A
Second area of origin	N/A
Third area of origin	N/A



Food Security

Primary source of food	Market purchase
Food distributions	Less than montly
Access to a food market	No



Health and Nutrition

Most common health issue(s) reported in the site:

1. AWD / Cholera
2. Malaria
3. Diphtheria

Access to healthcare services	Yes
Average walking time to the nearest health service	60 minutes
Women give birth in the site	Yes
Access to nutrition services	No
Average walking time to the nearest nutrition service	N/A

Access to nutrition services: No



Education

Education services available	Yes
Average walking time to the nearest school	30 minutes

Education facilities available to residents in the site⁵:

1. Primary
2. Quranic
3. N/A



Communication

Three most trusted sources of information⁵:

1. Friends, neighbours and family
2. Community leader
3. Radio

Most commonly spoken language	Somali Standard
-------------------------------	-----------------

4.More than 60 years old.

5.Key informants could select multiple responses.

Introduction

While an estimated 2.1 million people live in displacement sites in Somalia¹, existing information on exact locations and site level vulnerabilities is sparse, and existing assessments have been ad-hoc and unharmonised, resulting in low comparability and verification.

The Detailed Site Assessment (DSA) was triggered in coordination with the Camp Coordination and Camp Management (CCCM) Cluster in order to provide the humanitarian community with up-to-date information on location of internally displaced persons (IDP) sites, the conditions and capacity of the sites and the humanitarian needs of the residents.

Target locations for assessment were selected based on needs identified by the CCCM Cluster

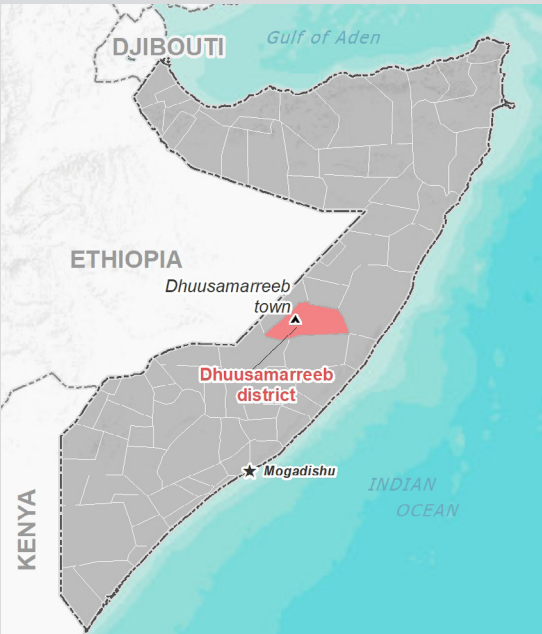
and accessibility for data collection.

A grid pattern approach² was applied during data collection to ensure that all IDP sites in the target area were identified. In each site, two key informant (KI) interviews were conducted: one with the site manager or community leader and one with a women's representative to ensure the perspectives of different groups were captured³. KI responses were aggregated to give one response per question per site.

This factsheet presents a summary of Cel_Qayof Site profile along with the needs and priorities of IDPs residing in the site. As the data is captured through KIs, findings should be considered indicative only.

Date assessed: **Sep - 2017**

Location map



Assessed IDP sites in Dhuusamarreeb

Coordinates: Lat. 5.513, Long. 46.362



1.United Nations High Commissioner for Refugees (UNHCR): Protection & Return Monitoring Network (PRMN), September 2017

2.For each target location, the area was divided into 1km² grids. Enumerator teams then visited each grid to verify whether an IDP site was present. By visiting all grids, teams were able to determine the total number of sites in each location.

3.Where KI responses were significantly divergent, these were verified with the respective KIs with a higher reliability accorded to the response provided by the site manager or community leader.



Site Information

Settlement type	Spontaneous site
Estimated number of individuals	2,100
Estimated number of households	350
Site capacity reached	Yes
Responsible management agency	Residents
Date when most site residents arrived	Jan-15
Site owner	None



Protection

Number of vulnerable households:

Female-headed households	0
Child-headed households	0
Elderly individuals ⁴	228
Unaccompanied children	0
Individuals with a physical disability	3

Presence of shared community space	No
Presence of separate space for women/girls	No
Presence of child friendly space	No
Public lighting in the site	Yes
Type of landownership	N/A
Risk of eviction in next three months	No



WASH

Access to potable water	Yes
Number of latrines in the site:	
Latrines (mixed)	2
Latrines (male)	0
Latrines (female)	0
Access to handwashing facilities	No



Shelter and Non-Food Items (NFI)

Most common shelter types in the site⁵:

1. Tent
2. CGI
3. N/A

Electricity available in the site	No
Access to a NFI market	Yes
Average walking time to the nearest NFI market	30 minutes
Perceived safe access to NFI market	Yes



Displacement

Estimated number of households per displacement group:

IDPs	321
Host community/ non-displaced	29
IDP households arrived in the past 3 months	64

Most common areas of origin:

First area of origin	Galgaduud
Second area of origin	Mudug
Third area of origin	N/A



Food Security

Primary source of food	Market purchase
Food distributions	None
Access to a food market	Yes



Health and Nutrition

Most common health issue(s) reported in the site:

1. Malaria
2. N/A
3. N/A

Access to healthcare services	No
Average walking time to the nearest health service	N/A
Women give birth in the site	Yes
Access to nutrition services	No
Average walking time to the nearest nutrition service	N/A

Access to nutrition services: No



Education

Education services available	No
Average walking time to the nearest school	N/A

Education facilities available to residents in the site⁵:

1. N/A
2. N/A
3. N/A



Communication

Three most trusted sources of information⁵:

1. Friends, neighbours and family
2. Radio
3. N/A

Most commonly spoken language	Somali Standard
-------------------------------	-----------------

4.More than 60 years old.

5.Key informants could select multiple responses.

Introduction

While an estimated 2.1 million people live in displacement sites in Somalia¹, existing information on exact locations and site level vulnerabilities is sparse, and existing assessments have been ad-hoc and unharmonised, resulting in low comparability and verification.

The Detailed Site Assessment (DSA) was triggered in coordination with the Camp Coordination and Camp Management (CCCM) Cluster in order to provide the humanitarian community with up-to-date information on location of internally displaced persons (IDP) sites, the conditions and capacity of the sites and the humanitarian needs of the residents.

Target locations for assessment were selected based on needs identified by the CCCM Cluster

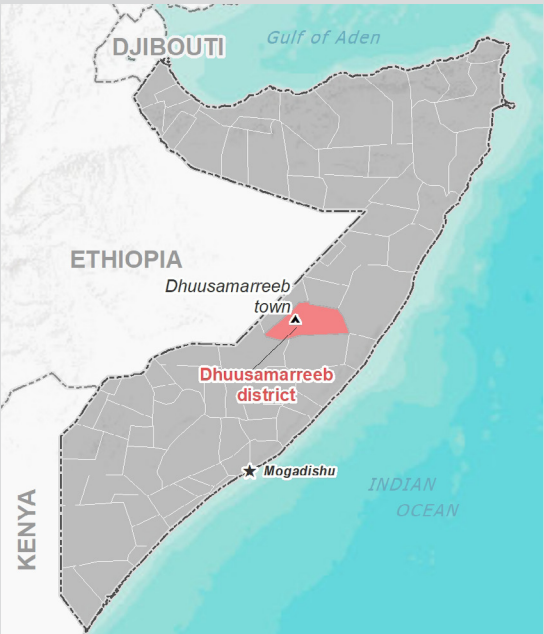
and accessibility for data collection.

A grid pattern approach² was applied during data collection to ensure that all IDP sites in the target area were identified. In each site, two key informant (KI) interviews were conducted: one with the site manager or community leader and one with a women's representative to ensure the perspectives of different groups were captured³. KI responses were aggregated to give one response per question per site.

This factsheet presents a summary of Buurta Site profile along with the needs and priorities of IDPs residing in the site. As the data is captured through KIs, findings should be considered indicative only.

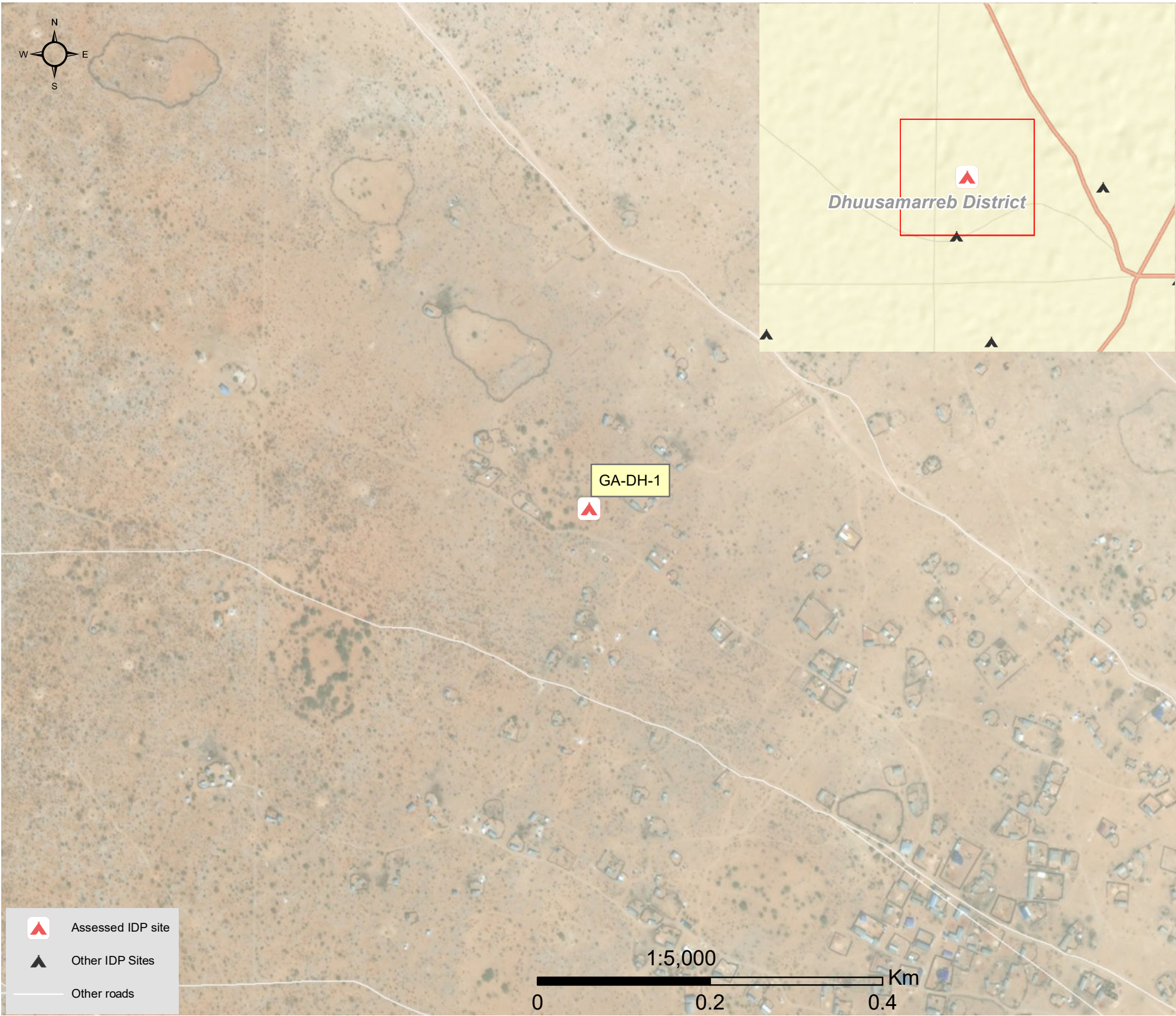
Date assessed: **Sep - 2017**

Location map



Assessed IDP sites in Dhuusamarreeb

Coordinates: Lat. 5.547, Long. 46.371



1.United Nations High Commissioner for Refugees (UNHCR): Protection & Return Monitoring Network (PRMN), September 2017

2.For each target location, the area was divided into 1km² grids. Enumerator teams then visited each grid to verify whether an IDP site was present. By visiting all grids, teams were able to determine the total number of sites in each location.

3.Where KI responses were significantly divergent, these were verified with the respective KIs with a higher reliability accorded to the response provided by the site manager or community leader.



Site Information

Settlement type	Spontaneous site
Estimated number of individuals	740
Estimated number of households	150
Site capacity reached	Yes
Responsible management agency	Residents
Date when most site residents arrived	Jan-17
Site owner	Private



Protection

Number of vulnerable households:

Female-headed households	50
Child-headed households	0
Elderly individuals ⁴	50
Unaccompanied children	20
Individuals with a physical disability	20
Presence of shared community space	No
Presence of separate space for women/girls	No
Presence of child friendly space	No
Public lighting in the site	No
Type of landownership	None
Risk of eviction in next three months	No



WASH

Access to potable water	No
Number of latrines in the site:	
Latrines (mixed)	0
Latrines (male)	0
Latrines (female)	0
Access to handwashing facilities	No



Shelter and Non-Food Items (NFI)

Most common shelter types in the site⁵:

1. Buul	
2. N/A	
3. N/A	
Electricity available in the site	No
Access to a NFI market	No
Average walking time to the nearest NFI market	N/A
Perceived safe access to NFI market	N/A



Displacement

Estimated number of households per displacement group:

IDPs	150
Host community/ non-displaced	0
IDP households arrived in the past 3 months	40

Most common areas of origin:

First area of origin	N/A
Second area of origin	N/A
Third area of origin	N/A



Food Security

Primary source of food	Borrow food/money
Food distributions	None
Access to a food market	No



Health and Nutrition

Most common health issue(s) reported in the site:

1. AWD / Cholera
2. Malaria
3. N/A

Access to healthcare services	No
Average walking time to the nearest health service	N/A
Women give birth in the site	Yes
Access to nutrition services	No
Average walking time to the nearest nutrition service	N/A

Access to nutrition services: No



Education

Education services available	No
Average walking time to the nearest school	N/A

Education facilities available to residents in the site⁵:

1. N/A
2. N/A
3. N/A



Communication

Three most trusted sources of information⁵:

1. Friends, neighbours and family
2. Radio
3. N/A

Most commonly spoken language	Somali Standard
-------------------------------	-----------------

4.More than 60 years old.

5.Key informants could select multiple responses.



Introduction

While an estimated 2.1 million people live in displacement sites in Somalia¹, existing information on exact locations and site level vulnerabilities is sparse, and existing assessments have been ad-hoc and unharmonised, resulting in low comparability and verification.

The Detailed Site Assessment (DSA) was triggered in coordination with the Camp Coordination and Camp Management (CCCM) Cluster in order to provide the humanitarian community with up-to-date information on location of internally displaced persons (IDP) sites, the conditions and capacity of the sites and the humanitarian needs of the residents.

Target locations for assessment were selected based on needs identified by the CCCM Cluster

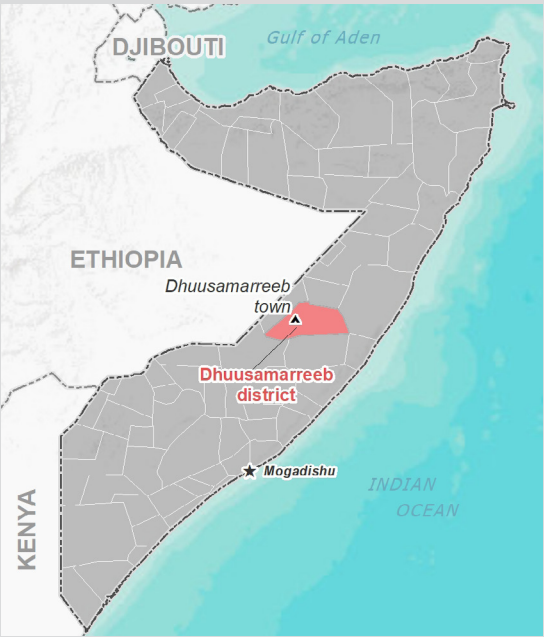
and accessibility for data collection.

A grid pattern approach² was applied during data collection to ensure that all IDP sites in the target area were identified. In each site, two key informant (KI) interviews were conducted: one with the site manager or community leader and one with a women's representative to ensure the perspectives of different groups were captured³. KI responses were aggregated to give one response per question per site.

This factsheet presents a summary of Iskuul Waabari Site profile along with the needs and priorities of IDPs residing in the site. As the data is captured through KIs, findings should be considered indicative only.

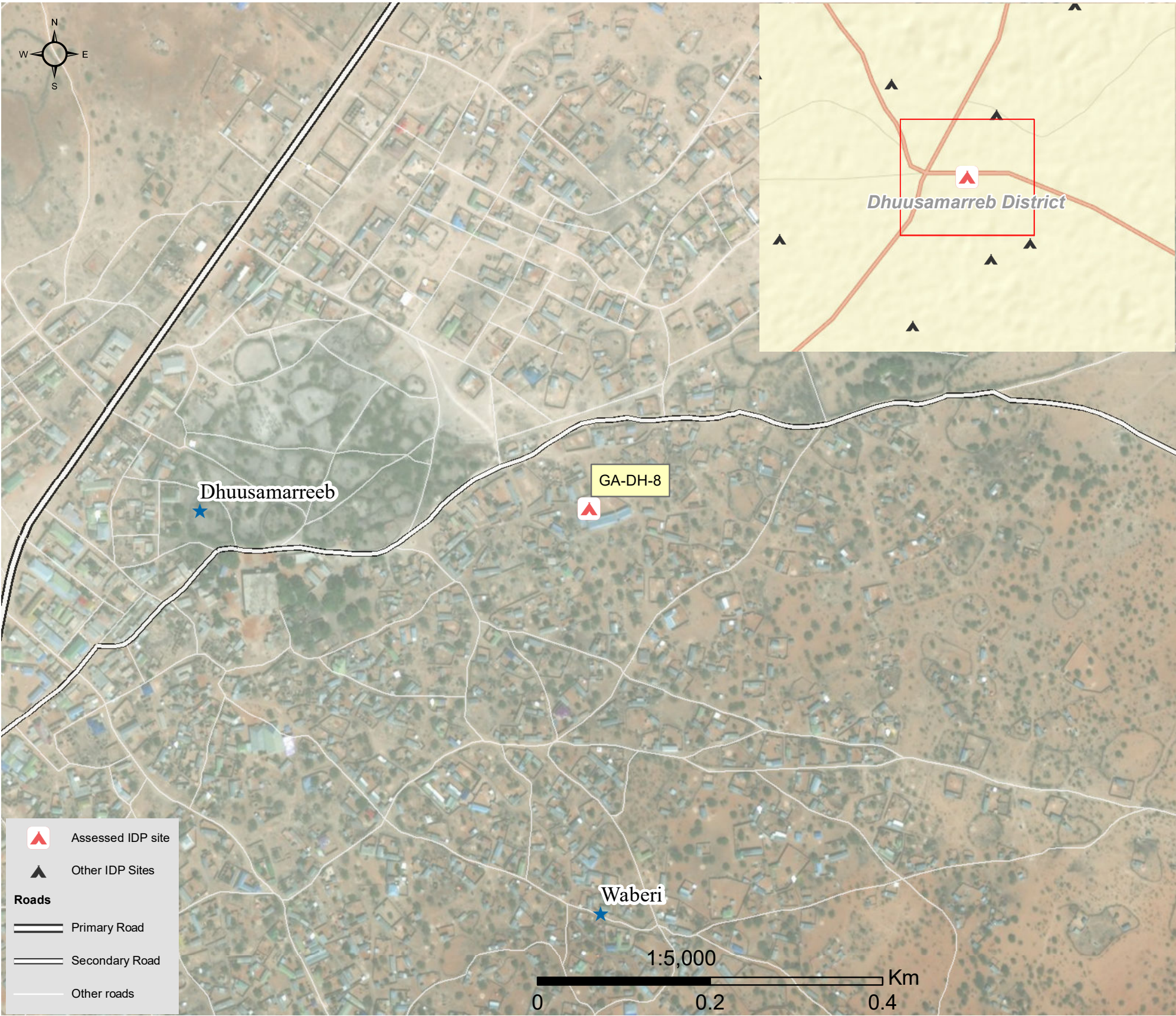
Date assessed: **Sep - 2017**

Location map



Assessed IDP sites in Dhuusamarreeb

Coordinates: Lat. 5.537, Long. 46.39



1.United Nations High Commissioner for Refugees (UNHCR): Protection & Return Monitoring Network (PRMN), September 2017

2.For each target location, the area was divided into 1km² grids. Enumerator teams then visited each grid to verify whether an IDP site was present. By visiting all grids, teams were able to determine the total number of sites in each location.

3.Where KI responses were significantly divergent, these were verified with the respective KIs with a higher reliability accorded to the response provided by the site manager or community leader.





Site Information

Settlement type	Spontaneous site
Estimated number of individuals	520
Estimated number of households	170
Site capacity reached	Yes
Responsible management agency	No management
Date when most site residents arrived	Jan-17
Site owner	Local authority



Protection

Number of vulnerable households:	
Female-headed households	2
Child-headed households	0
Elderly individuals ⁴	120
Unaccompanied children	0
Individuals with a physical disability	3
Presence of shared community space	No
Presence of separate space for women/girls	No
Presence of child friendly space	No
Public lighting in the site	No
Type of landownership	Informal
Risk of eviction in next three months	No



WASH

Access to potable water	No
Number of latrines in the site:	
Latrines (mixed)	4
Latrines (male)	0
Latrines (female)	0
Access to handwashing facilities	No



Shelter and Non-Food Items (NFI)

Most common shelter types in the site⁵:	
1. Stone	
2. N/A	
3. N/A	
Electricity available in the site	No
Access to a NFI market	No
Average walking time to the nearest NFI market	N/A
Perceived safe access to NFI market	N/A



Displacement

Estimated number of households per displacement group:	
IDPs	170
Host community/ non-displaced	0
IDP households arrived in the past 3 months	20
Most common areas of origin:	
First area of origin	N/A
Second area of origin	N/A
Third area of origin	N/A



Food Security

Primary source of food	Borrow food/money
Food distributions	None
Access to a food market	No



Health and Nutrition

Most common health issue(s) reported in the site:	
1. AWD / Cholera	
2. Malaria	
3. N/A	
Access to healthcare services	No
Average walking time to the nearest health service	N/A
Women give birth in the site	No
Access to nutrition services	No
Average walking time to the nearest nutrition service	N/A
Access to nutrition services:	No



Education

Education services available	No
Average walking time to the nearest school	N/A
Education facilities available to residents in the site⁵:	
1. N/A	
2. N/A	
3. N/A	



Communication

Three most trusted sources of information⁵:	
1. Religious leader	
2. Radio	
3. N/A	
Most commonly spoken language	Somali Standard

4.More than 60 years old.

5.Key informants could select multiple responses.



Introduction

While an estimated 2.1 million people live in displacement sites in Somalia¹, existing information on exact locations and site level vulnerabilities is sparse, and existing assessments have been ad-hoc and unharmonised, resulting in low comparability and verification.

The Detailed Site Assessment (DSA) was triggered in coordination with the Camp Coordination and Camp Management (CCCM) Cluster in order to provide the humanitarian community with up-to-date information on location of internally displaced persons (IDP) sites, the conditions and capacity of the sites and the humanitarian needs of the residents.

Target locations for assessment were selected based on needs identified by the CCCM Cluster

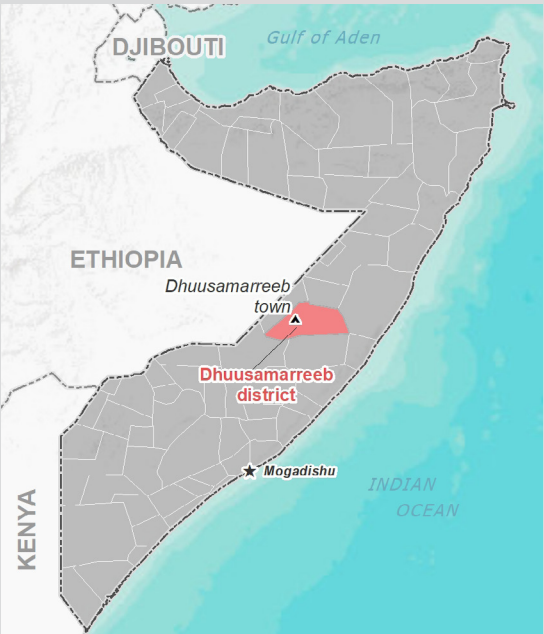
and accessibility for data collection.

A grid pattern approach² was applied during data collection to ensure that all IDP sites in the target area were identified. In each site, two key informant (KI) interviews were conducted: one with the site manager or community leader and one with a women's representative to ensure the perspectives of different groups were captured³. KI responses were aggregated to give one response per question per site.

This factsheet presents a summary of Xerta Site profile along with the needs and priorities of IDPs residing in the site. As the data is captured through KIs, findings should be considered indicative only.

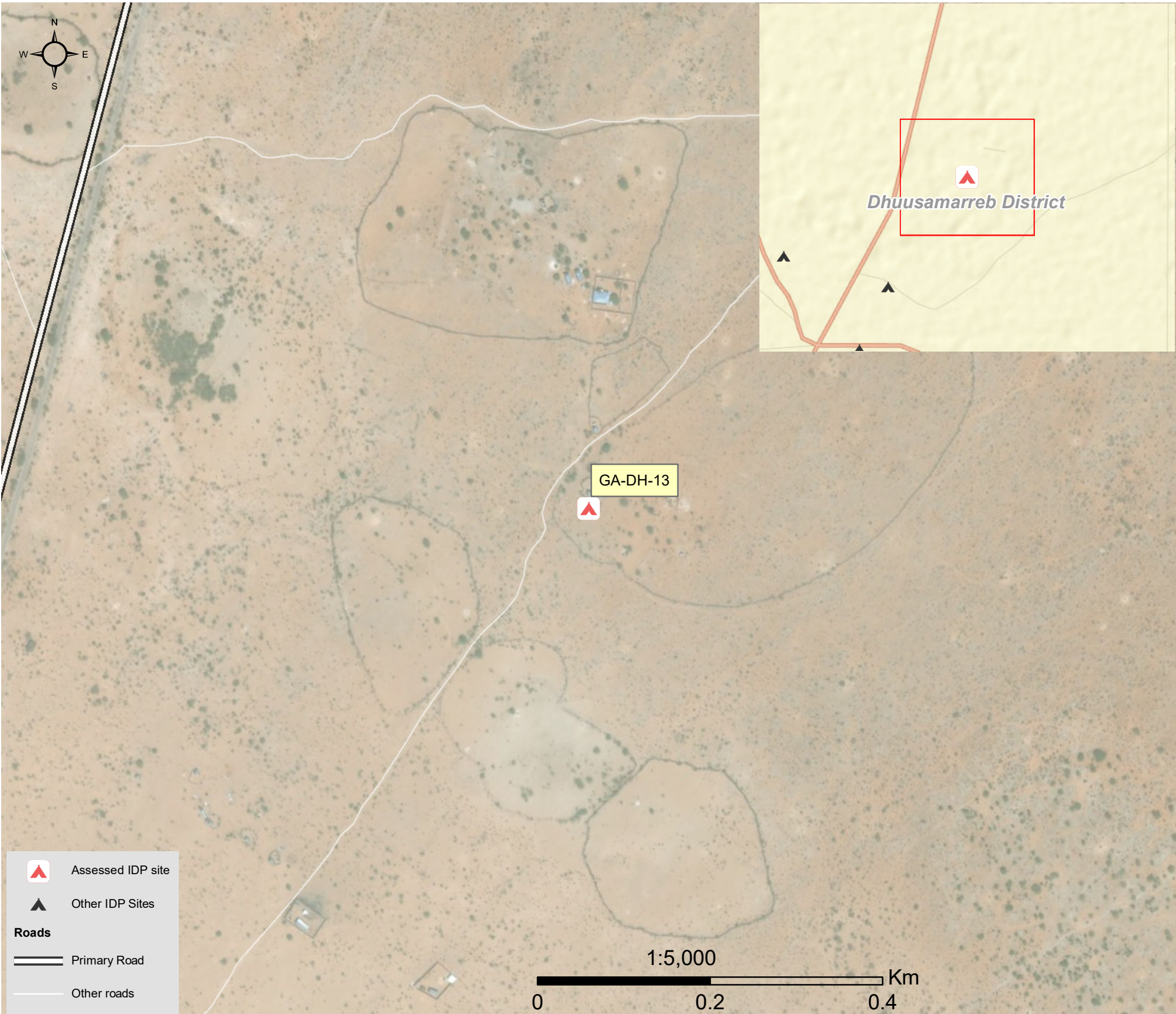
Date assessed: **Sep - 2017**

Location map



Assessed IDP sites in Dhuusamarreeb

Coordinates: Lat. 5.553, Long. 46.4



1.United Nations High Commissioner for Refugees (UNHCR): Protection & Return Monitoring Network (PRMN), September 2017

2.For each target location, the area was divided into 1km² grids. Enumerator teams then visited each grid to verify whether an IDP site was present. By visiting all grids, teams were able to determine the total number of sites in each location.

3.Where KI responses were significantly divergent, these were verified with the respective KIs with a higher reliability accorded to the response provided by the site manager or community leader.



Site Information

Settlement type	Planned site
Estimated number of individuals	258
Estimated number of households	43
Site capacity reached	Yes
Responsible management agency	Residents
Date when most site residents arrived	Jan-16
Site owner	None



Protection

Number of vulnerable households:	
Female-headed households	2
Child-headed households	0
Elderly individuals ⁴	52
Unaccompanied children	0
Individuals with a physical disability	1
Presence of shared community space	No
Presence of separate space for women/girls	No
Presence of child friendly space	No
Public lighting in the site	No
Type of landownership	N/A
Risk of eviction in next three months	No



WASH

Access to potable water	No
Number of latrines in the site:	
Latrines (mixed)	1
Latrines (male)	0
Latrines (female)	0
Access to handwashing facilities	No



Shelter and Non-Food Items (NFI)

Most common shelter types in the site⁵:	
1. Stone	
2. CGI	
3. N/A	
Electricity available in the site	No
Access to a NFI market	Yes
Average walking time to the nearest NFI market	40 minutes
Perceived safe access to NFI market	Yes



Displacement

Estimated number of households per displacement group:	
IDPs	37
Host community/ non-displaced	6
IDP households arrived in the past 3 months	11
Most common areas of origin:	
First area of origin	Galgaduud
Second area of origin	Mudug
Third area of origin	N/A



Food Security

Primary source of food	Market purchase
Food distributions	None
Access to a food market	Yes



Health and Nutrition

Most common health issue(s) reported in the site:	
1. AWD / Cholera	
2. Malaria	
3. N/A	
Access to healthcare services	No
Average walking time to the nearest health service	N/A
Women give birth in the site	Yes
Access to nutrition services	No
Average walking time to the nearest nutrition service	N/A
Access to nutrition services:	No



Education

Education services available	No
Average walking time to the nearest school	N/A
Education facilities available to residents in the site⁵:	
1. N/A	
2. N/A	
3. N/A	



Communication

Three most trusted sources of information⁵:	
1. Friends, neighbours and family	
2. Radio	
3. N/A	
Most commonly spoken language	Somali Standard

4.More than 60 years old.

5.Key informants could select multiple responses.



Introduction

While an estimated 2.1 million people live in displacement sites in Somalia¹, existing information on exact locations and site level vulnerabilities is sparse, and existing assessments have been ad-hoc and unharmonised, resulting in low comparability and verification.

The Detailed Site Assessment (DSA) was triggered in coordination with the Camp Coordination and Camp Management (CCCM) Cluster in order to provide the humanitarian community with up-to-date information on location of internally displaced persons (IDP) sites, the conditions and capacity of the sites and the humanitarian needs of the residents.

Target locations for assessment were selected based on needs identified by the CCCM Cluster

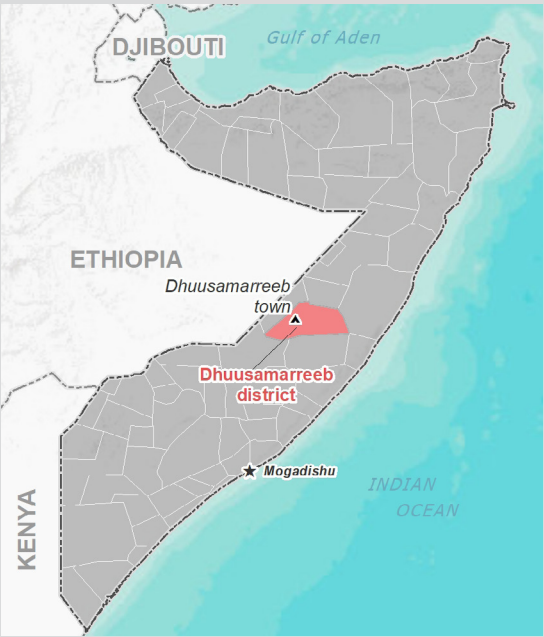
and accessibility for data collection.

A grid pattern approach² was applied during data collection to ensure that all IDP sites in the target area were identified. In each site, two key informant (KI) interviews were conducted: one with the site manager or community leader and one with a women's representative to ensure the perspectives of different groups were captured³. KI responses were aggregated to give one response per question per site.

This factsheet presents a summary of Laandheer Site profile along with the needs and priorities of IDPs residing in the site. As the data is captured through KIs, findings should be considered indicative only.

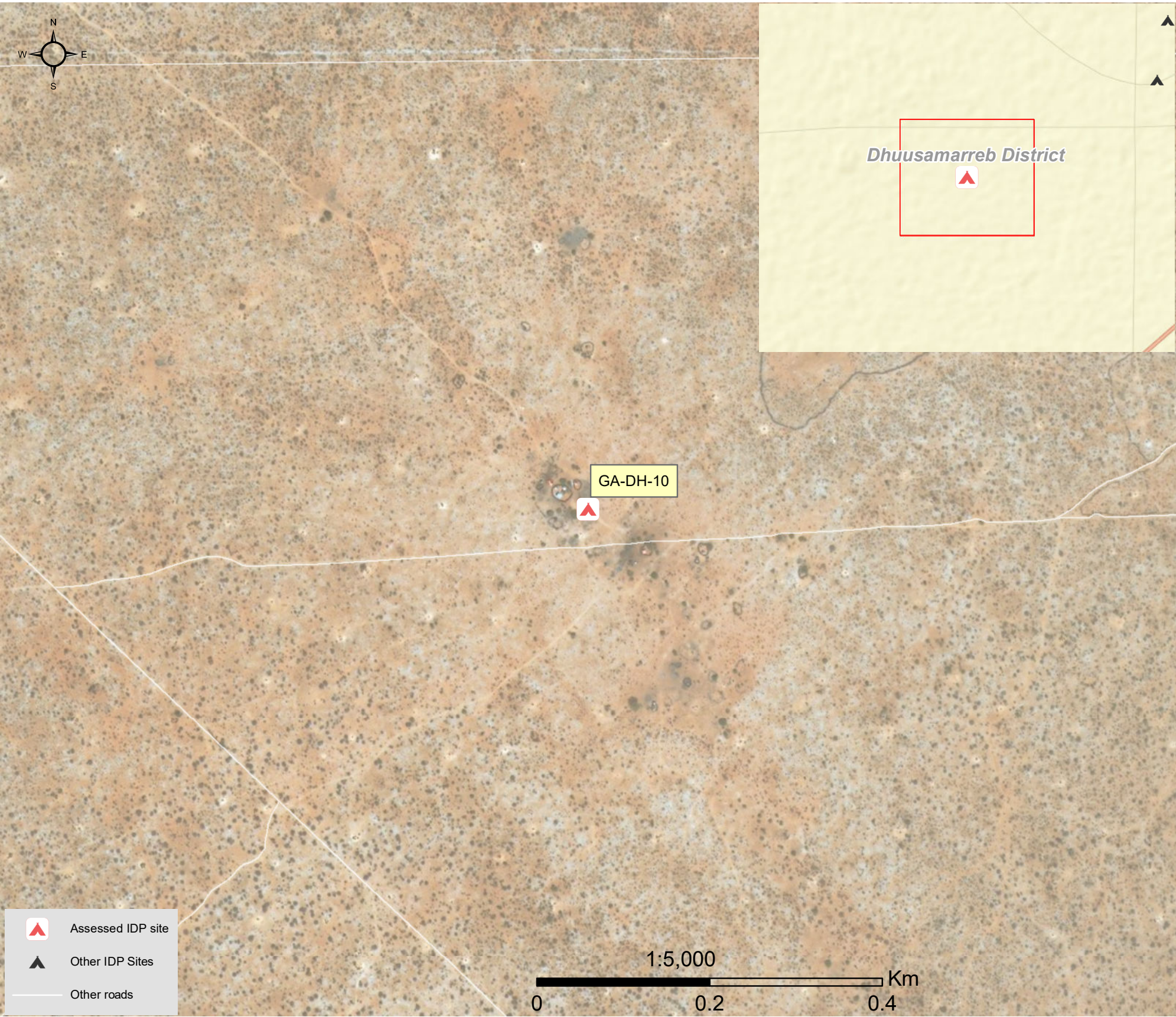
Date assessed: **Sep - 2017**

Location map



Assessed IDP sites in Dhuusamarreeb

Coordinates: Lat. 5.532, Long. 46.352



1.United Nations High Commissioner for Refugees (UNHCR): Protection & Return Monitoring Network (PRMN), September 2017

2.For each target location, the area was divided into 1km² grids. Enumerator teams then visited each grid to verify whether an IDP site was present. By visiting all grids, teams were able to determine the total number of sites in each location.

3.Where KI responses were significantly divergent, these were verified with the respective KIs with a higher reliability accorded to the response provided by the site manager or community leader.



Site Information

Settlement type	Spontaneous site
Estimated number of individuals	1,200
Estimated number of households	200
Site capacity reached	No
Responsible management agency	Residents
Date when most site residents arrived	Jan-09
Site owner	None



Protection

Number of vulnerable households:	
Female-headed households	40
Child-headed households	0
Elderly individuals ⁴	400
Unaccompanied children	0
Individuals with a physical disability	20
Presence of shared community space	No
Presence of separate space for women/girls	No
Presence of child friendly space	No
Public lighting in the site	No
Type of landownership	N/A
Risk of eviction in next three months	No



WASH

Access to potable water	No
Number of latrines in the site:	
Latrines (mixed)	0
Latrines (male)	0
Latrines (female)	0
Access to handwashing facilities	No



Shelter and Non-Food Items (NFI)

Most common shelter types in the site⁵:	
1. Buul	
2. CGI	
3. N/A	
Electricity available in the site	No
Access to a NFI market	Yes
Average walking time to the nearest NFI market	60 minutes
Perceived safe access to NFI market	Yes



Displacement

Estimated number of households per displacement group:	
IDPs	200
Host community/ non-displaced	0
IDP households arrived in the past 3 months	0
Most common areas of origin:	
First area of origin	Galgaduud
Second area of origin	N/A
Third area of origin	N/A



Food Security

Primary source of food	Market purchase
Food distributions	None
Access to a food market	Yes



Health and Nutrition

Most common health issue(s) reported in the site:	
1. Malaria	
2. N/A	
3. N/A	
Access to healthcare services	No
Average walking time to the nearest health service	N/A
Women give birth in the site	Yes
Access to nutrition services	No
Average walking time to the nearest nutrition service	N/A
Access to nutrition services:	No



Education

Education services available	No
Average walking time to the nearest school	N/A
Education facilities available to residents in the site⁵:	
1. N/A	
2. N/A	
3. N/A	



Communication

Three most trusted sources of information⁵:	
1. Radio	
2. N/A	
3. N/A	
Most commonly spoken language	Somali Standard

4.More than 60 years old.

5.Key informants could select multiple responses.



Introduction

While an estimated 2.1 million people live in displacement sites in Somalia¹, existing information on exact locations and site level vulnerabilities is sparse, and existing assessments have been ad-hoc and unharmonised, resulting in low comparability and verification.

The Detailed Site Assessment (DSA) was triggered in coordination with the Camp Coordination and Camp Management (CCCM) Cluster in order to provide the humanitarian community with up-to-date information on location of internally displaced persons (IDP) sites, the conditions and capacity of the sites and the humanitarian needs of the residents.

Target locations for assessment were selected based on needs identified by the CCCM Cluster

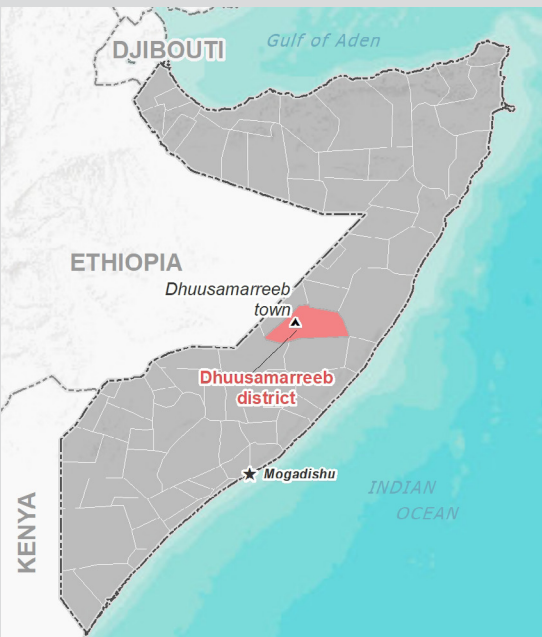
and accessibility for data collection.

A grid pattern approach² was applied during data collection to ensure that all IDP sites in the target area were identified. In each site, two key informant (KI) interviews were conducted: one with the site manager or community leader and one with a women's representative to ensure the perspectives of different groups were captured³. KI responses were aggregated to give one response per question per site.

This factsheet presents a summary of Kaam Shalxad Site profile along with the needs and priorities of IDPs residing in the site. As the data is captured through KIs, findings should be considered indicative only.

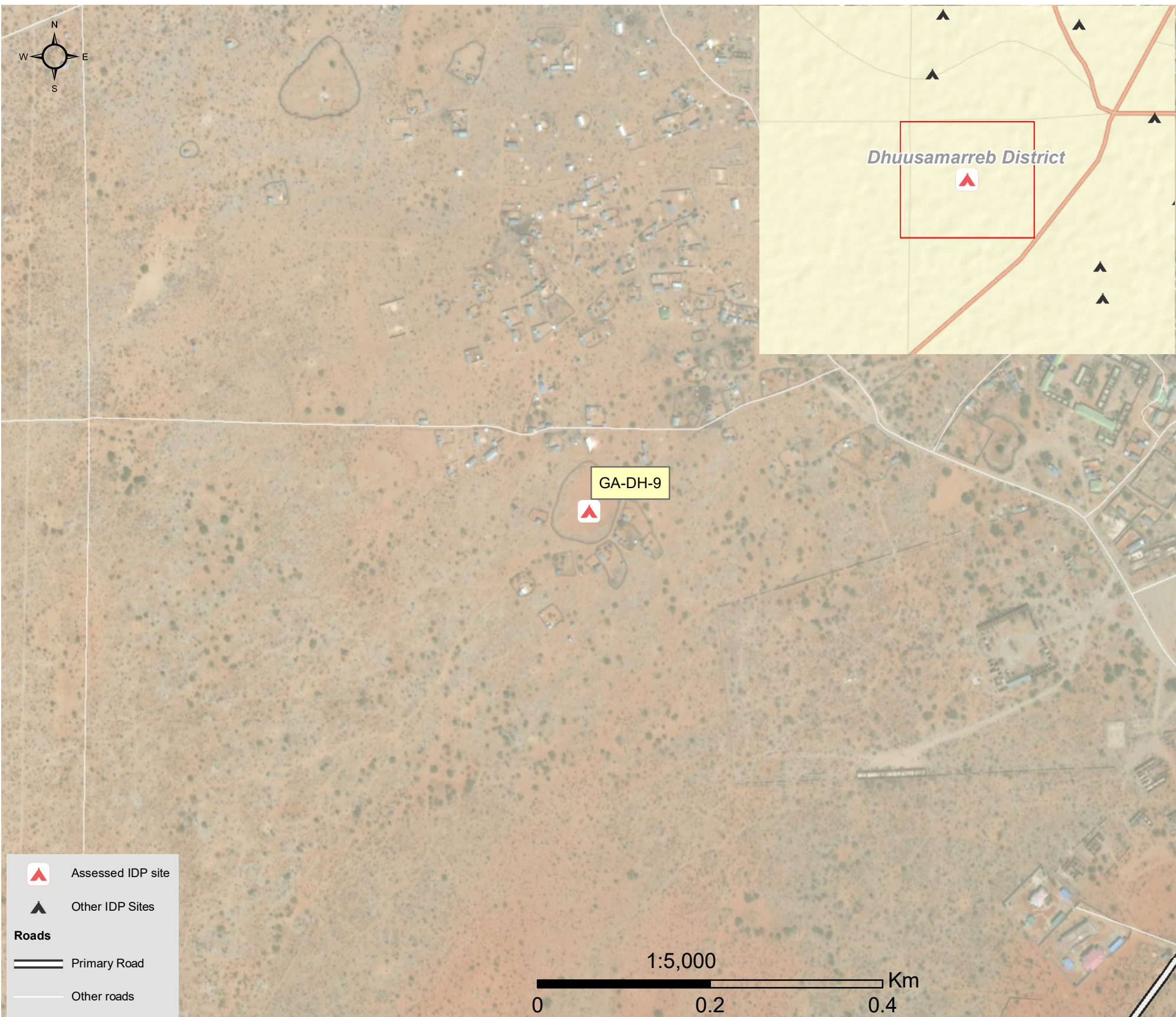
Date assessed: **Sep - 2017**

Location map



Assessed IDP sites in Dhuusamarreeb

Coordinates: Lat. 5.532, Long. 46.373



1.United Nations High Commissioner for Refugees (UNHCR): Protection & Return Monitoring Network (PRMN), September 2017

2.For each target location, the area was divided into 1km² grids. Enumerator teams then visited each grid to verify whether an IDP site was present. By visiting all grids, teams were able to determine the total number of sites in each location.

3.Where KI responses were significantly divergent, these were verified with the respective KIs with a higher reliability accorded to the response provided by the site manager or community leader.



Site Information

Settlement type	Spontaneous site
Estimated number of individuals	510
Estimated number of households	170
Site capacity reached	No
Responsible management agency	Residents
Date when most site residents arrived	Jan-17
Site owner	Not known



Protection

Number of vulnerable households:

Female-headed households	30
Child-headed households	0
Elderly individuals ⁴	180
Unaccompanied children	0
Individuals with a physical disability	10

Presence of shared community space	No
Presence of separate space for women/girls	No
Presence of child friendly space	No
Public lighting in the site	No
Type of landownership	N/A
Risk of eviction in next three months	No



WASH

Access to potable water	No
Number of latrines in the site:	
Latrines (mixed)	0
Latrines (male)	0
Latrines (female)	0
Access to handwashing facilities	No



Shelter and Non-Food Items (NFI)

Most common shelter types in the site⁵:

1. Buul
2. Tent
3. N/A

Electricity available in the site	No
Access to a NFI market	No
Average walking time to the nearest NFI market	N/A
Perceived safe access to NFI market	N/A



Displacement

Estimated number of households per displacement group:

IDPs	170
Host community/ non-displaced	0
IDP households arrived in the past 3 months	0

Most common areas of origin:

First area of origin	N/A
Second area of origin	N/A
Third area of origin	N/A



Food Security

Primary source of food	Unknown
Food distributions	None
Access to a food market	No



Health and Nutrition

Most common health issue(s) reported in the site:

1. AWD / Cholera
2. N/A
3. N/A

Access to healthcare services	No
Average walking time to the nearest health service	N/A
Women give birth in the site	Yes
Access to nutrition services	No
Average walking time to the nearest nutrition service	N/A

Access to nutrition services: No



Education

Education services available	No
Average walking time to the nearest school	N/A

Education facilities available to residents in the site⁵:

1. N/A
2. N/A
3. N/A



Communication

Three most trusted sources of information⁵:

1. Friends, neighbours and family
2. Religious leader
3. Radio

Most commonly spoken language	Somali Standard
-------------------------------	-----------------

4.More than 60 years old.

5.Key informants could select multiple responses.

