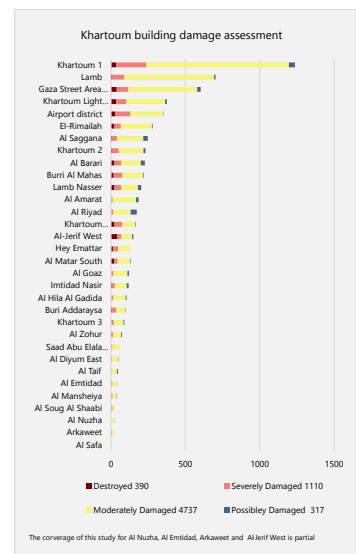
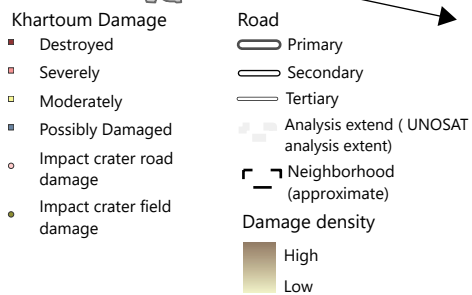


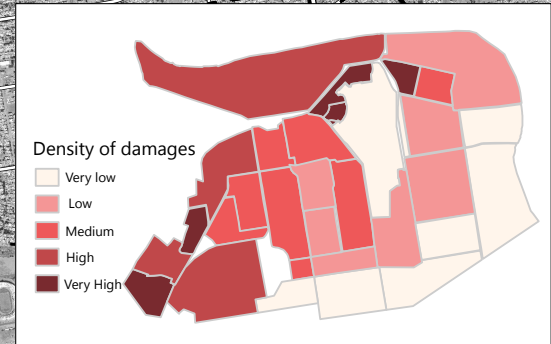
REPUBLIC OF SUDAN

Khartoum Damage Assessment of 8 January 2024

For humanitarian purpose only
Production date April 01, 2024



Data sources:
Satellite data (1): WorldView-3; Resolution: 30 cm
Date: 8 January 2024
Copyright: ©2024 Maxar/DigitalGlobe
US Department of State, Humanitarian Information Unit, NextView License
Neighborhood: Wikimapia and Mapcarta
Roads - OpenStreetMap
Damage Analysis: UNOSAT
Coordinate System: GCS WGS 1984
Contact: reach.mapping@impact-initiatives.org
Note: Data, designations and boundaries contained on this map are not warranted to be error-free and do not imply acceptance by REACH partners, associates or donors mentioned on this map.
The neighborhoods limits and names are indicative and intended for contextualization purpose



REACH
An initiative of
IMPACT Initiatives
ACTED and UNOSAT